



ADMIN PAGE

Select Filters for Dashboard from here

Year

Multiple selections



Area

Park County



Month

Jun-2022



Average Close Price

\$732,596

Most Recent Month

\$599,492**+22.2%**

Last Month

\$557,823**+31.3%**

Last Year

Median Closed Price

\$690,000

Most Recent Month

\$615,000**+12.2%**

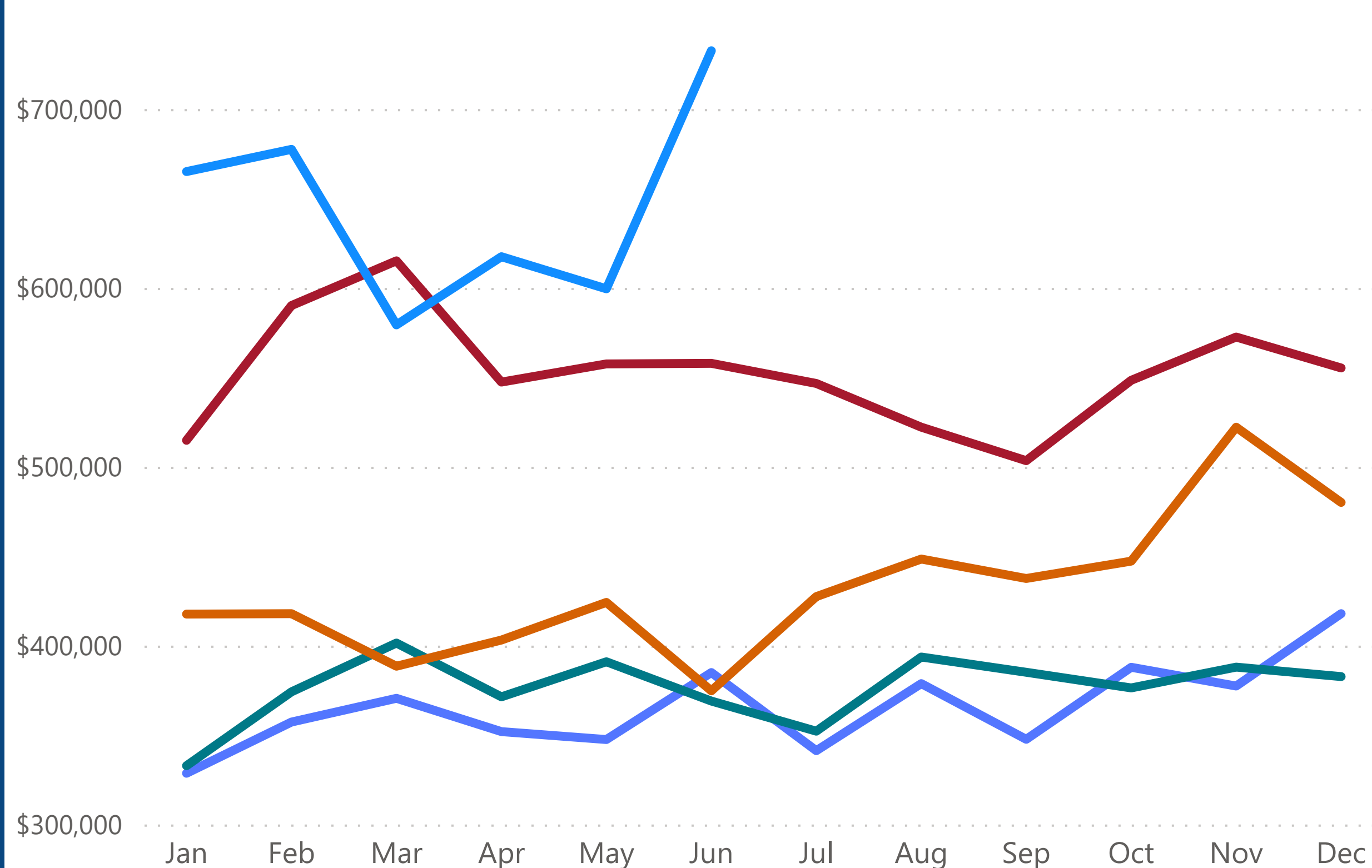
Last Month

\$555,000**+24.3%**

Last Year

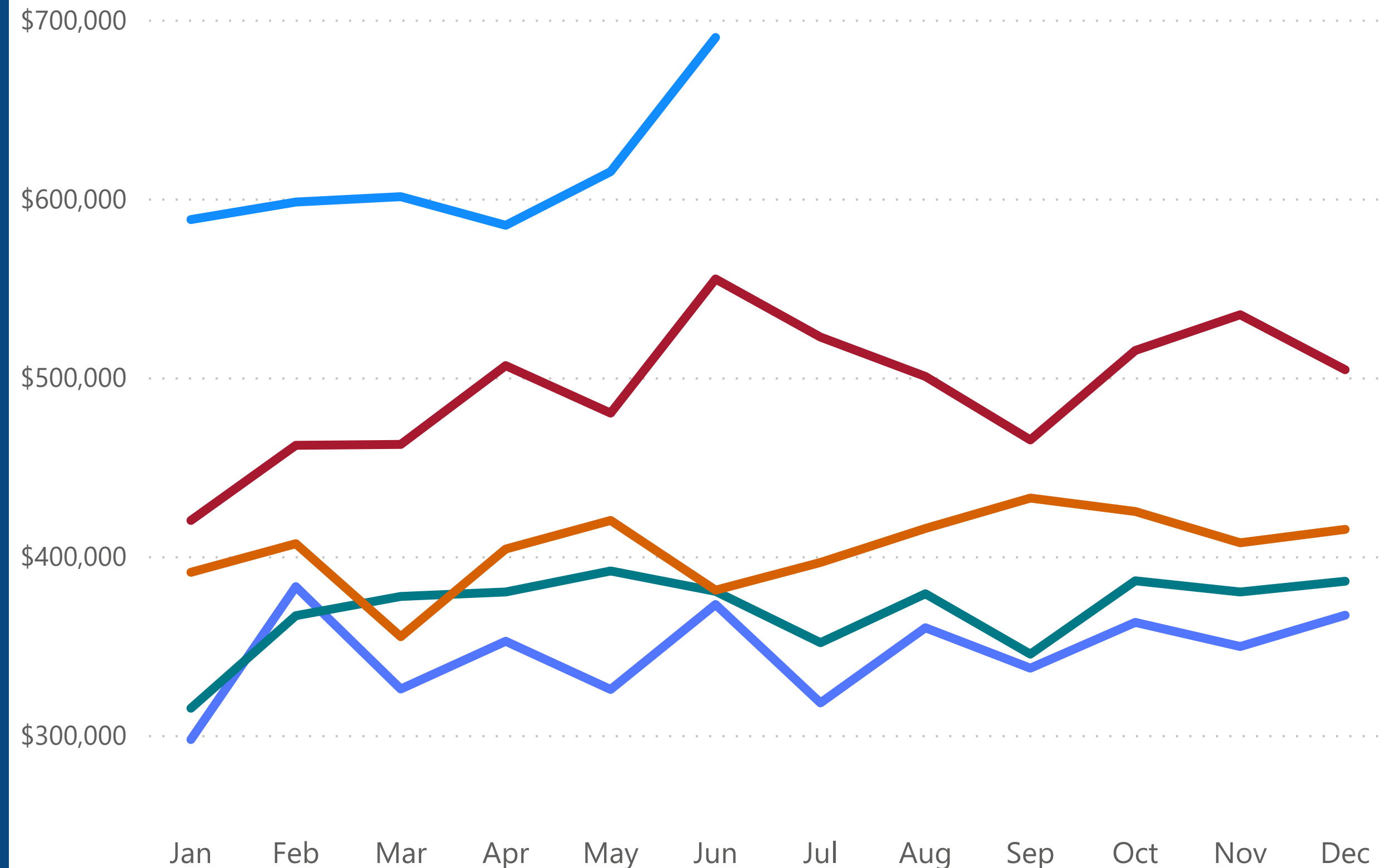
Average Closed Price | Single Family

● 2018 ● 2019 ● 2020 ● 2021 ● 2022



Median Closed Price | Single Family

● 2018 ● 2019 ● 2020 ● 2021 ● 2022



Average Closed Price

(Blank)

Most Recent Month

(Blank)

0.0%

Last Month

(Blank)

0.0%

Last Year

Median Closed Price

(Blank)

Most Recent Month

(Blank)

0.0%

Last Month

(Blank)

0.0%

Last Year

Average Closed Price | Condo/Townhome

Median Closed Price | Condo/Townhome

Single Family Average Price Per Sq Ft

\$357

Most Recent Month

\$363**-1.7%**

Last Month

\$304**+17.4%**

Last Year

Condo Average Price Per Sq Ft

(Blank)

Most Recent Month

(Blank)**0.0%**

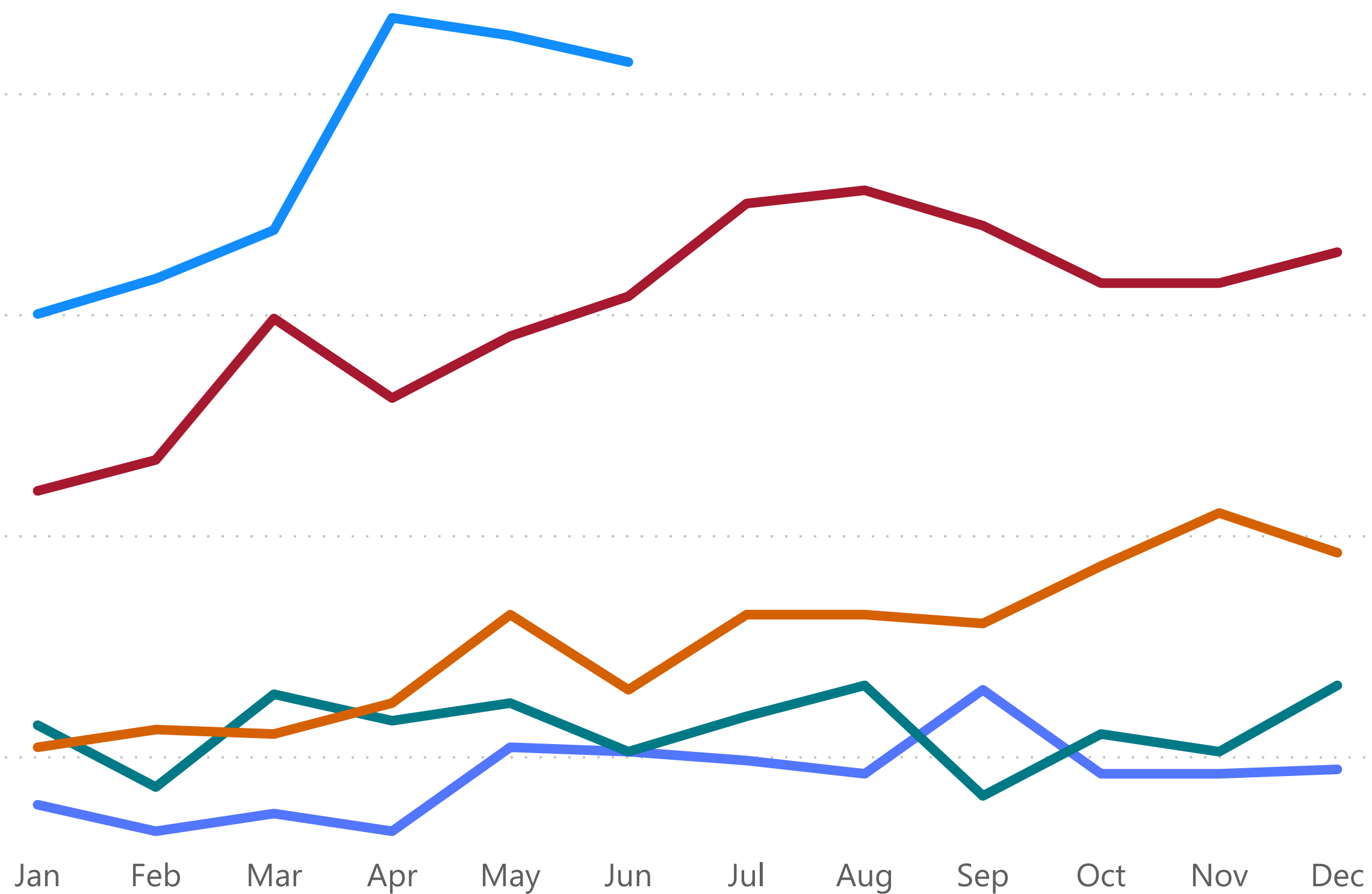
Last Month

(Blank)**0.0%**

Last Year

Average Price Per Sq Ft | Single Family

● 2018 ● 2019 ● 2020 ● 2021 ● 2022



Average Price Per Sq Ft | Condo/Townhome

Active Listings

208

Most Recent Month

153

+35.9%

Last Month

143

+45.5%

Last Year

New Listings

130

Most Recent Month

111

+17.1%

Last Month

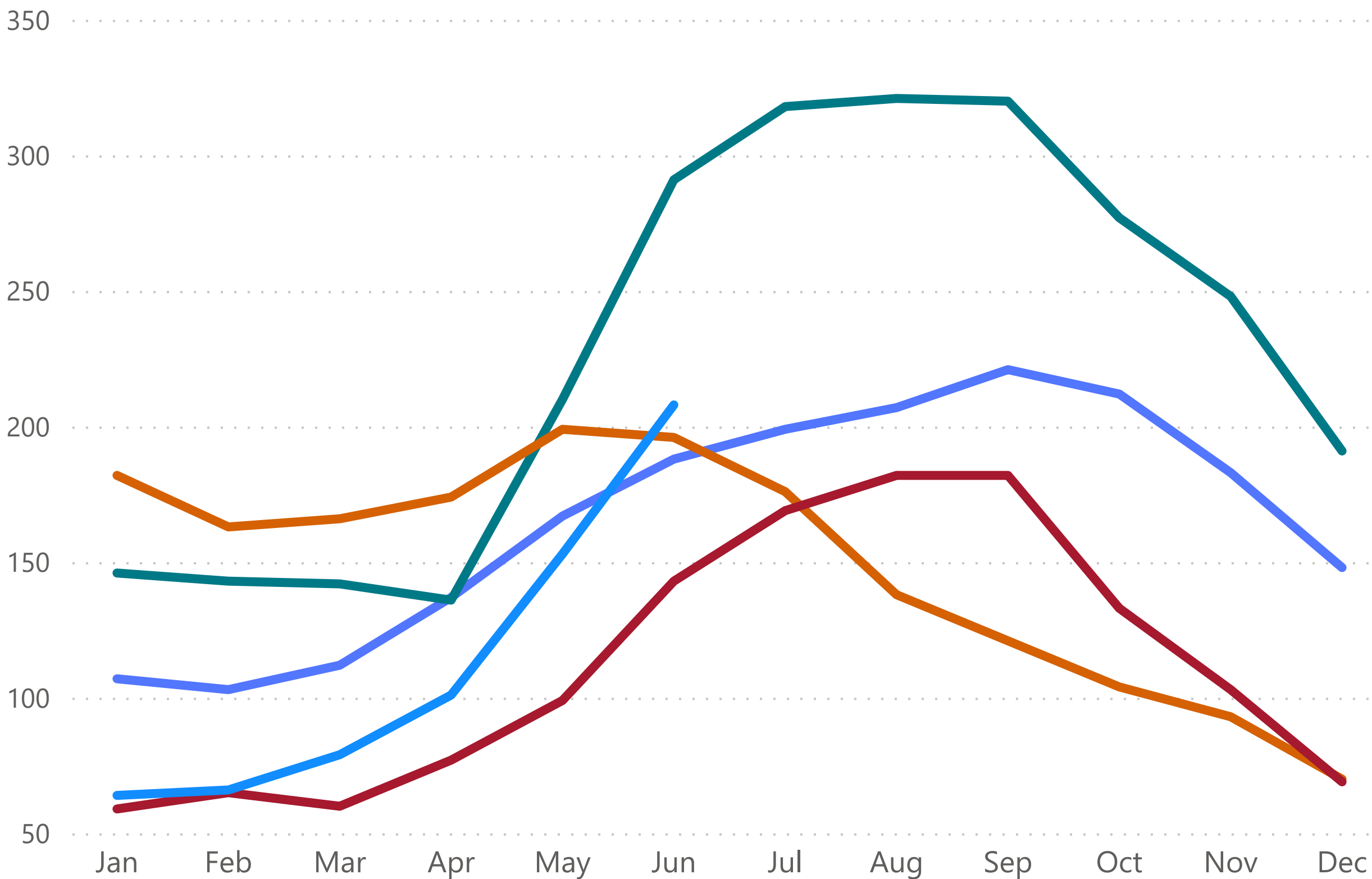
138

-5.8%

Last Year

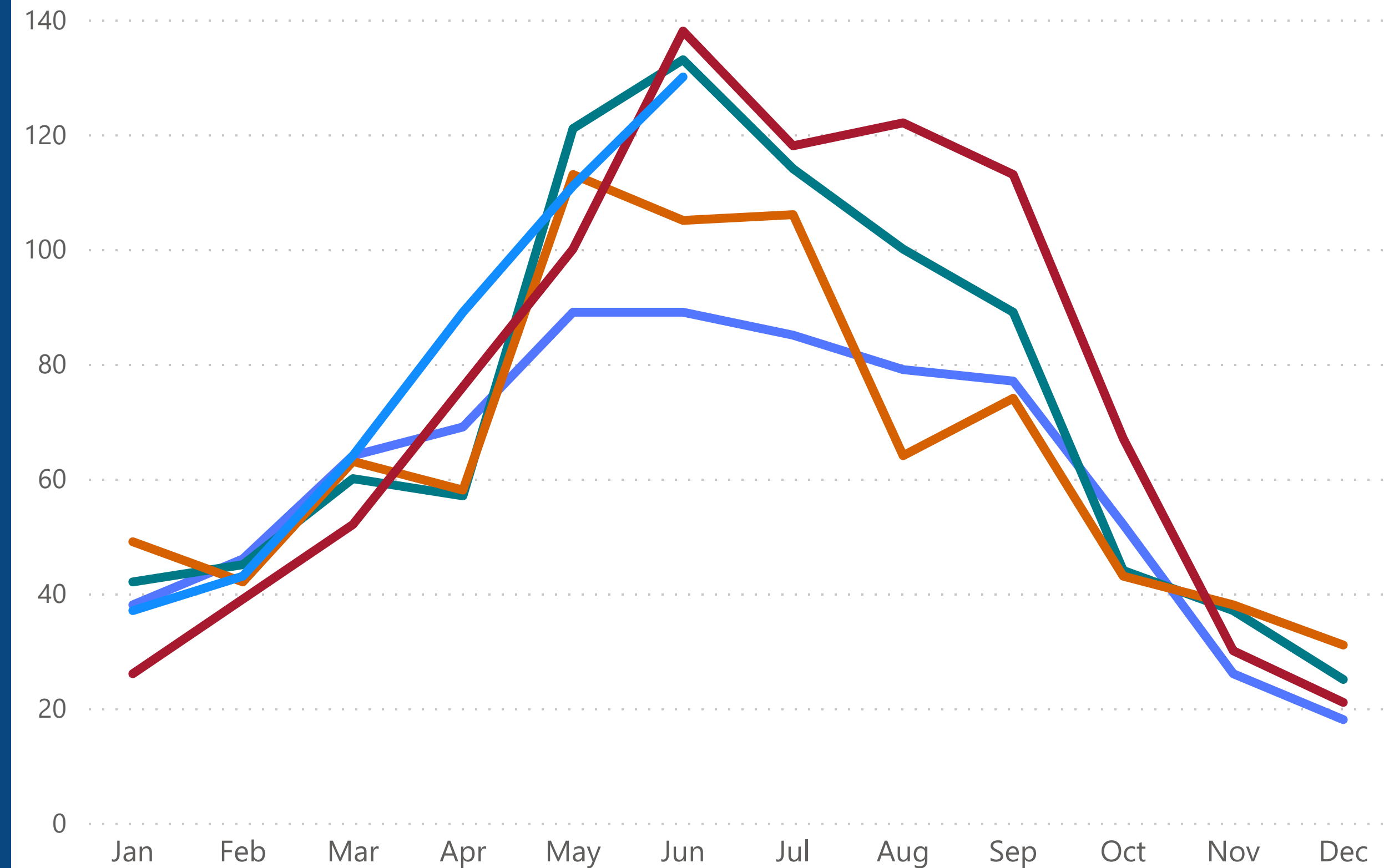
Active Listings

● 2018 ● 2019 ● 2020 ● 2021 ● 2022



New Listings

● 2018 ● 2019 ● 2020 ● 2021 ● 2022



Pending Listings

60

Most Recent Month

47

+27.7%

Last Month

86

-30.2%

Last Year

Months Supply of Listings

3.30

Most Recent Month

2.30

+43.5%

Last Month

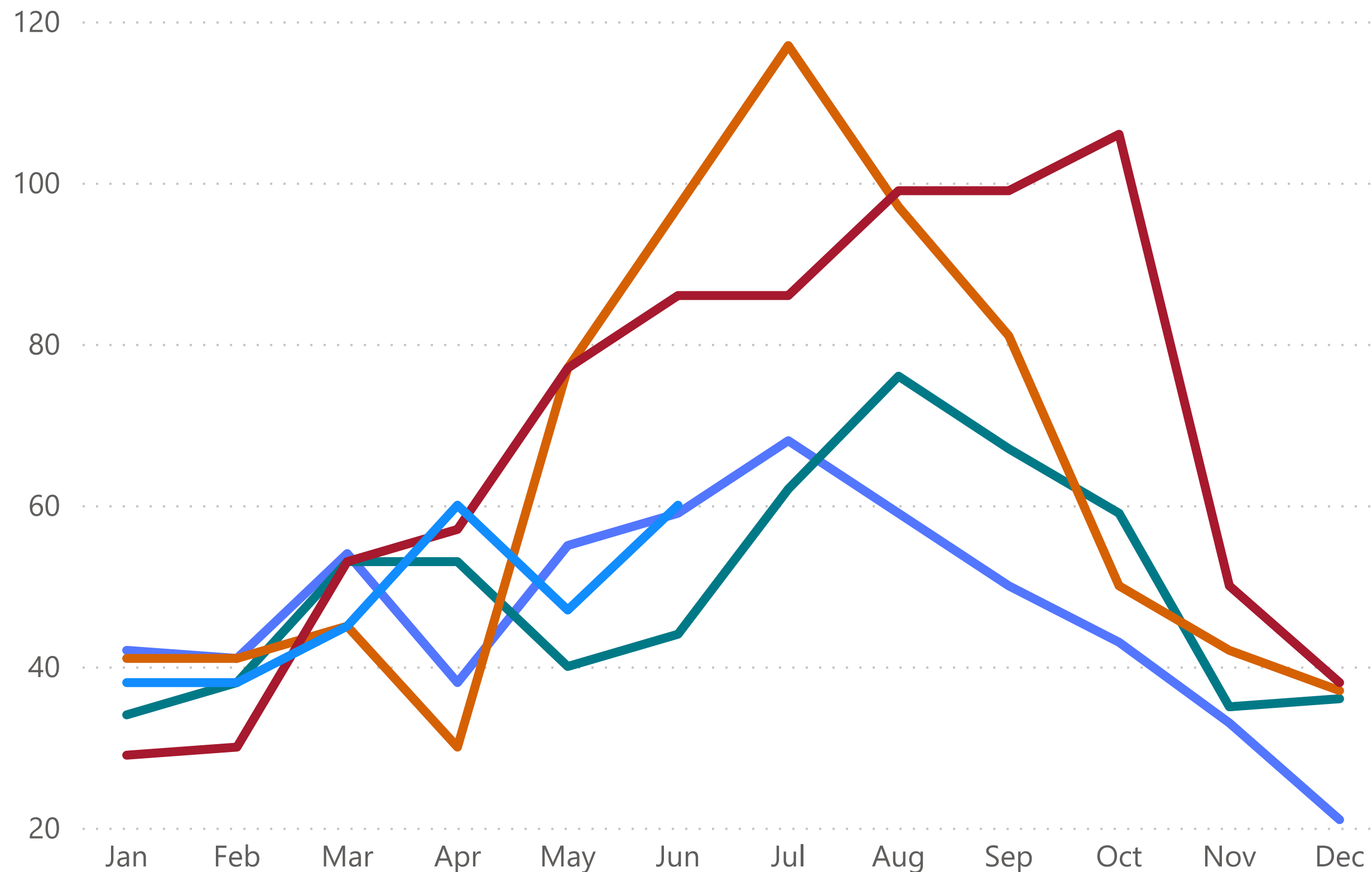
2.30

+43.5%

Last Year

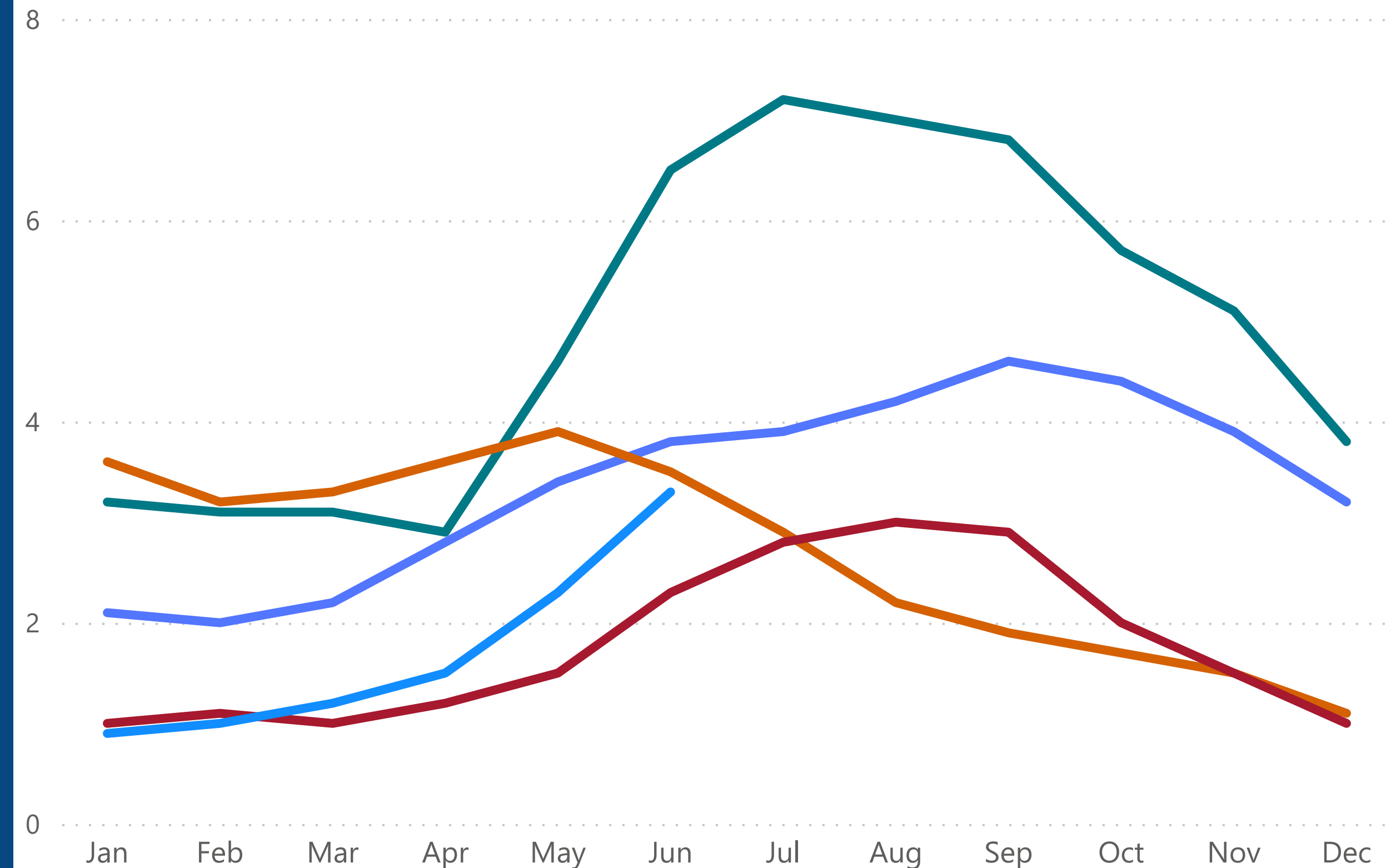
Pending Listings

● 2018 ● 2019 ● 2020 ● 2021 ● 2022



Months Supply of Listings

● 2018 ● 2019 ● 2020 ● 2021 ● 2022



Average Days in MLS

15.00

Most Recent Month

11.00

+36.4%

Last Month

25.00

-40.0%

Last Year

% Closed Price to List Price

101.5%

Most Recent Month

103.3%

-1.8%

Last Month

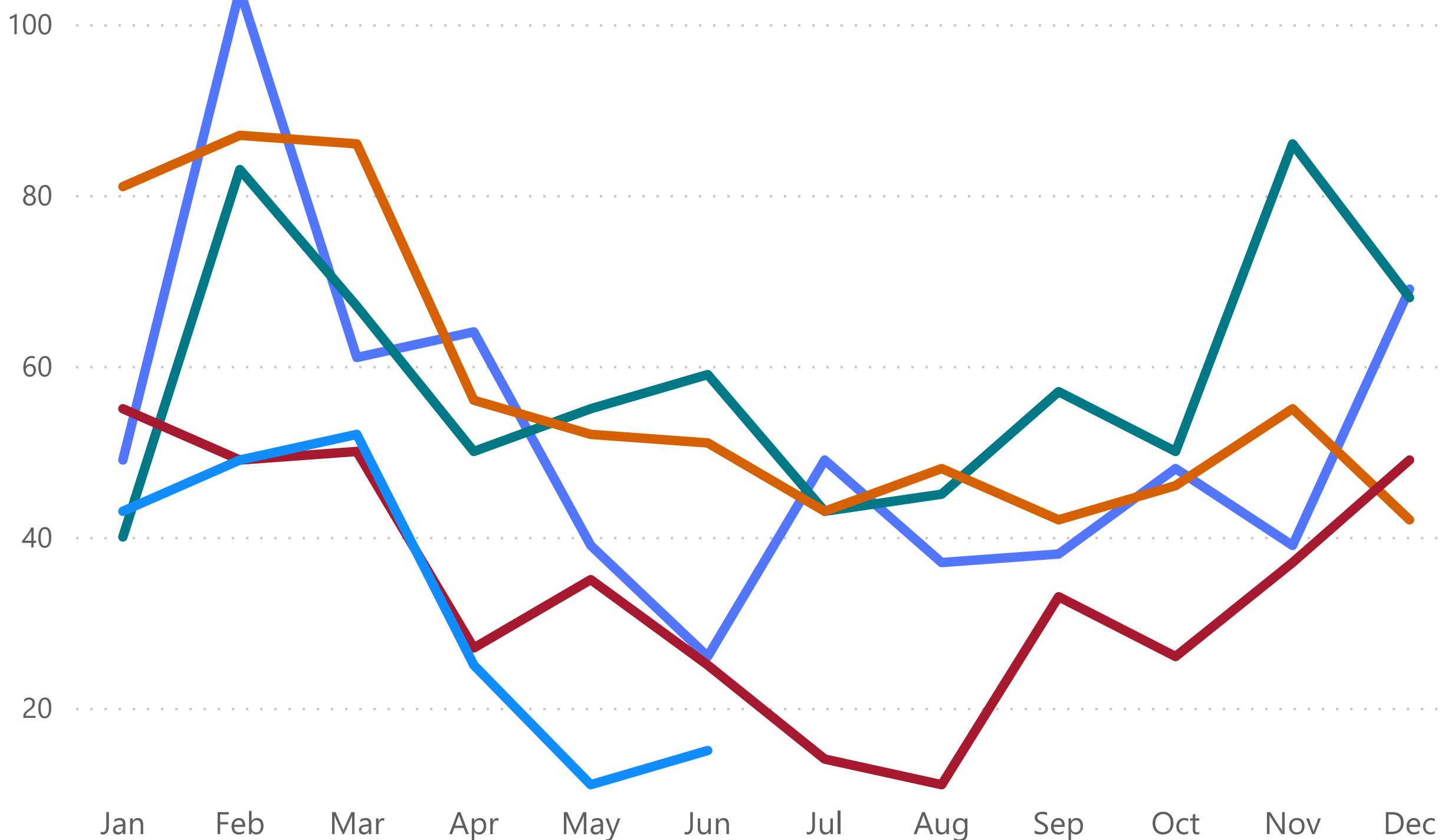
102.9%

-1.4%

Last Year

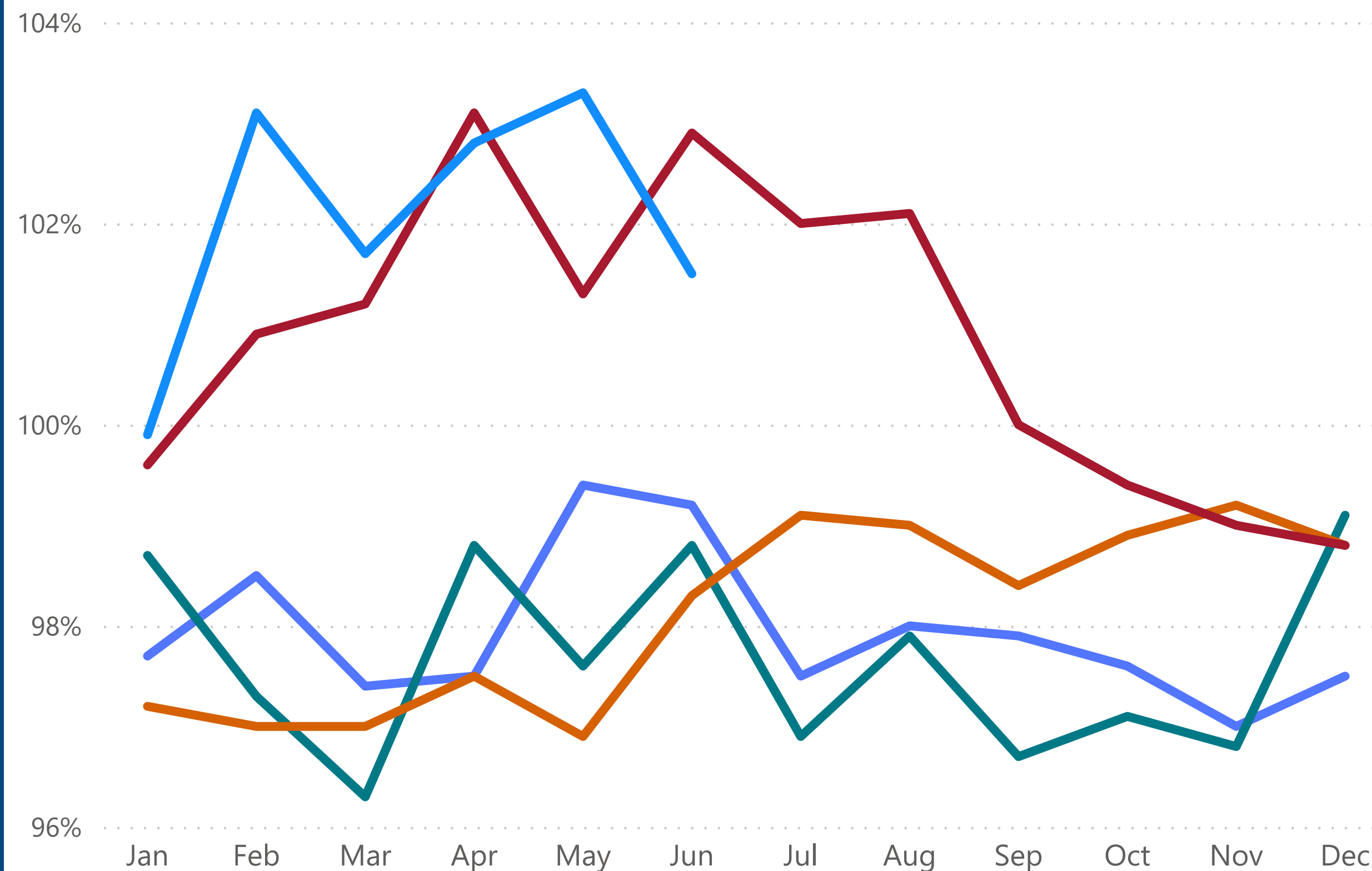
Average Days in MLS

● 2018 ● 2019 ● 2020 ● 2021 ● 2022



Percent of Closed Price to List Price

● 2018 ● 2019 ● 2020 ● 2021 ● 2022



Glossary

DEFINITIONS:

Closed Price

Calculations are based on-sale date. Prices do not account for seller concessions.

Median Price

This represents the point at which half of the homes that sold in a given month were priced higher and half were priced lower.

Average Price

The mean sales price for all closed sales in a given month.

New Listings

A count of the properties that have come onto the MLS in a given month.

Active Listings*

A snapshot of properties available for sale in as “active” status. Also known as supply or inventory.

Pending Listings*

A snapshot of the properties on which contracts have been accepted and listing status has been changed to “pending”. Also known as demand.

Days in MLS

The average number of days between when a property is listed (active) and when an offer is accepted (pending).

Months Supply

The inventory of homes for sale at the end of a given month, divided by the average monthly pending properties from the last 12 months. This - in theory - tells us how long our active inventory would last without any new inventory coming onto the market. Also known as the absorption rate.

Pct of Closed \$ to List \$

The percentage a home sold for compared to what it was listed for. Calculated by dividing a listing's sales price by its list price, then taking the average or median for all closed listings in a given month, not accounting for seller concessions.

Price Per Sq Ft

The sale price of a home divided by its finished square footage. Median or average sales price can be used to find this calculation are based on sold data. Prices do not account for seller concessions.

*This is a status-driven stat that will vary based on the exact time and date the information is pulled by the data provider.

DISCLAIMER:

Greater Metro Denver Area includes the following counties: Adams, Arapahoe, Broomfield, Denver, Douglas, Elbert, and Jefferson

Reports are based on information from REColorado®, Inc. for the period shown in title. Note: This representation is based in whole or in part on content supplied by REColorado®, Inc. REColorado®, Inc. does not guarantee nor is in any way responsible for its accuracy. Content maintained by REColorado®, Inc. may not reflect all real estate activity in the market.

Information deemed reliable but not guaranteed.