

On-Call Scheduling and EHR Integration



David Gold, MSN, RN, CEN

Director, Epic Acute Clinical Applications



Epic together.

On-Call Scheduling Vision:

One unified solution to manage, access, and
utilize on-call schedules throughout the
organization



On-Call Scheduling Vision:

Simplify schedule creation and distribution

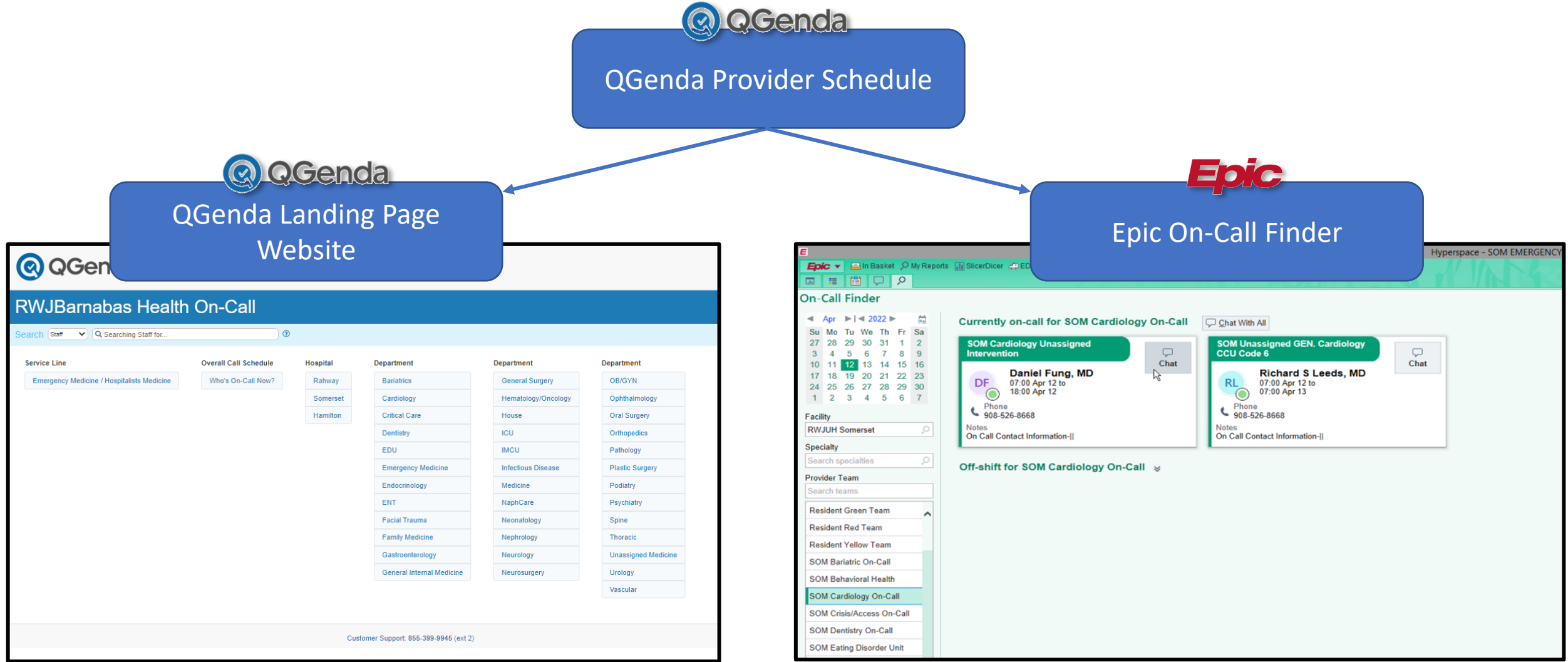
Schedule changes and updates are
published and available in real time

Improve efficiency and patient care

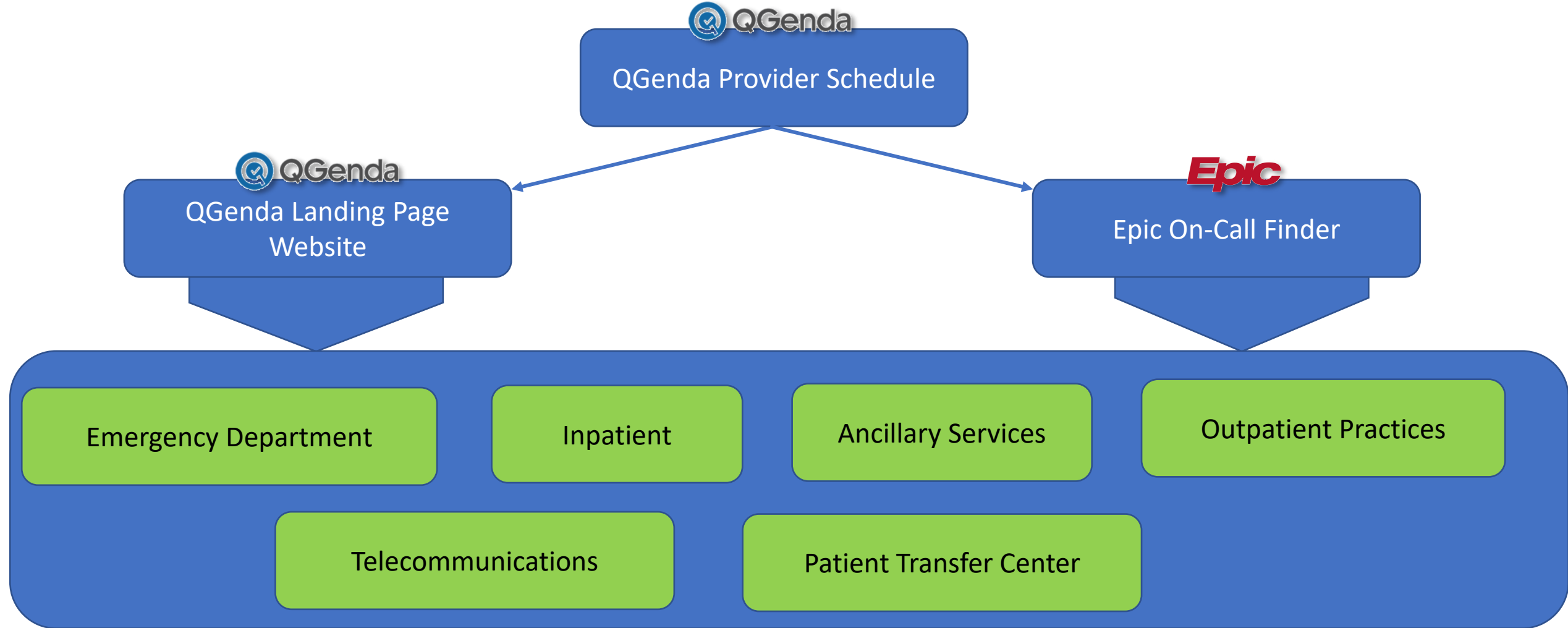
Rapidly and reliably identify on-call provider
and contact information using QGenda website
or directly within Epic



On-Call Scheduling Vision:



On-Call Scheduling Vision:



Currently Live:

EPIC WAVE 2

RWJUH Somerset

EPIC WAVE 3

RWJUH New Brunswick

RWJUH Rahway

RWJUH Hamilton

EPIC WAVE 4

Jersey City Medical Center

Monmouth Medical Center

Monmouth Medical Center Southern Campus

Community Medical Center

Barnabas Health Behavioral Health

Emergency and Hospitalist Medicine Service Lines



RWJBarnabas Health On-Call

Search

Staff



Searching Staff for...



Service Line

Emergency Medicine / Hospitalists Medicine

Overall Call Schedule

Who's On-Call Now?

Hospital

Rahway

Somerset

Hamilton

BHBH

CMC

MMC-SC

JCMC

MMC

Department

Admin On Call

Anesthesiology

Bariatrics

Cardiology

Critical Care

CT Surgery

Dentistry

EDU

Emergency Medicine

Endocrinology

ENT

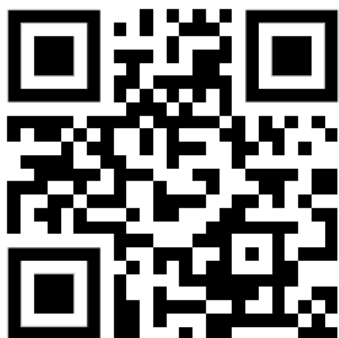
Facial Trauma

Family Medicine

Gastroenterology

Gen/SICU/Trauma

RWJBH QGenda

RWJBH QGenda
EM/HM ONLY

Display
Real Time by Task

< 5/2/2023 9:58 am Refresh Show Upcoming

[Legend](#)
FILTERS

Providers

Show Only...

Schedules

Show Only...

[Reports - Printing and Exporting](#)
[Back to On-Call Directory](#)
On-Call Provider Color Legend

Staff Types	
Attending	Physician Assistant
Advanced Practice Nurse	Nurse Practitioner
Fellow	Resident
Tech	Non-Clinical

NOTE: Default display is "Real Time by Task" to see multiple days of schedule, go to Display and change to "Grid: Tasks" and select the date range. Please continue to access on-call schedules using TheBridge as we transition to QGenda.

Click on ⓘ to see task contact instructions.

TUESDAY MAY 2 as of 9:58a								
Schedules	Hospital	Providers	Start	End	Phone Numbers	Schedule Contact Instructions	Provider Contact Instructions	On-Call Notes
MMC Endocr Phys 24hr	MMC	ON Sudha, Ganne	8:00a	8:00a	Home: 732-222-0307			
MMC Med Subspec Consult Phy	MMC							
MMC Med-COV InHouse Phy Day	MMC	ON Du, Doantrang	8:00a	5:00p	Mobile: 908-601-5529 Home: 908-601-5529			
MMC Med-Covering InHouse Phy N	MMC	Ricca, Anthony	5:00p	8:00a	Mobile: 732-245-0229 Home: 732-245-0229			
MMC Med-Inpt Admissions/Obs Phy	MMC	ON Du, Doantrang	8:00a	5:00p	Mobile: 908-601-5529 Home: 908-601-5529			
MMC Subspecialty Consults	MMC							

Display
Grid: Tasks

FILTERS

Staff

Show Only...

Tasks

Show Only...

Reports - Printing and Exporting

5/1/2023 1 Months Go

Legend

Back to On-Call Directory

On-Call Provider Color Legend

Staff Types	
Attending	Physician Assistant
Advanced Practice Nurse	Nurse Practitioner
Fellow	Resident
Tech	Non-Clinical

NOTE: Default display is "Real Time by Task" to see multiple days of schedule, go to Display and change to "Grid: Tasks" and select the date range. Please continue to access on-call schedules using TheBridge as we transition to QGenda.

Click on ⓘ to see task contact instructions.

	MON MAY 1	TUE MAY 2	WED MAY 3	THU MAY 4	FRI MAY 5
MMC Endocr Phys 24hr 8a-8a	Sudha, Ganne 8a-8a	Sudha, Ganne 8a-8a	Sudha, Ganne 8a-8a	Sudha, Ganne 8a-8a	Sudha, Ganne 8a-8a
MMC Med Subspec Consult Phy 8a-8a					
MMC Med-Covering InHouse Phy Day (MMC Med-COV InHouse Phy Day) 8a-5p	Du, Doantrang 8a-5p	Du, Doantrang 8a-5p		Fish, Peter 8a-5p	
MMC Med-Covering InHouse Phy Night (MMC Med-Covering InHouse Phy N) 5p-8a	Chatterjee, Abhijit 5p-8a	Ricca, Anthony 5p-8a	Du, Doantrang 5p-8a	Riaz, Sana 5p-8a	Ghali, Wael 5p-8a
MMC Med-Inpt Admissions/Obs Phy 8a-5p	Du, Doantrang 8a-5p	Du, Doantrang 8a-5p		Fish, Peter 8a-5p	
MMC Subspecialty Consults 8a-5p					

On-Call Finder

◀ Apr ▶ | ◀ 2022 ▶

Su	Mo	Tu	We	Th	Fr	Sa
27	28	29	30	31	1	2
3	4	5	6	7	8	9
10	11	12	13	14	15	16
17	18	19	20	21	22	23
24	25	26	27	28	29	30
1	2	3	4	5	6	7

Facility
RWJUH Somerset

Specialty
Search specialties

- Provider Team
- Search teams
- Resident Green Team
 - Resident Red Team
 - Resident Yellow Team
 - SOM Bariatric On-Call
 - SOM Behavioral Health
 - SOM Cardiology On-Call
 - SOM Crisis/Access On-Call
 - SOM Dentistry On-Call
 - SOM Eating Disorder Unit
 - SOM ENT / Otolaryngology On-Call
 - SOM Facial Trauma On-Call
 - SOM Family Medicine Blue
 - SOM Family Medicine On-Call
 - SOM Family Medicine Red
 - SOM General Cardiology On-Call
 - SOM General Surgery On-Call
 - SOM House Coverage On-Call
 - SOM ICU
 - SOM IMCU On-Call
 - SOM Internal Medicine Unassigned
 - SOM Neonatology
 - SOM Neurology On-Call
 - SOM OB-GYN On-Call
 - SOM Ophthalmology On-Call
 - SOM Ortho On-Call
 - SOM Spinal Surgery On-Call
 - SOM Surgical Critical Care Team
 - SOM Thoracic On-Call
 - SOM Unassign Medicine On-Call
 - SOM Unassigned
 - SOM Urology On-Call

Currently on-call for SOM Cardiology On-Call

Chat With All

SOM Cardiology Unassigned Intervention

DF

Daniel Fung, MD

07:00 Apr 12 to 18:00 Apr 12

Phone 908-526-8668

Notes On Call Contact Information-|

Chat

SOM Unassigned GEN. Cardiology CCU Code 6

RL

Richard S Leeds, MD

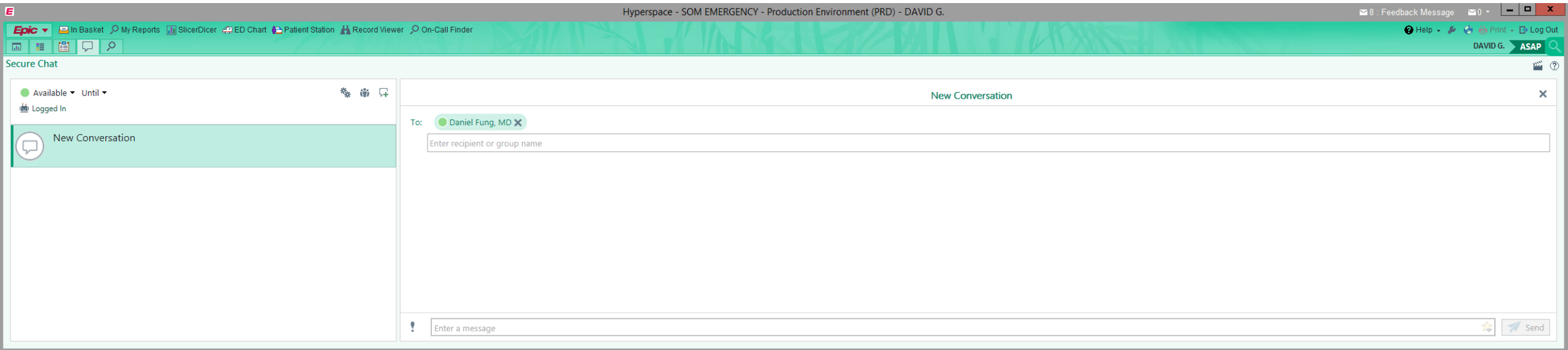
07:00 Apr 12 to 07:00 Apr 13

Phone 908-526-8668

Notes On Call Contact Information-|

Chat


Off-shift for SOM Cardiology On-Call



Epic On-Call Finder

Epic together.

Contact Info Notes:

 **RWJBarnabas Health - HAM - Critical Care** Log In

[Help Center](#) or 855-399-9945 (ext 2)

Display

Real Time by Task

FILTERS

Providers ?

Show Only...

Schedules ?

Show Only...

Reports - Printing and Exporting

< 5/2/2023 9:23 am Refresh Show Upcoming Legend

Back to On-Call Directory

On-Call Provider Color Legend

Staff Types	
Attending	Physician Assistant
Advanced Practice Nurse	Nurse Practitioner
Fellow	Resident
Tech	Non-Clinical

NOTE: Default display is "Real Time by Task" to see multiple days of schedule, go to Display and change to "Grid: Tasks" and select the date range. Please continue to access on-call schedules using TheBridge as we transition to QGenda.

Click on ① to see task contact instructions.

Schedules	Hospital	Providers	Start	End	Phone Numbers	Schedule Contact Instructions	Provider Contact Instructions
HAM Intensivists APP Day	Hamilton	ON Ramil, Merianne ①	7:00a	5:00p	Mobile: 609/558-2984 Cell: (Personal) 609/558-2984		Office: 609-584-6593 For Hamilton General Surgery on-call: 908-376-3827.
HAM Intensivists Phys	Hamilton	Fadhel, Mustafa	7:00p	7:00a	Home: 609-689-7356		
HAM Intensivists Phys Day	Hamilton	ON Go, Ronaldo	7:00a	7:00p	Home: 609-689-7356		

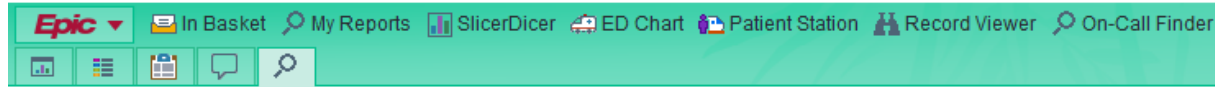
Provider Contact Instructions

Office: 609-584-6593 For Hamilton General Surgery on-call: 908-376-3827.

**Epic** together.

Contact Info Notes:

E Hyperspace - JCMC EMERGENCY - Production Environment (PRD) - DAVID G.



On-Call Finder

◀ May ▶ | ◀ 2023 ▶

Su	Mo	Tu	We	Th	Fr	Sa
30	1	2	3	4	5	6
7	8	9	10	11	12	13
14	15	16	17	18	19	20
21	22	23	24	25	26	27
28	29	30	31	1	2	3
4	5	6	7	8	9	10

Facility

RWJUH Hamilton

Specialty

Search specialties

Provider Team

Search teams

HAM GENERAL SURGERY ON-CALL

HAM GYNECOLOGY ON-CALL

HAM HAND SURGERY ON-CALL

HAM HOSPITALIST ON-CALL

HAM INTENSIVISTS/MID LEVELS ON-CALL

INTERNAL MEDICINE ON-CALL

NAPHCARE ON-CALL

NEUROLOGY ON-CALL

NEUROSURGERY ON-CALL

HAM INTENSIVISTS/MID LEVELS ON-CALL

Currently on-call

HAM Intensivists/Mid Levels On-Call

HAM Intensivists APP Day



Ramil, Merianne, NP
Primary Team Contact

07:00 May 2 to
17:00 May 2

Phone
 973-740-0607

Notes
On Call Contact Info-|Office: 609-584-6593 For Hamilton
General Surgery on-call: 908-376-3827.||



HAM Intensivists Phys Day



Go, Ronaldo, MD
07:00 May 2 to
19:00 May 2

Phone
 732-212-0060

Notes
On Call Contact Info-609-689-7356||



Off-shift

Notes

On Call Contact Info-|Office: 609-584-6593 For Hamilton
General Surgery on-call: 908-376-3827.||



Other Schedule Types:

On-Call Finder

◀ May ▶ | ◀ 2023 ▶

Su	Mo	Tu	We	Th	Fr	Sa
30	1	2	3	4	5	6
7	8	9	10	11	12	13
14	15	16	17	18	19	20
21	22	23	24	25	26	27
28	29	30	31	1	2	3
4	5	6	7	8	9	10

Facility

Jersey City Medical Center

Specialty

Search specialties

Provider Team

Search teams

JCMC ADMIN ON-CALL

JCMC ADMISSION MEDICINE ON-CALL

JCMC AFTER HOURS/WEEKEND MEDICINE ON-C...

JCMC ANESTHESIOLOGY ON-CALL

JCMC ADMIN ON-CALL

Currently on-call

+ JCMC Admin On-Call

JCMC Admin On-Call Staff 24hr



Akunyili, Ijeoma E, MD

Primary Team Contact

07:00 May 2 to
07:00 May 3

Phone

📞 201-915-2215

Notes

On Call Contact Info-201-915-2215|||



Chat

Off-shift



A red rotary telephone with a coiled cord and a blue oval shadow underneath it.

THE ART 5 as of 1:34p									
Schedules	Hospital	Providers	Start	End	Phone Numbers	Schedule Contact Instructions	Provider Contact Instructions	On-Call Notes	
SOM Bariatric Call	Schedule	Goyal, Ajay	7:00a	7:00a	Mobile: (908) 481-1270				

SOM Dentistry Call

Prakhar Mehrotra, DDS
08:00 Mar 24 to 08:00 Mar 25

Phone
862-881-4140

Notes
On Call Contact Information-908-222-7922||

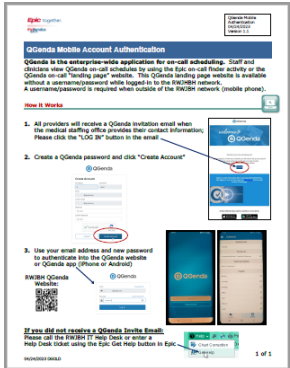
Chat

Send an Epic Secure Chat message by clicking "Chat"

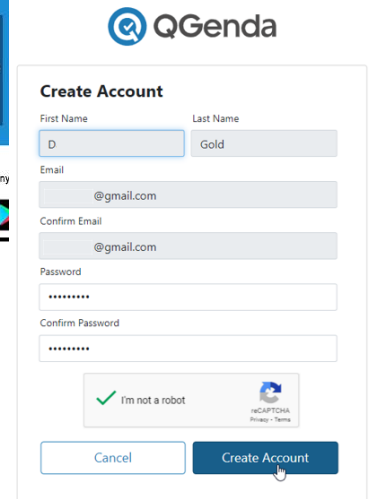
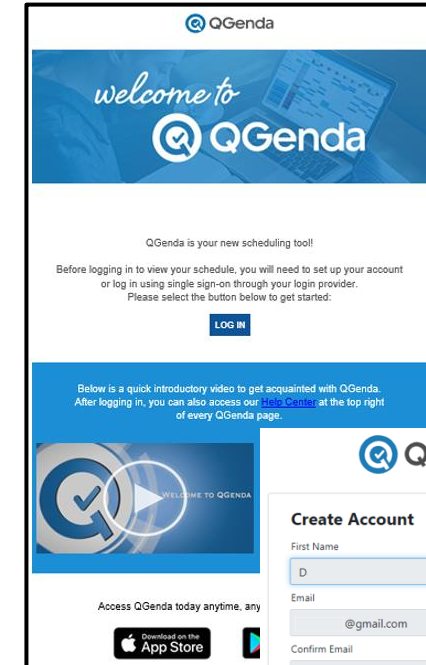
View provider contact information in the Notes section

QGenda Mobile Access

RWJBH QGenda Mobile Access Tip Sheet



Email invite:



QGenda

Create Account

First Name Last Name

D Gold

Email

@gmail.com

Confirm Email

@gmail.com

Password

Confirm Password

☒ I'm not a robot

Cancel Create Account

Project Scope:

