



UTAH DEPARTMENT *of*
ENVIRONMENTAL QUALITY

**AIR
QUALITY**

Fugitive Dust Control Plans



307-309-6. Fugitive Dust Control Plan.

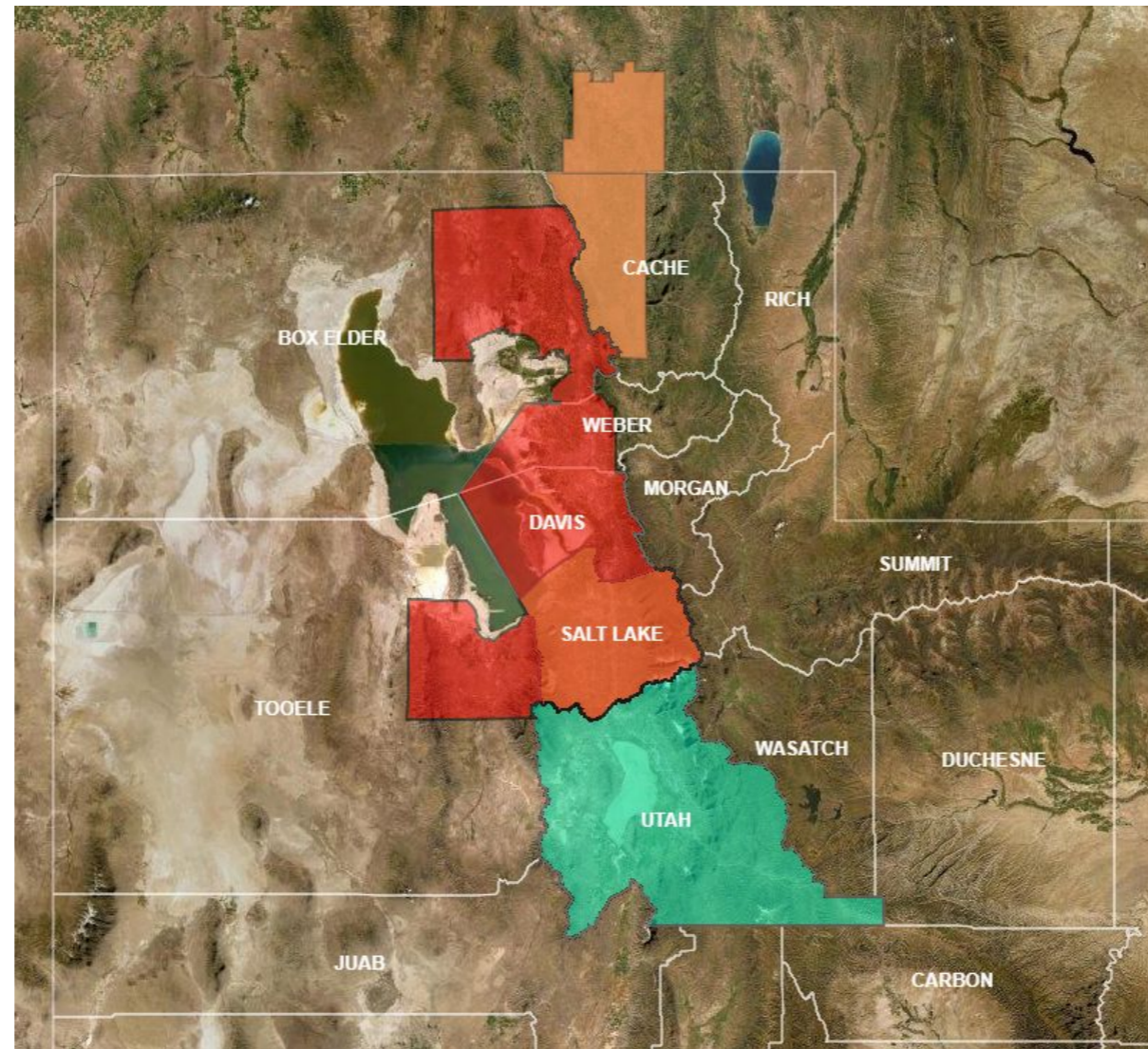
Applicability

A fugitive dust control plan is required for:

- All new or existing sources of fugitive dust that are both:
 - $\frac{1}{4}$ acre or greater
 - Located in a PM10 or PM2.5 nonattainment or maintenance plan area

307-309-6. Fugitive Dust Control Plan.

PM10 and PM2.5 nonattainment or maintenance plan areas.



[Non-attainment Area Locator Tool](#)

307-309-6. Fugitive Dust Control Plan.

The screenshot shows a web browser window with the URL `appengine.egov.com/apps/ut/dust`. The page header includes the Utah.gov logo and the text "DEQ DUST A SERVICE FROM UTAH.GOV". The main heading is "Fugitive Dust Control Plan". Below this is a form titled "Project Location" with the following text: "A Fugitive Dust Control Plan is required if your project is 1/4 acre or larger and located in Cache, Box Elder, Weber, Davis, Salt Lake, Tooele or Utah County. Other areas and conditions are optional." Below the text is a dropdown menu labeled "Select the County where your project will be located *" with the placeholder text "Please select an option".

Plans can be filled out for free on the [DAQ website](#).

R307-309-5. General Requirements for Fugitive Dust.

Opacity caused by fugitive dust shall not exceed:

- 10% at the property boundary; and
- 20% on site.



Rule 312: Aggregate Processing Operations for PM2.5 Nonattainment Areas

R307-312-5. Visible Emissions

Visible emissions from sources subject to R307-312 shall not exceed:

- 12% - Crushers
- 7% - Screens
- 7% - Conveyor transfer points
- 7% - Concrete batch plants



Track-out

Construction and aggregate mining activities are required to clean mud and dirt tracked out from the work site.



EPA Method 9 Certification

Visible Emission Observers

- Must attend an initial Opacity Training.
 - Classroom lecture
 - Field certification test
- Must renew certifications every six months.



Air Quality Compliance

How does DAQ utilize Fugitive Dust Control Plans?

A fugitive dust control plan is used for:

- Contact info when responding to complaints from the community.
- Education for sources

Note:

The opacity standards apply regardless of what is in the plan.

Common complaints

The majority of complaints received by the DAQ are from construction projects and aggregate pits



Common issues

Dust accumulating overnight or throughout the day on property

There are no state rules for dust accumulations.



Common issues

Sun angle

-Citizens seeing dust with the sun behind it



Common issues

Sun angle

-Citizens seeing dust with the sun behind it



Questions?

