

BrickWal™

From Fullerton Finish Systems, Inc.



Every Advantage Over Conventional Masonry.

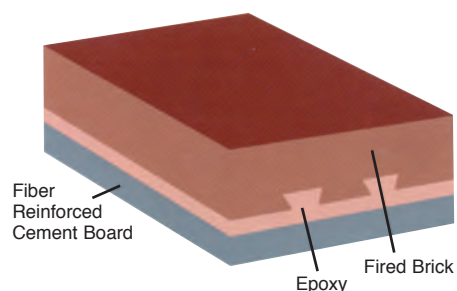
BrickWal™ gives you the look of traditional masonry without the hassle of expensive lintels, heavy foundations and structural supports. Why? Because BrickWal weighs only 8 lbs. per square foot when used as individual panels.

BrickWal™ panels increase building income and reduce maintenance expense. BrickWal™ panels are significantly thinner which allows for more usable floor space.

Also the potential maintenance problems of moisture penetrating through the wall or unsightly appearance of white stains caused by efflorescence are forever eliminated. BrickWal™ from Fullerton Finish Systems gives all of these advantages and more.

Strength Advantages.

BrickWal™ gives you a richer look than traditional masonry. The color-coordinated mortar of each panel emphasizes the beauty and distinction of kiln-fired brick. Severe weather grade brick (TBX) also prevents the occurrence of brick spalling. It has been designed, engineered and proven by the test of time.



A quality look, with durable life.

Attractive Advantages.

BrickWal™ comes in a variety of colors and textures in a sanded rake joint design and can be applied in any pattern you can imagine. Architectural distinction can be accomplished by incorporating other products from Fullerton Finish Systems onto the same panel. These accents may be cast concrete sills, bullnose copings, quoins and accent bands of crushed granite, marble or stucco. It's your choice. It's freedom to design. It's BrickWal™.

Time-Saving Advantages.

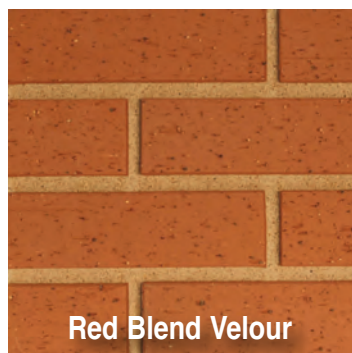
BrickWal™. The Choice is easy. So is the installation. It allows you to reduce construction time and stay on schedule. An "average" five man installation crew can install as much as 1,100 square feet of wall area in a single day, while the same number of masons can only lay approximately 450 square feet of brick. With time savings as great as these, it's time to give Fullerton Finish Systems a call.



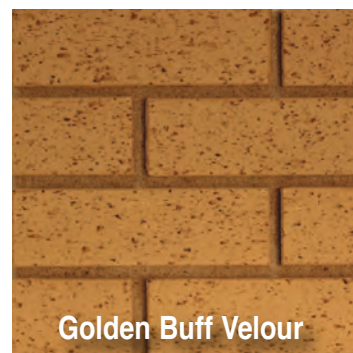
Autumn Sand



Medium Ironspot Smooth



Red Blend Velour



Golden Buff Velour



The Quality Solution for New & Remodel Exterior Finishing

PO Box 609, Sand Springs, OK 74063 • Phone 918.246.9995 • Toll Free 866.915.9995 • Fax 918.246.9976

www.fullertonfinishsystems.com

BrickWal™

From Fullerton Finish Systems, Inc.

Veneer Panel Specification

Part 1 - General

1.1 Description

A. Work described herein consists of furnishing factory fabricated veneer panels with an exterior face in a running bond pattern of kiln-fired clay brick finish applied with polymer epoxy resin on mineral fiber reinforced cement board as manufactured in Sand Springs, Oklahoma by Fullerton Finish Systems, Inc. - (918) 246-9995

B. Manufacturer shall have been continuously engaged in the manufacture of exterior wall panels for 35 or more years.

1.2 Warranty - Manufacturer to warranty from date of purchase against defective materials or workmanship for a period of five years.

Part 2 - Products

2.1 Description

A. Kiln-fired clay brick finish shall be _____ (color) and _____ (texture) per approved sample; and shall be manufactured with sanded epoxy giving deep rake joints between bricks. Epoxy color to be similar to face brick color unless otherwise specified. All material shall be obtained from one source to match in color as nearly as possible.

B. Epoxy resin finish shall conform to requirements of MIL Spec. Mil-R-9300B and MIL-R-21931A.

C. Mineral fiber reinforced cement board (M.F.B.) substrate shall meet the following minimum requirements:

Compressive Strength (lb/in²)	7000
Flexural Strength (lb/in²)	2000
Percent Moisture Movement	
50% to 90% RH	0.06%
Thermal "R" Value	0.15
Burn Character	
Flame / Smoke	0/5

D. Brick veneer shall be kiln-fired clay brick of severe weather exterior grade meeting requirements of

ASTM C-1088-94 and shall be modular sized (7-5/8" x 2-1/4" x 1/2").

E. Product samples and shop drawings, if required, shall be submitted for approval before panel fabrication.

2.2 Performance

A. Panel substrate and brick finish shall withstand the following tests without noted change in appearance or material failure:

1,000 hours in Atlas Twinarc weatherometer.

14 cycles salt fog and thermal shock.

100 cycles -50 to +150 degrees F.

B. All testing shall have been performed by an independent testing facility.

Part 3 - Execution

3.1 Erection

A. Panels shall be erected plumb and true by qualified workmen.

B. Panels shall be aligned and spaced as shown on manufacturer's shop drawings, if required.

C. Panels shall be handled and attached to building structure as per manufacturer's shop drawings, if required, installation procedure and/or architectural drawings.

D. All horizontal or vertical panel joints shall be filled with sealant over bond breaker tape.

E. Accessories

1. Sealant (Equal to Dow Corning 790 or 795) shall be applied in accordance with sealant manufacturer's recommendations.

2. Bond breaker tape (slick faced polyvinyl chloride tape) minimum of 3/4" wide and equal to #50 by All Type. Tape shall be field-applied to surface behind panel joint before panel erection.

3. Fasteners shall be low profile self-drilling stainless steel or zinc and clear chromate-plated for rust resistance.

4. All of the accessories shall be of size, shape and spacing as shown on manufacturer's shop drawings, if required, and/or listed in Manufacturer's Installation Guide.



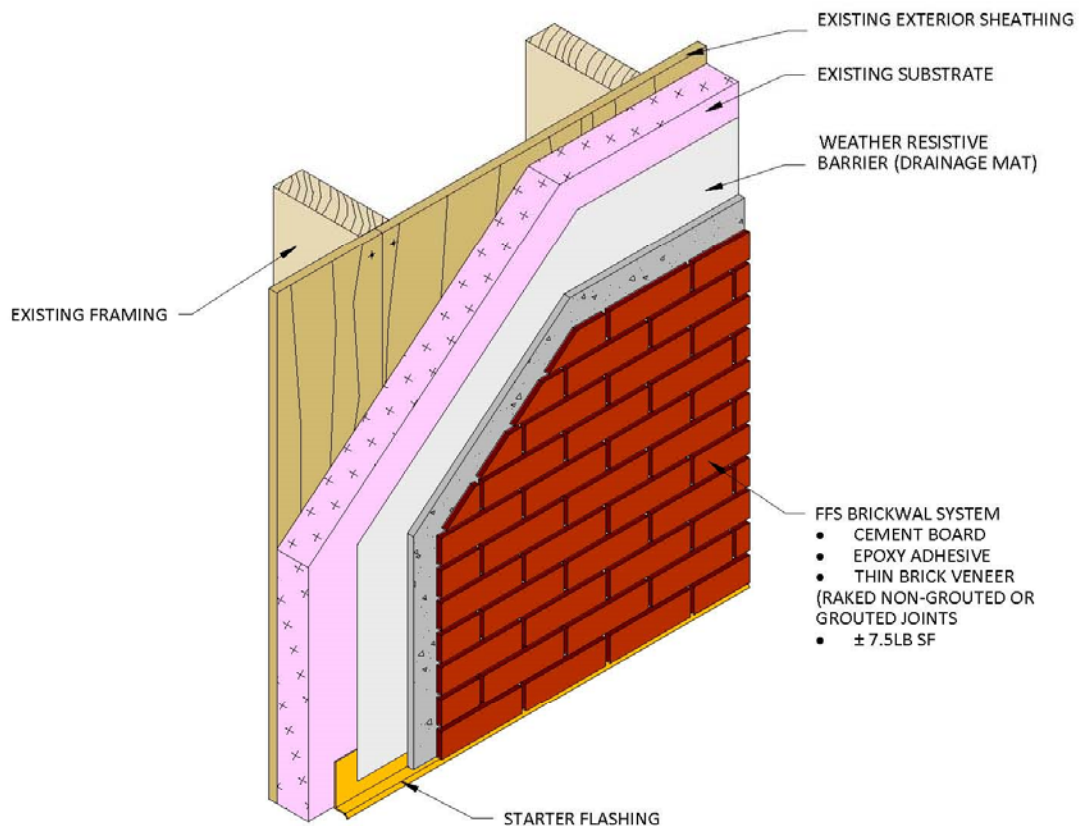
The Quality Solution for New & Remodel Exterior Finishing

PO Box 609, Sand Springs, OK 74063 • Phone 918.246.9995 • Toll Free 866.915.9995 • Fax 918.246.9976

www.fullertonfinishesystems.com

SAMPLE DETAIL

(Renovation)



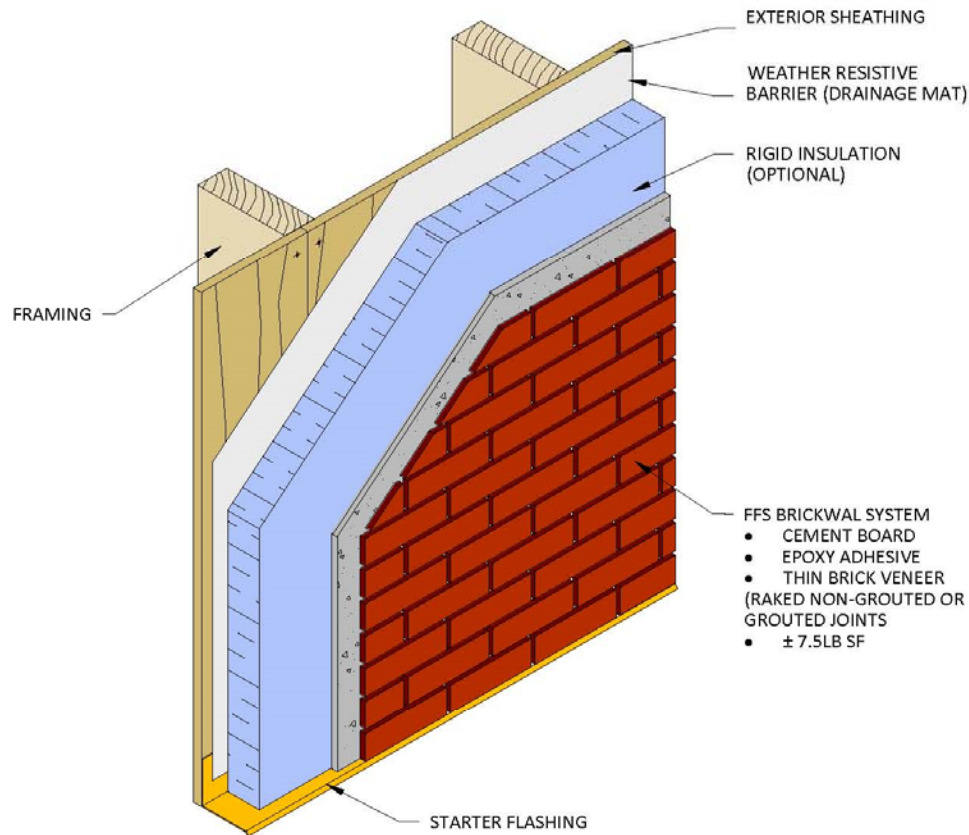
BRICK VENEER PANEL (BRICKWAL)
PROVIDED BY FFS

Brickwal System

System Layout

This drawing represents a generic sample detail for illustration purposes only.
Actual details utilized may vary due to specific project requirements.

(New Construction)



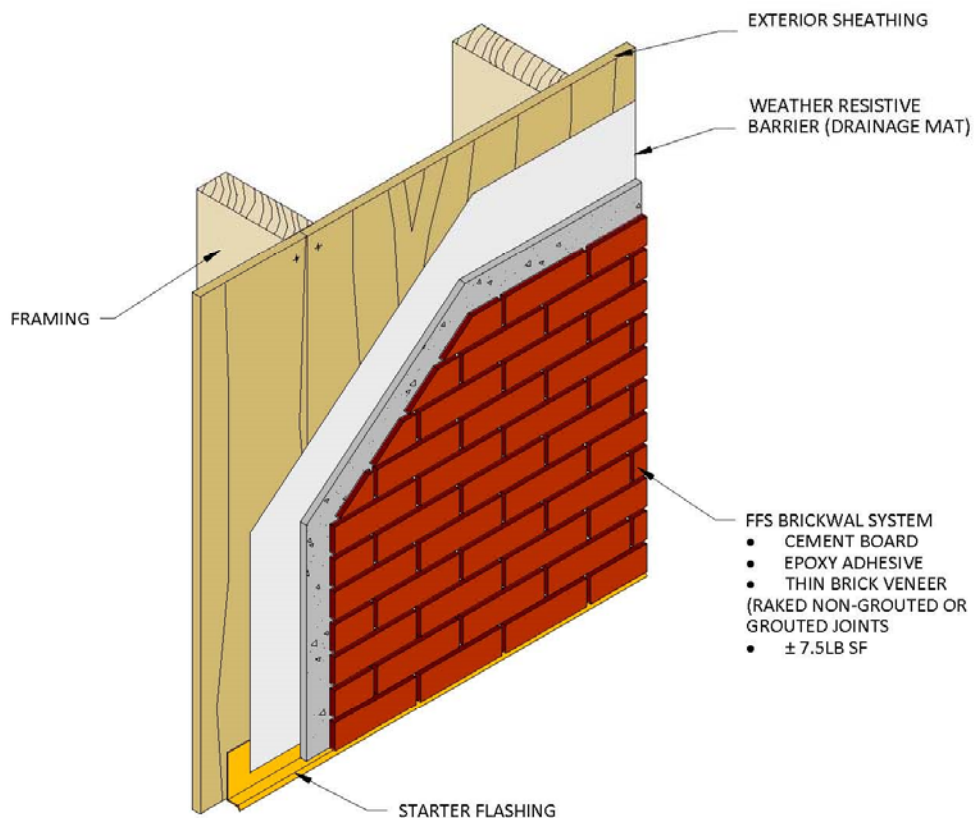
BRICK VENEER PANEL (BRICKWAL)
PROVIDED BY FFS

Brickwal System - Insulated

System Layout

This drawing represents a generic sample detail for illustration purposes only.
Actual details utilized may vary due to specific project requirements.

(New Construction)

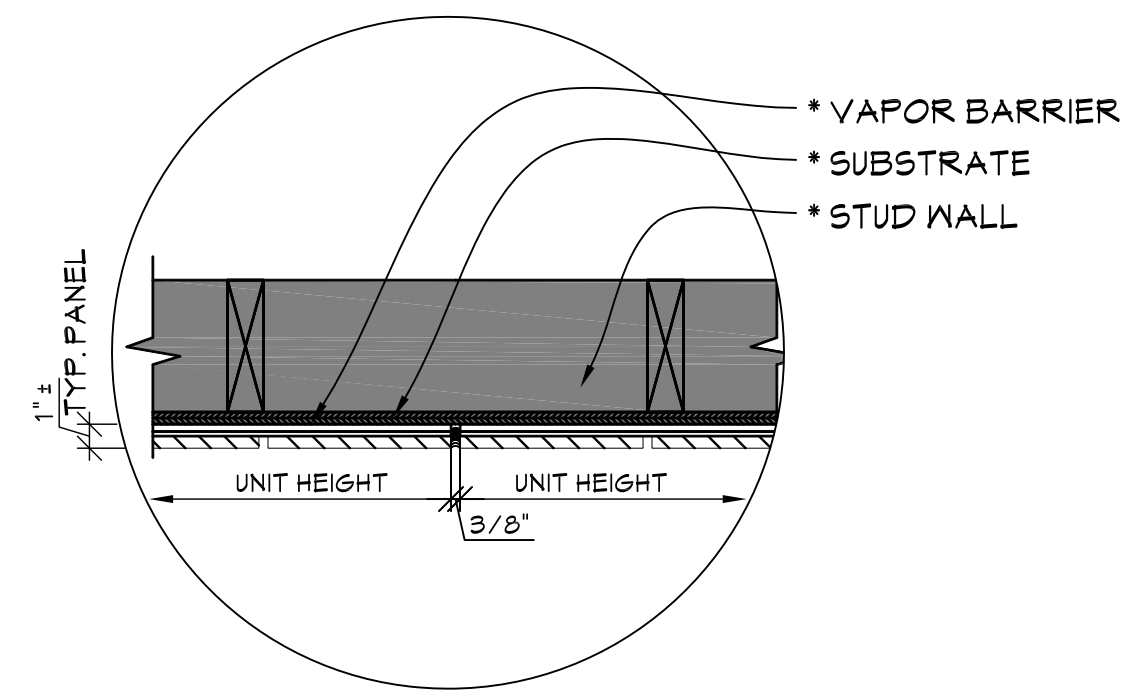


BRICK VENEER PANEL (BRICKWAL)
PROVIDED BY FFS

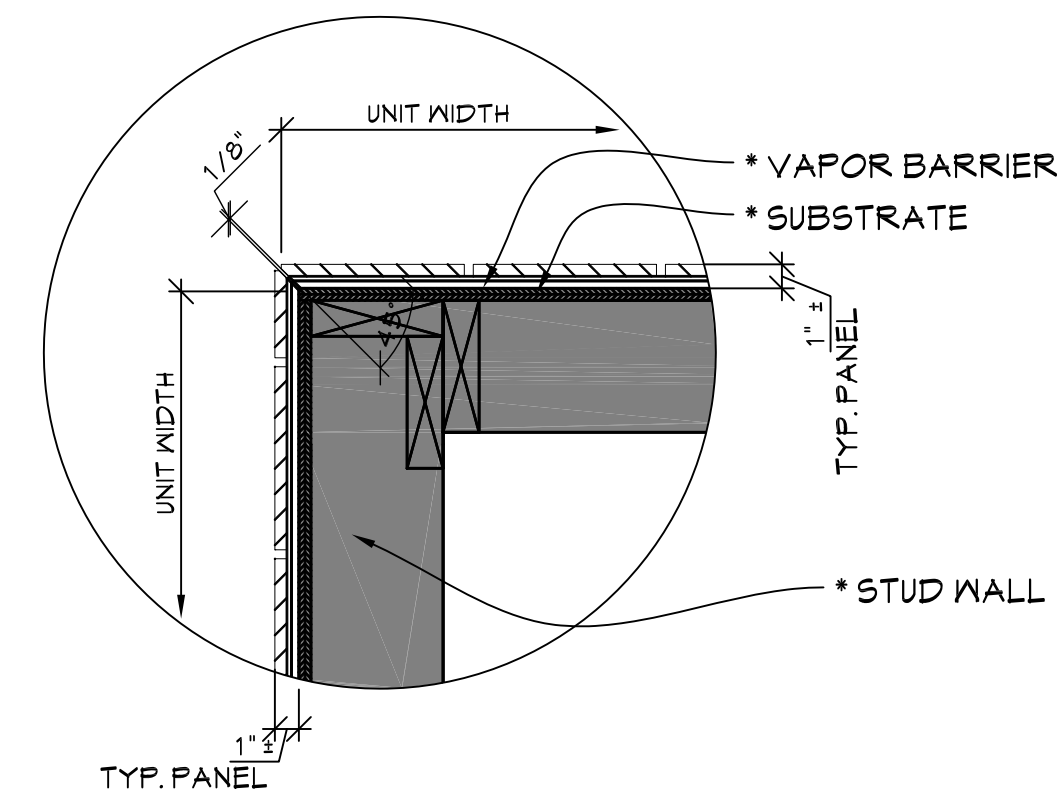
Brickwal System

System Layout

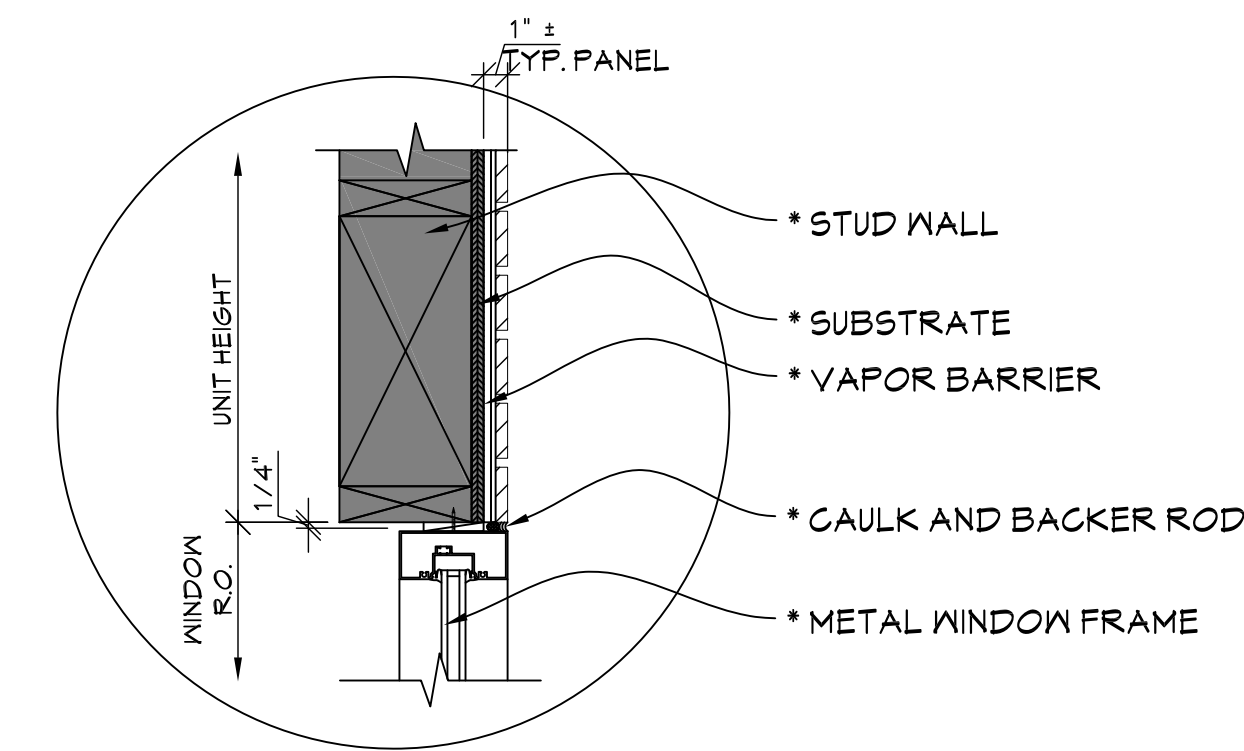
This drawing represents a generic sample detail for illustration purposes only.
Actual details utilized may vary due to specific project requirements.



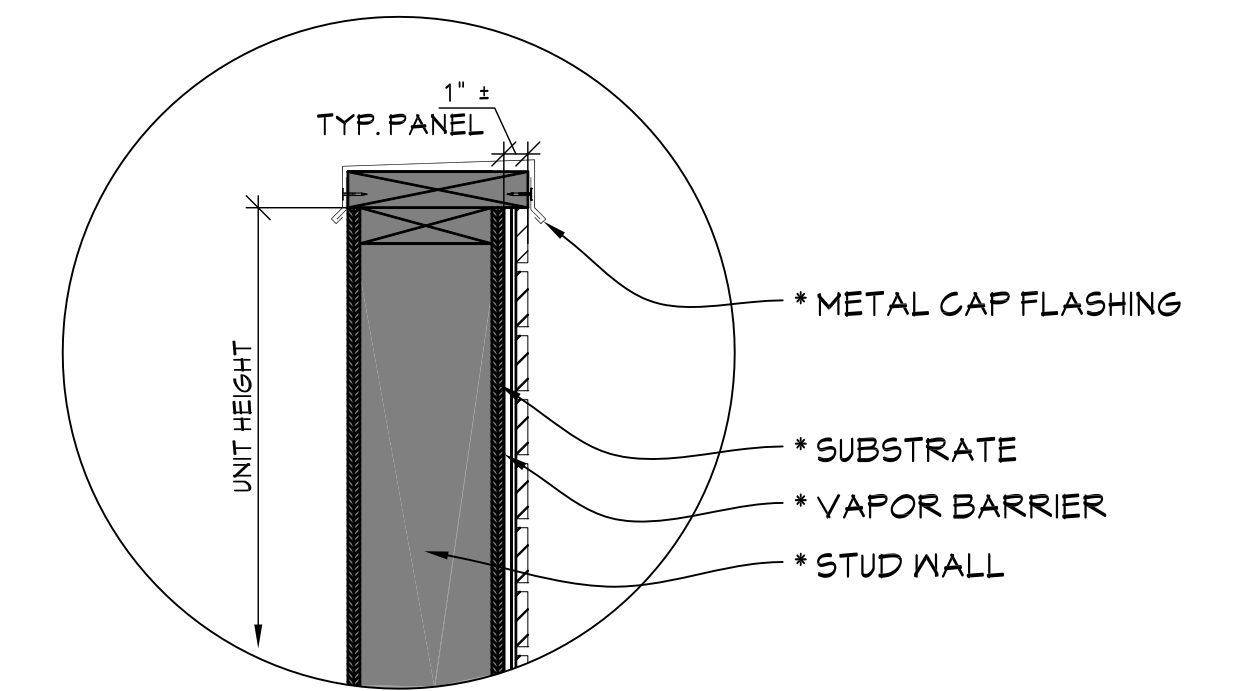
A VERTICAL JOINT
SCALE 1-1/2" = 1'-0"



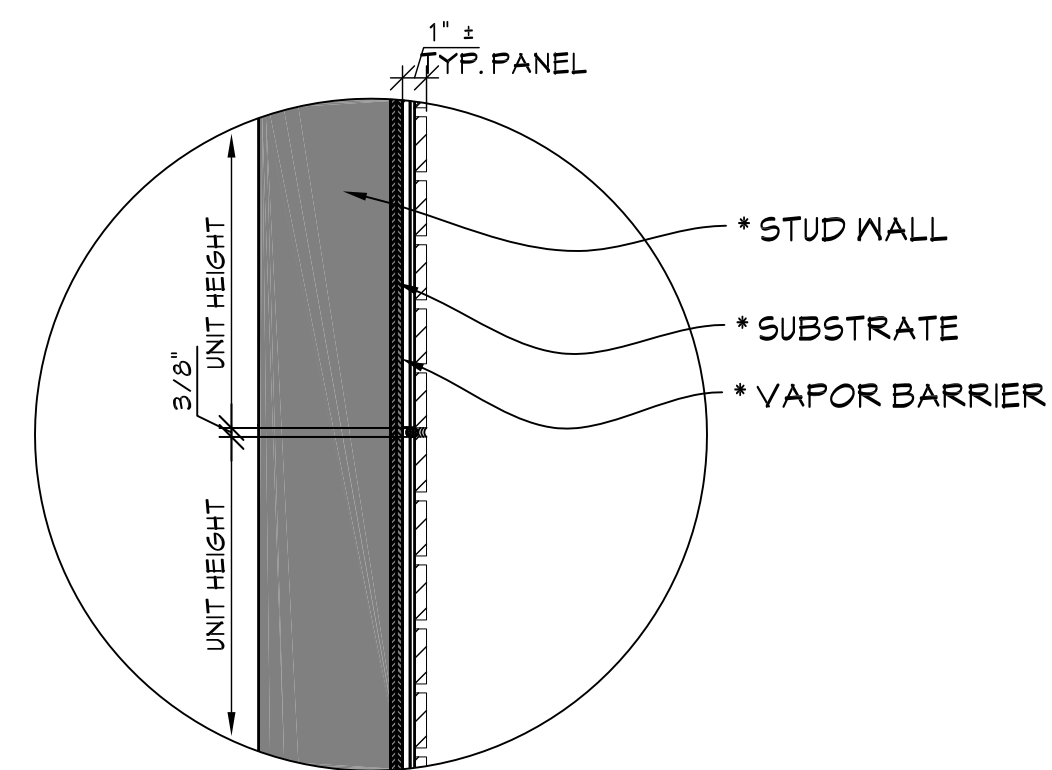
E OUTSIDE CORNER
SCALE 1-1/2" = 1'-0"



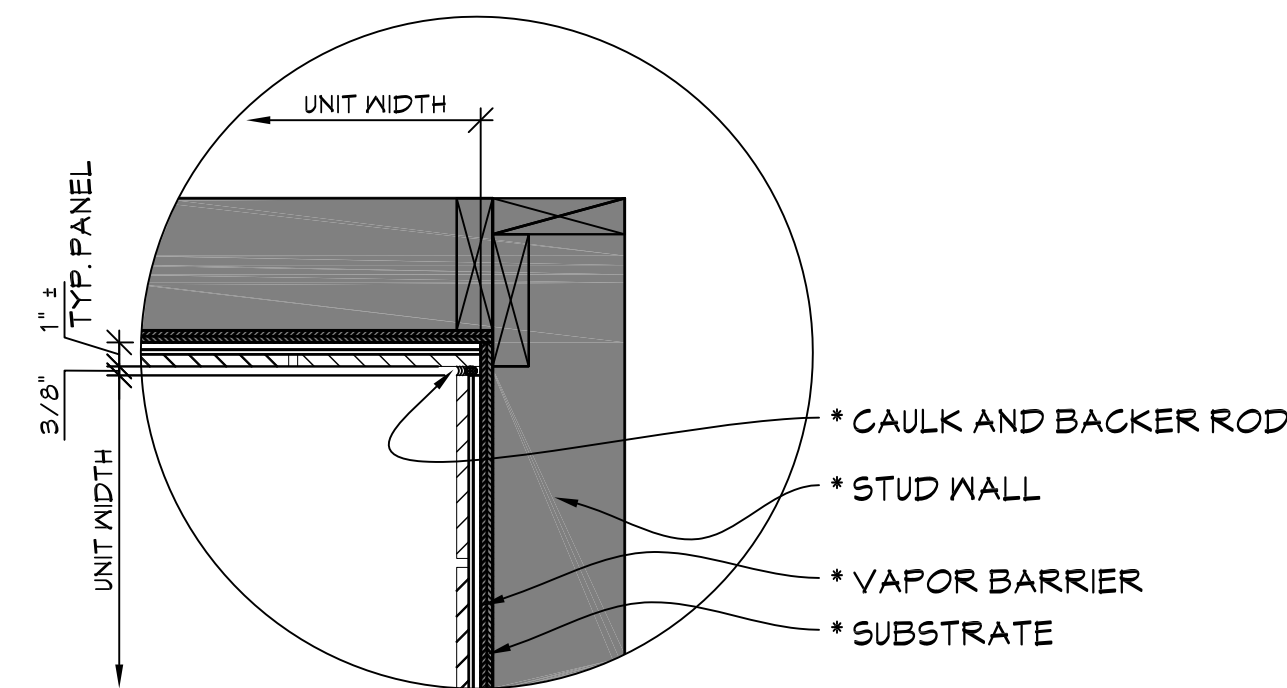
J WINDOW HEAD
SCALE 1-1/2" = 1'-0"



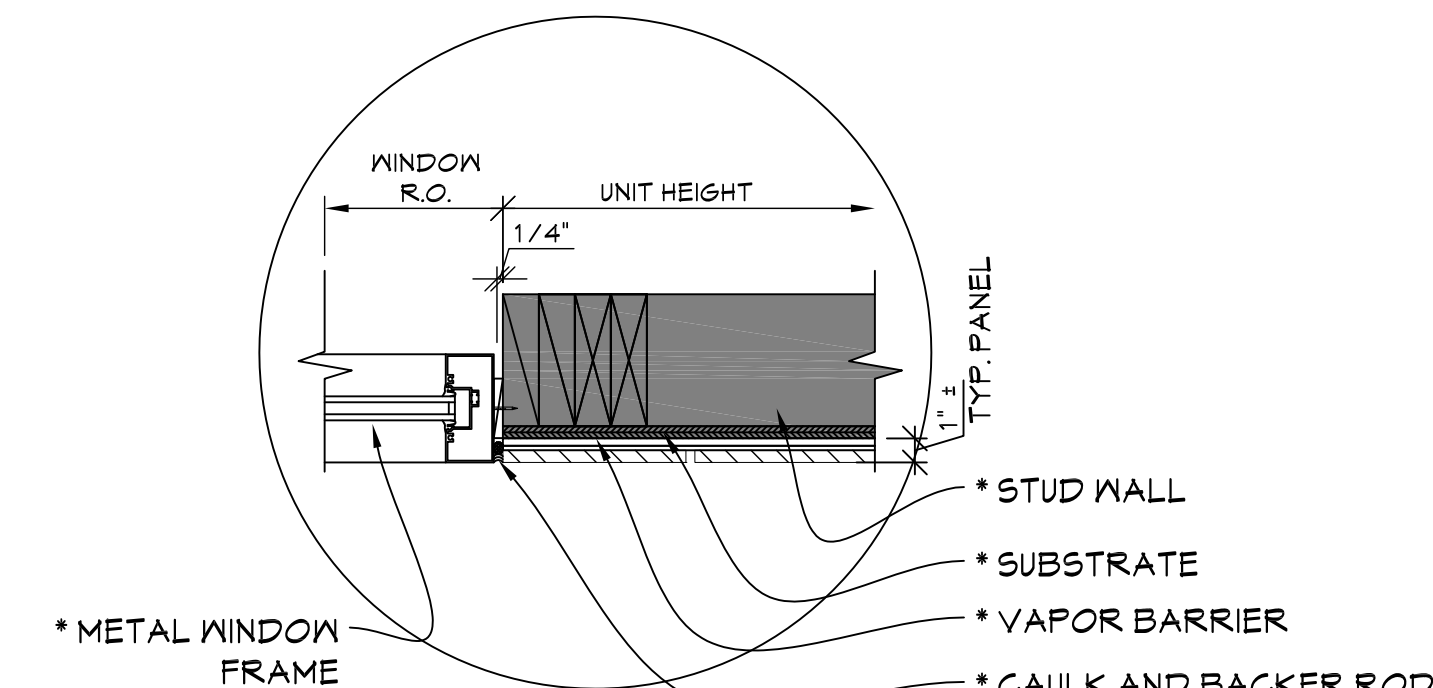
M PARAPET OF WALL
SCALE 1-1/2" = 1'-0"



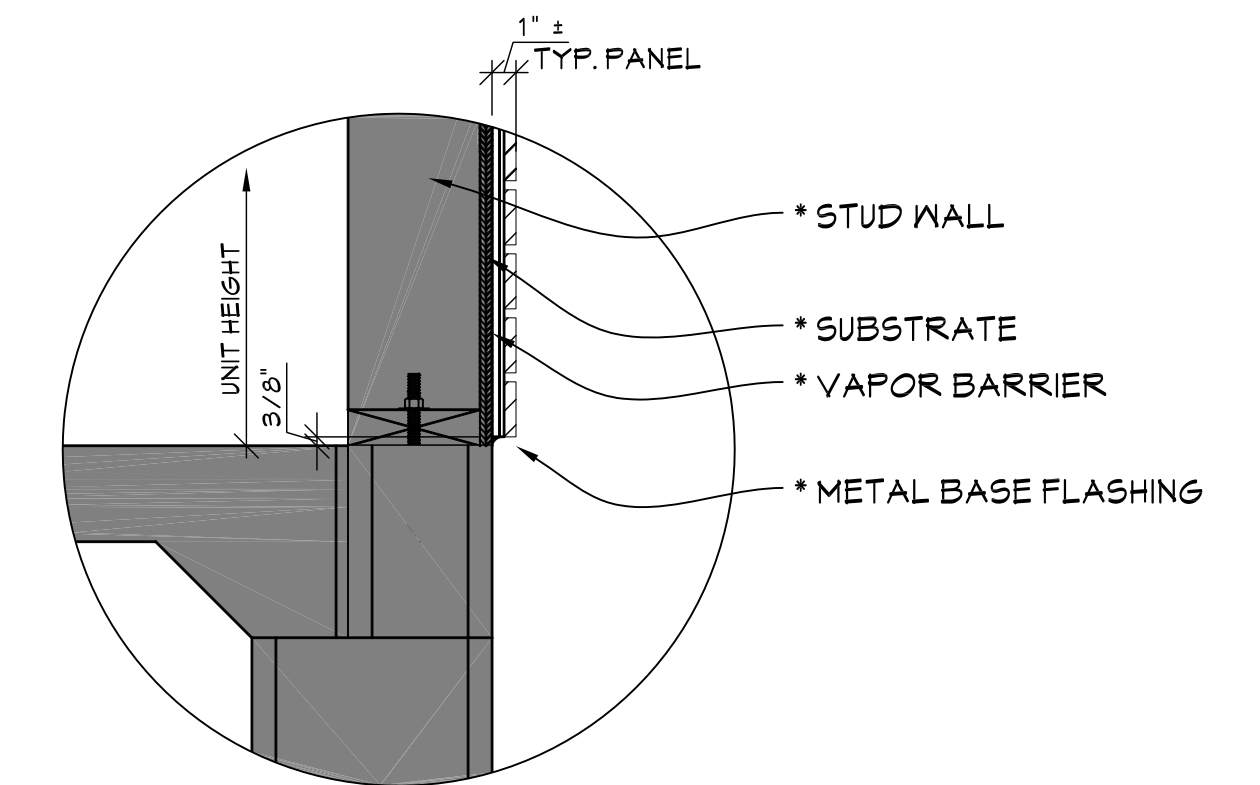
B HORIZONTAL JOINT
SCALE 1-1/2" = 1'-0"



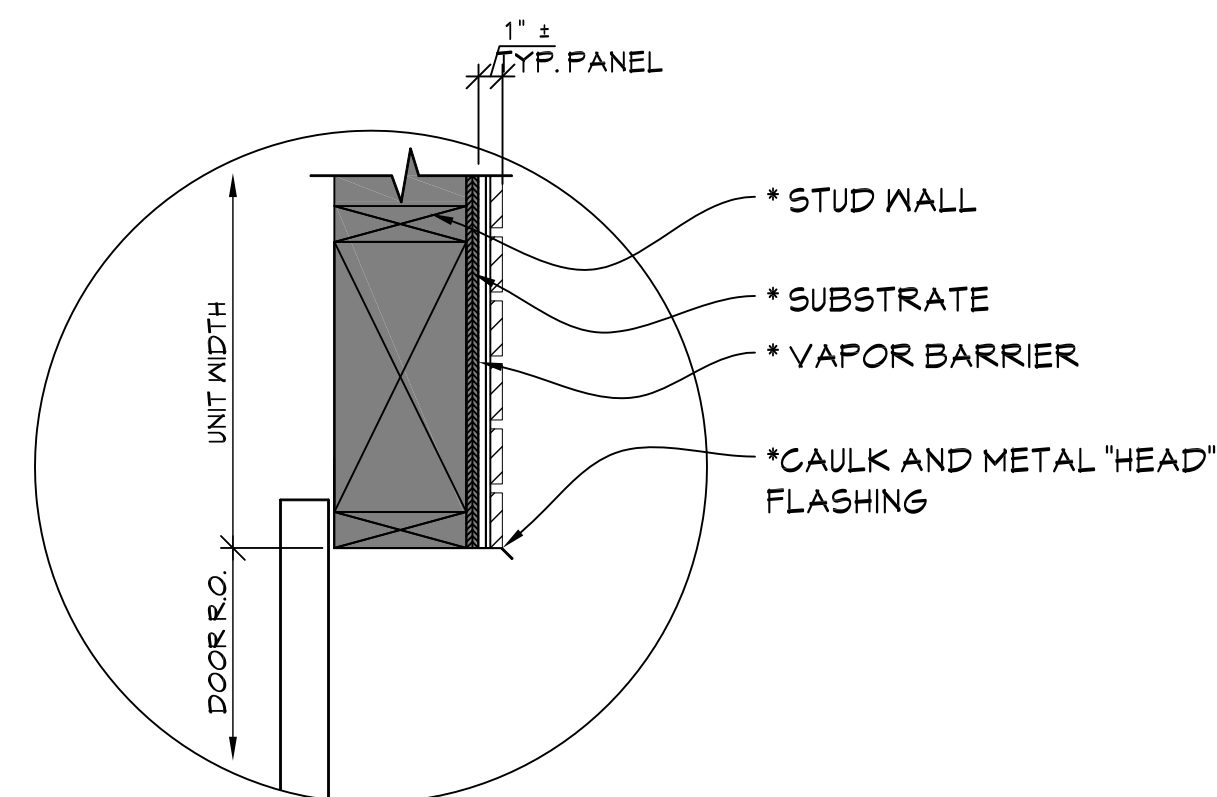
F INSIDE CORNER
SCALE 1-1/2" = 1'-0"



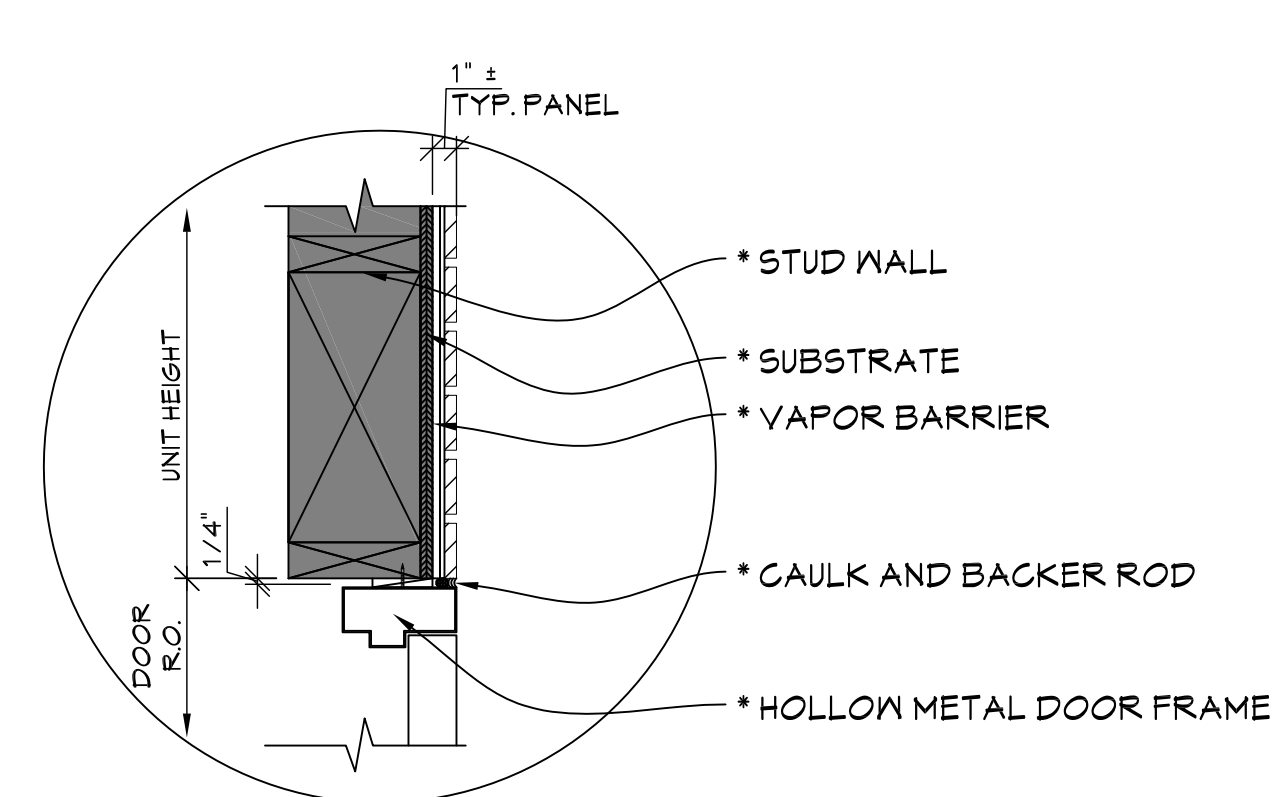
K WINDOW JAMB
SCALE 1-1/2" = 1'-0"



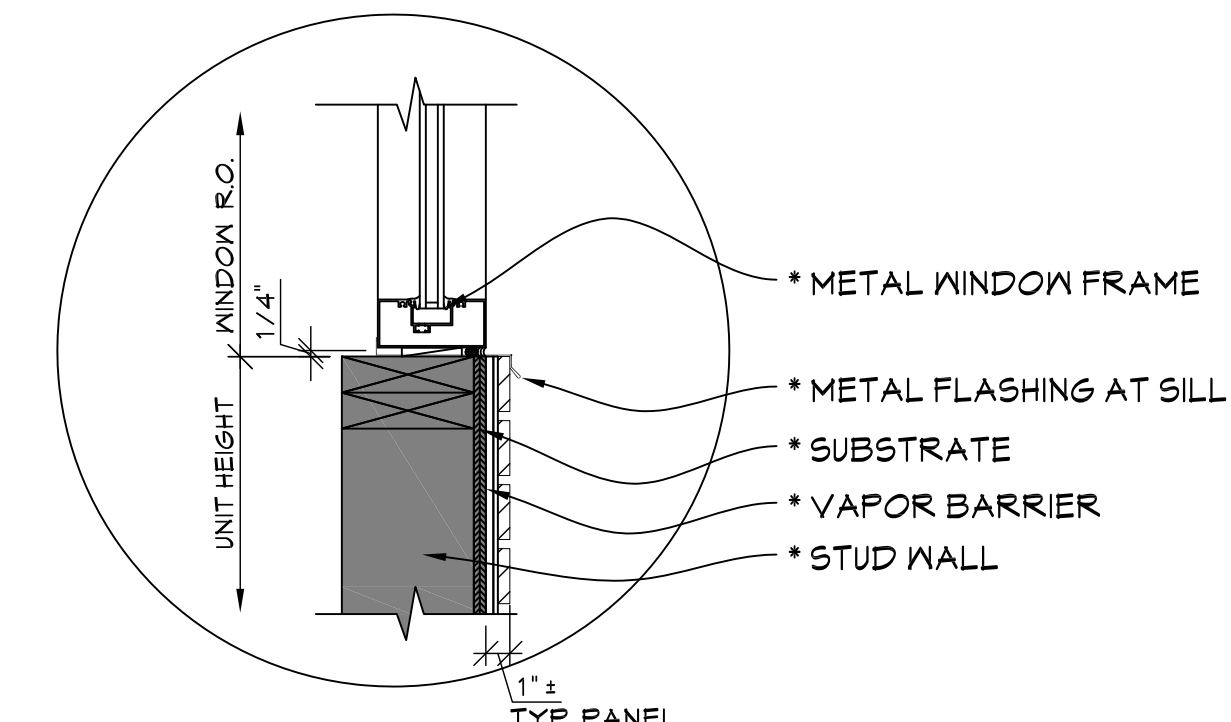
N BASE OF WALL
SCALE 1-1/2" = 1'-0"



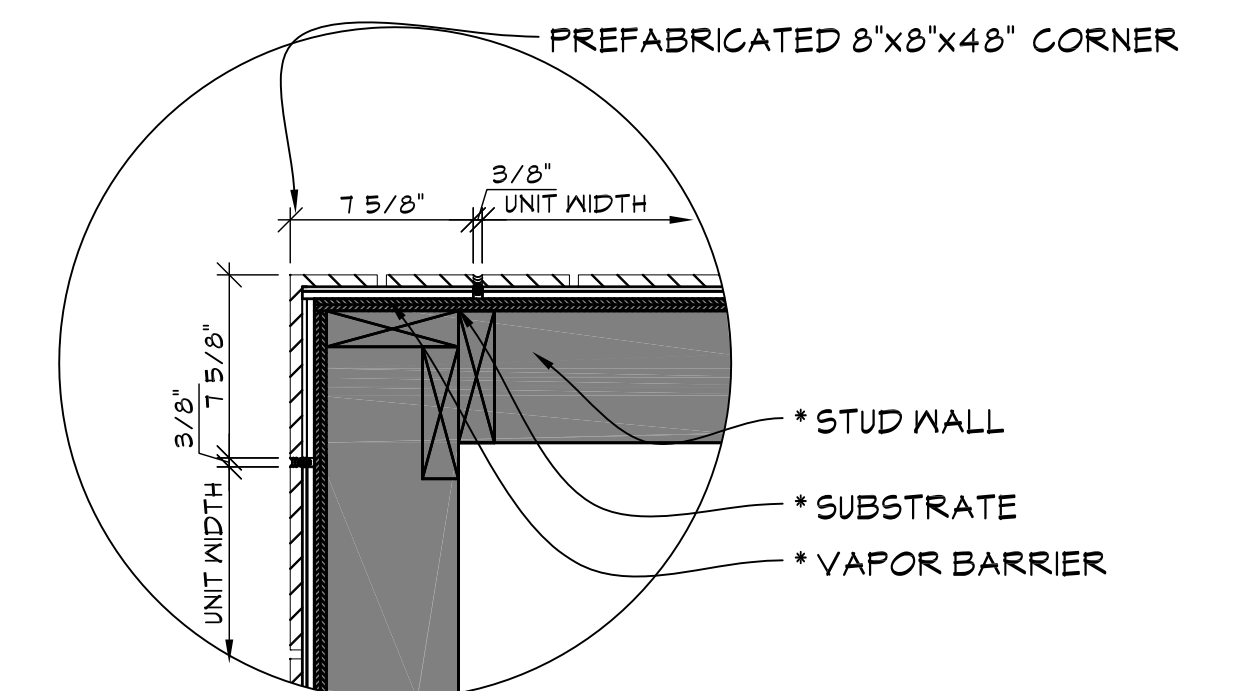
C OVERHEAD DOOR HEAD
SCALE 1-1/2" = 1'-0"



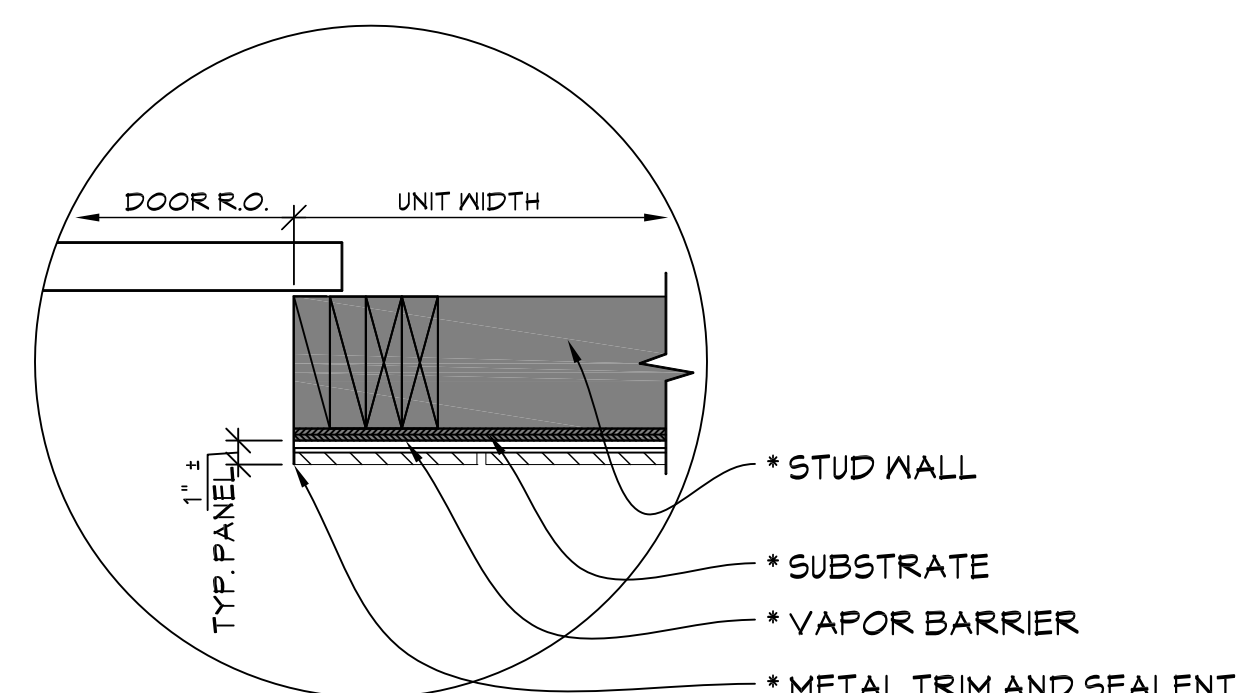
G HOLLOW METAL DOOR HEAD
SCALE 1-1/2" = 1'-0"



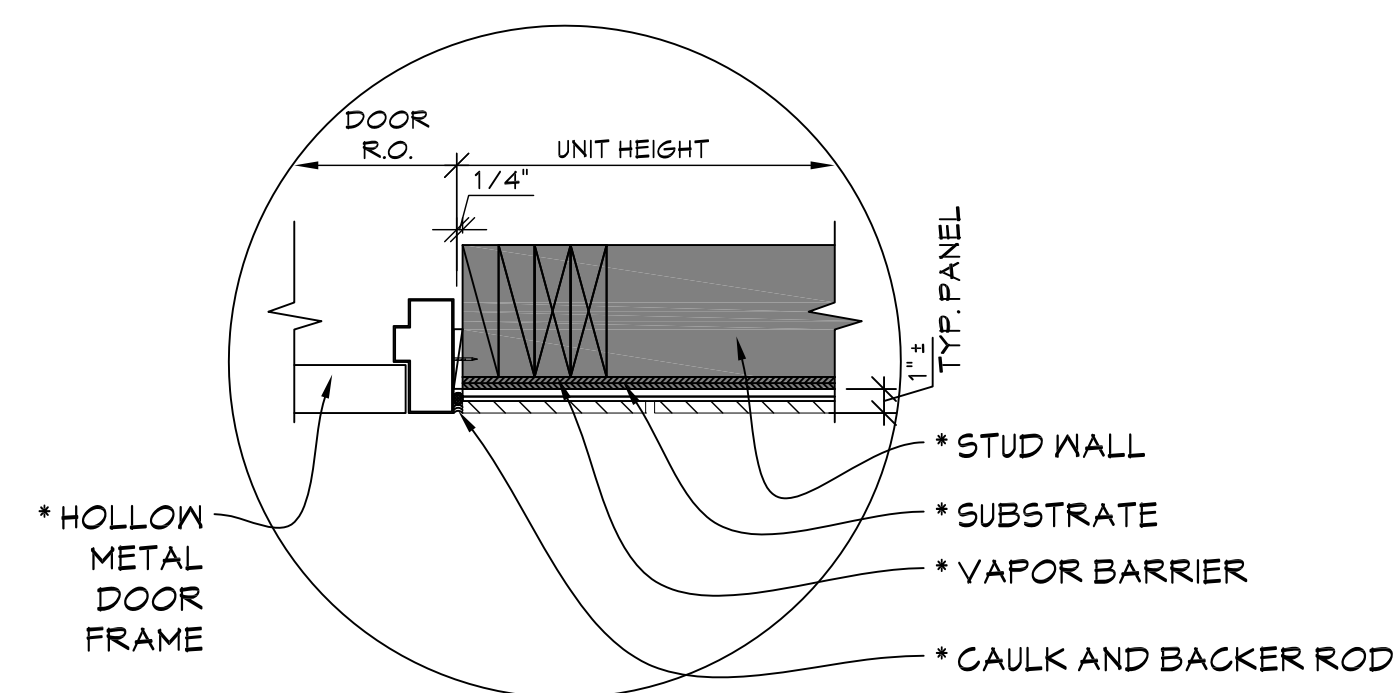
L WINDOW SILL
SCALE 1-1/2" = 1'-0"



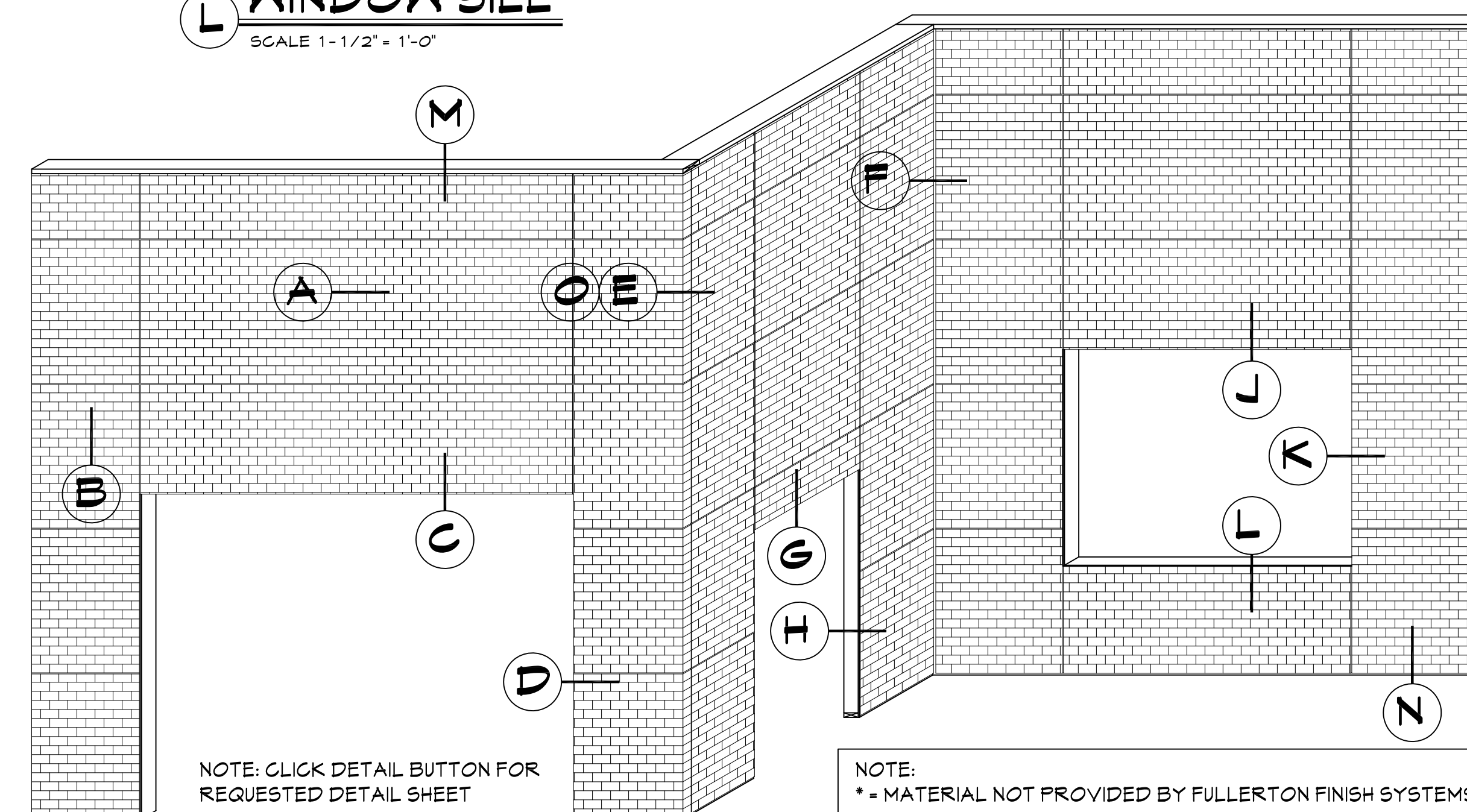
O OPTIONAL OUTSIDE CORNER
SCALE 1-1/2" = 1'-0"



D OVERHEAD DOOR JAMB
SCALE 1-1/2" = 1'-0"



H HOLLOW METAL DOOR JAMB
SCALE 1-1/2" = 1'-0"

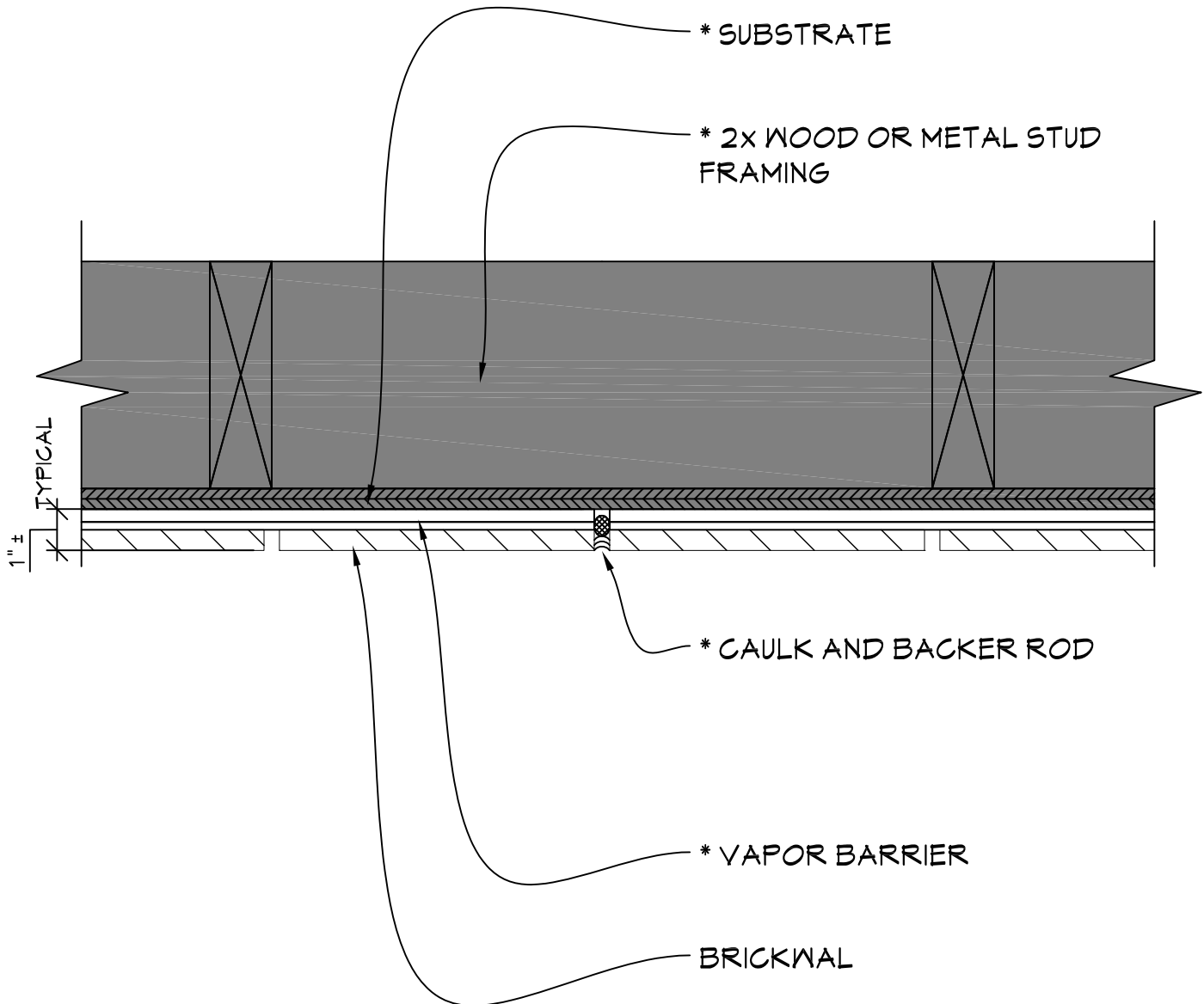


BRICKWAL

FFS
FULLERTON
FINISH SYSTEMS

8645 W. 21st. Street P.O. Box 609
Sand Springs, OK. 74063
PH (918) 246-9995

BRICKWAL



TYPICAL VERTICAL DETAIL

SCALE: 3" = 1'-0"

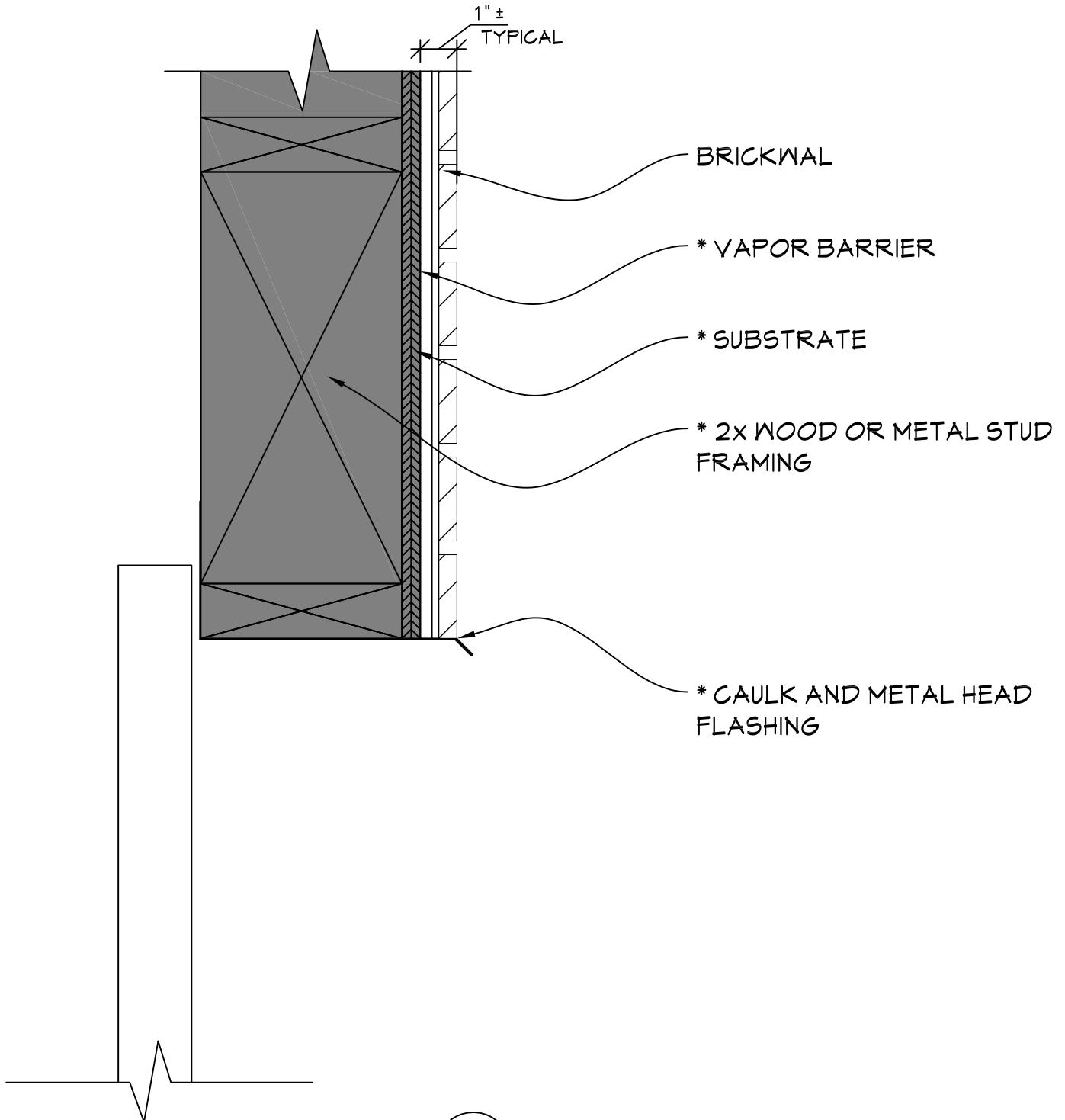
NOTE:

* = MATERIAL NOT PROVIDED BY FULLERTON FINISH SYSTEMS



NOTE:
* = MATERIAL NOT PROVIDED BY FULLERTON FINISH SYSTEMS

BRICKWAL

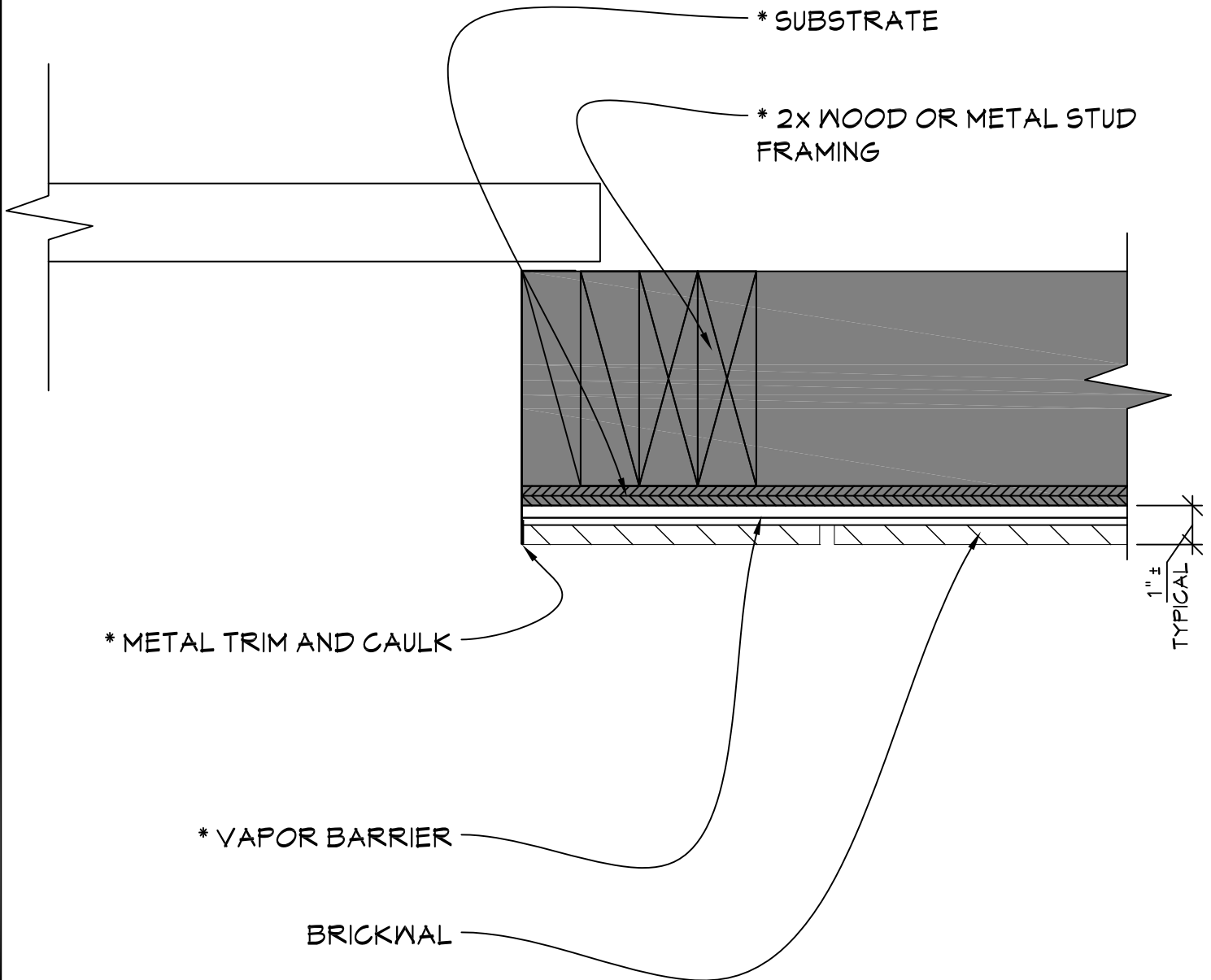


TYPICAL OVERHEAD DOOR DETAIL

SCALE: 3" = 1'-0"

NOTE:
 * = MATERIAL NOT PROVIDED BY FULLERTON FINISH SYSTEMS

BRICKWAL

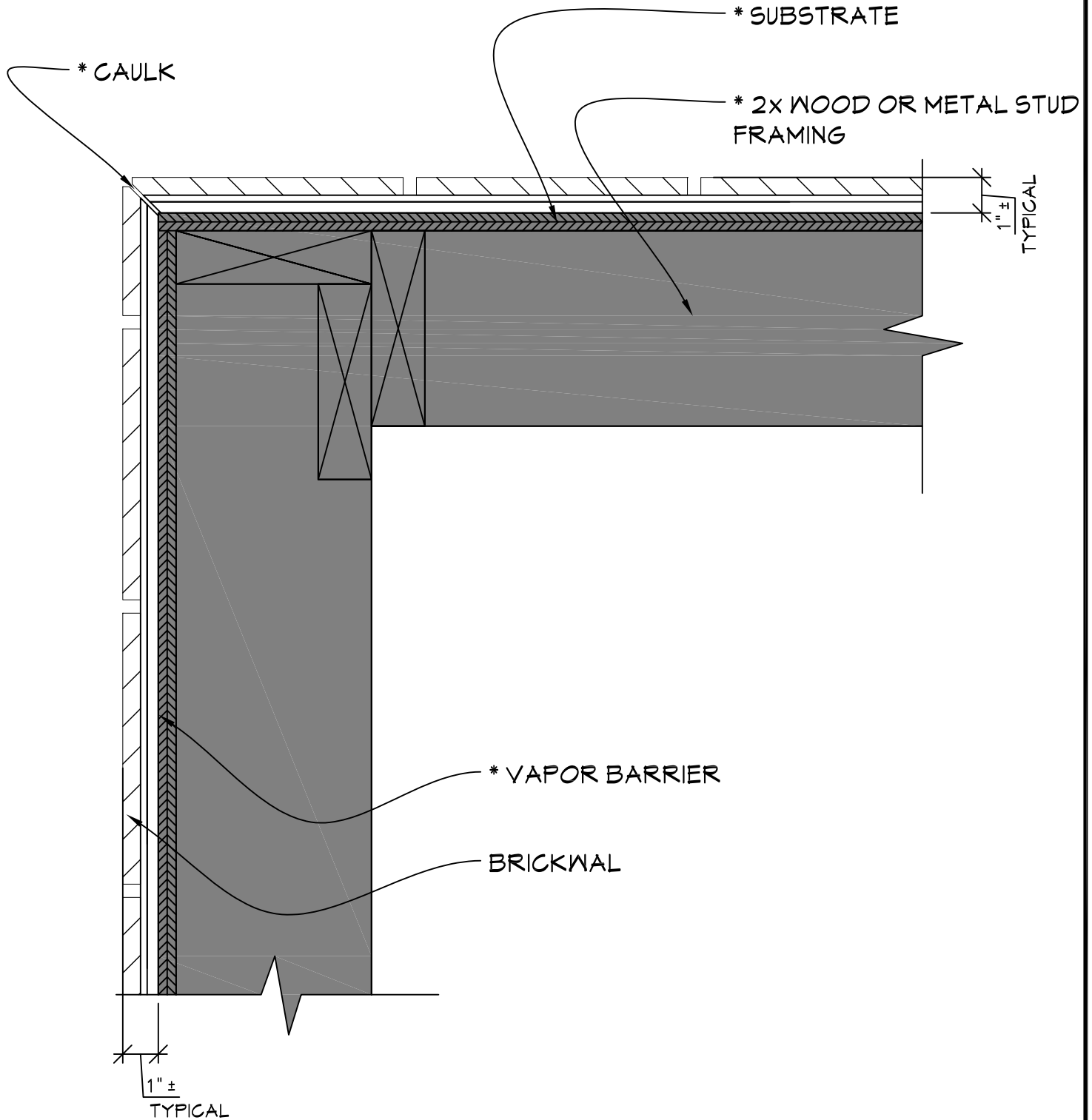


TYPICAL OVERHEAD DOOR JAMB DETAIL

SCALE: 3" = 1'-0"

NOTE:
 * = MATERIAL NOT PROVIDED BY FULLERTON FINISH SYSTEMS

BRICKWAL

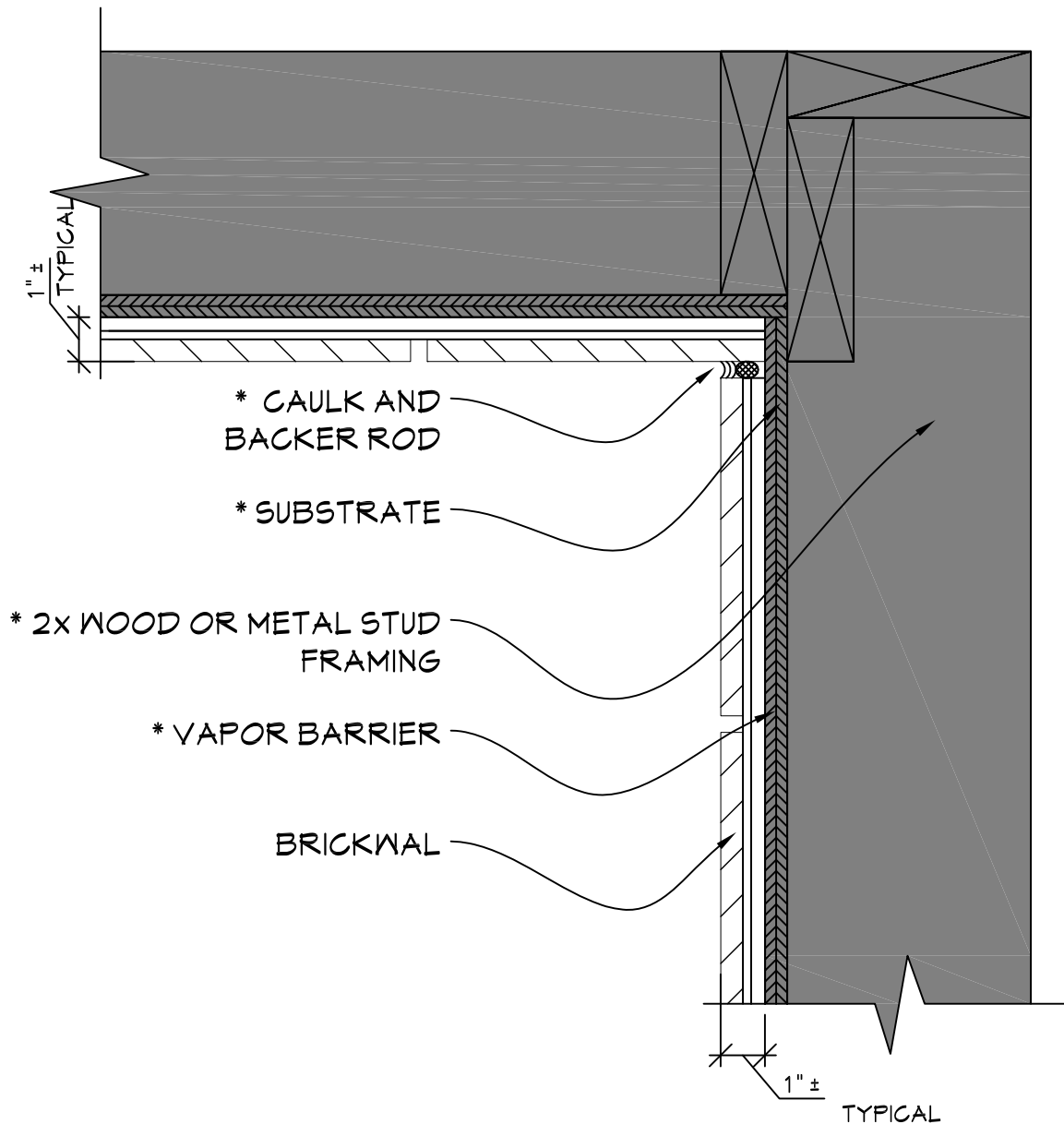


TYPICAL OUTSIDE CORNER DETAIL

SCALE: 3" = 1'-0"

NOTE:
 * = MATERIAL NOT PROVIDED BY FULLERTON FINISH SYSTEMS

BRICKWAL

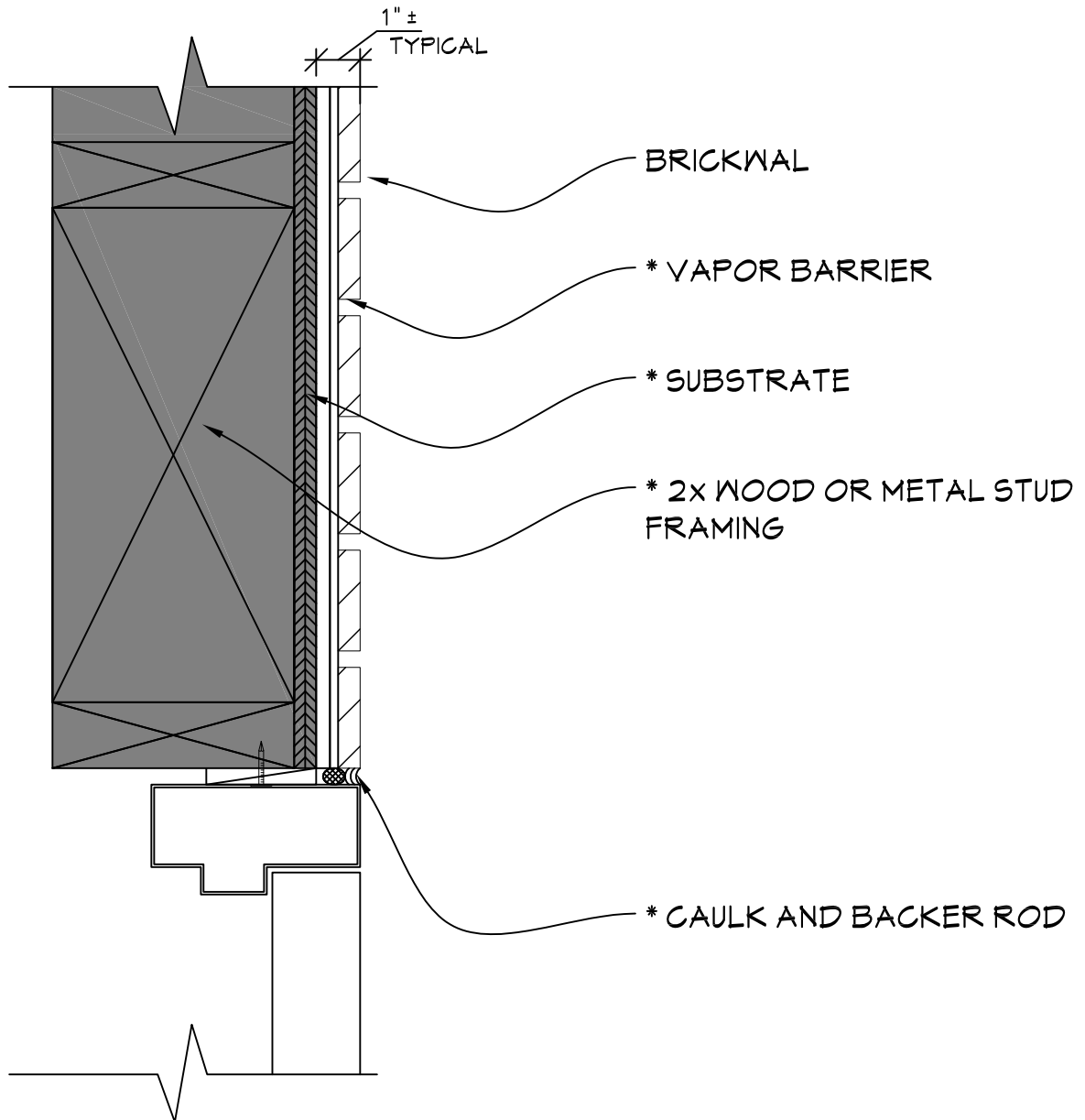


TYPICAL INSIDE CORNER DETAIL

SCALE: 3" = 1'-0"

NOTE:
 * = MATERIAL NOT PROVIDED BY FULLERTON FINISH SYSTEMS

BRICKWAL

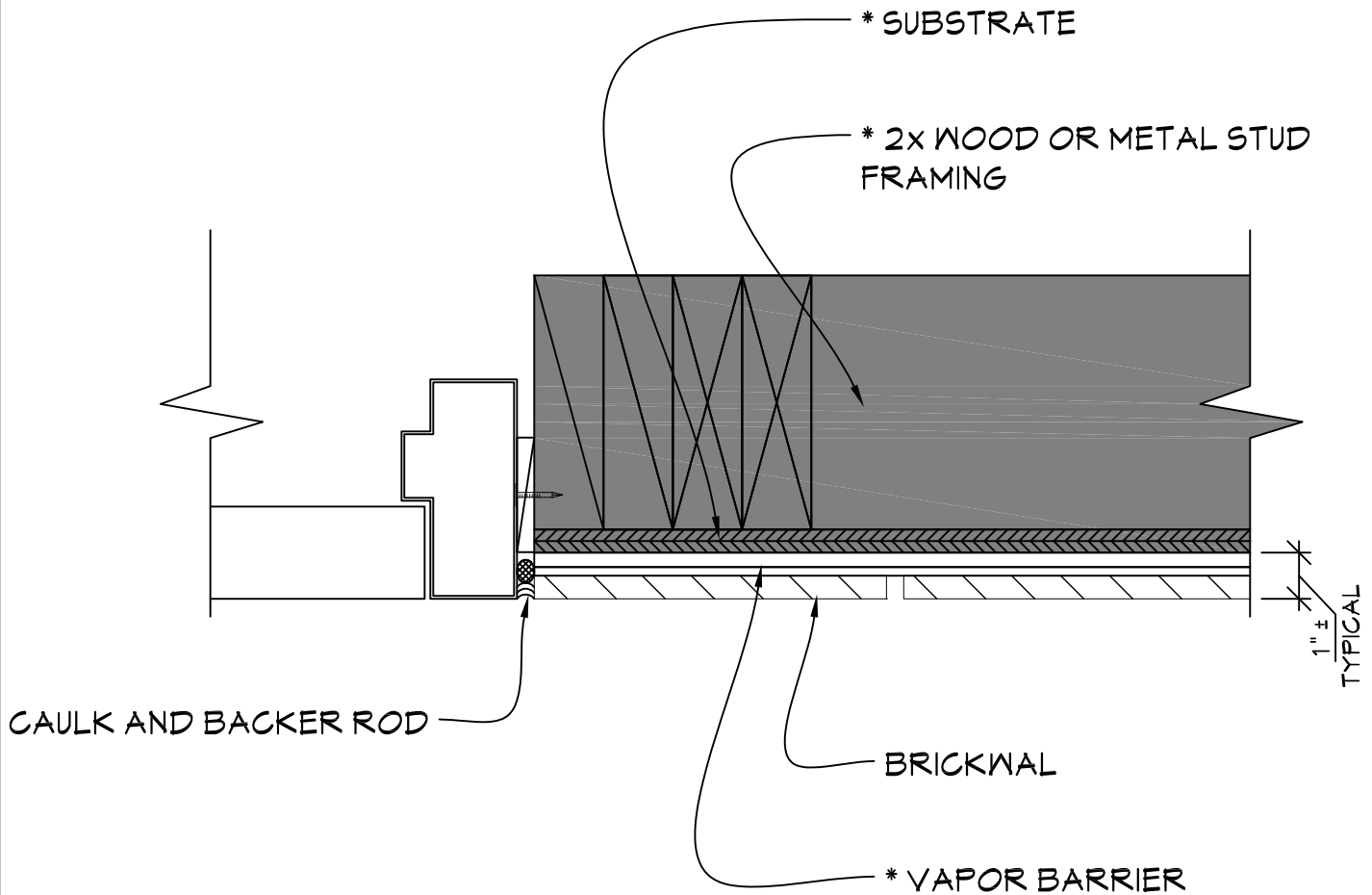


TYPICAL DOOR HEAD DETAIL

SCALE: 3" = 1'-0"

NOTE:
 * = MATERIAL NOT PROVIDED BY FULLERTON FINISH SYSTEMS

BRICKWAL

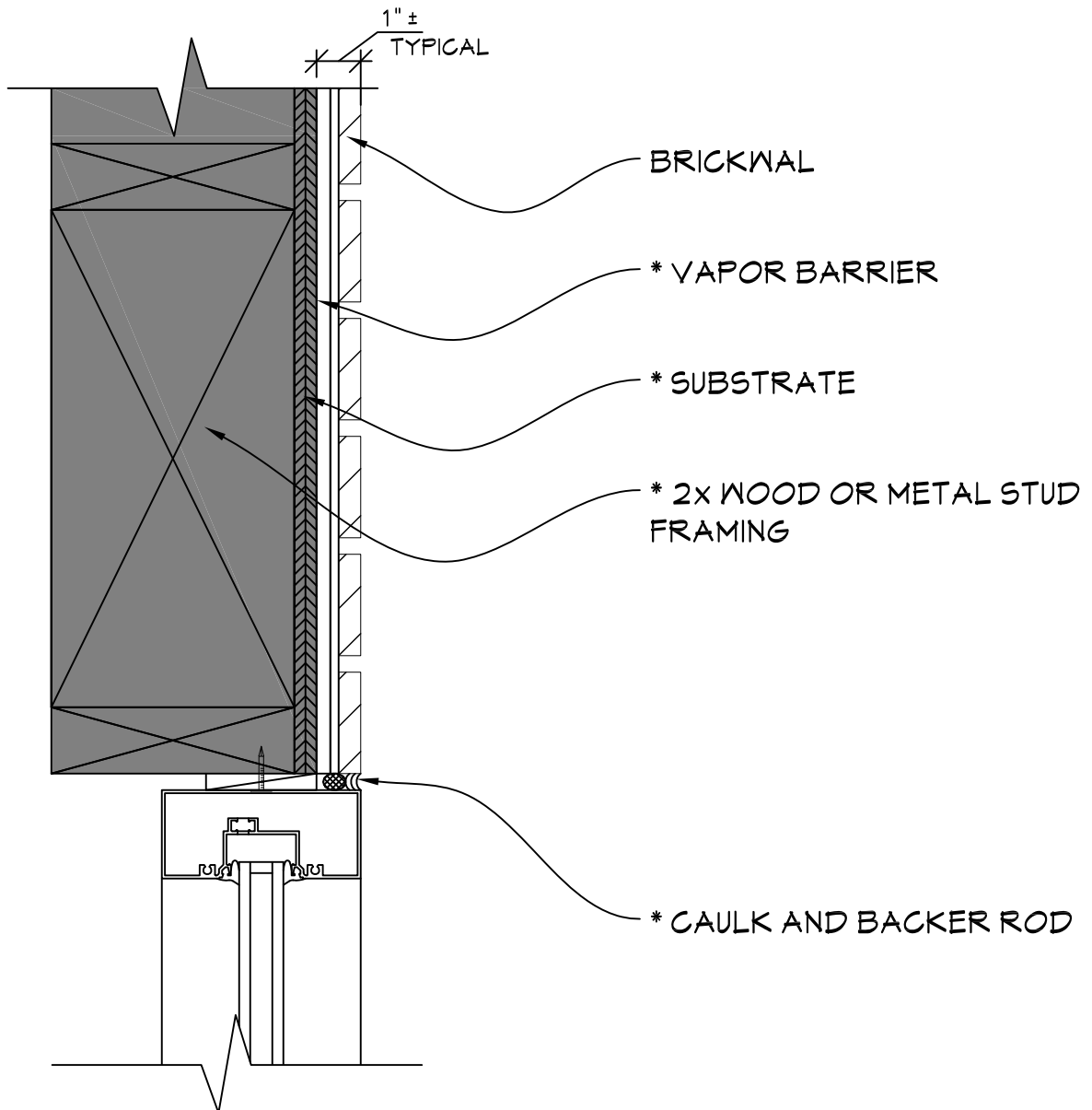


TYPICAL DOOR JAMB DETAIL

SCALE: 3" = 1'-0"

NOTE:
 * = MATERIAL NOT PROVIDED BY FULLERTON FINISH SYSTEMS

BRICKWAL

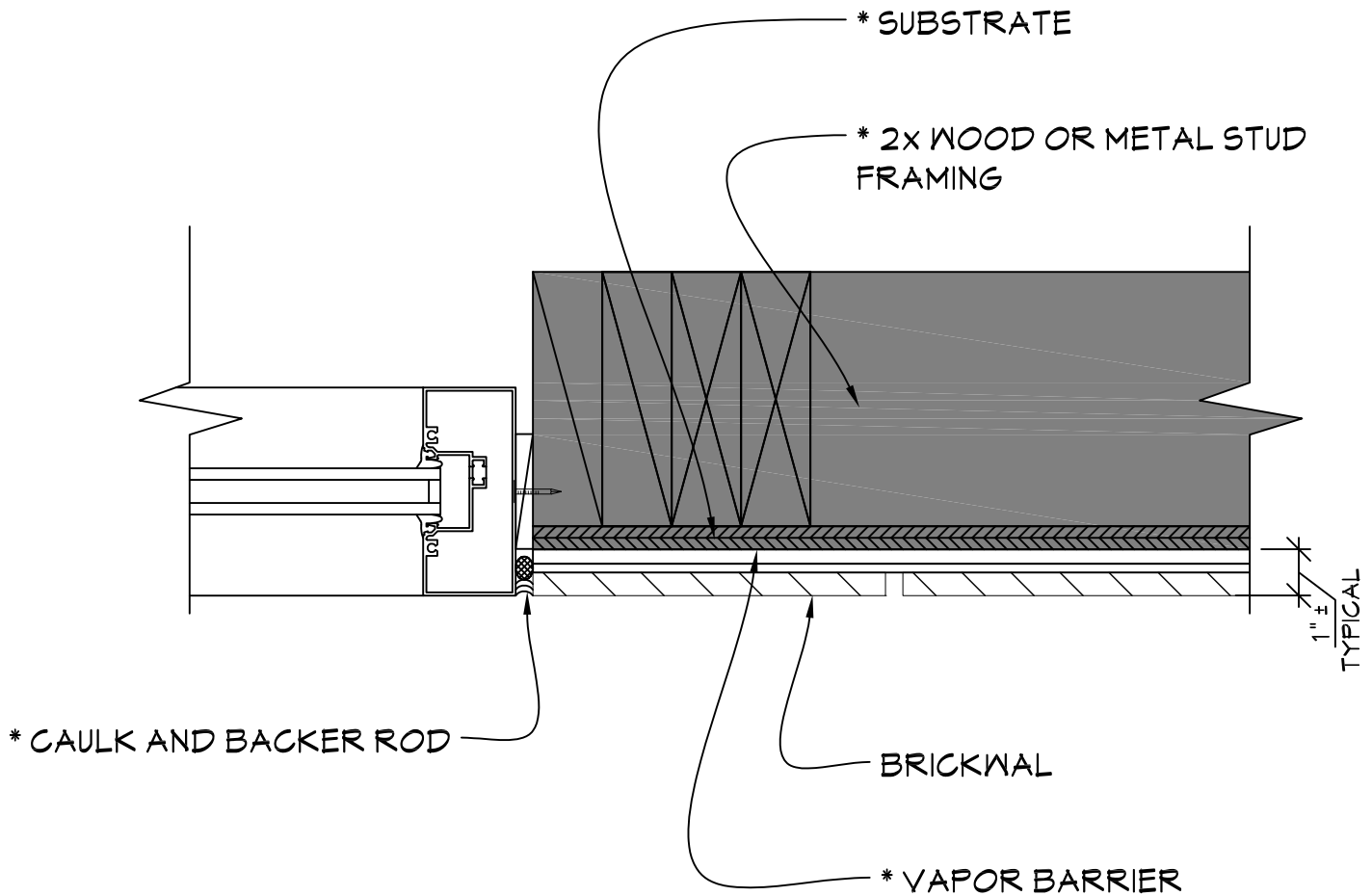


TYPICAL WINDOW HEAD DETAIL

SCALE: 3" = 1'-0"

NOTE:
* = MATERIAL NOT PROVIDED BY FULLERTON FINISH SYSTEMS

BRICKWAL

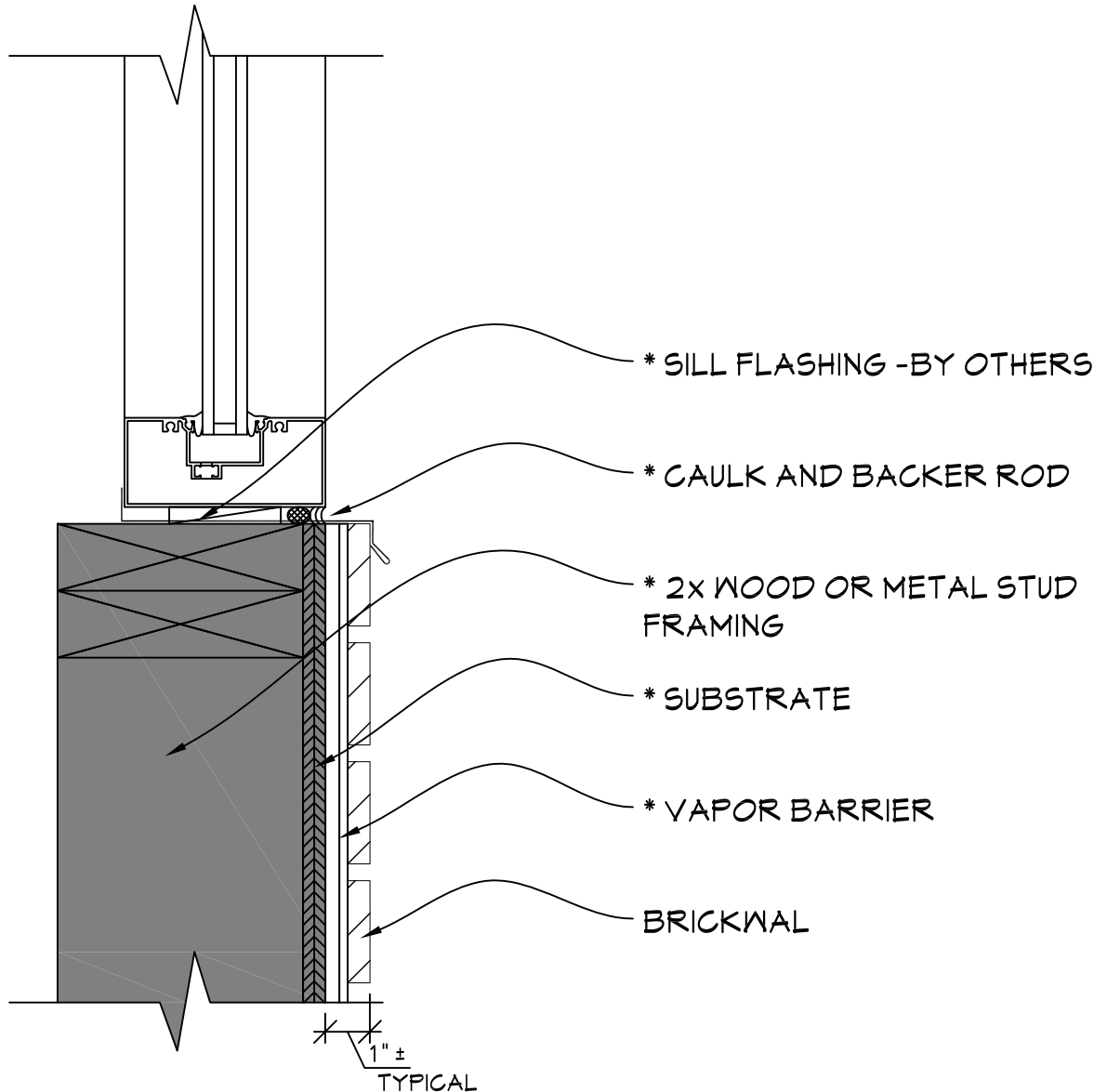


TYPICAL WINDOW JAMB DETAIL

SCALE: 3" = 1'-0"

NOTE:
 * = MATERIAL NOT PROVIDED BY FULLERTON FINISH SYSTEMS

BRICKWAL

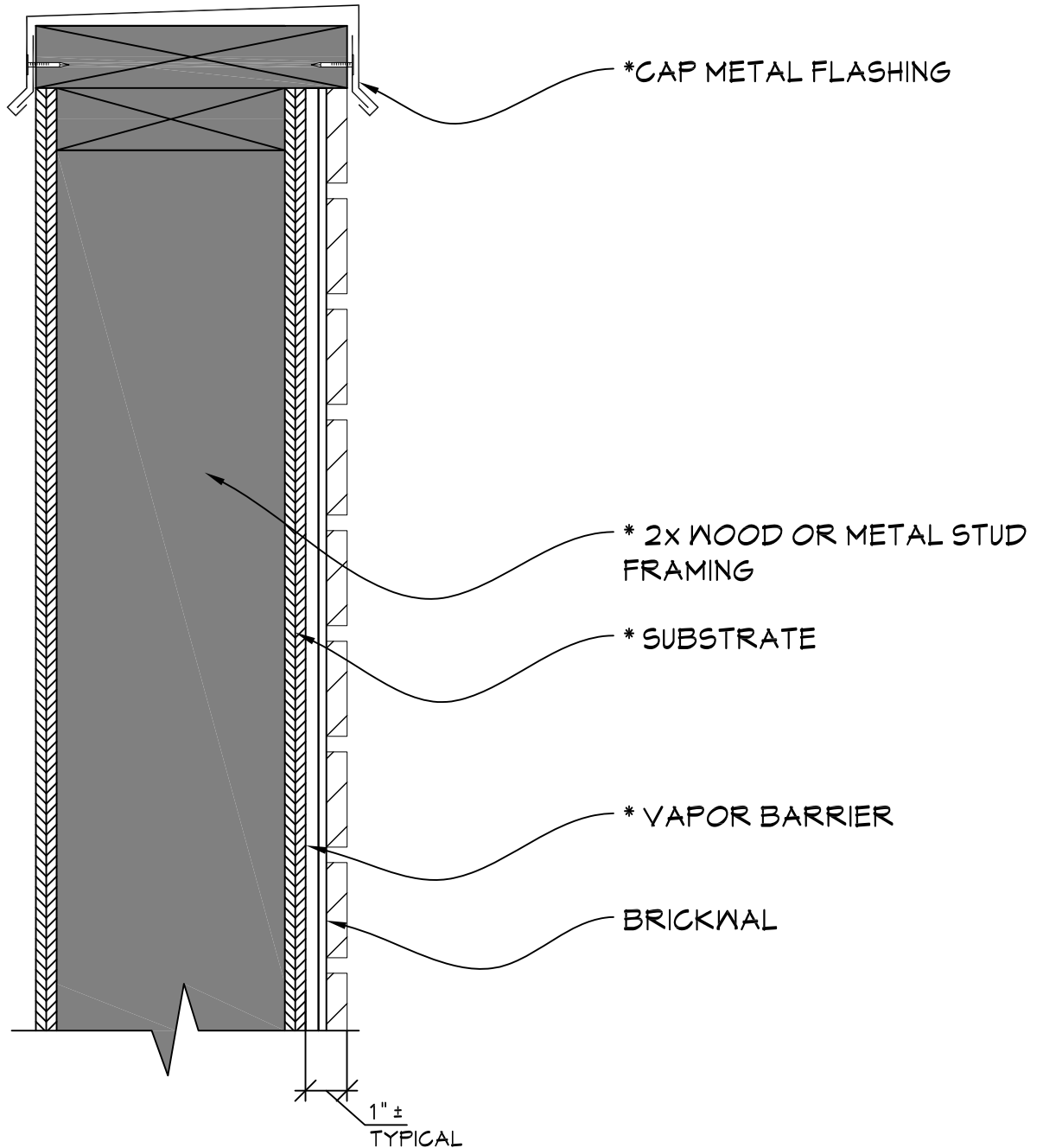


TYPICAL WINDOW SILL DETAIL

SCALE: 3" = 1'-0"

NOTE:
 * = MATERIAL NOT PROVIDED BY FULLERTON FINISH SYSTEMS

BRICKWAL

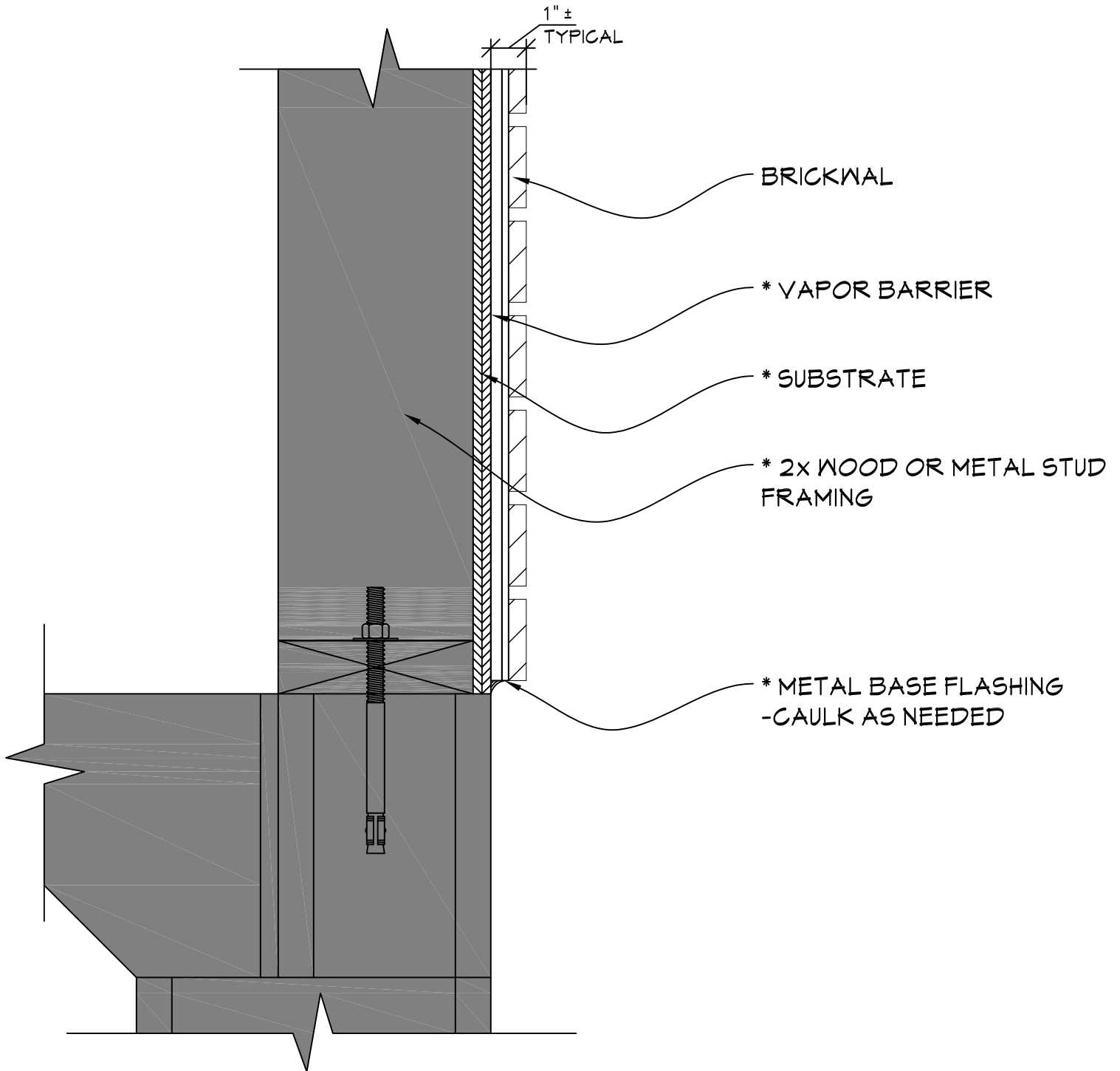


TYPICAL PARAPET DETAIL

SCALE: 3" = 1'-0"

NOTE:
* = MATERIAL NOT PROVIDED BY FULLERTON FINISH SYSTEMS

BRICKWAL



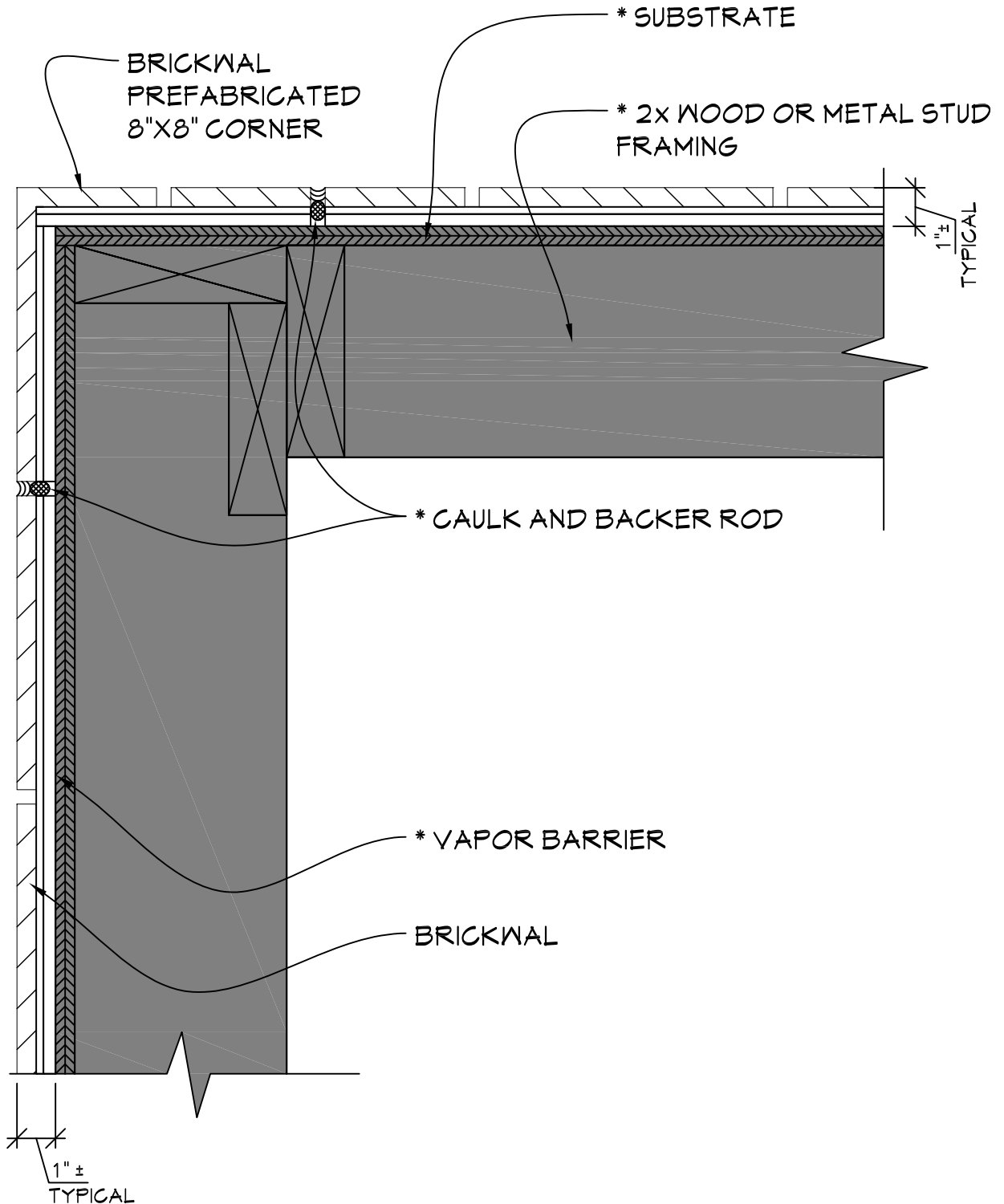
TYPICAL BASE DETAIL

SCALE: 3" = 1'-0"

NOTE:

* = MATERIAL NOT PROVIDED BY FULLERTON FINISH SYSTEMS

BRICKWAL



OPTIONAL OUTSIDE PREFAB CORNER DETAIL

SCALE: 3" = 1'-0"

NOTE:
 * = MATERIAL NOT PROVIDED BY FULLERTON FINISH SYSTEMS