

# EnduraWal™

From Fullerton Finish Systems, Inc.



## Engineered For An Attractive, Durable Exterior Finish.

EnduraWal™ from Fullerton Finish Systems is a reinforced cement board product, distinctive acrylic stucco finish coat. EnduraWal™ is designed with a base coat, fiberglass mesh and strong polymer finish, ensuring you a great look that won't break, shift or crack.

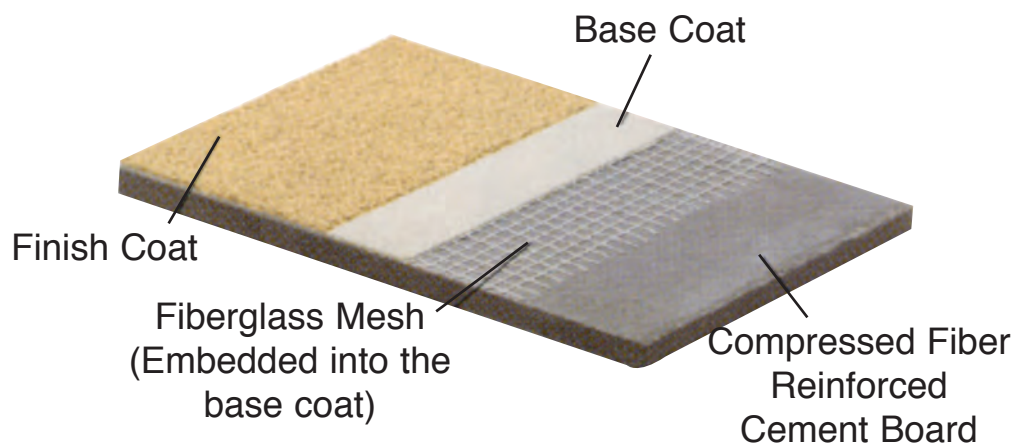
## The Fullerton Finish Systems Advantage...

- Installs easily -- no specialist subcontractors are required
- Wide choice of color and textures -- custom matches possible
- Available in sand float, wormtrail and blown textures
- You are free to design the look you want - at a price you can afford
- Easy and quick installation by your crew - quicker project completion
- To obtain architectural distinction you can incorporate other products offered by Fullerton Finish Systems onto the same panel, or add special shapes

## EnduraWal™ For Great Exteriors.

### *EnduraWal™ Advantage*

EnduraWal™ is engineered for durability because the substrate is compressed fiber reinforced cement board. You can easily add architectural features to achieve design objectives. EnduraWal™ is made for an intensive-use facility. Panelized, EnduraWal™ gives you flexibility for fast, easy erection.



### The Fullerton Finish System Advantage.

What is the Fullerton Finish System advantage? It is the combination of experience and superior service. Our skilled architectural and engineering staff will assist you with detailed information on attachments and erection. With EnduraWal™ from Fullerton Finish Systems, you get durability, speed and your desired look.



*The Quality Solution for New & Remodel Exterior Finishing*

PO Box 609, Sand Springs, OK 74063 • Phone 918.246.9995 • Toll Free 866.915.9995 • Fax 918.246.9976  
[www.fullertonfinishesystems.com](http://www.fullertonfinishesystems.com)

# EnduraWal™

From Fullerton Finish Systems, Inc.

## Veneer Panel Specification

### Part 1 - General

#### 1.1 Description

A. Work described herein consists of furnishing factory fabricated veneer panels with an exterior face of textured polymer finish on mineral fiber reinforced cement board as manufactured in Sand Springs, Oklahoma by Fullerton Finish Systems, Inc. - (918) 246-9995

B. Manufacturer shall have been continuously engaged in the manufacture of exterior wall panels for 35 or more years.

1.2 Warranty - Manufacturer to warranty from date of purchase against defective materials or workmanship in fabrication for a period of five years.

### Part 2 - Products

#### 2.1 Description

A. Textured polymer finish shall be \_\_\_\_\_ per approved sample. All material shall be obtained from one source to match in color as nearly as possible.

B. Textured polymer finish shall conform to requirements of ASTM tests: E108 (modified), E84 (tunnel test), D968 (abrasion resistance) and Mil. Std. 810 Method 508.

C. Mineral fiber reinforced cement board (M.F.B.) substrate shall meet the following minimum requirements:

<b>Compressive Strength (lb/in<sup>2</sup>)</b>	<b>7000</b>
<b>Flexural Strength (lb/in<sup>2</sup>)</b>	<b>2000</b>
<b>Percent Moisture Movement</b>	
50% to 90% RH	0.06%
<b>Thermal "R" Value</b>	0.15
<b>Burn Character</b>	
<b>Flame / Smoke</b>	0/5

D. Product samples and shop drawings, if required, shall be submitted for approval before panel fabrication.

#### 2.2 Performance

A. Panel substrate and textured polymer finish shall withstand the following tests without noted change in appearance or material failure:

**1,000 hours in Atlas Twinarc weatherometer.**

**14 cycles salt fog and thermal shock.**

**100 cycles -50 to +150 degrees F.**

B. All testing shall have been performed by an independent testing facility.

### Part 3 - Execution

#### 3.1 Erection

A. Panels shall be erected plumb and true by qualified workman.

B. Panels shall be aligned and spaced as shown on manufacturer's shop drawings, if required.

C. Panels shall be handled and attached to building structure as per manufacturer's shop drawings, if required, installation procedure and/or architectural drawings.

D. All horizontal or vertical panel joints shall be filled with sealant over bond breaker tape.

E. Accessories

1. Sealant (Equal to Sashco Big Stretch) shall be applied in accordance with sealant manufacturer's recommendations.

2. Bond breaker tape (slick faced polyvinyl chloride tape) minimum of 3/4" wide and equal to #50 by All Type. Tape shall be field applied to surface behind panel joint before panel erection.

3. Fasteners shall be low profile self drilling stainless steel or zinc and clear chromate plated for rust resistance. Fasteners may be color coated to match finish color, if required.

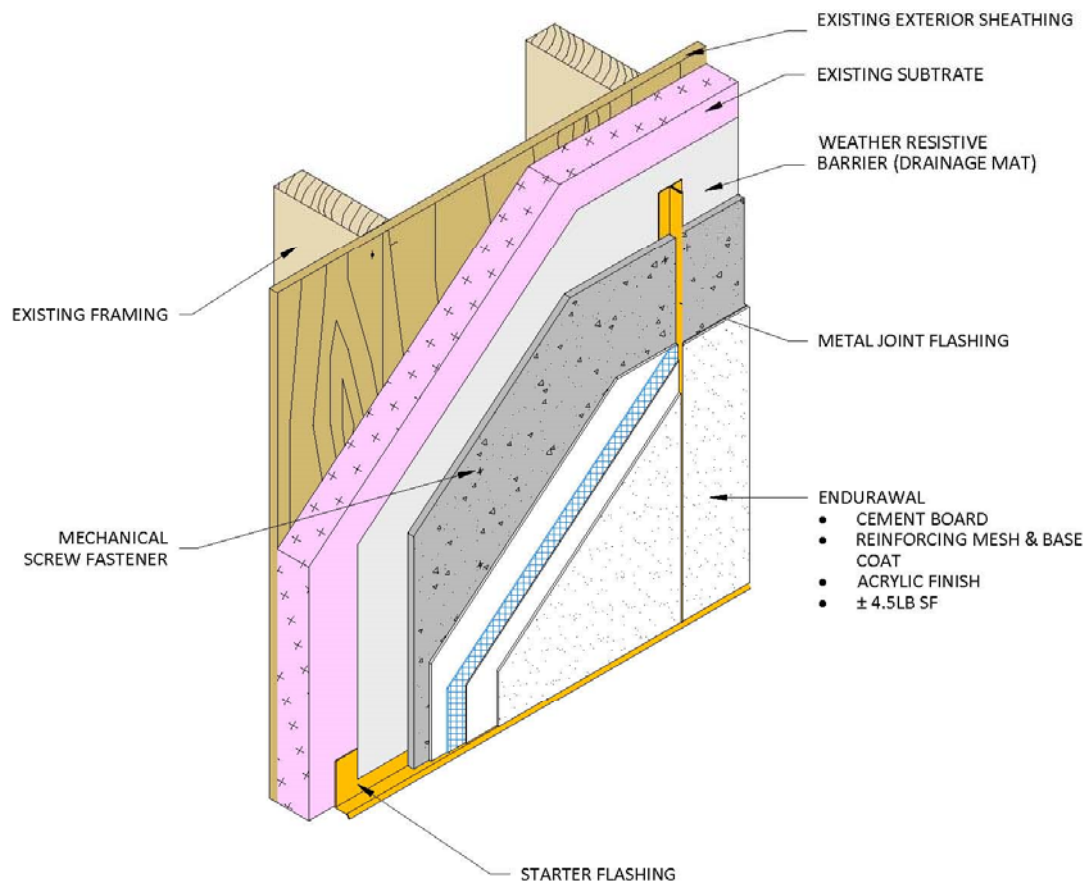
4. All the accessories shall be of size, shape and spacing as shown on manufacturer's shop drawings, if required, and/or listed in manufacturer's Installation Guide.



*The Quality Solution for New & Remodel Exterior Finishing*

PO Box 609, Sand Springs, OK 74063 • Phone 918.246.9995 • Toll Free 866.915.9995 • Fax 918.246.9976  
www.fullertonfinishesystems.com

### (Renovation)



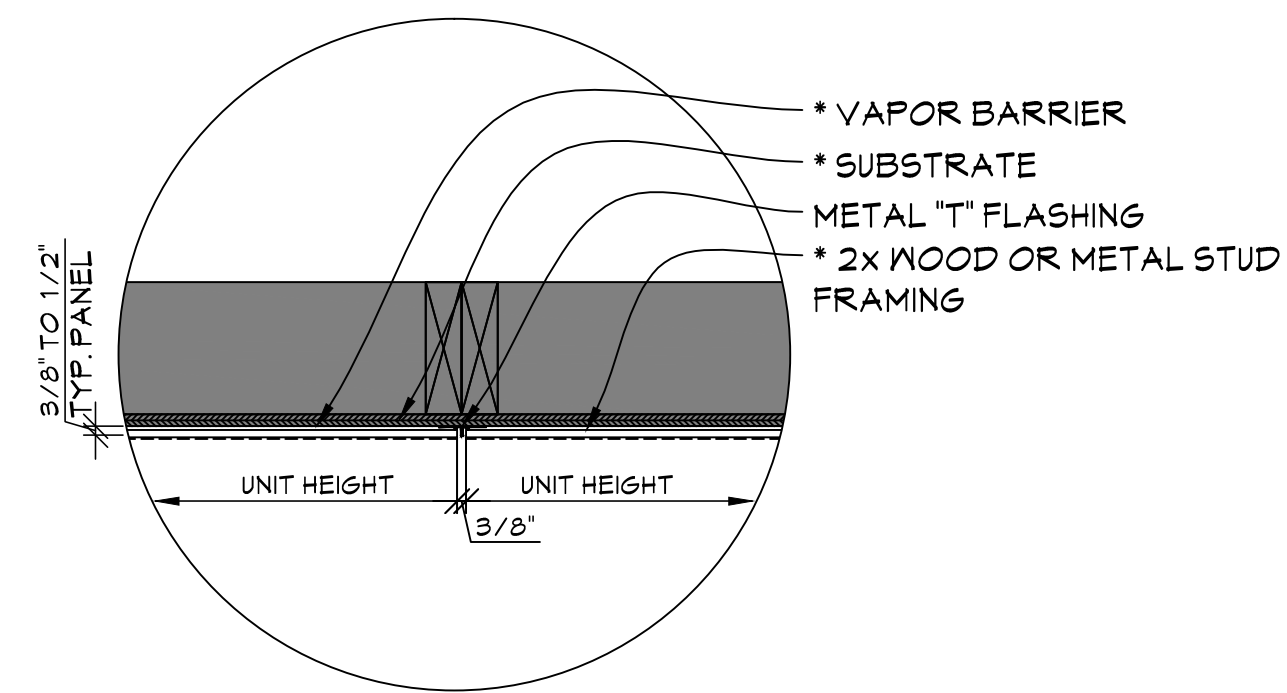
ENDURAWAL VENEER PANEL PROVIDED  
BY FFS

## ***Endurawal FFS Finish Hardcoat System***

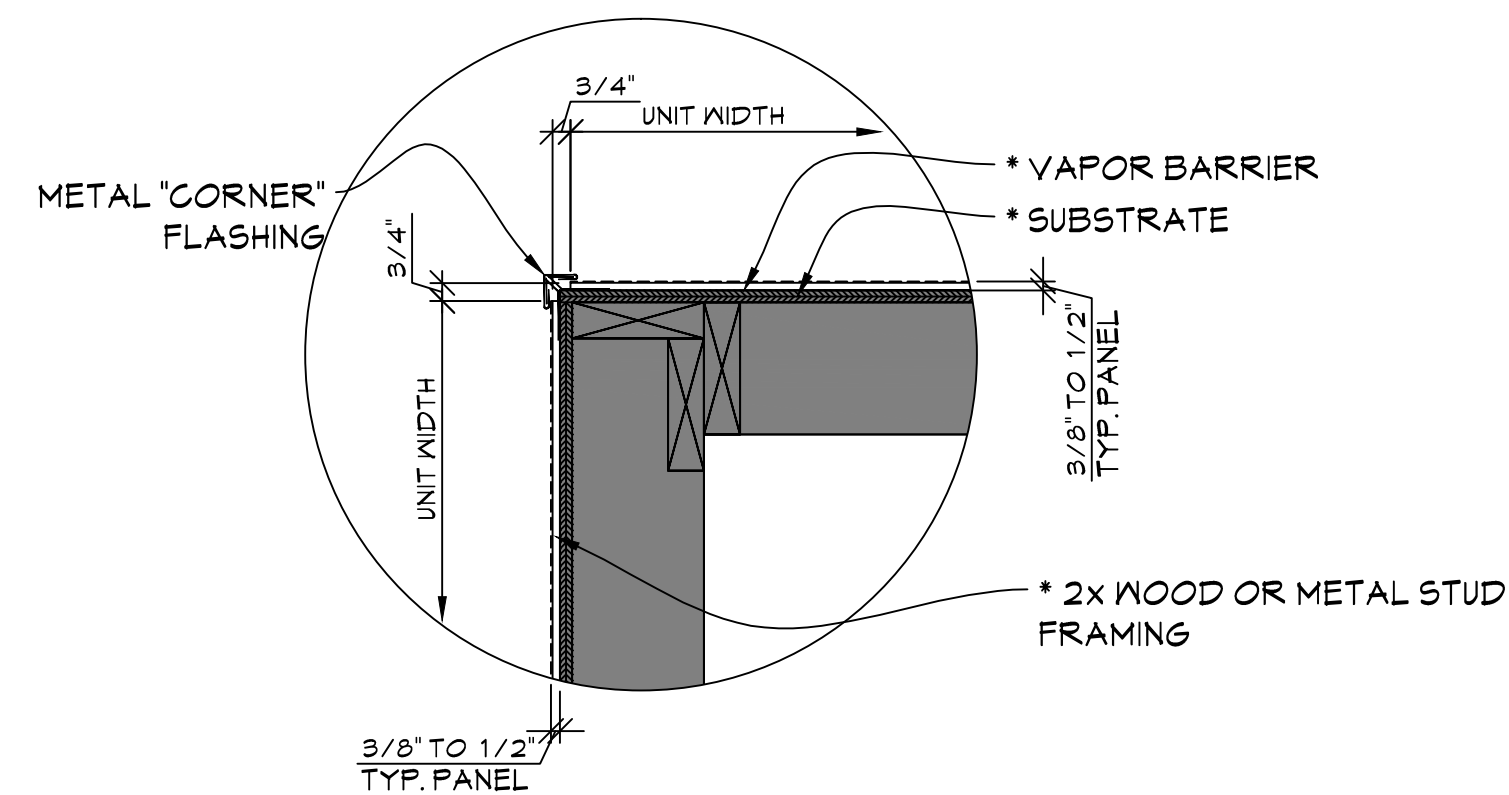
### ***System Layout***

This drawing represents a generic sample detail for illustration purposes only.  
Actual details utilized may vary due to specific project requirements.

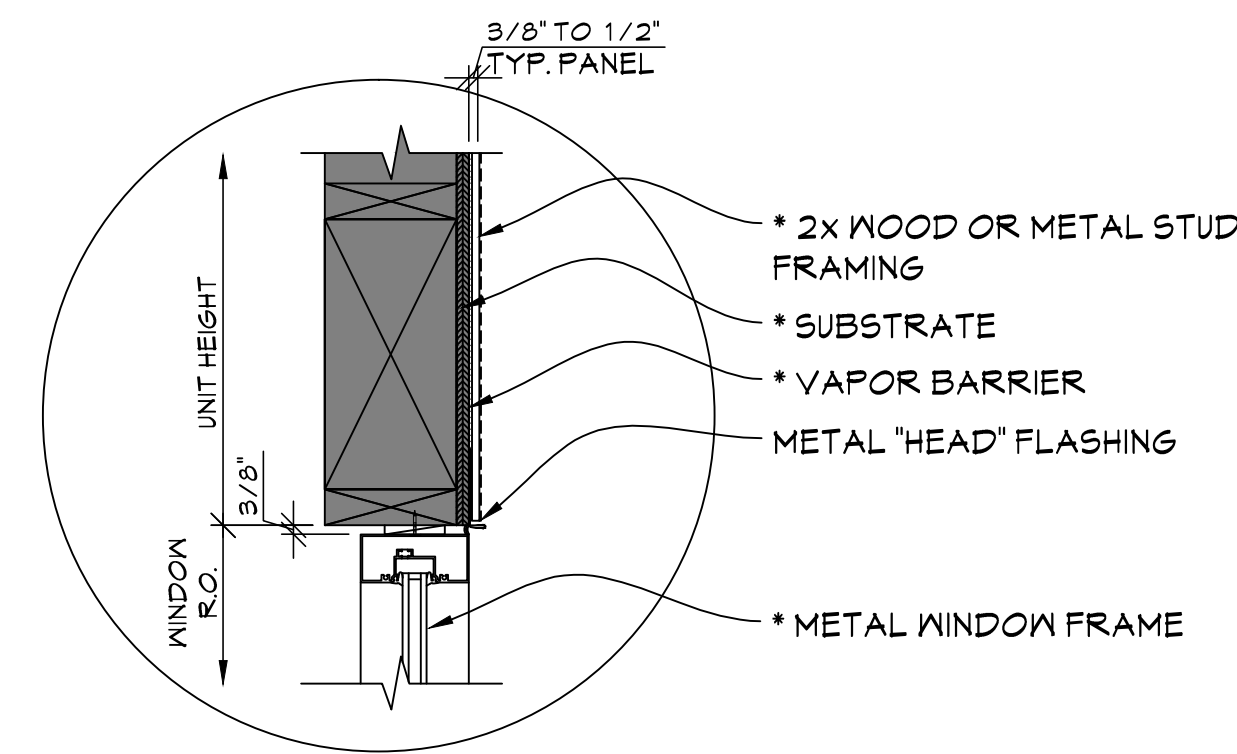




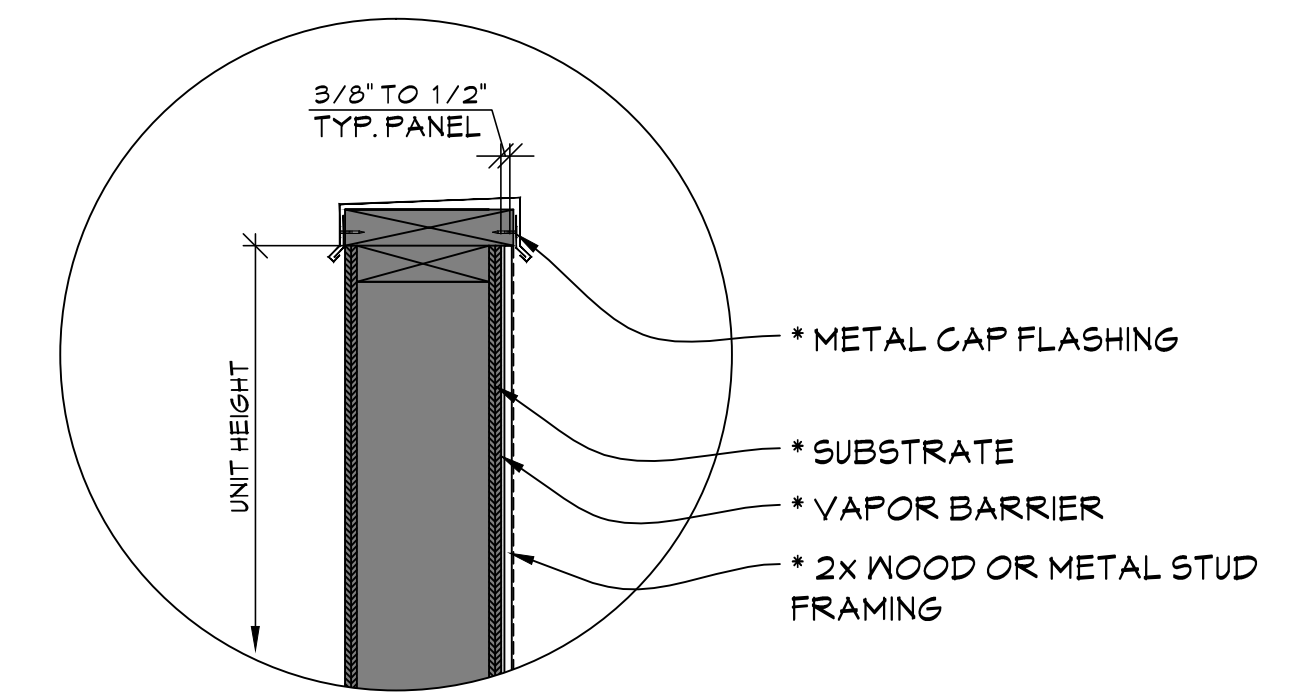
**A VERTICAL JOINT**  
SCALE 1-1/2" = 1'-0"



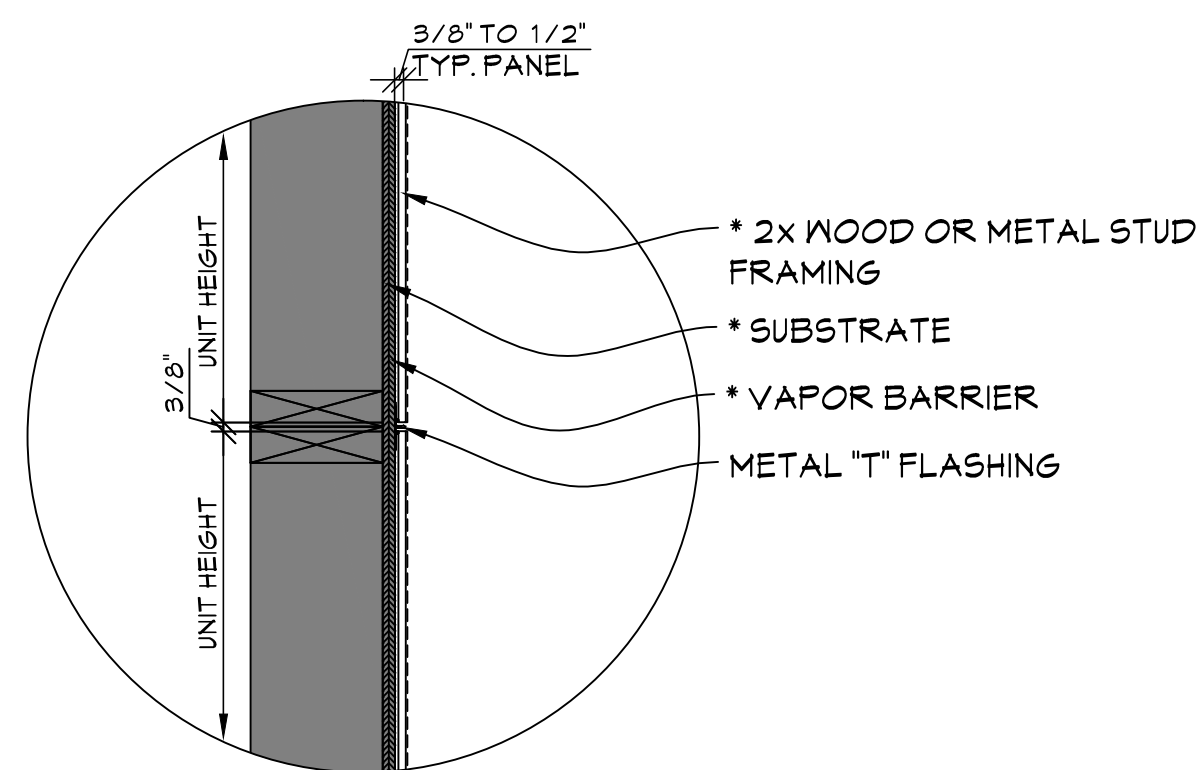
**E OUTSIDE CORNER**  
SCALE 1-1/2" = 1'-0"



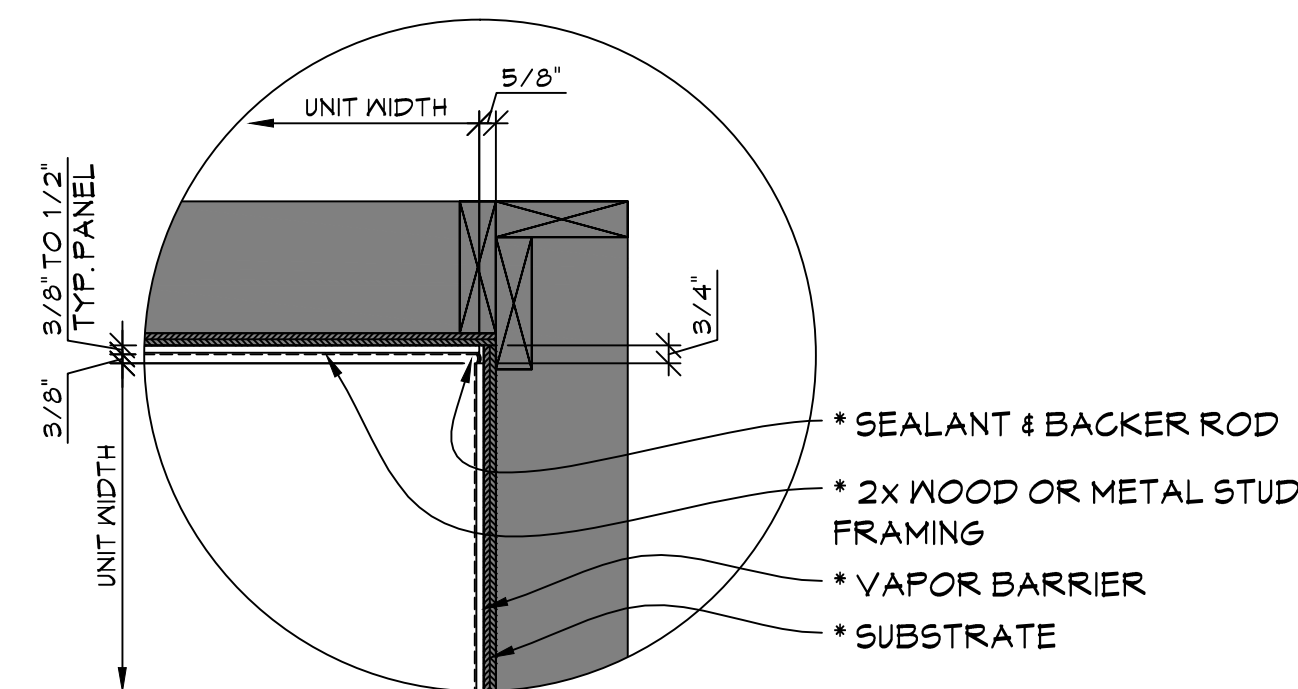
**J WINDOW HEAD**  
SCALE 1-1/2" = 1'-0"



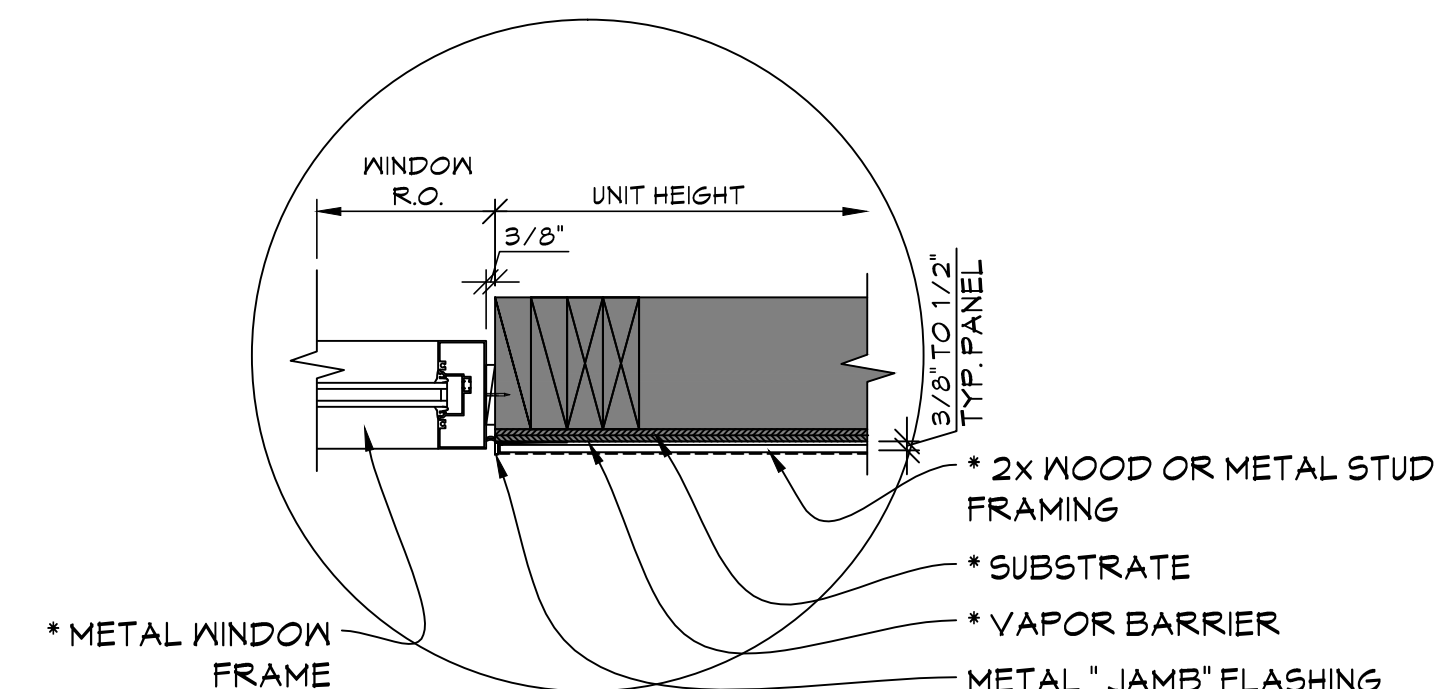
**M PARAPET OF WALL**  
SCALE 1-1/2" = 1'-0"



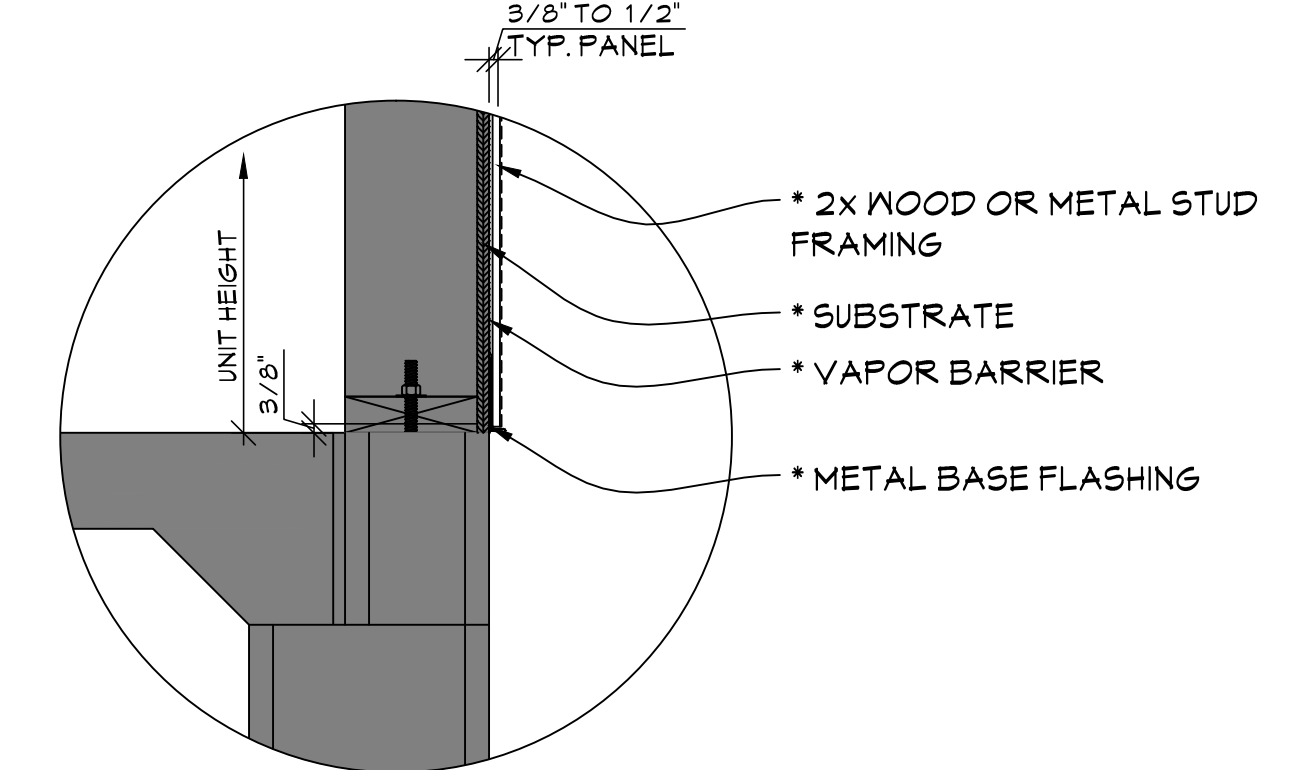
**B HORIZONTAL JOINT**  
SCALE 1-1/2" = 1'-0"



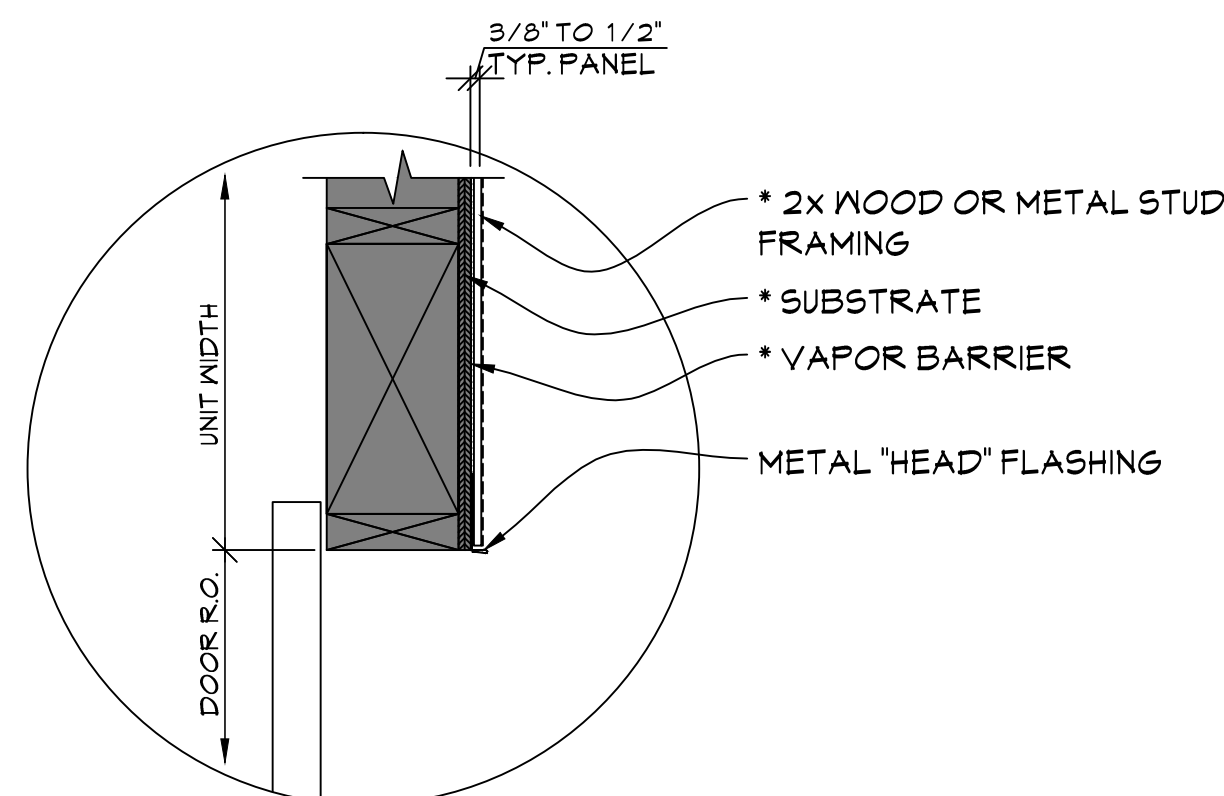
**F INSIDE CORNER**  
SCALE 1-1/2" = 1'-0"



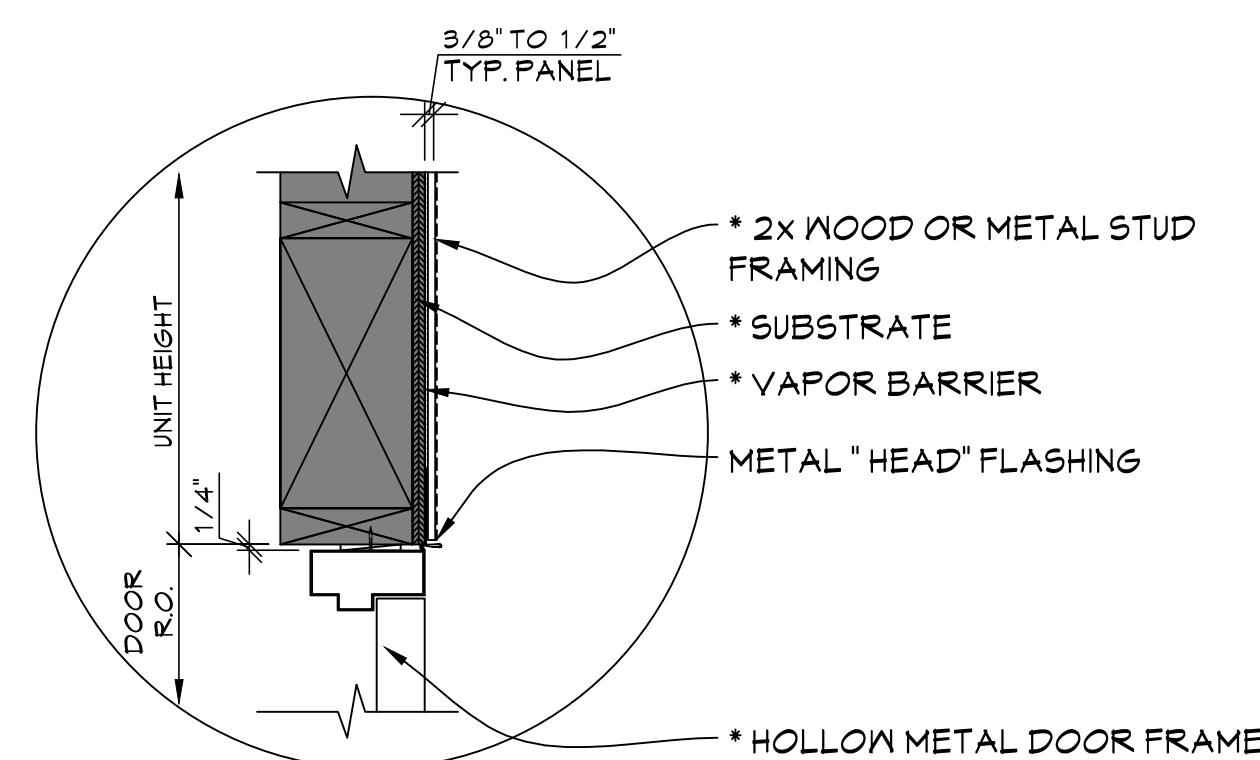
**K WINDOW JAMB**  
SCALE 1-1/2" = 1'-0"



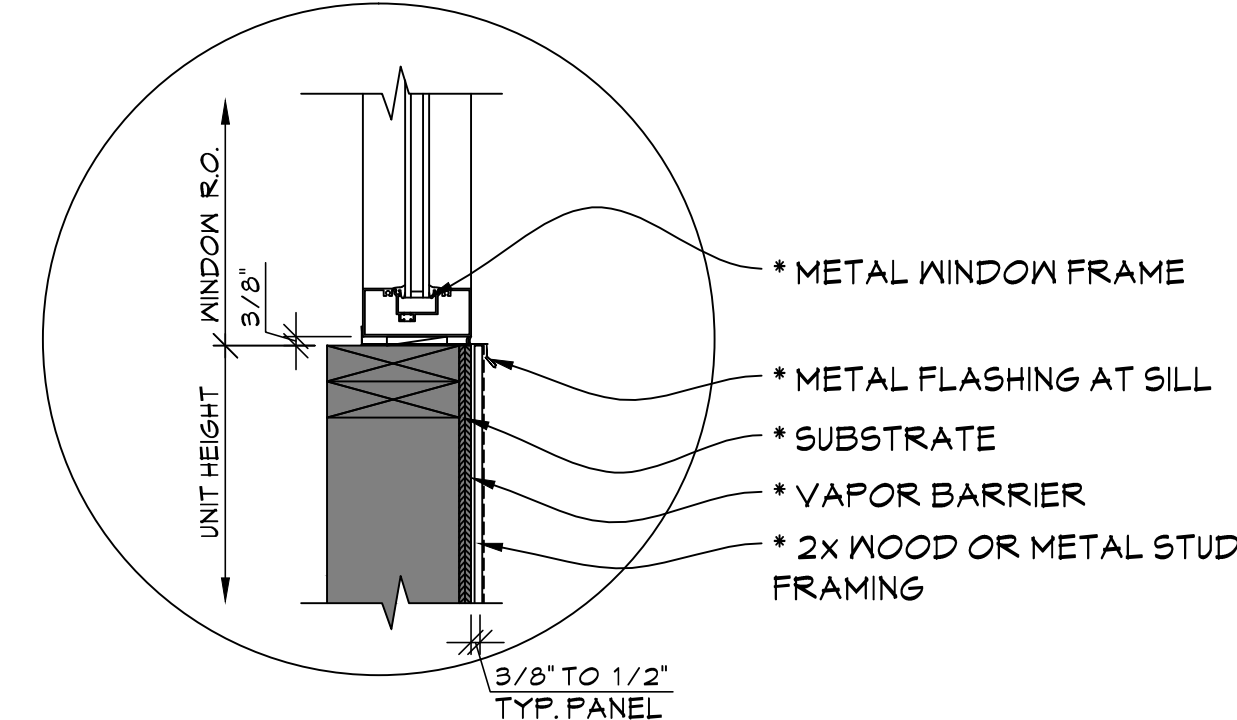
**N BASE OF WALL**  
SCALE 1-1/2" = 1'-0"



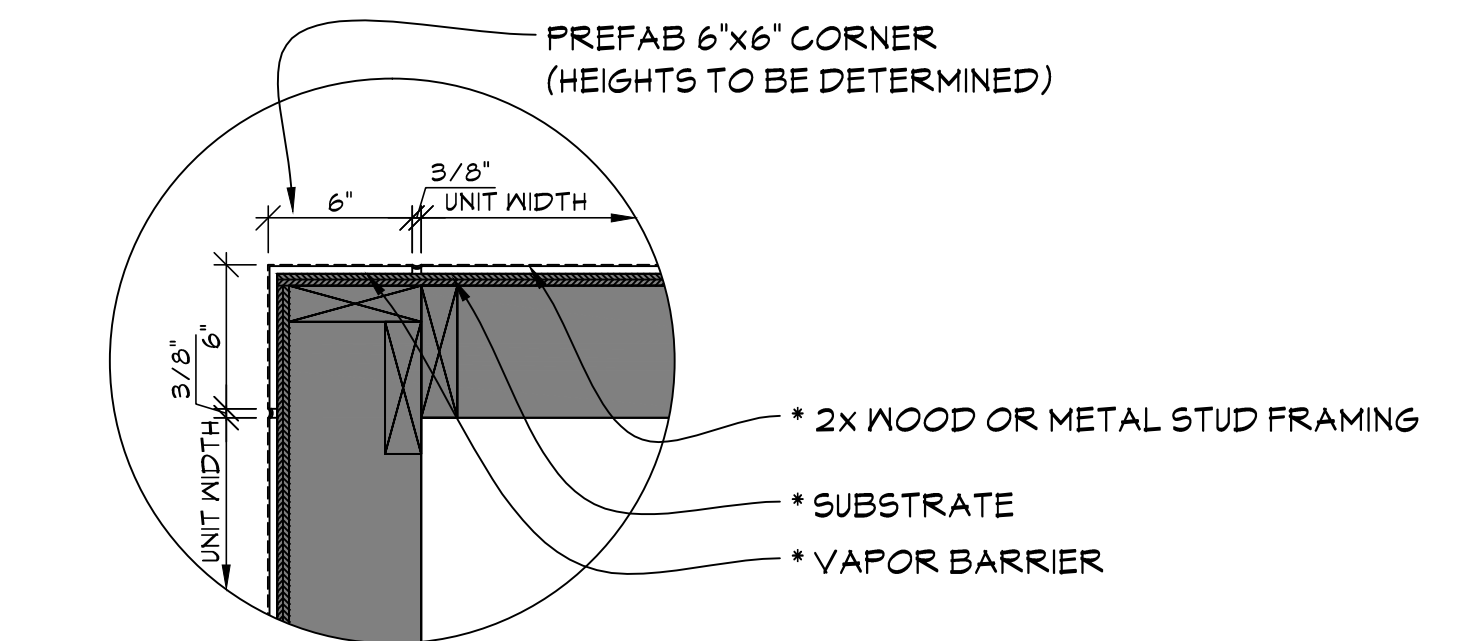
**C OVERHEAD DOOR HEAD**  
SCALE 1-1/2" = 1'-0"



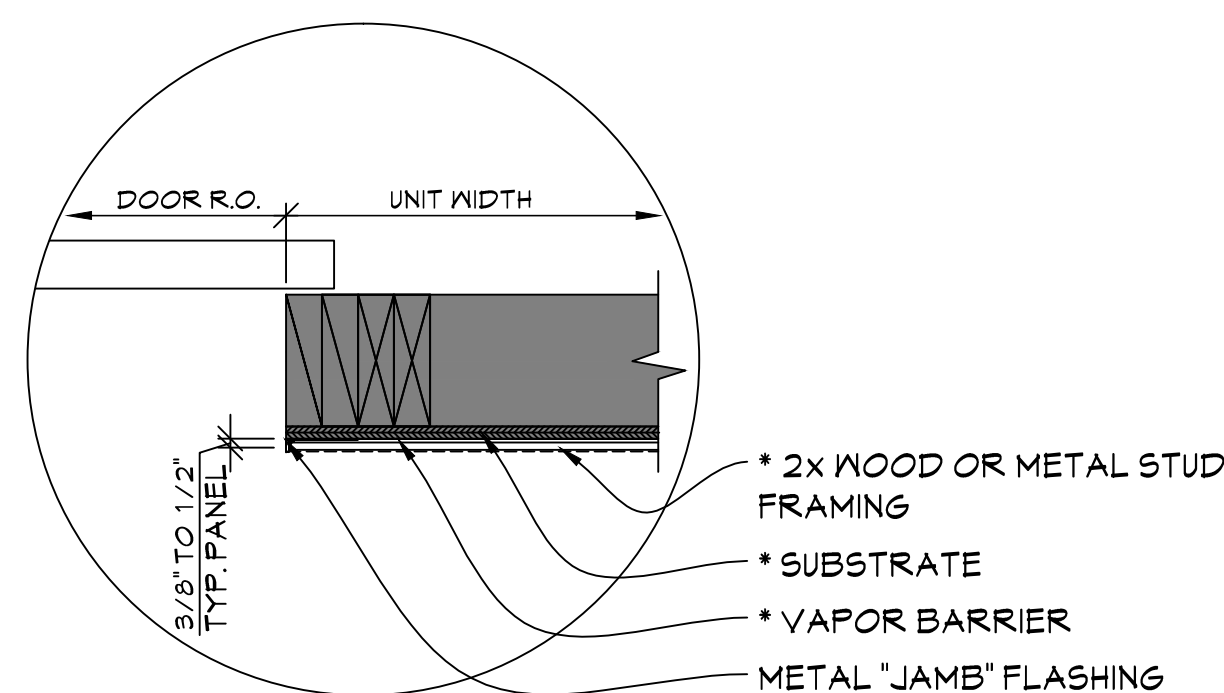
**G HOLLOW METAL DOOR HEAD**  
SCALE 1-1/2" = 1'-0"



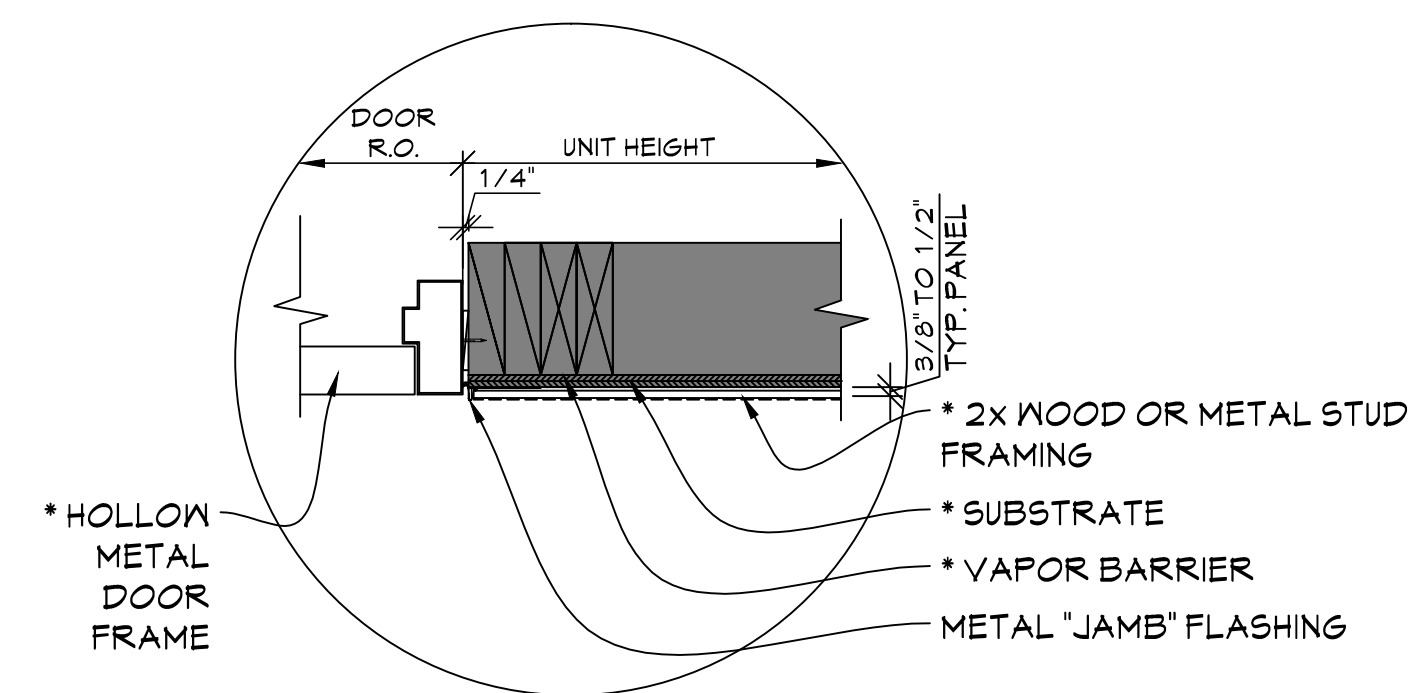
**L WINDOW SILL**  
SCALE 1-1/2" = 1'-0"



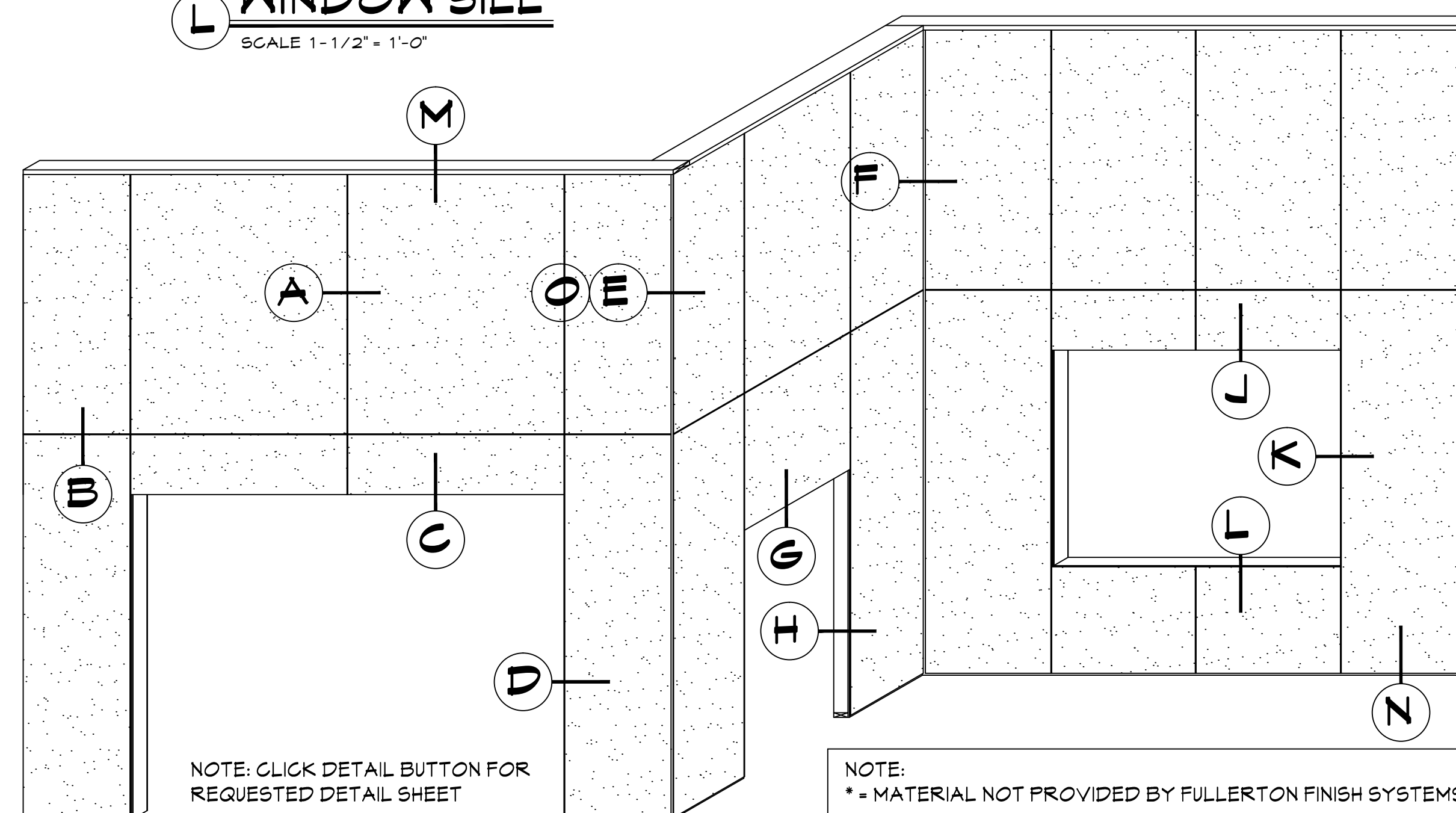
**O OPTIONAL OUTSIDE CORNER**  
SCALE 1-1/2" = 1'-0"



**D OVERHEAD DOOR JAMB**  
SCALE 1-1/2" = 1'-0"



**H HOLLOW METAL DOOR JAMB**  
SCALE 1-1/2" = 1'-0"



NOTE: CLICK DETAIL BUTTON FOR REQUESTED DETAIL SHEET

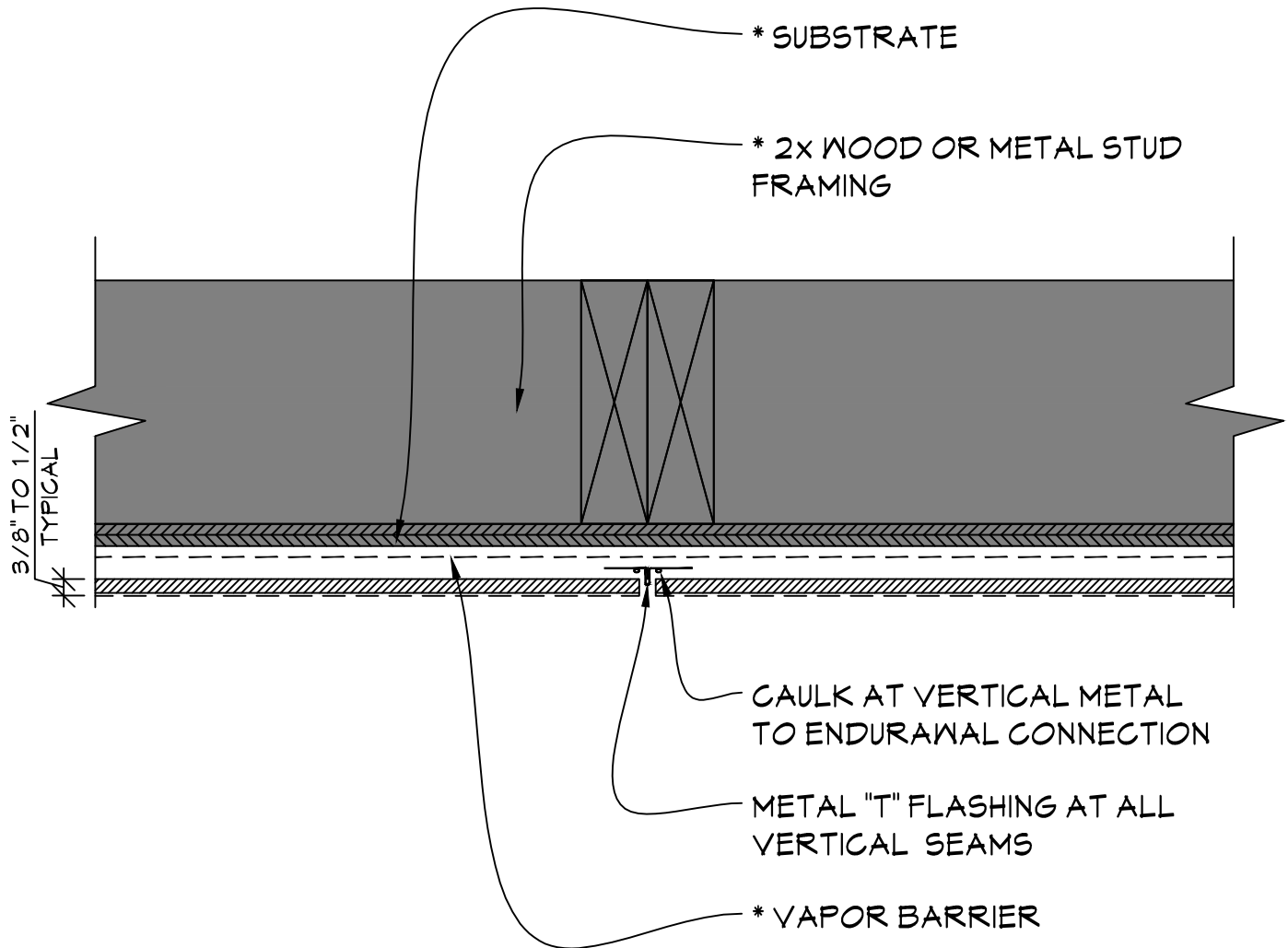
NOTE:  
\* - MATERIAL NOT PROVIDED BY FULLERTON FINISH SYSTEMS

ENDURAWAL

**FFS**  
FULLERTON  
FINISH SYSTEMS

8645 W. 21st. Street P.O. Box 609  
Sand Springs, OK. 74063  
PH (918) 246-9995

CLICK FFS LOGO TO RETURN TO MAIN PAGE



## TYPICAL VERTICAL DETAIL

SCALE: 3" = 1'-0"

NOTE:

\* = MATERIAL NOT PROVIDED BY FULLERTON FINISH SYSTEMS

# FFS

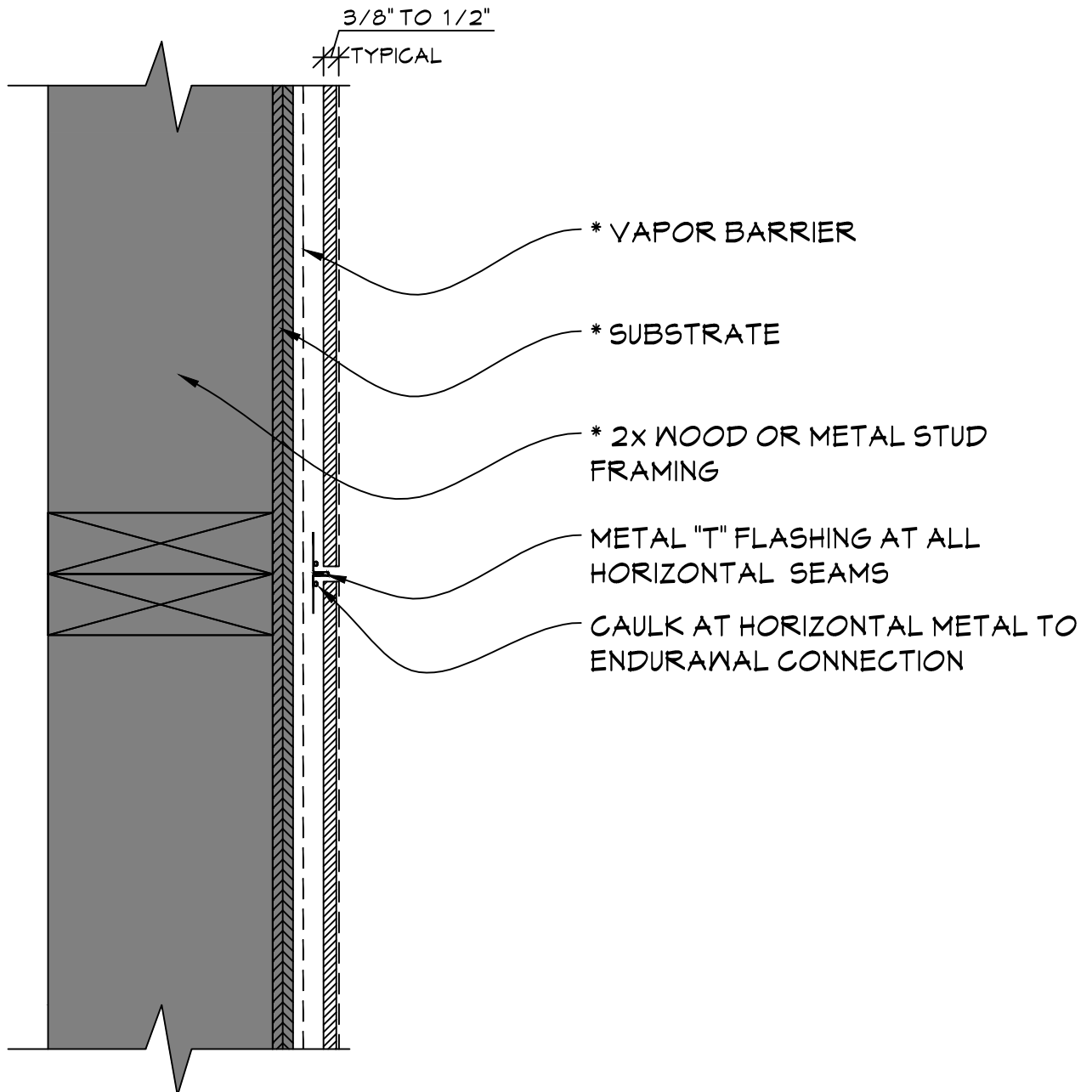
## FULLERTON

FINISH SYSTEMS

8645 W. 21st. Street P.O. Box 609  
Sand Springs, OK. 74063  
PH (918) 246-9995

CLICK FFS LOGO TO RETURN TO MAIN PAGE

# ENDURAWAL



### TYPICAL HORIZONTAL DETAIL

SCALE: 3" = 1'-0"

NOTE:

\* = MATERIAL NOT PROVIDED BY FULLERTON FINISH SYSTEMS

# FFS

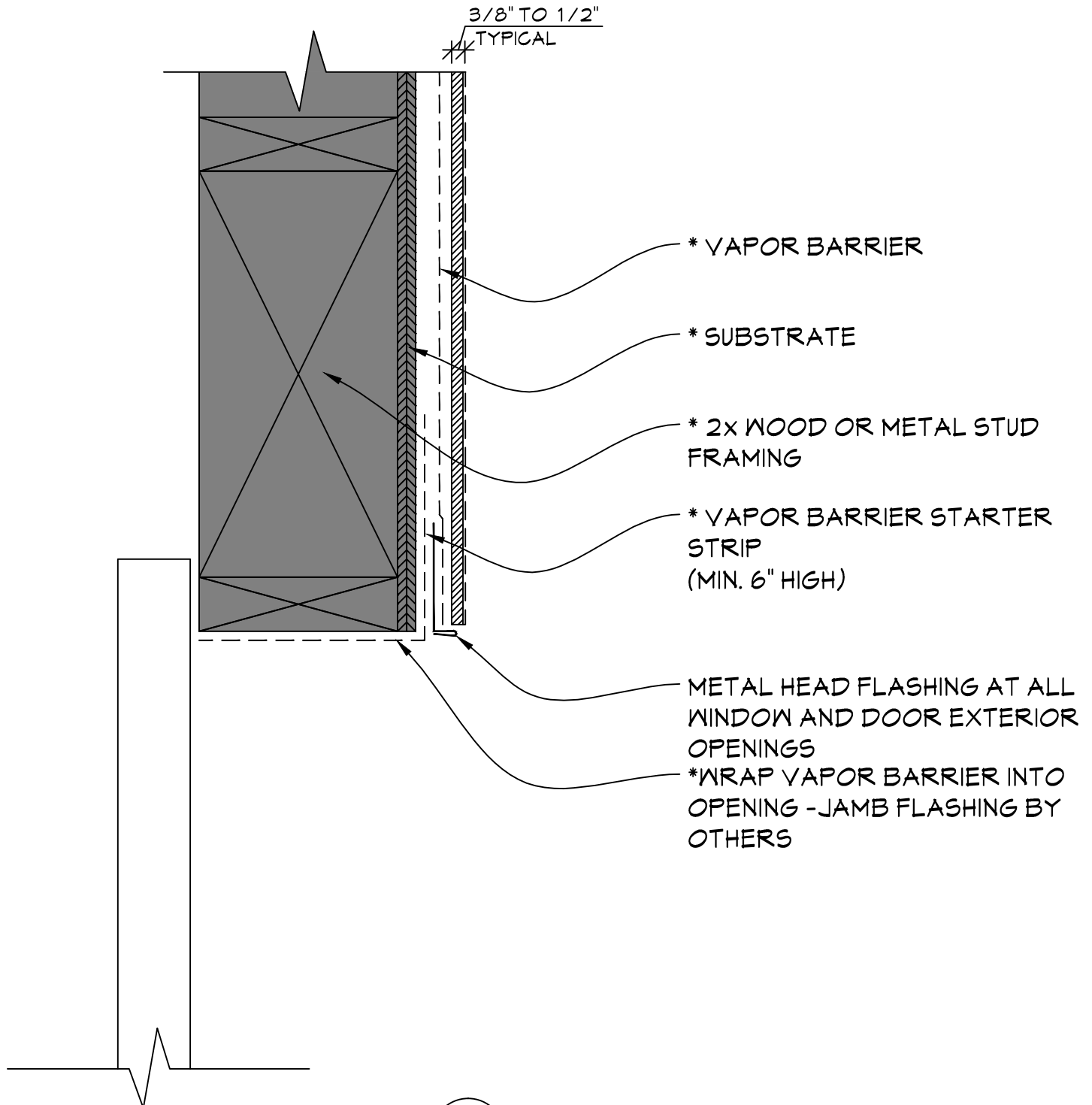
## FULLERTON

FINISH SYSTEMS

8645 W. 21st. Street P.O. Box 609  
Sand Springs, OK. 74063  
PH (918) 246-9995

CLICK FFS LOGO TO RETURN TO MAIN PAGE

# ENDURAWAL



## TYPICAL OVERHEAD DOOR DETAIL

SCALE: 3" = 1'-0"

NOTE:  
\* = MATERIAL NOT PROVIDED BY FULLERTON FINISH SYSTEMS

# FFS

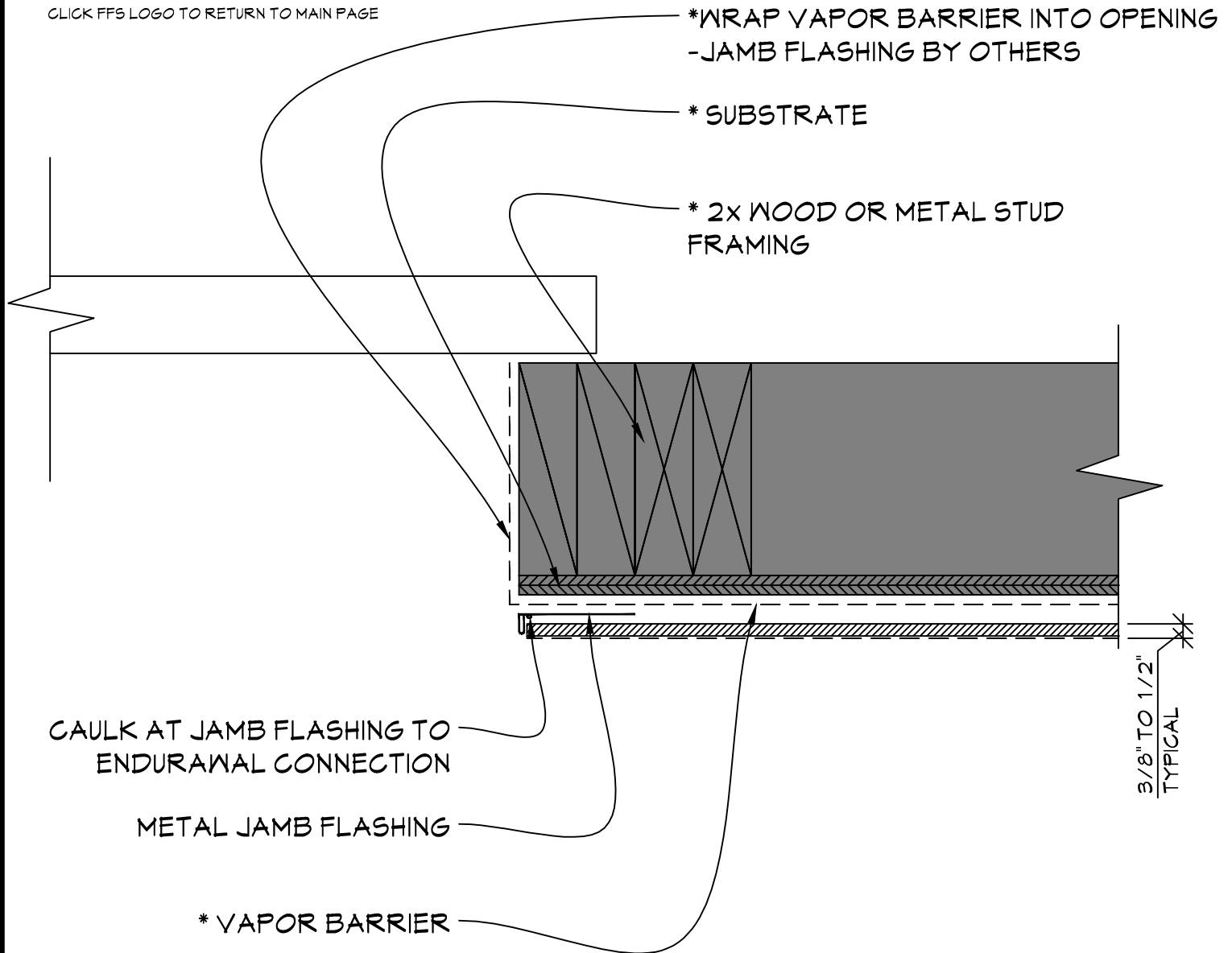
## FULLERTON

FINISH SYSTEMS

8645 W. 21st. Street P.O. Box 609  
Sand Springs, OK. 74063  
PH (918) 246-9995

CLICK FFS LOGO TO RETURN TO MAIN PAGE

# ENDURAWAL



## TYPICAL OVERHEAD DOOR JAMB DETAIL

SCALE: 3" = 1'-0"

NOTE:

\* = MATERIAL NOT PROVIDED BY FULLERTON FINISH SYSTEMS



# FFS

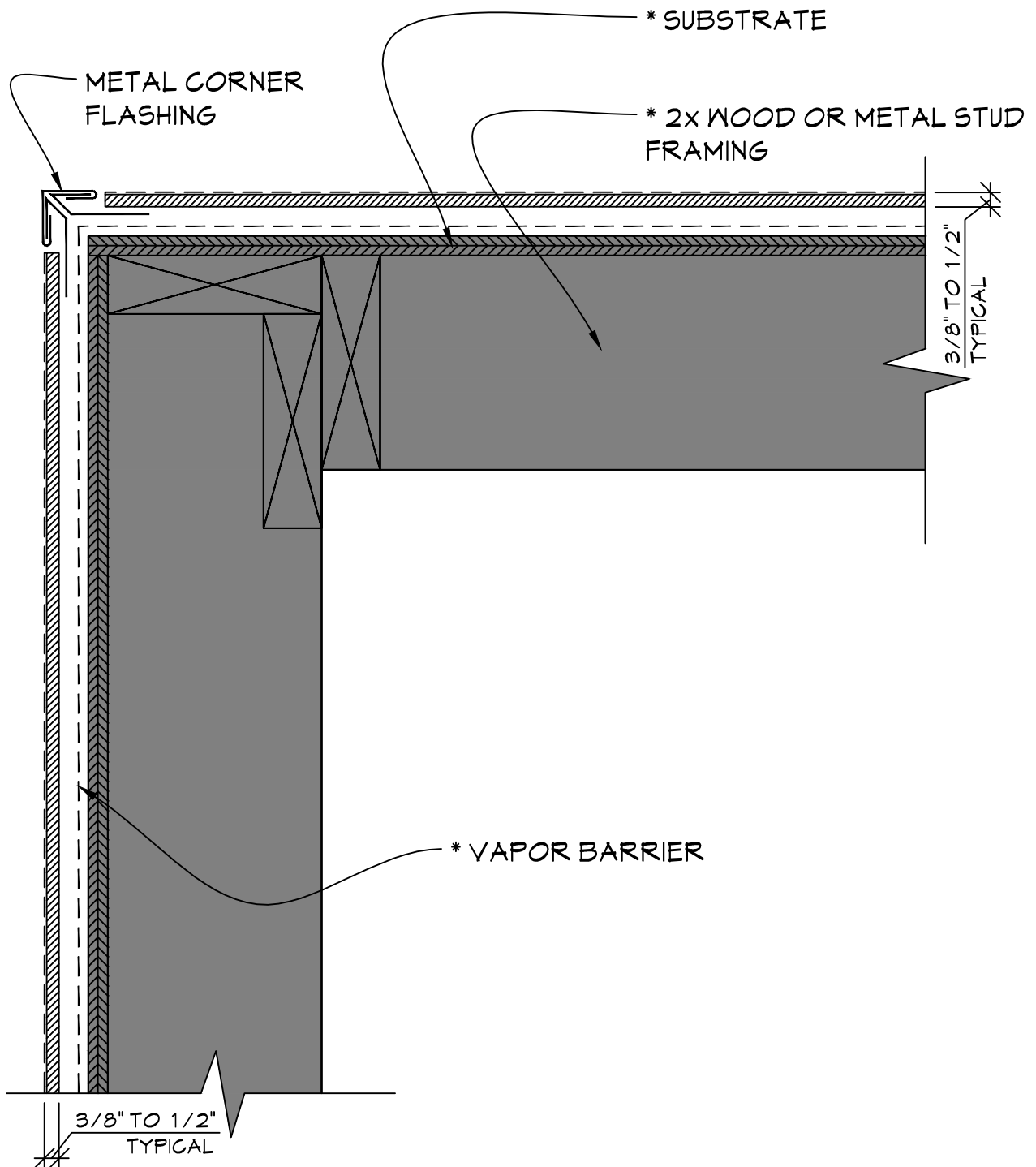
## FULLERTON

FINISH SYSTEMS

8645 W. 21st. Street P.O. Box 609  
Sand Springs, OK. 74063  
PH (918) 246-9995

CLICK FFS LOGO TO RETURN TO MAIN PAGE

# ENDURAWAL

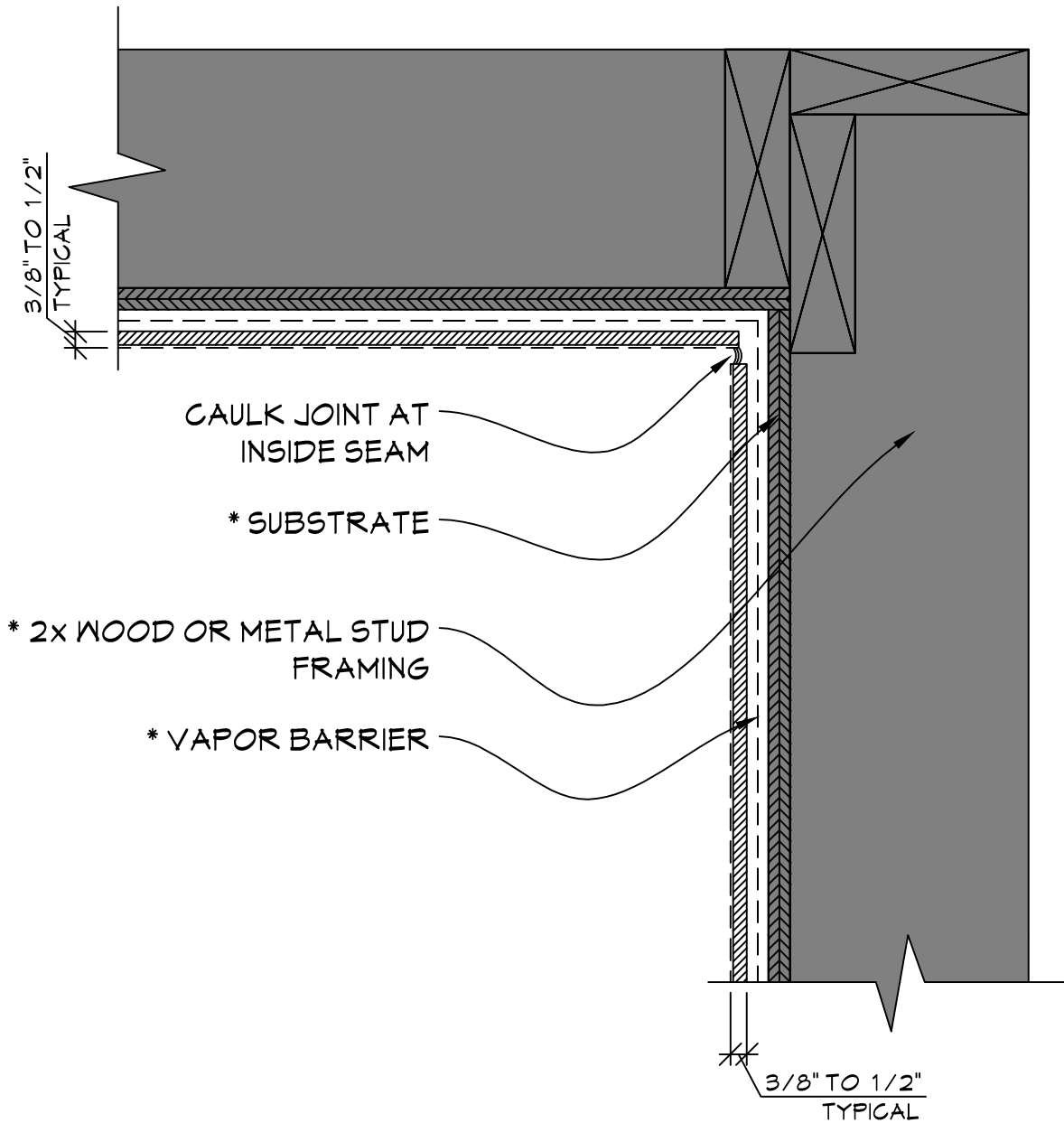


### TYPICAL OUTSIDE CORNER DETAIL

SCALE: 3" = 1'-0"

NOTE:

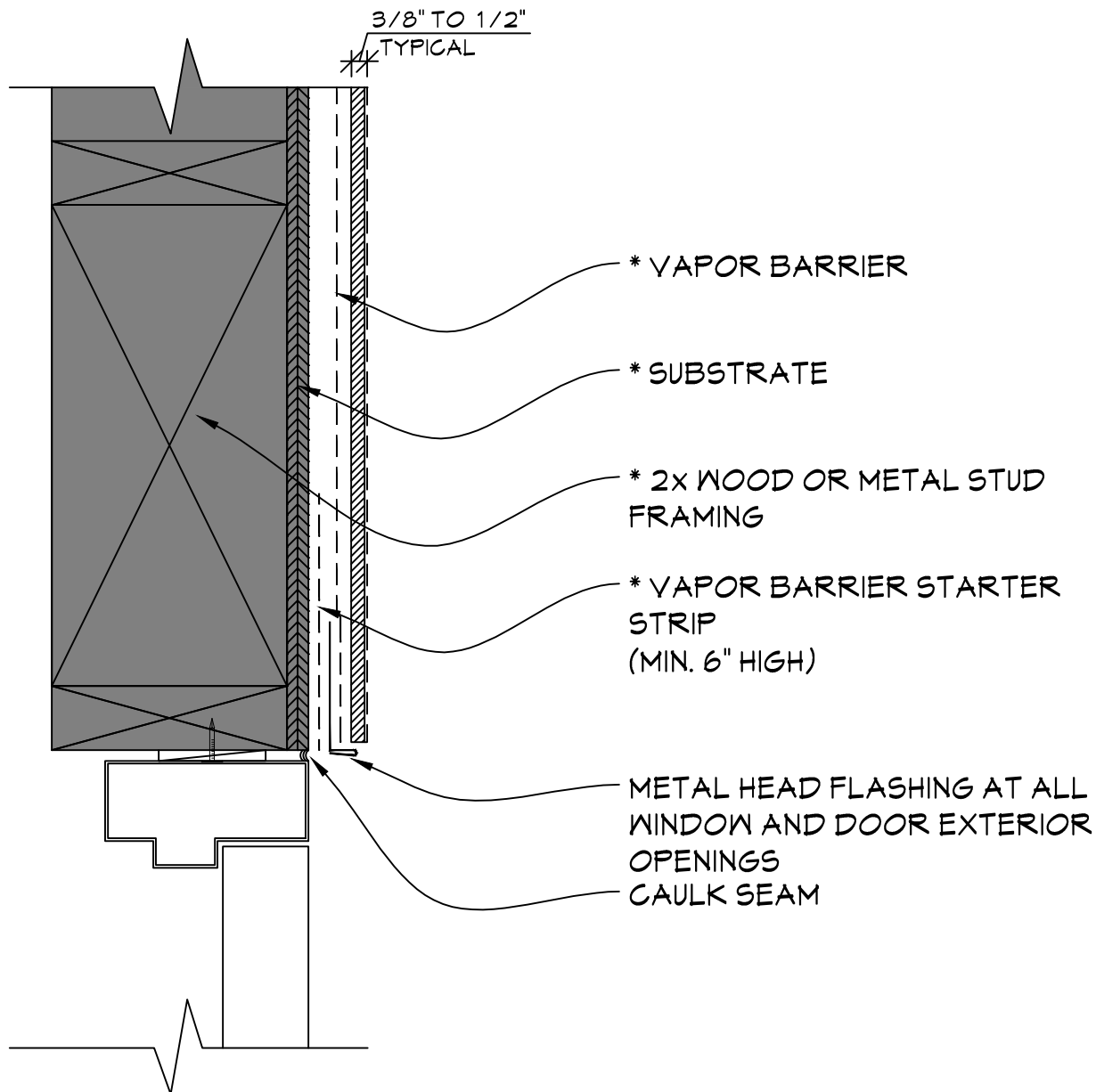
\* = MATERIAL NOT PROVIDED BY FULLERTON FINISH SYSTEMS



**TYPICAL INSIDE CORNER DETAIL**

SCALE: 3" = 1'-0"

NOTE:  
 \* = MATERIAL NOT PROVIDED BY FULLERTON FINISH SYSTEMS



## TYPICAL DOOR HEAD DETAIL

SCALE: 3" = 1'-0"

NOTE:  
 \* = MATERIAL NOT PROVIDED BY FULLERTON FINISH SYSTEMS

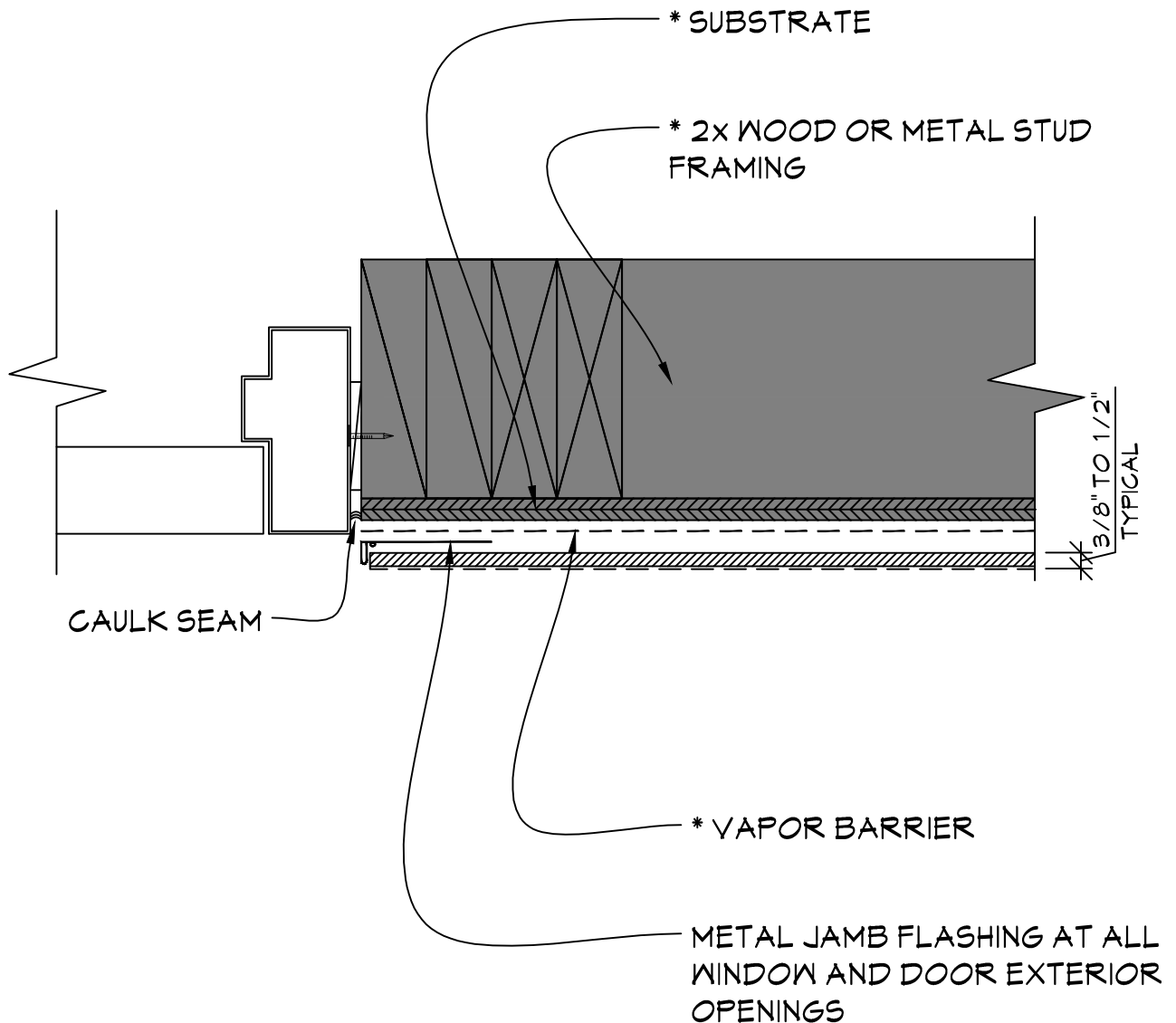


**FULLERTON**  
FINISH SYSTEMS

8645 W. 21st. Street P.O. Box 609  
Sand Springs, OK. 74063  
PH (918) 246-9995

CLICK FFS LOGO TO RETURN TO MAIN PAGE

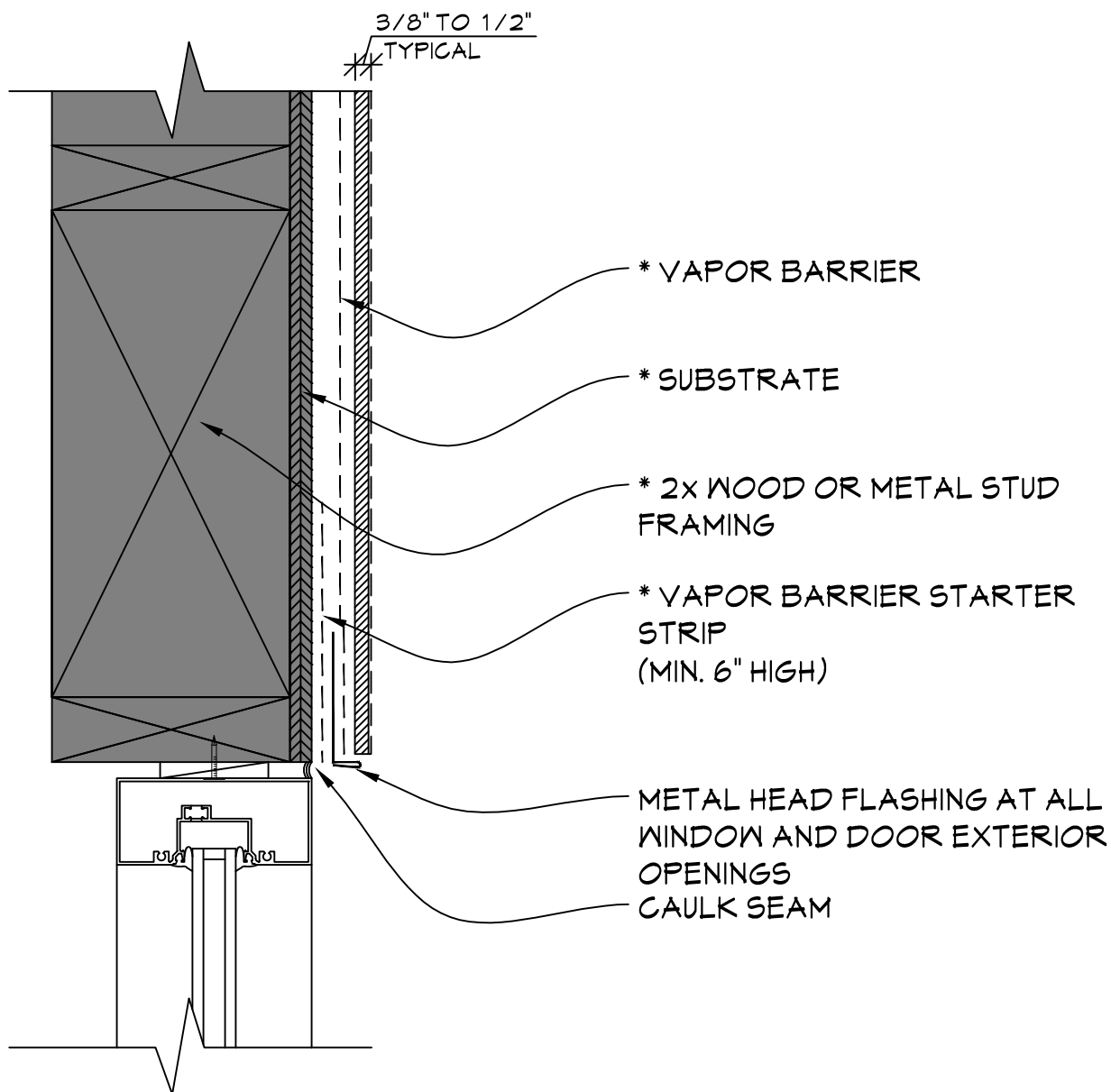
# ENDURAWAL



## TYPICAL DOOR JAMB DETAIL

SCALE: 3" = 1'-0"

NOTE:  
\* = MATERIAL NOT PROVIDED BY FULLERTON FINISH SYSTEMS

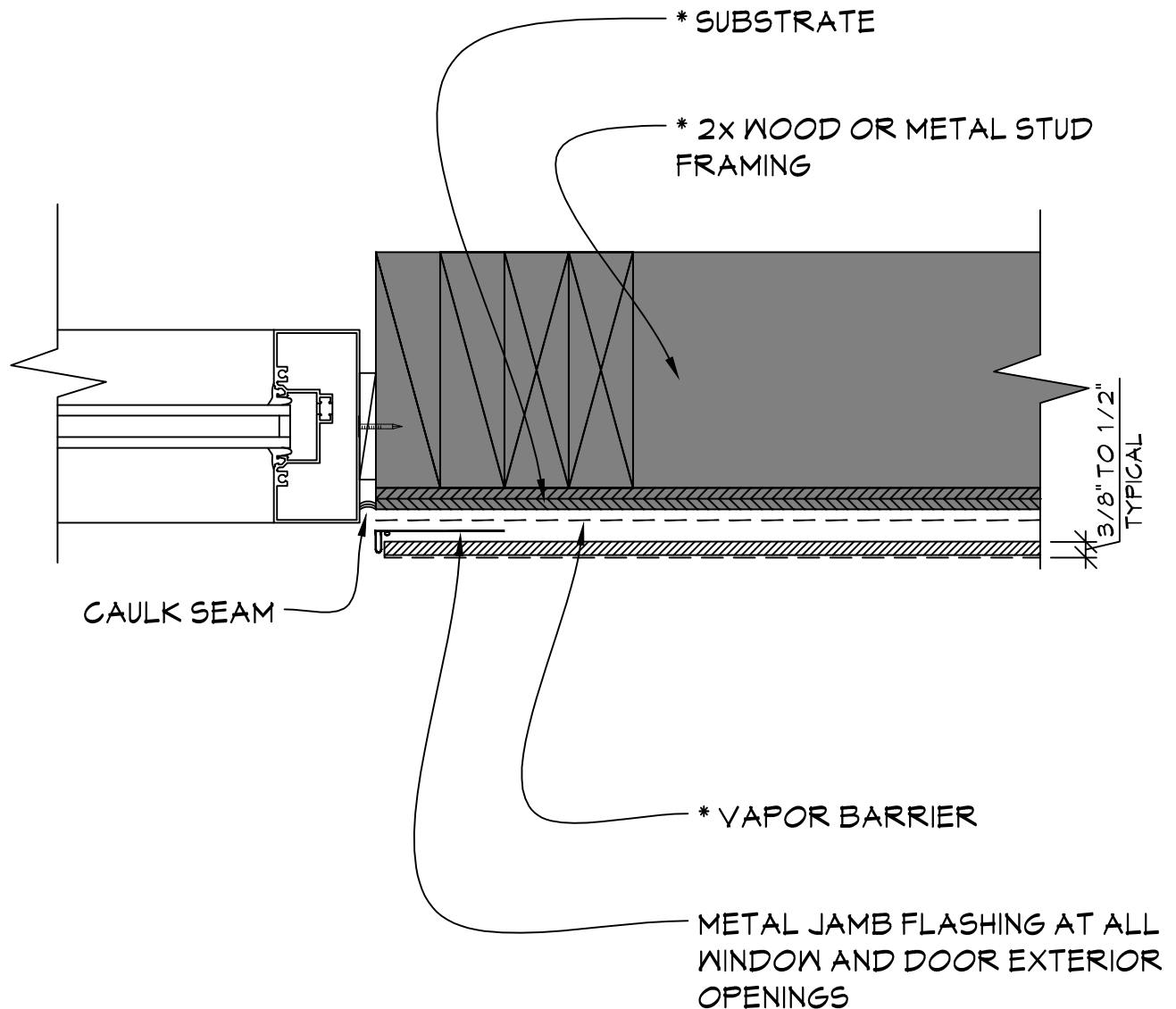


## TYPICAL WINDOW HEAD DETAIL

SCALE: 3" = 1'-0"

**NOTE:**

\* = MATERIAL NOT PROVIDED BY FULLERTON FINISH SYSTEMS



**TYPICAL WINDOW JAMB DETAIL**

SCALE: 3" = 1'-0"

NOTE:  
\* = MATERIAL NOT PROVIDED BY FULLERTON FINISH SYSTEMS



# FFS

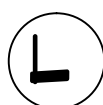
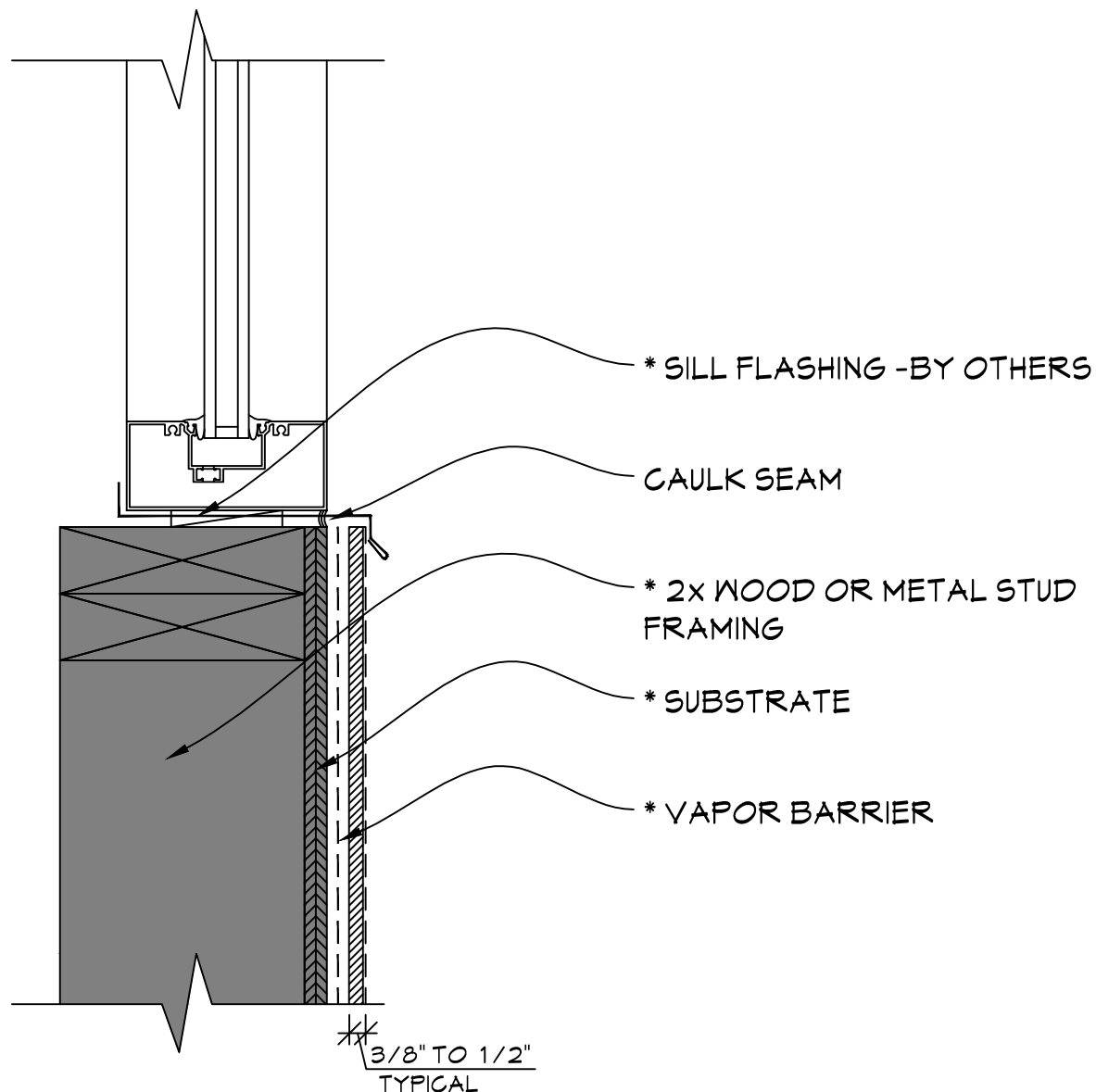
## FULLERTON

FINISH SYSTEMS

8645 W. 21st. Street P.O. Box 609  
Sand Springs, OK. 74063  
PH (918) 246-9995

CLICK FFS LOGO TO RETURN TO MAIN PAGE

# ENDURAWAL



## TYPICAL WINDOW SILL DETAIL

SCALE: 3" = 1'-0"

NOTE:  
\* = MATERIAL NOT PROVIDED BY FULLERTON FINISH SYSTEMS

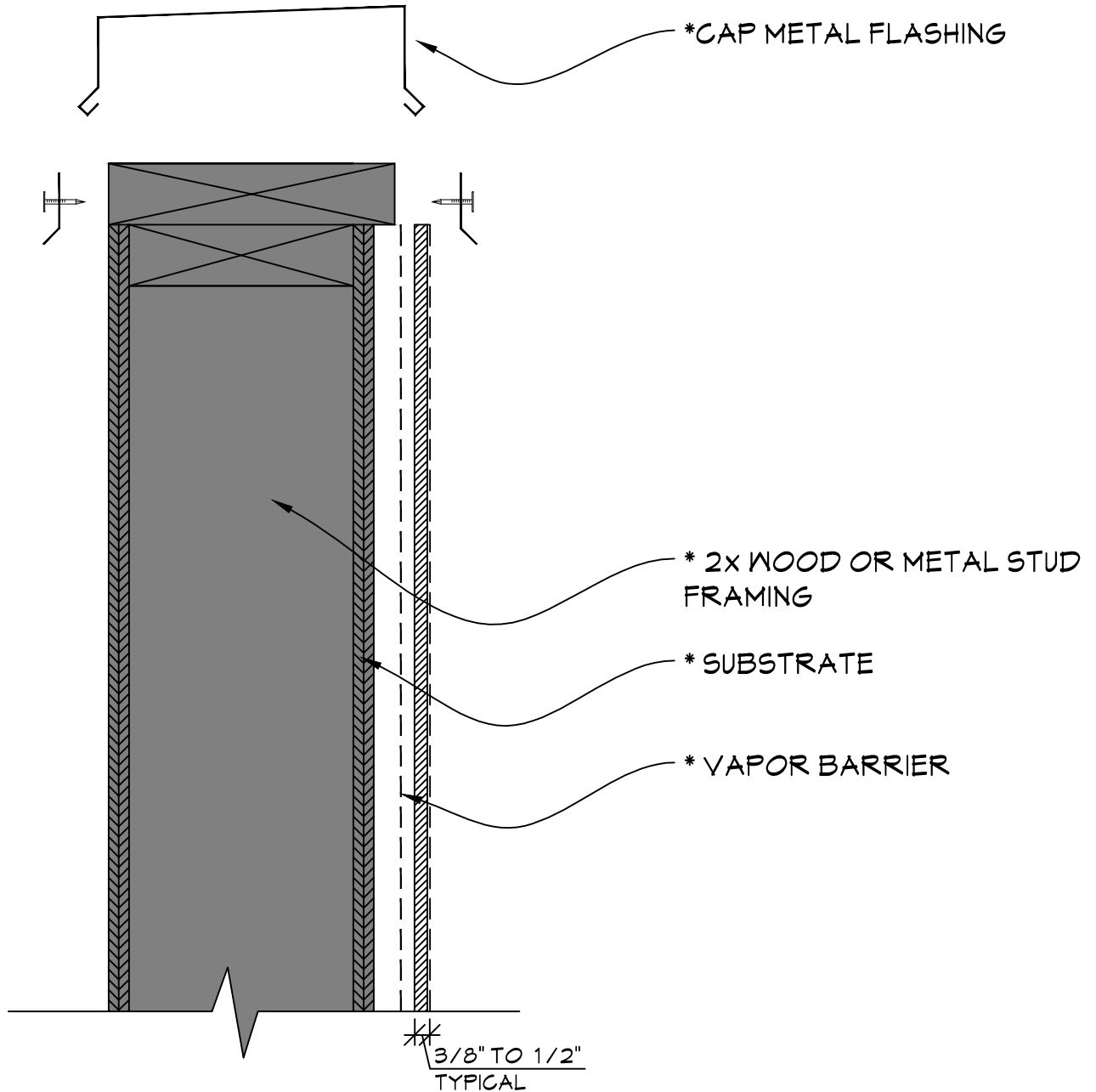


**FULLERTON**  
FINISH SYSTEMS

8645 W. 21st. Street P.O. Box 609  
Sand Springs, OK. 74063  
PH (918) 246-9995

CLICK FFS LOGO TO RETURN TO MAIN PAGE

# ENDURAWAL

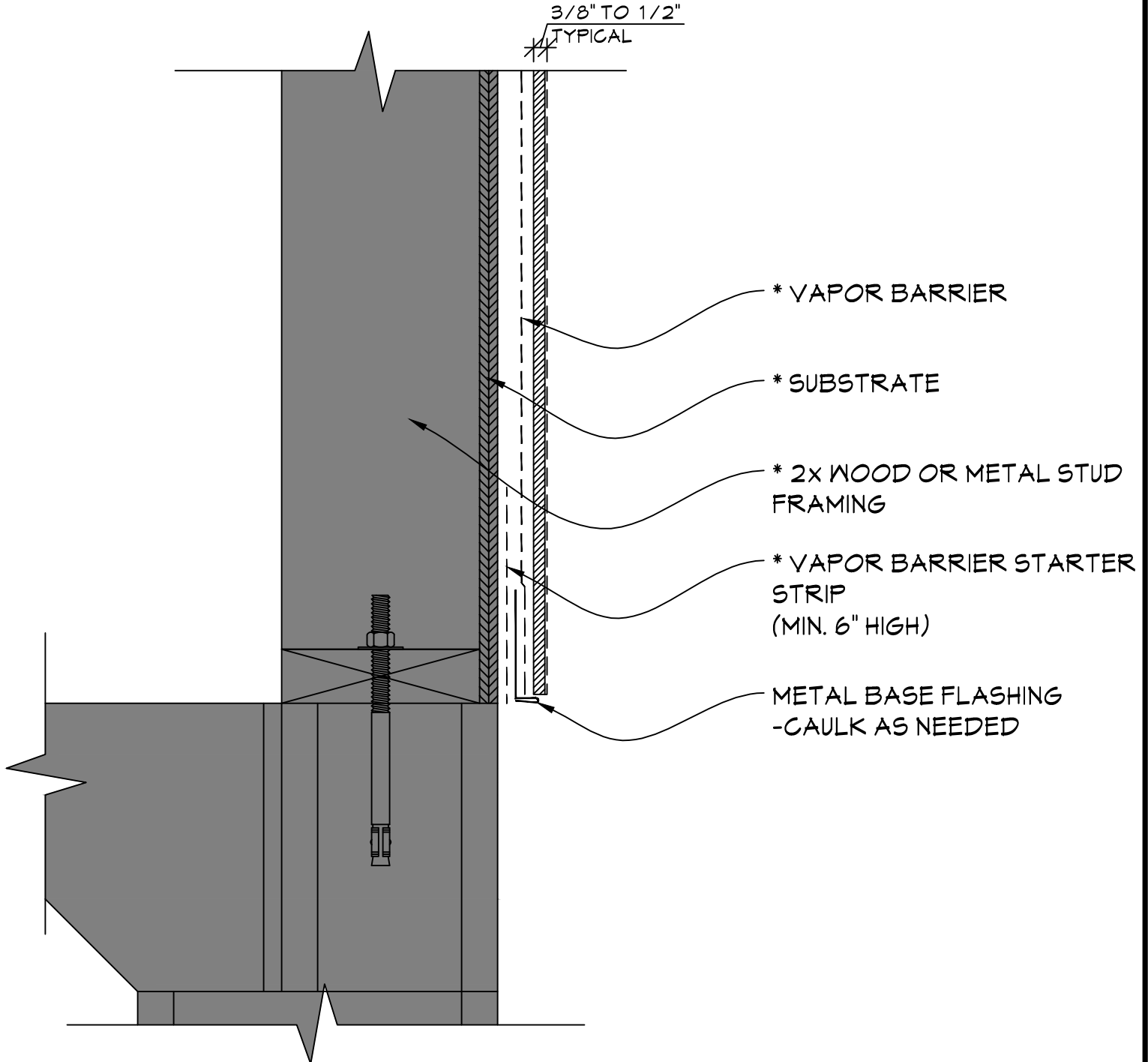


## TYPICAL PARAPET DETAIL

SCALE: 3" = 1'-0"

NOTE:

\* = MATERIAL NOT PROVIDED BY FULLERTON FINISH SYSTEMS



**TYPICAL BASE DETAIL**

SCALE: 3" = 1'-0"

NOTE:

\* = MATERIAL NOT PROVIDED BY FULLERTON FINISH SYSTEMS

# FFS

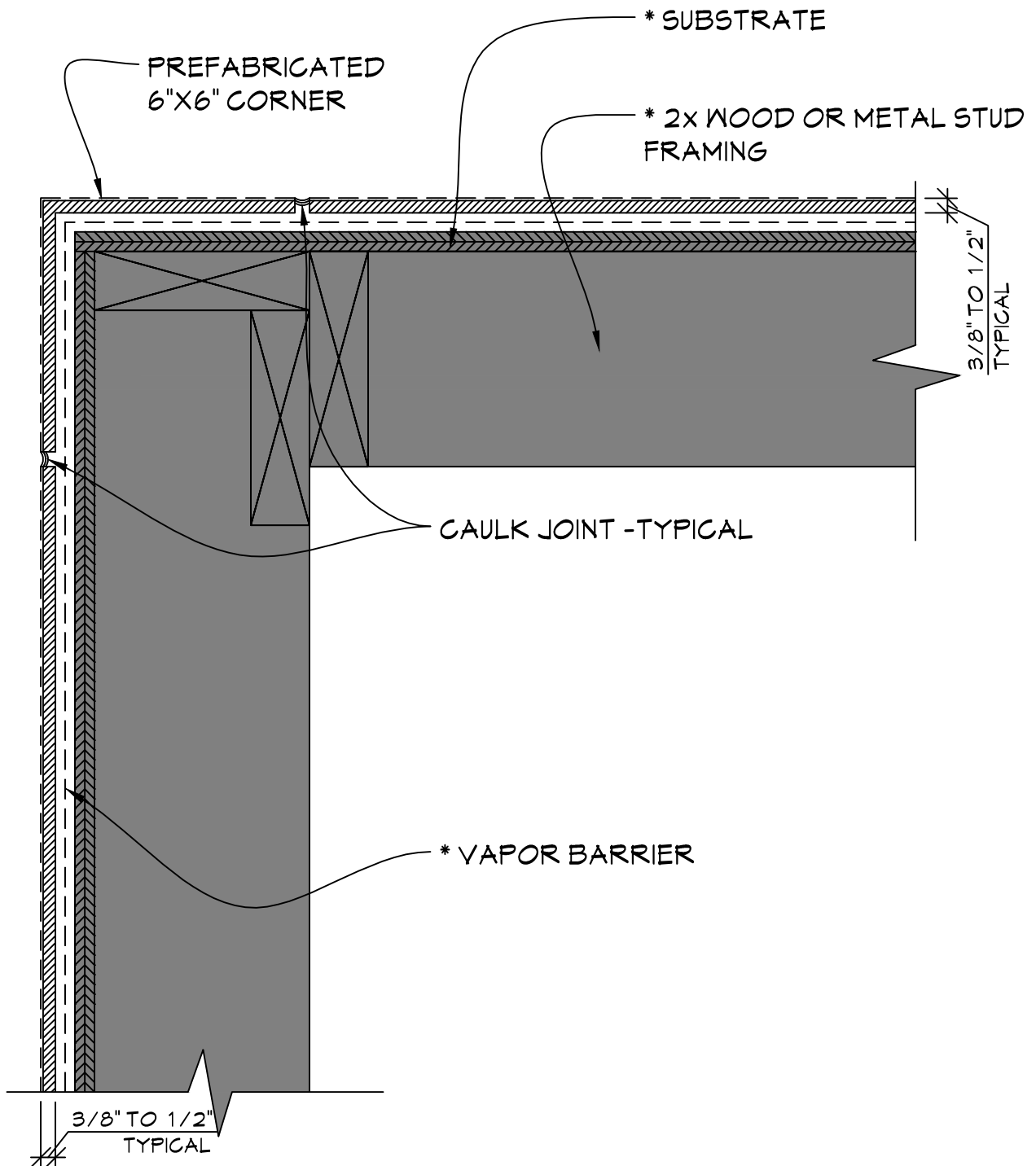
## FULLERTON

FINISH SYSTEMS

8645 W. 21st. Street P.O. Box 609  
Sand Springs, OK. 74063  
PH (918) 246-9995

CLICK FFS LOGO TO RETURN TO MAIN PAGE

# ENDURAWAL



## OPTIONAL OUTSIDE PREFAB CORNER DETAIL

SCALE: 3" = 1'-0"

NOTE:

\* = MATERIAL NOT PROVIDED BY FULLERTON FINISH SYSTEMS