

CastWal™

From Fullerton Finish Systems, Inc.



Masonry Benefit Without The Masonry Hassles.

CastWal™ is a beautiful and durable molded product of polymer modified cement. It is available in a split-face block pattern. Tough, impact-resistant and totally water-resistant, CastWal™ requires no costly re-sealing or moisture-proofing. Our special formulation eliminates efflorescence and there is no mortar to fail. With factory-finished CastWal™ products, you can always count on consistent, top-to-bottom, wall-to-wall quality.

The Fullerton Finish Systems Advantage...

- No costly footings, foundations or special supports
- Eliminates all but a fraction of the weight of old-fashioned masonry
- Thinner exterior walls means more useable space for the building interior
- Tough, impact-resistant and totally water-resistant - requires no costly re-sealing or moisture-proofing
- Through body color in white, tan or grey
- Our special formulation eliminates efflorescence - and no mortar to fail
- Consistent top-to-bottom wall-to-wall quality
- Easy and quick installation by your crew - quicker project completion
- Available in several patterns and textures
- No specialist subcontractors are required
- Factory finished in a color of your choice
- 5-Year warranty

Easy, Fast-Track Construction in Any Weather.

CastWal™ installation is easily handled by your regular construction crew, using standard construction methods. Best of all CastWal installation is fast - and weatherproof. While cold, snow or rain all too often call a halt to old-fashioned masonry, CastWal can be installed in almost any weather, and in a fraction of the time. CastWal is perfect for new construction and retrofit projects.

The Fullerton Finish Systems Advantage...

Styles And Colors For Any Design.

Choose from four standard CastWal™ patterns. This product is available in 4'x8' sheets and is easily installed without masonry. Re-clad your existing locations for a cleaner & updated look.



Block-Cast Sand Finish
Attractive 8" x 8"
split-face block pattern.



Block-Cast Paintable
Attractive 8" x 16"
split-face block pattern.



Brick-Cast
Impressive 8' wide units capturing
the beauty of brick in a running-
bond pattern.



Rib-Cast
Fluted-rib panels, in
three styles



The Quality Solution for New & Remodel Exterior Finishing

PO Box 609, Sand Springs, OK 74063 • Phone 918.246.9995 • Toll Free 866.915.9995 • Fax 918.246.9976
www.fullertonfinishsystems.com

CastWal™

From Fullerton Finish Systems, Inc.

Veneer Panel Specification

Part 1 - General

1.1 Description

A. Work described herein consists of furnishing factory fabricated polymer reinforced cement panels with an exterior face of textured 8"x 8" stacked block as manufactured in Sand Springs, Oklahoma by Fullerton Finish Systems, Inc. - (918) 246-9995

B. Manufacturer shall have been continuously engaged in the manufacture of exterior wall panels for 35 or more years.

1.2 Warranty - Manufacturer to warranty from date of purchase against defective materials or workmanship in fabrication for a period of five years.

Part 2 - Products

2.1 Description

- A. Block-Cast panels shall be _____ (Color) per approved sample.
- B. Inorganic fillers shall meet requirements of Federal Specification TTP-P-403A.
- C. Block-Cast panels shall meet the following specifications:

Nominal Thickness

1" at block and 9/16" at joint.

Dimensional Tolerances

Length and Width	+1/8"
Thickness (at block)	+5/16"
Thickness (at joint)	+1/8"

Flexural Strength (with finished face up) 1,000 psi.

Flame Spread Index (ASTM E-84) 0

Smoke Developed Index (ASTM E-84) 40

Coefficient of Thermal Expansion

(ASTM D-696) 5.14 x 10⁻⁶

D. Product samples and shop drawings, if required, shall be submitted for approval before panel fabrication.

2.2 Performance

A. Block-Cast panel shall withstand the following tests without noted change in appearance or material failure:

500 hours of carbon arc exposure
(ASTM method G23)

B. All testing shall have been performed by an independent testing facility.

Part 3 - Execution

3.1 Erection

- A. Panels shall be erected plumb and true by qualified workmen.
- B. Panels shall be aligned and spaced as shown on manufacturer's shop drawings, if required.
- C. Panels shall be handled and attached to building structure as per manufacturer's shop drawings, if required, installation procedure and/or architectural drawings.
- D. All horizontal or vertical panel joints shall be filled with sealant over backer rod.

E. Accessories

1. Sealant (Equal to Sashco Big Stretch) shall be applied in accordance with sealant manufacturer's recommendations.
2. Backer rod (polyethylene foam rod) shall be proper size for joint. Backer rod shall be installed before sealant
3. Fasteners shall be phillips bugle head or trim head self-drilling zinc and clear chromate-plated for rust resistance. Fasteners to be covered with cover material provided.
4. All the accessories shall be of size, shape and spacing as shown on manufacturer's shop drawings, if required, and/or listed in manufacturer's Installation Guide.

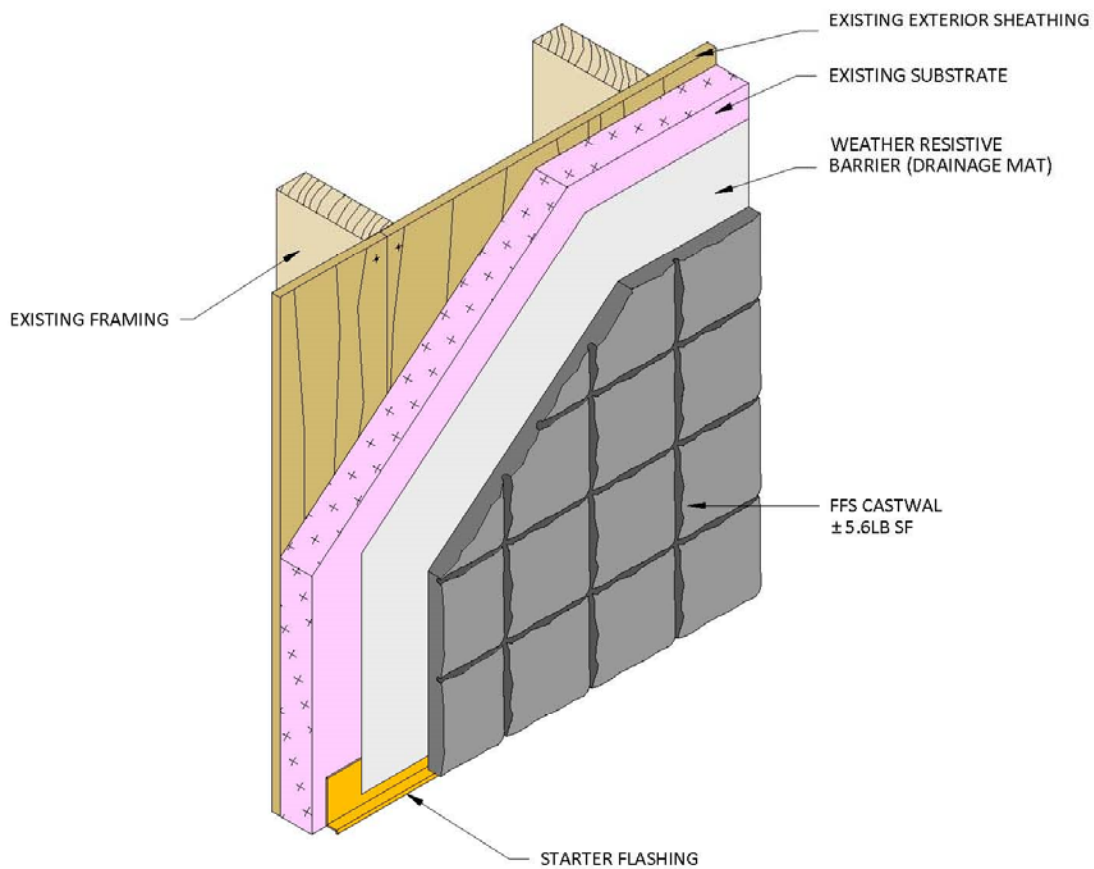


The Quality Solution for New & Remodel Exterior Finishing

PO Box 609, Sand Springs, OK 74063 • Phone 918.246.9995 • Toll Free 866.915.9995 • Fax 918.246.9976
www.fullertonfinishsystems.com

SAMPLE DETAIL

(Renovation)



CASTWAL VENEER PANEL PROVIDED BY
FFS

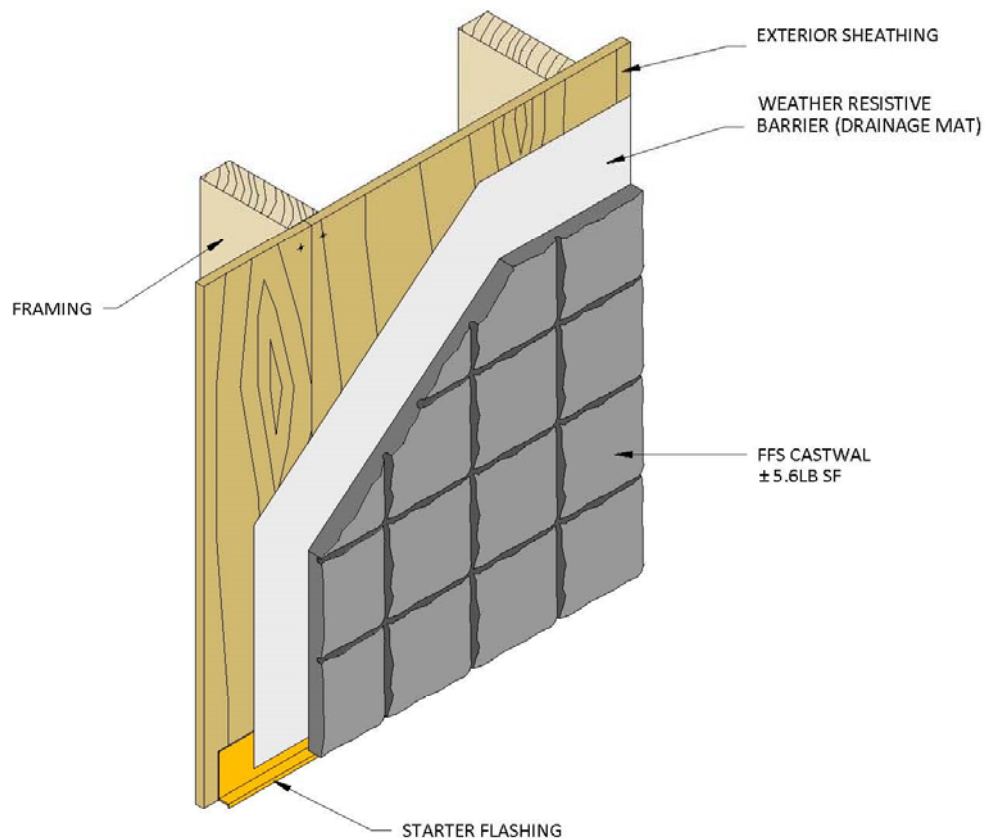
Castwal System

System Layout

This drawing represents a generic sample detail for illustration purposes only.
Actual details utilized may vary due to specific project requirements.

SAMPLE DETAIL

(New Construction)

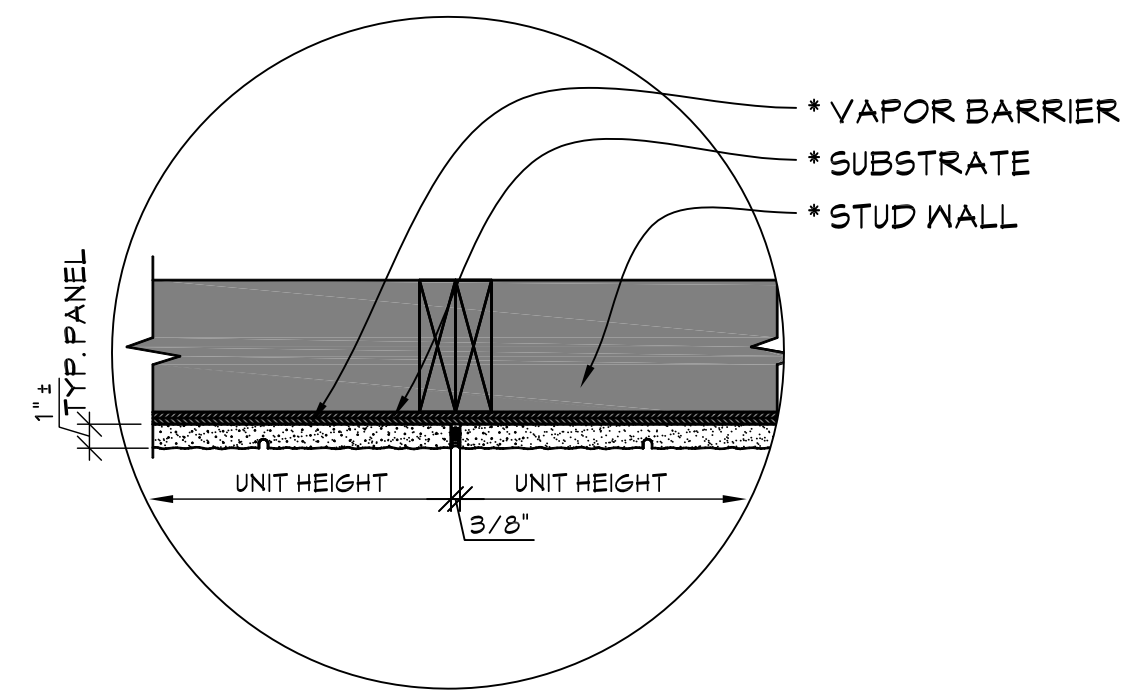


CASTWAL VENEER PANEL PROVIDED BY
FFS

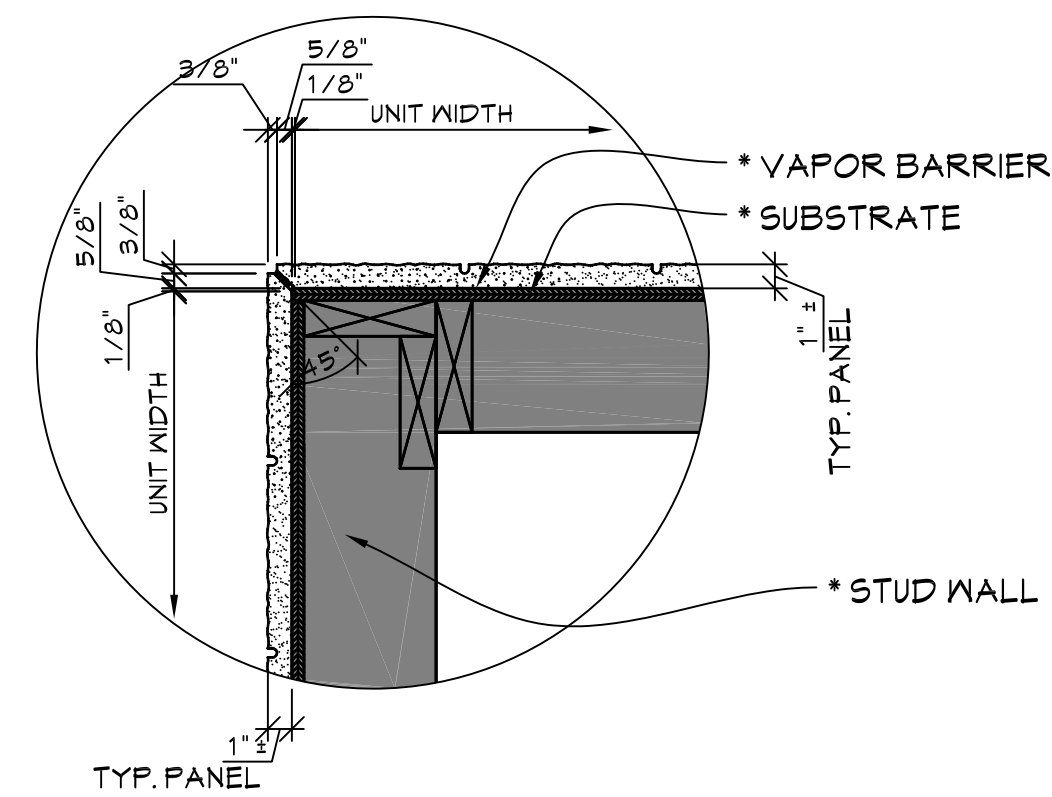
Castwal System

System Layout

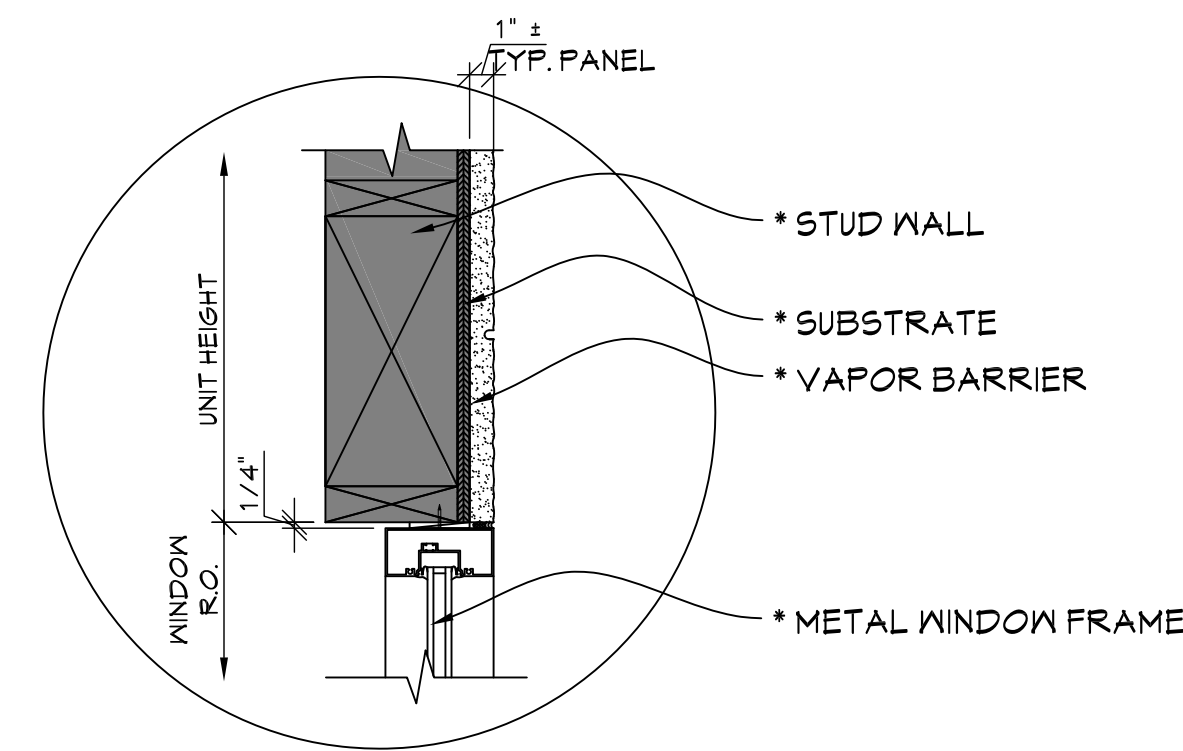
This drawing represents a generic sample detail for illustration purposes only.
Actual details utilized may vary due to specific project requirements.



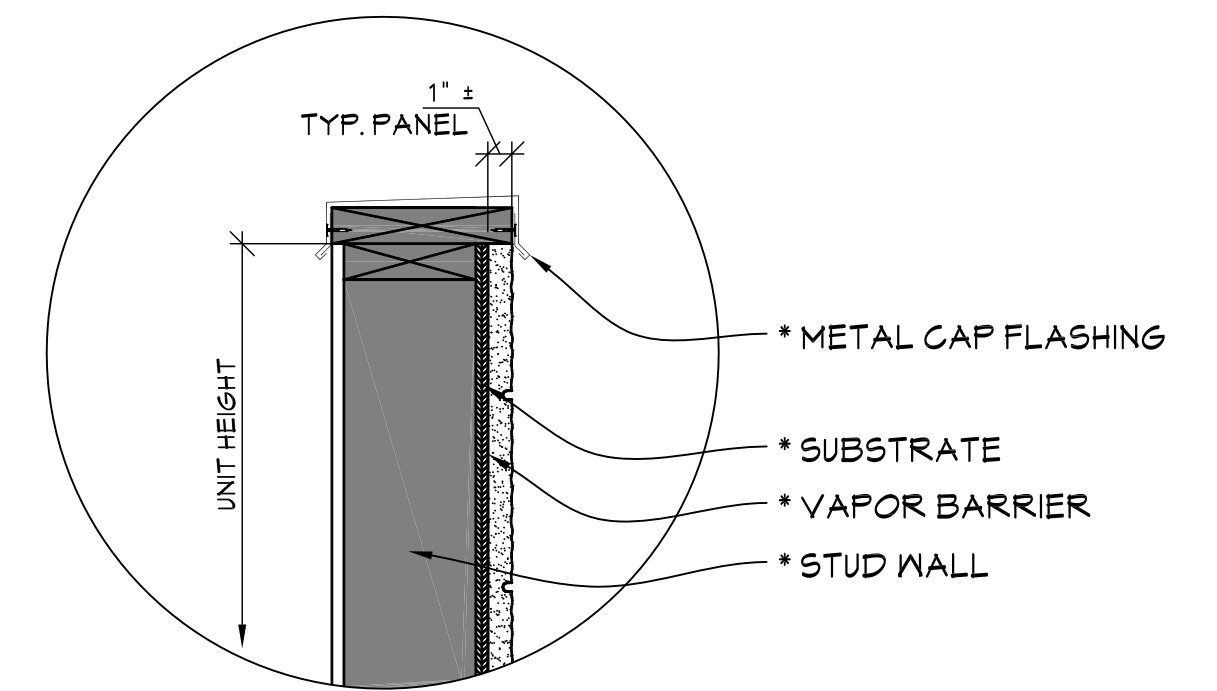
A VERTICAL JOINT
SCALE 1-1/2" = 1'-0"



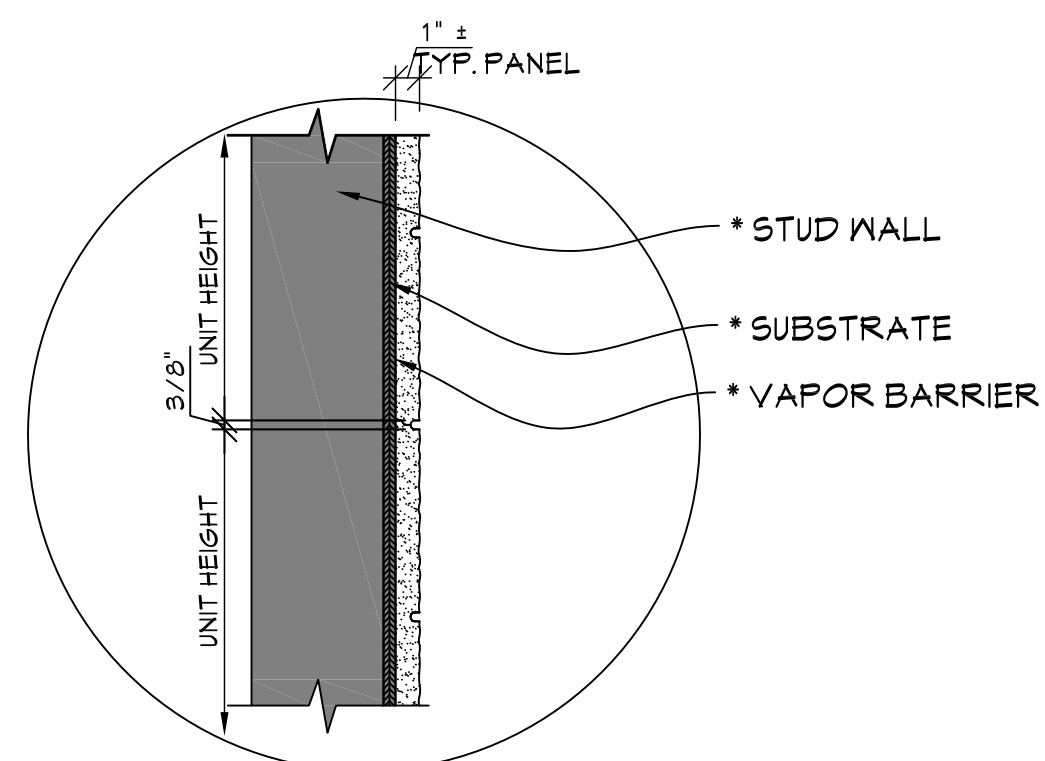
E OUTSIDE CORNER
SCALE 1-1/2" = 1'-0"



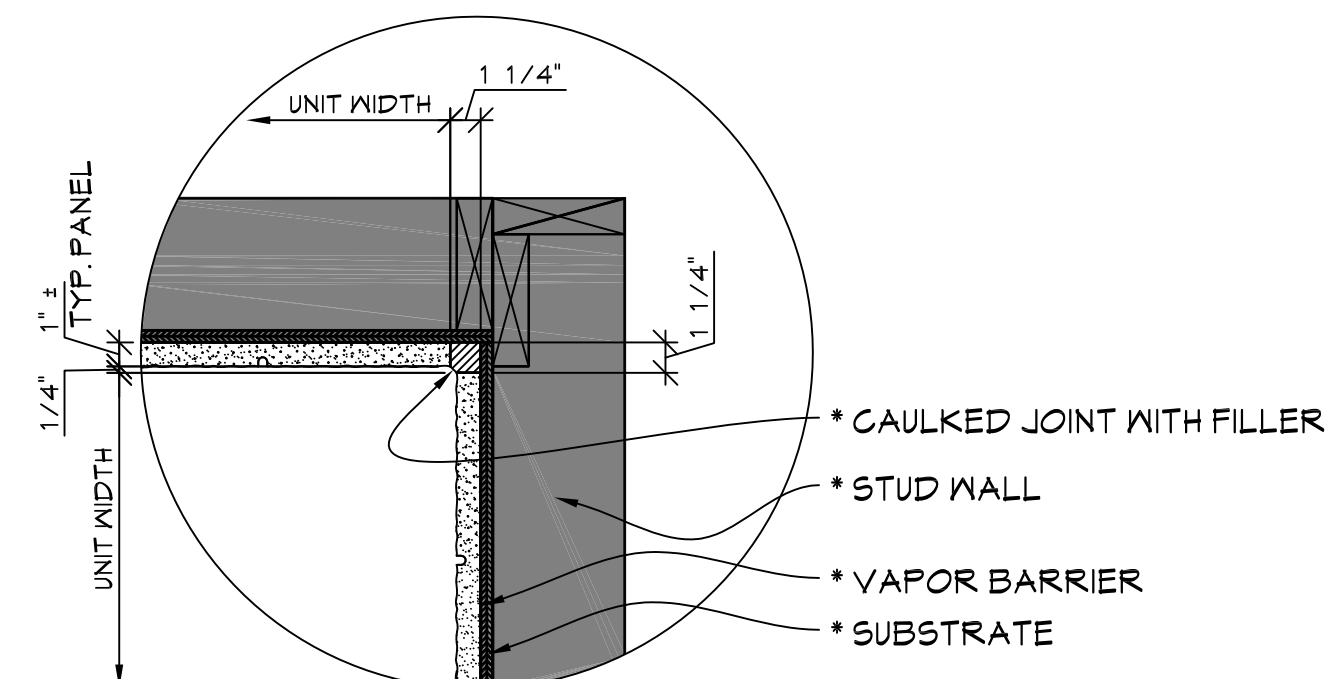
J WINDOW HEAD
SCALE 1-1/2" = 1'-0"



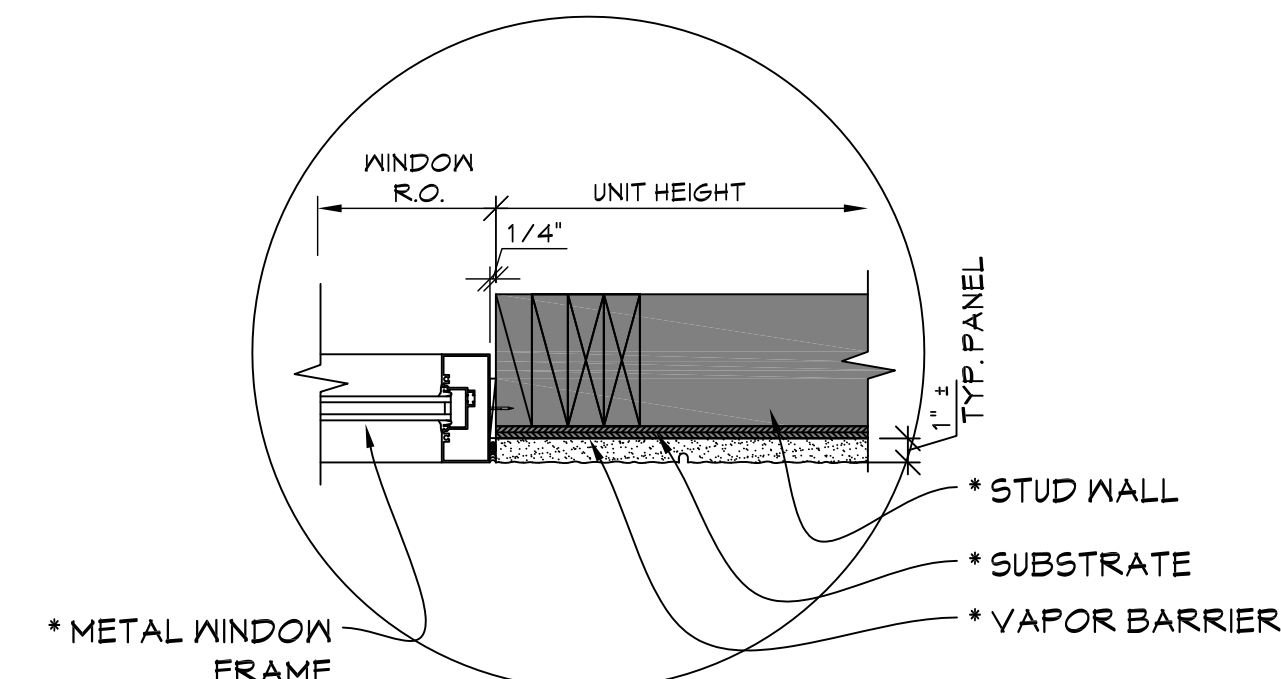
M PARAPET OF WALL
SCALE 1-1/2" = 1'-0"



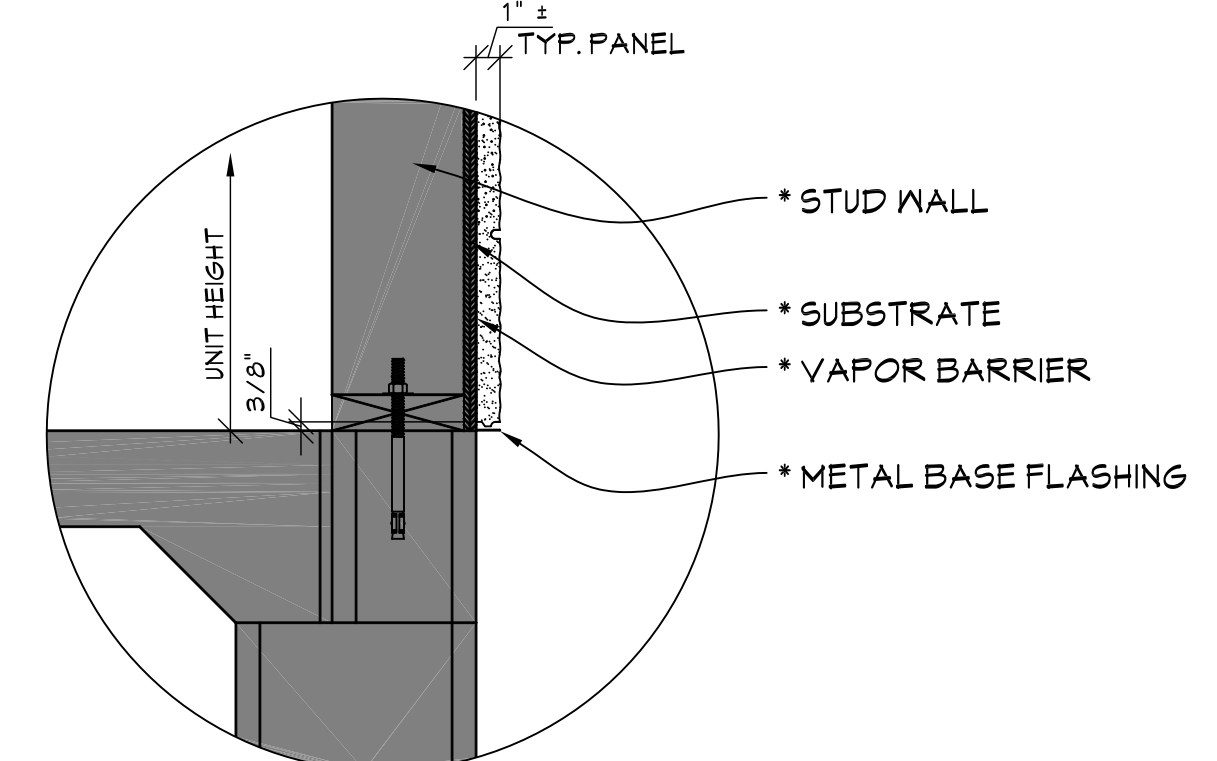
B HORIZONTAL JOINT
SCALE 1-1/2" = 1'-0"



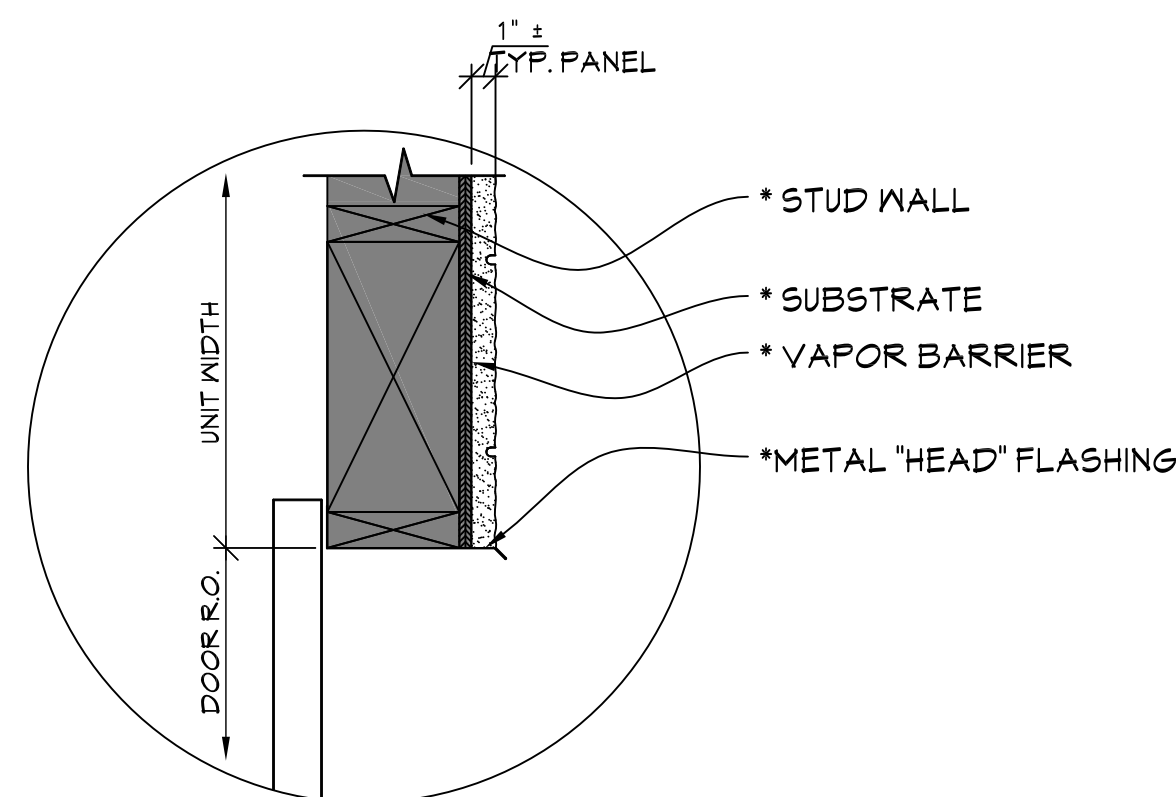
F INSIDE CORNER
SCALE 1-1/2" = 1'-0"



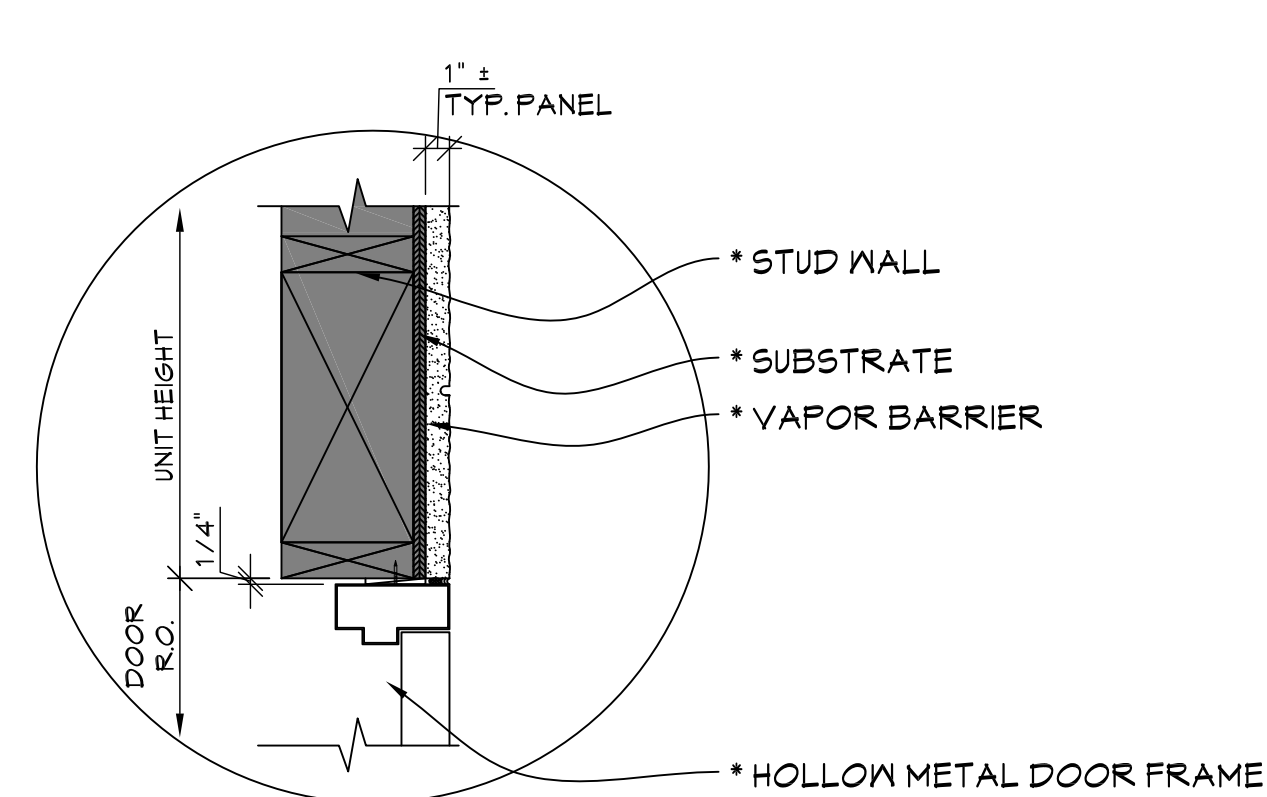
K WINDOW JAMB
SCALE 1-1/2" = 1'-0"



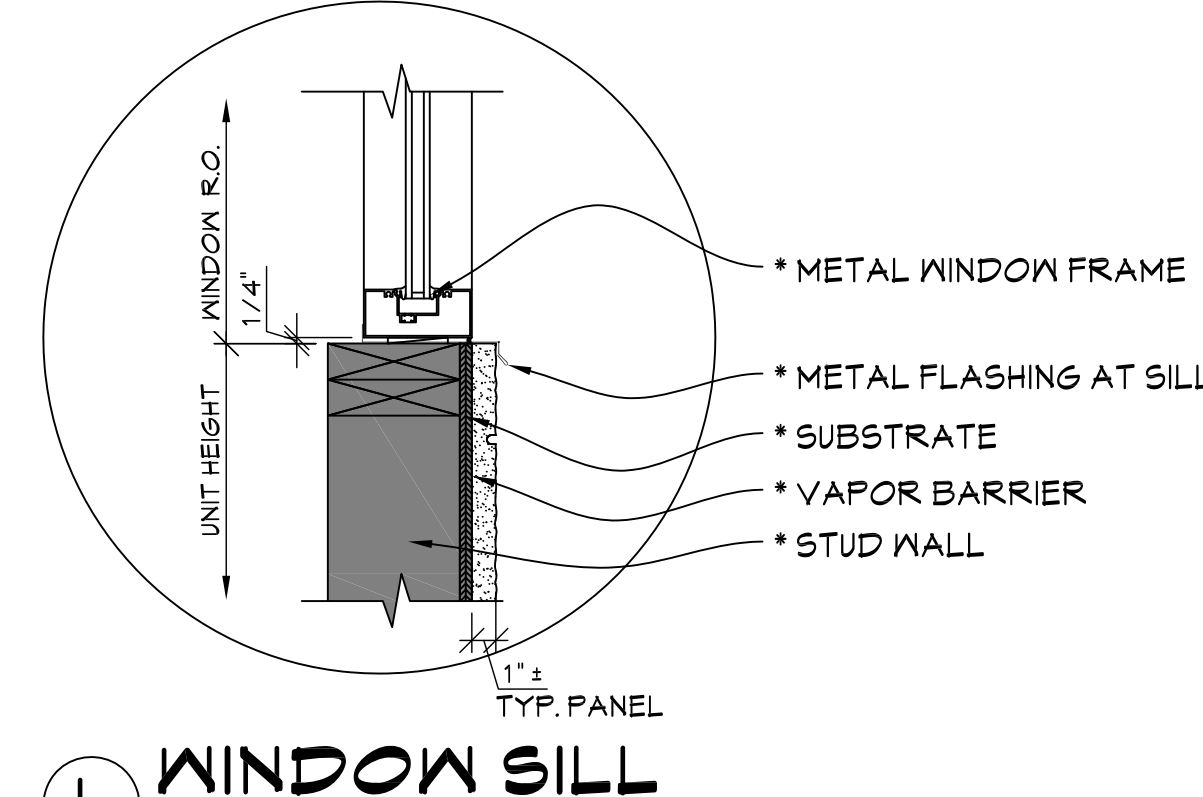
N BASE OF WALL
SCALE 1-1/2" = 1'-0"



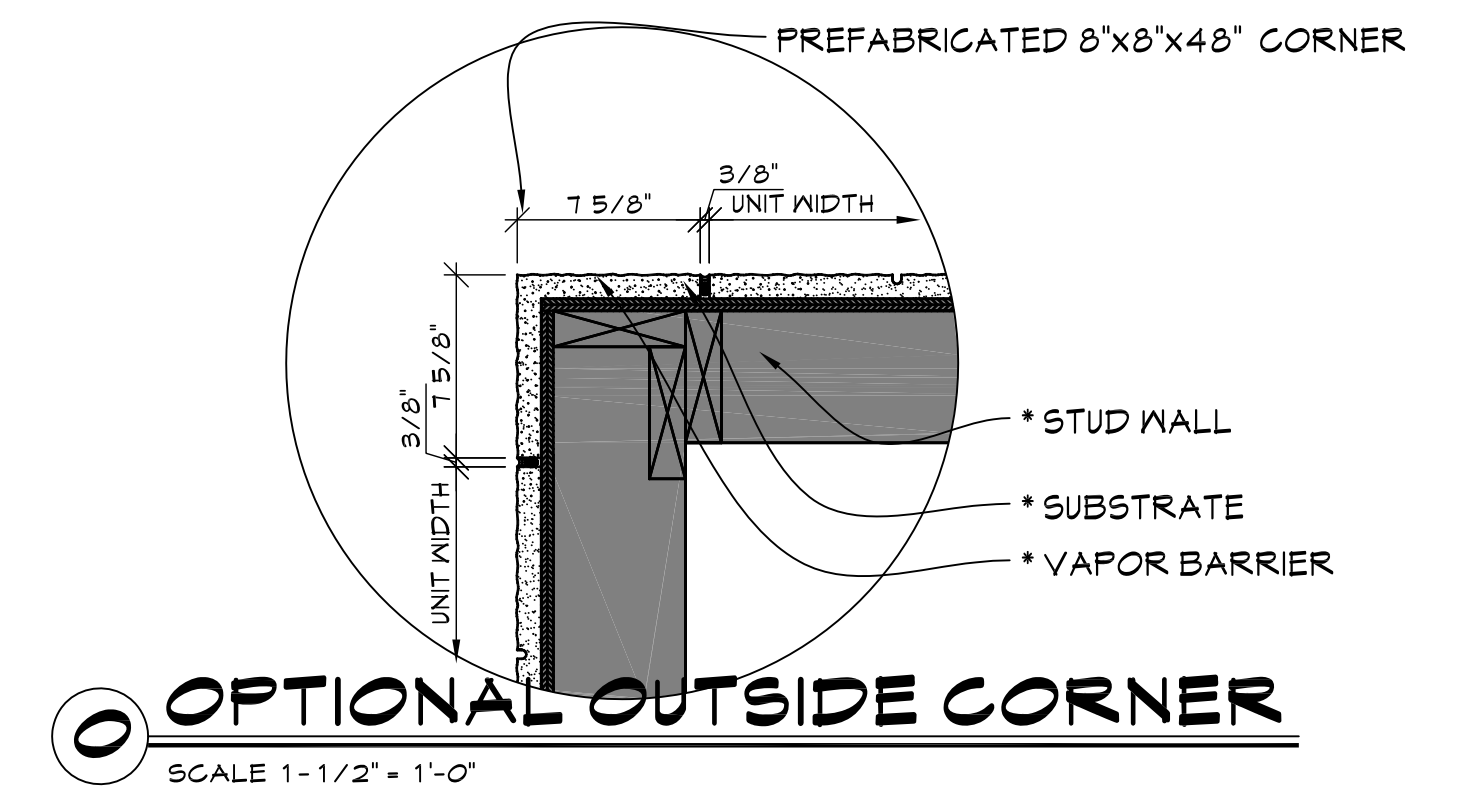
C OVERHEAD DOOR HEAD
SCALE 1-1/2" = 1'-0"



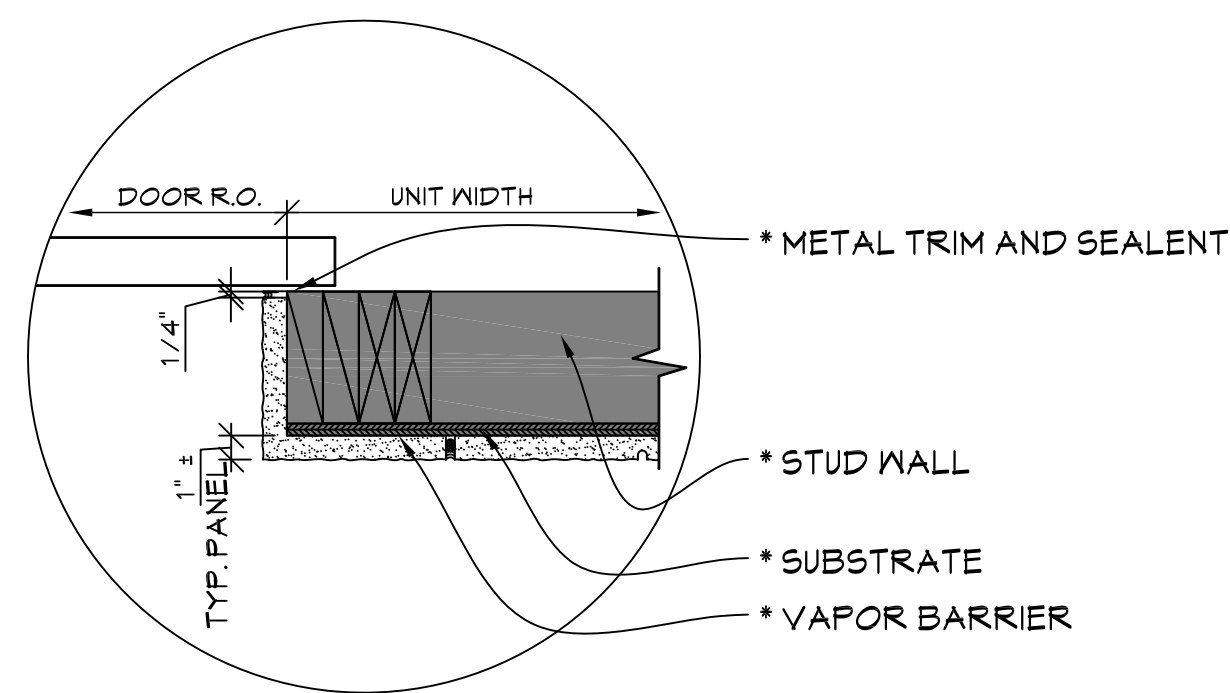
G HOLLOW METAL DOOR HEAD
SCALE 1-1/2" = 1'-0"



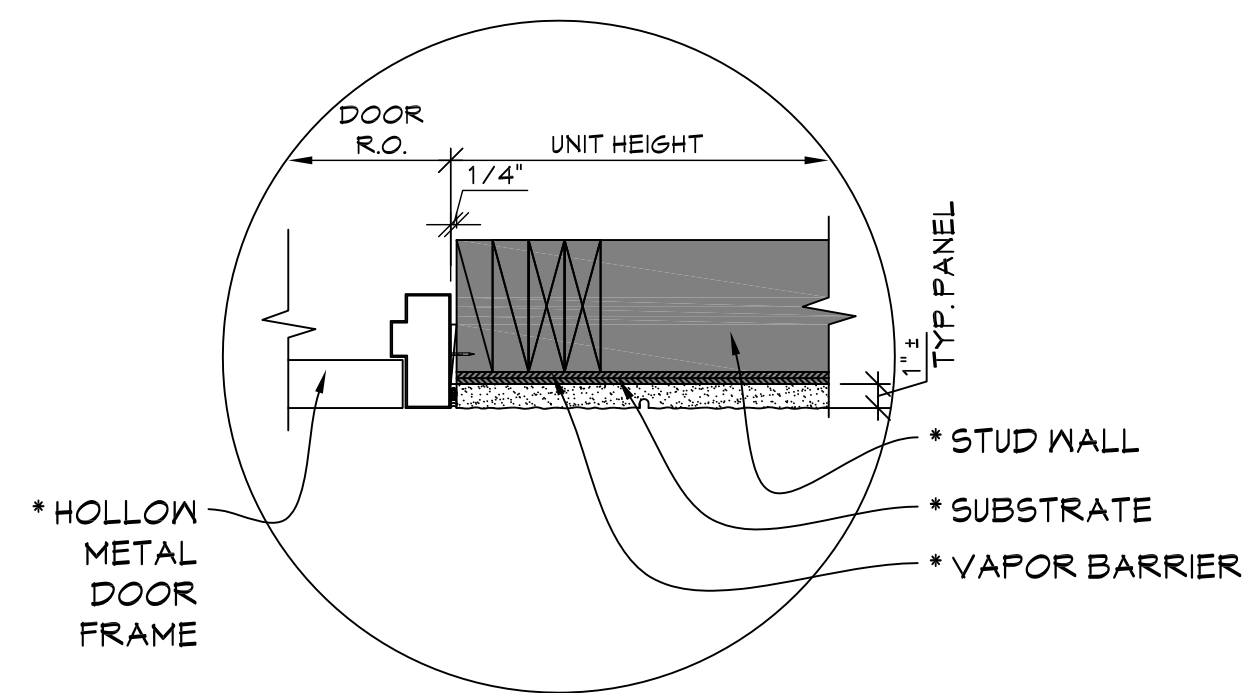
L WINDOW SILL
SCALE 1-1/2" = 1'-0"



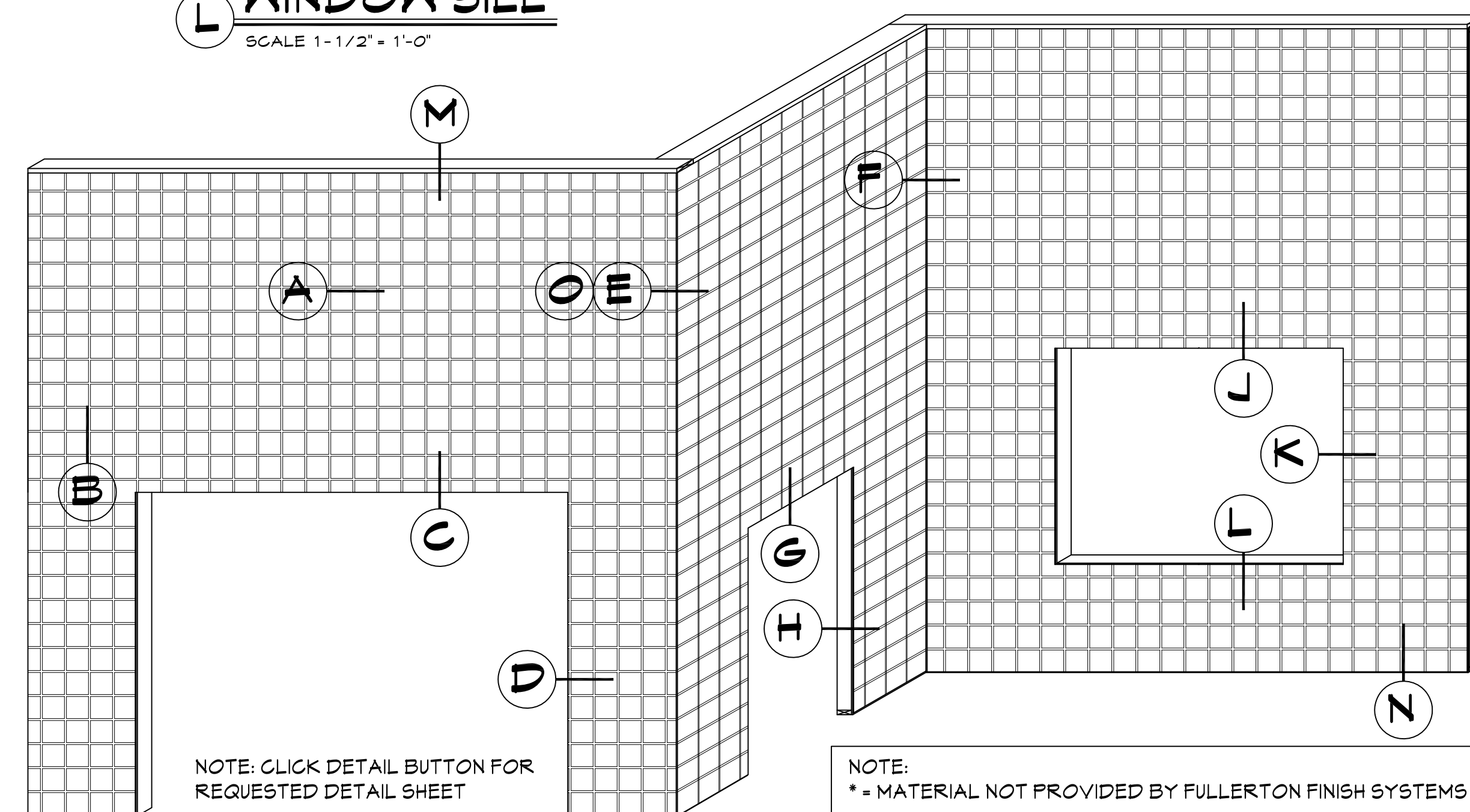
O OPTIONAL OUTSIDE CORNER
SCALE 1-1/2" = 1'-0"



D OVERHEAD DOOR JAMB
SCALE 1-1/2" = 1'-0"



H HOLLOW METAL DOOR JAMB
SCALE 1-1/2" = 1'-0"



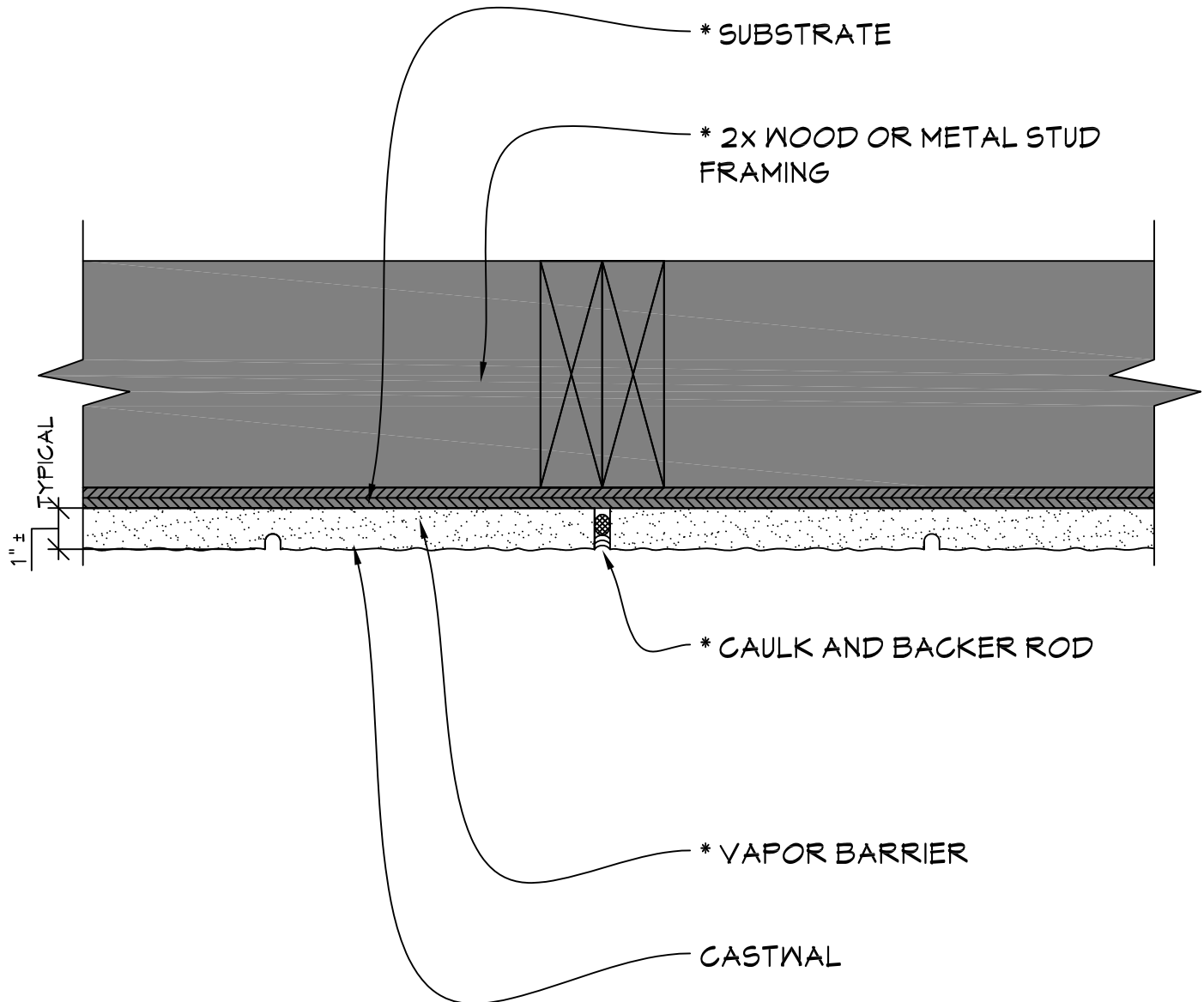
NOTE:
* = MATERIAL NOT PROVIDED BY FULLERTON FINISH SYSTEMS

CASTWAL

FFS
FULLERTON
FINISH SYSTEMS

8645 W. 21st. Street P.O. Box 609
Sand Springs, OK. 74063
PH (918) 246-9995

CLICK FFS LOGO TO RETURN TO MAIN PAGE



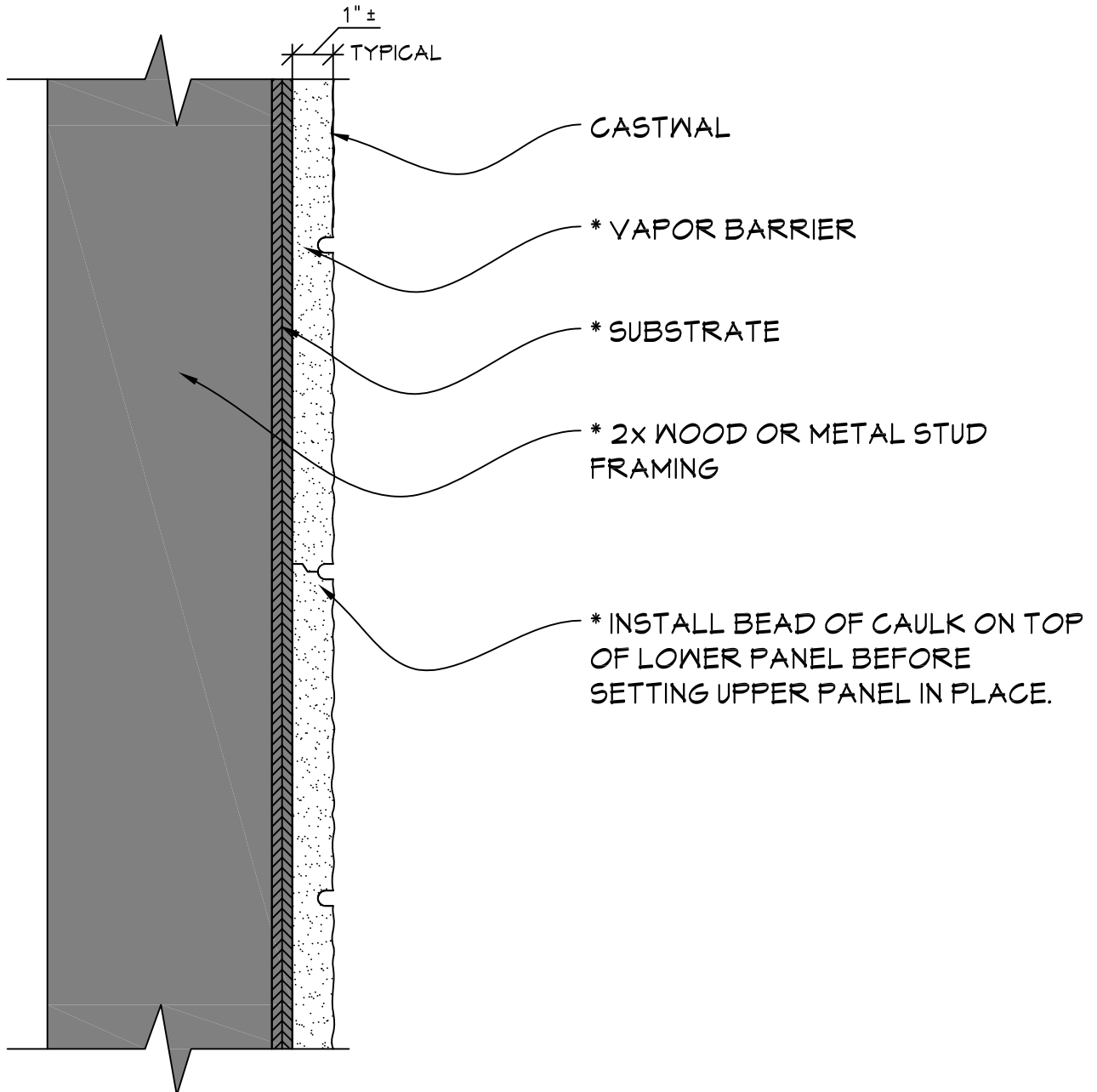
TYPICAL VERTICAL DETAIL

SCALE: 3" = 1'-0"

NOTE:

* = MATERIAL NOT PROVIDED BY FULLERTON FINISH SYSTEMS

CASTWAL

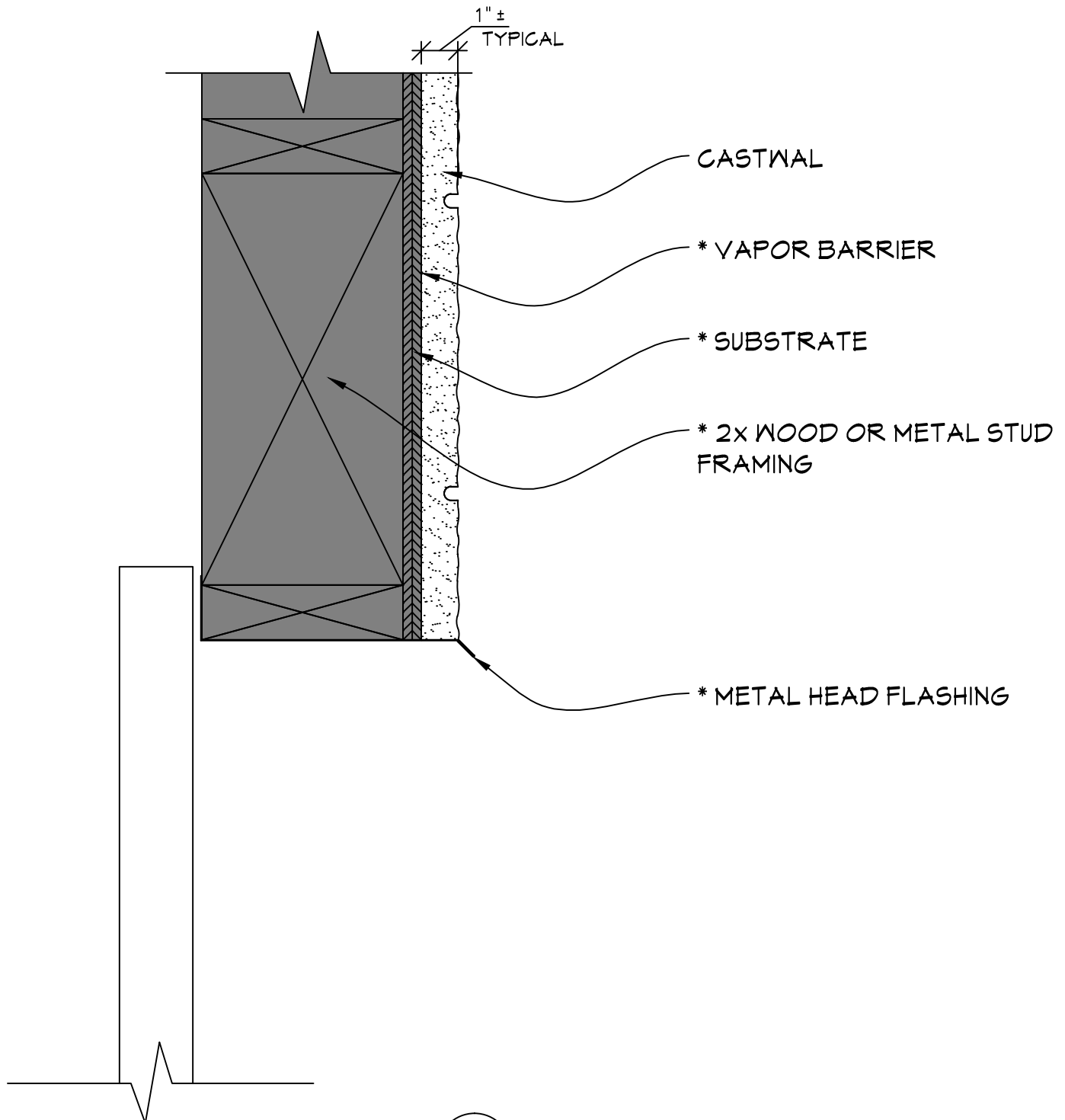


TYPICAL HORIZONTAL DETAIL

SCALE: 3" = 1'-0"

NOTE:
 * = MATERIAL NOT PROVIDED BY FULLERTON FINISH SYSTEMS

CASTWAL



TYPICAL OVERHEAD DOOR DETAIL

SCALE: 3" = 1'-0"

NOTE:

* = MATERIAL NOT PROVIDED BY FULLERTON FINISH SYSTEMS

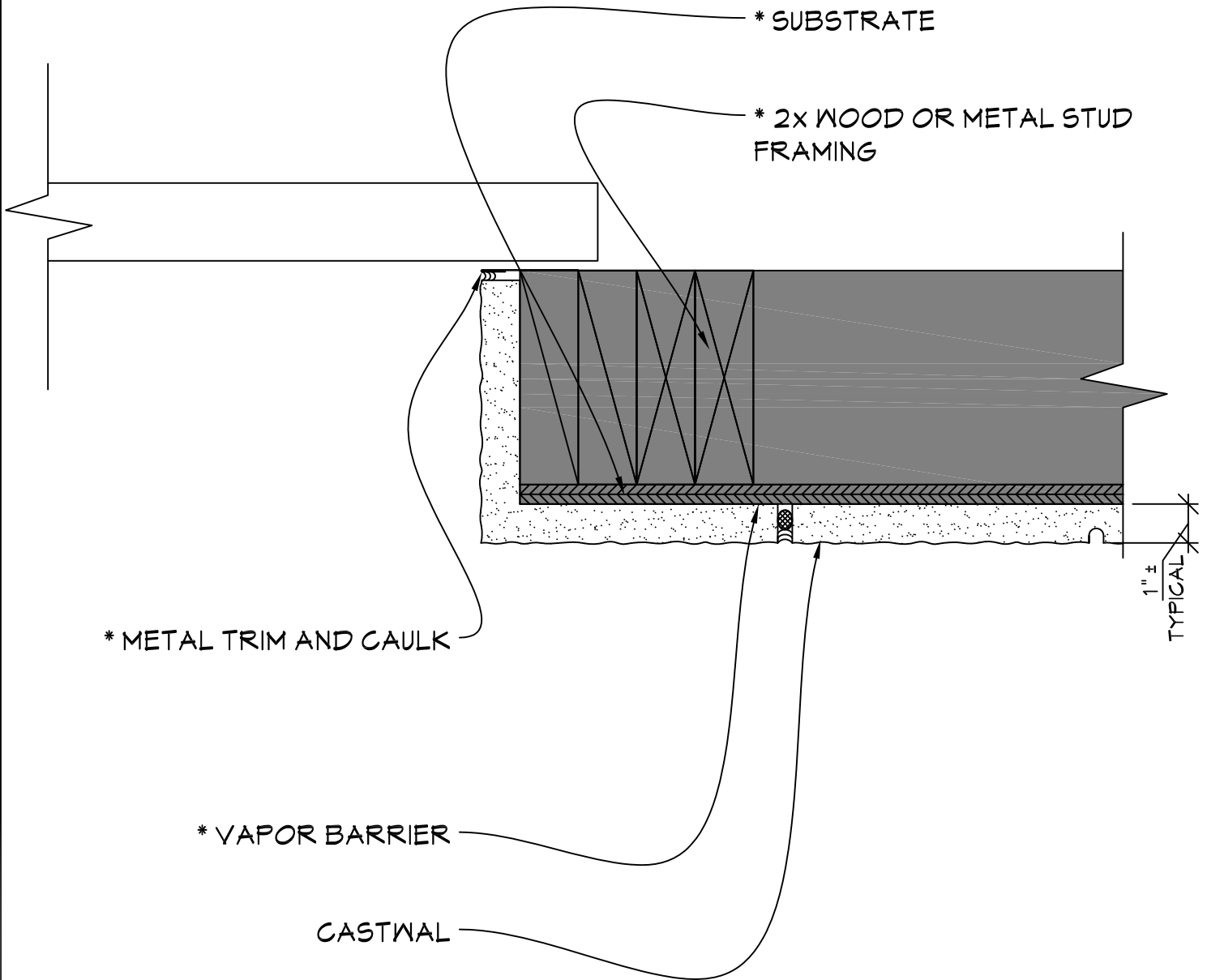


FULLERTON
FINISH SYSTEMS

8645 W. 21st. Street P.O. Box 609
Sand Springs, OK. 74063
PH (918) 246-9995

CASTWAL

CLICK FFS LOGO TO RETURN TO MAIN PAGE



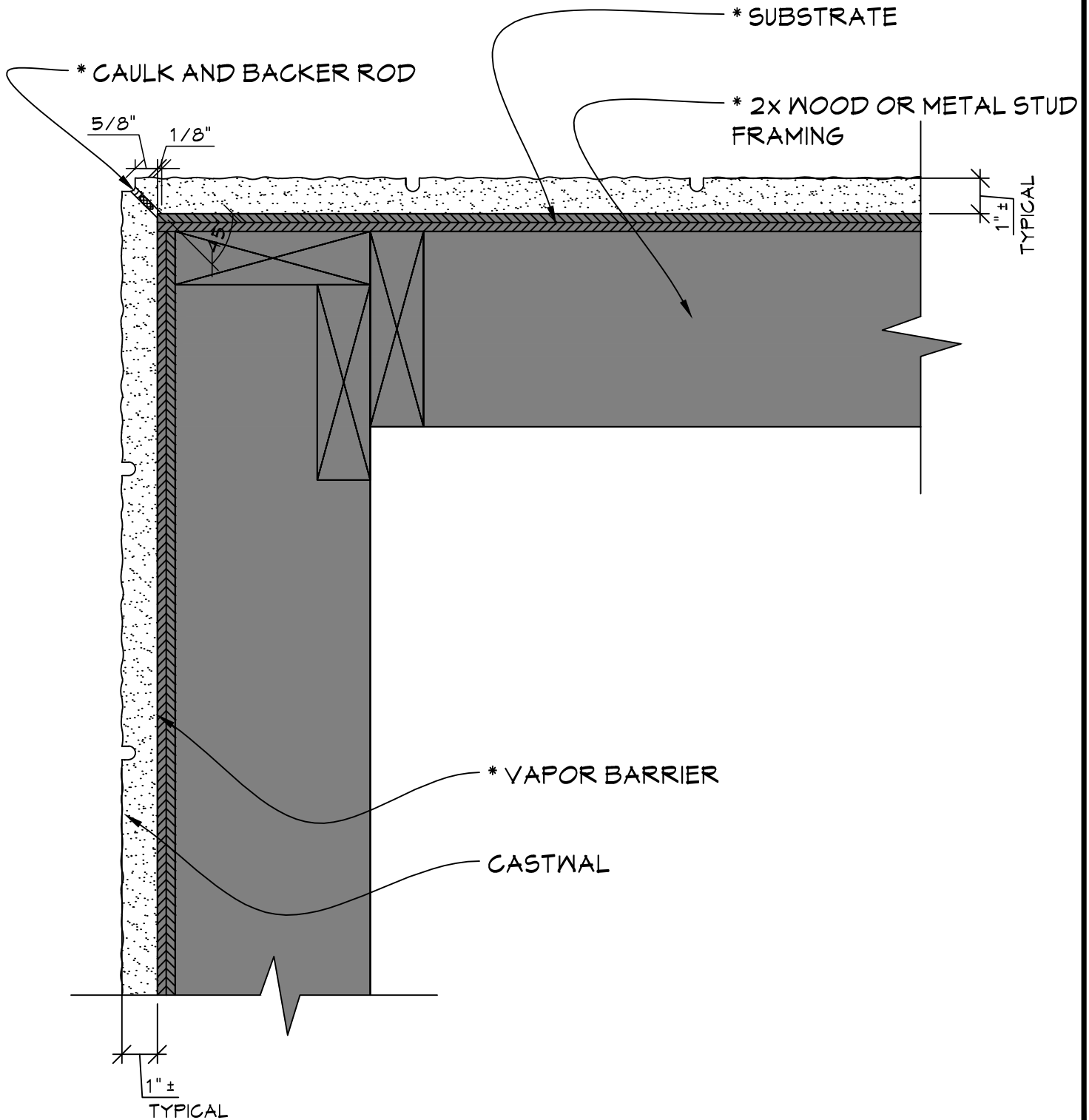
TYPICAL OVERHEAD DOOR JAMB DETAIL

SCALE: 3" = 1'-0"

NOTE:

* = MATERIAL NOT PROVIDED BY FULLERTON FINISH SYSTEMS

CASTWAL



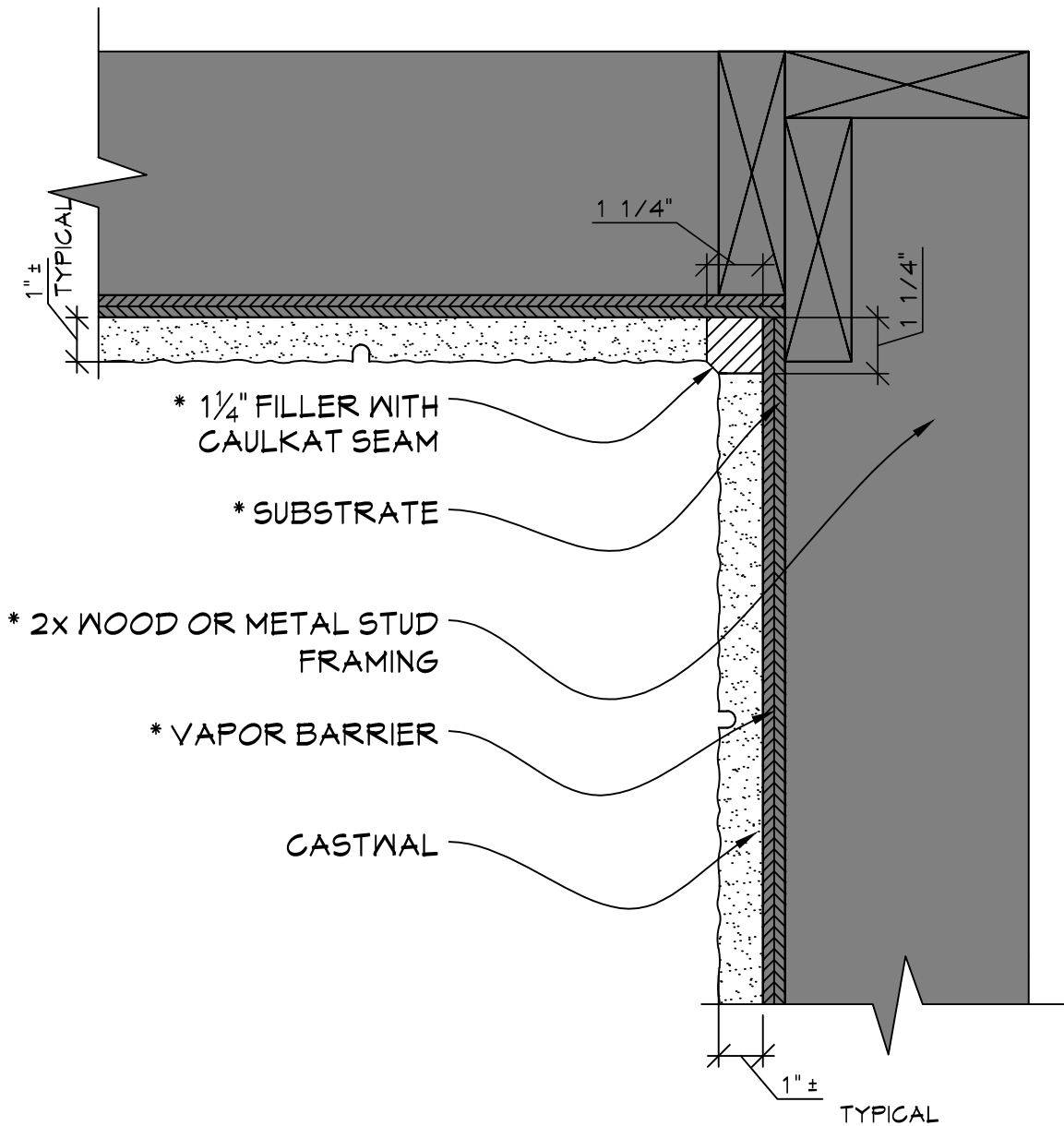
TYPICAL OUTSIDE CORNER DETAIL

SCALE: 3" = 1'-0"

NOTE:

* = MATERIAL NOT PROVIDED BY FULLERTON FINISH SYSTEMS

CASTWAL



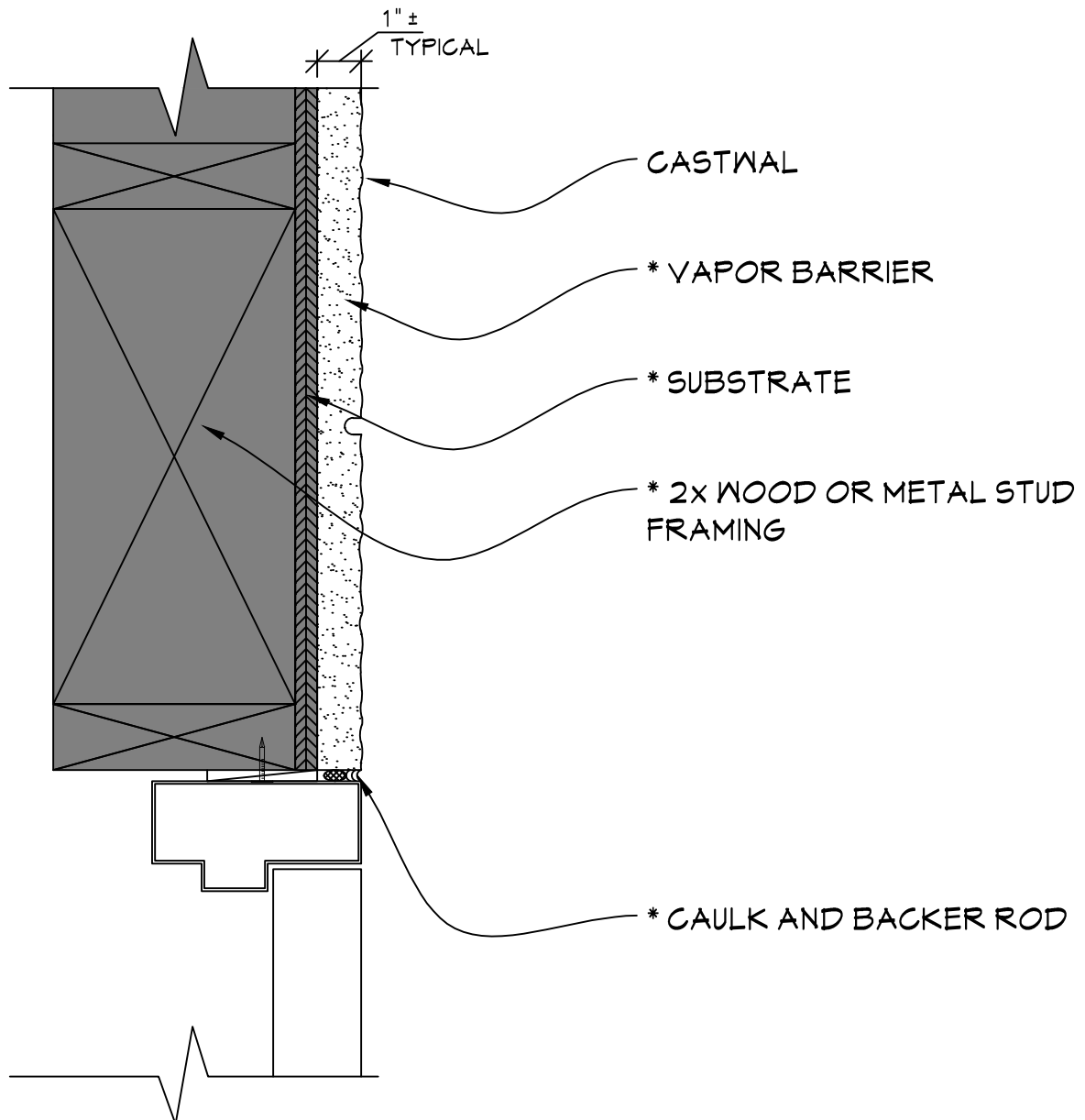
TYPICAL INSIDE CORNER DETAIL

SCALE: 3" = 1'-0"

NOTE:

* = MATERIAL NOT PROVIDED BY FULLERTON FINISH SYSTEMS

CASTWAL

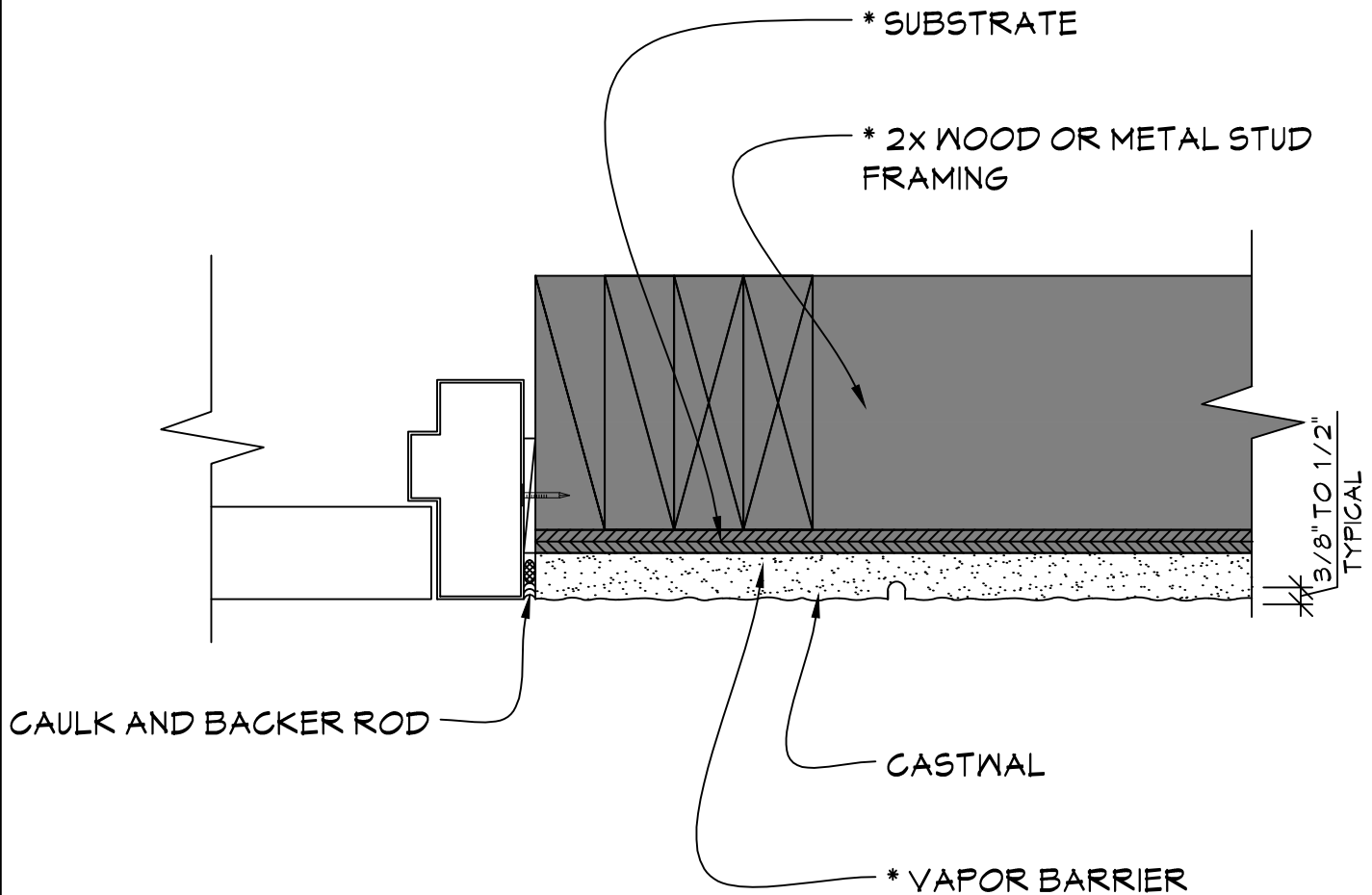


TYPICAL DOOR HEAD DETAIL

SCALE: 3" = 1'-0"

NOTE:
 * = MATERIAL NOT PROVIDED BY FULLERTON FINISH SYSTEMS

CASTWAL

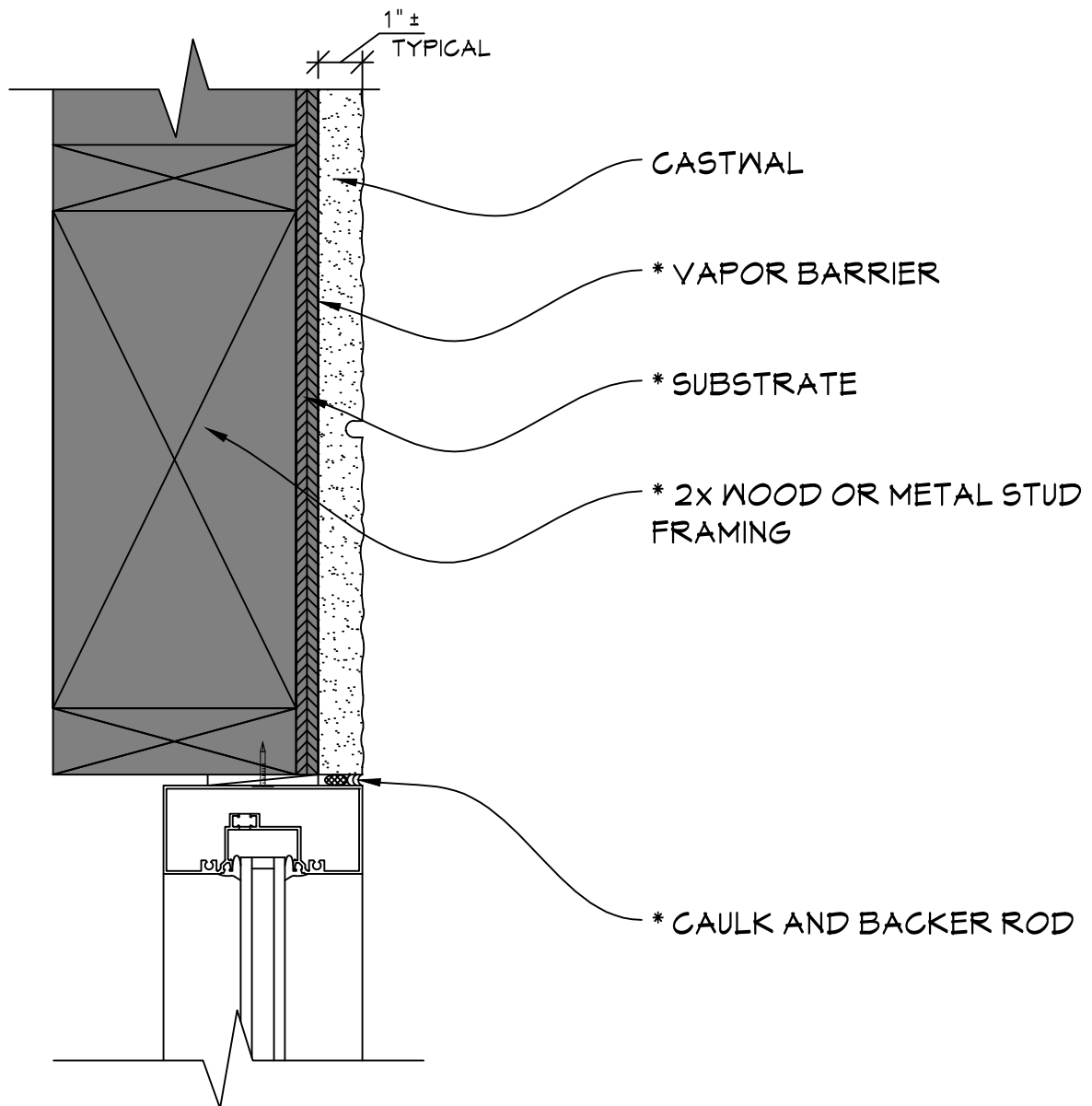


TYPICAL DOOR JAMB DETAIL

SCALE: 3" = 1'-0"

NOTE:
 * = MATERIAL NOT PROVIDED BY FULLERTON FINISH SYSTEMS

CLICK FFS LOGO TO RETURN TO MAIN PAGE

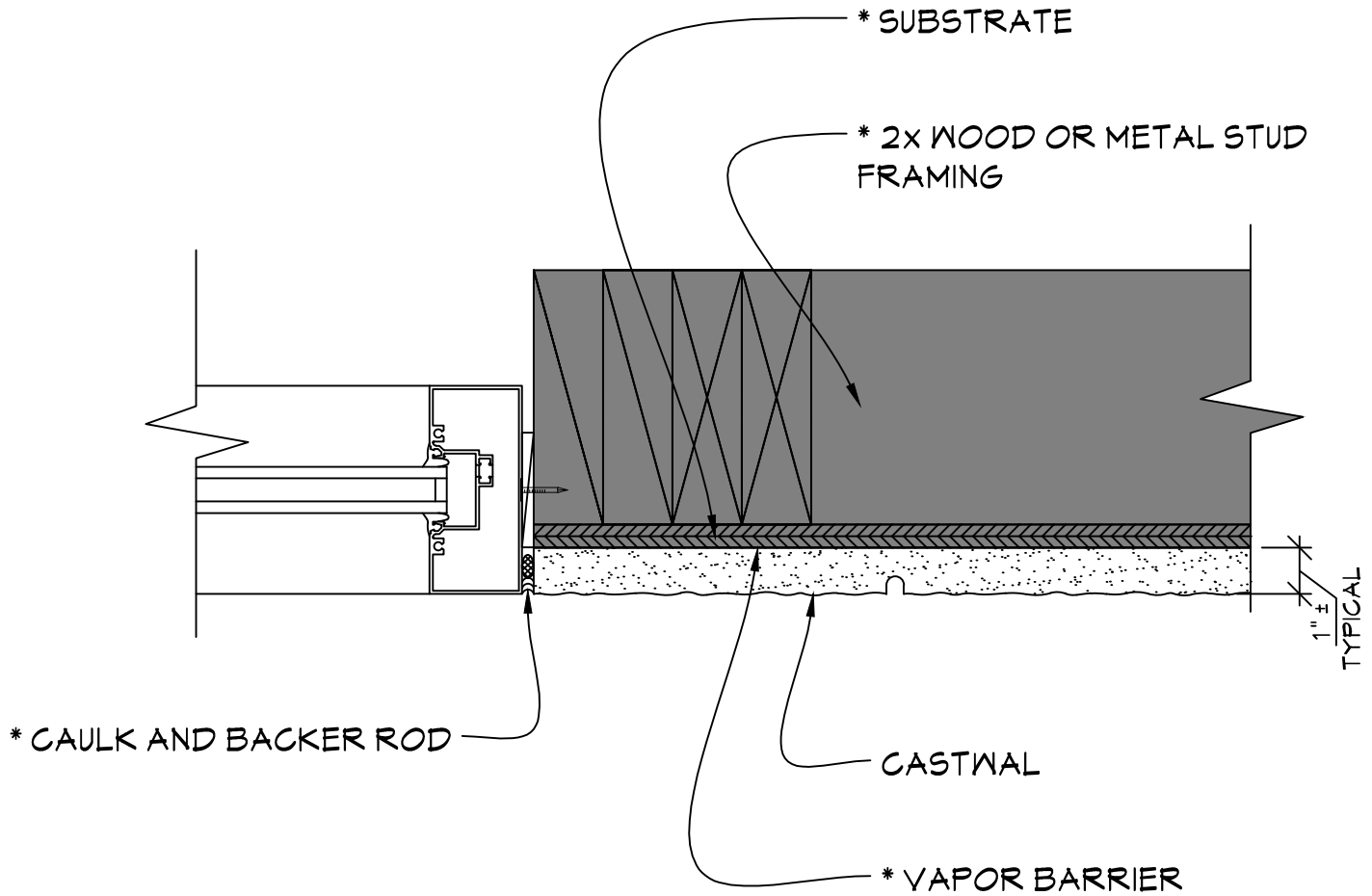


TYPICAL WINDOW HEAD DETAIL

SCALE: 3" = 1'-0"

NOTE:
* = MATERIAL NOT PROVIDED BY FULLERTON FINISH SYSTEMS

CASTWAL



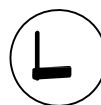
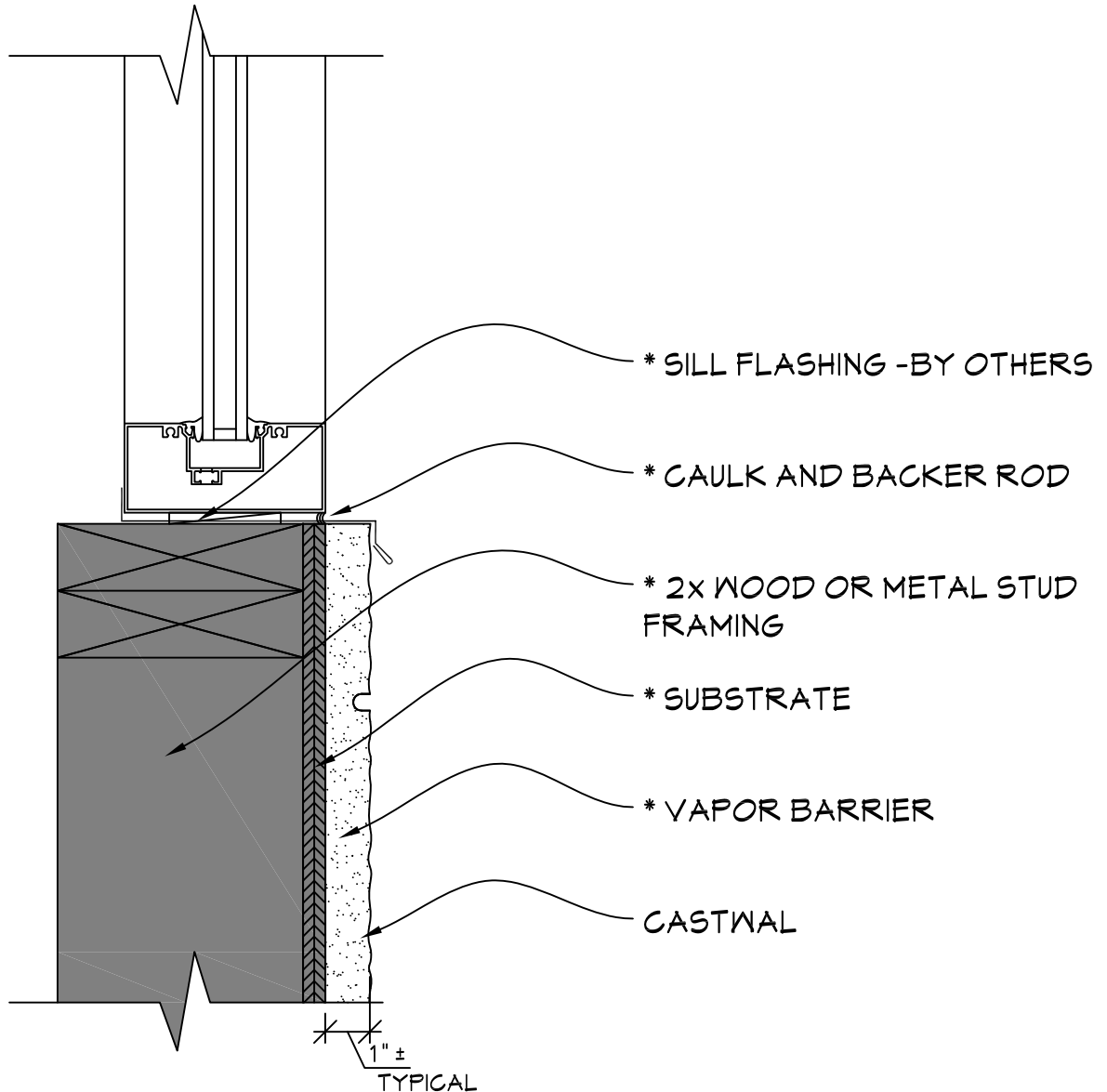
TYPICAL WINDOW JAMB DETAIL

SCALE: 3" = 1'-0"

NOTE:

* = MATERIAL NOT PROVIDED BY FULLERTON FINISH SYSTEMS

CASTWAL

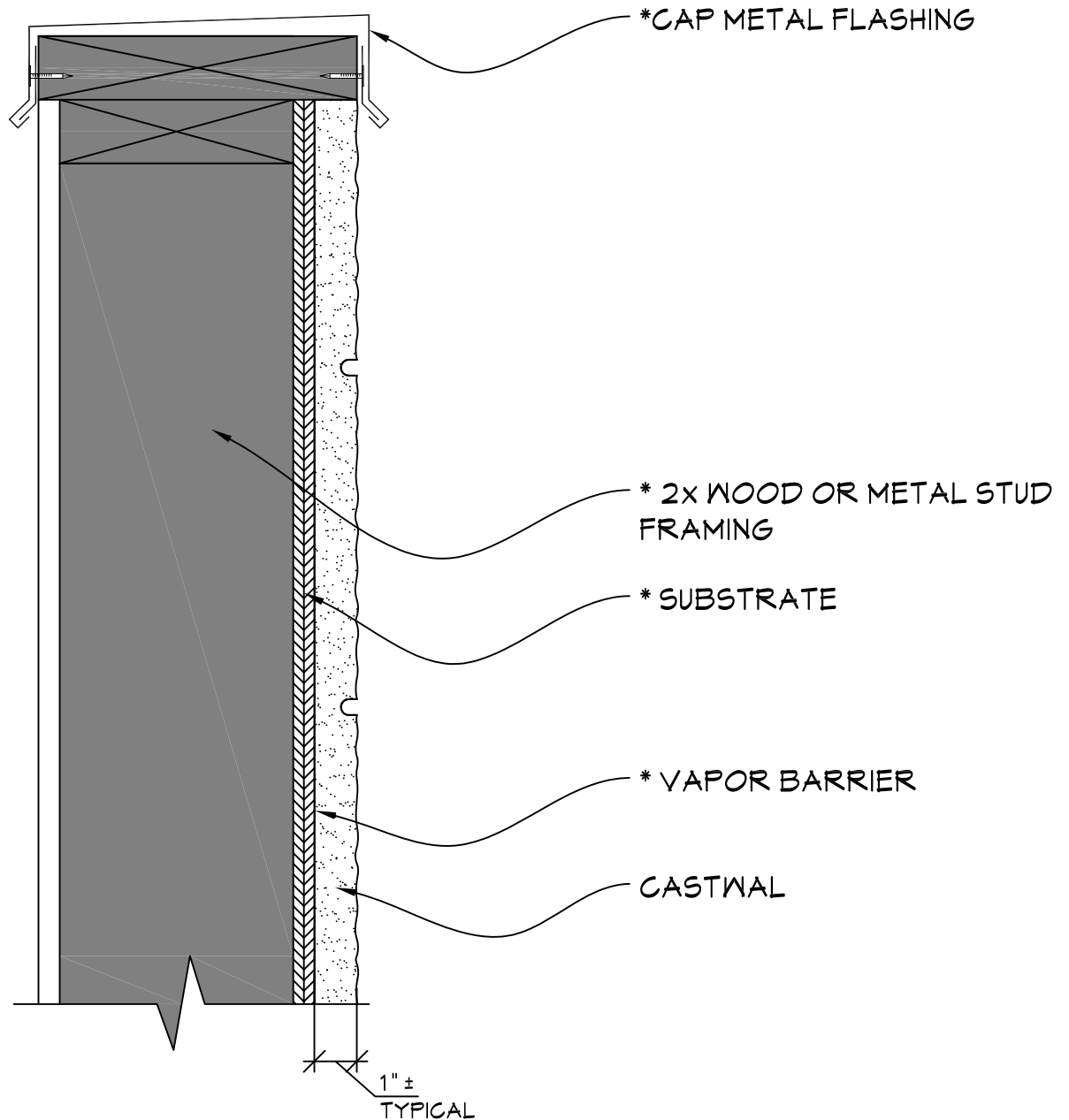


TYPICAL WINDOW SILL DETAIL

SCALE: 3" = 1'-0"

NOTE:
 * = MATERIAL NOT PROVIDED BY FULLERTON FINISH SYSTEMS

CASTWAL

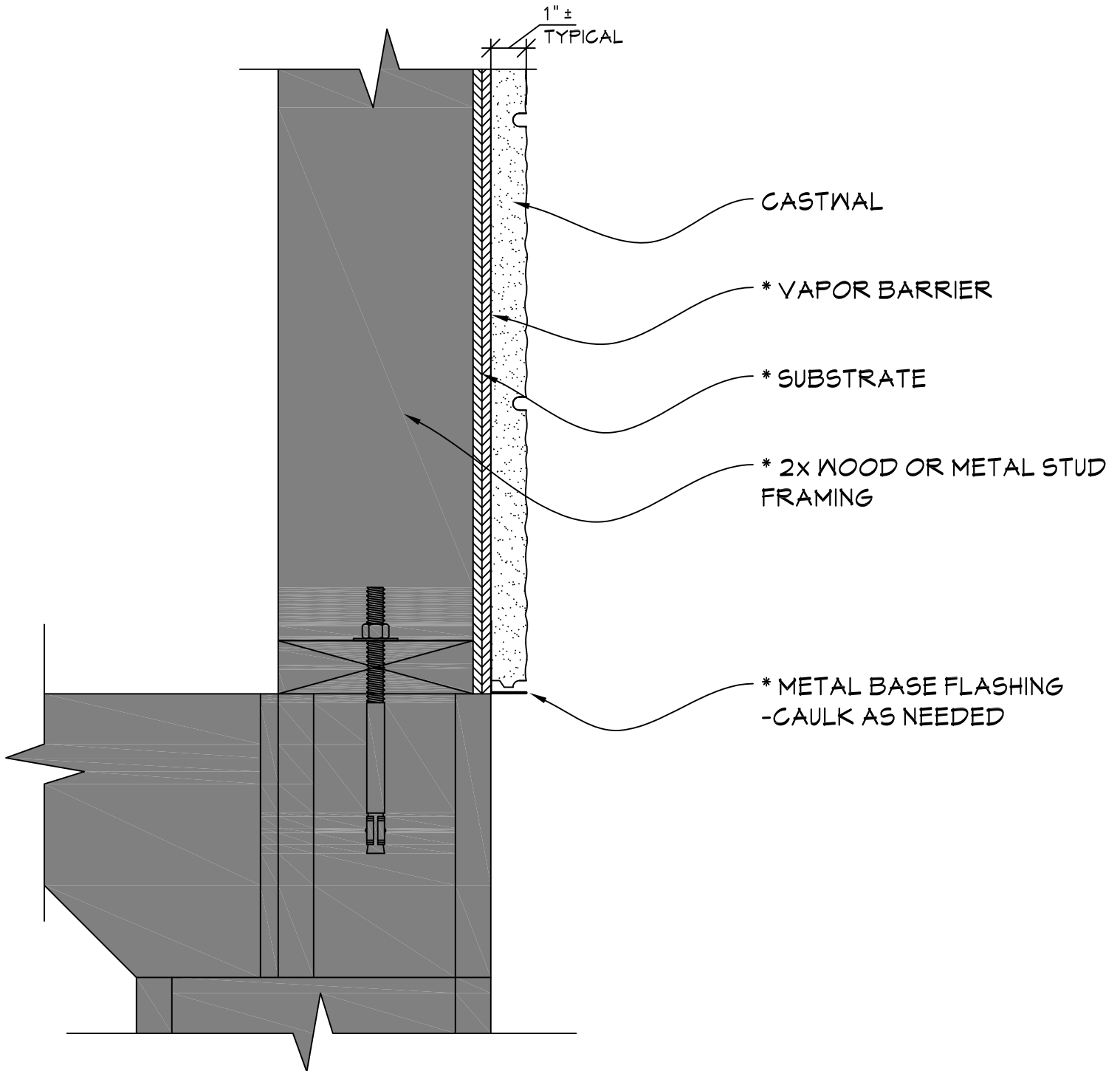


TYPICAL PARAPET DETAIL

SCALE: 3" = 1'-0"

NOTE:
* = MATERIAL NOT PROVIDED BY FULLERTON FINISH SYSTEMS

CASTWAL

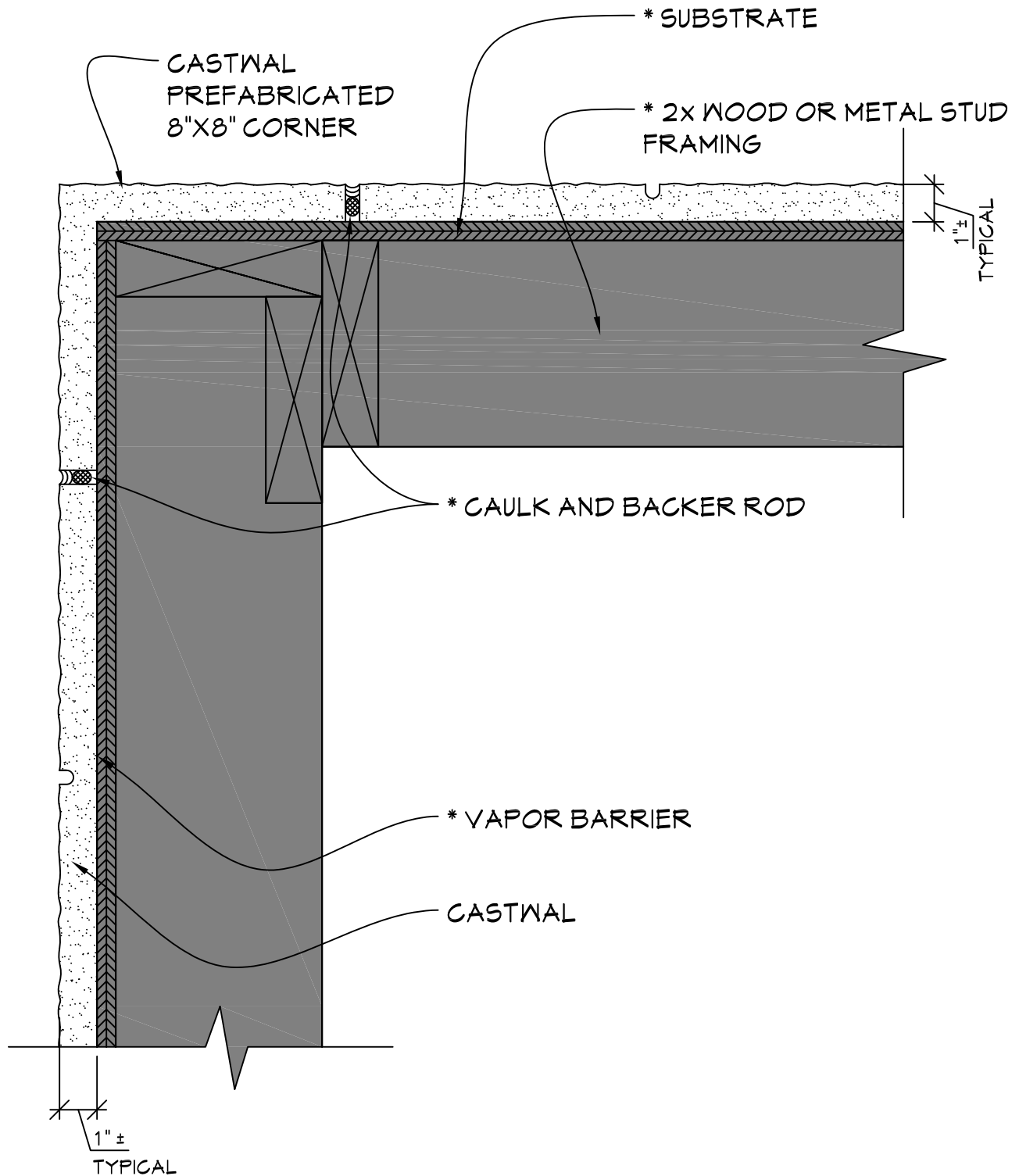


TYPICAL BASE DETAIL

SCALE: 3" = 1'-0"

NOTE:
 * = MATERIAL NOT PROVIDED BY FULLERTON FINISH SYSTEMS

CASTWAL



OPTIONAL OUTSIDE PREFAB CORNER DETAIL

SCALE: 3" = 1'-0"

NOTE:
 * = MATERIAL NOT PROVIDED BY FULLERTON FINISH SYSTEMS