

LAKE GEORGE WATERSHED DATA ATLAS

October 06, 2016



LAKE GEORGE ASSOCIATION

Protecting Our Water. Educating for the Future.

— SINCE 1885 —

LAKE GEORGE WATERSHED DATA ATLAS

PROJECT SPONSOR



FUNDING SUPPORT



TECHNICAL ADVISORY TEAM



**Lake George
Park Commission**



PROJECT CONSULTANT



LAKE GEORGE WATERSHED DATA ATLAS

CONTENT:

- WATERSHED-SPECIFIC POPULATION, HOUSING, LAND USE, AND INFRASTRUCTURE CHARACTERISTICS
- GIS BUILDOUT ANALYSIS FOR THE ENTIRE WATERSHED

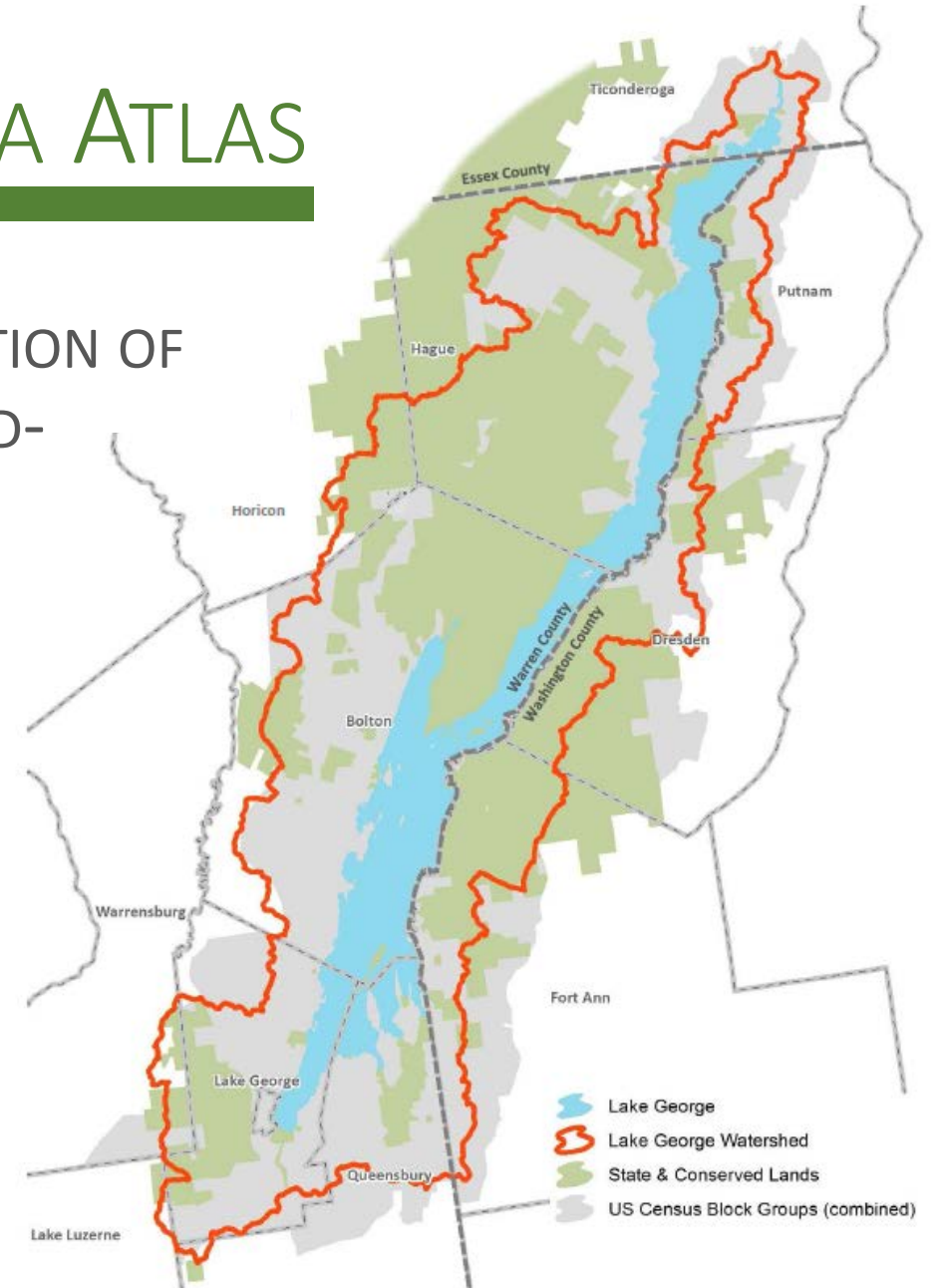
INTENT:

- TOOL FOR LOCAL PLANNERS, GOVERNMENT OFFICIALS, RESEARCHERS, AND ORGANIZATIONS SEEKING INFORMATION IN SUPPORT OF PLANNING AND WATER QUALITY RELATED INITIATIVES
- START A DIALOGUE ABOUT LAND USE AND FUTURE GROWTH WITHIN THE WATERSHED

LAKE GEORGE WATERSHED DATA ATLAS

THE LAKE GEORGE WATERSHED INCLUDES A PORTION OF SEVERAL MUNICIPALITIES. THIS MAKES WATERSHED-SPECIFIC INFORMATION GATHERING DIFFICULT:

- THREE (3) COUNTIES
- ELEVEN (11) TOWNS
- ONE (1) VILLAGE
- MULTIPLE US CENSUS TRACTS, BLOCK GROUPS, AND BLOCKS



LAKE GEORGE WATERSHED DATA ATLAS

THE REPORT PROVIDES KEY INFORMATION ON THE FOLLOWING TOPICS:

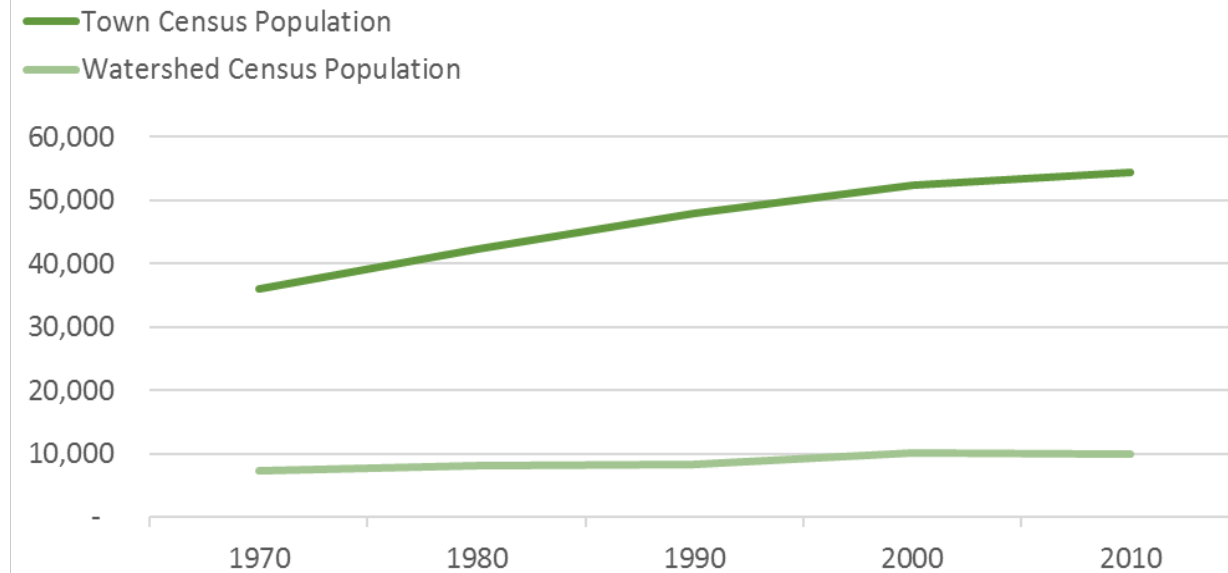
- POPULATION AND HOUSING
- LAND USE, ZONING, AND THE BUILT ENVIRONMENT
- WATER, SEWER, AND ROADWAY INFRASTRUCTURE
- RESIDENTIAL DEVELOPMENT POTENTIAL

LAKE GEORGE WATERSHED DATA ATLAS

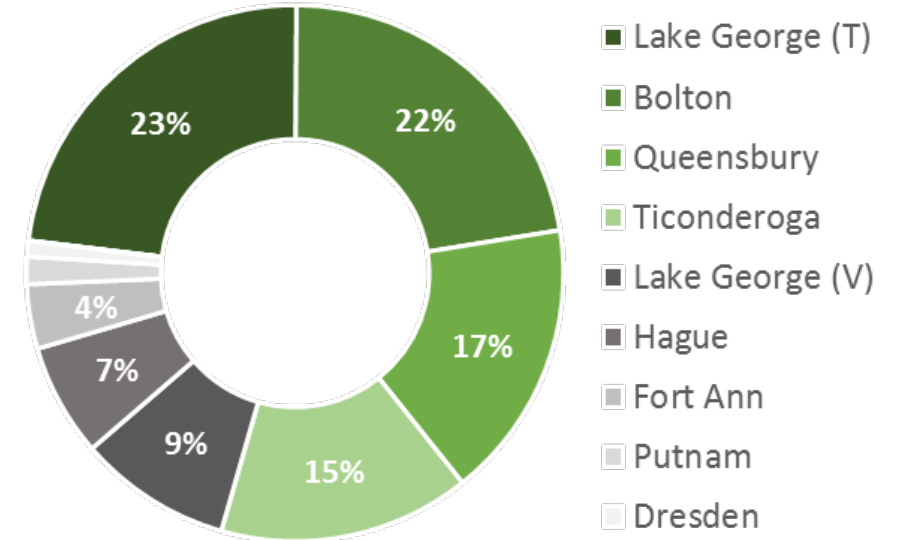


POPULATION CHARACTERISTICS:

US CENSUS POPULATIONS: TOWN-WIDE VS. WATERSHED



PERCENT OF WATERSHED POPULATION BY COMMUNITY

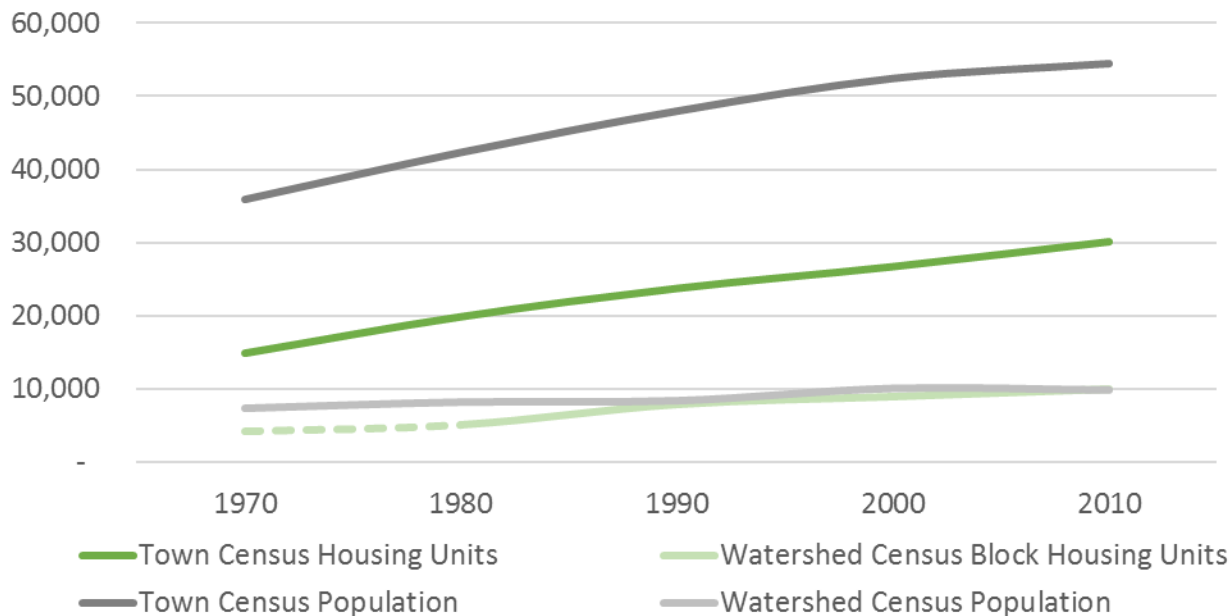


LAKE GEORGE WATERSHED DATA ATLAS



HOUSING CHARACTERISTICS:

CENSUS HOUSING UNITS & POPULATION: TOWN VS. WATERSHED



66%

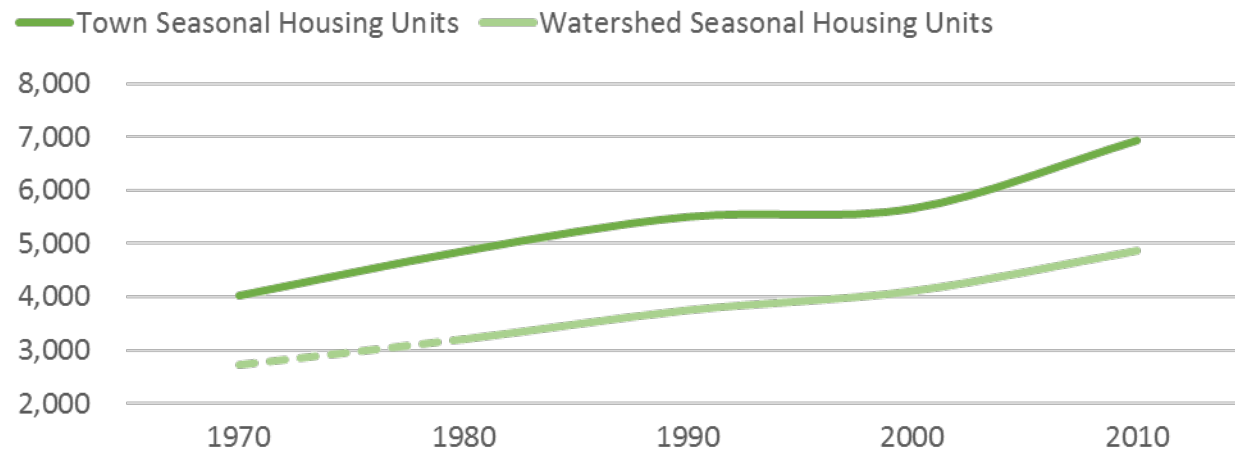
of new housing within the watershed since 1990 is within Bolton, Lake George, and Ticonderoga

LAKE GEORGE WATERSHED DATA ATLAS



SEASONAL HOUSING CHARACTERISTICS:

US CENSUS SEASONAL HOUSING: TOWN-WIDE VS. WATERSHED



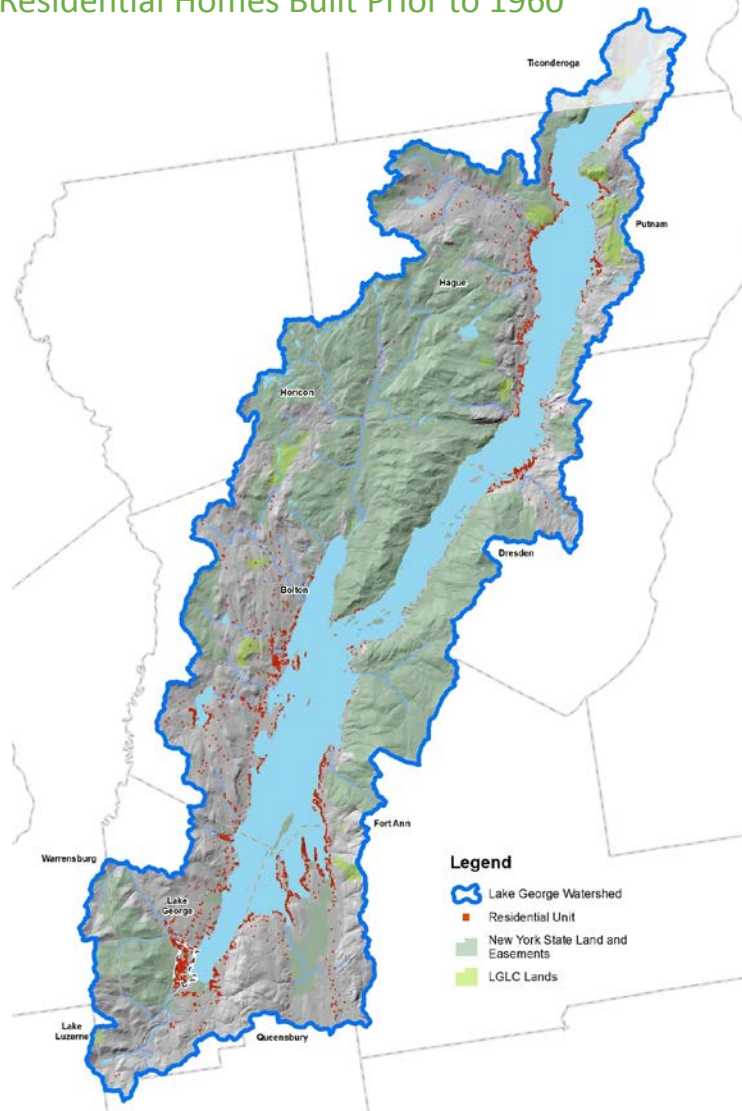
50% of housing within the Lake George watershed is seasonal and over 70% of all of the communities seasonal housing is within the watershed.



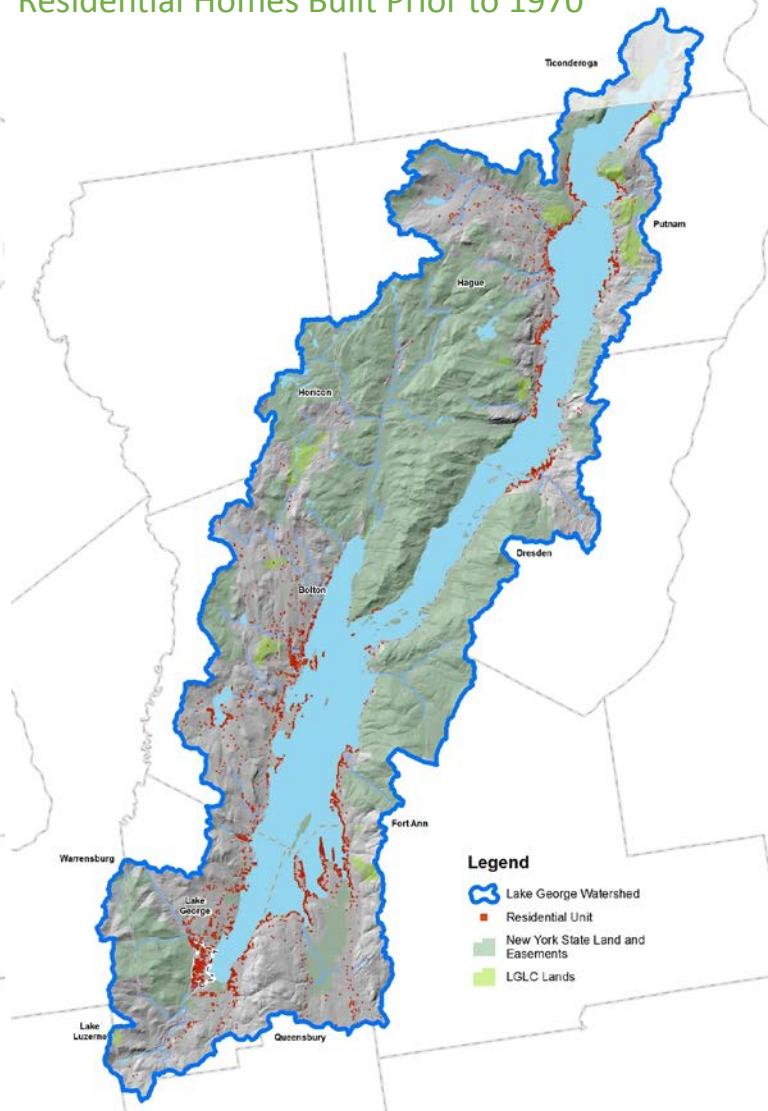
LAKE GEORGE WATERSHED DATA ATLAS

YEAR-ROUND & SEASONAL HOUSING GROWTH

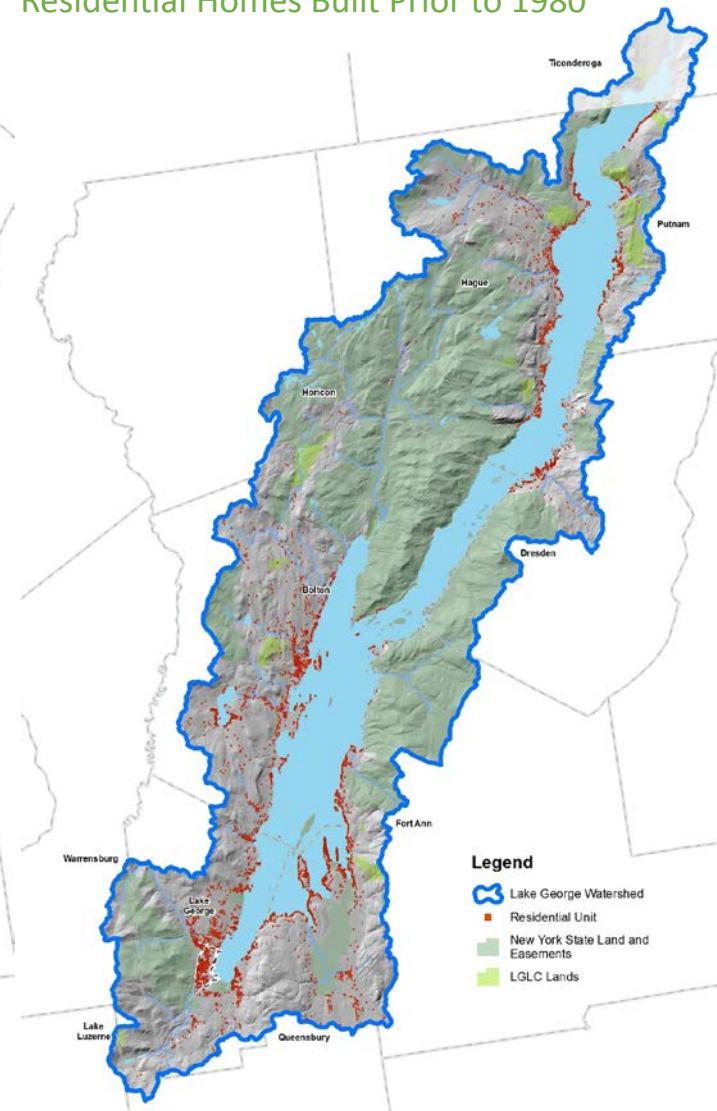
Residential Homes Built Prior to 1960



Residential Homes Built Prior to 1970



Residential Homes Built Prior to 1980

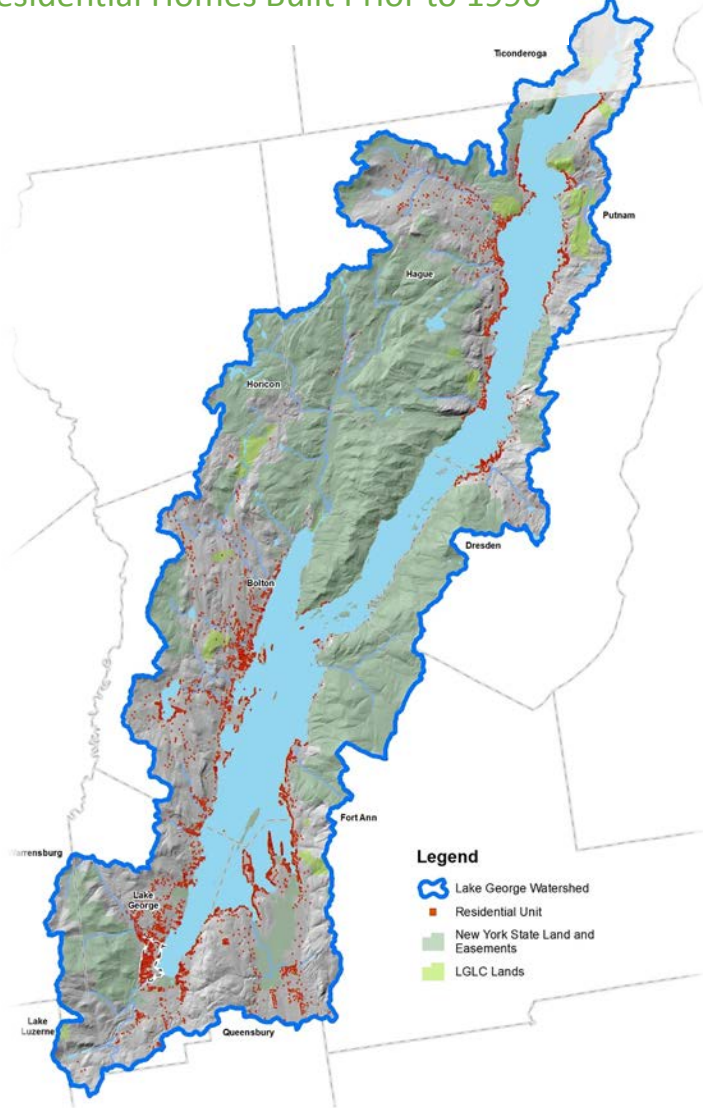




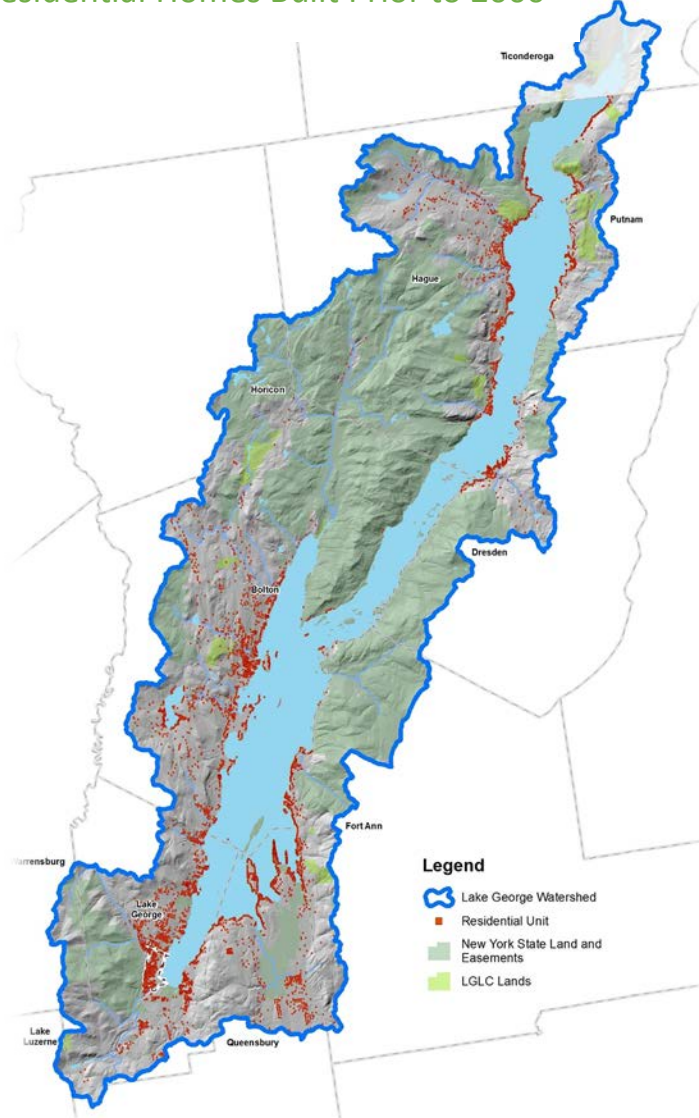
LAKE GEORGE WATERSHED DATA ATLAS

YEAR-ROUND & SEASONAL HOUSING GROWTH

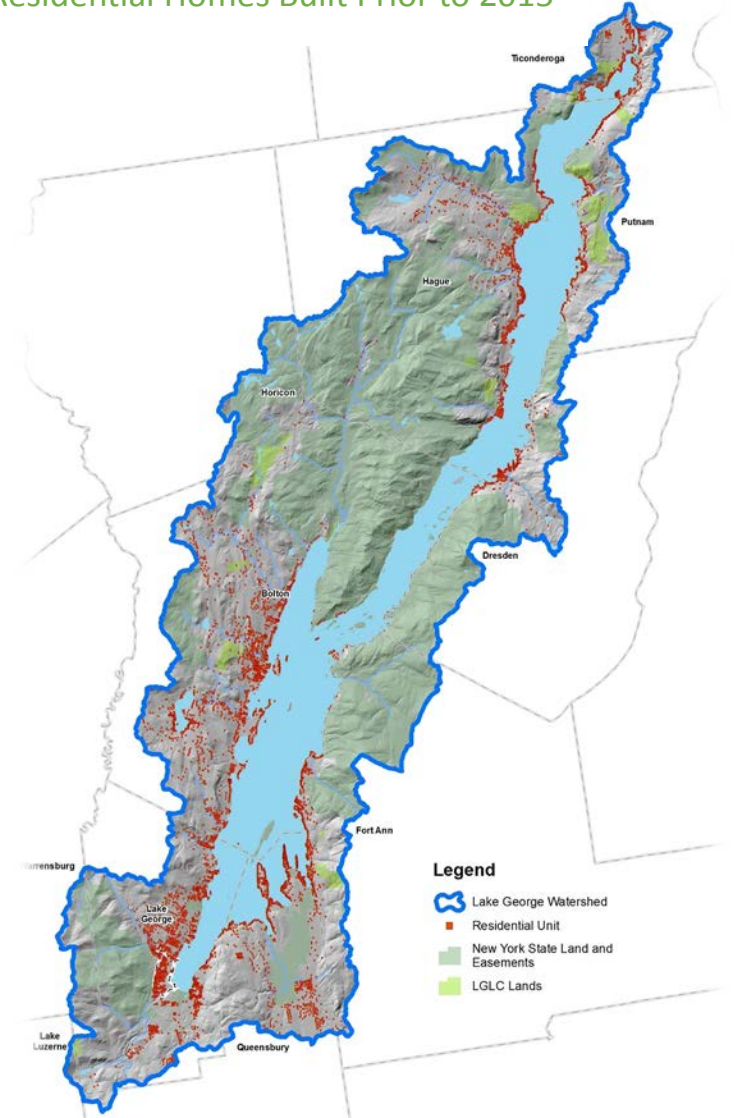
Residential Homes Built Prior to 1990



Residential Homes Built Prior to 2000



Residential Homes Built Prior to 2015



LAKE GEORGE WATERSHED DATA ATLAS



HOUSING CHARACTERISTICS:

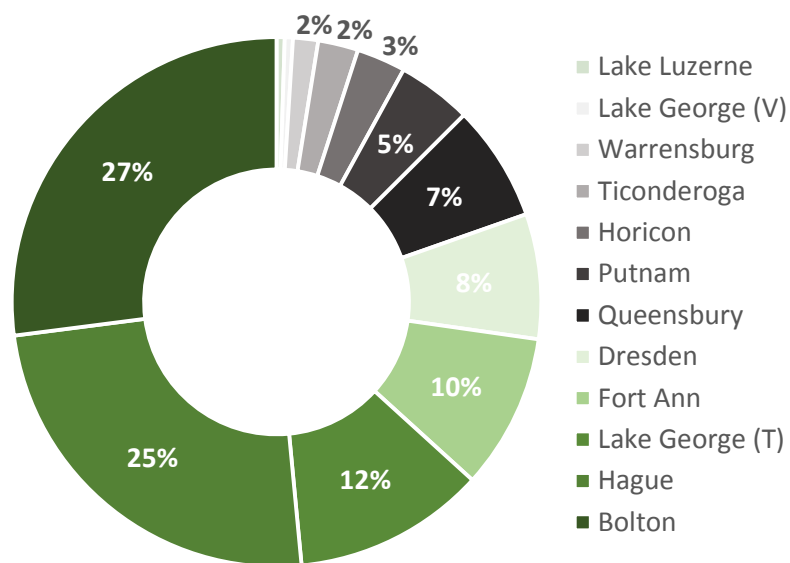


LAKE GEORGE WATERSHED DATA ATLAS

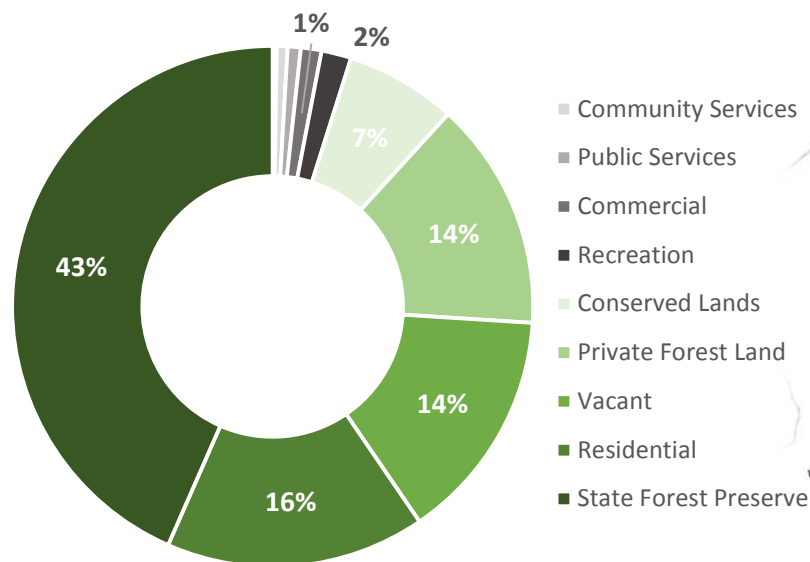


LAND USE CHARACTERISTICS:

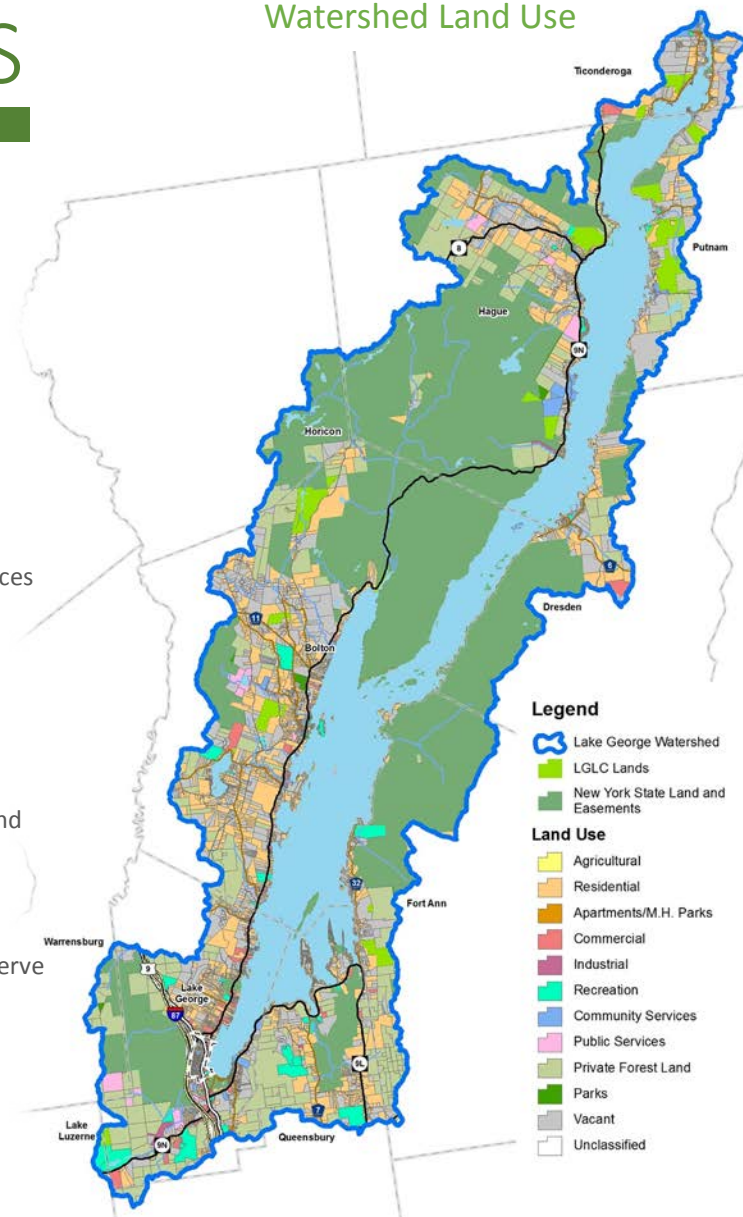
MUNICIPAL PORTIONS OF WATERSHED (ACRES)



WATERSHED LAND USE



Watershed Land Use



LAKE GEORGE WATERSHED DATA ATLAS



LAND USE CHARACTERISTICS:

REPRESENTATIVE LAND COVER TYPES



BUILT OR
HARDSCAPE

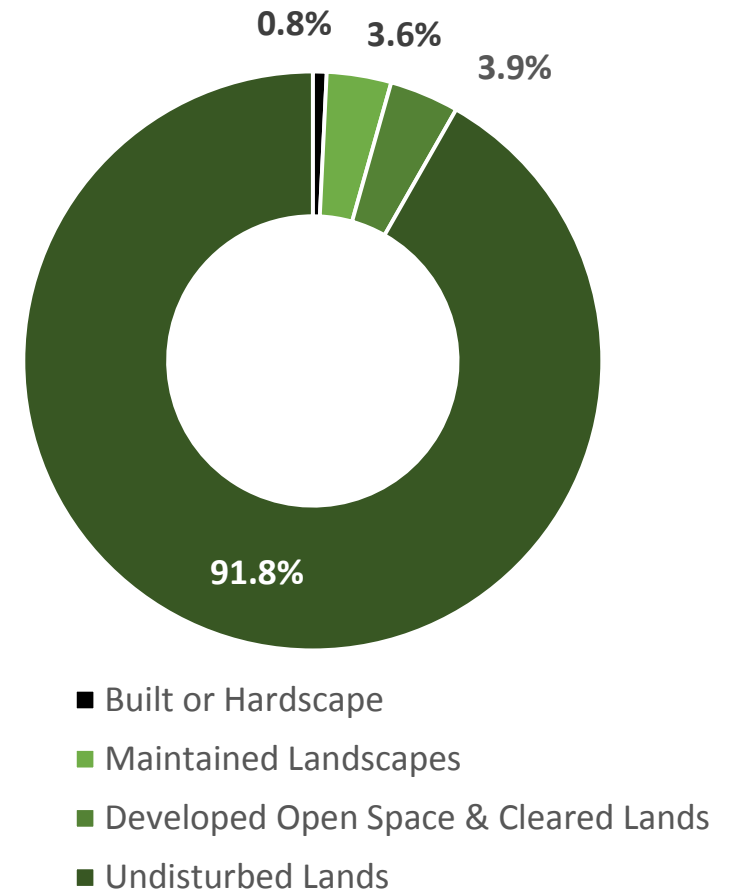


MAINTAINED
LANDSCAPES



DEVELOPED OPEN SPACE
& CLEARED LANDS

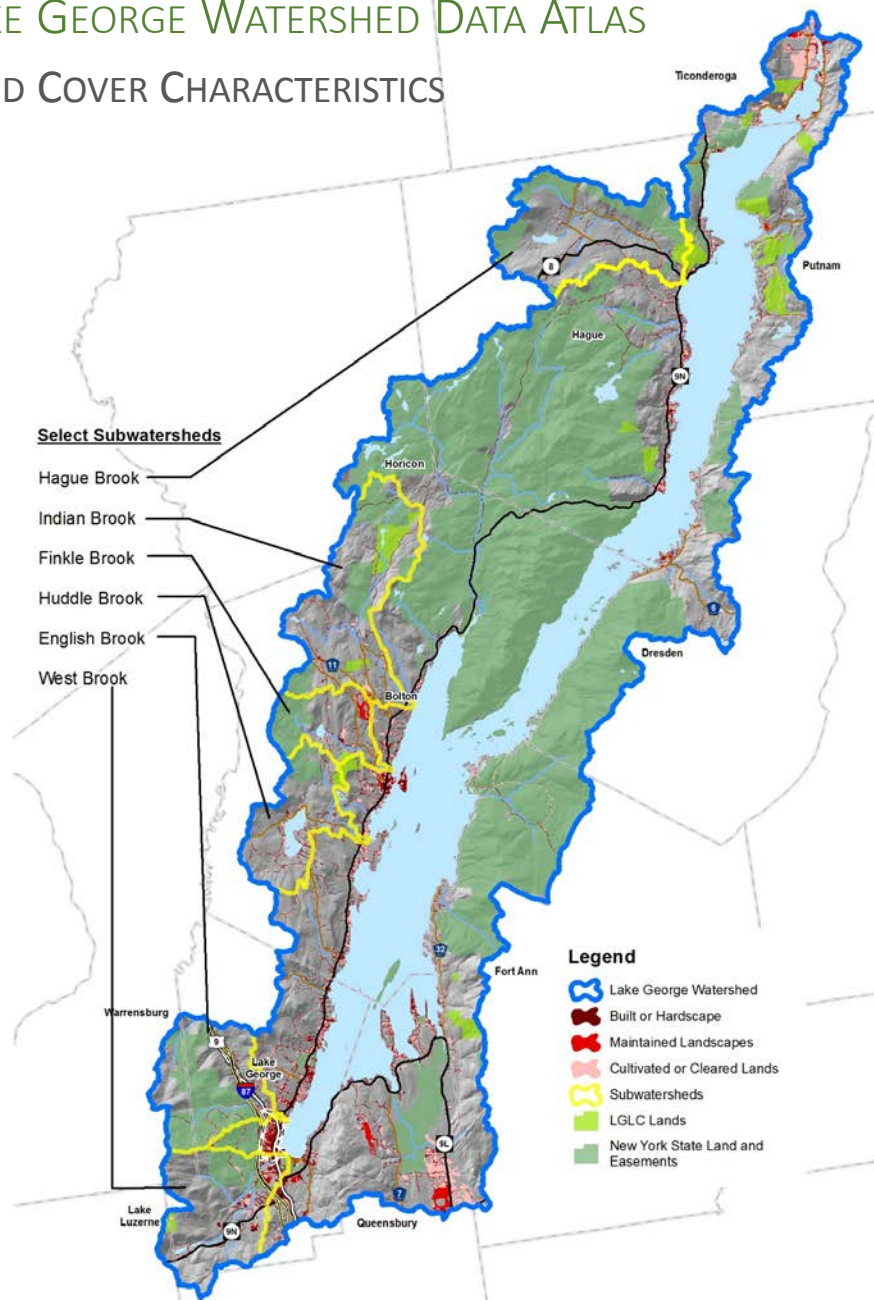
IMAGE SOURCE: GOOGLE EARTH





LAKE GEORGE WATERSHED DATA ATLAS

LAND COVER CHARACTERISTICS



PERCENT (%) BUILT OR HARDSCAPE LAND COVER BY SUBWATERSHED :

- WEST BROOK - 5.5%
- ENGLISH BROOK - 4%
- HUDDLE BROOK - 4%
- FINKLE BROOK - 3.9%
- INDIAN BROOK - 2.8%
- HAGUE BROOK - 4.5%

LAKE GEORGE WATERSHED DATA ATLAS



LAND USE CHARACTERISTICS:

LAKE GEORGE WATERSHED COMMUNITIES: SELECTED ZONING & LAND USE CONTROLS¹

| | Conservation or Cluster Provisions | Ridgeline or Slope Provisions | Tree Clearing Provisions | Shoreline provisions | Visual Quality Provisions | Local Stormwater Provisions ² | Stream Protection Provisions |
|-----------------|------------------------------------|-------------------------------|--------------------------|----------------------|---------------------------|--|------------------------------|
| Bolton | ◆■ | ◆● | ◆ | ◆ | ● | ★ | ◆■ |
| Dresden | | | | | | | |
| Fort Ann | | | ●■ | | | ●■ | ■ |
| (T) Lake George | ◆■ | ◆●■ | ◆●■ | ◆● | ◆●■ | ◆● | ◆● |
| (V) Lake George | | ◆ | ◆● | ◆ | ◆ | ◆● | |
| Hague | ■ | ● | ◆ | ◆■ | ◆● | ● | ◆ |
| Horicon | ◆ | | ◆ | ◆ | ◆ | ◆ | ◆ |
| Lake Luzerne | ◆ | ◆ | ◆ | ◆ | ◆● | ◆● | |
| Putnam | ■ | | | ●■ | ● | ● | |
| Queensbury | ◆■ | ◆●■ | ◆■ | ◆■ | ◆● | ★◆● | ◆● |
| Ticonderoga | | | | ◆■ | ● | | |
| Warrensburg | ■ | ■ | ◆ | ◆■ | ◆●■ | ● | ■ |

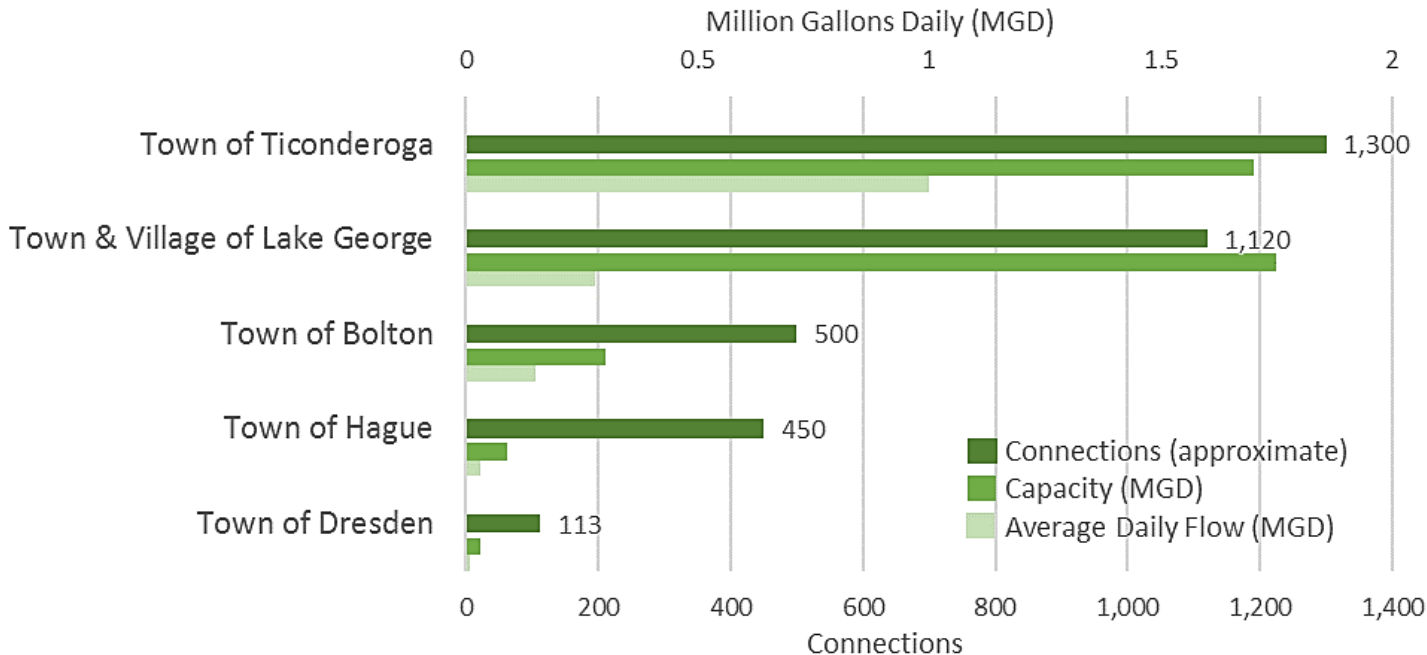
◆: Regulated by Zoning; ●: Regulated by Site Plan Review; ■: Regulated by Subdivision; ★: Regulated by Other Municipal Code

LAKE GEORGE WATERSHED DATA ATLAS



INFRASTRUCTURE CHARACTERISTICS:

SEWER DISTRICTS: CONNECTIONS, FLOWRATES, & CAPACITY



5,900 PLUS ONSITE
WASTEWATER

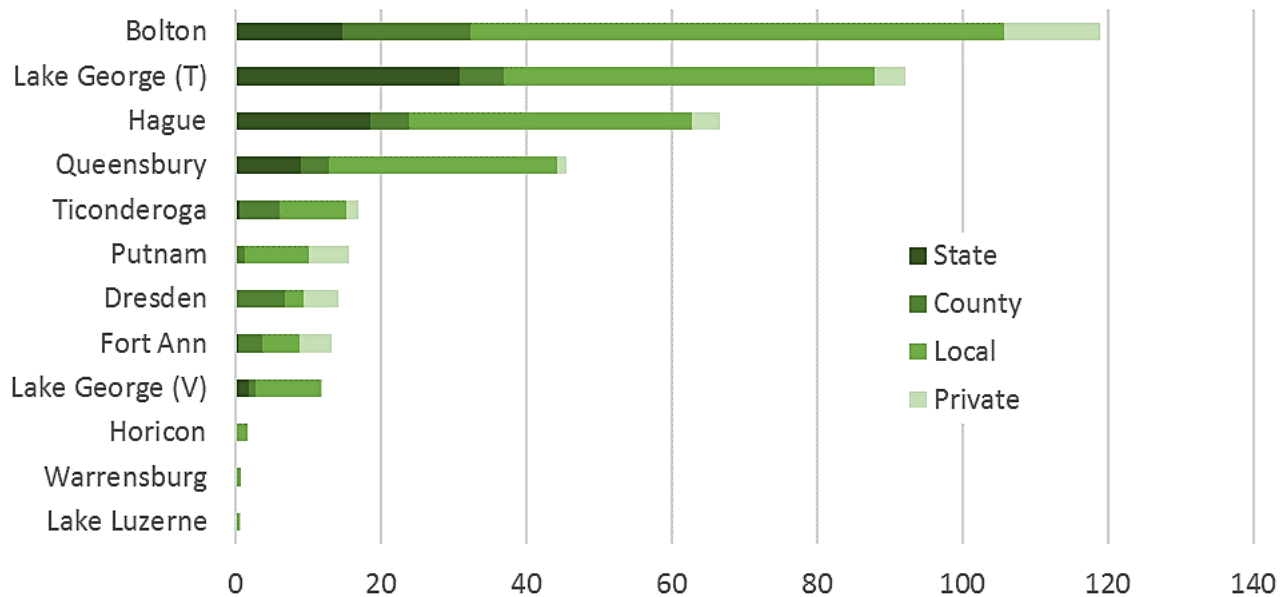
Systems within the watershed.
Bolton, Lake George, and
Queensbury have the most.
The age and type of systems
vary.

LAKE GEORGE WATERSHED DATA ATLAS



INFRASTRUCTURE CHARACTERISTICS:

WATERSHED ROADWAY NETWORK: MILES OF ROADS BY TYPE



~3,000

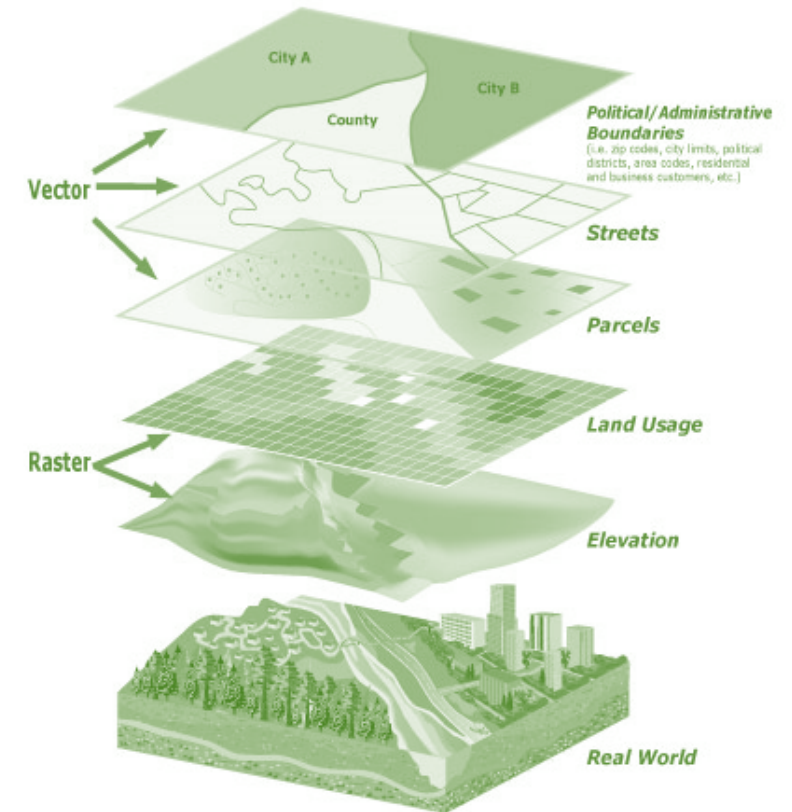
acres of roadway surface
in the Lake George
watershed (largely paved).

LAKE GEORGE WATERSHED DATA ATLAS



BUILDOUT ANALYSIS GIS MODELING

- ENVIRONMENTAL RESOURCES
- LOCAL ZONING
- APA REGULATIONS
- STATE & FEDERAL REQUIREMENTS
- PARCEL CONFIGURATION & DEVELOPMENT CONSIDERATIONS/PRACTICES



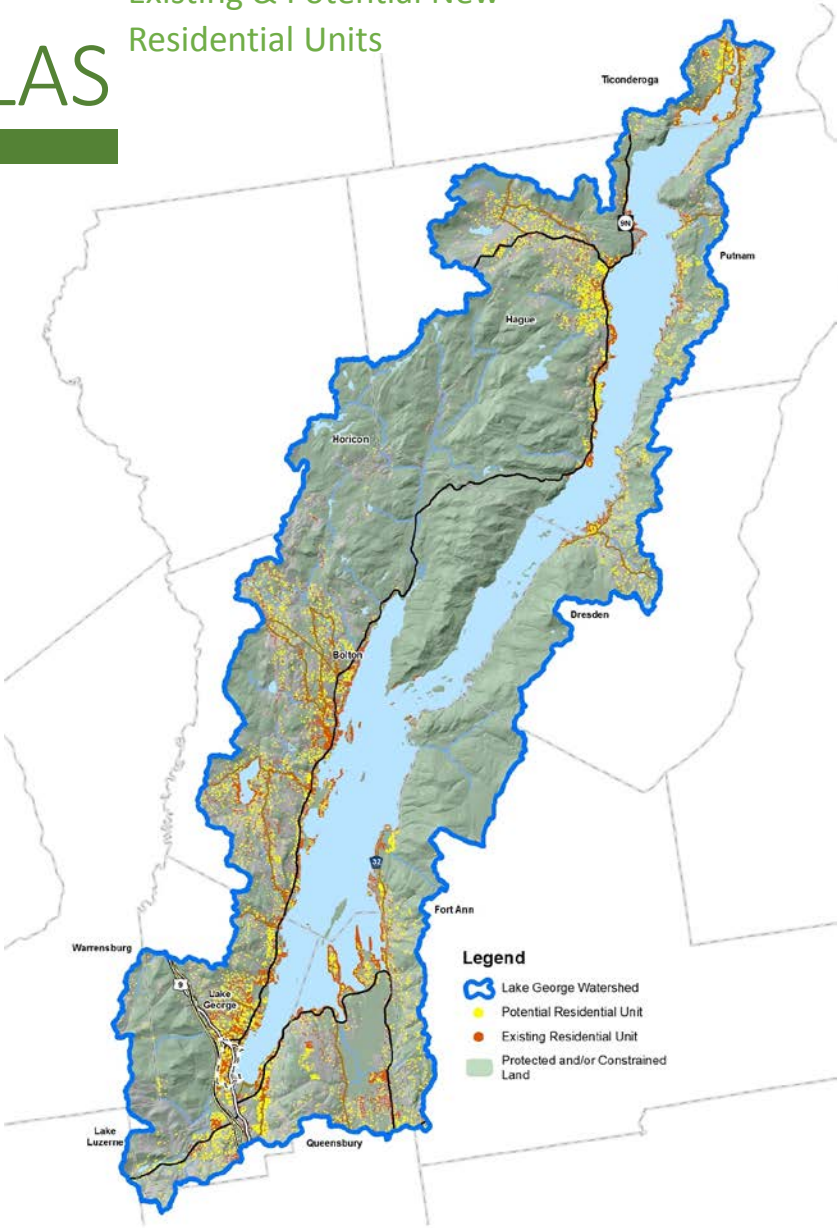
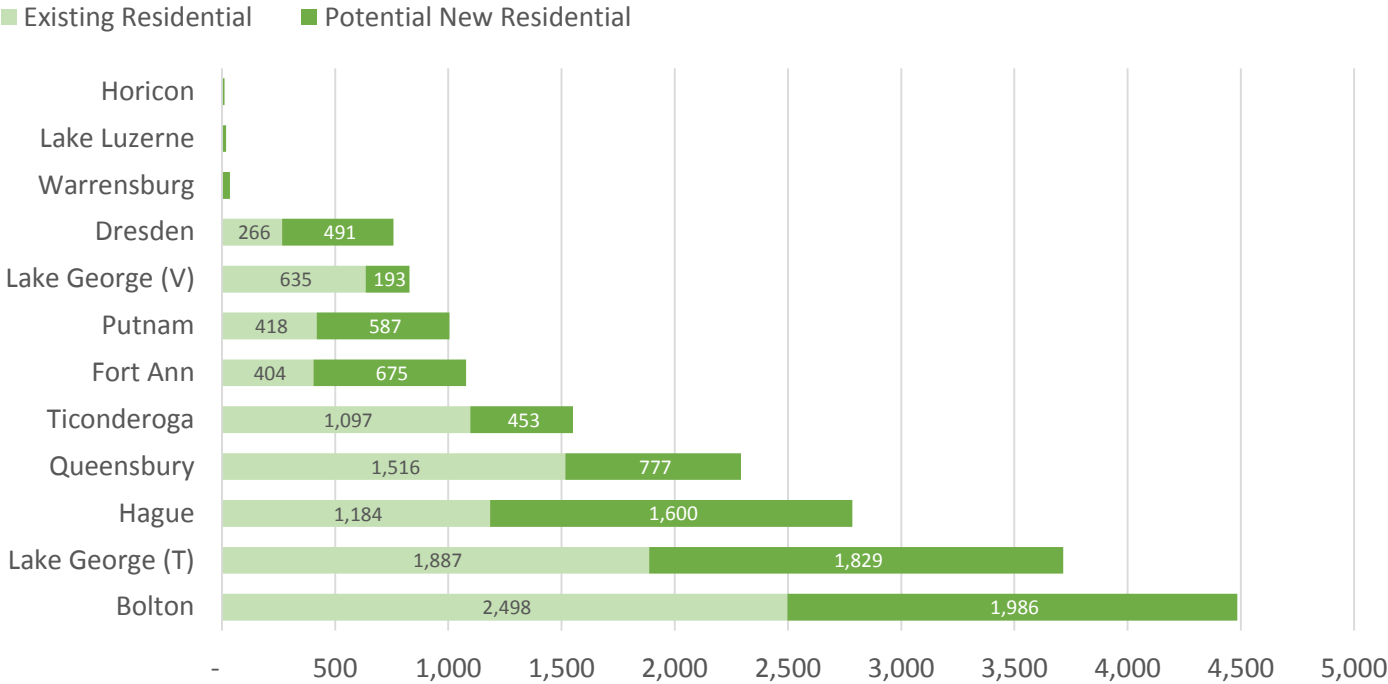
LAKE GEORGE WATERSHED DATA ATLAS

Existing & Potential New
Residential Units

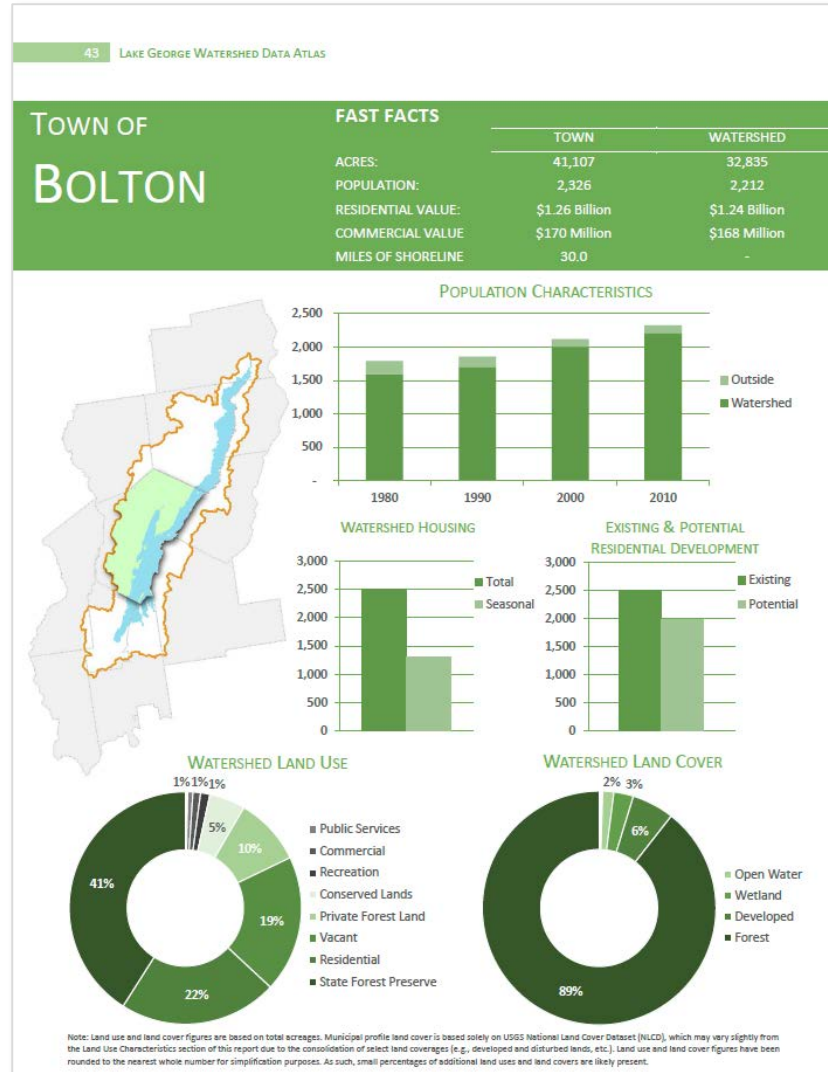


BUILDOUT ANALYSIS:

EXISTING & POTENTIAL NEW RESIDENTIAL UNITS IN WATERSHED



LAKE GEORGE WATERSHED DATA ATLAS



LAKE GEORGE WATERSHED DATA ATLAS

August 19, 2016



LAKE GEORGE ASSOCIATION
Protecting Our Water. Educating for the Future.

— SINCE 1885 —