

COVID-19 Updates

July 23, 2021

Local Situation Update

Metrics *Beyond the Blueprint*



LIVE WELL
SAN DIEGO

Date Updated	Dates of Interest for Analyses	Case Rate per 100,000*	Testing Positivity Percentage	Health Equity Testing Positivity Percentage	Testing Rate per 100,000
6/8/2021	5/23 – 5/29	1.9	1.1%	1.3%	409.5
6/15/2021	5/30 – 6/5	1.9	1.1%	1.2%	367.1
6/23/2021	6/6 – 6/12	1.6	0.9%	1.0%	256.4
6/30/2021	6/13-6/19	2.1	1.1%	1.4%	212.5
7/7/2021	6/20-6/26	2.5	1.5%	1.9%	194.5
7/14/2021	6/27-7/3	3.7	2.0%	2.5%	185.9
7/21/2021	7/4-7/10	7.6	4.1%	4.0%	172.9

Data are preliminary and subject to change.

*Previously referred to as the unadjusted case rate under the Blueprint for a Safer Economy Tier Framework.

All metrics calculated using local data using a 7-day daily average with a 7-day lag; case rate uses illness onset date and testing metrics use specimen collection date. California Department of Finance 2020 Projection Population Estimate for San Diego County is 3,370,418.

Prepared by County of San Diego, Emergency Operations Center, 7/21/2021

Triggers Dashboard

Date Updated: July 21, 2021



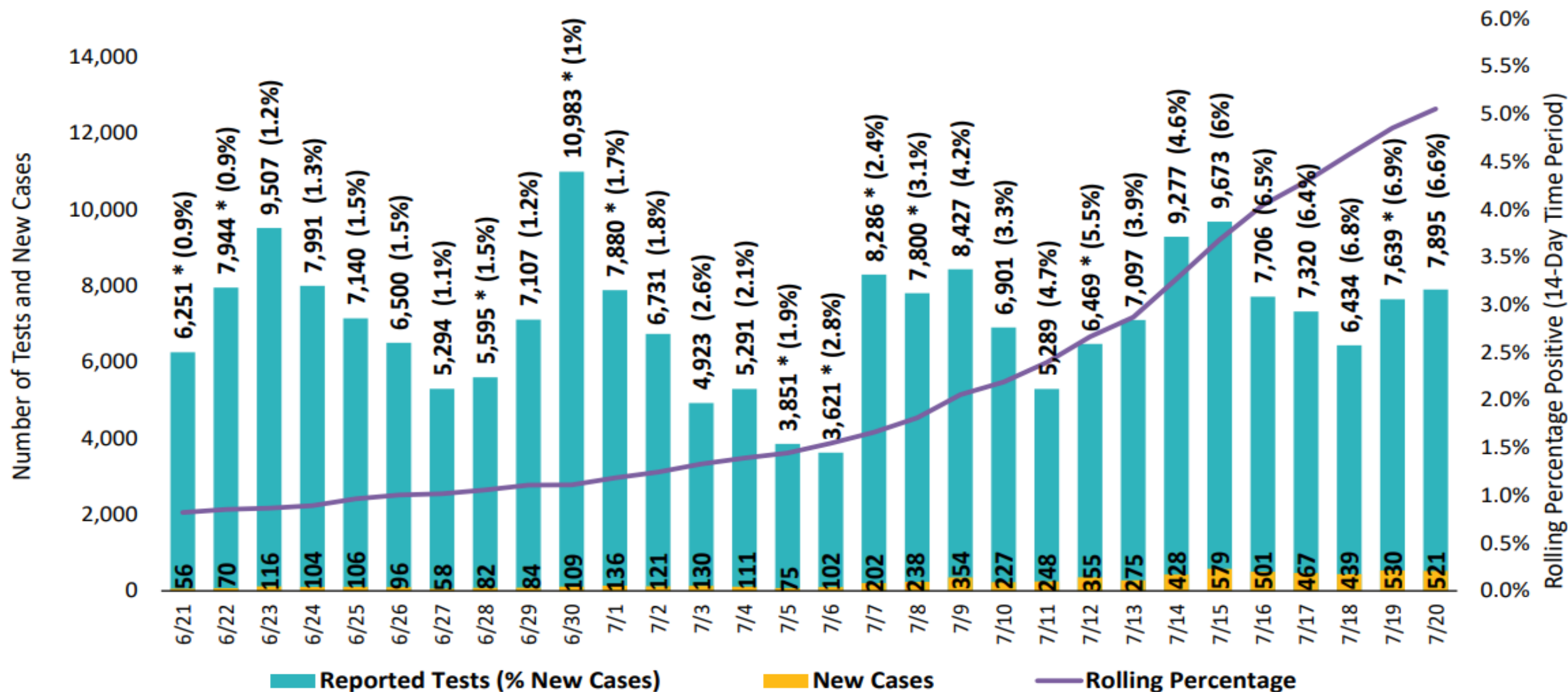
LIVE WELL
SAN DIEGO

Epidemiology (Surveillance)	Healthcare (Hospital Capacity)	Public Health (Response)
1. Case Rate (≥ 2.0)[§] 7.6	5. Hospital Capacity (80%+) 77%	10. Testing Positivity (8%+) (7-day period with a 7-day lag) 4.1%
2. Community Outbreaks* (>7) (Last 7 days: 7/14/2021 – 7/20/2021) 22	6. Increasing Hospitalizations (>10%)[†] 20.8%	11. Case Investigation ($\leq 70\%$) 40.7%
3. COVID-19 Syndromic (upward) 2.4%	7. ICU Capacity* (<20%) 29%	12. Contact Tracing ($\leq 70\%$) 97.7%
4. Influenza-Like Illness (upward) 2.8%	8. Limited Ventilator Capacity (<25%) 61%	13. Homeless Population (<15%) 33%
	9. PPE Supply* ($\leq 50\%$) 98%	

*Health Officer Order will be modified when any of the following three criteria are met: 2. Community Outbreaks, 7. ICU Capacity, 9. PPE Supply, or one or more of the remaining criteria in at least two of the three categories is met: Epidemiology (Surveillance), Healthcare (Hospital Capacity), Public Health (Response) § Calculated weekly; not adjusted for testing rates; prior to 6/23/21 trigger 1 was the adjusted case rate per CDPH Blueprint. †Calculated by the State.

Percentage of Positive COVID-19 Cases Among Tests by Date Reported

Total Number of Cases = 288,681



Data are preliminary and subject to change. *Received batch of prior tests. 14-Day rolling percentage positive = cases among San Diego County residents / all tests, including San Diego County residents and non-residents. Total number of tests = 5,422,365; 7/20/2021 rolling average = 5.1%.

Prepared by County of San Diego, Emergency Operations Center, 7/21/2021

COVID-19 Cases by Date Reported

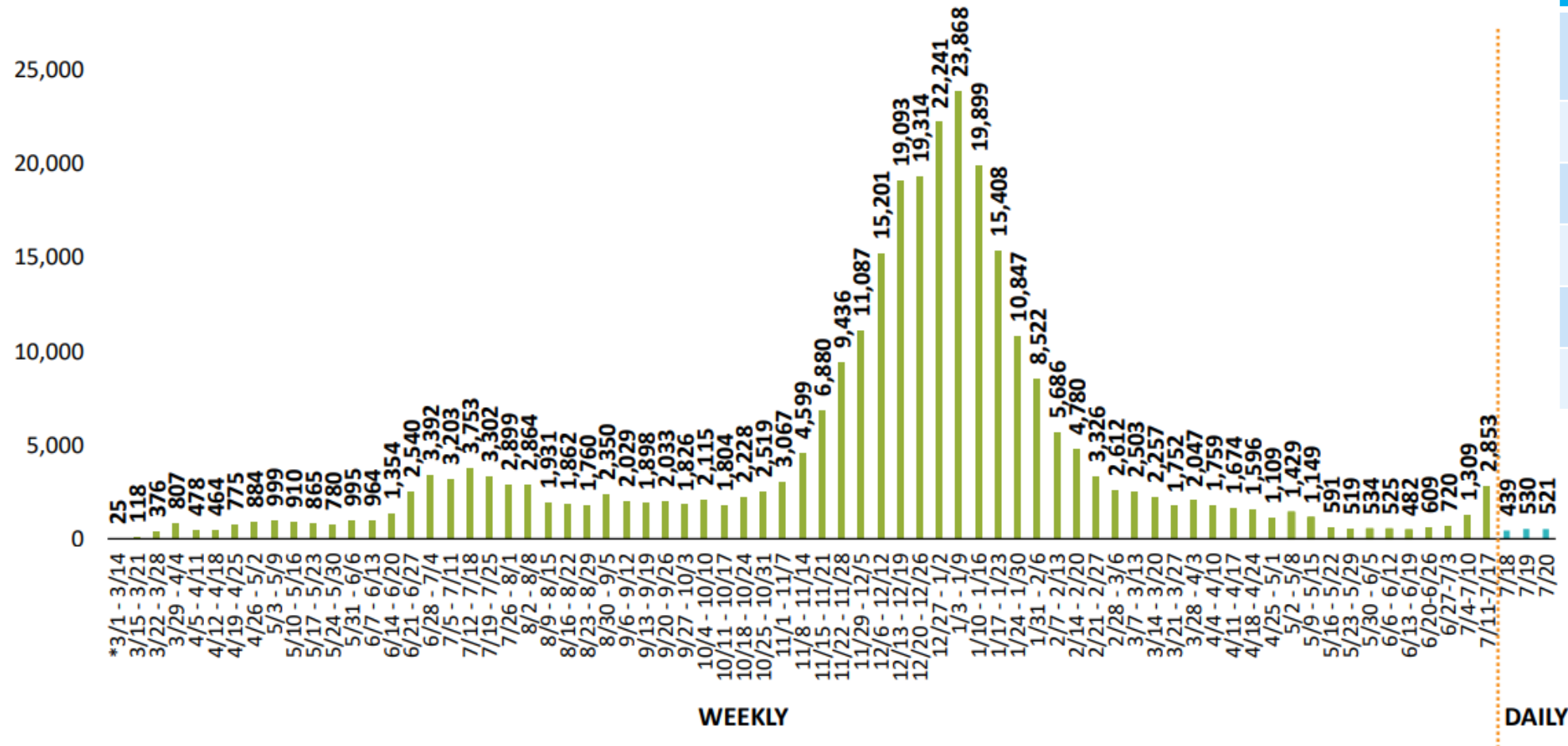


LIVE WELL
SAN DIEGO

COVID-19 Cases Among San Diego County Residents

New Cases by Date Reported

Total Number of Cases = 288,681



Week	New Cases
7/18 – 7/24	Projected 3,862
7/11 – 7/18	2,853
7/4 – 7/10	1,309
6/27 – 7/3	720
6/20 – 6/26	609
6/13 – 6/19	498

Follow-up

Possible consequences associated with failing or refusing to implement required guidance

May involve significant risks and expose districts to liability

- Failing or refusing to implement and enforce state guidance could result in a **loss of coverage** for liability claims related to COVID-19
- Willfully refusing to implement mandated COVID-19 prevention measures could **negate the immunity** that may be granted to a public entity, and **increase liability for damages**
- Agencies that fail to or refuse to enact requirements issued by the CDPH can also be cited by Cal/OSHA for **violations related to employee safety**
- Health and Safety Code Section 120295, provides that anyone who fails to comply with local health orders may be subject to a **misdemeanor, fines, and/or imprisonment**

School leaders should **consult with legal counsel** before considering any departure from state or local requirements

Does the indoors mask mandate for schools apply to school board meetings?

- The **K-12 school guidance does not apply** to school board meetings
 - Board meetings are considered to be an **indoor public settings**
 - People who are **not fully vaccinated are required to wear masks**
- Businesses, venue operators or **hosts may choose** to:
 - **Provide information to all** attendees regarding vaccination requirements and **allow vaccinated individuals to self-attest** that they are fully vaccinated or meet an approved masking exemption prior to entry.
 - **Implement vaccine verification** to determine whether individuals are required to wear a mask.
 - **Require all patrons to wear masks.**

Order on quarantine updated

An update to paragraph 2(c) of the order has been made to authorize the new options for quarantine:

Exceptions and unique guidance may apply for individuals living, working, or attending school in certain settings. Review the following documents for more information:

COVID-19 SCHOOL SYMPTOM SCREENING FLOWCHART

Individual (vaccinated and unvaccinated) with one or more symptoms associated with COVID-19

Had close contact* (within 6 feet for a total of 15 minutes or more) with a person who has COVID-19?

YES

NO

For asymptomatic close contacts, use the quarantine options on page 2.

Does the individual have a documented pre-existing chronic condition that accounts for the symptoms?

NO

YES

Results of COVID-19 testing?

Negative or No Test Result

Positive Test Result

See "appropriate test type" on page 4

Positive or No Test Result

Negative Molecular Test

Does the individual have a fever or feel too ill to return to class?

YES

NO

Instruct the student to...

Return Day 11 if symptoms improved + 24 hours without fever or use of fever reducing medicines. From Day 11 thru 14, return to school using modified quarantine (see next page).

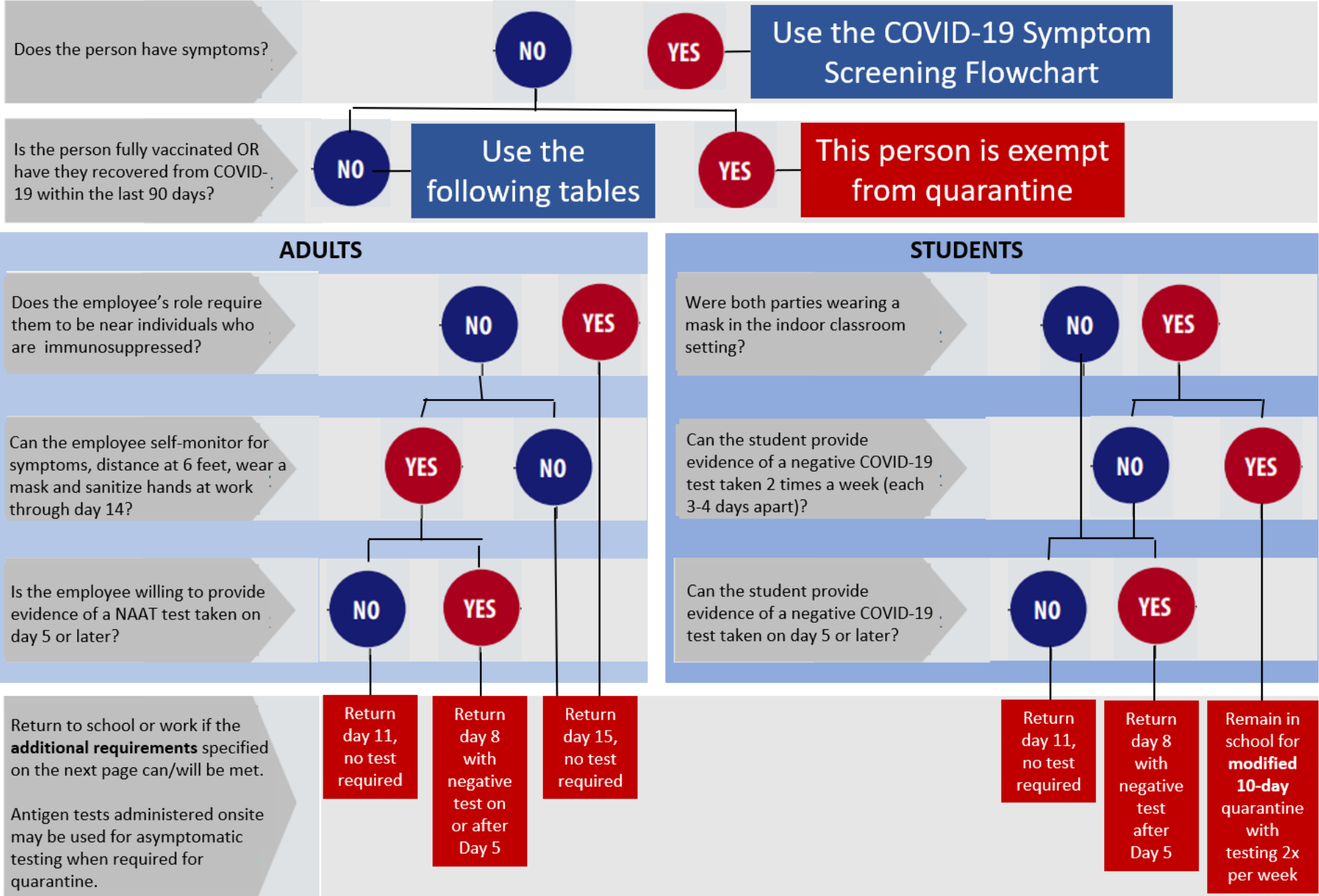
Stay home for at least 10 days after symptom onset + symptoms have improved + 24 hours without fever and no use of fever reducing medicine

Stay home until symptoms have improved according to existing school policy, typically 24 hours without fever and no use of fever reducing medicine

Allow to return to class or work

We've asked the CDPH if this is permissible.

Quarantine Options Flowchart



When is quarantine required?

Quarantine or isolation: What's the difference?

- **Quarantine** keeps someone who might have been exposed to the virus away from others.
- **Isolation** keeps someone who is infected with the virus away from others, even in their home.

Who needs to quarantine?

People who have been in [close contact](#) with someone who has COVID-19—excluding people who have had COVID-19 within the past 3 months or [who are fully vaccinated](#).

- People who have tested positive for COVID-19 within the past 3 months and recovered do not have to quarantine or get tested again as long as they do not develop new symptoms.
 - People who develop symptoms again within 3 months of their first bout of COVID-19 should follow their doctor's advice on testing.
- People who have been in close contact with someone who has COVID-19 are not required to quarantine if they have been [fully vaccinated](#) against the disease and show no symptoms.

What counts as [close contact](#)?

- Being within 6 feet of someone who has COVID-19 for a total of 15 minutes or more over a 24-hour period
- Providing care at home to someone who is sick with COVID-19
- Having direct physical contact with the person (hugged or kissed them)
- Sharing eating or drinking utensils
- Being sneezed on, coughed on, or somehow getting respiratory droplets on you from someone with COVID-19

Requirements for return to school or work before completing 14 days of quarantine:

If symptoms occur, the individual should immediately self-isolate and contact their healthcare provider or San Diego County Public Health Services and seek testing.

STUDENTS

- **Modified 10-day** (remain in school): Must undergo twice weekly testing (each test 3 or 4 days apart) and continue to quarantine for (i.e., do not participate in) all extracurricular activities at school, including sports, and activities within the community setting thru Day 10.
- **Return on Day 8:** Provide evidence that a diagnostic specimen is collected on Day 6 (or later) from the date of last exposure is negative.
- **Return on Day 11** is permitted without testing
- **Additional Requirements:** In addition, for all options that allow a return to in-person instruction before Day 14 the student must continue daily self-monitoring for symptoms through Day 14 from last known exposure; AND follow all recommended non-pharmaceutical interventions (e.g., wearing a mask indoors and outdoors when others are present, hand washing, avoiding crowds) through Day 14 from last known exposure.

ADULTS

- **Return on Day 15:** No additional requirements.
- **Return on Day 11:** May return if the individual is able to abide by the additional requirements described below.
- **Return on Day 8:** May return if the individual provides evidence of a negative PCR or other [Nucleic Acid Amplification Test](#) administered on or after Day 5 and is able to abide by the additional requirements described below.
- **Additional Requirements:** In addition, for all options that allow a return before Day 14, the employee must agree to self-monitor for symptoms, maintain 6 feet of physical distancing at all times, and wear a face cover over their nose and mouth as required. Staff members who would be near others who have severe immunosuppressive disorder (e.g., bone marrow or solid organ transplant, chemotherapy) must quarantine for 14 days.

Testing Options for Symptomatic People and to Modify Quarantine

Appropriate Test Types

- Molecular tests
 - Lab-based PCR
 - Rapid molecular tests (PCR-like)
- Antigen on-site (or at home as part of a state pilot)
 - In symptomatic, a negative antigen test requires molecular test (PCR, LAMP, NAAT) confirmation and individuals should isolate until test results are available.
 - If asymptomatic, a positive test requires a confirmation with a molecular test (PCR, LAMP, NAAT) and individuals should isolate until confirmatory test results are available

Population Tested

- Staff or students with symptoms, regardless of vaccination status
- Unvaccinated students or staff who are close contacts, to remain in school for a modified quarantine as described in [CDPH K-12 Guidance](#).

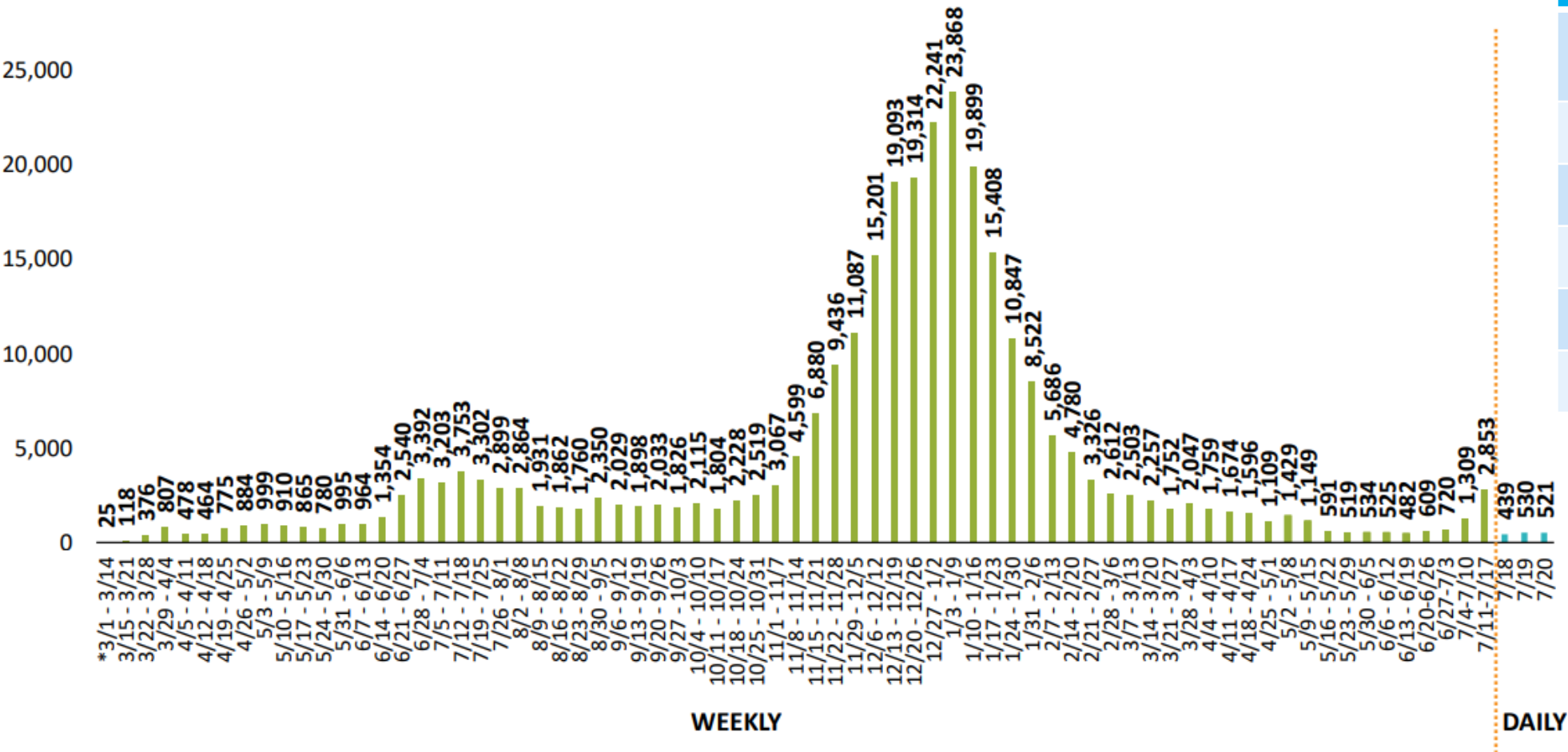
Recommendations

That no one wants to hear...

COVID-19 Cases by Date Reported



COVID-19 Cases Among San Diego County Residents New Cases by Date Reported Total Number of Cases = 288,681



Week	New Cases
7/18 – 7/24	Projected 3,862
7/11 – 7/18	2,853
7/4 – 7/10	1,309
6/27 – 7/3	720
6/20 – 6/26	609
6/13 – 6/19	498

Consider maintaining stable groupings

- The definition of close contact hasn't changed
- The number of close contacts per case will be more
 - Yesterday – 170 at one school
 - Even with the new quarantine options and onsite testing, high numbers of close contacts will overwhelm the school's ability to keep up

Stable groupings in secondary schools

Middle Schools

- Consider village schedules

High Schools

- Consider options to reduce the number of classes students take at one time
 - 1 class for 3 week term or
 - 2 classes for 6 week term

Consider additional strategies – multiple lunch periods and staggered stop/start

Implement logging systems to support contact tracing

- We have some [strategies and templates](#) that may be useful.

Consider options that allow virtual participation during quarantine/isolation

- Even with the new options for quarantine it seems likely kids are going to miss a lot of in-person attendance