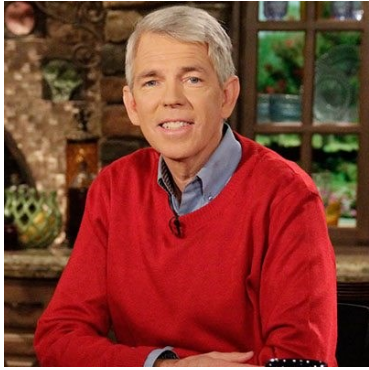


## Hear Historian David Barton of *WallBuilders* ...



**Wednesday,  
May 15, 2019**  
10:00 a.m. ♦ 2:00 p.m. ♦ 7:00 p.m.  
(three different lectures)  
**at the historic  
Fort Snelling Memorial Chapel**  
(location/directions on back)

**David Barton** is the *Founder/President* of *WallBuilders*. David is the author of numerous best-selling books, with the subjects being drawn largely from his massive library of tens of thousands of original writings from the Founding Era. His exhaustive research has rendered him an expert in historical/constitutional issues. Serving as a consultant to state/federal legislators, he has participated in several cases at the Supreme Court, was involved in the development of the History/Social Studies standards for states such as Texas and California, and has helped produce history textbooks now used in schools across America. Many of his books/videos will be available for purchase at the Chapel.

**Admission is FREE**, but to reserve your seating you **MUST R.S.V.P.** your name(s) NLT May 1st ... indicating which lectures you will be attending. General public seating will only be admitted 30-minutes prior to the lectures ... as seats are available.  
R.S.V.P. by one of these means:

E-mail: [info@fortsnellingmcf.org](mailto:info@fortsnellingmcf.org)

Phone: (952) 888-1525

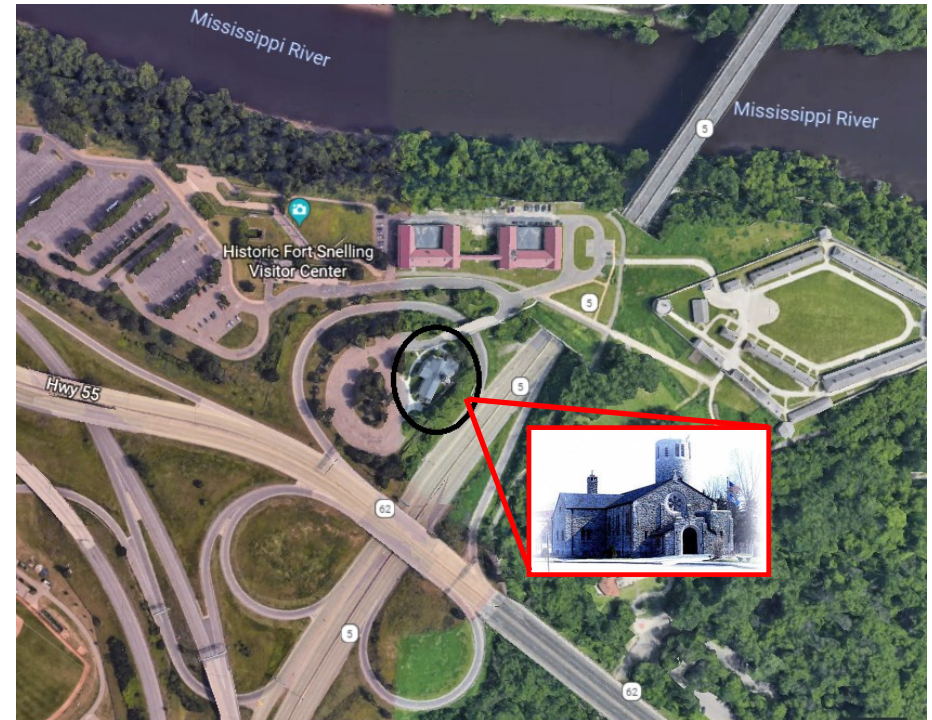
US Mail: Ft Snelling Memorial Chapel Foundation  
9031 Penn Ave S  
Bloomington, MN 55431



These spiritual heritage lectures are brought to you by auspices of the Fort Snelling Memorial Chapel Endowment Fund established to assure the FSMCF ministry into perpetuity. Tax-deductible donations leave a long-term legacy — as the principle is never spent, but interest on the investment are used for programing such as these lectures. A freewill offering will be received at the lectures.

To learn more about the Fort Snelling Memorial Chapel Foundation and their other programs, visit their website at [www.fortsnellingmcf.org](http://www.fortsnellingmcf.org)  
Or tune-in to their weekly non-denominational Christian worship via Livestream at <https://new.livestream.com/accounts/3709164>

## Directions to Ft Snelling Memorial Chapel, 1 Tower Ave, historic Ft Snelling



The Chapel is located at the intersection of Highways 5, 55 and 62. Once in this area watch for signs directing you to Historic Fort Snelling. Follow the signs and you will soon begin to see signs specifically for the Chapel.

**From the West** take Hwy 62 east straight past the exit for Hiawatha Ave (Hwy 55). Approximately 2-blocks take the right hand exit, labeled Fort Snelling Historic Site (Whipple Federal Bldg and BSA Base Camp is also at this exit). At the stop sign at the end of the exit ramp turn left, go one block to next stop sign, turn left and go under the highway to the end of this road (approximately 2-blocks) turn right. Proceed up a slight grade into a large parking lot; continue east through this lot to the Chapel. You will see signs for the Chapel along this route. Limited parking is available over the bridge adjacent to the Chapel.

**From the East** on Hwy 5 go past the airport and continue in the right hand lane to follow the signs for Minneapolis/Mendota Bridge. Do not take Mendota exit! Just beyond the Mendota exit watch for the Historic Fort Snelling/Bloomington Road exit (approximately 2-blocks) and get off (it is a right hand clover leaf exit). At the base of the exit ramp go straight through the stop sign and proceed up a slight grade into a large parking lot; continue east through this lot to the Chapel. You will see signs for the Chapel along this route. Limited parking is available over the bridge adjacent to the Chapel.

**Use this Guide to Get to the Chapel Where a Welcome Awaits You.**