

# Participate in our new study on Youth Engagement in Research

## What is the purpose?

To understand the training needs of youth and young adults with disabilities in order to adapt the current Family Engagement in Research (FER) course for youth.



### Examples of NDDs include:

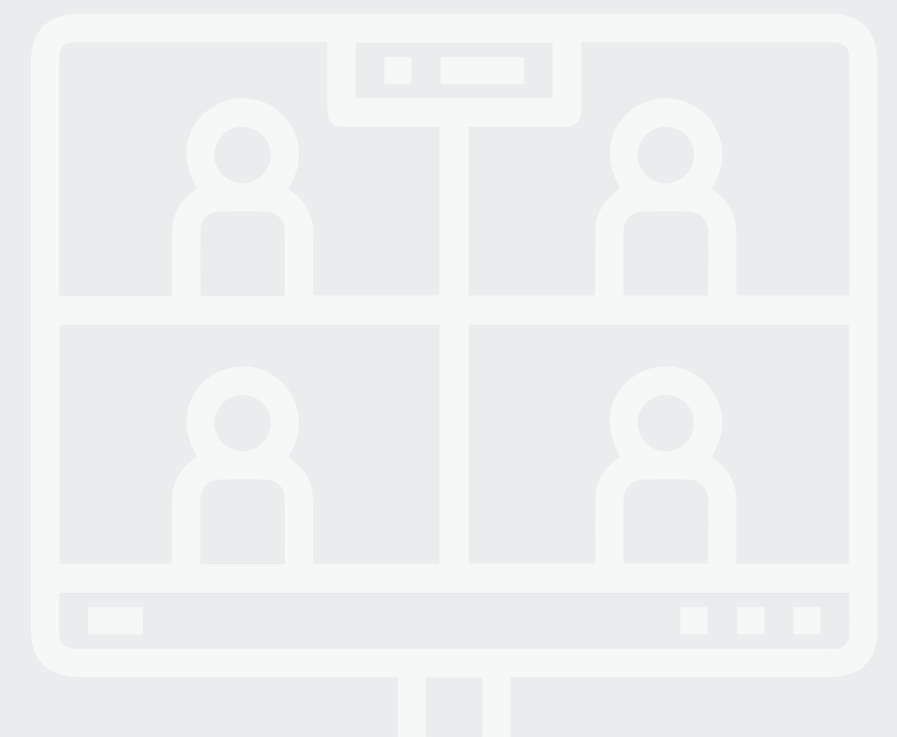
- Cerebral Palsy
- Autism Spectrum Disorder
- Attention Deficit Hyperactivity Disorder
- Other rare genetic disorder

## Who can participate?

All youth and young adults (age 12–25) with neurodevelopmental disabilities (NDD), who can communicate and understand English.

## What is your role?

You will be asked to complete a brief questionnaire and to participate in a one-hour focus group over Zoom with other youth and young adults.



## Benefits?

The study will provide you with an opportunity to express your opinions and make an impact on patient orientated research.

*You will also receive \$20 giftcard for participating.*

**TO SIGN UP OR FOR MORE INFO, PLEASE CONTACT:**



Samantha Yimeng Dong  
CanChild Centre for Disability Research  
[dongy58@mcmaster.ca](mailto:dongy58@mcmaster.ca)

