

# OLG Uniforms

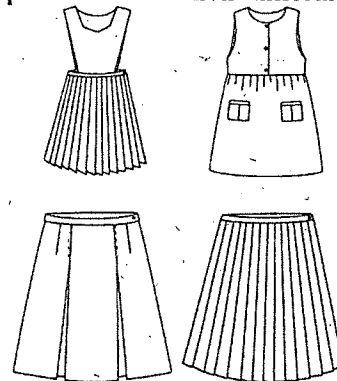
Please see the full uniform policy in the OLG handbook

OLG Code XSO245

Students are required to wear the school uniform except during pre-announced 'non-uniform' days.

## Girls Full Dress:

- White shirt
- Jumper (K-5) / Skirt (4-8) or skort
- OLG sweatshirt\* - ordered from OLG or Dennis Uniform, NOT the hoodie,
- Dennis Uniform only navy cardigan, vest or fleece vest



## Boys Full Dress:

- White shirt
- Navy Long Pants (K-5) / Navy or Gray Long Pants (6-8)
- OLG sweatshirt\* - ordered from OLG or Dennis Uniform, NOT the hoodie,
- Dennis Uniform only navy cardigan, vest or fleece vest



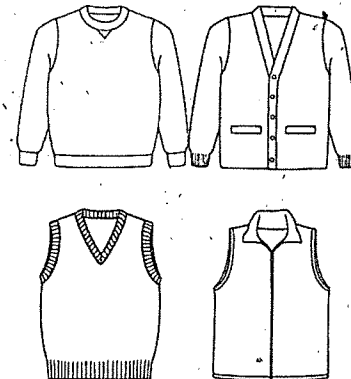
## Dress Code – Girls & Boys

### Shoes & socks:

- Solid white, gray or navy anklet socks (All)
- Knee highs, tights – solid white or navy (K-8 girls)
- Shoes designed for shoelaces w/ laces tied - no boots, clogs, sandals, or flip flops

### Solid white Shirts:

- Polo (All)
- Turtleneck (All)
- Peter pan collar - long or short sleeves (K-8 girls)
- Sport collar - long or short sleeves (K-8 girls)
- Camp shirt (6-8 girls)
- Button front broadcloth (K-8 boys)



### Pants:

- Navy blue regular wale cord or twill pants (K-5 both)
- Navy blue or gray regular wale cord or twill (6-8 both)
- Navy blue walking shorts

## Where to purchase uniforms

All items are available at the **Dennis Uniform Store**. Target, Old Navy, Lands' End, & Nordstrom carry uniform basics such as navy twill pants and white polos – just remember no logos or graphics are allowed; items must be plain.

\*OLG logo sweatshirt is preferred – this is ordered through the school.

# easy ways to shop for your uniform

OUR LADY OF GUADALUPE SCHOOL

## WELCOME TO DENNIS

We look forward to working with you this year! Since 1920, our family-owned company has provided top schools nationwide with high-quality uniforms, many of which are hand-sewn in our Portland, Oregon factory. If you need any help, our National Customer Service Department is just a phone call away: 800.854.6951



### SHOP ONLINE

[www.dennisuniform.com](http://www.dennisuniform.com)

Enter your school code:

XS0245

Or scan QR code:



### ORDER BY PHONE

National Customer Service:

**800.854.6951**

Hours (Pacific Time):

Mon-Fri 8am - 5pm

Extended hours in July and August

### ORDER BY MAIL OR FAX

FAX: 877.291.5480

135 SE Hawthorne Boulevard

Portland, OR 97214

Order forms available online.



**DENNIS**  
UNIFORM

— SINCE 1920 —