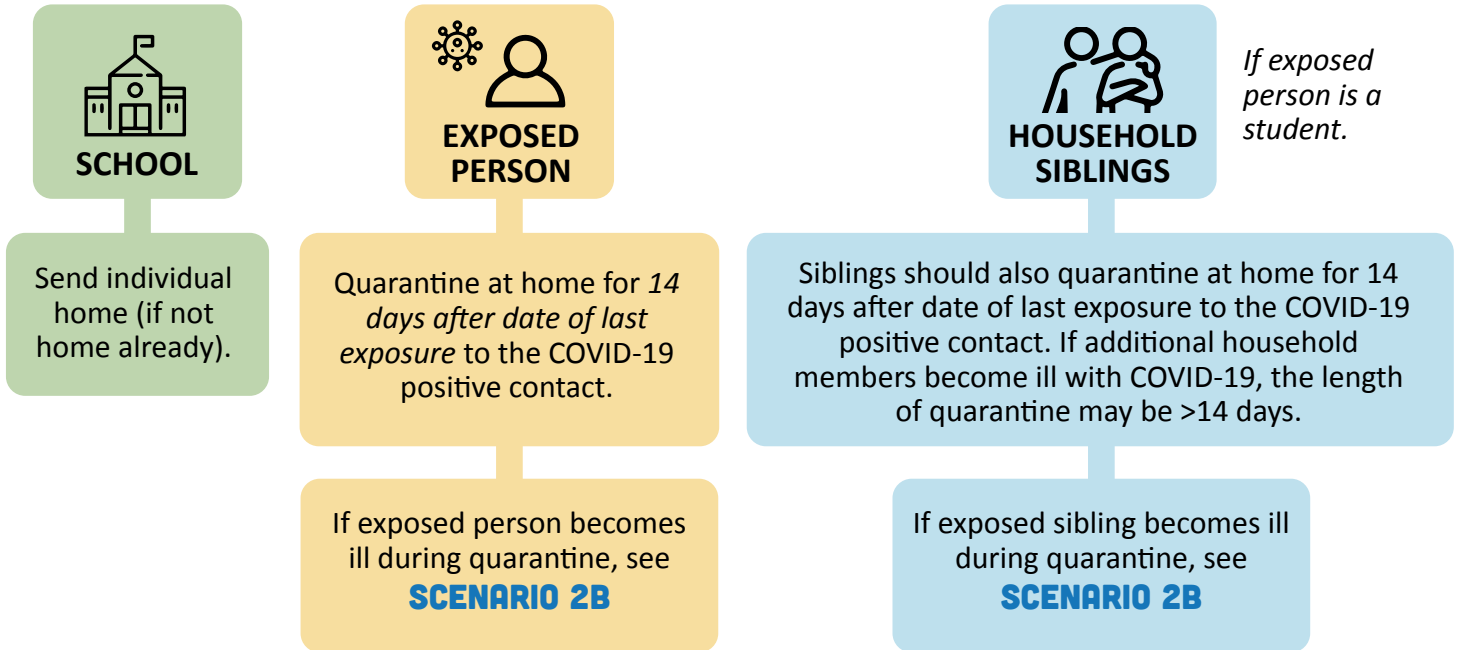


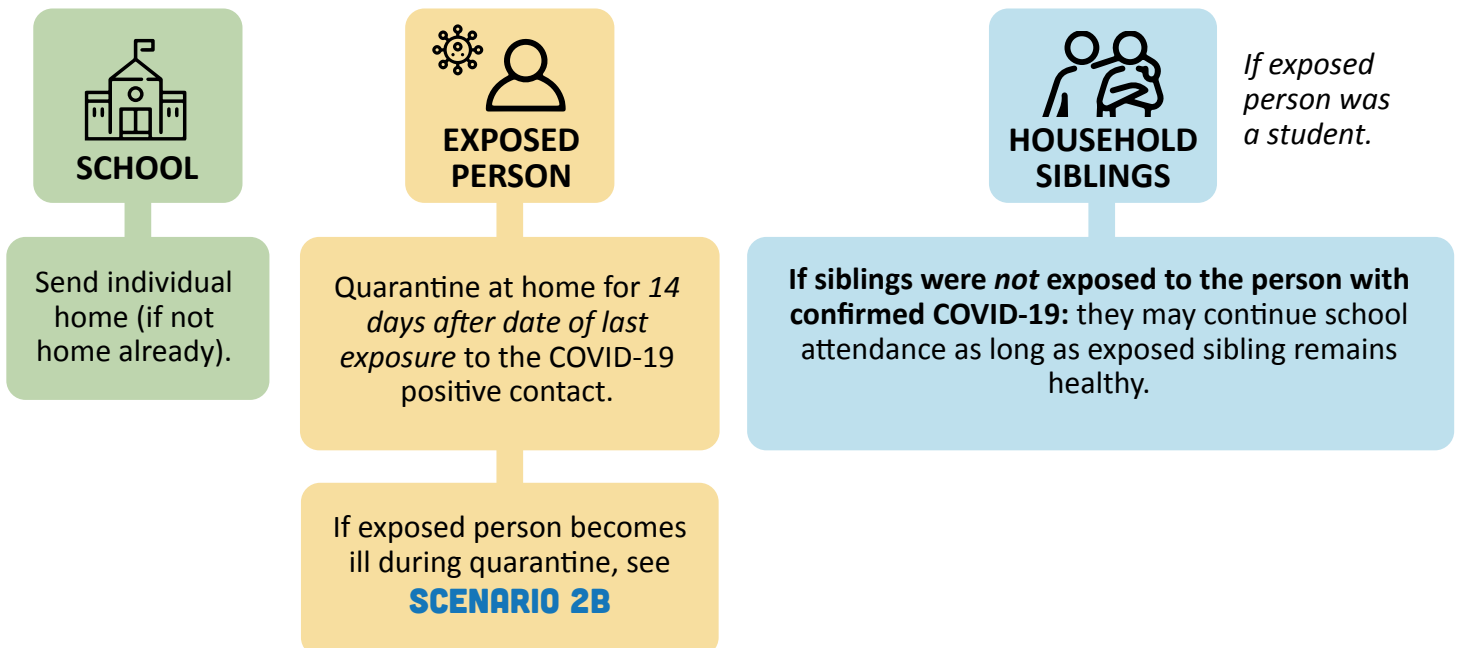
1. SCHOOL SCENARIOS

HOW TO HANDLE EXPOSURE TO COVID-19

SCENARIO 1A. A HEALTHY STUDENT OR STAFF MEMBER HAS BEEN EXPOSED TO A PERSON WITH CONFIRMED COVID-19 WITHIN THEIR HOUSEHOLD



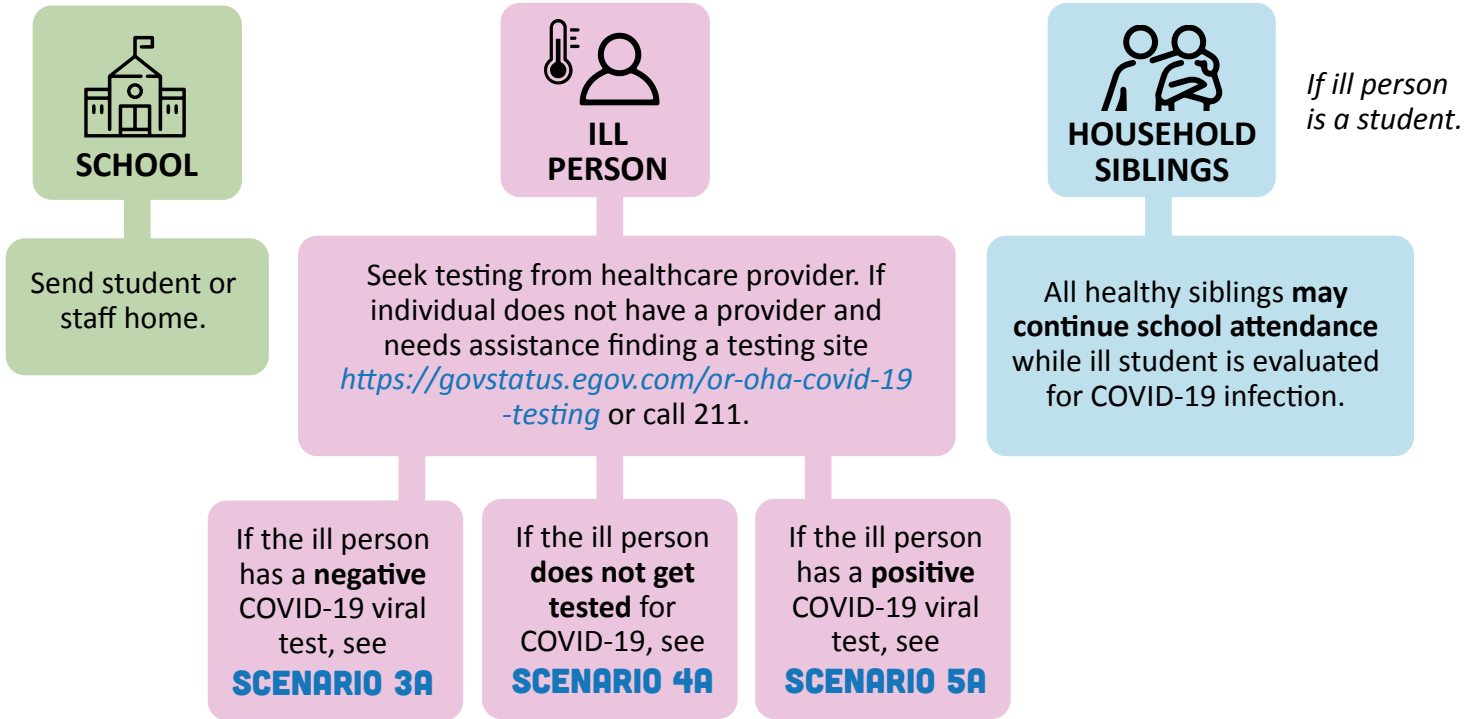
SCENARIO 1B. A HEALTHY STUDENT OR STAFF MEMBER HAS BEEN EXPOSED TO A PERSON WITH CONFIRMED COVID-19 OUTSIDE OF THEIR HOUSEHOLD



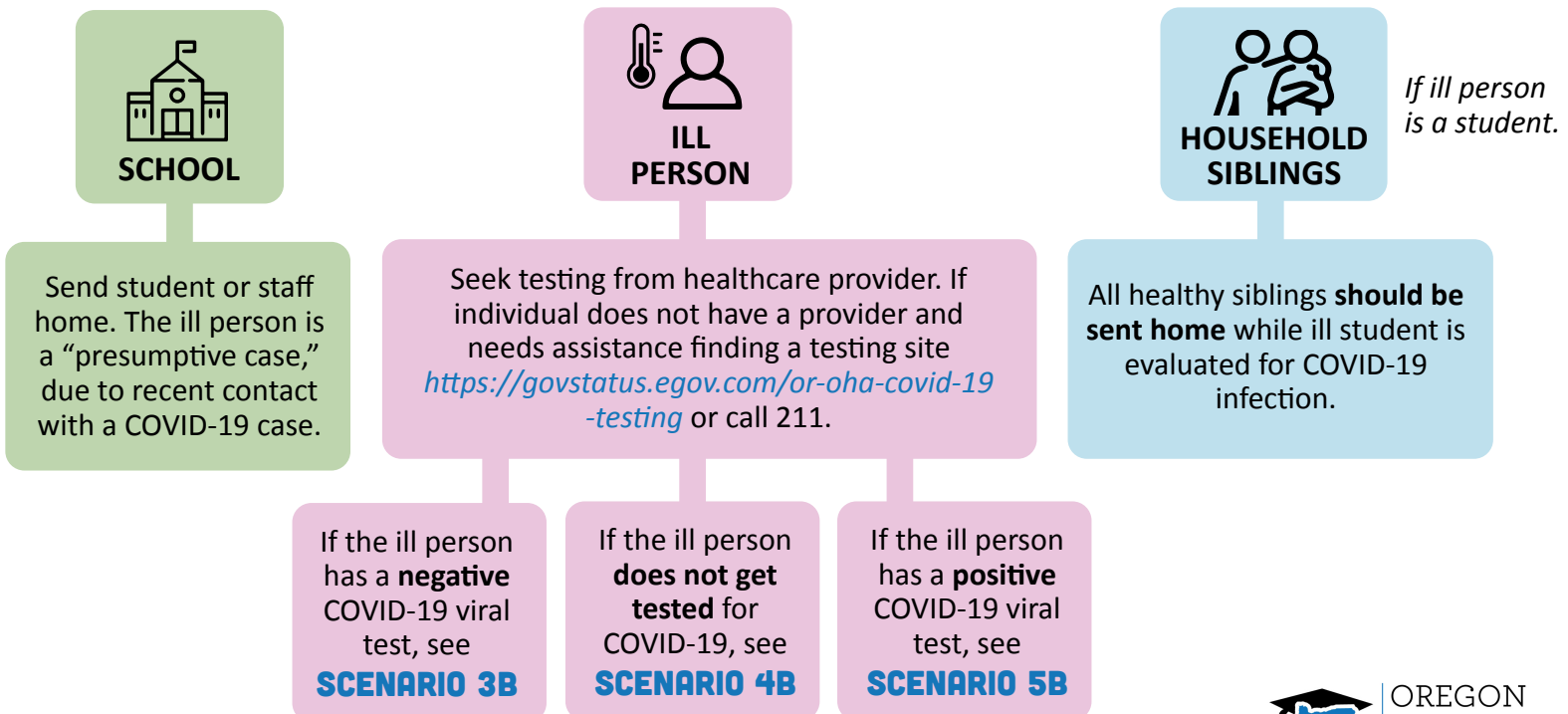
2. SCHOOL SCENARIOS

HOW TO HANDLE COVID-19 ILLNESS

SCENARIO 2A. A STUDENT OR STAFF MEMBER BECOMES ILL WITH COVID-19 SYMPTOMS. ILL PERSON HAS NO KNOWN COVID-19 CONTACTS IN PAST 14 DAYS.



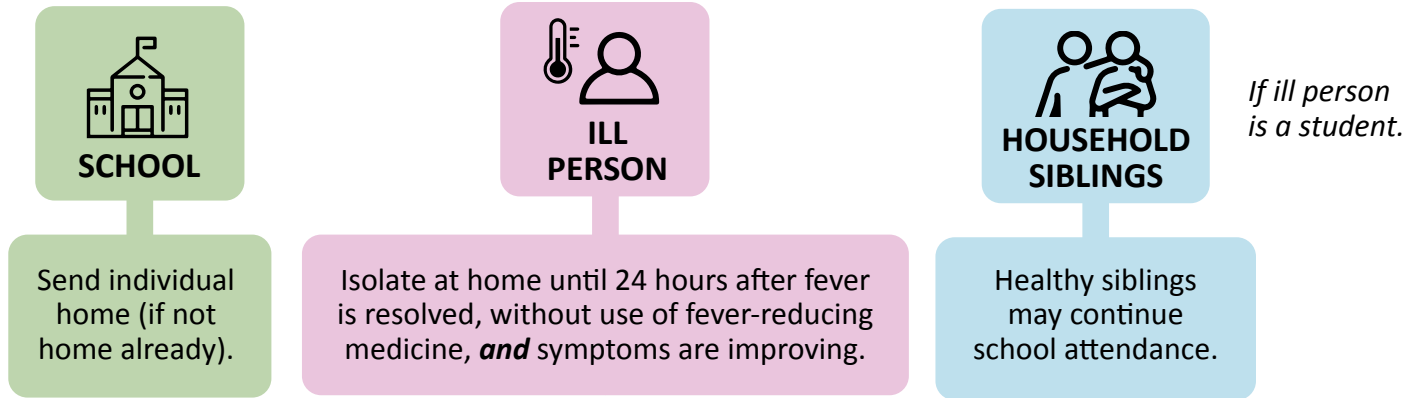
SCENARIO 2B. A STUDENT OR STAFF MEMBER BECOMES ILL WITH COVID-19 SYMPTOMS. ILL PERSON WAS IN CLOSE CONTACT WITH SOMEONE WITH HAS COVID-19 IN PAST 14 DAYS.



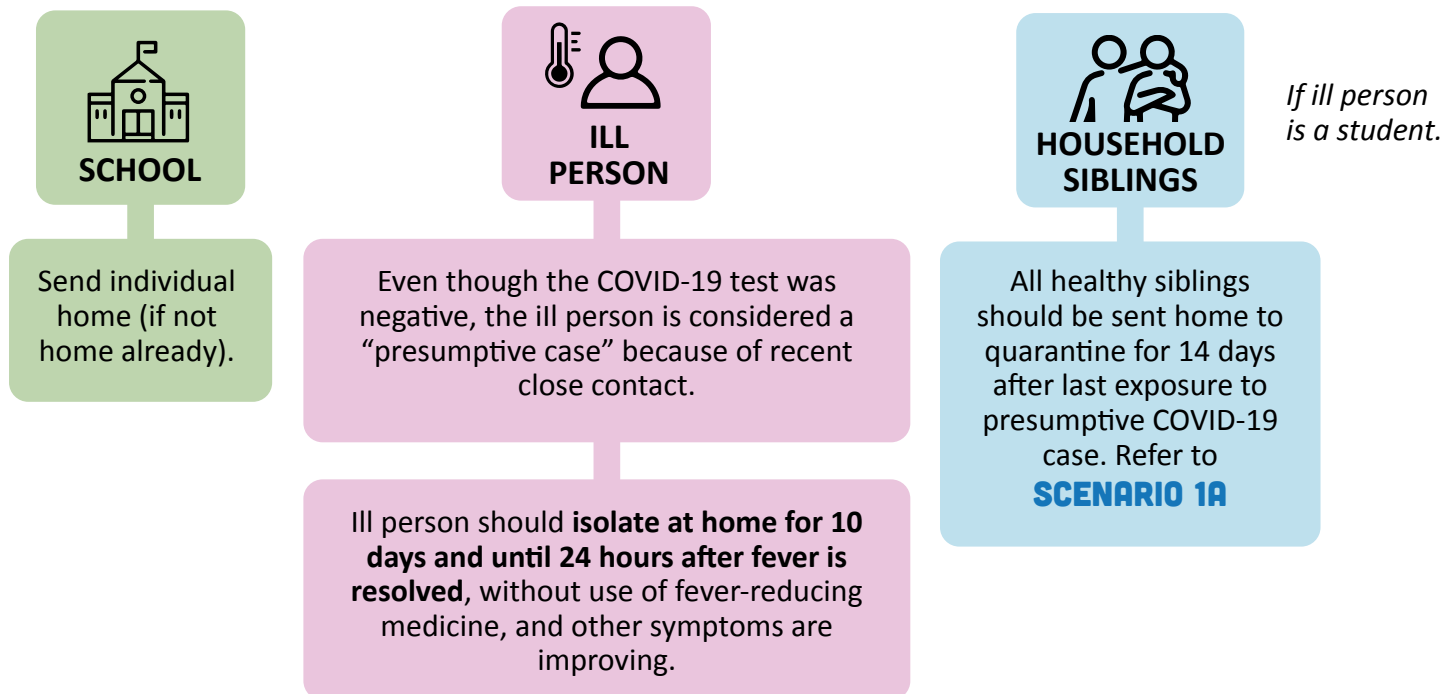
3. SCHOOL SCENARIOS

HOW TO HANDLE A NEGATIVE COVID-19 VIRAL TEST

SCENARIO 3A. AN ILL STUDENT OR STAFF MEMBER HAS A NEGATIVE COVID-19 VIRAL TEST. ILL PERSON HAS NO KNOWN COVID-19 CONTACTS IN PAST 14 DAYS.



SCENARIO 3B. AN ILL STUDENT OR STAFF MEMBER HAS A NEGATIVE COVID-19 VIRAL TEST. ILL PERSON WAS IN CLOSE CONTACT WITH SOMEONE WITH HAS COVID-19 IN PAST 14 DAYS.



4A. SCHOOL SCENARIOS

HOW TO HANDLE WHEN A PERSON DOES NOT GET TESTED

SCENARIO 4A. AN ILL STUDENT OR STAFF MEMBER DOES NOT GET TESTED WITH A COVID-19 VIRAL TEST. ILL PERSON HAS NO KNOWN COVID-19 CONTACTS IN PAST 14 DAYS.



SCHOOL

Send individual home (if not home already).



ILL PERSON

If the ill person has **respiratory symptoms**, isolate at home for 10 days **and** until 24 hours after fever is resolved, without use of fever-reducing medicine, and other symptoms are improving.

If **no alternative diagnosis is identified** as the cause of the person's illness, the ill person should isolate at home for 10 days **and** until 24 hours after fever is resolved, without use of fever-reducing medicine, and other symptoms are improving.

If a clear alternative **non-respiratory diagnosis is identified** as the cause of the person's illness (e.g., a positive urine culture in a febrile child), then usual disease-specific return-to-school guidance should be followed **and** person should be fever-free for 24 hours, without use of fever-reducing medicine.

A healthcare provider note is required for return to school *before* 10 days of isolation, ensuring that the person is no longer contagious.



HOUSEHOLD SIBLINGS

If ill person is a student.

If **no alternative diagnosis is identified** as the cause of the person's illness, then all siblings should quarantine at home for 14 days after their last exposure to the ill sibling. Refer to **SCENARIO 1A**

If a clear alternative **non-respiratory diagnosis is identified** as the cause of the person's illness (e.g., a positive urine culture in a febrile child), then all healthy siblings may continue school attendance.

4B. SCHOOL SCENARIOS

HOW TO HANDLE WHEN A PERSON DOES NOT GET TESTED

SCENARIO 4B. AN ILL STUDENT OR STAFF MEMBER DOES NOT GET TESTED WITH A COVID-19 VIRAL TEST. ILL PERSON WAS IN CLOSE CONTACT WITH SOMEONE WITH HAS COVID-19 IN PAST 14 DAYS.



SCHOOL

Send individual home (if not home already). The ill person is a “presumptive case,” due to recent contact with a COVID-19 case.



ILL PERSON

If the ill person has **respiratory symptoms**, isolate at home for 10 days **and** until 24 hours after fever is resolved, without use of fever-reducing medicine, and other symptoms are improving.

If no **alternative diagnosis is identified** as the cause of the person’s illness, the ill person should isolate at home for 10 days and until 24 hours after fever is resolved, without use of fever-reducing medicine, and other symptoms are improving.

If a clear **alternative *non-respiratory* diagnosis is identified** as the cause of the person’s illness (e.g., a positive urine culture in a febrile child), then usual disease-specific return-to-school guidance should be followed **and** person should be fever-free for 24 hours, without use of fever-reducing medicine.

A healthcare provider note is required to return to school *before* 10 days of isolation, ensuring that the person is no longer contagious.



HOUSEHOLD SIBLINGS

If ill person is a student.

If no **alternative diagnosis is identified** as the cause of the person’s illness, then all siblings should quarantine at home for 14 days after their last exposure to the ill sibling. Refer to **SCENARIO 1A**

If a clear **alternative non-respiratory diagnosis is identified** as the cause of the person’s illness (e.g., a positive urine culture in a febrile child), then all healthy siblings may continue school attendance.

5. SCHOOL SCENARIOS

HOW TO HANDLE A POSITIVE COVID-19 VIRAL TEST

SCENARIO 5. ONE STUDENT OR STAFF MEMBER HAS A POSITIVE COVID-19 VIRAL TEST

