



MOSAIC
COMMUNITY LIFESTYLE
REALTY

BEAVERDAM



130 BLACK OAK DRIVE | ASHEVILLE, NC 28804

130 BLACK OAK DRIVE
ASHEVILLE, NC 28804



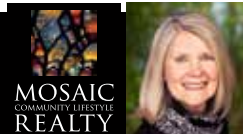
BEAVERDAM



VIEWS! VIEWS! VIEWS!

Strategically sited and masterfully designed, this Beaverdam sanctuary captures spectacular long-range mountain vistas from every angle. Whether you are watching the sunset paint the sky from the expansive two-level deck or peering through soaring walls of windows, the ever-changing scenery serves as your constant backdrop. Inside, an impressive great room is anchored by floor-to-ceiling windows, a vaulted ceiling, and a soaring stone fireplace. The nicely equipped kitchen features granite countertops and stainless steel appliances, including a gas cooktop. Convenience meets luxury on the main level, which hosts the primary bedroom—complete with a walk-in closet and a spacious ensuite bathroom featuring a soaking tub and tiled shower—as well as a guest bedroom, a hall bath, and a laundry room. Upstairs, a versatile loft offers a scenic space for relaxing or working from home, accompanied by a convenient bathroom and another remarkably spacious guest room with a large closet for added storage. Nestled in The Forest of Beaverdam, this exceptional home offers the perfect blend of a private mountain oasis and urban amenities. Enjoy ultimate peace and privacy without sacrificing convenience. You're just minutes away from North Asheville, the energy and culture of downtown Asheville, and an endless array of outdoor mountain adventures.

3 BEDS | 3 BATHS | 2,439 SF | 0.73 ACRE



CAROL MARIN
828-545-2712
CAROL@MYMOSAICREALTY.COM

130 BLACK OAK DRIVE

ASHEVILLE, NC 28804



130 BLACK OAK DRIVE | ASHEVILLE, NC 28804

3 BEDS | 3 BATHS | 2,439 SF | 0.73 ACRE

FEATURES

- Private Beaverdam oasis with stunning long-range mountain views
- Strategically sited and designed to take full advantage of the spectacular views
- Extensive decking for taking in the beautiful sunsets
- Floor-to ceiling windows, vaulted ceilings and an impressive stone fireplace highlight the great room
- Main-level living with open living/dining/kitchen
- Rich Brazilian cherry wood floors throughout the main level
- Dining area offers a world-class mountain view
- Well-equipped kitchen with granite countertops, and stainless steel appliances, including a gas cooktop, a built-in oven and a microwave
- Main-level primary bedroom with walk-in cedar-lined closet and ensuite bath
- Spacious primary bathroom features a large soaking tub, a tiled shower and a double vanity
- The main level also includes a guest bedroom and a guest bathroom
- Relax or work from home while enjoying the mountain views and ever-changing scenery while perched in the wonderful loft space
- Extra-spacious upper-level bedroom has a large storage closet and access to a small private deck
- Full guest bathroom on the upper level
- Main-level laundry room with pantry storage
- Double-car garage
- Mountain-view retreat with privacy and convenience
- Minutes to a multitude of amenities, the Blue Ridge Parkway, and the world-class dining and cultural activities of downtown Asheville

DIRECTIONS

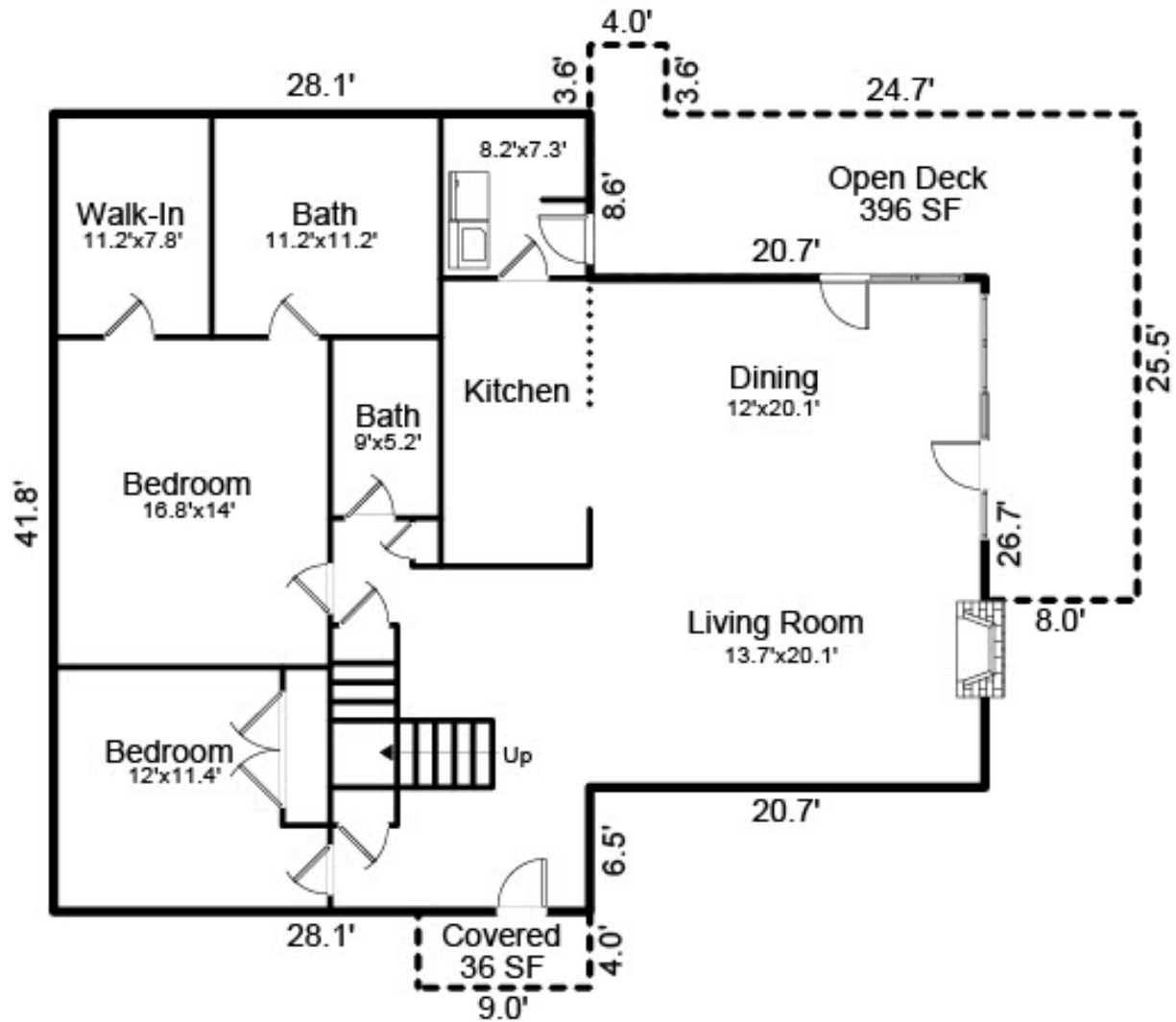
FROM DOWNTOWN ASHEVILLE: Head north on Merrimon Avenue. Turn right onto Beaverdam Road. Left onto Pinecroft Road. Left onto Black Oak Road (The Forest Subdivision). Keep right on Black Oak and follow to 130 on the curve on the left. *NOTE: The driveway is steep; there is only room for one car to park and turn around at the top.*



130 BLACK OAK DRIVE | ASHEVILLE, NC 28804

3 BEDS | 3 BATHS | 2,439 SF | 0.73 ACRE

MAIN LEVEL



130 BLACK OAK DRIVE | ASHEVILLE, NC 28804

3 BEDS | 3 BATHS | 2,439 SF | 0.73 ACRE

