



10 OLD TURNPIKE ROAD

Private Riverfront Retreat on 12 Acres | Mills River



MOSAIC
COMMUNITY LIFESTYLE REALTY

3 Bedrooms, 3 Full + 2 Half Bathrooms
2,740 SF + 1,679 SF Basement • 12.71 Acres



10 OLD TURNPIKE ROAD MILLS RIVER, NC 28759

3 Bedrooms, 3 Full + 2 Half Bathrooms
2,740 SF + 1,679 SF Basement • 12.71 Acres

FEATURES

Enter the property on the **long driveway** surrounded by **large, established oak trees**

The basement level has a **three-car garage with a work area and extra storage**

Walk up to the **large, covered front porch** and enter into the spacious foyer

The main level includes a den, living room with a **fireplace with a wood-burning insert**, a private **den**, a **dining room** off of the kitchen, an open kitchen with a **large island and breakfast bar**, two half baths, a **bonus room** with storage and a full bathroom, a laundry closet, a **bar/coffee room** with french doors leading out to a **massive, covered back porch**



Upstairs, you will find the **primary suite** with wonderful tile work in the bathroom, **two guest bedrooms with a shared bathroom** and a **whole-house attic fan**

Outside, there is a wonderful **fenced-in area** around the house, a **greenhouse**, **several outbuildings** for farm equipment/hay/extra storage, **open pasture with long-range views and a creek**, plus a **second entrance** at the back of the property

On the lower portion of the property, you will find a **hay pasture** and **approximately 900 feet of gorgeous Mills River frontage**

Enjoy the convenience of **city water** along with **central heat and air conditioning**

Property is **zoned MR-MU** (Mills River Multi-Use) so development is an option

25 minutes to Asheville and about **5 minutes to the Asheville Regional Airport**







MOSAIC
COMMUNITY LIFESTYLE REALTY

46 Orchard Street, Suite 100, Asheville, NC 28801
WWW.MYMOSAICREALTY.COM

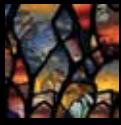




MOSAIC
COMMUNITY LIFESTYLE REALTY

46 Orchard Street, Suite 100, Asheville, NC 28801
WWW.MYMOSAICREALTY.COM







Discover the perfect blend of privacy, comfort, and natural beauty with this exceptional home on 12+ picturesque acres with stunning river frontage. Surrounded by mature trees and peaceful landscapes, this property offers a rare opportunity to enjoy the tranquility of country living without sacrificing modern conveniences.

Inside, the spacious floor plan features three generously sized bedrooms, three full bathrooms, two half bathrooms and additional inviting spaces designed for both everyday living and entertaining. Large windows bring in abundant natural light while showcasing views of the surrounding property. Generous covered front and back porches are the perfect places for enjoying the end of the day.

Step outside to explore your own private oasis. Whether you're fishing, relaxing by the water, or simply enjoying the sights and sounds of nature, the riverfront creates an unforgettable backdrop. The expansive acreage offers endless possibilities for recreation, gardening, hobby farming, keeping horses—or for creating your dream outdoor retreat.

Ideal as a full-time residence or as a vacation home, this one-of-a-kind estate combines space, privacy, and beautiful river frontage in a truly spectacular setting.

Come experience the beauty and serenity this remarkable property has to offer.



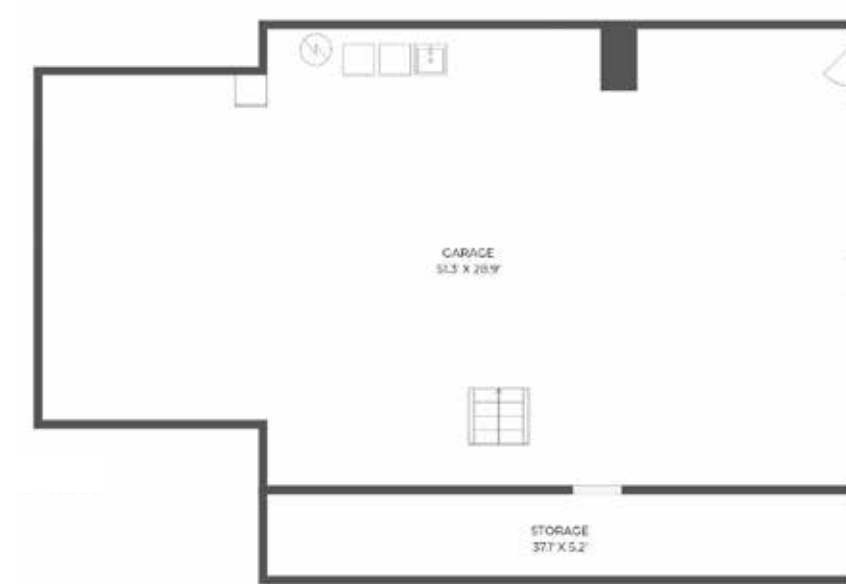
For more information, please contact:

NICHOLAS BUTTS
828-707-1885

NICHOLAS@MYMOSAICREALTY.COM

DIRECTIONS

FROM DOWNTOWN ASHEVILLE: From I-26, take Exit 40 toward Mills River/Brevard. Go 4.4 miles to the first stoplight after the Ingles and make a right on S. Mills River Road. After 0.1 mile, take your first left at Old Turnpike Road. The driveway entrance is just after the turn, on the right. GPS will get you easily to the property.



BASEMENT LEVEL