



# Did you know???

Collecting Box Tops brought in over \$1,200 for Bee Cave Elementary last year?



That's a lot of money for just clipping Box Tops!

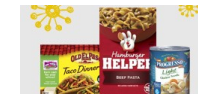


The BCEPTO pours that money back into the school through various supplies and programs.

Box Tops can be found on hundreds of quality products from:



Soups/Taco/Meals



Cereals



Daily/Yogurt



Visit [boxtops4education.com](http://boxtops4education.com) for a full list of participating brands.

\*\*\*\*\*LOOK WHAT WE COULD EARN!!!!\*\*\*\*\*

# of BCE Students	Box Tops Per month per student	Months (per school year)	Box Tops Value	Earning Potential for the year
686	1	10	\$0.10	\$686.00
686	5	10	\$0.10	\$3,430.00
686	10	10	\$0.10	\$6,860.00
686	20	10	\$0.10	\$13,720.00
686	30	10	\$0.10	\$20,580.00

**SEND IN YOUR BOX TOPS! USE THE COLLECTION SHEET!!!**

We will be collecting Box Tops all year long! You can use our collection sheet to glue and keep track (turn it in when it's full or turn them into your teacher in a baggie, envelope with your name and your teacher's name on it. There are also drop boxes in the front office and library. Thank you! You can also click the link or visit our website for more information at [www.bcepto.com](http://www.bcepto.com) click on fundraising.



# Bee Cave Elementary Box Top Collection

Name: \_\_\_\_\_

Teacher: \_\_\_\_\_

Grade: \_\_\_\_\_



## CLIP!

Clip, cut and tape/glue your Box tops right on this page! Make sure they are NOT expired!!

## SEND!

Once filled up, send these to Bee Cave Elementary. Give to your teacher, the front office or in the drop boxes at school.

## EARN!

This filled page will give Bee Cave Elementary \$2.50!! The PTO uses their funds to provide technology, class field trips, tutoring, enrichment programs, and software/learning tools. Every dime counts!