

We are excited to serve our church family and friends in the community an affordable, delicious meal on Wednesday evenings through our Faith and Food Program. *With the increased number of participants safety in our parking lot and on Chestnut Level Road has become a concern. In an effort to alleviate some of the safety issues, we will be instituting the following changes starting Wednesday, February 1, 2023:*

Dining In:

- ❖ Please enter and park in the Family Life Center parking lot off River Road. Handicapped parking will continue to be available in front of the Family Life Center if needed.
- ❖ Starting Wednesday, February 1 if you are dining in, please pay and make your reservation for the following week inside at our Welcome Table! *You do not need to stop at the outside pay/order station.*

Grab and Go Line:

- ❖ If entering from Chestnut Level Road, off 272, please turn in the first entrance to the church parking lot and form a line through the church parking lot as the cones/parking attendants direct.
- ❖ If entering from River Road, please turn onto Chestnut Level Road and turn in the second entrance to the church parking lot and form a line through the church parking lot as the cones/parking attendants direct. The church parking lot entrance on River Road will be closed. **All cars must enter the church parking lot from Chestnut Level Road.**

Our goal is to wrap the line around the church parking lot keeping all cars off Chestnut Level Road while waiting.

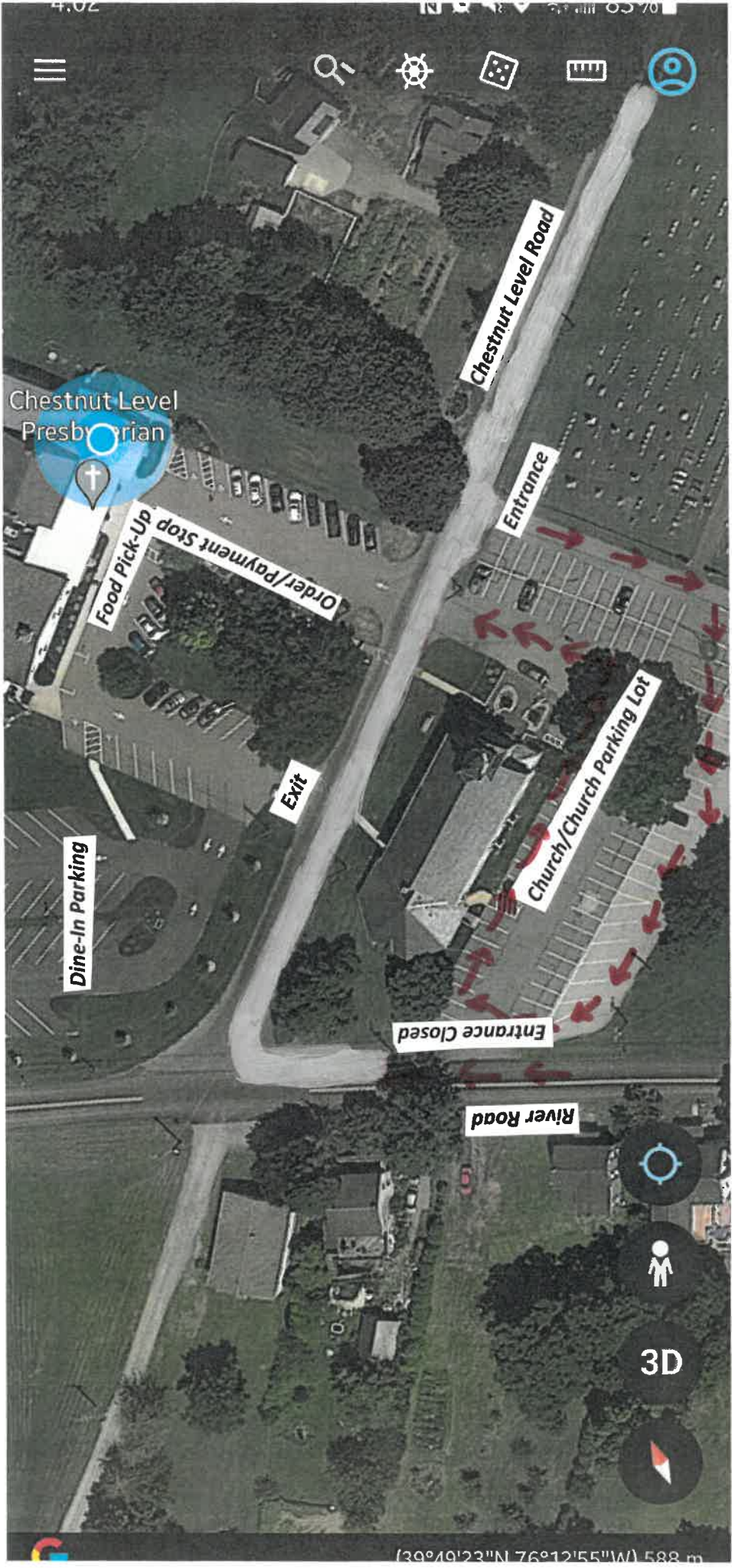
- ❖ Please remain in the church parking lot until you are directed by a parking attendant to pull across the road to the Family Life Center.

[See Map Attached](#)

Please Note:

Pick up time is from 5:30 to 6:30 PM. If we are ready to serve prior to that, we will begin earlier, but we do not guarantee an earlier pick-up.

Thank you for your cooperation in this matter!



Chestnut Level Presbyterian

Chestnut Level Road

Entrance

Food Pick-Up
Order/Payment Stop

Dine-In Parking

Exit

Church/Church Parking Lot

Entrance Closed

River Road

3D

(39°40'23"N 76°12'55"W) 588 m