

FOR IMMEDIATE RELEASE
 April 22, 2026

Contact:
 Mathew Barewicz, E & LMI Director, Department of Labor
 802-828-4153 | mathew.barewicz@vermont.gov

Vermont's Unemployment Rate Declined to 2.6 Percent in February

Today, the Vermont Department of Labor released data on the Vermont economy for the time period covering February 2026. According to household data, the seasonally-adjusted statewide unemployment rate for February was 2.6 percent. This reflects a decrease of one-tenth of one percentage point from the prior month's revised estimate. The civilian labor force participation rate was 63.2 percent in February, a decrease of three-tenths of one percentage point from the prior month's revised estimate.

Commissioner's Message

"The February 2026 data continue to underscore a concerning decline in Vermont's labor force and reinforce the need for an all-hands-on-deck approach to retain and attract residents. Over the past year, the labor force has decreased by more than 7,800 people—a 2.2% drop—driven largely by retirements and a lack of new entrants into the workforce. As we continue to receive first-quarter data, March figures will be released in two weeks, on May 6th. While they may show modest improvement, ongoing conversations with businesses make clear that hiring challenges persist.

One important tool available now to expand opportunities for workers and support business growth is Registered Apprenticeship. These programs offer low- or no-cost training that leads directly to employment in high-demand, well-paying fields, while helping employers build and retain their workforce. National Apprenticeship Week 2026 begins next week—follow along at [National Apprenticeship Week](#)."

Chart 1. Unemployment Rate, seasonally adjusted

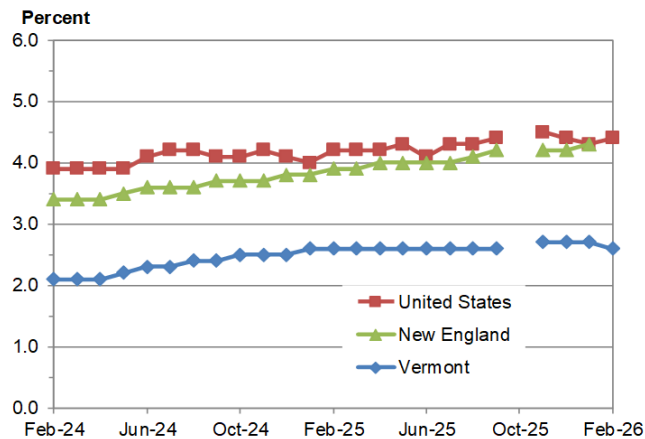
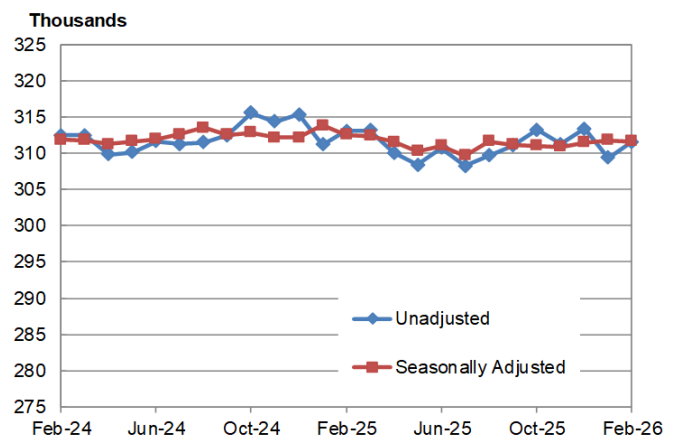


Chart 2. Vermont Nonfarm Payroll Employment



State of Vermont Overview

The Vermont seasonally-adjusted unemployment rate decreased to 2.6 percent in February. The comparable United States rate in February was 4.4 percent, an increase of one-tenth of one percentage point from the revised January estimate. The seasonally-adjusted Vermont data for February show the Vermont civilian labor force decreased by 1,383 from the prior month's revised estimate (see Table 1). The number of employed persons decreased by 1,247 and the number of unemployed persons decreased by 136. None of the changes were statistically significant in the seasonally-adjusted series.

The February unemployment rates for Vermont's 14 counties ranged from 2.2 percent in Chittenden County to 5.9 percent in Orleans County (note: county unemployment rates are not seasonally-adjusted – see Table 2). For comparison, the February unadjusted unemployment rate for Vermont was 2.9 percent, a decrease of three-tenths of one percentage point from the revised unadjusted January level and a decrease of one-tenth of one percentage point from a year ago.

Analysis of Job Changes by Industry

Seasonally-Adjusted (Table 3)

The seasonally-adjusted data for February reported a decrease of 100 jobs from the revised January data. There was an increase of 200 jobs between the preliminary and the revised January estimates due to the inclusion of more data. The seasonally-adjusted over-the-month changes in February varied at the industry level. The industry with a notable increase was State Government (+200 jobs or +1.0%). The industries with a notable decrease were: Construction (-400 jobs or -2.4%) and Private Educational Services (-200 jobs or -1.6%).

Not-Seasonally-Adjusted (Table 4)

The preliminary 'not-seasonally-adjusted' jobs estimates for February showed an increase of 2,200 jobs when compared to the revised January numbers. As with the seasonally-adjusted data, this over-the-month change is from the revised January numbers which experienced a decrease of 200 jobs from the preliminary estimates. The broader economic picture can be seen by focusing on the over-the-year changes in this data series. As detailed in the preliminary not-seasonally-adjusted February data, Total Private industries decreased by 1,400 jobs (-0.5%) over the year and Government (including public education) employment decreased by 100 jobs (-0.2%) in the past year.

*** BLS note on CES series drops in 2026: <https://www.bls.gov/sae/notices/2026/notice-of-publication-changes-with-the-release-of-February-2026-data.htm> ***

The Unemployment and Jobs Report for March is scheduled to be released on Wednesday, May 6, 2026, at 10:00 a.m.



Table 1. Vermont Labor Force Estimates, seasonally adjusted

	February 2026	January 2026	February 2025	Change From:	
				January 2026	February 2025
Civilian Labor Force	344,047	345,430	351,900	-1,383	-7,853
Employed	334,940	336,187	342,777	-1,247	-7,837
Unemployed	9,107	9,243	9,123	-136	-16
Unemployment Rate (%)	2.6	2.7	2.6	-0.1	0.0

Vermont's labor force, employment and unemployment statistics are produced from a combination of a Statewide survey of households and statistical modeling. The data are produced by the Local Area Unemployment Statistics Program (LAUS), a cooperative program with the U.S. Department of Labor, Bureau of Labor Statistics (www.bls.gov/lau) and the Vermont Department of Labor (www.vtmi.info/laus.cfm).

Table 2. Vermont Counties, Labor Force Estimates
not seasonally adjusted

County	Civilian Labor Force	February 2026		Unemployment Rate ¹ (%)		
		Employed	Unemployed	Feb-26	Jan-26	Feb-25
Vermont Total	340,114	330,176	9,938	2.9	3.2	3.0
Addison	20,665	20,083	582	2.8	3.0	2.9
Bennington	17,047	16,454	593	3.5	3.6	3.8
Caledonia	15,713	15,190	523	3.3	3.6	3.6
Chittenden	95,135	93,003	2,132	2.2	2.4	2.3
Essex	2,691	2,570	121	4.5	4.9	4.2
Franklin	25,974	25,142	832	3.2	3.5	3.1
Grand Isle	3,935	3,777	158	4.0	4.5	4.1
Lamoille	15,532	15,016	516	3.3	3.5	3.3
Orange	15,560	15,051	509	3.3	3.5	3.7
Orleans	13,422	12,628	794	5.9	6.4	5.7
Rutland	29,124	28,208	916	3.1	3.3	3.5
Washington	31,988	31,065	923	2.9	3.3	3.0
Windham	24,001	23,378	623	2.6	2.9	2.8
Windsor	29,328	28,611	717	2.4	2.7	2.6

¹Rate is an estimate for number of unemployed divided by total labor force, expressed as a percent.

Source: Local Area Unemployment Statistics Program (LAUS) produced by the Vermont Department of Labor (www.vtmi.info/laus.cfm) in cooperation with the U.S. Bureau of Labor Statistics (www.bls.gov/lau).



Table 3. Vermont Nonfarm Payroll Employment, seasonally adjusted (thousands)

NAICS Industry	Feb-26	Jan-26	Feb-25	Change From:		% Change From:	
	Prelim	Revised	Revised	Jan-26	Feb-25	Jan-26	Feb-25
Statewide, Total Nonfarm	311.7	311.8	312.6	-0.1	-0.9	0.0	-0.3
Total Private	255.6	256.1	256.1	-0.5	-0.5	-0.2	-0.2
Mining, Logging and Construction	17.2	17.7	17.1	-0.5	0.1	-2.8	0.6
Mining & Logging	0.8	0.9	0.8	-0.1	0.0	-11.1	0.0
Construction	16.4	16.8	16.3	-0.4	0.1	-2.4	0.6
Manufacturing	27.4	27.5	27.5	-0.1	-0.1	-0.4	-0.4
Durable Goods	16.4	16.5	16.4	-0.1	0.0	-0.6	0.0
Non-Durable Goods	11.0	11.0	11.1	0.0	-0.1	0.0	-0.9
Trade, Transportation and Utilities	50.9	50.8	52.1	0.1	-1.2	0.2	-2.3
Wholesale Trade	8.3	8.2	8.6	0.1	-0.3	1.2	-3.5
Retail Trade	34.8	34.7	35.5	0.1	-0.7	0.3	-2.0
Trans., Warehousing & Utilities	7.8	7.9	8.0	-0.1	-0.2	-1.3	-2.5
Information	4.3	4.3	4.5	0.0	-0.2	0.0	-4.4
Financial Activities	11.5	11.5	11.5	0.0	0.0	0.0	0.0
Finance & Insurance	8.6	8.6	8.5	0.0	0.1	0.0	1.2
Real Estate, Rental & Leasing	2.9	2.9	3.0	0.0	-0.1	0.0	-3.3
Professional and Business Services	32.2	32.5	33.0	-0.3	-0.8	-0.9	-2.4
Professional & Technical Services	17.5	17.5	17.7	0.0	-0.2	0.0	-1.1
Education and Health Services	65.9	65.8	65.1	0.1	0.8	0.2	1.2
Private Educational Services	12.7	12.9	12.8	-0.2	-0.1	-1.6	-0.8
Health Care & Social Assistance	53.2	52.9	52.3	0.3	0.9	0.6	1.7
Leisure and Hospitality	36.3	36.1	35.2	0.2	1.1	0.6	3.1
Arts, Entertainment & Recreation	5.1	5.1	5.0	0.0	0.1	0.0	2.0
Accommodation & Food Services	31.2	31.0	30.2	0.2	1.0	0.6	3.3
Other Services	9.9	9.9	10.1	0.0	-0.2	0.0	-2.0
Government	56.1	55.7	56.5	0.4	-0.4	0.7	-0.7
Federal	6.6	6.6	7.0	0.0	-0.4	0.0	-5.7
State	19.4	19.2	18.9	0.2	0.5	1.0	2.6
Local	30.1	29.9	30.6	0.2	-0.5	0.7	-1.6
Burlington-S. Burlington (MSA)	124.2	124.5	125.1	-0.3	-0.9	-0.2	-0.7
Total Nonfarm							

Source: Current Employment Statistics Program (CES) produced by the Economic and Labor Market Information Division, Vermont Department of Labor (www.vtmi.info/ces.cfm) in cooperation with the U.S. Bureau of Labor Statistics (www.bls.gov/sae).

Estimates are preliminary and subject to revision. See Annual Summary for details.



Table 4. Vermont Nonfarm Payroll Employment, not seasonally adjusted

NAICS Industry	Feb-26	Jan-26	Feb-25	Change From:		% Change From:	
	Prelim	Revised	Revised	Jan-26	Feb-25	Jan-26	Feb-25
TOTAL NONFARM	311,600	309,400	313,100	2,200	-1,500	0.7	-0.5
TOTAL PRIVATE	253,900	253,300	255,300	600	-1,400	0.2	-0.5
GOODS-PRODUCING	43,200	43,700	42,800	-500	400	-1.1	0.9
MINING, LOGGING AND CONSTRUCTION	15,900	16,400	15,500	-500	400	-3.0	2.6
Mining & Logging	800	800	700	0	100	0.0	14.3
Construction	15,100	15,600	14,800	-500	300	-3.2	2.0
MANUFACTURING	27,300	27,300	27,300	0	0	0.0	0.0
Durable Goods	16,400	16,400	16,300	0	100	0.0	0.6
Non-Durable Goods	10,900	10,900	11,000	0	-100	0.0	-0.9
Food Mfg.	5,200	5,200	5,300	0	-100	0.0	-1.9
SERVICE-PROVIDING	268,400	265,700	270,300	2,700	-1,900	1.0	-0.7
TRADE, TRANSPORTATION AND UTILITIES	50,600	50,700	51,600	-100	-1,000	-0.2	-1.9
Wholesale Trade	8,200	8,100	8,500	100	-300	1.2	-3.5
Retail Trade	34,600	34,600	35,200	0	-600	0.0	-1.7
Food & Beverage Retailers	9,700	9,700	9,600	0	100	0.0	1.0
Transportation, Warehousing & Utilities	7,800	8,000	7,900	-200	-100	-2.5	-1.3
Transportation & Warehousing	6,600	6,800	6,700	-200	-100	-2.9	-1.5
Utilities	1,200	1,200	1,200	0	0	0.0	0.0
INFORMATION	4,300	4,300	4,500	0	-200	0.0	-4.4
FINANCIAL ACTIVITIES	11,400	11,400	11,400	0	0	0.0	0.0
Finance & Insurance	8,600	8,600	8,500	0	100	0.0	1.2
Real Estate, Rental & Leasing	2,800	2,800	2,900	0	-100	0.0	-3.4
PROFESSIONAL AND BUSINESS SERVICES	31,600	31,600	32,400	0	-800	0.0	-2.5
Professional & Technical Services	17,600	17,400	17,600	200	0	1.1	0.0
EDUCATION AND HEALTH SERVICES	66,400	65,300	65,800	1,100	600	1.7	0.9
Private Educational Services	13,500	12,600	13,800	900	-300	7.1	-2.2
Colleges and Universities	7,700	6,900	7,900	800	-200	11.6	-2.5
Health Care & Social Assistance	52,900	52,700	52,000	200	900	0.4	1.7
Ambulatory Health Care Services	17,500	17,500	17,200	0	300	0.0	1.7
Hospitals	14,600	14,600	14,700	0	-100	0.0	-0.7
Nursing & Residential Care Facilities	7,300	7,200	6,900	100	400	1.4	5.8
Social Assistance	13,500	13,400	13,200	100	300	0.7	2.3
LEISURE AND HOSPITALITY	36,600	36,500	36,900	100	-300	0.3	-0.8
Arts, Entertainment & Recreation	4,700	4,600	4,700	100	0	2.2	0.0
Accommodation & Food Services	31,900	31,900	32,200	0	-300	0.0	-0.9
Accommodation	13,000	13,000	13,400	0	-400	0.0	-3.0
Food Services & Drinking Places	18,900	18,900	18,800	0	100	0.0	0.5
OTHER SERVICES	9,800	9,800	9,900	0	-100	0.0	-1.0
GOVERNMENT	57,700	56,100	57,800	1,600	-100	2.9	-0.2
Federal Government	6,600	6,600	7,000	0	-400	0.0	-5.7
State Government Education	10,400	9,100	10,100	1,300	300	14.3	3.0
Other State Government	9,900	9,900	9,600	0	300	0.0	3.1
Local Government Education	22,600	22,100	23,000	500	-400	2.3	-1.7
Other Local Government	8,200	8,400	8,100	-200	100	-2.4	1.2

Source: Current Employment Statistics Program (CES) produced by the Economic and Labor Market Information Division, Vermont Department of Labor
Estimates are preliminary and subject to revision. See Annual Summary for details.

