

Commercial Vehicle Enforcement.

NORTHWEST SECTOR:

Details:

- 04/29, I-89 Colchester weigh station detail; 5 Inspectors screened 342 commercial motor vehicles. 19 Inspections were conducted and 27 violations detected (25 vehicle and 2 driver). 12 vehicles were placed out of service.

Crashes: Nothing to report.

Notables:

- 04/27-28, Jericho; Inspector. attended a law enforcement red dot pistol training course, hosted by the VT Fish and Wildlife, and instructed by Ridgeline Defense. The course placed particular emphasis on instructor development; equipping firearms instructors with advanced techniques, curriculum frameworks, and range methodologies to elevate the quality of training within DMV Enforcement and Safety.



- 04/27, US Rte. 7 Charlotte; Sergeant stopped a truck hauling a windmill for a load securement violation. An inspection and portable weigh were conducted. The truck was over 20,000 pounds its legal tare. The combination required a class A commercial license, and the driver did not possess one or a medical card. Additionally, multiple wheel fasteners were missing on the trailer. The driver and trailer were placed out of service. The carrier and driver were ticketed.



- 04/28, VT Rte. 15 Hyde Park; Sergeant stopped a truck hauling concrete blocks for a load securement violation. An inspection was conducted and two straps were required for the concrete block weighing over 1100 pounds not braced/blocked against forward movement. The truck was placed out of service until the driver added another strap.



- 04/29, I-89 Colchester weigh station detail; Sergeant inspected a tractor trailer combination. The trailer had a flat tire. The trailer was placed out of service.
- 04/29, I-89 Colchester weigh station detail; Sergeant inspected a tractor trailer combination. The trailer had a severely deflated tire. The trailer was placed out of service.
- 04/29, I-89 Colchester weigh station detail; Inspector inspected a truck and trailer combination. The inspection revealed that the machinery it was hauling was not secured properly. The combination was placed out of service until the load securement was remedied.



- 04/29, I-89 Colchester weigh station detail; Inspector inspected a tractor trailer combination. The inspection revealed that a tire was measuring less than 50% of the max inflation pressure. The trailer was placed out of service for repair.
- 04/29 I-89 Colchester weigh station detail; Inspector inspected a tractor trailer combination. The inspection revealed that both the emergency glad hand and the service glad hand hoses were damaged fraying the reinforcement ply. The combination was placed out of service for repair.



- 04/29, I-89 Colchester weigh station detail; Inspector inspected a tractor trailer combination. The inspection revealed that a tire on the trailer was measuring less than 50% of the max inflation pressure. The trailer was placed out of service for repair.

- 04/29, I-89 Colchester weigh station detail; Inspector inspected a tractor trailer combination. The inspection revealed that a tire on the truck was measuring less than 50% of the max inflation pressure. The truck was placed out of service for repair.
- 04/29, I-89 Colchester weigh station; Inspector inspected a commercial motor vehicle and found that the vehicle had an underinflated tire on the trailer. During inspection 2 other vehicle violations were discovered. The combination was placed out of service until the tire was repaired.
- 04/29, I-89 Colchester weigh station; Inspector inspected a commercial motor vehicle and found that the vehicle had an underinflated tire on the trailer. During the inspection a driver violation was discovered as well. The combination was placed out of service until the tire was repaired.
- 04/30, US Rte. 7 Charlotte; Sergeant stopped a box truck for a speed infraction. An inspection was conducted and the carrier was found to be suspended in Vermont for failing to return inspection reports. The carrier was grounded and ticketed.



- 04/30, Ferry Road in Charlotte; Sergeant and Inspector presented to approximately 15 members of the Vermont Nursery and Landscape Association. Topics included the federal motor carrier safety regulations, licensing, state weight regulations and a question-and-answer period. The event was well received.

Safety Audits:

NORTHEAST SECTOR:

Details:

- 04/28 I-91 Bradford Sb Rest Area, 4 inspectors screened 65 vehicles. 21 inspections were completed which resulted in 27 vehicle violations (4 out of service) and 7 driver violations (1 out of service).

Crashes:

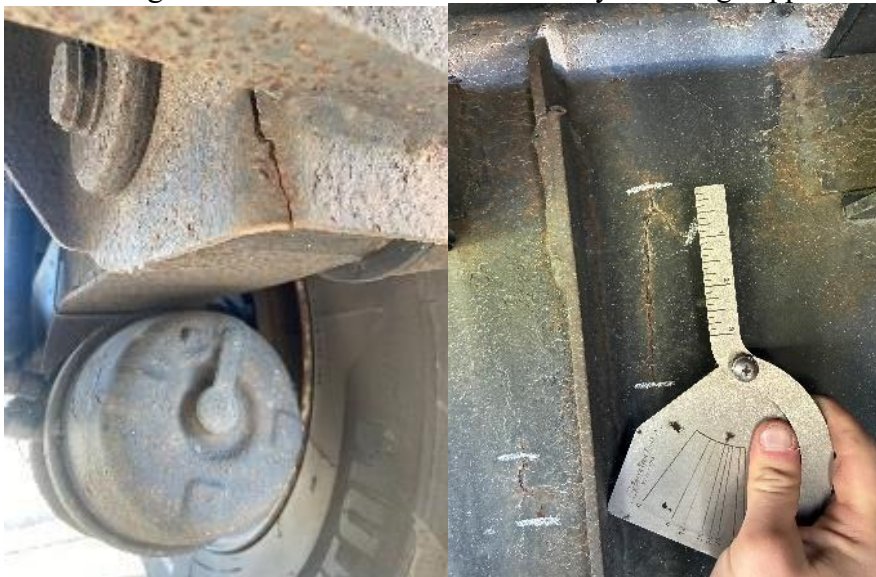
- Nothing to report.

Notables:

- 04/27 Lyndonville, Inspector conducted a traffic stop on a commercial motor vehicle hauling a lift loaded with equipment extending more than 4 feet past the rearmost part of the vehicle with no flag. An inspection was completed and it was also discovered the equipment was improperly secured, being more than 10,000 lbs. with only three tie-downs with an unsecured boom. The vehicle was placed out of service.



- 04/28 Bradford detail, Inspector conducted an inspection on a truck-tractor semitrailer combination commercial motor vehicle. During the inspection, 3 violations were discovered including one tire on the semi-trailer to be less than 50% of the maximum inflation pressure. The semi-trailer was placed out of service.
- 04/29 Derby, Inspector conducted an inspection on a truck-tractor semi-trailer combination commercial motor vehicle. During the inspection, 14 violations were discovered including multiple cracks in the frame side rail web of the semi-trailer directed towards the bottom flange and on frame members adversely affecting support of suspension components.



- 04/27 West Charleston, Inspector conducted a traffic stop on a vehicle for limitation on passing. It was discovered the vehicle was an interstate commercial motor vehicle which did not obtain USDOT numbers or a medical certificate. An inspection was completed and the driver was placed out of service.



- 04/29 Irasburg, Inspector conducted a traffic stop on a commercial motor vehicle for speed. An inspection was completed and it was also discovered the driver failed to wear their corrective lenses as indicated on their license and medical certificate. The driver was able to continue once in compliance.
- 04/29 Derby, Inspector conducted an inspection on a dump truck. During the inspection, 4 violations were discovered including a wheel with multiple cracks between stud holes and a tire with a bulge in the sidewall due to sidewall separation.



- 04/29 Coventry, Inspector conducted a traffic stop on a commercial motor vehicle for failing to pull into an open rest area. An inspection was completed and it was discovered the carrier was under suspension in the State of Vermont. The vehicle was grounded until in compliance.

- 04/29 Derby, Inspector conducted an inspection on a commercial motor vehicle hauling tires. Upon investigation it was found the carrier's operating status was suspended in Vermont. The vehicle was grounded and the carrier was issued a VCVC.
- 04/29 Newport Center, Inspector conducted an inspection on a commercial motor vehicle and discovered the carrier was under suspension in the State of Vermont. The vehicle was grounded until in compliance.
- Inspector attended Background Investigation course held at the Vermont Police Academy.
- 04/30 Lyndonville, Inspector conducted a traffic stop on a commercial motor vehicle hauling logs and completed a portable weigh. The combination was found to be 13,000 lbs. over its allowable 99,000 lbs. limit, a VCVC was issued for the violation.

New Entrant:

- Nothing to report.

Compliance Review:

- Nothing to report.

Passenger Vehicles:

- Nothing to report.

SOUTH SECTOR:

Details:

- 04/28, US 4 Fair Haven Scale House, 3 Inspectors screened 117 vehicles with 11 inspections being conducted. The inspections resulted in 8 vehicle violations and 3 driver violations. 3 vehicles were placed out of service and 3 CVSA decals were issued for clean inspections.
- 04/30, Guilford Truck Check Area 91NB, 3 Inspectors screened 136 vehicles with 9 inspections being conducted. The inspections resulted in 1 vehicle violation and 1 driver violation. 1 vehicle was placed out of service.

Crashes:

Notables:

- 04/27, Sergeant and Lieutenant conducted spring firearms training and qualifications for the department at the Royalton range.

- 04/28, Fair Haven Scale House, Inspector conducted a Level 1 Inspection on a tractor trailer combination and found the frame of the trailer had rust and cracks in multiple locations. The trailer was placed out of service until repairs are made.



- 04/28, US 4 Fair Haven Scale House, Inspector conducted an inspection on a straight truck. Upon further inspection, there were two steering tie rod bolts loose. The vehicle was placed out of service.
- 04/29 & 04/30 Lieutenant and Inspector along with NH State Police conducted an industry outreach for the Professional Logging Contractors of New England.



- 04/29, Inspector observed a flatbed tow truck hauling scrap cars that had debris all over the bed of the truck. The truck was stopped and a Level 2 Inspection was conducted, and the truck was placed out of service until the bed was cleared of the debris.

Traffic Enforcement:

- During the week of the Traffic Enforcement Unit conducted 48 inspections which resulted in 7 drivers and 10 vehicles being placed out of service.

Crashes: Nothing to report.

Notables:

- 04/27, Sergeant attended firearms training in Royalton.
- 04/27, Inspector stopped an Oversize Load Tractor Trailer on I-89 in Randolph for a marking violation. An inspection was conducted and the vehicle did not have the required flags on the over-dimension load. The driver was able to correct the violation and was issued a warning for the permit violation.



- 04/27, Inspector stopped a commercial motor vehicle for a wheel flap violation on I-89 in Randolph. An inspection was conducted and the owner/operator was placed Out of Service for no medical card. A warning was issued.



- 04/27, Inspector conducted a TACT stop on a passenger vehicle on I-89 in Berlin for speeding while passing a commercial motor vehicle. The driver was issued a ticket for a speed of 104 MPH in a 65 MPH zone.
- 04/28, Inspector conducted a TACT stop on a passenger vehicle on I-89 in Williamstown for speeding while passing a commercial motor vehicle. The driver was issued a ticket for a speed of 95 MPH in a 65 MPH zone.
- 04/28, Inspector stopped a commercial motor vehicle for speeding on I-89 in Brookfield. An inspection was conducted and the driver was placed Out of Service for no medical card. The vehicle was placed Out of Service for an inactive USDOT number. The Carrier was issued a ticket.



- 04/28, Sergeant placed a commercial motor vehicle out of service for having more than 20% of its brakes out adjustment, some of the brakes were inoperable and the trailer had leaking inner wheel seals which caused the brake surfaces to be contaminated by grease / oil.



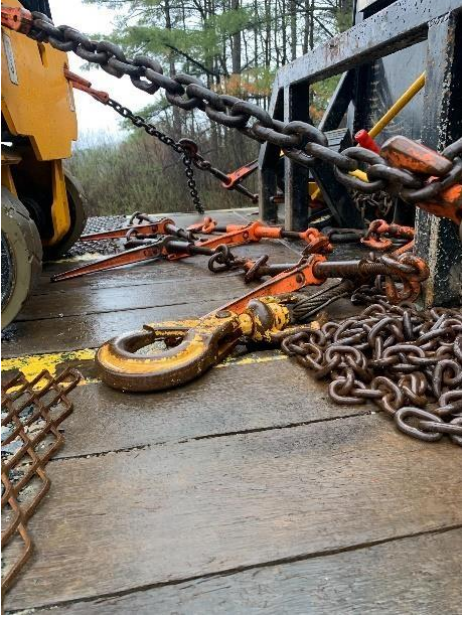
- 04/28, Sergeant placed a commercial motor vehicle out of service for multiple cracked frame and suspension component violations.



- 04/28, Inspector conducted an inspection on a commercial motor vehicle and discovered the multiple violations to include driver did not have a valid medical card. The driver was placed out of service
- 04/30, Sergeant stopped a commercial motor vehicle for a marking violation, the carrier who was engaged in Interstate commerce did not have a USDOT registration. The driver did not have a medical card. The driver was placed out of service for the medical card violation. The owner / operator was issued a VCVC for an expired truck registration.
- 04/29, Inspector stopped a commercial motor vehicle for speeding on I-89 in Brookfield. An inspection was conducted and the driver was placed Out of Service for no medical card. The Carrier was found to be under a Federal Out of Service Order. The vehicle was placed Out of Service and the Carrier was issued a ticket for the OSX violation.



- 04/30, Sergeant stopped a commercial motor vehicle for a lighting violation, the driver of the combination was required to have a medical card and did not have one. The driver was placed out of service for the violation.
- 04/30, Sergeant stopped a commercial motor vehicle for a lighting violation. The rearmost vehicle did not have working lights, the power unit was found to have unsecured cargo on the flatbed. Both violations were repaired at the scene.



- 04/30, Sergeant placed a commercial motor vehicle out of service for a load securement violation. The pallet which was not blocked or braced to prevent forward movement exceeded 1,100lbs. and was only being secured with 1 strap.



- 04/30, Inspector conducted an inspection and located 14 violations to include the operator to not have a commercial driver's license or medical card as required, as well as multiple vehicle violations.

Passenger Vehicle: Nothing to report.

HQ Sergeant:

- 05/01, Sergeant conducted a hazardous materials shipper inspection in Essex.

New Entrant :