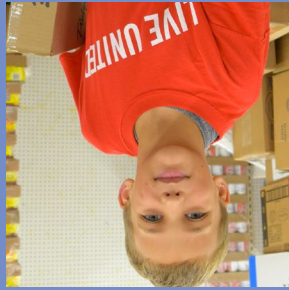
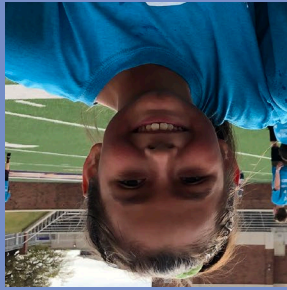
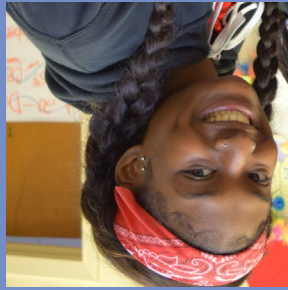
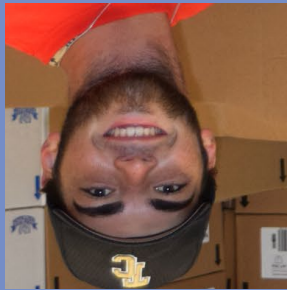
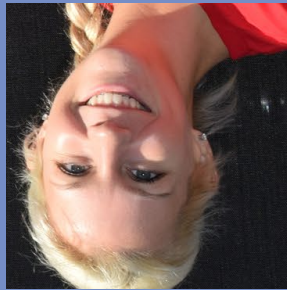


United Way of Central Texas



Respond, Recover, Reimagine & Rebuild

United Way of Central Texas
P.O. Box 1312
Temple, TX 76503



United Way of
Central Texas

LIVE UNITED

Our Vision

- United Way of Central Texas envisions a community where all individuals and families achieve their human potential through health, education, and financial stability.

Our Mission

- United Way of Central Texas improves lives by mobilizing community partnerships and resources to advance the common good.



Community Investment

- The UWCT community investments are ensured by good stewardship and deliver results. The process is volunteer-driven, backed by research, results-oriented, comprehensive, and ongoing.

\$896,605

raised from workplace campaigns for local programs and initiatives.

1,741

number of individual donors who donated to the campaign

\$242

average amount given per donor

Thank You Donors!

- On behalf of the United Way of Central Texas Board of Directors, we say thank you to the donors who invest in the vision at United Way of Central Texas. Without each of you, the mission to impact health, education, and financial stability for every person would not be possible. You have changed lives and helped create a positive economic impact for all with your generous investment.



Use your smart phone camera on this QR code to see our Digital Donor Wall!

Give Today!

Text **UWCTX** to **41444** to give today!



United Way of Central Texas Staff

Stephanie O'Banion
President/CEO

Alicia Dunn
Vice President of
Community Impact

Veshell Greene
Vice President of
Resource Development

Daniel Ramos
Director of Community
Services

Amanda Johnson
Case Manager

Virginia Suarez
Operations Manager

Diamond Martinez
2-1-1 Call Center Manager

Jennifer Wolf
2-1-1 Call Center Specialist
2-1-1 Database Specialist

Samantha Anadon
2-1-1 Call Center Specialist

LaToya Torres
2-1-1 Call Center Specialist

Executive Committee

Chairman
Dr. Robin Battershell
Temple ISD (Ret.)

Past Chairman
Dr. Alan Stevens
Baylor Scott & White Health

David E. Leigh
Shine Branch

Kayla Landeros
West Webb Allbritton &
Gentry, PC

Martha Tyroch
Tyroch Consulting, LLC

Janet Leigh

Vic Lam
Wilsonart Engineered Surfaces

2021 Board of Directors

Board Members

Charley Ayres
Central Texas Workforce
Solutions

Stacie Bratton
Central National Bank

Ricky Crow
Wilsonart Engineered Surfaces

Judy Garrett
City of Belton

Elliot Germany
Panel Specialists

Jerry Haisler
Workforce Solutions of
Central Texas (Ret.)

Robert Jones
BancorpSouth

Board Members Continued

Eyal Kaczur
Baylor Scott & White Health

Drayton McLane, III
McLane Group/ClassicFoods Biz

Charlyn Renfrow
McLane Company

Bill Schumann
Bell County Commissioner

Seleese Thompson
Precious Memories Florist
& Gift Shop

Eric Tovar
Belton H-E-B Plus!

Sherri Woytek
Temple Community Clinic
(Ex-Officio)

IMPACT HIGHLIGHTS

2020-2021 COMMUNITY REPORT SUMMARY



TOGETHER, WE FACED A LOT OF CHALLENGES DURING THE PAST YEAR.

39%

of our neighbors were already struggling to make ends meet

COVID-19

caused loss, unemployment, closures, and financial strain

ECONOMIC FALLOUT

related to COVID-19 continues - and is worse for some

A WINTER STORM

created a disaster within a disaster

TOGETHER, WE ALSO CREATED A LOT OF IMPACT

COVID-19

When the pandemic hit, we convened partners, assessed needs, to provide support during this crisis.

17,184

people connected with COVID-19 related assistance through 2-1-1

112

received flexible emergency financial assistance

\$430,000

raised via the UWCT COVID-19 Response & Recovery Fund

18

small businesses received COVID-19 Relief grants

WINTER STORM URI

The February 2021 winter storm created a disaster within a disaster, hitting those already struggling the worst.



940

people called 2-1-1 for help related to Winter Storm Uri

54,000+

water bottles donated and distributed to those in need

\$66,125

raised via the UWCT Winter Weather Relief Fund

2-1-1 HELPLINE

From Hello to Help, the UWCT 2-1-1 helpline connects people with help, hope, and critical resources; 24/7/365.

91,553

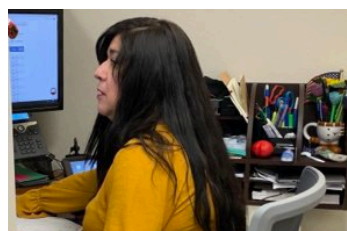
callers connected with help in 2020

2,265

veterans, active duty military, and their families connected to resources in 2020

10,320

senior citizens connected to services in 2020



LITERACY INITIATIVE

All children deserve the opportunity to reach their full potential and become the next leaders in our community

5,000+

books donated to support the 2021 Literacy Initiative

\$47,000+

total book value

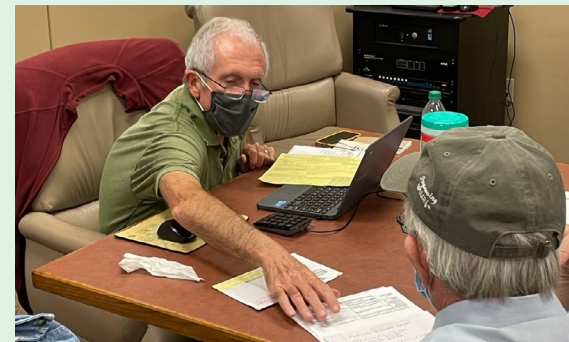
14

agencies and school districts received books



VITA - Volunteer Income Tax Assistance

VITA offers FREE tax preparation and filing help to individuals and families. IRS-certified volunteers ensure that clients receive 100% of their tax refund; no hidden costs or fees!



During the 2021 Tax Season:

920 returns filed with a **99%** IRS acceptance rate.

\$1.49M in tax refunds returned to Central Texans.

\$393,300+ returned in earned income tax credits.

\$291,300+ returned in earned income tax credits.

BRIDGES to WELLNESS & HEALTH

This program assists underinsured and uninsured clients who are unable to afford necessary prescriptions, equipment, and transportation.

900+

clients assisted through the program since 2015

DME

Durable Medical Equipment is the most requested type of assistance



COMMUNITY HUB PROGRAM

Community Hub case managers identify and connect patients to resources relating to housing, food, child/eldercare, transportation, utilities, employment, and other needs.

394

total clients referred to the program

85%

of clients felt confident handling their household problems independently after graduating from the program

VOLUNTEER with UWCT

UWCT strives to provide volunteer projects that are meaningful to both the volunteers and the recipients of volunteer work. UWCT partners with companies to provide volunteer experiences throughout the year.

\$60,410

overall value of total volunteer time in 2020



Text **UWCTvolunteer** to **41444** to register as a volunteer through UWCT!

2021 UWCT FUNDED COMMUNITY PARTNERS

CASA of Bell & Coryell Counties
Central Texas 4-C
Central Texas Children's Center
Central Texas Youth Services
Children's Advocacy Center of Central Texas

Communities in Schools of Greater Central Texas
Families in Crisis
Family Promise of East Bell County
Foster Love Bell County
Helping Hands Ministry of Belton

Our Lady of the Angels Maternity Shelter
Ralph Wilson Youth Club
Temple Community Clinic
Temple Housing Residential Corporation
The Salvation Army of Bell County