

Oregon's Mt. Hood Territory: Website and Map



BOOK A ROOM

CHECK-IN 

CHECK-OUT 

ALL LODGING  

Clackamas River

The Clackamas River flows some 83 miles from its headwaters in the Mt. Hood National Forest to its confluence with the Willamette River. Along its route, the Clackamas meanders through wild and scenic landscapes as well as rural and urban areas offering an array of recreational activities that include world-class whitewater rafting and kayaking, flatwater paddling, boating, floating, fishing, hiking, camping and cycling. Whatever the season, the **Upper** and **Lower** sections of the Clackamas River provide something fun and exciting for all. And if you're not sure on what to do or how to do it, book a trip with one of our **local guides**, who are experts on the changing conditions and offer insights into the best ways to recreate on the river.

Upper Clackamas River

Lower Clackamas River

Visit Estacada

Upper Clackamas

In September 2020 the Riverside Fire burned 138,126 acres, impacting a large area of Mt. Hood National Forest, along with the Lionshead, Bull Complex and Beachie Creek fires. Some 26 campgrounds and day-use sites, 24 trailheads and 37 trails were destroyed or severely damaged. The Oregon Department of Transportation (ODOT) closed Highway 224 to the public between milepost 31 and milepost 50.

On May 1, 2022, ODOT reopened Hwy 224 from milepost 31 to Ripplebrook, however many recreation and camping sites, United States Forest Service (USFS) roads and trails will remain closed until repairs can occur. With that said, there are still recreational opportunities available along the Upper Clackamas Corridor.

Scroll for helpful information to plan, prepare and recreate safely, including a map highlighting open sites, an **FAQ section** with information featuring local guides and outfitters offering whitewater experiences, as well as links for updated information from USFS and

View Mt. Hood Territory's Clackamas River Page at <https://www.mthoodterritory.com/clackamas-river>

To the left is an overview of the pieces included in the Clackamas River page, which was created as an informational hub in collaboration with land managers. Notes throughout this document highlight some key features of the page.

Thanks to the success of the Upper Clackamas work, we are working to add a section on the Lower Clackamas River as well, focusing on its own key issues around overused areas.

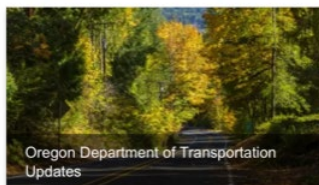
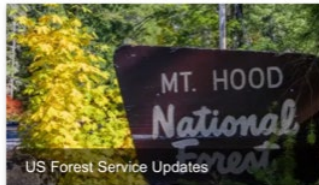
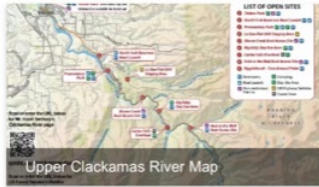
We provide background on wildfire damage and the recovery process, setting visitor expectations from the outset.



Oregon's Mt. Hood Territory: Website and Map

For more ideas of things to do in and around the area, check out [Visit Estacada](#) and our [Estacada community page](#).

Helpful Links



FAQs

The following are questions and answers that will help you plan your visit to recently reopened Highway 224, from Promontory Park to Ripplebrook. Changes are happening frequently, so for the most up-to-date and most comprehensive list of FAQs, visit the [USFS's page](#).

What is open/closed in the Upper Clackamas River Corridor? ([click to view](#))

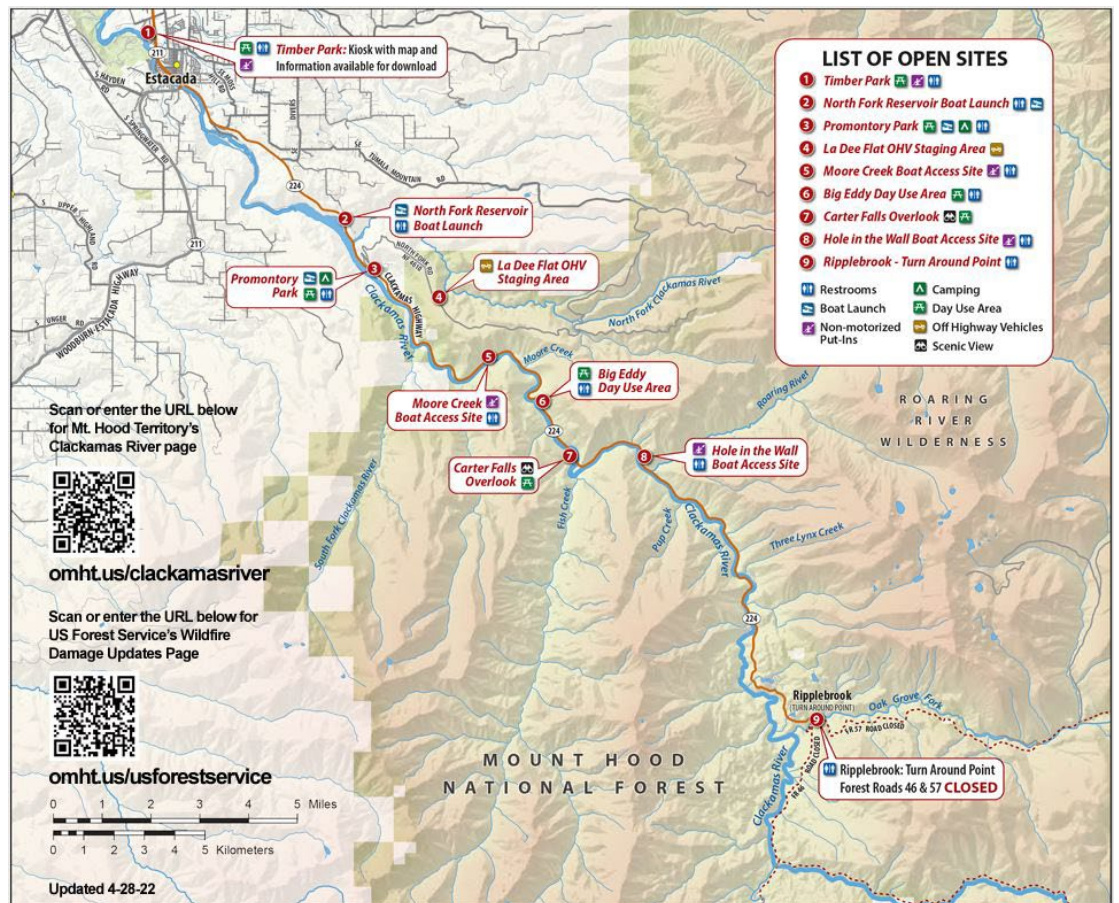
Will ODOT still be doing work along the corridor and will there be any delays? ([click to view](#))

Yes, hazard tree mitigation, rock scaling, restraining mesh installation, paving and cleanup work will continue throughout the summer. Expect delays as long as 20 minutes all along the corridor and plan for heavier than usual delays and traffic on weekends. For more information on ODOT's continued work in the HWY 224 corridor, [click here](#).

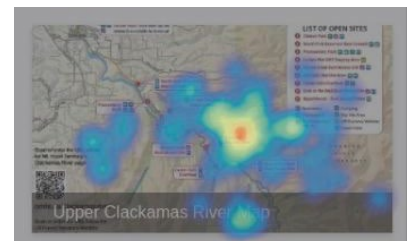
Can I access Timothy, Harriet, Clackamas or Olallie Lakes from Highway 224? ([click to view](#))

Where can I park? ([click to view](#))

So what can I do along the Upper Clackamas River Corridor? ([click to view](#))



The list of open sites recreation map is the most-clicked feature of the website ("heat map" to right shows clicks), and is also distributed on-site along Hwy 224. This map was contracted by Mt. Hood Territory and was informed (and is regularly updated) with input from local, state and federal land management partners. QR codes link to our web page and USFS for on-the-ground visitors.



Each FAQ expands when clicked to show the answer. The "heat map" to the right based on a small sample of users shows interaction with all of the FAQs, and tells us which questions are most pressing for users, helping inform our work and our land manager partners.

What is open/closed in the Upper Clackamas River Corridor? ([click to view](#))

Will ODOT still be doing work along the corridor and will there be any delays? ([click to view](#))

Can I access Timothy, Harriet, Clackamas or Olallie Lakes from Highway **? ([click to view](#))

Where can I park? ([click to view](#))

So what can I do along the Upper Clackamas River Corridor? ([click to view](#))