

FEBRUARY 2025

# CAMP LIFE

SANTEE LAKES RECREATION PRESERVE | MONTHLY E-NEWSLETTER

I REALLY  
LOVE  
IT WHEN  
MY  
WIFE  
LET'S ME GO FISHING

We love

February

almost as  
much as  
camping.

Thank you for  
spending time  
with us!



# THE GENERAL STORE & PARK OFFICE

## Hours:

**9:00AM-5:00PM**

**Every. Single. Day.**

**(except Thanksgiving, Christmas Eve & Christmas Day)**

**Fishing Permits, Fishing Poles**

**Bait, Merchandise**

**Ice Cream Novelties**

**Firewood, RV Supplies**

**Reservations**

**Snacks & Drinks**

**Ice**

**T-Shirts/Hats**

**Gifts**

**Love & Smiles**



*Valentine's Day* ♥

## V-Day Gift Ideas:

- Salt and Pepper Shakers
  - Campers/S'mores
- S'more Mug
- Gift Certificates for Camping/Cabins/Pedal Boats





NEWS



WE ♥ TROUT SEASON

Trout Season is in full swing! Check out [santeelakes.com](http://santeelakes.com) for stocking schedule.

**Have a romantic picnic!**

**Call the Park Office to book your picnic spot!**  
619.596.3141



WE WOULD ♥ YOUR VOTE!

**Beginning Monday, February 3 at 5PM you will be able to VOTE for us as "Best Hospitality & Recreation Business".**

**VOTE HERE**

**We would really appreciate it!**



**Follow us on social**



**@santeelakes**



**NEWS**



# Pedal Boats

will be \$14 on  
February 14th  
(Valentine's Day)  
Open every day  
10:00AM-4:00PM

**Store your boat, jet ski,  
trailers or motorhomes!**

There is storage  
available 24' and smaller  
and some 30' motorhome.  
Call the Office for  
details @ 619-596-3141.



**Wanna stay  
in July?**

Reservations are now open.

**PS. Feb. 28 @  
8PM opens  
August  
reservations  
online.**



**Book at  
santeelakes.com**



# NEWS

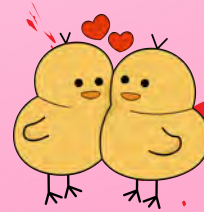
## Wood Ducks

**There are still some  
Adopt A Wood Duck Boxes  
Available! Visit  
[santeelakes.com](http://santeelakes.com)**



### Wood Duck FAQs:

- Clutch Size: 6-16 eggs
- Number of Broods: 1-2 broods
- Egg Length: 1.8-2.4 in (4.6-6.1 cm)
- Egg Width: 1.4-1.6 in (3.5-4.2 cm)
- Incubation Period: 28-37 days
- Nestling Period: 56-70 days
- Egg Description: Glossy creamy white to tan
- Condition at Hatching: Chicks hatch alert and with a full coat of down. A day after hatching they leave the nest by jumping out of the entrance.



**-All About Birds**

**WE**  **OUR FIREFIGHTERS!**

**We appreciate all you do to keep our  
communities safe.**

**Firefighters will fish for FREE  
the entire month of February and receive  
FREE entry into the Park.  
All you need is your valid ID.**

**WE THANK YOU!**



# NEWS

## New Staffers



**Malachi**



**Leslie**

**Park & Recreation Aides**



**Kyle**

**Park Maintenance Coordinator**



## PARK CONSTRUCTION UPDATE



### IVV Vault

The Advanced Water Purification (AWP) contractor has successfully completed the installation of the Interconnection Valve Vault (IVV) located on the east side of the park, between Lake 3 and Lake 4. All construction-related items will be removed from this area until late spring, when a pressure test will be conducted on the recently installed vault and pipe section.

### West Side Open Cut

The AWP contractor is scheduled to start the open cut installation of approximately 1,600 linear feet of pipe on the west side of the park, between Lake 1 and Lake 4. During this excavation and installation, traffic patterns and access for vehicles on the west side may be impacted. We encourage guests to be aware of flaggers and construction-related signage, as routes are subject to change. The anticipated duration of this activity is February - May 2025

For more information about this project please visit East County Advanced Water Purification's website at [eastcountyawp.com](http://eastcountyawp.com)

# CAMPING RATES & PROMOS!

**2025 Extended Stay (30 Nights) have been reduced.**

Standard Back-in Value	\$1,400
Standard Pull-in Scenic	\$1,450
Standard Pull-thru Value	\$1,650
Standard Back-in Scenic	\$1,550
Standard Pull-thru Scenic	\$1,750
Deluxe Back-in	\$1,850
Deluxe Pull-thru Value	\$1,950
Deluxe Pull-thru Scenic	\$2,000

## Special-Daily Stays

- **DISCOUNT IS VALID FOR RESERVATIONS MADE WITH ZIP CODES BETWEEN 91901-92199**
- **RESERVATIONS REQUIRE A TWO-NIGHT MINIMUM AND EXCLUDES HOLIDAYS & 30-NIGHT+ RESERVATIONS**
- **DISCOUNT GIVES 10% OFF YOUR CAMPING STAY**
- **DISCOUNT CAN BE COMBINED WITH GOOD SAM (YAY)**
- **DISCOUNT IS VALID FOR NEW RESERVATIONS WITH RESERVATION DATES BETWEEN OCTOBER 1, 2024- MARCH 1, 2025**
- **USE CODE "SDRESIDENT"**

## Special-Extended Stays

- **PROMO IS VALID FOR NEW 30 NIGHT RESERVATIONS THAT ARE MADE BETWEEN OCTOBER 1, 2024 – MAY 1, 2025**
- **YOU WILL RECEIVE \$100 OFF PER MONTH, UP TO YOUR FIRST THREE CONSECUTIVE MONTHS WITH US**
- **THIS OFFER IS VALID ONLY FOR NEW EXTENDED STAY CUSTOMERS**
- **WHEN BOOKING WITH OUR RESERVATION TEAM MENTION THE "EXTENDED STAY" RESERVATION SPECIAL**



# CAMPER EVENT CALENDAR

## SATURDAYS

### FEBRUARY 1

*Sports on the Lawn*  
*Flag Football*  
*Campground Lawn*  
*10:00AM-11:00AM*

*Campfire & S'mores*  
*We bring the s'mores!*  
*Lakeshore Fire Ring*  
*6:00PM-8:00PM*

### FEBRUARY 8

*Sports on the Lawn*  
*Badminton*  
*Campground Lawn*  
*10:00AM-11:00AM*

*Valentine's Day Craft*  
*Clubhouse*  
*2:00PM - 4:00PM*

### FEBRUARY 9

*Super Bowl Viewing*  
*We will bring the chips & salsa*  
*3:30PM Kickoff | The Clubhouse*  
*will be open at 2:00PM*

### FEBRUARY 15

*President's Day Weekend*  
*Sports on the Lawn*  
*Dodgeball*  
*Campground Lawn*  
*10:00AM-11:00AM*

*Lion's Club Breakfast*  
*8:00AM-10:30AM*  
*Paint by Numbers*  
*(Best for Adults & Teens but we will*  
*have something for the kiddos too)*  
*\$12 per person - Be sure to RSVP*  
*4:00PM-6:00PM*

### FEBRUARY 22

*Sports on the Lawn*  
*Camp games-think Sharks &*  
*Minnows, Steal the Bacon,*  
*Ultimate Keep Away*  
*Campground Lawn*  
*10:00AM-11:00AM*

*PJs and a Movie*  
*IF | PG*  
*Clubhouse*  
*4:00PM-6:00PM*

For details visit our Facebook page



XOXO



# VOLUNTEER SPOTLIGHT

## *The Stricklands*

**What do you like to do in your spare time?**

We like to ride our bikes, drive around on our golf cart, walk our very big puppy, Maisel, and walk around Santee Lakes and/or Pacific Beach.

**Favorite food?**

East Coast Pizza (The Bronx in Hillcrest comes pretty close)

**Favorite vacation destination?**

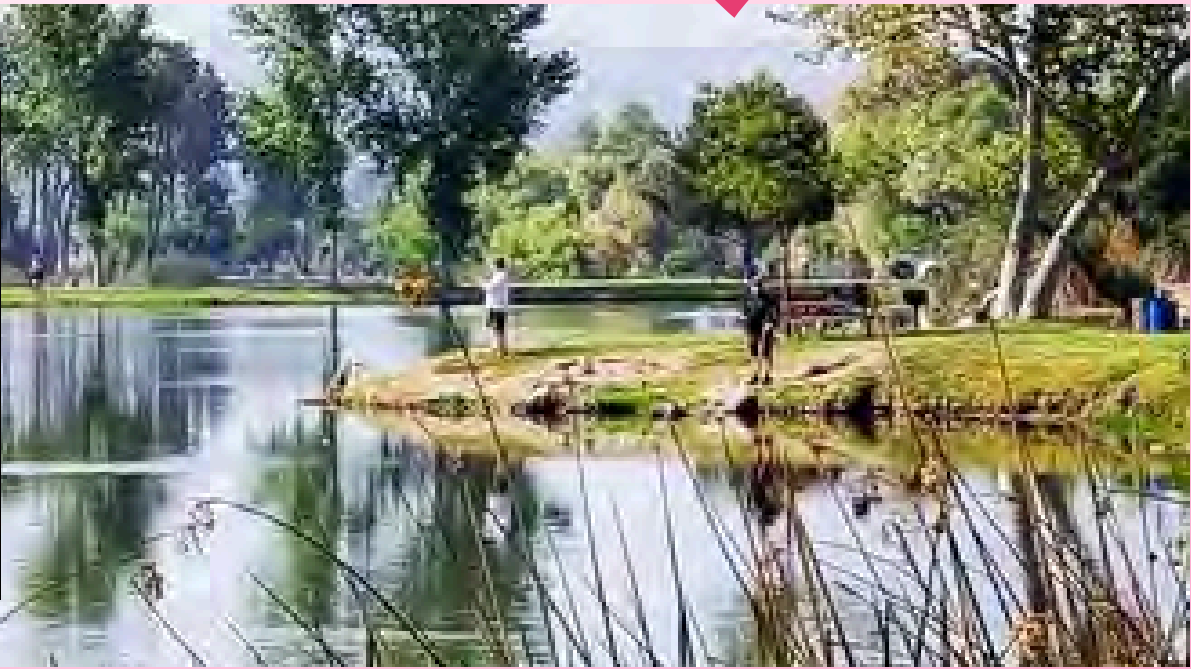
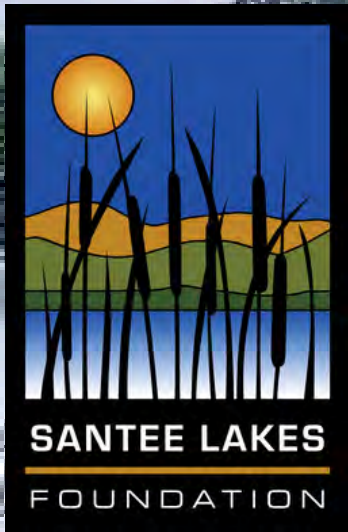
Barry likes to stay on his couch with his remote in hand while Saige and Lory like to explore new cities. Saige and Lory went to New England for the Fall last year, and it was spectacular.

**PM MAINTENANCE  
VOLUNTEERS**





# SANTEE LAKES FOUNDATION



**The Santee Lakes Foundation's primary purpose is to raise funds to support projects in design and to enhance the guest experience at Santee Lakes. The Foundation is committed to promoting the importance of outdoor recreation in conjunction with habitat maintenance through educational opportunities and financial support. The Foundation is dedicated in our mission to promote the importance of outdoor recreation, conservation, and environmental sustainability at Santee Lakes through charitable support in the following areas:**

**Recreational Programs**

**Habitat Restoration and maintenance**

**Environmental education programs**

**Park improvements and maintenance**



**All donations to the Santee Lakes Foundation are tax deductible. You can make your donation at the Santee Lakes Park Office or mail your donation to:**

**Tax Id: 27-1296867**

**Santee Lakes Recreation Preserve**

**Attn: Santee Lakes Foundation**

**9310 Fanita Parkway**

**Santee, CA 92071**

**Find out more at  
[santeelakesfoundation.org](http://santeelakesfoundation.org)**



# PSA



**There have been several coyotes spotted in the campground, mostly at night. If you see a coyote, you should exhibit caution, as they may be desperate for food and will attempt to get close if there is food nearby. If you are approached by a coyote, shout, wave your arms, and do what you can to make yourself appear bigger. If you are walking a small pet, pick it up. If you are walking a larger pet, keep it close to your side.**



**Please watch your speed in the Park & Campground and ensure you are in compliance with all regulatory street signs. This includes all E-bikes, bikes and basically anything motorized.**



# CAMPGROUND FAQS



- **Do campers need to purchase a fishing permit?**
  - Yes, campers will need a permit. You can purchase a permit at the General Store, Gate house, or Park Ranger.
- **How late are campers able to fish in Lake 6 and 7?**
  - Campers may fish until 11 PM.
- **Do we have to bring our own fire pit?**
  - Yes, please bring your fire pit, there are no ground fires allowed.
- **What time is checkout?**
  - 11:00AM is checkout for campers, Cabin guest's checkout time is 10:30AM.
- **Are we allowed to set-up a pet fence?**
  - No, pet fences are not allowed in the campground due to safety issues such as unattended/unleashed dogs, and coyotes in the Park.
- **Where is the Campground Bark Park located?**
  - The Bark Park is located in the very north west corner of the Campground.
- **Can we use an inflatable pool?**
  - No, due to safety issues, inflatable pools are not allowed.
- **What time is quiet time?**
  - 9:00PM is Campground quiet time.
- **What time does my fire have to be out?**
  - Please have your fire extinguished by 10:00PM
- **How many people are allowed on my campsite?**
  - Campers can have a maximum of 6 people on each site.
- **Can we hang up a hammock?**
  - No. Hammocks can be harmful to trees, as well as other safety issues.