



2018

NEXT/RADIUS Shelf Mount CCU

The Next / Radius shelf mount CCU is open for orders and is available to ship mid September. CCU information on pages 3 and 7.

September 11, 2018



VantageRadius™

Radar technology and streaming video for stop bar detection

Included with the
VantageRadius system



Forward-fire radar
for accurate vehicle detection



High resolution video streaming for
intersection monitoring



Automated data collection



Radar presence detection

VantageRadius™ is the newest sensor in the Iteris Vantage family that utilizes radar technology for vehicle detection at the intersection stop bar. VantageRadius builds on the success of the Vantage Vector hybrid detector offering a combination of radar and video designed specifically for stop bar detection at the intersection.

Using radar and Iteris' enhanced detection algorithms ensures that VantageRadius can accurately detect vehicles and vehicle speeds as they approach the intersection, enabling the intersection to operate at its peak efficiency. The system is built on the simple-to-use Vantage Next® platform and continues the Iteris tradition of ease of installation and simple configuration.

Monitor your intersection with live video stream

Included with the VantageRadius sensor is a high resolution digital camera that streams live video back to a central management location, providing agencies with the ability to monitor and take action on the operation of their intersection. This video stream can also be used in place of other surveillance cameras to stream live video to your traffic management center video wall and mobile applications from Iteris.

VantageRadius™

Radar technology and streaming video
for stop bar detection

Benefits

- Low life cycle cost
- Easy to install, configure, and maintain
- Remote intersection viewing
- Visual feedback to ensure sensor is operational
- Low power operation
- Multiple CCU configurations available

SPECIFICATIONS

Sensor Head

Weight	3lbs (1.4kgs)
Sensor Dimensions	6.5"W x 5.5"T x 8.5"D (165mm x 140mm x 216mm)
Environmental	IP67 rated enclosure

Radar Sensor

Frequency	24 GHz (K-band)
Tracked Objects	64
Detection	Across 10 lanes of traffic
Distance	300+ feet (90 m)
Coverage Angle	+/- 35 degrees
Power Consumption	48VDC, 5W max.
Connections	Terminal Block

Processor

Power	12 or 24 VDC, 5W typical
Video Output	Compressed Digital Stream
Detector I/O	4 open-collector outputs and 4 inputs per Processor card
	12 or 24 VDC, 5W typical
	64 total outputs /64 total inputs using Extension modules
Status Indicators	Primary power
	Video input status
	Detection outputs
Communications	Ethernet

Camera

Sensor	1/3" CMOS, 1.3MP, WDR
Lens	Fixed Zoom lens, 70° viewing angle
Minimum Illumination	0.1 Lux

19" Rack Mount CCU

Power	110/220 60/50 Hz 20 W Max
Dimensions	19"L x 8.75"D x 1.75"H (483mm L x 222mm D x 45mm H)
Weight	3.9 lb (1.77kg)
Configurations	Up to 4 sensors, processors required

NEMA Shelf Mount CCU

Power	48VDC @ I20W
External Power Supply	DIN Rail 110-240VAC
Dimensions	4" L x 10.5" D x 10.5" H (102mm L x 267mm D x 267mm H)
Weight	6lbs (2.72kgs)
Configurations	Up to 4 sensors, processors required TS2; 2 sensor or 4 sensors, no processors required

General

Op. Temperature	-35°F to +165°F (34°C to +74°C)
Humidity	0% to 95% non-condensing
Vibration	0.5G, 3 axes, 5-30Hz
Shock	10G in all 3 axes
Regulatory	NEMA TS-2 compliant FCC part 15, Class A 3 years limited warranty



Copyright © 2018 Iteris, Inc. All rights reserved.

NOTICE: Iteris, Inc. reserves the right to change product specifications without notice. Information furnished is for informational purposes only. This information may not be complete or the latest revision. For the most up-to-date information, please contact Iteris, Inc.

>>
NEMA Shelf-Mount CCU



iteris®



Vantage Next[®] Camera

State-of-the-art video detection that delivers superior performance on a scalable platform

Benefits of the VantageNext system



Includes SmartCycle[®] and PedTrax[™]
Provides automated bicycle and pedestrian counts



Single CAT5 sensor cable for ease of installation



Captures traffic data including turning movement counts



State-of-the-art video detection system

Vantage Next[®] is Iteris' next generation video detection system that capitalizes on the latest technology. Vantage Next uses a powerful processor that enables future functional growth while maintaining proven Iteris video detection performance and reliability. The architecture supports expanding ITS applications and easily integrates with existing and future technologies.

Today's traffic engineers and planners need real-time data to ensure maximum efficiency and effectiveness of traffic management solutions. Vantage Next captures all the data necessary to allow the local traffic controller to manage the intersection remotely while delivering network-wide data back to the traffic management center.

Simple to install and set up

Vantage Next improves the lifecycle cost by simplifying the cabling between the camera and the traffic cabinet and within the cabinet itself. No special tools are required for installation. Exceptional vehicle detection through advanced algorithm design.

Vantage Next® Camera

State-of-the-art video detection that delivers superior performance on a scalable platform

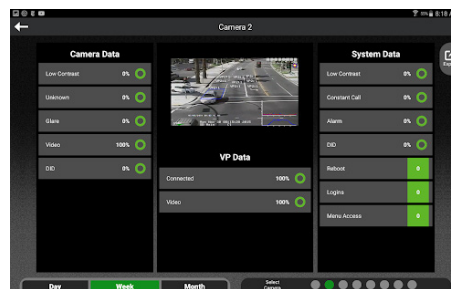
Benefits

- Low lifecycle cost
- Easy to install, configure, and maintain
- CAT5 cable connections
- Simple and convenient access
- Flexible and scalable
- Automatic traffic counting
- FOV set up from the ground

SPECIFICATIONS

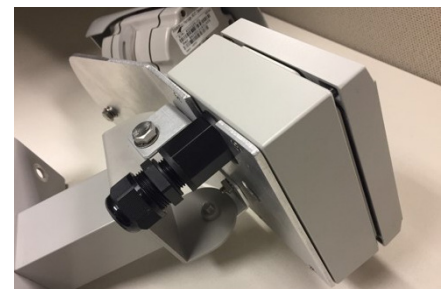
Imager	768 x 494 effective pixels 470 TV lines minimum Automatic white balance >50 dB S/N ratio Dynamic range >100 dB .1 lux capable 3D-DNR Noise Reduction	Weight	4.8 pounds (2.2 Kg), including camera, lens, using, sunshield, and mounting bracket
Lens	Focal length for a horizontal field of view ranging from 5.4°tele to 50.7° wide 12x zoom	Environment	
Focus	Adjustable/auto focus	Temperature	-35°F to +165°F (-34°C to +74°C)
Connections	Terminal block type connection RJ45 option	Humidity	0% to 95% non-condensing
Physical		Vibration	0.5G, 3 axes, 5-30Hz
Dimensions	16" (406 mm) L x 6.25" (159 mm) W x 7" (178 mm) H (without mounting bracket)	Shock	10G in all 3 axes
		Heater	Indium Tin Oxide, proportional power
		Power	48VDC, 5W
		Communications	DCAM I/F
		Environmental	IP-67
		Regulatory	NEMA TS-2 compliant. FCC part 15, Class A
		Warranty	3 years limited warranty

Vantage Next Viewer and Next Setup Tool



Windows is a registered trademark of Microsoft.
iOS is a registered trademark of Apple.

Optional RJ45 bulkhead connection



Copyright © 2018 Iteris, Inc. All rights reserved.

NOTICE: Iteris, Inc. reserves the right to change product specifications without notice. Information furnished is for informational purposes only. This information may not be complete or the latest revision. For the most up-to-date information, please contact Iteris, Inc.

iteris®



Vantage Next® Platform

The next generation of an integrated detection system

Features of the Vantage Next platform



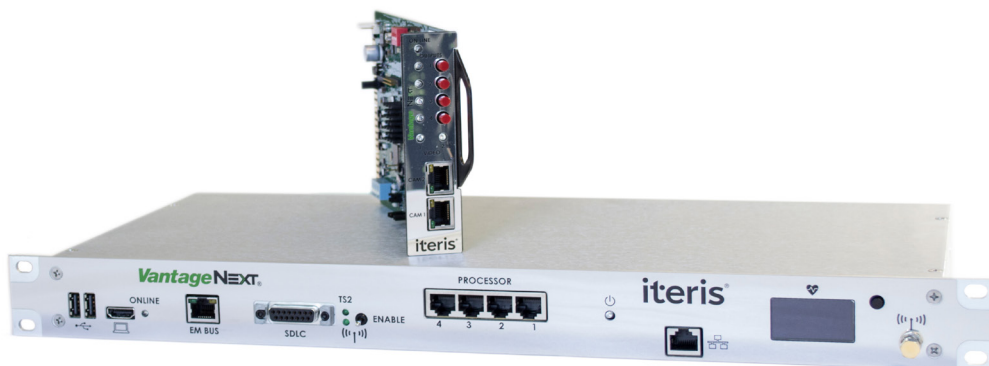
Integrated multi-feature control cabinet system for simple installation



Sending high-resolution streaming video to a traffic management center



Form factor options for different cabinet configurations



State-of-the-art platform

Vantage Next® is Iteris' next generation video detection platform that capitalizes on the latest technology. Vantage Next uses a powerful processor that enables future functional growth while maintaining proven Iteris video detection performance and reliability. The architecture supports expanding ITS applications and easily integrates with existing and future technologies.

Easy setup and Configuration

With a user-friendly configuration software and fewer components, the Vantage Next platform sets the bar for simple installation and ease of use.

Surge Panels and Extenders



Vantage Next® Platform

The next generation of an integrated detection system

Benefits

- Easy to install, configure and maintain
- CAT5 cable connections
- Simple and convenient access
- Flexible and scalable
- Multiple CCU configurations available

SPECIFICATIONS

Video Processor

Power	I2 or 24 VDC, 5W typical
Video Output	Compressed Digital Stream
Detector I/O	4 open-collector outputs and 4 inputs per processor card
	128 total outputs /64 total inputs using extension modules
Status Indicators	Primary power
	Video input status
	Detection outputs
Communications	Ethernet, DCAM I/F

CCU

Communications	Ethernet
	USB Type A (x2)
	Wi-Fi
	SDLC communications
Video Output	MPEG-4 and H.264
	Resolution DI (720x480 pixels)
	Fixed frame rate of 15fps

I9" Rack Mount

Power	110/220 60/50 Hz 20 W Max
Dimensions	19" L x 8.75" D x 1.75" H (483mm L x 222mm D x 45mm H)
Weight	3.9 lb (1.77kg)
Configurations	Up to 4 cameras, video processors required

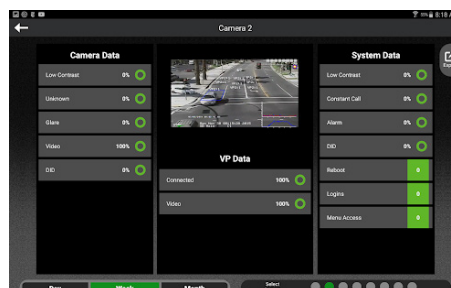
NEMA Shelf Mount

Power	48VDC @ 120W
External Power Supply	DIN Rail 110-240VAC
Dimensions	4" L x 10.5" D x 10.5" H (102mm L x 267mm D x 267mm H)
Weight	6lbs (2.72kgs)
Configurations	Up to 4 cameras, video processors required
	TS2; 2 cam or 4 cam, no video processors required

General

Op. Temperature	-35°F to +165°F (-34°C to +74°C)
Humidity	0% to 95% non-condensing
Vibration	0.5G, 3 axes, 5-30Hz
Shock	10G in all 3 axes
Regulatory	NEMA TS-2 compliant
	FCC part 15, Class A
Warranty	3 years limited warranty

Vantage Next Viewer and Next Setup Tool



Windows is a registered trademark of Microsoft.
iOS is a registered trademark of Apple.



Copyright © 2018 Iteris, Inc. All rights reserved.

NOTICE: Iteris, Inc. reserves the right to change product specifications without notice. Information furnished is for informational purposes only. This information may not be complete or the latest revision. For the most up-to-date information, please contact Iteris, Inc.

iteris®



Vantage Vector®

The power of video and radar sensor fusion

Benefits of the Vantage Vector



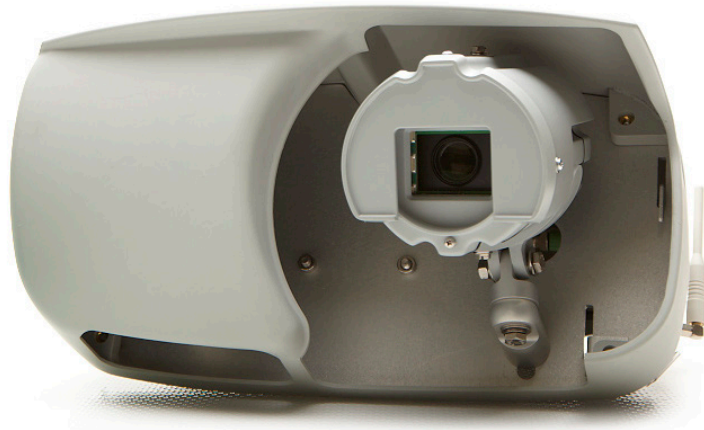
Dilemma zone detection



Enhanced data information includes vehicle volume, speed, and distance



Single-sensor for stop bar and advanced detection



The proven power of video...and more

Vantage Vector® is an all-in-one vehicle detection sensor with a wide range of capabilities: stop bar detection, advanced-zone detection, and sensing that enables advanced safety and adaptive control applications.

It includes all the proven benefits of Iteris video detection: high accuracy, high availability, the video image for remote viewing, no trenching or pavement cutting for installation, and SmartCycle® technology.

Enhanced dilemma-zone precision

Vantage Vector offers high precision for dilemma zone detection by integrating the video field-of-view with radar sensing. Enhanced information includes the number of vehicles, speed, and distance in user configurable zones, that can be used for special applications.

Extended range for higher speed approaches

The extended range of the advanced zone includes enhanced count, speed, and occupancy (CSO) measurements, where data from advanced detection zones is desired.

Vantage Vector®

The power of video and
radar sensor fusion

More Benefits

- Performs in the most challenging lighting conditions
- Advanced self-cleaning camera lens ensures lower maintenance
- Provides for advanced intersection safety features such as Dilemma Zone and all Red Protect with compatible signal controllers
- Advanced radar detection to over 500 feet from sensor head

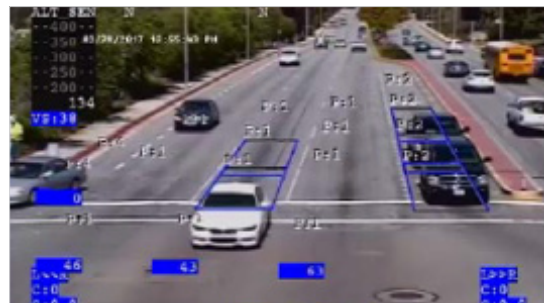
SPECIFICATIONS

Vector Sensor

Image Sensor	1/4" CCD
	380,000 effective pixels
	550 Horizontal TV lines
	> 50 dB S/N ratio
	1.0 lux minimum illumination
	2D/3D Noise Reduction
	Automatic white balance
	1 Vpp (sync negative)
Lens Heater	Indium Tin Oxide, proportional power
	Frequency - 24GHz (K-band)
Radar	Accuracy - Speed 0 to 150 mph \pm 1 mph
	(240 kph \pm 1.5 kph)
	Tracked objects - Up to 20
Physical	Detection - Across 4 lanes of traffic
	Weight - 10lbs (4.55 kg)
	Size - 14"H x 15"W x 17"D
Operating Temp.	(35.6cm x 38.1 cm x 43.2 cm)
	EPA - Less than 1.5 sq.
	IP67 rated enclosure
Humidity	-35°F to +165°F (-37°C to +74°C)
Vibration	0 - 100% RH
Shock	0.5G, 3 axes, 5-30Hz
Regulatory	10G in all 3 axes
Communications	FCC part 15, Class A
	NEMA TS-2 compliant
Warranty	Via data embedded on video signal
	3 years limited warranty

Vector on Edge2 Platform

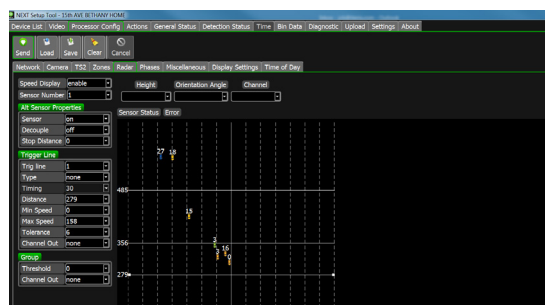
Electrical	110/220 VAC, 10W (typical), 20W (peak)
Radar	Tracked Objects - up to 20
Comms	Via data embedded on video signal
Connections	Terminal Block
Setup/Config	Mouse & Monitor or VRAS
Processor	Edge2



Vector on
Edge2 Platform

Vector on Next Platform

Electrical	48VDC 10W(typical), 20W (peak)
Radar	Tracked Objects - up to 60
Comms	RS485
Connections	RJ45/Terminal Block
Setup/Config	Next Setup Tool
Processor	Next with CCU



Vector on
Next Platform
(Setup Tool)



Copyright © 2018 Iteris, Inc. All rights reserved.

NOTICE: Iteris, Inc. reserves the right to change product specifications without notice. Information furnished is for informational purposes only. This information may not be complete or the latest revision. For the most up-to-date information, please contact Iteris, Inc.

iteris®