

# Drive

CUE:

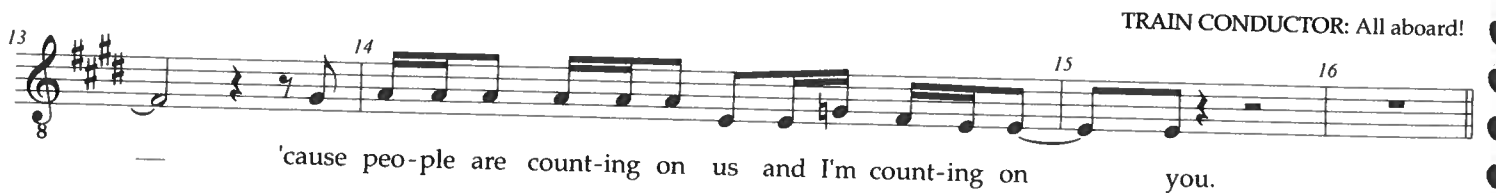
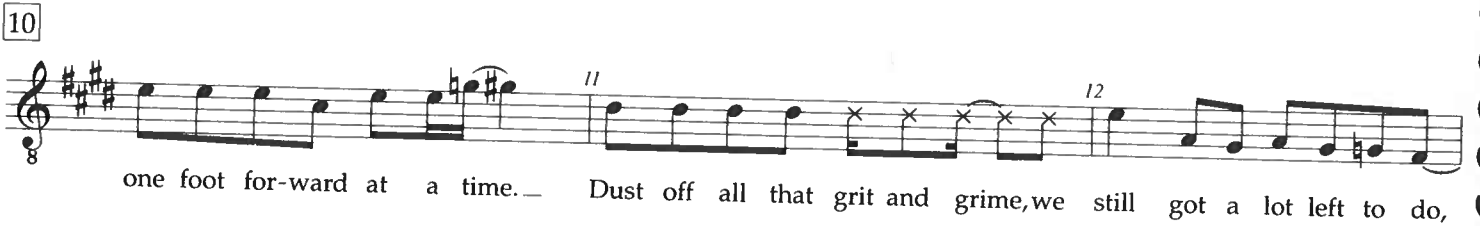
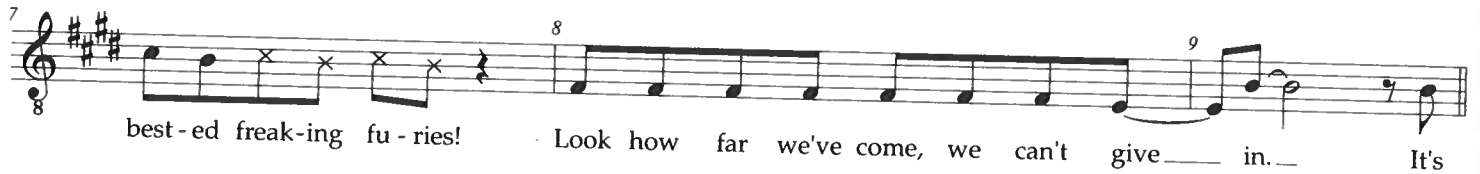
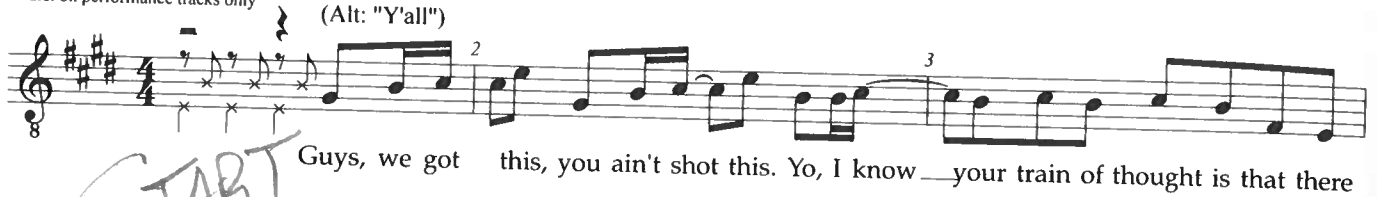
GROVER: Now, aren't you glad  
you apologized? We are totally  
killing this quest. [MUSIC]

(Grover, Annabeth, Percy, Ares, Chorus)

Eastbound and Down Y'all ♩ = 116 (Swing 16ths)

drs. on performance tracks only

(Alt: "Y'all")



TRAIN CONDUCTOR: All aboard!



22  23 24

work - ing and we're cop - ing, — so pe - dal to the met - al and drive. —

TRAIN CONDUCTOR: St. Louis! Everybody off!

(They run into ECHIDNA with a pet carrier. Inside we hear adorable yips.)

ANNABETH: Look, the Gateway Arch!

PERCY: Look, a lady with a puppy! Is that a Chihuahua?

(He reaches into the pet carrier. The yips turn to snarls as it tries to bite off his arm.) [JUMP TO M. 26; any beat]

ECHIDNA: It's a Chimera.

(She cackles as GROVER and ANNABETH free PERCY and escape.) [GO ON]


VAMP - Jump on cue

Orch.  26 27

*f*


ANNABETH:

That was freak -


28 PERCY: GROVER:  29 30

- y, that was scar - y. Yo, guys are you a - ware we keep sur - vi - ving ev - 'ry creep - y craz - y

FARMER: Hop on my tractor!

ANNABETH:  32 33


Like an ar - row from O - ri - on, keep on straight and keep on try - in', no

(GROVER:) GROVER, PERCY:  34 35

thing. — Like an ar - row from O - ri - on, keep on straight and keep on try - in', no

(A NEWSCASTER reports live from a storm.)

NEWSCASTER: As you can see, Bob, we've got thunder and flooding and hurricane level winds. We urge all citizens to stay off the road and *DON'T*—

4X  36 37

Orch. (tap) *mp*

Fates are ev - er gon - na cut our — string.

Fates are ev - er gon - na cut our — string.