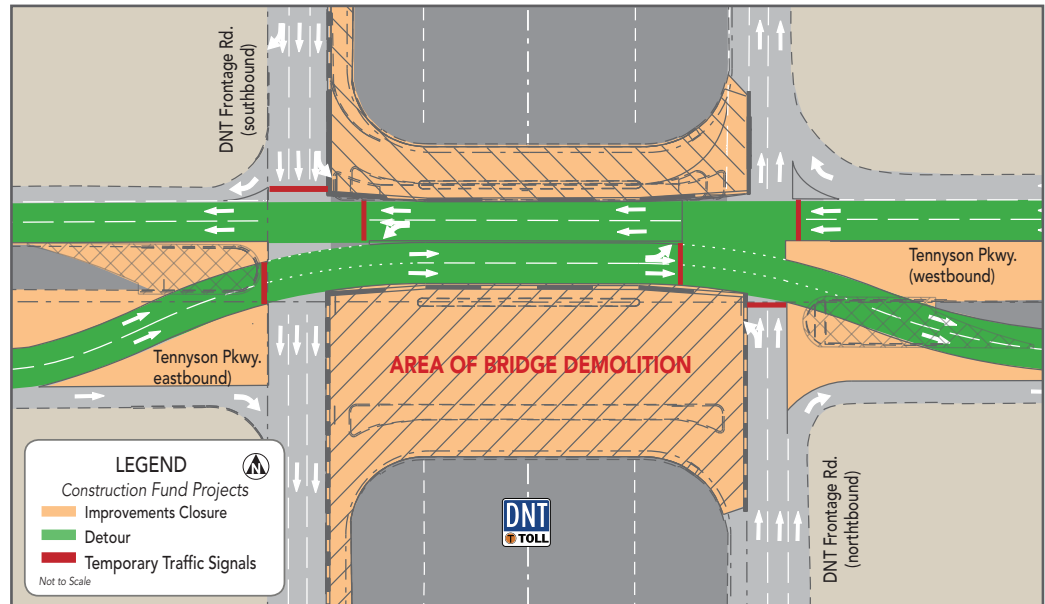


DALLAS NORTH TOLLWAY IMPROVEMENT PROJECTS

SOUTH PORTION OF TENNYSON BRIDGE TO BE DEMOLISHED

NTTA will demolish the remaining half of the old Tennyson Parkway bridge over the Dallas North Tollway. The bridge is being demolished and reconstructed in phases to accommodate the addition of a fourth lane in each direction of the DNT. The north portion was demolished in June 2016, reconstructed and reopened to traffic in January 2017. The south half is now scheduled for removal.



CLOSURE:

Closures needed to complete the demolition of the south portion of the bridge are below.

Beginning at 11 p.m. Friday, March 31 through 5 a.m. Monday, April 3 (Continuous closure):

- All northbound lanes of the DNT from the Spring Creek Parkway exit to the Headquarters Drive entrance ramp
- All southbound lanes of the DNT from Gaylord Parkway to the Spring Creek Parkway entrance ramp
- The southeast-bound and northwest-bound direct-connector ramps from the SRT to southbound DNT
- The northbound DNT direct-connector ramp to southeast-bound and northwest-bound SRT
- The northbound entrance ramps from Windhaven Parkway and Spring Creek Parkway
- The northbound exit ramps at Legacy Drive and Headquarters Drive
- The southbound entrance ramps from Gaylord Parkway, SH 121 and Legacy Drive
- The southbound exit ramps to Legacy Drive and Spring Creek Parkway

NOTE:

Tennyson Parkway over the DNT will be open to traffic. The structures are separated and demolition of the south half of the bridge will not impact traffic on the north portion.

Changeable message signs will be placed prior to lane closures in the construction area. Law enforcement officers also will be on duty to assist motorists.

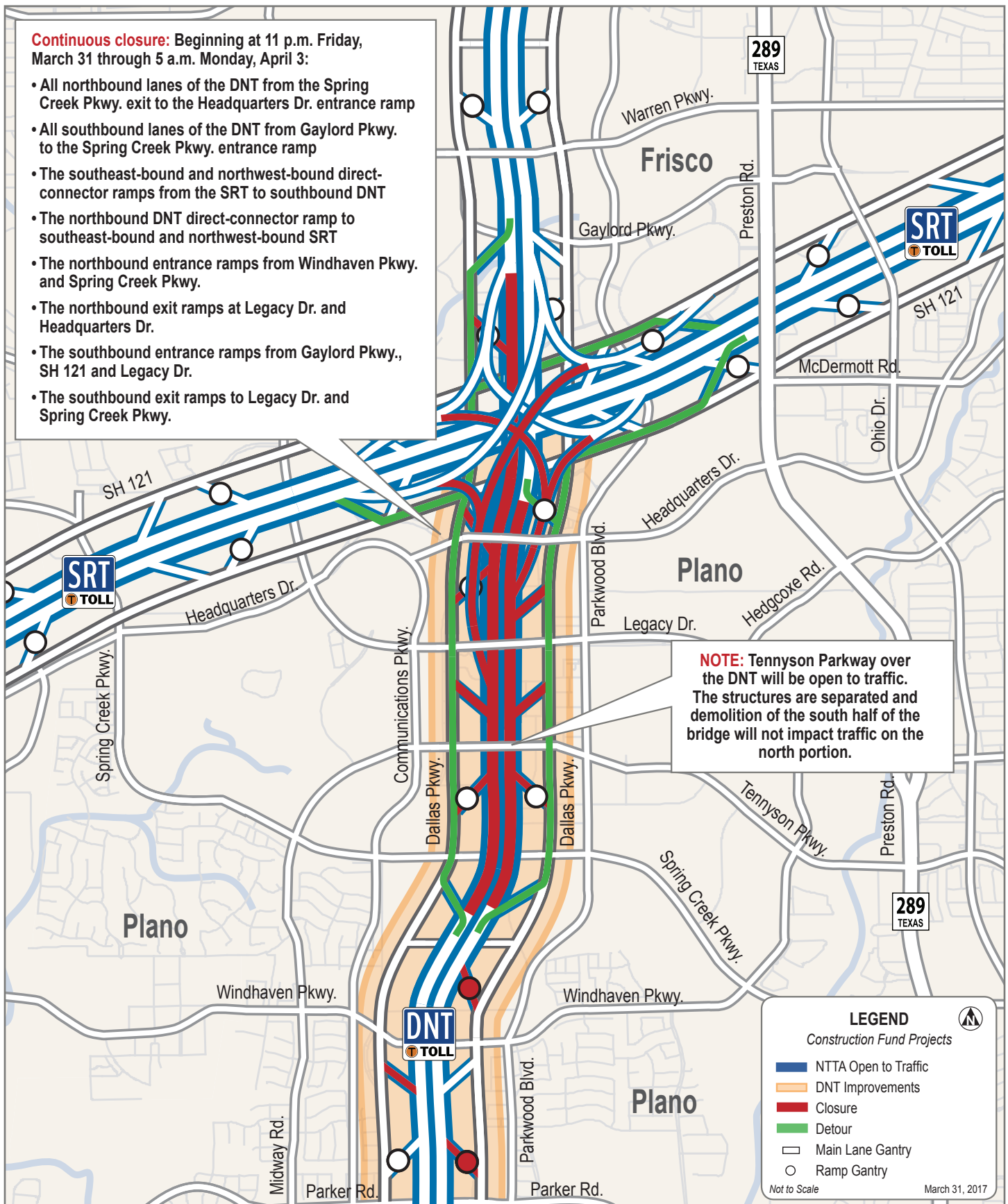
All closures are subject to weather conditions and will be postponed, if necessary. NTTA coordinated this closure with the cities of Plano and Frisco. Delays are expected, and motorists are urged to use caution in the construction area.

NTTA appreciates the public's patience during the ongoing construction.

For more information about upcoming lane closures and traffic-related news along NTTA roadways, go to the "Scheduled Lane Closures" link at www.ntta.org.

STAY CONNECTED

Visit: ProgressNTTA.org | Email: ProgressNTTA@NTTA.org | Call: (972) 628-3134



STAY CONNECTED

Visit: ProgressNTTA.org | Email: ProgressNTTA@NTTA.org | Call: (972) 628-3134