



04737 Fuller Road, East Jordan, MI 49727
(231) 536-3369 | www.miravenhill.org
info@miravenhill.org

Raven Hill Discovery Center is a 501(c)(3) tax-exempt corporation.

Mission: Raven Hill provides a place that enhances hands-on and lifelong learning for all ages by connecting science, history & the arts.

To: Friends and Family everywhere
From: Cheri and Raven Hill
Date: January 30, 2021
Re: Weekly NEWS Update

Hello, Everyone!

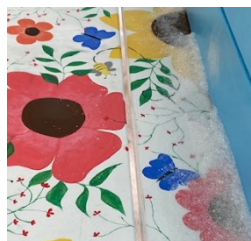
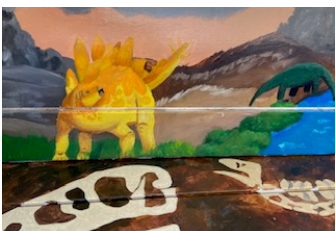
Spring is coming! The days are getting longer and Raven Hill is waking up, as evidenced by all the activity here this week!

As I said last week, Raven Hill is frequently the recipient of some intriguing items. This week we were gifted with a beautiful baby buggy. It reminded me of our upcoming summer exhibit.

In 2019, the Smithsonian Museum on Main Street (MoMS) program named Raven Hill Discovery Center as one of ten sites in the United States to participate in a pilot project on the national and local history of work. Raven Hill is collaborating with Smithsonian staff to design, develop and present the ***Labor Days: A History of Work*** exhibit at the Center.

The exhibit was rescheduled from last summer and is now planned for **August 14 to September 30 of 2021**. If we are not able to be open to the public this summer, scheduling visitors may be an option and then we can be open to everyone in 2022. Either way, ***Labor Days*** will proceed! This ***Labor Days*** exhibit is a chance to highlight, for the community-at-large, the importance of northern Michigan's work history and its connections to the rest of the state, nation and world. The exhibit will be open to the public daily—if the coronavirus, vaccinations and government guidance allow.

Last winter, “pre-pandemic”, East Jordan Middle/High and Elementary School art teachers, Mike Schroeder and Darrin Podskalny, offered to involve their students in decorating benches to be used at various outdoor sites around Raven Hill. Kay Holley of the Episcopal Church of the Nativity in Boyne City, arranged for the donation of ten benches. Three of the benches are painted, three are in progress and there are four more available. Anyone interested in painting a bench for the Center can give Cheri a call at 231.675.6025. The benches will be placed outdoors at strategic locations on Raven Hill grounds, offering visitors a place to stop and catch their breath. Thank you to everyone involved.



Raising children is work! And for a kid, play is preparation for the future and real work. Look for the ***Labor Days*** section, “At any age”, coming soon. “Historic Overlay” photo courtesy Boyne Heritage Center.

Next summer, you can rest and relax by Jurassic Park, while sitting on a T-rex skull and turning your back to a bunch of dinosaurs. You can sit amongst the flowers by the Medicinal Gardens or even sit for a spell on the colored “piano keys” near the Earth Tones Music Garden.



This Math Panel contains rotating wheels displaying different numbers and mathematical symbols, so you can create and solve your own math problems at one of the learning stations on the proposed **Connections Trail**!

We continue to explore ways to insure the safety of staff and visitors inside our buildings. However, we have come to the realization that expanding our outdoor hands-on exhibits could be a “win-win” situation. It would allow us to open more safely and at the same time help students and families get outdoors. They can enjoy some hands-on learning, tempering the large amount of computer and indoor time that everyone has experienced lately.

Raven Hill’s proposed **Connections Trail** will offer outdoor learning stations along a mulched pathway. By enhancing formal education with interactive opportunities, the **Connections Trail** will help visitors of all ages explore science, history and the arts at various hands-on stations. Children understand best when they can become actively involved and the same holds true for adults. The 36 new and existing learning stations along the half-mile **Connections Trail** will encourage health and well-being, as visitors walk the trail on Raven Hill’s main campus. The new trail will allow Raven Hill to “hedge its bets”, by reducing

the risk of viral exposure and increasing the likelihood of a successful reopening. No matter what the future brings in terms of pandemics, an outdoor trail with learning stations will draw families, small groups, students, scouts, tourists and the community to learn, create, grow and play **safely**.

The Baiardi Foundation recently pledged \$5,000 toward the **Connections Trail** project. The Center is busy fundraising in anticipation of building the trail this spring. If you would like to get involved and support this exciting project, call Cheri at 231.675.6025, email info@miravenhill.org or you can donate on the Center’s website.



Speaking of nature and the out-of-doors, residents here in northern Lower Michigan care about water and land. Raven Hill is interested in hosting a Zoom presentation on climate change. Robin Gleason, former teacher, was trained by former Vice President Al Gore to be a speaker for the Climate Reality Leadership Corps. This is an



Logs (above) can serve as balance beams. Round “tree cookies” (left) might become a place to jump “over a river” from one to another or they could be arranged to play hopscotch.

organization whose purpose is to educate the public and inspire action on climate change. Robin presents a program titled “Must we, Can we, Will we change?”. If you would like to learn more from the Climate Reality Leadership Project, let me know, so I can schedule a Zoom session highlighting northern Michigan. “Be the change that you wish to see in the world.”--Mahatma Gandhi

If you know someone who would like to receive weekly updates, please send their email addresses to info@miravenhill.org and I will add their names. Previous updates are available on our website — www.MiRavenHill.org

Remember, I enjoy hearing from you, so text me or call my cell at 231.675.6025. You can also email me anytime. My email address is cheri@miravenhill.org. Meanwhile, play it safe, even if you have had the vaccine: wash your hands often, wear your masks, socially distance and stay away from crowds. And hug your loved ones. Don’t take your family and friends for granted. You never know what the future holds.



Scenes like this remind us why it is important to take care of our earth. Photo by Tim Leach

Cheri