



Long Island and Sandplain Grassland Management Meeting and Tour **September 24, 2019 - 8:30 a.m. - 4:00 p.m.**

September 24, 2019 - Wertheim National Wildlife Refuge Visitors Center - Shirley, New York

- 8:30 a.m. **Registration w/Light Refreshments**
- 9:00 a.m. **Welcome and Introductions**
- 9:10 a.m. **Grassland Managers Introduction Slam** (3-5 minute/slide introduction of land manager and their entity, grassland, management success and challenges)
- 10:30 a.m. **Break**
- 10:45 a.m. **Synthesis of Management Experiences and Promotion of Future Collaborations by a New Regional Sandplain Grasslands Network** - Chris Neill, Senior Scientist, Woods Hole Research Center, Woods Hole, Massachusetts and Karen Lombard, Director of Stewardship and Restoration, Massachusetts Chapter of The Nature Conservancy.
- 11:00 a.m. **Restoring Fire to a Globally Rare Ecosystem in an Urban Pine Barrens.** Neil Gifford, Conservation Director, Albany Pine Bush Preserve Commission, Albany, New York.
- 11:15 a.m. **Monitoring Techniques for Advancing Adaptive Grassland Management** – Sara Bois, Director of Research and Education, Linda Loring Nature Foundation (LLNF) Nantucket Island, Massachusetts and Karen Beattie, Director of Science and Stewardship, Nantucket Conservation Foundation, Nantucket Island, Massachusetts.
- 11:30 a.m. **The North Atlantic Fire Science Exchange (NAFSE) as a Resource for Grassland Management** - Kathy Schwager, Ecologist, Brookhaven National Laboratory, Upton, New York.
- 11:45 a.m. **Speaker Panel Q & A**
- 12:05 p.m. **Networking Lunch w/Continuation of Grassland Manager Introduction Slam**
Lunch provided by Central Pine Barrens Joint Planning and Policy Commission
- 1:00 p.m. **Travel to Sayville Grassland**
- 1:30 p.m. **Sayville Grassland Tour** - *The Sayville grassland is recognized as one of the most ecologically important of the region and also encompasses important cultural history lending to its high habitat quality. The tour will showcase the grassland's unique plant diversity including the largest population of Sandplain agalinis (*Agalinis decemloba*) on Long Island, the importance of land use history in determining grassland quality, conversion of forest to grassland, prescribed fire, the impacts of deer browse and exclusion fencing.*
- 4:00 p.m. **Wrap - Up**
- 6:00 p.m. **Group Dinner** (Pay on Your Own)- Location TBD

Grassland and Ecotypic Plant Material Production Tours

September 25, 2019 - 9:00 a.m. - 2:30 p.m.

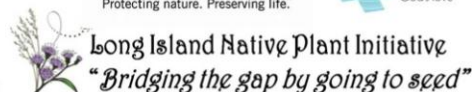
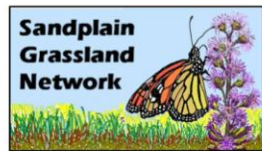
- 9:00 a.m. **Long Island Native Plant Initiative Ecotypic Seed and Plant Production & Sisters of St. Joseph's Grassland Reclamation Project** - Sisters of St. Joseph, 1725 Brentwood Road, Brentwood, NY 11717. *Concepts of ecotypic seed production including target species, seed collection boundary delineation, genetic and ethical seed collection criteria, seed cleaning and storage, plant propagation, and partnerships/resources to help supply needed plant materials for restoration will be explored during this visit to the LINPI plant materials program. In addition, grassland reclamation practices implemented by Rusty Schmidt of Nelson, Pope and Voorhis for the Sisters of St. Joseph in an effort to replace lawn with increased native habitat will be highlighted.*
- 10:15 a.m. **Break and Drive to Hempstead Plains** (A 20 minute drive)
- 10:45 a.m. **Hempstead Plains Grassland Tour** – Friends of Hempstead Plains Visitor Center, Garden City, NY *The Hempstead Plains is one of the most iconic grasslands and the only prairie east of the Appalachian Mountains. At one time, it covered over 40,000 acres but today stands at approximately 24 fragmented acres. The Friends of Hempstead Plains will share their legacy in the protection and current management of the remaining Plains including protection of Sandplain agalinis (Agalinis decemloba), controlling woody succession and invasive species encroachment as well as their new initiative, reclaiming the Plains within the Francis T. Purcell Preserve.*
- 12:00 p.m. **Lunch at Friends of Hempstead Plains Visitor Center** (Lunch provided)
- 12:30p.m. **Drive to the Greentree Foundation** (A 20 minute drive)
- 1:15 p.m. **Greentree Foundation Old Field and Pasture Restoration Tour** - Greentree Foundation, 220 Community Dr. Manhasset, NY 11030. *The tour of the Greentree Foundation grasslands is a unique, by permission only opportunity to observe the unique and rare diversity of historic pastureland and restored grasslands occurring on the glacial moraines of Long Island's north shore. Land managers will share the interesting site history and current facility use, success and challenges with mowing, prescribed fire and restoration seeding and highlight the pollinator garden.*
- 2:30 p.m. **Wrap Up and Safe Travels**

Additional Important Program Information:

Registration Required/Seating Limited: Please note that there is extreme public interest in this program and that **Seating is Very Limited**. Accordingly, RSVP is on a first come first served basis especially for the September 24th program and a waiting list is expected. We also are asking for your assistance in helping us overcome a difficult challenge that we have increasingly encountered with free and popular programming. Frequently 25% or greater of the registrants do not attend, leaving vacant seats and causes over ordering of refreshments and food. To ensure continued delivery of free educational programming, if you have registered for this free event and your plans change (in advance or at the last minute) preventing you from attending, please extend the courtesy of contacting Polly Weigand at PWeigand@pb.state.ny.us or (631)258-0316 immediately to ensure your seat and lunch are reassigned to another individual interested in this education opportunity.

A Word of Thanks!

A gracious thank you is extended to all who contributed their time, expertise and knowledge to help coordinate and conduct this timely and important educational program!!!



Hotel Reservations: Hyatt Place Long Island/East End 451 E. Main Street, Riverhead, NY 11901, USA

A block of rooms has been set aside at the Hyatt Place Riverhead NY at a group rate of \$136.00/night. This hotel was selected for its easy access to the Cross Sound Ferry; close proximity to restaurants for breakfast (Goldberg's Bagels, 130 East Main St. Riverhead is highly recommended) and dinner as well as to attractions immediately in the vicinity of the hotel such as coastal beaches and Long Island Aquarium; and balanced with a short 25 minute drive to Wertheim Wildlife Refuge Visitors Center.

Reservations can be made by calling the hotel directly at (631) 208-0002x0 or using this group booking link https://www.hyatt.com/en-US/hotel/new-york/hyatt-place-long-island-east-end/ispzr?corp_id=G-LOIS. To secure the group rate, please reference **LONG ISLAND/SANDPLAIN BLOCK**. Rooms must be booked by August 23, 2019 in order to secure the group rate and cancellations must be made within 24 hours prior to arrival to avoid being billed. If you are tax exempt entity, please bring the appropriate tax exempt paperwork with you. All parking is complementary for all overnight paying guests.

Directions to Meeting and Tours:

September 24, 2019 - 8:45 a.m. - 1:00 p.m.

USFWS Wertheim Wildlife Refuge Visitors Center
340 Smith Road, Shirley, NY 11967

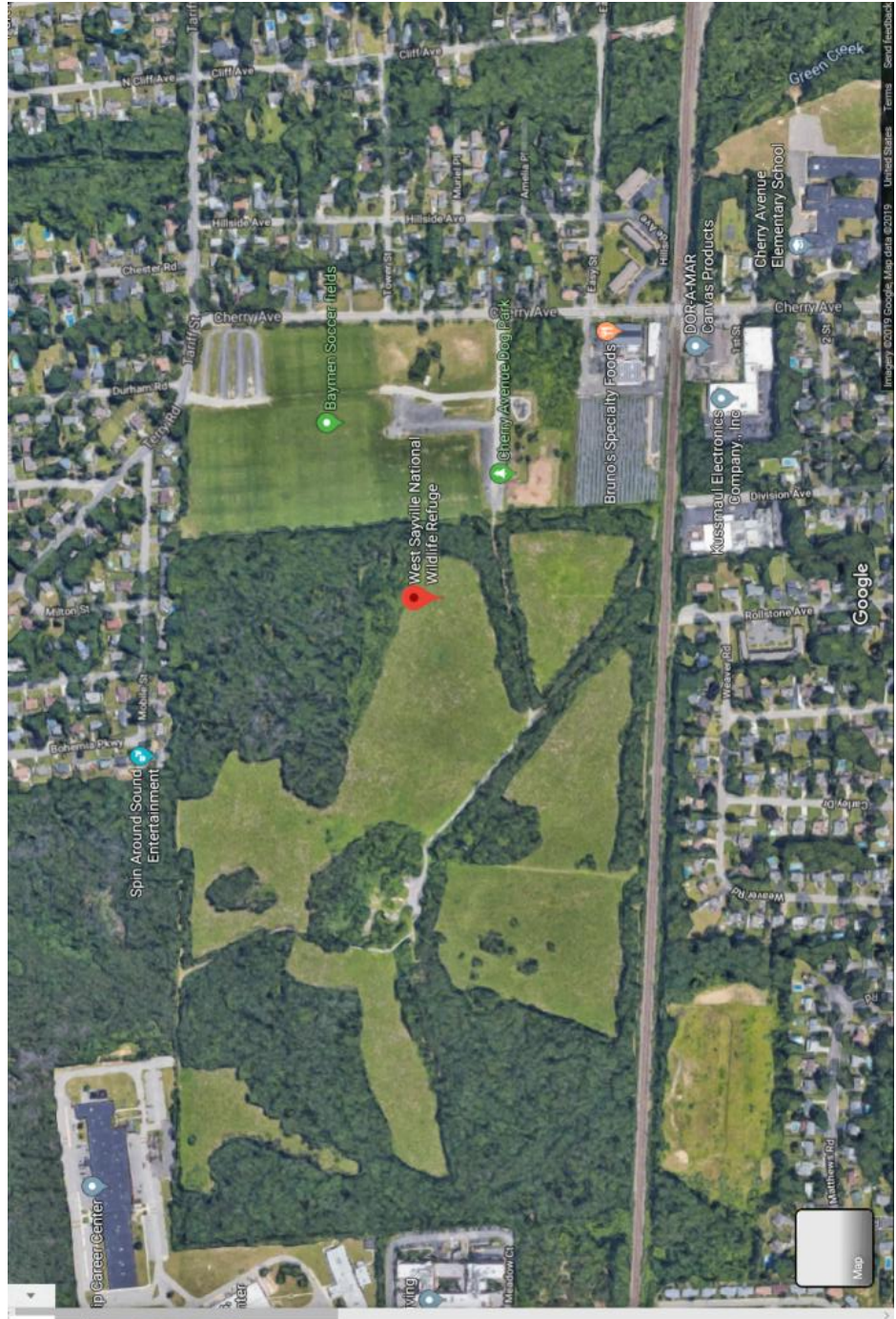
<https://goo.gl/maps/GFn7dtBrkMTWm9zP7>



September 24, 2019 -1:30 p.m. to 4:00 p.m.

Sayville Grassland
Cherry St. Sayville, NY

<https://goo.gl/maps/JHdBApResBokU5Gu6>



West Sayville National Wildlife Refuge

4.5 ★★★★★ (6)
Nature preserve

Directions Save Nearby Send to your phone Share

Red Rock Ln, Oakdale, NY 11769
PWV2+67 Sayville, Islip, NY
fws.gov
Claim this business
Add a label

Suggest an edit

Add missing information
Add phone number
Add hours

September 25, 2019 – 9:00 a.m. – 10:15 a.m.

**Long Island Native Plant Initiative
@Sisters of St. Joseph
1725 Brentwood Road
Brentwood, NY 11717**

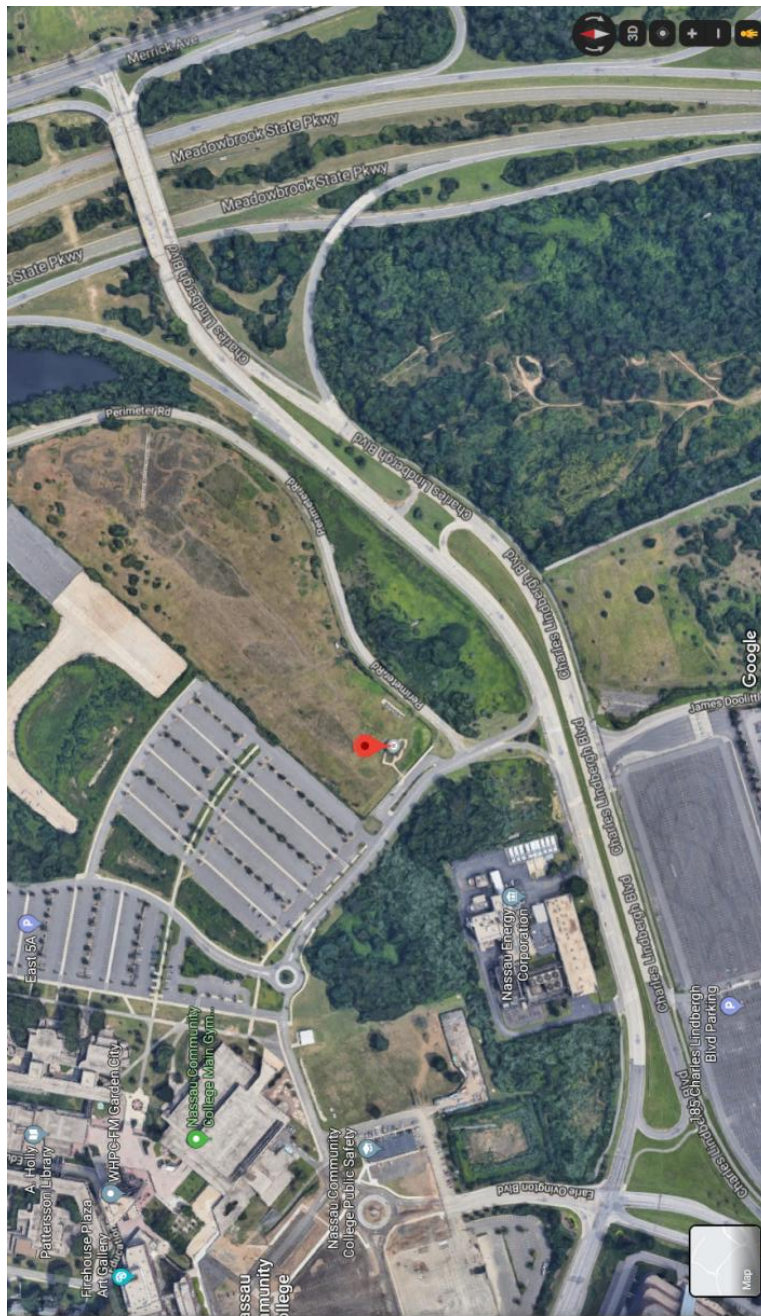
<https://goo.gl/maps/a25uxXqHKHERNBBp7>




September 25, 2019 - 10:45 a.m. - 12:30 p.m.

**Friends of Hempstead Plains Education Center
Charles Lindbergh BLVD and Perimeter Road, Garden City**

<https://www.google.com/maps/place/Hempstead+Plains+Education+Center/@40.7275553,-73.5874668,14z/data=!4m5!3m4!1s0x89c27d920b5e633d:0x430f758547dbc7e18m2!3d40.7275553!4d-73.5874668>





Hempstead Plains Education Center

5.0 ★★★★★ (3)
Nature preserve

Directions Save Nearby Send to your phone Share

You visited 9 months ago
Garden City, NY 11530
PCH7-22 East Garden City, Hempstead, NY
friendsrhp.org
(516) 572-7575
Claim this business
Add a label
Suggest an edit

Add missing information
Add hours

September 25, 2019 - 1:15 pm. - 2:30 p.m.

Greentree Foundation
220 Community Drive
Manhasset, NY 11030

<https://goo.gl/maps/6NPxkT6LabiwmwJh7>

