



I-90 Construction

NORTH BEND TO VANTAGE 2022 TO 2027

Meeting Future Traffic Demands and Improving Public Safety

I-90 is the main east-west transportation corridor across Washington State. It connects Puget Sound's ports, larger population centers, and retail and service businesses with the farmlands, industries, and extensive outdoor recreational areas of Eastern Washington.

Starting in spring 2022, I-90 – between North Bend and Vantage – will experience multiple construction projects that will affect the flow of traffic.

This work is necessary to maintain the movement of cars, trucks, freight, and recreational vehicles across the Cascade Mountains that is so important to our quality of life and the economic vitality of our state.

The construction projects are needed to:

- Meet projected traffic demands
- Improve public safety
- Reduce the risk of rocks and debris falling
- Fix structural deficiencies
- Repair stormwater drainage
- Connect habitat across I-90 for fish and wildlife

Project Spotlight: I-90 Vantage Bridge Deck Replacement Coming in 2023

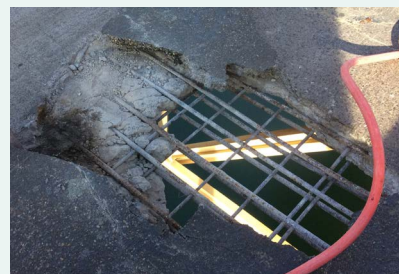
The Vantage Bridge was built in 1962 and is showing signs of wear and tear.

Replacement of the bridge deck will start in spring 2023 and last through fall 2025.

Drivers can expect one travel lane in each direction on most days. Crews will open two lanes in each direction on holidays and event weekends between Memorial Day and Labor Day.



Since 2019, WSDOT has discovered more than a dozen holes in the Vantage Bridge deck.



Expect Traffic Back-Ups and Delays Between North Bend and Vantage

More than two dozen projects of varying size will close shoulders, shift traffic lanes, and require detours. Heavy construction is expected each construction season (summer to fall) until 2027.



Detour route on I-90 Snoqualmie Pass from Hayak to the Easton vicinity.

Project Contacts

Brian White
Assistant Regional
Administrator for
Construction and
Development
WhiteB@wsdot.wa.gov

KaDeena Yerkan
Outreach Lead
YerkaKa@wsdot.wa.gov

Know Before You Go

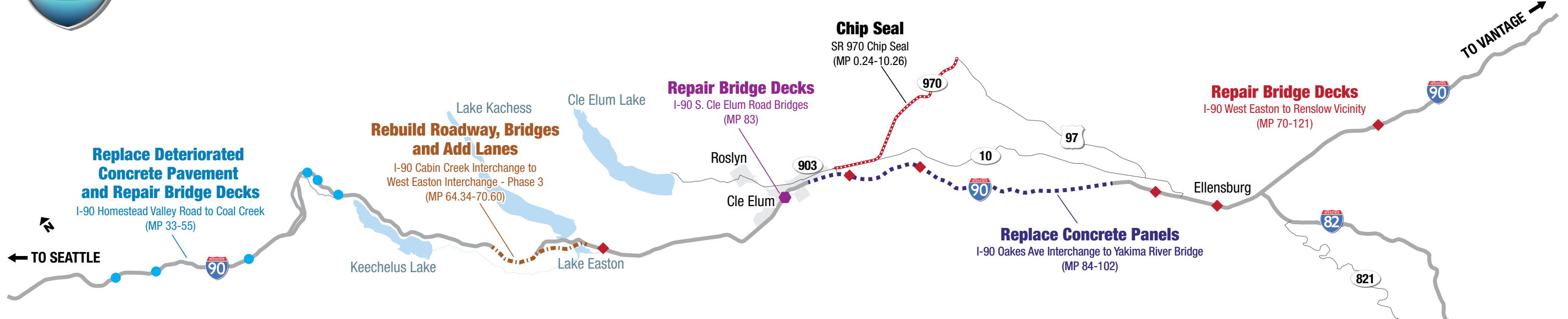
We encourage travelers to plan ahead, check traffic conditions along I-90 before hitting the road, and travel during non-peak periods as much as possible.

Stay Informed:

- [Project Webpages](#)
- [Weekly Travel Planner](#)
- [Twitter](#)
- [Facebook](#)
- [Project Email Updates](#)
- **Text Message Alerts:**
Type "WSDOT Snoqualmie" to 468311
- **Highway Advisory Radio:**
1610 AM or 530 AM
- **Call:** 5-1-1



I-90 NORTH BEND TO VANTAGE TRAVELING THROUGH I-90 SUMMER 2022 CONSTRUCTION



● Replace Deteriorated Concrete Pavement and Repair Bridge Decks

I-90 Homestead Valley Road to Coal Creek (MP 33 to 55)

Construction Summer 2022 to Fall 2022

What can travelers expect?

Daytime and nighttime lane closures during the week as crews repair five bridge decks between North Bend and Snoqualmie Pass.

--- Rebuild Roadway, Bridges and Add Lanes

I-90 Cabin Creek Interchange to West Easton Interchange - Phase 3
(MP 64.34 to 70.60)

Construction Summer 2022 to Fall 2028

What can travelers expect?

Intermittent single-lane weeknight closures followed by a traffic shift onto the new eastbound detour as crews widen I-90.

◆ Repair Bridge Decks

I-90 S. Cle Elum Road Bridges (MP 83)

Construction Summer 2022 to Fall 2023

What can travelers expect?

Single-lane closures at night as crews work to install a detour bridge.

◆ Repair Bridge Decks

I-90 West Easton to Renslow Vicinity (MP 70 to 121)

Construction Summer 2022 to Fall 2022

What can travelers expect?

Weekday single-lane closures as crews repair seven bridge decks from Easton to Kittitas.

--- Replace Concrete Panels

I-90 Oaks Ave Interchange to Yakima River Bridge

Construction Summer 2022 to Fall 2022

What can travelers expect?

Weekday single-lane closures and overnight closures for concrete curing as needed. Crews are repairing sections of concrete panels between Cle Elum and Ellensburg.

--- Chip Seal

SR 970 Chip Seal

Construction July to August 2022

What can travelers expect?

Weekday single-lane closures and piloted traffic as crews chip seal SR 970.

Roadside Safety Enhancements

Construction Summer 2022 to Fall 2022

What can travelers expect?

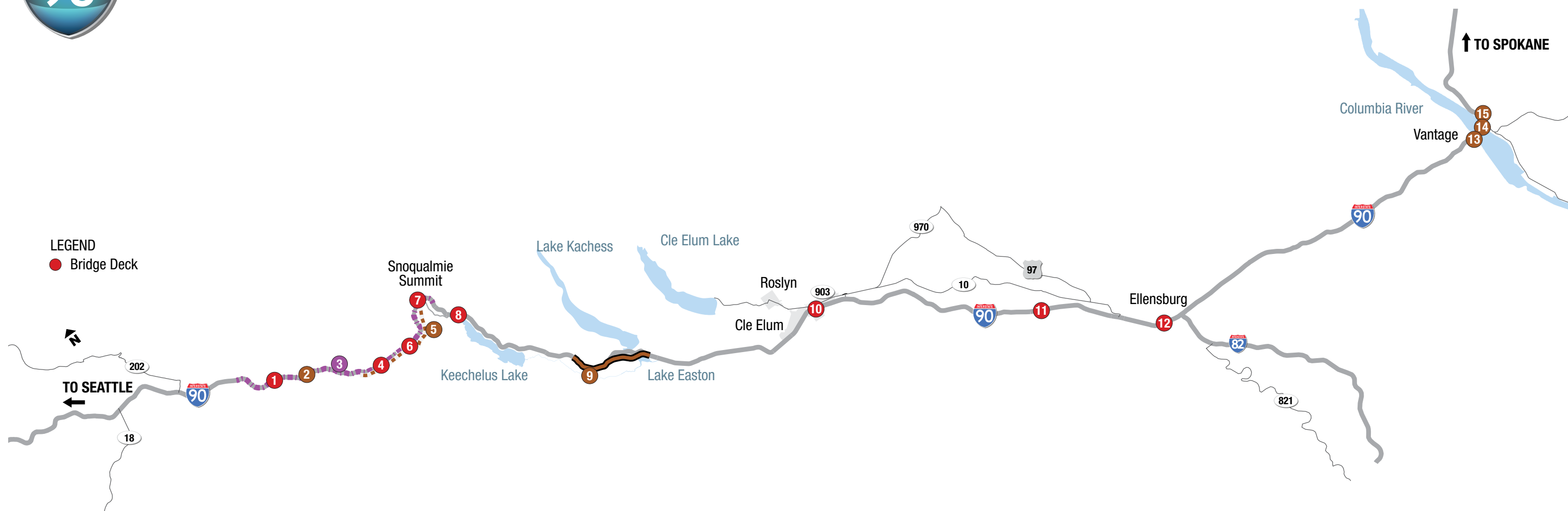
Crews are working in multiple locations from North Bend to Ellensburg to improve guardrail and other safety features along I-90. Most of the work will be done at night with minor impacts to traffic.



WSDOT and contractor crews build detour for next phase of the major improvement project on I-90 east of Snoqualmie Pass near Easton.



I-90 NORTH BEND TO VANTAGE 2023 CONSTRUCTION LACTATIONS



- 1 I-90 Homestead Valley Road Bridge, Eastbound - Deck Rehabilitation
- 2 I-90/2.77 Miles East of Tinkham Road, Westbound - Slope Stabilization
- 3 I-90 North Bend Vicinity to Snoqualmie Pass Vicinity - Drainage Repairs
- 4 I-90 Bandera Road Bridge, Eastbound - Deck Rehabilitation
- 5 I-90/1.8 Miles East of Tinkham Road to Denny Creek Viaduct - Stormwater Retrofit
- 6 I-90 South Fork Snoqualmie River Bridge, Eastbound - Deck Rehabilitation
- 7 I-90 Upper Snoqualmie River Bridge, Westbound - Deck Rehabilitation
- 8 I-90 Coal Creek Bridge, Westbound - Deck Rehabilitation
- 9 I-90 Cabin Creek Interchange to West Easton Interchange, Phase 3 - Add Lanes and Wildlife Bridges *

- 10 I-90 South Cle Elum Road Bridges - Deck Rehabilitation*
- 11 I-90 West Side Canal Bridge, Eastbound - Deck Rehabilitation
- 12 I-90 Wilson Creek Bridge, Westbound - Deck Rehabilitation
- 13 I-90 Columbia River Vantage Bridge - Special Repairs
- 14 I-90 Vantage Bridge - Replace Bridge Deck
- 15 I-90 East of Vantage Bridge - Drainage Improvement

Multi-year project *

What can travelers expect?

More information regarding the travel impacts of these projects will be provided in early spring 2023.