

Situation #1 - Students, Faculty or Support Staff Tests Positive

School Response

9/20/2021

Student/School Staff member tests positive for SARS-CoV-2 (COVID-19)

School must send home student/staff **or have** transported by parent/guardian (as applicable) for further medical evaluation by healthcare provider.

School should implement cleaning and disinfection of areas where case may have been present as per [CDC guidance](#).

School should notify families, teachers, and staff that a confirmed case was identified in the school/day care, as soon as possible, while maintaining confidentiality.

Include information on symptom monitoring, what to do if symptoms develop, COVID-19 prevention strategies, and information on what the school/day care is doing in response to the positive case.

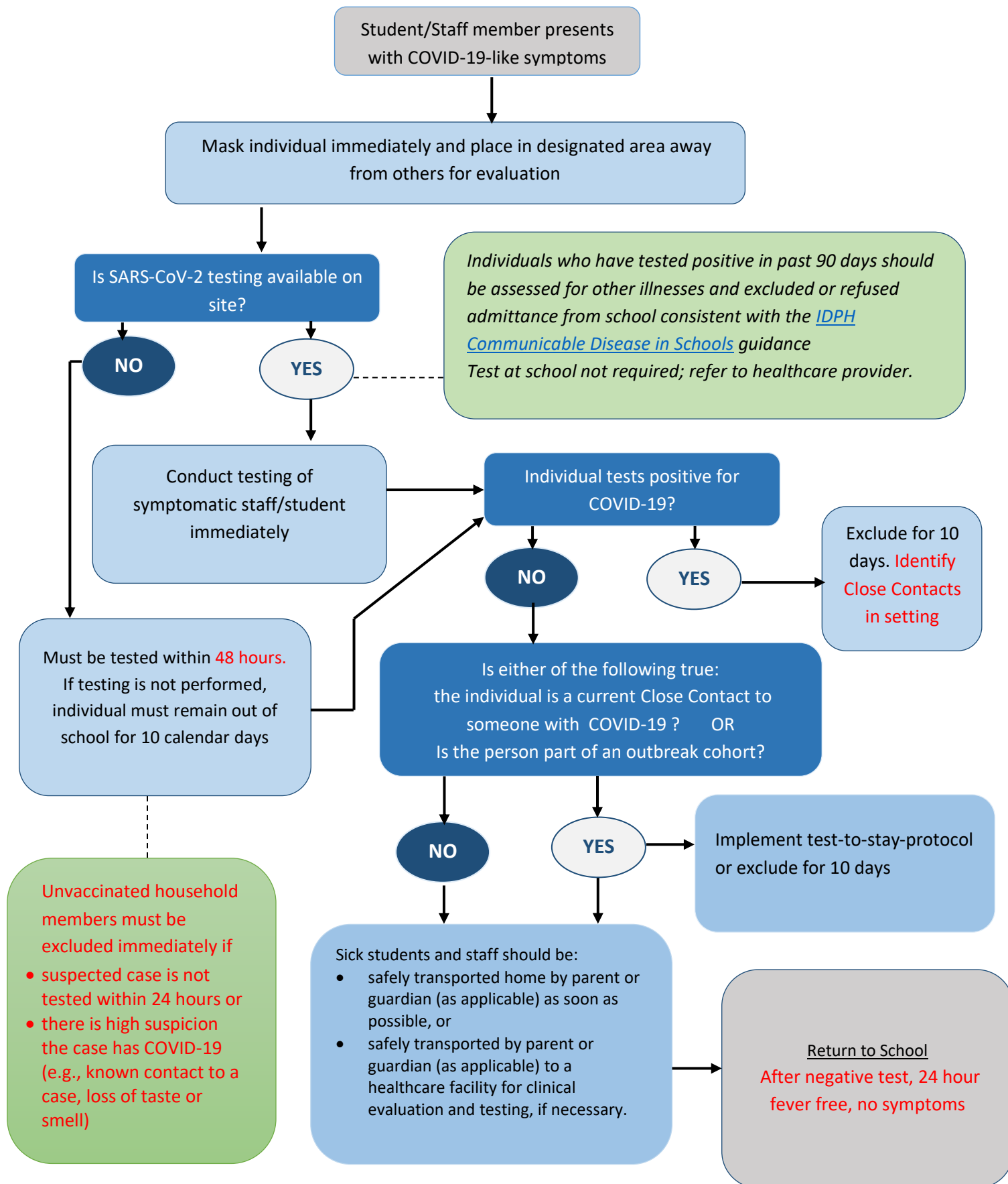
School should identify and exclude individuals identified as close contacts by school or LHD (see Situation #2)

Exclude case for 10 days.
(May return on calendar day 11 after symptom onset or positive test collection date (if asymptomatic) and if fever free for 24 hours and symptoms improved.)

Situation #2 - Students, Teachers, and Support Staff Exhibiting COVID-19-like Symptoms at School

School Response

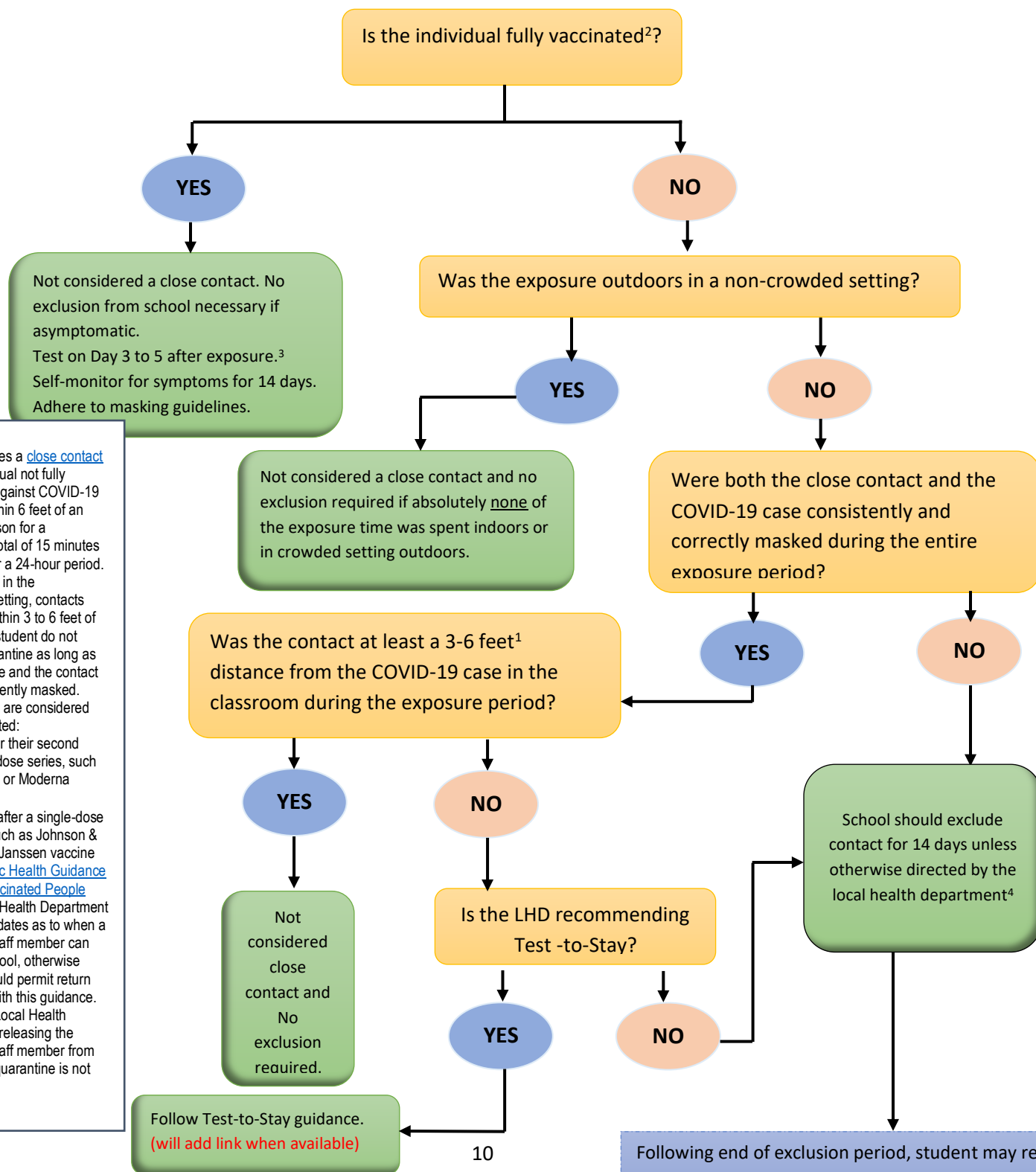
9/20/2021



Situation 3: Students or School Personnel who are Close Contacts to a Confirmed COVID-19 Case

9/20/2021

Schools should exclude or refuse to admit students and staff after close contact with a confirmed case consistent with the guidelines below, unless otherwise directed by their local health department. An isolation or quarantine order is not required for schools to exclude or refuse to admit students or staff.



References:

1 CDC defines a [close contact](#) as an individual not fully vaccinated against COVID-19 who was within 6 feet of an infected person for a cumulative total of 15 minutes or more over a 24-hour period. For students in the classroom setting, contacts who were within 3 to 6 feet of an infected student do not require quarantine as long as both the case and the contact were consistently masked.

2 Individuals are considered fully vaccinated:

- 2 weeks after their second dose in a 2-dose series, such as the Pfizer or Moderna vaccines, or

- 2 weeks after a single-dose vaccine, such as Johnson & Johnson's Janssen vaccine

3 [CDC Public Health Guidance for Fully Vaccinated People](#)

4 The Local Health Department may supply dates as to when a student or staff member can return to school, otherwise schools should permit return consistent with this guidance. Letter from Local Health Department releasing the student or staff member from isolation or quarantine is not required.

Following end of exclusion period, student may return to school. School should require social distancing in school (as much as possible) and consistent masking indoors and outdoors with no extracurricular competition for the full 14 days.