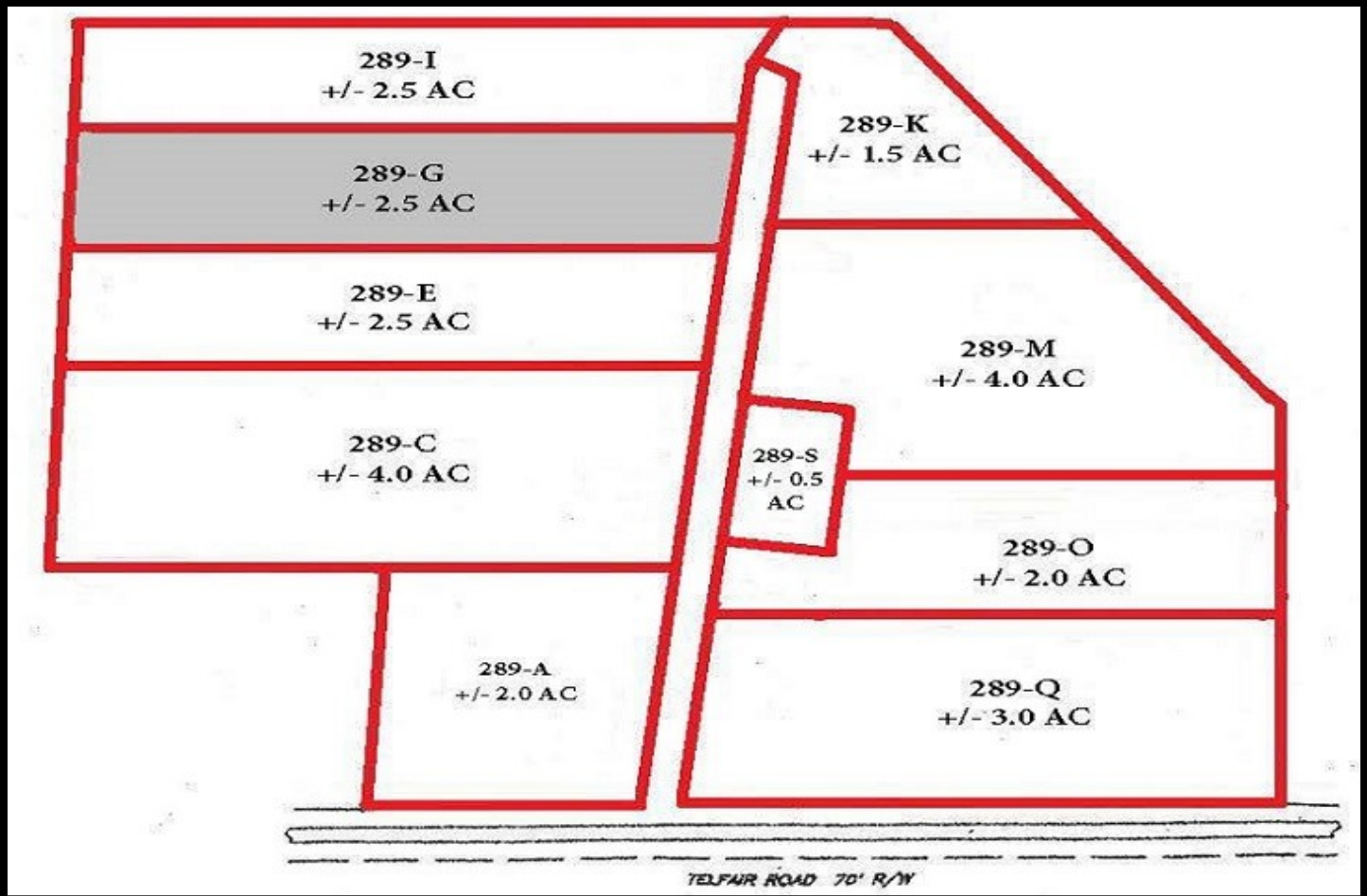




289 Telfair Road
Savannah, Georgia 31415



Property Specifics

Property Type:	Industrial
Rentable Area:	Approximately 2.50 Acres
Amenities:	Fenced; Landing Gear Pads
Proximity:	To GPA: 6 Miles; To I-95: 7.1 Miles, To I-16: 2 Miles; To Hwy 80: 1.9 Miles

DeMott Development, LLC
2700 Louisville Road
Savannah, GA 31415
(912) 447-1000 Office