

Texas Rural Acute Care Hospital Closures

(1965–2019)

Prepared by the Texas Organization of Rural & Community Hospitals (detail on closures prior to 1985 is incomplete)
 UPDATED JANUARY, 2020.

About TORCH

Texas Organization of Rural & Community Hospitals (TORCH) is the voice and principal advocate for rural and community hospitals in Texas. We provide leadership in addressing the special needs and issues of these hospitals. For more information, call (512) 873-0045 or visit the website at torchnet.org.

At TORCH we strive to demonstrate our value and commitment through valuable programs, services, education, advocacy, publications, professional development and representation.



TORCH

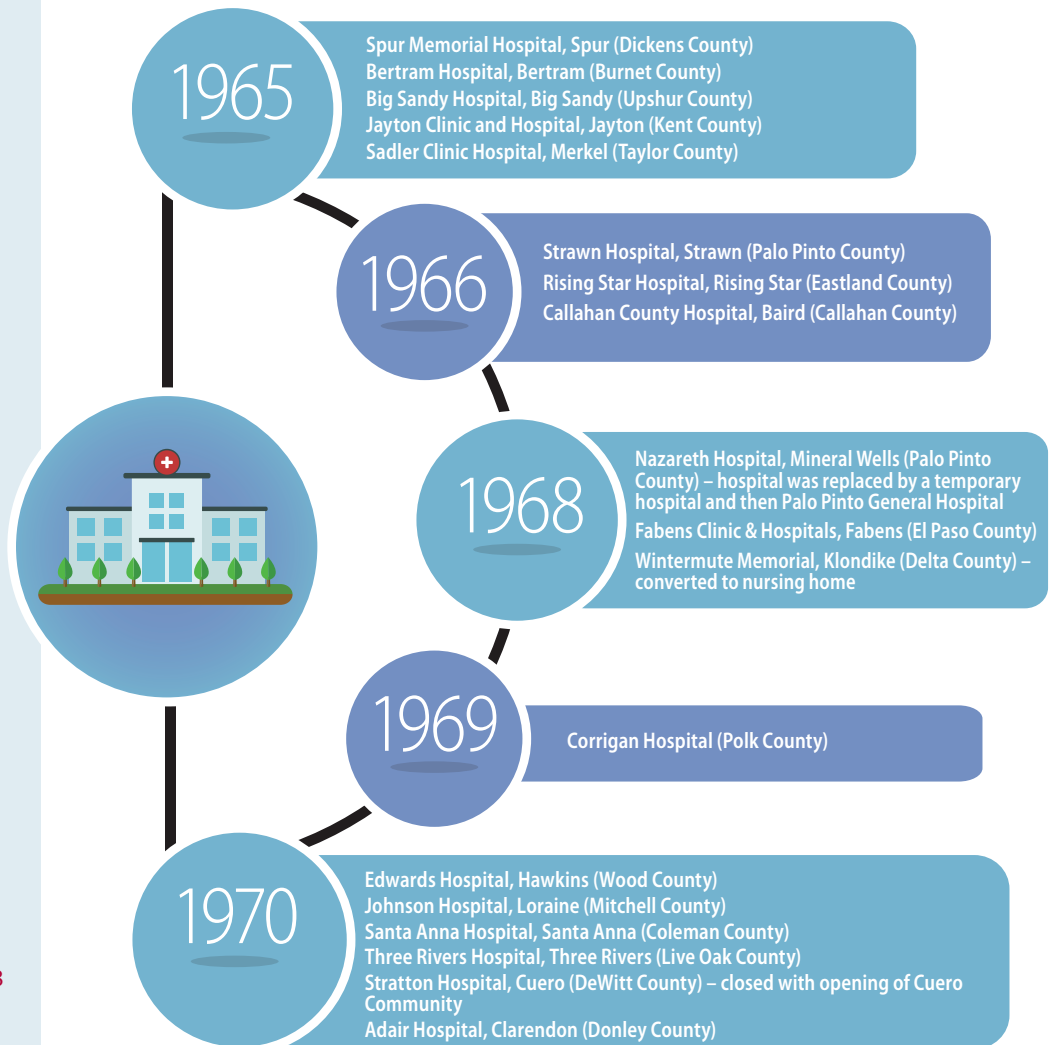
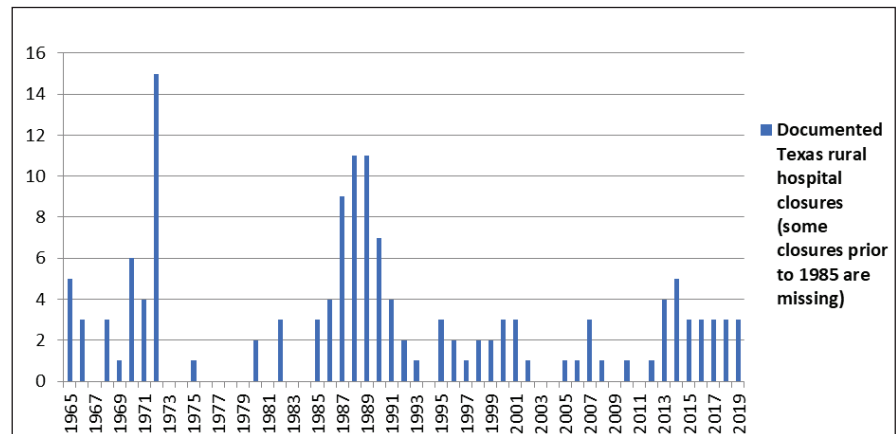
P.O. Box 203878, Austin, TX 78720-3878

(512) 873-0045

www.torchnet.org

Texas Rural Acute Care Hospital Closures – (1965-2019)

Additional closures are believed to have occurred from 1965 to 1985 that are not yet documented.



continued

1971

Blackwell Hospital, Gorman (Eastland County)
Keidel Clinic and Hospital, Fredericksburg (Gillespie County) – merged into Hill Country Hospital, Fredericksburg
Risser Hospital, Bonham (Fannin County)
Burns Hospital, Cuero (DeWitt County) – closed with opening of Cuero Community

1972

Janes Hospital, Cooper (Delta County)
Community Hospital, Olton (Lamb County)
Pineland Hospital, Pineland (Sabine County)
Wilkerson Hospital, Roby (Fisher County)
Zapata Medical Center, Zapata (Zapata County)
Alvarado Clinic and Hospital, Johnson City (Blanco County)
Schuhmann Hospital, East Bernard (Wharton County)
Newgulf Hospital, Newgulf (Wharton County)
Stover Clinic, Marfa (Presidio County) – appears to have converted to clinic only
Stanley Hospital, Matador (Motley County)
Bilsing Clinic Hospital, Normangee (Madison County)
Wolfe City Hospital, Wolfe City (Hunt County)
Stevenson Clinic Hospital, Vidor (Orange County)
Park Clinic and Hospital, Iowa Park (Wichita County)
Allen Memorial Hospital, Bonham (Fannin County) – closed in conjunction with opening of a new hospital, Northwest Medical Center which would eventually become TMC Bonham

1975
1980

Pleasanton Hospital, Pleasanton (Atascosa County) – the hospital will reopen months later
McLean Hospital, McLean (Gray County)
Groom Hospital, Groom (Carson County)

1982
1985

Roma Hospital, Roma (Starr County)
Baker Hospital, Wills Point (Van Zandt County)
Fleming Hospital, Elgin (Bastrop County)
Mercy Hospital, Slaton (Lubbock County)
Richards Hospital, Paducah (Cottle County)
Mason Hospital, Mason (Mason County)

1986

Knox County Hospital, Knox City (Knox County) – the hospital will reopen in a year
Yorktown Memorial Hospital, Yorktown (DeWitt County)
Coke County Hospital, Robert Lee (Coke County)
Edwards County Memorial, Rocksprings (Edwards County)

1987

Hico Hospital, Hico (Hamilton County) – the hospital will later reopen
Selby General, Center (Shelby County) – the hospital will later reopen
Foard County Hospital, Crowell (Foard County)
Hamilton General, Hamilton (Hamilton County) – the hospital will reopen a year later
Hospital in the Pines, Lone Star (Morris County)
Meridian Hospital, Meridian (Bosque County)
Rosebud Community Hospital, Rosebud (Falls County)
Brazos Valley Hospital, Sealy (Austin County)
Wortham Hospital, Wortham (Freestone County)

1988

Golden Plains, Hospital, Borger (Hutchinson County) – the hospital will later reopen in late 1989
Milam Regional, Cameron (Milam County)
Robertson Medical Center, Hearne (Robertson County)
Bastrop Hospital, Bastrop (Bastrop County)
Shiner Hospital, Shiner (Lavaca County)
Marion County Hospital, Jefferson (Marion County)
Teague General Hospital, Teague (Freestone County)
Kirbyville General, Kirbyville (Jasper County)
Comfort Community Hospital, Comfort (Kendall County)
Taft Hospital, Taft (San Patricio County)
Yorktown Memorial, Yorktown (DeWitt County)

1990

Hico Community Hospital, Hico (Hamilton County)
Graham Memorial Hospital, Cisco (Eastland County)
Ranger General Hospital, Ranger (Eastland County)
Burlson Hospital, Caldwell (Burlson County)
Harris Methodist, Dublin (Erath County)
Granberry Memorial, Naples (Morris County)
Hubbard Hospital, Hubbard (Hill County)

1991

Rollins Brook, Lampasas (Lampasas County) - will reopen with new owner
Caprock Hospital, Floydada (Floyd County)
Childress General Hospital, Goldthwaite (Mills County)
Winter Garden Medical Center, Dilley (Frio County)

1989

Sterling City Hospital, Sterling City (Sterling County)
Mauritz Hospital, Ganado (Jackson County)
South Plains Hospital Clinic, Amherst (Lamb County)
Hall-Bennett Memorial, Big Spring (Howard County)
Archer County Hospital, Archer City (Archer County)
San Saba Hospital, San Saba (San Saba County)
Menard Hospital, Menard (Menard County)
Newton County Memorial, Newton (Newton County)
Leon Memorial, Buffalo (Leon County)
St. Edward Hospital, Cameron (Milam County) – will reopen as Central Hospital
St. Jude Hospital, Brenham (Washington County) – closed and merged into Bohne Memorial to become Trinity Community which eventually becomes Baylor Scott & White

1992
1993

Medical Center, Gladewater (Gregg County)
Bridgeport Hospital, Bridgeport (Wise County) – another hospital will open in 2008 but will close in 2015
Lee Memorial, 32 beds, Giddings (Lee County)

1995
1996

Goliad County Hospital, 24 beds, Goliad (Goliad County)
Gilmer Medical Center, 46 beds, Gilmer (Upshur County)
Brooks County Hospital, 31 beds, Falfurrias (Brooks County)

Crockett County Hospital, 20 beds, Ozona (Crockett County)
Garza Memorial Hospital, 26 beds, Post (Garza County)

Shackelford County Hospital, 24 beds, Albany (Shackelford County)

1997–
1999

Palo Duro Hospital, 49 beds, Canyon (Randall County)
Lakes Regional Medical Center, Jasper (Jasper County) – the hospital will be purchased and reopened in 2000

Silsbee Doctors Hospital, 69 beds, Silsbee (Hardin County)
East Texas Medical Center, Rusk (Cherokee County)

2000–
2002

Medical Center of Winnie, 49 beds, Winnie (Chambers County)
Baylor Medical Center, Ennis (Ellis County)
Brooks Hospital, Atlanta (Cass County)

Hillcrest Medical, 49 beds, West (McLennan County)
East Texas Medical Center, Gilmer (Upshur County) – this facility will later reopen
Hi-Plains Hospital, 41 beds, Hale Center (Hale County)

Hall County Hospital, Memphis (Hall County)

2005–
2007

DeLeon Hospital, DeLeon (Comanche County)

Living Hope New Boston Medical Center, 63 beds, New Boston (Bowie County)

Barix Clinics of Texas, Wylie (Collin County)
Renaissance Hospital Terrell North Campus, Terrell (Kaufman County)
Dolly Vinsant Memorial, San Benito (Cameron County)

2008
2010

Dickerson Memorial Hospital, Jasper (Jasper County)

Bastrop Hospital, Bastrop (Bastrop County) - later replaced with freestanding ER which remains open

2012
2013

Weimer Hospital, Weimer (Colorado County) - will later reopen in Aug 2015

Renaissance Hospital, Terrell (Kaufman County)
Shelby Regional, Center (Shelby County) - later replaced with freestanding ER
Cozby-Germany, Grand Saline (Van Zandt County) - reopened 4-15 as Texas General
Central Texas Hospital, Cameron (Milam County) - reopened 11-14 as Little River Healthcare

2014

Lake Whitney Medical, Whitney (Hill County)
Good Shepard, Linden (Cass County)
ETMC, Gilmer (Upshur County)
ETMC, Mount Vernon (Franklin County)
ETMC, Clarksville (Red River County) - anticipated reopening in 2019 after construction of new facility

2015

North Texas Regional, Bridgeport (Wise County) – acquired by nearby Wise Health in 2013, closed inpatient services Jan. 2015, but continues with an urgent care center – not a full ER
Hunt Regional, Commerce (Hunt County) – inpatient hospital closed services but continues as a freestanding ER and outpatient facility
Bowie Memorial Hospital, 44 beds, Bowie (Montague County) – Reopened as Central Hospital of Bowie, April 2017

2016

Gulf Coast Regional Medical Center, Wharton, 159 beds (Wharton County) – ER initially remained open but closed in Nov 16. Reopen May 2018 as Oak Bend Wharton
Nix Community, 18 beds, Dilley (Frio County)
Weimar Medical Center, 38 beds Weimar (Colorado County) – ER and outpatient reopened on 12-19-16 and inpatient resumed as of 2-1-17; will close again in 2017

2017

Timberlands Hospital, 49 beds, Crockett (Houston County) – reopened as Crockett Medical Center, 25 beds, September 2018
ETMC Trinity, Trinity (Trinity County)
Weimar Hospital, Weimar (Colorado County) – prior closures of this hospital in Aug. 2012 and Nov. 2016

2018

Stamford Memorial, 25 beds, Stamford (Jones County) – some outpatient services remain in place but no inpatient or ER
Little River, 25 beds, Rockdale (Milam County)
Little River, 10 beds, Cameron (Milam County)

2019

Chillicothe Hospital, 21 beds Chillicothe (Hardeman County) – an outpatient clinic continues
Hamlin Memorial Hospital, 25 beds, Hamlin (Jones County) – an outpatient clinic continues
Texas General Hospital, 52 beds, Grand Saline (Van Zandt County) – an outpatient clinic continues (note – this hospital closed in 2013 and reopened with new owners in 2015)

SPECIAL CLOSURE NOTES

Care Regional Medical Center, Aransas Pass (Nueces County) closed late 2017 until early 2018 due to hurricane damage and has been noted as a “rural” closure on some national lists. However, Care Regional is in a partly rural section of a metropolitan county – Nueces – and does not have a Medicare or Medicaid rural designation so that closure is not included on this list as it is not considered to be a rural hospital.

Cleveland Regional, Cleveland (Liberty County) closed Aug 2014 and reopened 7-17 as ER with 2 inpatient beds. It is shown on some national lists as a “rural closure” but is not considered a rural hospital because it is in an MSA and it does not have a rural designation from Medicare or Medicaid.

CLOSED RURAL HOSPITALS WITH CLOSURE DATE UNKNOWN (but presumed prior to 1990, not included above)

Hardin Memorial Hospital, Kountze (Hardin County)

Hebbronville (Jim Hogg County)

Mixon Hospital, Kirbyville (Jasper County) – probably 85 or 86

Castroville Hospital, Castroville (Medina County)

Starlite Hospital, Center Point (Kerr County)

Foard County Hospital, Crowell (Foard County)

Community Hospital, Raymondville (Willacy County)

Crystal Hospital, Crystal City (Zavala County)

Hempstead Hospital, Hempstead (Waller County)

Pleasanton Hospital, Pleasanton (Atascosa County) – the hospital closed and then reopened in 1975, and then closed again but no date found for final closure.

Boerne

Bronte

Buda

Camden

Cotulla

Phillips Hospital, Phillips (Hutchinson County)

Poteet Hospital, Poteet (Atascosa County)

Texon Hospital, Texon (Reagan County)

CLOSURES IDENTIFIED PRIOR TO 1965

1961 - Blanco

*Footnotes:

A hospital closure can be a full closure of the facility or a hospital ceasing inpatient services. Some hospitals in recent years have closed inpatient services but continue to operate as a so called “free standing” emergency or urgent care center and may also offer outpatient services, but they are no longer considered a hospital.

The closed hospitals on this list were considered to be in a rural area at the time of closure, however, some of those communities have since been classified by the federal government as urban. Also, some of the decline in the number of “rural” hospitals (from more than 300 in 1960 to 158 in 2020 is attributable to the community being reclassified as urban during the period of time.

This list may not reconcile with some national lists of rural closures as hospitals that may be considered rural on some lists are not technically rural (lacking a Medicare or Teas Medicaid “rural” designation). Those hospitals that closed are not included on this closure list.

There is no known single official listing of Texas rural hospital closures. This list was reconstructed by the Texas Organization of Rural & Community Hospitals years after many of the closures from a number of sources and records with the Texas Department of State Health Services, the State Office of Rural Health, the Texas State Archives, County Historical Commissions, TORCH records, newspaper and media accounts, and persons with knowledge of Texas rural hospital closures.

Records found in the State Office of Rural Health state that there were 166 closures between 1980 and 1985 however, those records do not identify the hospitals. Some of those closures included in the 166 number may be urban hospitals. Dr. Red Duke is quoted in a 1992 Texas Monthly article that 126 Texas rural hospitals closed between 1982 and 1992, however the accuracy of that statement cannot be confirmed.

The Texas Health and Human Services Commission (Department of State Health Services prior to 2018) licenses hospitals, however, some hospital closures in the past have apparently not been reported to HHSC/DSHS. Records on some of the older closures are not locatable. DSHS records only show the cancellation of a license. A cancellation of a license does not necessarily mean a closure as a license may have been reissued because of owner change and there was no closing.

Some of these closures are of the same hospital on more than one occasion where a hospital closed, reopened, and then closed again.

Some closures may have occurred in one year but are listed in a different year because of inability to document an exact date of closure.

Some older hospitals on this list were considered hospitals at the time, but under today's licensing standards, they would only be considered a clinic and not a hospital.

This list is regularly updated as hospital status changes and historic information on closures is located.