

Self-Measurement of Blood Pressure at Home Reduces the Need for Antihypertensive Drugs

A Randomized, Controlled Trial

Willem J. Verberk, Abraham A. Kroon, Jacques W.M. Lenders, Alfons G.H. Kessels, Gert A. van Montfrans, Andries J. Smit, Paul-Hugo M. van der Kuy, Patricia J. Nelemans, Roger J.M.W. Rennenberg, Diederick E. Grobbee, Frank W. Beltman, Manuela A. Joore, Daniëlle E.M. Brunenberg, Carmen Dirksen, Theo Thien, Peter W. de Leeuw; for the Home Versus Office Measurement, Reduction of Unnecessary Treatment Study Investigators

Abstract—It is still uncertain whether one can safely base treatment decisions on self-measurement of blood pressure. In the present study, we investigated whether antihypertensive treatment based on self-measurement of blood pressure leads to the use of less medication without the loss of blood pressure control. We randomly assigned 430 hypertensive patients to receive treatment either on the basis of self-measured pressures (n=216) or office pressures (OPs; n=214). During 1-year follow-up, blood pressure was measured by office measurement (10 visits), ambulatory monitoring (start and end), and self-measurement (8 times, self-pressure group only). In addition, drug use, associated costs, and degree of target organ damage (echocardiography and microalbuminuria) were assessed. The self-pressure group used less medication than the OP group (1.47 versus 2.48 drug steps; $P<0.001$) with lower costs (\$3222 versus \$4420 per 100 patients per month; $P<0.001$) but without significant differences in systolic and diastolic OP values (1.6/1.0 mm Hg; $P=0.25/0.20$), in changes in left ventricular mass index (-6.5 g/m² versus -5.6 g/m²; $P=0.72$), or in median urinary microalbumin concentration (-1.7 versus -1.5 mg per 24 hours; $P=0.87$). Nevertheless, 24-hour ambulatory blood pressure values at the end of the trial were higher in the self-pressure than in the OP group: 125.9 versus 123.8 mm Hg ($P<0.05$) for systolic and 77.2 versus 76.1 mm Hg ($P<0.05$) for diastolic blood pressure. These data show that self-measurement leads to less medication use than office blood pressure measurement without leading to significant differences in OP values or target organ damage. Ambulatory values, however, remain slightly elevated for the self-pressure group. (*Hypertension*. 2007;50:1019-1025.)

Key Words: blood pressure ■ hypertension ■ self-measurements ■ home monitoring
■ ambulatory blood pressure measurement ■ treatment

As indications for lowering blood pressure (BP) become increasingly stringent, the associated medication use and costs rise markedly.¹ This calls for proper diagnosis and careful selection of patients in whom treatment is really indicated. In this respect, conventional office BP measurements (OBPMs) have disadvantages, because they can easily elicit a white-coat effect, overestimation of a patient's BP,² and unnecessary drug prescription. Self-BP measurements (SBPMs) are less liable to the white-coat effect³ and may provide a more reliable estimate of a patient's "true" BP. In addition, SBPM correlates better with the development of target organ damage (TOD) than OBPM⁴⁻⁶ and

for the occurrence of cardiovascular complications.^{7,8} Therefore, SBPM has the potential to identify subjects that may not need treatment. This could reduce drug use and lead to considerable costs savings. The Home versus Office Measurement, Reduction of Unnecessary treatment Study (HOMERUS) was designed to determine whether treatment based on SBPM leads to a decreased drug prescription without an impaired BP control and TOD as compared with treatment based on OBPM.

Methods

The design of the HOMERUS has been described in detail elsewhere.⁹ Briefly, HOMERUS is a multicenter, prospective, random-

Continuing medical education (CME) credit is available for this article. Go to <http://cme.ahajournals.org> to take the quiz.

Received May 16, 2007; first decision June 4, 2007; revision accepted September 20, 2007.

From the Cardiovascular Research Institute Maastricht, Maastricht University, and the Departments of Internal Medicine (W.J.V., A.A.K., R.J.M.W.R., P.W.d.L.), Medical Technology Assessment and Epidemiology (A.G.H.K., M.A.J., D.E.M.B., C.D.), Clinical Epidemiology (P.J.N.), and Clinical Pharmacy (P.-H.M.v.d.K.), University Hospital Maastricht, Maastricht, The Netherlands; Department of General Internal Medicine (J.W.M.L., T.T.), Medical Center, Radboud University Nijmegen, Nijmegen, The Netherlands; Department of Internal Medicine (G.A.v.M.), Academic Medical Center, Amsterdam, The Netherlands; Departments of Internal Medicine (A.J.S.) and General Practice (F.W.B.), University Medical Center Groningen, Groningen, The Netherlands; and the Julius Center for Health Sciences and Primary Health Care (D.E.G.), University Medical Center Utrecht, Utrecht, The Netherlands.

This trial is registered as ISRCTN56551999 at <http://www.controlled-trials.com/ISRCTN56551999/>

Correspondence to Willem J. Verberk, Department of Internal Medicine, University Hospital Maastricht, PO Box 5800, 6202 AZ Maastricht, The Netherlands. E-mail willem.verberk@intmed.unimaas.nl

© 2007 American Heart Association, Inc.

Hypertension is available at <http://hyper.ahajournals.org>

DOI: 10.1161/HYPERTENSIONAHA.107.094193

ized, double-blind trial with a parallel-group design. Patients, aged ≥ 18 years whose office BP was >139 mm Hg systolic and/or 89 mm Hg diastolic were randomly allocated to either the self-pressure (SP) group or to the office pressure (OP) group using a procedure of minimization.^{10,11} If randomly assigned to the SP group, the patient was instructed to start self-measurements of BP at home. In this group, stepwise antihypertensive treatment was guided by the results of SBPM. In the OP group, stepwise treatment was based on office readings. The prescribing physician was kept blinded from random assignment and, therefore, remained unaware of whether the patient was treated according to OBPM or SBPM values. To maintain blinding during follow-up, medication was prescribed and, if necessary, adapted by a physician at the coordinating center who based his treatment decisions on the average OBPM or SBPM values. Patients picked up their treatment from their own pharmacist, who had been extensively informed about the trial and the importance of handing out the precise number of pills that were prescribed. Patients were asked not to tell their physician to which group they belonged. In accordance with recommendations at the time that this study started, the target BP was set at 140-mm Hg systolic and 90-mm Hg diastolic and the lower limit at 120-mm Hg systolic and 80-mm Hg diastolic for both groups. At entry into the study, any existing antihypertensive therapy was discontinued whenever possible, and patients entered a placebo run-in period of 4 weeks' duration before study treatment was initiated. If the treating physician considered interruption of treatment to be too hazardous, the patient was switched immediately to trial medication. Twenty-four-hour ambulatory BP monitoring (ABPM), as a reference standard, and assessment of TOD (heart and kidney) took place at the end of the run-in period and at the end of the trial. Final results of the trial were analyzed in 2 domains: medication use and treatment costs and degree of BP control and TOD. The study was approved by an institutional review committee. Informed consent in accordance with the Declaration of Helsinki was obtained from all of the patients before entering the study, and the procedures followed were in accordance with institutional guidelines.

BP Measurements

At each visit, 3 consecutive OBPMs were performed in the hospital or at the general practitioner's clinic. Patients of the SP group started SBPM 3 weeks after study entry. SBPM was performed 6 times a day (3 in the morning and 3 in the evening) for a 7-day period before every visit. Both OBPM and SBPM were always performed in the nondominant arm in sitting position after ≥ 5 minutes of rest using the same fully automated device (Omron HEM-705 CP).¹² In addition, ABPM was performed with a Spacelabs automatic device at the start and end of the trial. Measurements were taken every 15 minutes between 7 AM and 11 PM and every 30 minutes at night. The average daytime ABPM value was calculated from 9 AM and 9 PM hour on the first day without the initial hour. Average nocturnal ABPM was determined from 1 AM and 6 AM.

Additional Measurements

Treatment Costs

Treatment costs consisted of medication costs (ie, drug costs and pharmacist fee) and costs of the BP monitor. Medication costs were computed for each drug on each visit. Medication prices from May 2005 were taken for analysis. In the SP group, the costs of the BP monitor were calculated using the annuity method with a depreciation period of 3 years, an interest rate of 4.5%, and maintenance costs of 8% of the purchase price. Total treatment costs are reported in US\$ (1 US\$ is 0.76€ at the January 2004 conversion rate).

Adherence to Treatment

At each visit, patients had to take their medication bottles to the clinic where the physician or nurse counted the number of pills left in the bottle in the presence of the patient. Feedback was given only when the number of pills left was extremely high. The scores were transmitted to the coordinating center, where the number of prescribed pills was registered so that intake could be calculated.

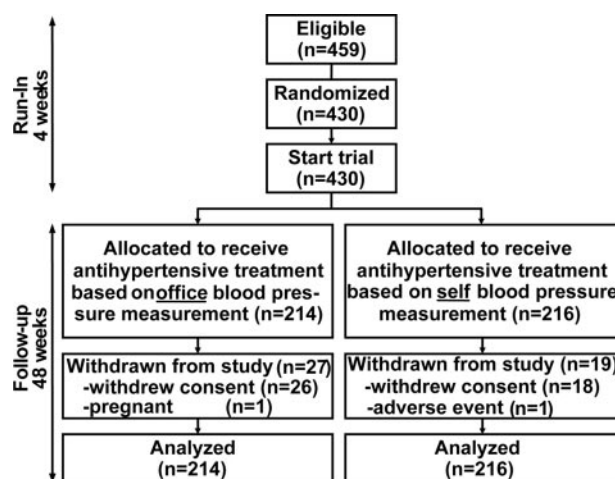


Figure 1. Flowchart of the trial.

Adverse Effects of Medication

In a subscale of the Bulpitt questionnaire,¹³ symptoms of hypertension and adverse effects of medication were addressed. This was performed in 356 patients (179 from the SP group and 177 from the OP group) who were included before May 1, 2003.

Statistical Considerations

Data were analyzed according to the intention-to-treat principle. The last observation carried forward method was applied for missing values when data of ≥ 2 consecutive visits were available. Differences in BP between the 2 randomized groups were analyzed by a multivariate analysis adjusting for baseline BP values, center, age, gender, body mass index, smoking, antihypertensive drugs at baseline, run-in period, and setting of patient recruitment. Other between-group comparisons involved the following statistical methods: Student's *t* test, Mann-Whitney (when data were not normally distributed), or χ^2 for proportions. A 2-sided $P < 0.05$ was taken as statistical significance. All of the statistical calculations were performed using SPSS version 12.0 (SPSS, Inc).

Results

Altogether, 459 patients met the inclusion criteria and were considered eligible for the study. Of these, 29 did not start trial therapy because they withdrew or refused consent for various reasons. Consequently, 430 patients entered the study after a 4-week run-in period and started trial medication (Figure 1). Baseline characteristics at inclusion were comparable for the 2 groups (Table 1).

During the trial, 46 patients dropped out (OP group: 27; SP group: 19) because they withdrew consent ($n=44$), had an adverse event ($n=1$), or became pregnant ($n=1$). Reasons for withdrawing consent were that patients felt uncomfortable with the blinded medication, complained about adverse effects, found the frequent visits to the hospital too cumbersome, or thought that the additional examinations might be too hazardous. Patients who dropped out from the study did not differ in any characteristic from patients who completed follow-up either between or within groups.

Median follow-up time was 351 days (interquartile range: 336 to 366 days) for the OP group and 354 days (interquartile range: 340 to 369 days) for the SP group. Twenty patients (10 in each group) had no run-in period and switched immediately to the trial medication.

Table 1. Distribution of Clinical Characteristics at Inclusion

Variable	Total (n=430)	OP Group (n=216)	SP Group (n=214)
Males (%), n	236 (55)	118 (55)	118 (55)
Age (SD), y	55 (11)	55 (11)	55 (11)
BMI (SD), kg/m ²	28 (4)	28 (5)	28 (4)
Smoking, n (%)	77 (18)	42 (19)	35 (16)
Alcohol, n (%)	329 (77)	169 (78)	160 (75)
Glucose (SD), mmol/L	5.5 (1)	5.4 (1)	5.6 (1)
Cholesterol (SD), mmol/L	5.7 (1)	5.7 (1)	5.7 (1)
Creatinine (SD), μ mol/L	82 (16)	82 (14)	82 (17)
Microalbuminuria, mg/24 h*	10.3	10.6	10.0
Treatment status, n (%)			
Untreated	132 (31)	64 (30)	68 (32)
1 drug	160 (37)	85 (39)	75 (35)
2 drugs	103 (24)	50 (23)	53 (25)
≥ 3 drugs	35 (8)	17 (8)	18 (8)
Previous antihypertensive treatment, n (%)			
Diuretics	116 (27)	55 (25)	61 (29)
ACE inhibitors	114 (27)	59 (27)	55 (26)
β -Blockers	120 (28)	57 (26)	63 (29)
Calcium channel blockers	51 (12)	27 (13)	24 (11)
Angiotensin II receptor blockers	65 (15)	35 (16)	30 (14)
α -Blockers	8 (2)	6 (3)	2 (1)

BMI indicates body mass index; ACE, angiotensin-converting enzyme.

*Results are given as medians.

Medication Use and Costs

Figure 2 shows that more patients from the SP group than from the OP group could permanently stop their medication because their BP values came below the present targets (10.7% versus 1.9%; log rank: <0.0001). Moreover, in the SP group, a greater proportion of patients reached a stable treatment level (treatment unchanged during the remaining part of the study) than in the OP group (54.0% versus 48.0%; log rank: <0.0001). On average, the SP group used 1 drug or 1 dose less in comparison with the OP group ($P<0.001$). Please see Table S1, available online at <http://hyper.ahajournals.org>, for more detailed information regarding medication use.

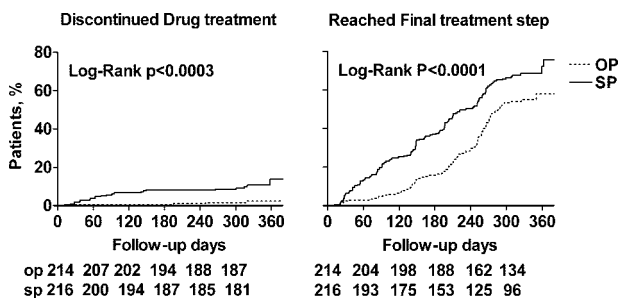


Figure 2. Graph showing the proportion of patients in both treatment groups in whom medication could be discontinued (left) or in whom a stable treatment was reached at target pressure during 1 year of follow-up.

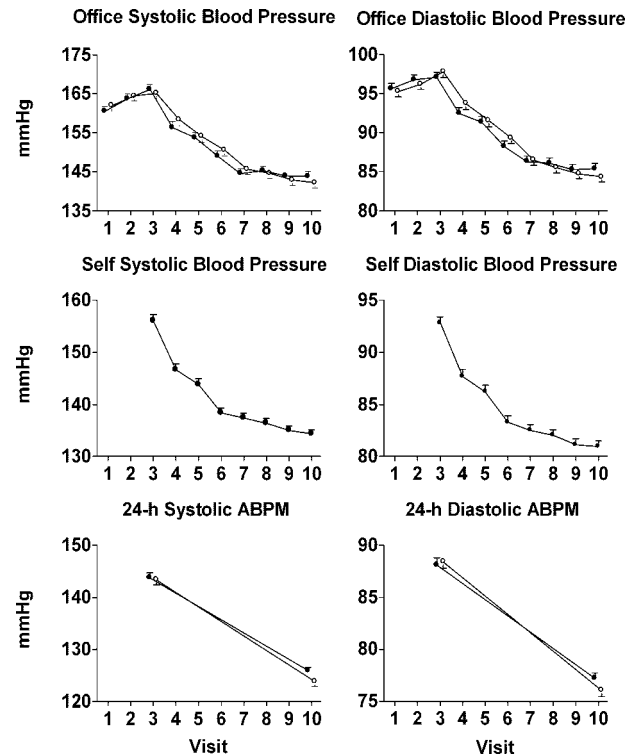


Figure 3. Graph showing time course of office BP (top), self-measured BP (middle), and mean 24-hour ambulatory BP in the office measurements group (○) and the self-measurement group (●).

Significant differences for certain drugs were mainly caused by the fact that patients in the OP group were at a higher level of the treatment schedule. At the end of the trial, significantly more patients in the OP group than in the SP group received atenolol because of adverse effects to lisinopril (mostly dry cough).

Medication costs during the whole study amounted to \$4147 in the OP group and \$3023 in the SP group per 100 patients for 1 month of treatment, resulting in a saving in medication costs of \$1124 ($P<0.001$). With inclusion of the fees for pharmacist, costs amounted to \$4420 and \$3222 ($P<0.001$) for the OP and SP group, respectively. The profit in the SP group is partially offset by the cost of the BP device, which was \$490 for 100 patients for 1 month. However, when corrected for these costs, the SP group still has lower treatment costs than the OP group ($P=0.03$). The total number of visits in the trial was similar in the SP and OP group, 2012 versus 2066, with a mean charge of \$70 and \$71 for the OP and SP group, respectively.

BP Control

Figure 3 illustrates the time course of BP patterns. Systolic OBPM increased after visit 1 when the run-in period started and regular antihypertensive treatment was discontinued. At visit 3, more patients were hypertensive according to their systolic BP than to their diastolic BP ($n=391$ versus $n=342$). Both groups showed almost similar BP patterns throughout the trial. Although SBPM followed the same pattern during follow-up as OBPM, at every visit SBPM was significantly lower than OBPM ($P<0.001$). Of the 42 SBPMs that had to

Table 2. BP Values at the End of the Run-In Period and at the End of the Trial

BP	Time	OP Group (n=214), mean±SD, mm Hg	SP Group (n=216), mean±SD, mm Hg	Difference Mean, OP–SP (95% CI)	P
OBPM systolic	End run-in	165.1±20.8	166.2±19.3	–1.0 (–4.8 to 2.8)	0.46
	End trial	142.2±20.0	143.8±18.4	–1.6 (–5.3 to 2.0)	0.29
OBPM diastolic	End run-in	97.8±10.8	97.1±9.9	0.7 (–1.2 to 2.7)	0.57
	End trial	84.3±9.6	85.4±10.4	–1.0 (–2.9 to 0.9)	0.13
SBPM systolic	End run-in	NA	156.1±16.9	NA	NA
	End trial	NA	134.3±12.2	NA	NA
SBPM diastolic	End run-in	NA	92.8±9.0	NA	NA
	End trial	NA	80.9±8.1	NA	NA
ABPM 24-h systolic	End run-in	143.4±13.5	143.7±13.8	0.4 (–3.0 to 2.3)	0.84
	End trial	123.8±12.2	125.9±9.0	–2.1 (–4.3 to 0.0)	0.04
ABPM 24-h diastolic	End run-in	88.4±8.8	88.1±9.7	0.3 (–1.5 to 2.1)	0.93
	End trial	76.1±7.9	77.2±7.4	–1.1 (–2.7 to 0.4)	0.05
ABPM day systolic	End run-in	149.5±14.5	149.3±14.8	0.1 (–2.8 to 3.0)	0.78
	End trial	129.1±12.8	131.2±10.7	–2.2 (–4.5 to 0.2)	0.03
ABPM day diastolic	End run-in	93.6±9.3	92.7±10.5	1.0 (–1.0 to 2.9)	0.48
	End trial	80.4±8.4	81.6±8.6	–1.2 (–2.9 to 0.5)	0.05
ABPM night systolic	End run-in	127.6±15.8	127.9±14.5	–0.3 (–3.3 to 2.7)	0.93
	End trial	110.1±12.5	112.3±10.1	–2.2 (–4.5 to 0.1)	0.03
ABPM night diastolic	End run-in	76.1±10.4	76.2±10.5	–0.1 (–2.2 to 2.0)	0.81
	End trial	65.5±8.8	66.4±7.5	–1.0 (–2.6 to 0.7)	0.14

NA indicates not applicable. BP values are adjusted for baseline value, sex, age, body mass index, smoking, region of inclusion, and for a run-in period (yes or no). Bold printed indicates a significant between-group difference ($P<0.05$). All within-group changes were significant ($P<0.001$).

be performed before each visit, patients measured their BP on average 39 times. Table 2 illustrates OBPM, SBPM, and ABPM values at the end of the run-in period and at the end of the trial. Although OBPM values were similar at the end of the trial, ABPM values were significantly lower in the OP group than in the SP group.

In the OP group, 409 treatment decisions (24%) were based on elevated systolic BP only, 48 (3%) on elevated diastolic BP only, and 699 (41%) on an elevation of both systolic and diastolic BP. In the SP group, these numbers were 357 (21%), 34 (2%), and 398 (23%), respectively. Both for systolic and diastolic BP, no significant differences in OBPM between the randomly assigned groups were found at the end of the trial for either absolute BP values ($P=0.25$ and $P=0.20$) or for changes in BP ($P=0.77$ and $P=0.14$).

Refractory or Resistant Hypertension

The number of patients with refractory or resistant hypertension (defined as the use of 3 different antihypertensives, whereas OBPM is still >140 mm Hg systolic and/or 90 mm Hg diastolic) was significantly higher in the OP group than in the SP group (38 [18%] versus 19 [9%]; $P<0.01$).

Target BP

At the end of the trial, 106 patients (50%) in the OP group had an OBPM value $<140/90$ mm Hg, whereas in the SP group, 160 patients (74%) had reached a final SBPM value that was $<140/90$ mm Hg ($P<0.001$). If we took the number of patients from the SP group who reached a SBPM value of

135/85 mm Hg, there were 112 patients (52%) who reached this target. At the last visit, 18 patients (8%) from the SBPM group had a normal OBPM but an elevated SBPM (masked hypertension).

TOD

Changes in left ventricular mass index were similar in both groups: -6.5 ± 1.7 g/m² (from 98.3 to 91.8 g/m²) versus -5.6 ± 1.7 g/m² (from 96.4 to 90.8 g/m²) for the OP and SP group, respectively ($P=0.72$). Median changes in urinary microalbumin concentration were also similar: from 10.0 to 8.3 mg per 24 hours and from 10.7 to 9.2 mg per 24 hours for the OP and SP group, respectively ($P=0.87$). Within-group reductions in left ventricular mass index and microalbuminuria concentrations were significant for both randomly assigned groups ($P<0.001$). No significant differences between groups were found for other laboratory variables.

Pill Count

Pill counts, which were assessed in all of the patients, indicated that medication intake was similar in both arms: 88.1% in the OP group versus 87.3% in the SP group ($P=0.62$).

Adverse Effects

For reported frequency of symptoms and adverse effects per visit, please see Table S2. Headaches, joint complaints, flushing of face or neck, light-headedness, and sleepiness were the most frequently mentioned symptoms ($>35\%$).

Discussion

Our results show that adjustment of antihypertensive therapy based on SBPM can reduce the number of drugs without loss of OBPM control or an increase in the number of refractory hypertensive patients. Yet, a tendency toward slightly worse ABPM control was noted in patients of the SP group as compared with those of the OP group. Despite the latter, regression of TOD was comparable in the 2 groups. In addition, patients in the SP group had a similar chance to reach the target BP value as those in the OP group when this target was set at 135/85 mm Hg for SBPM. Finally, significantly more patients in the SP group could permanently stop their antihypertensive medication, suggesting that SBPM may be a valuable tool to prevent unnecessary drug prescription.

This study must be interpreted within the context of its limitations. BP measurements were not performed with a memory-equipped device, thus leaving room for observer bias; patients may have measured BP more often than needed and selected 3 preferred measurements. In some practices, OBPM was performed by a nurse instead of a physician, which may have resulted in lower BP values.¹⁴ Hence, some dilution cannot entirely be excluded, although patients were equally divided between the 2 groups in these practices.

The present study chose to take 140/90 mm Hg as the target of treatment for SBPM instead of the 135/85 mm Hg, which is presently recommended.¹⁵ This may have caused some undertreatment in the SP group relative to the OP group. However, at the time the protocol for HOMERUS was written, there was no agreement on what should be the upper limit for SBPM,¹⁶ because only some cross-sectional studies^{17–22} and 1 longitudinal study²³ had addressed this subject by then. Second, the guidelines that recommend 135/85 mm Hg as the threshold for SBPM prescribe that OBPM is taken with a mercury sphygmomanometer and SBPM with an oscillometric automatic device. In the present study, both SBPM and OBPM have been performed with the same oscillometric automatic device so that there were no differences in BP values caused by the device. Third, the recommendations for OBPM prescribe that 2 measurements should be performed.²⁴ In the present study, 3 measurements have been obtained, which generally leads to lower average OBPM values, because the first measurement is usually higher than subsequent ones.²⁵ Lower OBPM values tend to dilute the differences between OBPM and SBPM.

Recently, the results of the Treatment of Hypertension based on home or Office blood Pressure (THOP) Trial²⁶ were published which showed that patients whose medical treatment was based on SBPM had poorer OBPM and ABPM values than patients in whom treatment was based on OBPM. Although the THOP Trial seems largely similar to HOMERUS, there are some important differences. Firstly, in the THOP Trial, treatment was based on diastolic BP (<90 mm Hg) only, because at the time the World Health Organization still defined hypertension exclusively on the basis of diastolic BP. However, in the present study, more patients were hypertensive according to their systolic BP than to their diastolic BP at baseline. In addition, during follow-up, a quarter of all treatment decisions were based on elevated systolic BP only. For optimal management of hypertension, a

well-controlled systolic BP is important, because it correlates significantly stronger with the risk of cardiovascular or all-cause death²⁷ than diastolic BP. Second, in the THOP Trial, OBPMs were performed with a manual mercury sphygmomanometer, whereas an automatic device was applied for SBPM. The use of different devices complicates comparisons between both strategies, and, in addition, manual sphygmomanometers are more liable to observer bias.²⁸ Third, in HOMERUS, patients in the OP group did not perform SBPM. Although this has the disadvantage that it is impossible to keep the patient blinded for randomization, it certainly better represents the normal clinical situation, which is important, because SBPM influences a patients' behavior.²⁹

The cost-effectiveness of SBPM has also been evaluated in the THOP Trial. Our study confirmed that a significant reduction in medication intensity and costs can be reached. The maximum difference in treatment costs was obtained at the end of the study. When these costs were extrapolated to the next year, this led to an even greater reduction in costs in favor of the SP group.

At the end of the trial, ABPM values were higher in the SP than in the OP group. Although this could mean that antihypertensive treatment based on SBPM leads to worse BP control as compared with OBPM-based treatment, we must realize that the reproducibility of ABPM is limited.³⁰ Although differences in mean ABPM and OBPM values between both groups are small and perhaps not relevant for a patient as an individual, these results cannot be ignored, because even small differences can have serious consequences with respect to cardiovascular complications in the population at large. Indeed, a meta-analysis of individual data for 1 million adults in 61 prospective studies showed that a 2-mm Hg–lower systolic BP value would eventually lead to a 10% lower stroke mortality and ≈7% lower mortality from ischemic heart diseases or other vascular causes in middle-age patients.³¹

From these results, one may be inclined to think that it is better to base antihypertensive treatment on OBPM instead of SBPM. However, we believe that the present article offers several arguments that favor SBPM above OBPM. First of all, when we apply a threshold of 135/85 mm Hg as the treatment target in the SBPM patients, 52% actually reached this goal, which is quite similar to the 50% of OBPM patients who reached their target of 140/90 mm Hg OP. When using 135/85 mm Hg as a threshold value, there were 104 patients in the SP group who did not reach the target BP. Let us assume that these patients would need, on average, 1 additional treatment step to reach this target. If we consider the most expensive step at any occasion (Lisinopril, \$15 for 1 month of treatment), the necessary additional costs for treatment would be $104 \times \$15 = \1560 for 1 month of treatment. For the whole SP population, this would equal $\$1560 / 216 = \7.22 per patient for 1 month of treatment. When added to the \$3023, this would increase total costs in the SP group to \$3745, which is still less than the \$4147 for the OP group. This, together with the fact that half of the patients from the OP group also need additional treatment to reach their target BP of 140/90 mm Hg, indicates that it is most likely that treatment based on SBPM would lead to BP values similar to

those in patients from the OP group with less medication. The second argument for using SBPM is the presence of masked hypertension, which is defined as a BP that is normal in the office but elevated when measured at home.³² In the present study, 18 patients (8%) from the SP group had this phenomenon at the last visit. Other studies have shown that these patients have a similar risk of cardiovascular complications as "true" subjects with hypertension. Third, there were significantly less patients with refractory or resistant hypertension in the SP group than in the OP group. Finally, both the OP group and the SP group experienced a similar reduction in TOD (heart and kidney), which would imply that the SP group was not worse off.

Based on earlier data, one would expect that patients from the SP group would be more adherent to their medication than patients from the OP group, because SBPM increases patients' awareness of their disease.³³ However, the high overall adherence rate in both treatment groups as observed in the present study likely reflects some inherent motivation of patients who are willing to participate in a clinical trial. In this respect, SBPM had little additional value.

In conclusion, the findings in this randomized trial show that, in a population of mild-to-moderate hypertensive subjects without significant comorbidity, antihypertensive treatment based on SBPM is not associated with worse OBPM control, with more TOD, with an increased number of refractory hypertensive patients, or with a lower chance of reaching target BP as compared with treatment based on OBPM. In addition, SBPM does lead to decreased use of medication and, thus, less overall healthcare costs and adverse effects. Therefore, our findings support the use of SBPM in addition to OBPM in regular clinical care to improve overall BP control and to prevent unnecessary treatment prescriptions with associated healthcare costs. However, because the ambulatory BP was less well controlled in patients from the SP group than in patients from the OP group, the present study did not provide hard evidence that it is safe to base antihypertensive treatment on SBPM readings. Because this can be partly ascribed to using a threshold value of 140/90 mm Hg, we recommend the use of the proposed values of 135 mm Hg systolic and 85 mm Hg diastolic as the threshold values for normal SBPM.

Perspectives

Treatment based on SBPM using a threshold value of 140/90 mm Hg leads to less drug prescription than treatment based on OBPM. However, this also leads to slightly higher ABPM values that, in the long run and extended to a large population, may still lead to an increase in cardiovascular events. Therefore, large outcome trials with a longer follow-up period are necessary to confirm or refute the significance of our present findings. It should also be emphasized that our results are applicable only to the specific population of hypertensive patients that we included in our trial. It would be worthwhile to assess whether SBPM has the same implications in patients with comorbid conditions, such as diabetes mellitus or renal impairment, as well as in populations with a different racial background. Finally, the present data may serve as a starting point for

more elaborate cost-effectiveness studies and reimbursement of BP monitoring devices.

Sources of Funding

This study was funded by The Netherlands Organization for Health Research and Development (Health Care Efficiency Research Program grant 945-01-043).

Disclosures

None.

References

1. Chobanian AV, Bakris GL, Black HR, Cushman WC, Green LA, Izzo JL Jr, Jones DW, Materson BJ, Oparil S, Wright JT Jr, Roccella EJ. Seventh report of the Joint National Committee on Prevention, Detection, Evaluation, and Treatment of High Blood Pressure. *Hypertension*. 2003;42:1206–1252.
2. Pickering TG, Gerin W, Schwartz AR. What is the white-coat effect and how should it be measured? *Blood Press Monit*. 2002;7:293–300.
3. Stergiou GS, Efstathiou SP, Argyraki CK, Roussias LG, Moutokalakis TD. White coat effect in treated versus untreated hypertensive individuals: a case-control study using ambulatory and home blood pressure monitoring. *Am J Hypertens*. 2004;17:124–128.
4. Staessen JA, Byttebier G, Buntinx F, Celis H, O'Brien ET, Fagard R. Antihypertensive treatment based on conventional or ambulatory blood pressure measurement. A randomized controlled trial. Ambulatory Blood Pressure Monitoring and Treatment of Hypertension Investigators. *JAMA*. 1997;278:1065–1072.
5. Mule G, Caimi G, Cottone S, Nardi E, Andronico G, Piazza G, Volpe V, Federico MR, Cerasola G. Value of home blood pressures as predictor of target organ damage in mild arterial hypertension. *J Cardiovasc Risk*. 2002;9:123–129.
6. Kario K, Shimada K, Pickering TG. Clinical implication of morning blood pressure surge in hypertension. *J Cardiovasc Pharmacol*. 2003; 42(suppl 1):S87–S91.
7. Ohkubo T, Imai Y, Tsuji I, Nagai K, Kato J, Kikuchi N, Nishiyama A, Aihara A, Sekino M, Kikuya M, Ito S, Satoh H, Hisamichi S. Home blood pressure measurement has a stronger predictive power for mortality than does screening blood pressure measurement: a population-based observation in Ohasama, Japan. *J Hypertens*. 1998;16:971–975.
8. Cuspidi C, Michev I, Meani S, Salerno M, Valerio C, Fusi V, Bertazzoli G, Magrini F, Zanchetti A. Left ventricular hypertrophy in treated hypertensive patients with good blood pressure control outside the clinic, but poor clinic blood pressure control. *J Hypertens*. 2003;21:1575–1581.
9. Verberk WJ, Kroon AA, Kessels AG, Dirksen C, Nelemans PJ, Lenders JW, Thien TA, van Montfrans GA, Smit AJ, de Leeuw PW. Home Versus Office Blood Pressure Measurements: Reduction of Unnecessary Treatment Study: rationale and study design of the HOMERUS trial. *Blood Press*. 2003;12:326–333.
10. Verberk WJ, Kroon AA, Kessels AG, Nelemans PJ, Van Ree JW, Lenders JW, Thien T, Bakx JC, Van Montfrans GA, Smit AJ, Beltman FW, De Leeuw PW. Comparison of randomization techniques for clinical trials with data from the HOMERUS-trial. *Blood Press*. 2005;14:306–314.
11. Pocock SJ, Simon R. Sequential treatment assignment with balancing for prognostic factors in the controlled clinical trial. *Biometrics*. 1975;31:103–115.
12. O'Brien E, Mee F, Atkins N, Thomas M. Evaluation of three devices for self-measurement of blood pressure according to the revised British Hypertension Society Protocol: the Omron HEM-705CP, Philips HP5332, and Nissei DS-175. *Blood Press Monit*. 1996;55–61.
13. Bulpitt CJ, Fletcher AE. The measurement of quality of life in hypertensive patients: a practical approach. *Br J Clin Pharmacol*. 1990;30:353–364.
14. La Batide-Alanore A, Chatellier G, Bobrie G, Fofol I, Plouin PF. Comparison of nurse- and physician-determined clinic blood pressure levels in patients referred to a hypertension clinic: implications for subsequent management. *J Hypertens*. 2000;18:391–398.
15. O'Brien E, Asmar R, Beilin L, Imai Y, Mancia G, Mengden T, Myers M, Padfield P, Palatini P, Parati G, Pickering T, Redon J, Staessen J, Stergiou G, Verdecchia P. Practice guidelines of the European Society of Hypertension for clinic, ambulatory and self blood pressure measurement. *J Hypertens*. 2005;23:697–701.

16. Pickering T. Recommendations for the use of home (self) and ambulatory blood pressure monitoring. American Society of Hypertension Ad Hoc Panel. *Am J Hypertens*. 1996;9:1–11.
17. de Gaudemaris R, Chau NP, Mallion JM. Home blood pressure: variability, comparison with office readings and proposal for reference values. Groupe de la Mesure, French Society of Hypertension. *J Hypertens*. 1994;12:831–838.
18. Imai Y, Satoh H, Nagai K, Sakuma M, Sakuma H, Minami N, Munakata M, Hashimoto J, Yamagishi T, Watanabe N, Yabe T, Nishiyama A, Nakatsuka H, Koyama T, Abe K. Characteristics of a community-based distribution of home blood pressure in Ohasama in northern Japan. *J Hypertens*. 1993;11:1441–1449.
19. Mancia G, Sega R, Bravi C, De Vito G, Valagussa F, Cesana G, Zanchetti A. Ambulatory blood pressure normality: results from the PAMELA study. *J Hypertens*. 1995;13:1377–1390.
20. Mejia AD, Julius S, Jones KA, Schork NJ, Kneisley J. The Tecumseh Blood Pressure Study. Normative data on blood pressure self-determination. *Arch Intern Med*. 1990;150:1209–1213.
21. Weisser B, Grune S, Burger R, Blickenstorfer H, Iseli J, Michelsen SH, Opravil R, Rageth S, Sturzenegger ER, Walker P, Widmer W, Vetter W. The Dubendorf Study: a population-based investigation on normal values of blood pressure self-measurement. *J Hum Hypertens*. 1994;8:227–231.
22. Staessen JA, Bieniaszewski L, O'Brien ET, Imai Y, Fagard R. An epidemiological approach to ambulatory blood pressure monitoring: the Belgian Population Study. *Blood Press Monit*. 1996;1:13–26.
23. Tsuji I, Imai Y, Nagai K, Ohkubo T, Watanabe N, Minami N, Itoh O, Bando T, Sakuma M, Fukao A, Satoh H, Hisamichi S, Abe K. Proposal of reference values for home blood pressure measurement: prognostic criteria based on a prospective observation of the general population in Ohasama, Japan. *Am J Hypertens*. 1997;10:409–418.
24. O'Brien E, Asmar R, Beilin L, Imai Y, Mallion JM, Mancia G, Mengden T, Myers M, Padfield P, Palatini P, Parati G, Pickering T, Redon J, Staessen J, Stergiou G, Verdecchia P. European Society of Hypertension recommendations for conventional, ambulatory and home blood pressure measurement. *J Hypertens*. 2003;21:821–848.
25. Stergiou GS, Thomopoulou GC, Skeva II, Mountokalakis TD. Home blood pressure normalcy: the Didima study. *Am J Hypertens*. 2000;13:678–685.
26. Staessen JA, Den Hond E, Celis H, Fagard R, Keary L, Vandenhoven G, O'Brien ET. Antihypertensive treatment based on blood pressure measurement at home or in the physician's office: a randomized controlled trial. *JAMA*. 2004;291:955–964.
27. Sega R, Facchetti R, Bombelli M, Cesana G, Corrao G, Grassi G, Mancia G. Prognostic value of ambulatory and home blood pressures compared with office blood pressure in the general population: follow-up results from the Pressioni Arteriose Monitorate e Loro Associazioni (PAMELA) study. *Circulation*. 2005;111:1777–1783.
28. Bruce NG, Shaper AG, Walker M, Wannamethee G. Observer bias in blood pressure studies. *J Hypertens*. 1988;6:375–380.
29. Verberk WJ, Kroon AA, Kessels AG, de Leeuw PW. Home blood pressure measurement a systematic review. *J Am Coll Cardiol*. 2005;46:743–751.
30. van der Steen MS, Lenders JW, Graafma SJ, den Arend J, Thien T. Reproducibility of ambulatory blood pressure monitoring in daily practice. *J Hum Hypertens*. 1999;13:303–308.
31. Lewington S, Clarke R, Qizilbash N, Peto R, Collins R. Age-specific relevance of usual blood pressure to vascular mortality: a meta-analysis of individual data for one million adults in 61 prospective studies. *Lancet*. 2002;360:1903–1913.
32. Pickering TG, Davidson K, Gerin W, Schwartz JE. Masked hypertension. *Hypertension*. 2002;40:795–796.
33. Marquez-Contreras E, Martell-Claros N, Gil-Guillen V, de la Figuera-Von Wichmann M, Casado-Martinez JJ, Martin-de Pablos JL, Figueras M, Galera J, Serra A. Efficacy of a home blood pressure monitoring programme on therapeutic compliance in hypertension: the EAPACUM-HTA study. *J Hypertens*. 2006;24:169–175.

Self-Measurement of Blood Pressure at Home Reduces the Need for Antihypertensive Drugs: A Randomized, Controlled Trial

Willem J. Verberk, Abraham A. Kroon, Jacques W.M. Lenders, Alfons G.H. Kessels, Gert A. van Montfrans, Andries J. Smit, Paul-Hugo M. van der Kuy, Patricia J. Nelemans, Roger J.M.W. Rennenberg, Diederick E. Grobbee, Frank W. Beltman, Manuela A. Joore, Daniëlle E.M. Brunenberg, Carmen Dirksen, Theo Thien and Peter W. de Leeuw
for the Home Versus Office Measurement, Reduction of Unnecessary Treatment Study Investigators

Hypertension. 2007;50:1019-1025; originally published online October 15, 2007;
doi: 10.1161/HYPERTENSIONAHA.107.094193

Hypertension is published by the American Heart Association, 7272 Greenville Avenue, Dallas, TX 75231
Copyright © 2007 American Heart Association, Inc. All rights reserved.
Print ISSN: 0194-911X. Online ISSN: 1524-4563

The online version of this article, along with updated information and services, is located on the World Wide Web at:

<http://hyper.ahajournals.org/content/50/6/1019>

Data Supplement (unedited) at:

<http://hyper.ahajournals.org/content/suppl/2007/10/05/HYPERTENSIONAHA.107.094193.DC1>

Permissions: Requests for permissions to reproduce figures, tables, or portions of articles originally published in *Hypertension* can be obtained via RightsLink, a service of the Copyright Clearance Center, not the Editorial Office. Once the online version of the published article for which permission is being requested is located, click Request Permissions in the middle column of the Web page under Services. Further information about this process is available in the [Permissions and Rights Question and Answer](#) document.

Reprints: Information about reprints can be found online at:
<http://www.lww.com/reprints>

Subscriptions: Information about subscribing to *Hypertension* is online at:
<http://hyper.ahajournals.org/subscriptions/>

MS ID#: HYPERTENSION/2007/094193 Supplemental file

Appendix **Table S1** Antihypertensive drugs for the two treatment groups used during follow-up

	1 Month	<i>p</i>	2 Month	<i>p</i>	4 month	<i>p</i>	6 Month	<i>p</i>	8 Month	<i>p</i>	10 Month	<i>p</i>
Treatment score, mean (SD)												
OP	0.52 (0.21)	<0.05	0.90 (0.39)	<0.001	1.78 (0.91)	<0.001	2.11 (1.15)	<0.001	2.36 (1.3)	<0.001	2.48 (1.44)	<0.001
SP	0.47 (0.20)		0.75 (0.39)		1.27 (0.90)		1.45 (1.07)		1.57 (1.17)		1.67 (1.3)	
Study medication , % of patients (median dose, mg/d)												
Lisinopril												
OP	85.3 (10)	.97	66.8(20)	< .01	61.7(20)	<.05	44.2(20)	.82	38.4(20)	.54	34.2(20)	.20
SP	85.2 (10)		53.3(20)		51.5(20)		43.1(20)		41.5(20)		40.5(20)	
HCTZ												
OP	1.9 (12.5)	.40	7.7(12.5)	.14	63.3(12.5)	< .01	56.3(12.5)	.07	46.3(12.5)	.45	41.6(12.5)	.83
SP	0.9 (12.5)		4.2(12.5)		48.5(12.5)		47.0(12.5)		42.5(12.5)		40.5(12.5)	
Amlo												
OP	0		1.9 (5)	.40	41.8(5)	< .01	50.5(5)	<.001	45.3(5)	.05	37.4(5)	.27
SP	0		0.9 (5)		26.0(5)		31.2(5)		35.5(5)		32.0(5)	
Atenolol												
OP	4.3 (50)	.07	7.7 (50)	.21	10.7 (100)	<.32	15.3 (100)	.053	16.3(100)	<.05	18.9(100)	<.05
SP	1.4 (50)		4.7 (50)		7.8 (100)		8.9 (100)		9.0(100)		10.0(100)	

OP indicates the office pressure group; SP, self pressure group; HCTZ, hydrochlorothiazide; Amlo, amlodipine. Median daily doses of study drugs were compared between both groups;

Appendix Table S2 Frequency of symptoms and side-effects in percentage per 100 patients

Symptoms and side effects	1 month		3 months		7 months		12 months	
	SBPM	OPBM	SBPM	OPBM	SBPM	OPBM	SBPM	OPBM
Light-headedness	43	37	36	39	39	35	40	32
Sleepy during the day	42	44	41	42	38	40	42	40
Weakness in the limbs	22	22	23	22	25	26	22	23
Blurring of vision	38	32	30	30	29	30	30	24
Short of breath	8	13	8	14	9	9	13	12
Swollen ankles	19	13	17	14	15	14	12	15
Loose or liquid motions	18	21	21	25	19	16	19	22
Constipation	6	5	7	4	11	4	14	8
Dry mouth	34	29	27	24	25	21	25	14
Bad taste	15	10	8	11	11	10	9	5
Blocked or runny nose	37	36	36	39	32	33	36	30
Dry cough	26	29	38	43	39	43	41	37
Flushing face or neck	44	39	40	38	30	39	32	30
Nightmares	11	7	10	11	7	6	10	9
Sick or vomited	10	8	9	10	11	8	7	6
Rash	13	22	19	13	16	12	13	10
Itching	22	24	24	19	20	11	27	20
White fingers	17	20	14	18	21	21	20	25
Headaches	55	58	45	39	38	31	34	23
Dry painful eyes	23	19	21	18	21	21	23	16

Palpitations	33	29	20	26	20	18	16	18
Non-adherence because of side effects	3	6	2	3	7	6	5	2
Muscle spasm	24	27	21	26	30	25	30	26
Joint complaints	43	35	38	35	37	29	41	35
Shortness of breath	20	22	18	19	18	20	20	16
To doctor for complaints	41	38	25	26	34	24	26	22

SBPM indicates self blood pressure measurement; ABPM, ambulatory blood pressure measurement.

Acknowledgments

The following persons contributed to HOMERUS:

Executive committee

P.W. de Leeuw, chairman

A.A. Kroon

Th.A.B.M. Thien

J.W.M. Lenders

A.J.Smit

G.A. van Montfrans

Steering Committee

P.W. de Leeuw, chairman

A.A. Kroon

W.J. Verberk

J.W. van Ree

Th.A.B.M. Thien

J.W.M. Lenders

A.J. Smit

F.W. Beltman

G.A. van Montfrans

Safety and Data Monitoring Committee

D.E. Grobbee, chairman

H. Wollersheim

A.H. van den Meiracker

Investigators Maastricht region

C.H.R. Houben-Beyrus

E.M.A. Brand-Schmets

W.E.M. van de Broek

G.A.H.M. Castermans

C. Dirksen

A.J. Drost

F.I. Guldemon

C.S. Hoogervorst

H.A. Jongen-Vancraybex

M.A. Joore

A.G.H. Kessels

A.A. Kroon

P.H. van der Kuy

P.W. de Leeuw

F.P.J.A. Macco

J.F.M. Metsemakers

P.J. Nelemans

J.W. van Ree

R.J.M.W. Rennenberg

M. Rennenberg-Stokbroek

R.C.B. Ubachs

S.J. Vasbinder-Verbeeten

W.J. Verberk

P.M. Voorhoeve

Investigators Nijmegen region

C.J. Bakx

W.H.E.M van Gerwen

W.J.C. de Grauw

J.P.H. van den Hoogen

A.J. Jansen-van Rosendaal

J.W.M. Lenders

M.J. Metz

E.A.M. Olde Riekerink-Wijermans

Th.A.B.M. Thien

C. Verhoeff

Investigators Amsterdam region

G.A. van Montfrans

M. Rotterdam-Cammenga

Investigators Groningen region

F.W. Beltman

A. Nicolai

A.J. Smit