

CHRIST THE KING SUNDAY

NOVEMBER 20, 2022



FIRST PRESBYTERIAN CHURCH

508 WEST DAVIS STREET

BURLINGTON, NORTH CAROLINA 27215

www.fpcburlington.org

*Please join in
reading aloud
those parts of the
service printed
in **bold**.*

*The congregation
is invited to
reflect silently
during the Music
for Preparation
as a time of
prayer and
meditation.*

*When this
symbol (*)
precedes an
element of the
service, please
rise in body or
spirit.*

*We lay before
God our own
sins, the sins and
brokenness of
our fellow
worshipers, the
church universal,
and the world.*

GATHERING AROUND THE WORD

WELCOME AND ANNOUNCEMENTS

The grace of our Lord Jesus Christ be with you all.

And also with you.

Let us prepare our hearts to worship God.

MUSIC FOR PREPARATION

Fanfare

Healey Willan (1880-1969)

CALL TO WORSHIP

Blessed is the Lord our God.

Who has sent us a mighty Savior.

Blessed is the Lord Jesus Christ.

Who reigns in glory forever.

Come, let us worship God.

*PROCESSIONAL HYMN – NO. 275

A Mighty Fortress Is Our God

EIN' FESTE BURG

*CALL TO CONFESSION

*CORPORATE PRAYER OF CONFESSION

Sovereign God, we confess that we have not turned away from sin.

You sent Jesus down to save us from our errant ways
and we handed him over to die.

You lifted him up on the cross
and still we mocked your holy realm.

We ignore your strength and power in so many ways.

Forgive us, God of grace.

We know not what we do.

Save us from our sin and death,
so that we may know true life in you;
through Jesus Christ our Lord.

*SILENT PRAYER OF CONFESSION

*CONGREGATIONAL RESPONSE

Lord, Have Mercy (Kyrie Eleison)

adapted by Richard Proulx

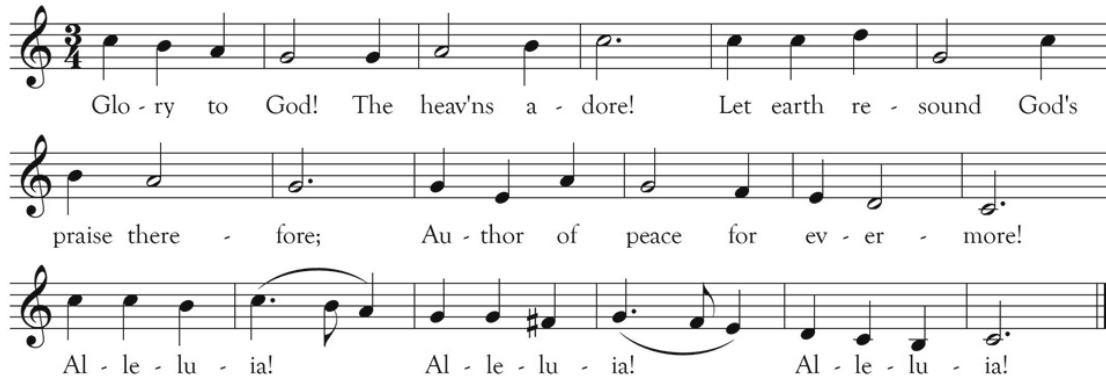


***ASSURANCE OF PARDON**

***CONGREGATIONAL RESPONSE**

Glory to God!

GELOBT SEI GOTT



Text: Michael Morgan

***PASSING THE PEACE, LOVE, AND JOY OF CHRIST TO OTHERS**

The peace of the Lord Jesus Christ be with you.
And also with you.

The astoundingly good news of our reconciliation to God through Jesus Christ frees our tongues to sing mighty praise to God.

We exchange reconciling words and gestures among the people of God.

LISTENING FOR THE WORD

STORY TELLING (11:00)

PRAYER FOR ILLUMINATION

OLD TESTAMENT READING: Psalm 46

Large Print Pew Bible, pages 636-637

Pew Bible, pages 517-518

The Word of the Lord.
Thanks be to God.

We listen for what God is saying to God's people through scripture, song, and sermon.

ANTHEM (11:00)

Everywhere I Go

Natalie Sleeth (1930-1992)

Children's Choir

Everywhere I go, the Lord is near me, If I call upon him he will hear me,
Never will I fear, for the Lord is near everywhere I go.
In the dark of night should things alarm me, Ever in his sight, no ill may harm me,
I will be of cheer for the Lord is near, everywhere I go.
He is with me day by day, he will be my strength and stay;
From his path I will not stray but follow in his way.
In the coming days of joy or sadness I will praise his name with songs of gladness,
For to me its clear that the Lord is near everywhere I go.

-Natalie Sleeth

NEW TESTAMENT READING: Colossians 1:11-20

Large Print Pew Bible, page 244

Pew Bible, page 200

The Word of the Lord.
Thanks be to God.

RESPONDING TO THE WORD

*Our response to
hearing God's
Word includes
singing and saying
what we believe.*

*HYMN OF RESPONSE – NO. 624

I Greet Thee, Who My Sure Redeemer Art

TOULON

*AFFIRMATION OF FAITH

- from *A Declaration of Faith*

We declare that Jesus is Lord.

His resurrection is a decisive victory

over the powers that deform and destroy human life.

His lordship is hidden.

The world appears to be dominated

by people and systems that do not acknowledge his rule.

But his lordship is real.

It demands loyalty and sets us free from the fear

of all lesser lords who threaten us.

We maintain that ultimate sovereignty now belongs to Jesus Christ

in every sphere of life.

Jesus is Lord!

He has been Lord from the beginning.

He will be Lord at the end.

Even now he is Lord.

PRAYERS OF THE PEOPLE

LORD'S PRAYER

Glory to God, The Presbyterian Hymnal, page 35

OFFERING OF TITHES AND GIFTS

MUSIC AT THE OFFERTORY

Of the Father's Love Begotten (8:30) setting by Wilbur Held (1919-2015)
(11:00) Plainchant

Of the Father's love begotten, ere the worlds began to be,
he is Alpha and Omega; he the source, the ending he,
of the things that are, that have been, and that future years shall see,
evermore and evermore!

By his Word was all created; he commanded; it was done:
heaven and earth and depths of ocean, universe of three in one,
all that sees the moon's soft shining, all that breathes beneath the sun,
evermore and evermore!

O, that birth forever blessed when the Virgin, full of grace,
by the Holy Ghost conceiving, bore the Savior of our race,
and the babe, the world's Redeemer, first revealed his sacred face,
evermore and evermore!

This is he whom seers in old time chanted of with one accord,
whom the voices of the prophets promised in their faithful word.
Now he shines, the long-expected. Let creation praise its Lord,
evermore and evermore!

O ye heights of heaven, adore him. Angel hosts, his praises sing.
Powers, dominions, bow before him, and extol our God and King.
Let no tongue on earth be silent; every voice in concert ring,
evermore and evermore!

Christ, to thee with God the Father, and, O Holy Ghost, to thee,
hymn and chant and high thanksgiving and unwearied praises be.
Honor, glory, and dominion, and eternal victory,
evermore and evermore! Amen.

*CONGREGATIONAL RESPONSE

Praise God from Whom All Blessings Flow

LASST UNS ERFREUEN

Praise God, from whom all bless-ings flow; Praise God, all crea-tures here be -
low; Al - le - lu - ia! Al - le - lu - ia! Praise God a -bove, ye heaven -ly
host; Praise Fa -ther, Son, and Ho - ly Ghost. Al - le - lu - ia, Al - le -
lu - ia! Al - le - lu - ia! Al - le - lu - ia! Al - le - lu - ia!

BEARING THE WORD INTO THE WORLD

*CHARGE AND BENEDICTION

*RECESSIONAL HYMN – No. 268

Crown Him with Many Crowns

DIADEMATA

*God blesses and
sends us in
mission to the
world.*

VOLUNTARY (11:00)

Now Thank We All Our God

Sigfrid Karg-Elert (1877-1933)

Stewart Rawson, D. Min., Transitional Pastor
Taylor Barner, M. Div., Associate Pastor for Student Ministries
Charlotte Nance-Allbright, M.A, C.C.E., Director of Christian Formation and Education
J. Patrick Murphy, M. Mus., Organist-Choirmaster

ANNOUNCEMENTS

A WARM AND CORDIAL WELCOME is extended to all who worship with us this Sunday. We hope in this service you will encounter the living Christ and experience the warmth of our caring family of faith. Please take a moment to sign our friendship register when it is passed to you. If you are visiting with us and in search of a church home, we invite you to become a part of our church family here at First Presbyterian Church. Please let us know of your interest by way of the friendship register, or by speaking to one of our ministers. If you are not receiving the weekly e-newsletter, please feel free to pick up a copy today in the narthex and then contact the church office to be added to the weekly email list.

COVER ART: *Pantocrator, God the Son, as the Creator of the Universe*, (ca. 1226-1234), as found in Toledo Cathedral, Spain.

LIVE TELEPHONE WORSHIP: To listen to the worship service, simply call 888-969-5508 each Sunday. You will also be given an option of receiving a weekly call prior to each worship service. Please help us and pass this information along to any church member or community member who would benefit from this opportunity.

LIVE VIDEO STREAMING SERVICE: *Boxcast* will stream to our website and Facebook page each Sunday morning. Click here to view: [on our website](#) and on [the FPC Facebook page](#).

LARGE PRINT HYMNS: Copies of today's hymns are available in the Narthex.

HEARING ASSISTANCE: The Sanctuary is fitted with a Hearing Loop system. Please switch your hearing device to T-coil. If you need a listening device, please contact one of our ushers.



PASTORAL CARE INFORMATION: If you have a personal emergency, hospitalization, or pastoral care need, please call the church office. If it is after office hours or on the weekend, you may call the minister on call: 11/18-11/20 Stewart Rawson (803-348-6143)

WELCOME-TO-WORSHIP ACTIVITY TABLE is located in the Narthex and available for children to receive a worship bulletin, pencil, crayon, children's Bible, and other activities. Bags to hold the worship resources are located in the basket under the table. Please return the supplies to the table at the end of worship.

NURSERY CARE PROVIDED: Each Sunday nursery services are available from 8:00 a.m. to 12:30 p.m. for children from birth through Pre-K age in Room 101. Kindergarten age and older are invited to worship. Our childcare providers are highly qualified FPC staff members with extensive child care experience, background checks and Child and Infant CPR training. Pagers are given to all guardians for immediate access as needed. Please ask an usher for more information.

WORSHIP SERVICE CDS AVAILABLE EACH WEEK: Each Sunday, the Scripture readings, anthem, and sermon will be recorded on CD. A limited number of copies will be available immediately after the worship service in the narthex. Additional copies may be requested by calling the church office. This same recording will be posted on the website.

OFFERING RITUAL: In the pew racks you will find "Offering Ritual" cards. The giving of our offerings and ourselves is vital part of worship in which we express our gratitude for God's blessings. The passing of the offering plate is a visible demonstration of our commitment to devote our time and treasures to Christ's ministry. If you give monthly, quarterly, annually; or through stocks, credit cards, or e-giving, you may still participate in the offering ritual by placing this card in the offering plate. If you are interested in giving electronically through our secure e-giving process, you will find instructions on the back side of this card. Scan this QR code to access FPC's online Giving with your Smartphone. It's easy to download a QR Code reader from the App Store!



FEED THE HUNGRY FOOD COLLECTION: Feeding the Hungry - Remember to grab a non-perishable food item every time you are at the store and bring it to First Presbyterian Church for the food pantry. A collection box is conveniently located outside the CDC entrance (Black and White Hallway entrance) for you to drop off your donations anytime during the week or on Sunday morning.

SPECIAL PRESENTATION - Footsteps of Paul: A Journey to Turkey and Greece: Please plan to join us **Sunday, November 20 at 9:45 a.m.** in Shive Hall when several members who recently participated in the "Footsteps of Paul" trip to Turkey and Greece. All three of Paul's missionary journeys were centered in ancient Turkey and two of them ended in Greece. We visited the cities of Athens, Corinth, Thessalonica, Philippi, Ephesus, Hierapolis and Troas. At these sites we discussed the birth, growth, trials and development of the earliest Christian congregations as they struggled not only to understand their new faith in Christ, but also as they dealt with false teachers and hostile forces opposed to the church. We will share our photos and stories from our trip. Hope you can join us.

OUR NOVEMBER GIVING: Alamance County Meals on Wheels (ACMOW) is our mission focus for November. This agency offers hot nutritional home-delivered meals, frozen home-delivered meals, and winter weather emergency meals to homebound seniors in our community. ACMOW is expanding its current facility to serve its growing number of clients adequately. This agency serves over 525 seniors on 24 different hot and frozen meal routes. Please refer to the Food Pantry List and the Birthday List posted on the Missions Bulletin Board and the links provided in the weekly eblast to see what supplementary food items and birthday treats you can contribute for the ACMOW clients. **Please leave your donations in the box marked "Meals on Wheels Donations" by the CDC entrance.** Thank you for giving generously!

ADVENT PRAYER CENTER explore, play, and engage with the idea "from darkness to light." Take time out of this busy world to sit with God, read scripture, explore images of light, and listen for God's still small voice of peace, hope, joy, and love. Beginning November 27 through January 6, Room 201 will be open Monday to Friday during office hours and Sunday from 8:00 a.m. to 12:00 p.m. and from 4:00-6:00 p.m. Be still and know that God is God.

Join the **JOHN KNOX FELLOWSHIP CLASS** at 9:45 a.m. in the John Knox Room on November 27 as we discuss "God Gives Tools for Our Protection" from The Present Word Curriculum. We will be looking at Revelation 2:1-7, Acts 19 and Ephesians 6:10-24

ADVENT DEVOTIONALS are available via a link in the eblast as well as a few hard copies outside the church office and in the Welcome Center. *Kindling the Flame of Love: A Celtic Advent Devotional* intentionally invites us to begin our Advent journey 40 days before the birth of Christ. Contact Charlotte Nance-Allbright callbright@fpcburlington.org for more information.

ALTERNATIVE GIVING FAIR will be open and ready for you to shop on December, 4, 11 and 18 between 9:00 and 11:00 a.m. and on other days or times by request. The Witherspoon Room will be the location for the fair. Come explore the local and global missions supported by First Presbyterian Church. When you "shop" you are loving God and loving your neighbors by providing funds so that our community partners can assist those in need. We will have a few tangible items for sale like handcrafted items from Peru, Haiti, and Zambia, as well as hand carved crèche sets from Palestine. We will have a variety of honor cards to buy and give as your Christmas greetings cards or as gifts to your loved ones and friends. Forms can also be completed and sent to the church office with your donation. Contact Charlotte Nance-Allbright 336-228-1703 x 223 or callbright@fpcburlington.org for more information.

A FESTIVAL OF LESSONS AND CAROLS: Sunday, December 11 marks the 60th offering of *A Festival of Lessons and Carols* at First Presbyterian Church. Carols of the season, sung by our choirs and congregation, will alternate with scripture lessons read by clergy. An ensemble of brass quintet, timpani and organ will accompany the choirs and congregation. Please mark your calendar for **Sunday, December 11 at 5:00 p.m.** (a prelude of carols will begin at 4:30 p.m.). An offering to support the Music Fund will be received.

CHRISTMAS DECORATIONS Poinsettias (\$35 each) for use in the sanctuary may be ordered as memorial or honorary flowers. Contributions as memorials or honoraria may also be made to defray costs of wreaths for our church doors, lamp posts, sanctuary sconces, balcony garland, etc. Please submit checks made payable to First Presbyterian Church (marked Christmas Decorations) and the order form below to the Church Office or place your notated check and the order form below in the offering plate. The deadline to order is Tuesday, December 6.

Christmas Decorations Order Form

Poinsettias (\$35 each)

Checks made payable to First Presbyterian Church ("Christmas Decorations" notated in the memo line

In Memory of _____

Donor _____

In Honor of _____

Donor _____

CALENDAR

Sunday, November 20

8:30 a.m. Worship Service — Williams Chapel
9:15 a.m. Coffee Fellowship — Welcome Center
9:45 a.m. Sunday School for Children, Youth and Adults
9:45 a.m. Special Presentation — Footsteps of Paul: A Journey to Turkey and Greece
— Shive Hall
10:00 a.m. Chancel Choir Rehearsal
11:00 a.m. Worship Service — Sanctuary
2:00 p.m. Youth Rake and Run
4:00 p.m. Children's Choir — Room 220
5:00 p.m. New Officer Training — Witherspoon Room
7:00 p.m. Stated Session Meeting — Witherspoon Room

Tuesday, November 22

7:30 a.m. High School Dough Devotions — The Park (S. Church St.)
7:00 p.m. BSA Troop 17 Meets — Garrison Joyner Activities Building

Wednesday, November 23

7:45 a.m. Meditation Group Meets via Zoom
7:00 p.m. Enrichment Class Meets via Zoom

Thursday, November 24—Friday, November 25

FPC Facilities Closed for Thanksgiving

