

# New Product Announcement

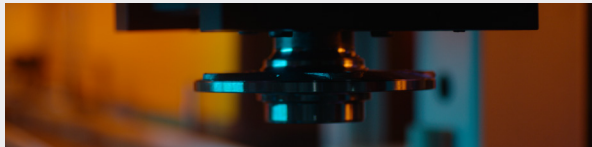


## WHEEL HUB ASSEMBLIES & BEARINGS

The GSP Hub Assembly & Bearing line is developed to support efficient repairs and reliable wheel-end performance. Manufactured with consistent quality standards, these assemblies deliver stable operation and durability that help minimize noise, reduce wear, and support Quality Driven installations.

**53 NEW NUMBERS • IN STOCK**

Total SKUs	53
US VIO	16,690,578



## PRODUCT FEATURES

- **Manufactured by GSP:** OE-level quality and controlled manufacturing to ensure consistent qu performance you can trust.
- **Optimized Bearing Performance:** Application-specific bearing clearances reduce vibration, improve rotational efficiency, and help prevent premature wear.
- **Advanced Materials:** High-grade steel alloys, precision machining, and controlled heat treatment deliver strength, consistency, and long service life under load.

GSP No.	Position	Application	VIO
108004B	Rear	1988-2023 Chevrolet Silverado 1500 Wheel Bearing	5,000,000
690055HA	Front	2019-2025 Lexus ES250 Hub Assembly From 08/2023	1,463,521
110058HA	Rear	2020-2025 Ford Bronco Sport Hub Assembly	1,053,353
370036HA	Rear	2021-2025 Kia Sportage Hub Assembly AWD	887,404
110062HA	Front	2020-2025 Ford Explorer Hub Assembly RWD	814,812
110063HA	Rear	2020-2025 Ford Escape Hub Assembly FWD	761,622
108005HA	Rear	2021-2025 Cadillac Escalade ESV Hub Assembly	544,591
121004HA	Rear	2021-2024 Jeep Grand Cherokee Hub Assembly	450,181
690058HA	Front	2022-2024 Toyota Tundra Hub Assembly	391,936
105001HA	Front	2020-2025 Ford Transit-150 Hub Assembly RWD with Heavy Duty Front Axle	448,234

Bulletin No. WHA032026



# New Product Announcement

GSP No.	Position	Application	VIO
100027HA	Both	2019-2025 Buick Envision Hub Assembly	296,744
530055HA	Front	2016-2024 Nissan Armada Hub Assembly RWD	293,861
110061HA	Front	2018 Ford Transit-350 HD Hub Assembly with Dual Rear Wheels	252,408
105002HA	Front	2020-2025 Chevrolet Silverado 3500 HD Hub Assembly with DRW	252,000
120026HA	Front	2000-2002 Dodge Ram 2500 Hub Assembly RWD Except 11,000 (lb) GVW	246,292
110068B	Rear	2009-2011 Ford Focus Wheel Bearing	241,534
690056HA	Front	2022-2025 Lexus LX600 Hub Assembly	221,544
270040HA	Front	2010-2012 BMW 750i xDrive Hub Assembly with Hardware	206,267
110057HA	Rear	2018-2020 Ford EcoSport Hub Assembly FWD	197,954
370038B	Rear	2003-2009 Kia Sorento Wheel Bearing	183,269
530057HA	Rear	2000-2006 Nissan Sentra Hub Assembly 4-Wheel ABS	175,310
510011B	Rear	2014-2024 Mitsubishi Mirage G4 Wheel Bearing	154,286
270039HA	Both	2014-2021 BMW i3 Hub Assembly	146,390
730007HA	Both	2007-2018 Volvo S60 Hub Assembly FWD with Hardware	144,965
110059HA	Rear	2019-2023 Ford Transit Connect Hub Assembly	141,618
530054HA	Rear	2021-2024 Nissan Kicks Hub Assembly From 12/2020	133,277
115002HA	Front	2021-2025 Ford Mustang Hub Assembly From 03/01/2021	122,419
470025HA	Rear	2016-2021 Mazda CX-9 Hub Assembly FWD	114,483
691253HA	Rear	2022-2025 Lexus NX350 Hub Assembly	112,880
530056HA	Rear	2003-2007 Nissan Murano Hub Assembly FWD	105,705
370038HA	Rear	2021-2025 Kia Niro Hub Assembly	103,387
682001B	Rear	1998-2005 Suzuki Grand Vitara Wheel Bearing	101,477
370022B	Front	2020-2024 Hyundai Venue Wheel Bearing	96,766
690054HA	Rear	2023-2024 Toyota Corolla Hub Assembly	90,352
110064HA	Rear	2017-2020 Lincoln MKZ Hub Assembly	88,358
120027HA	Front	2022-2025 Jeep Grand Wagoneer L Hub Assembly	86,581
120028HA	Rear	2022-2025 Jeep Grand Wagoneer L Hub Assembly	86,581
691254HA	Rear	2021-2024 Toyota RAV4 Prime Hub Assembly	77,049
691255HA	Front	2021-2024 Toyota RAV4 Prime Hub Assembly	77,049

# New Product Announcement

GSP No.	Position	Application	VIO
361004HA	Both	2023-2025 Honda Pilot Hub Assembly	73,692
691256HA	Rear	2021-2025 Lexus IS300 Hub Assembly	65,205
691252HA	Front	2008-2017 Lexus LS460 Hub Assembly AWD	56,669
110070WH	Front	1991-1995 Ford Taurus Wheel Hub Repair Kit	50,206
110060HA	Front	2017-2018 Ford F-150 Raptor Hub Assembly To 04/24/2018	45,167
360042WH	Front	1986-1987 Honda Accord Wheel Hub	34,286
480027HA	Rear	2022-2025 Mercedes-Benz EQS 450+ Hub Assembly	32,225
270038HA	Front	2014 BMW X5 Hub Assembly	29,828
370037HA	Front	2015-2015 Hyundai Genesis Hub Assembly AWD To 11/14/2014	26,883
110069B	Front	1994-2003 Saab 900 Wheel Bearing with ABS Ring	23,638
270036HA	Front	2015-2017 BMW M3 Hub Assembly	14,710
690059HA	Front	2015-2023 Lexus RC F Hub Assembly To 01/2023	10,160
120029HA	Both	1992-1996 Eagle Summit Hub Assembly	8,206
108003HA	Front	2009-2013 Cadillac XLR Hub Assembly	4,521