

CAL FIRE NEWS RELEASE

California Department of Forestry and Fire Protection



CONTACT: Incident Information Line:
530-303-2455
Media Line
530-497-0315

RELEASE DATE: August 30, 2021
10:00 a.m.

WHAT: Update to Evacuation Orders

WHEN: **Effective Immediately**

WHERE: **El Dorado County**

Evacuation Order:

El Dorado County

Tahoe Keys

- All residences with the Tahoe Keys community and all residents accessed from the streets connected to Tahoe Keys Blvd, staying east of 3rd Street.

Tahoe Island

- East of Highway 50/ Highway 89 at the at the Lake Tahoe Blvd and Highway 89 Highway 50 intersection. This includes the area of Barton Hospital and the area of Winnemucca to the "Y". Also north of Highway 50 west of Tahoe Keys Blvd following along the north side of Highway 89 through the end of town prior to Pope Beach.

Al Tahoe

- All residences off of Lakeview which is west of Highway 50 North of Blue Lakes Road and east of Tahoe Keys Neighborhood.

Sierra Tract

- All residences on both sides of Highway 50 for the streets connected to O'Malley, Lodi, Silver Dollar and Rubicon Trail.

Bijou

- The residences between Al Tahoe on the east side of Johnson Blvd to include the streets of Treehaven and Fremont and extending to the east in to all residences west of Ski Run and east of Pioneer Trail.

Evacuation Routes:

- Evacuate Eastbound on Highway 50 towards Nevada.

Evacuation Shelters:

- Truckee Veterans Hall 10214 High Street, Truckee, CA 96161
- Douglas County Community Center, 1329 Waterloo Lane, Gardnerville, NV

NOTES:

Please go to: www.tinyurl.com/EDSOEVAC for an online evacuation map.

All previous evacuation orders and warnings remain in effect.

A mandatory **evacuation order** is defined as an immediate threat to life. This is a lawful order to leave now. The area is lawfully closed to public access.

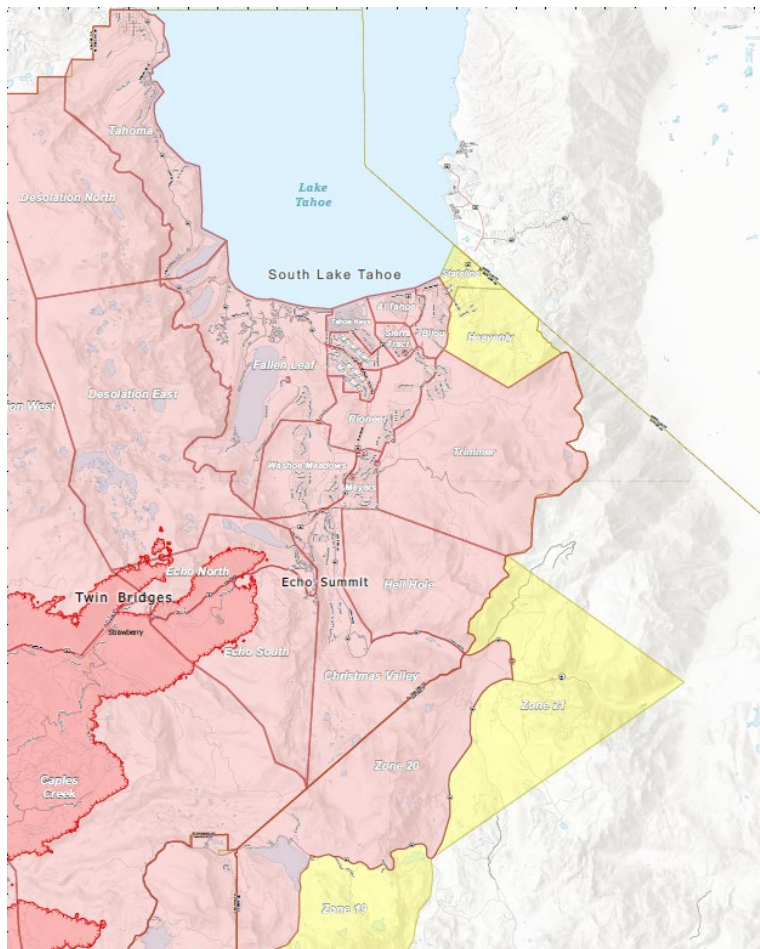
An **evacuation warning** is defined as a potential threat to life and/or property. Those who require additional time to evacuate and those with pets and livestock should leave now.



For additional information, scan the QR code above or visit <https://linktr.ee/imt6>

Safety Message:

The public is reminded to stay vigilant on current fire conditions. Please continue to adhere to road closures and any evacuation orders and warnings. A reminder to drive slowly and yield to emergency personnel in the area. There will be smoke in the respective areas as firefighters continue firefighting operations. If at any time you feel unsafe, please call 911.



www.readyforwildfire.org

###