



Impact of COVID-19 on food insecurity

38%
more Greenville
County residents are
food insecure

~1 in 5
children are
food insecure

\$355,000 in food

food pantries, backpack programs, meal sites,
food boxes, holiday meals, grocery gift cards



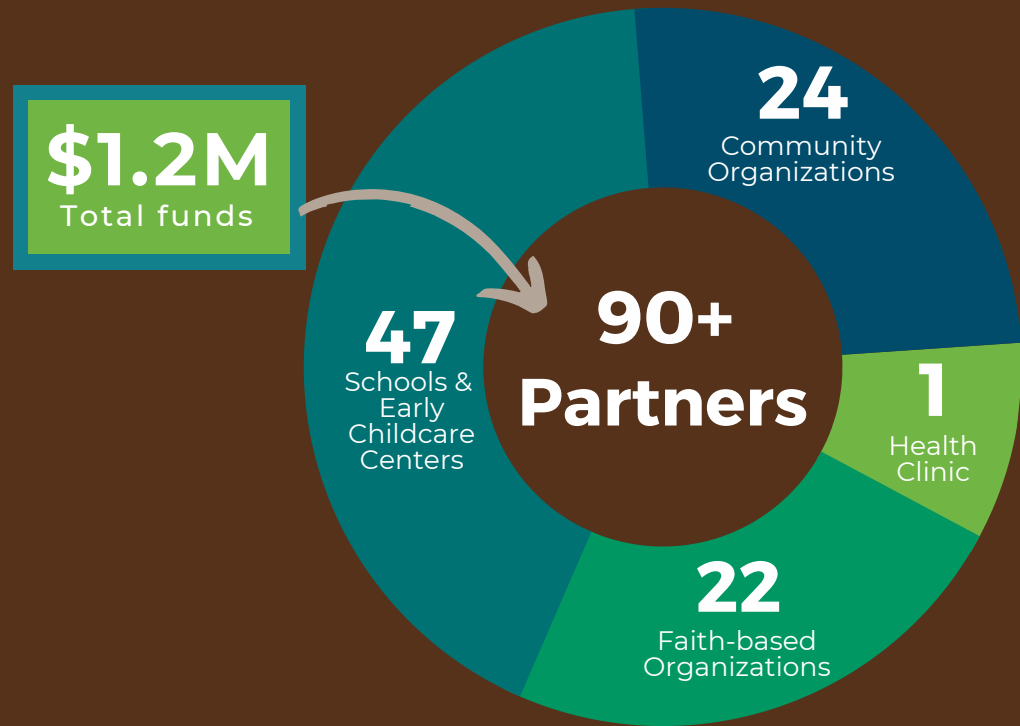
6,091 grocery gift cards

to support students at 36 GCS
schools over winter break



80,000+
residents impacted

In 2020, LiveWell Greenville convened Food Security Coalition partners to collectively advocate for County CARES funding to increase emergency food system capacity in the wake of growing need due to COVID-19:



**22 cold storage units
& 2 generators**



**4 refrigerated
vehicles**



**community farm
equipment**



**kitchen & pantry
equipment**

