



*We invite you to join us as we learn more about Living with Hearing Loss
Helpful Tips and How-To for the Hearing Challenged and Their Families & Friends*

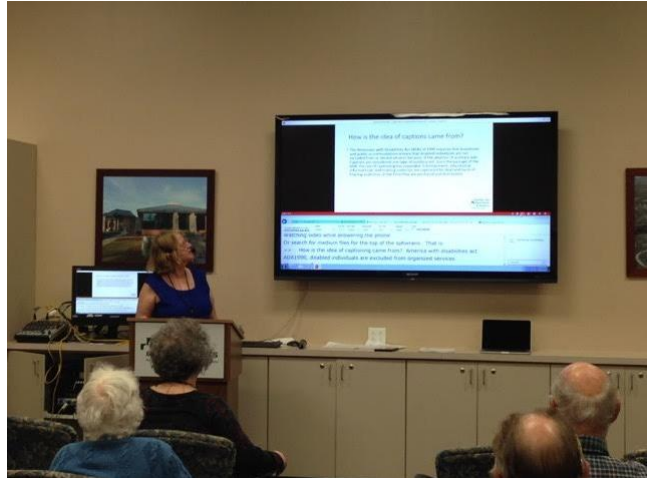
The Year in Review

**Reviewing Past Programs
As We Plan for the Future**

Facilitated by

Ethel Meadows

*Deputy President, HLAA
Asheville Chapter*



Please Bring Your Ideas

Date: Saturday, December 17, 2016 10:30 am

**Location: Seymour Auditorium, Care Partners Campus
Top of the Hill, (Building 22, at the Covered Walkway)**

68 Sweeten Creek Road, Asheville

Ample Parking is Available

Our Mission:

- 1) Self-Help for people with Hearing Loss...**
- 2) Access to Information...**
- 3) Building Community Solutions**



On the Web at: www.ncheatingloss.org/asheville.htm

For more information, please call: Ann Karson, 828-665-8699

Or email – Akarson57@gmail.com

HLAA is a 501 (c) (3) organization