

SC150 vertical spray coater

Double side manual spray coater for solder mask



Max. panel size 24" x 42"

max. panel thickness 8 mm (0.320")

ink free holes

Machine footprint: L= 3050mm (120.1") x W= 1000mm (39.4") x H = 2164mm (85.2")

Solder mask process

SC150 xxl manual spray coating system

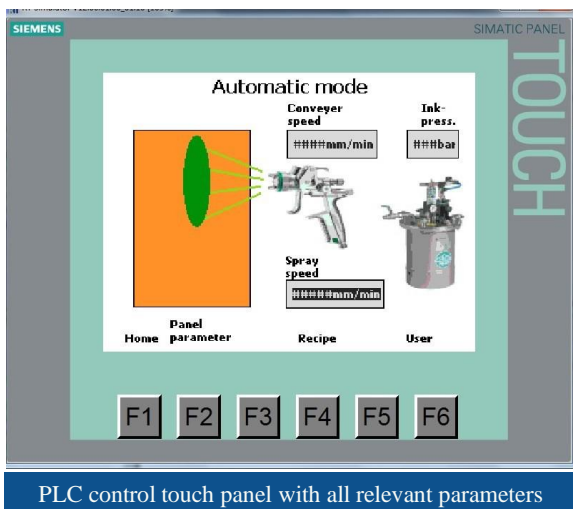
Low pressure—high volume



The panels are loaded by the operator with the aid of a transport clamp. The transport system then transfers the board into the spray chamber. The automatic door closes and the spray gun starts to coat the panel from one side to the other side by moving the spray gun up and down. The panel is moved along the spray gun with a pre-set speed from about 20"/Min (500mm/Min). After the first side is fully coated, the panel will be turned around and the second side will be coated. After the coating cycle is completed the automatic door opens and the panel comes out of the coating chamber. The operator then can pick up the panel with the clamp handle and put the panel into a special rack ready for the drying oven.



Full stainless steel design with quick exchange cleaning panels



Control System

Siemens PLC S7/1200 with Simatic touch screen control panel. Easy to program and store all necessary production parameters. In manual mode each single movement can be performed for maintenance and control reasons. Alarms with alarm description will be given in the case of a malfunction.

TECHNICAL DATA

COMPRESSED AIR:
ELECTRICITY:

90 PSI — 6 BAR
AC 400 V 3 PHASE, 50 Hz 5 KVA
AC 480 V 3 PHASE, 60 Hz 5 KVA (USA)

World wide installations of



Machines



ITC Intercircuit GmbH - Wasserburger Landstrasse 280 81827 München Germany
Phone (+49) 89 453604-0 Fax: (+49) 89 453604-20 www.itc-intercircuit.de

ITC Intercircuit N.A. - 21625 Grenada Avenue - Lakeville, Minnesota 55044
Phone: 952-469-2310 Fax: 952-469-2007 www.itcintercircuit.com