

© 2024 Mason Armstrong

PALM / PASSION SUNDAY

**FIRST PRESBYTERIAN CHURCH
DURHAM, NORTH CAROLINA**

MARCH 24, 2024

**FIRST PRESBYTERIAN CHURCH
DURHAM, NORTH CAROLINA**

Palm/Passion Sunday

March 24, 2024

A SERVICE FOR THE WORSHIP OF GOD

(As we prepare to worship, please silence all mobile devices.)

WELCOME, ANNOUNCEMENT, JOYS, AND CONCERNS

Mindy Douglas

PRELUDE (Handbell Choir)

All Glory, Laud, and Honor

Douglas Wagner

***CALL TO WORSHIP**

Esther Hethcox

Leader: Rejoice greatly, O daughter of Zion!

People: Shout aloud, O daughter of Jerusalem!

Leader: Lo, your king comes to you;

People: triumphant and victorious is he,

Leader: humble and riding on a donkey,

People: on a colt, the foal of a donkey.

All: Let us worship God.

***LESSON:** *Jesus Enters Jerusalem*

Mark 11:1-11

John Weicher

***PROCESSIONAL HYMN NO. 196**

All Glory, Laud, and Honor

Valet Will Ich Dir Geben

(Wave your palm branches and, if you desire, lay branch on the table.)

A TIME WITH THE CHILDREN

Lenore Champion

LESSON: *The Anointing at Bethany*

Mark 14:3-9

David Smith

***HYMN NO. 704** (verses 1-2)

To My Precious Lord

To My Precious Lord

DEDICATION OF OFFERINGS

Invitation to Give

Mindy Douglas

Offertory Anthem

O Love That Will Not Let Me Go

Elaine Hagenberg

Gordon Campbell, piano

O love that will not let me go; I rest my weary soul in Thee.

I give Thee back the life I owe, that in Thy ocean depths its flow may richer, fuller be.

O joy that seeks me through the pain, I cannot close my heart to thee;

I trace the rainbow through the rain, and feel the promise is not vain,

That morn should tearless be.

O love that will not let me go.

The ***Hunger for Change Offering*** will be received following the anthem.

Offertory Prayer

*Please rise in body or in spirit.

LESSON: <i>Judas Agrees to Betray Jesus</i>	Mark 14:10-11	Esther Hethcox
*HYMN NO. 783	<i>When We Are Tested</i>	<i>Angels of Healing</i>
LESSON: <i>The Passover Meal</i>	Mark 14:12-21	Julio Manceras
PRAYER OF CONFESSION		John Weicher
Leader:	Like Judas, we too are guilty of betrayal.	
People:	Is it I, Lord?	
Leader:	Like the disciples, we often listen to Jesus' words but don't really hear what he is saying.	
People:	Is it I, Lord?	
Leader:	Like the disciples, we follow him, but sometimes at a distance.	
People:	Is it I, Lord?	
Leader:	Like the disciples, we have heard the Good News; yet we hide in fear of what it will cost us to tell God's story.	
People:	Is it I, Lord?	
Silent Confession		
All:	Jesus Christ, Lord and Savior, we have failed you. We are sorry. Forgive our faithlessness, our self-protection, and our laziness. Give us strength to follow you with boldness. Fill us with your Spirit that we may be disciples who follow you in true devotion. Amen.	
Instrumental Kyrie (Handbell Choir)		Cathy Moglebust
(Lord, have mercy; Christ, have mercy; Lord, have mercy.)		
Assurance of Pardon		
LESSON: <i>Institution of the Lord's Supper</i>	Mark 14:22-25	Susan Dunlap
*HYMN NO. 206 (verses 1, 3, 5)	<i>This Is the Night</i>	<i>My Neighbor</i>
LESSONS:		
<i>Peter's Denial Foretold</i>	Mark 14:26-31	Lenore Champion
<i>Jesus Prays in Gethsemane</i>	Mark 14:32-42	David Smith
HYMN NO. 220 (verse 1)	<i>Go to Dark Gethsemane</i>	<i>Redhead 76</i>
LESSON: <i>Jesus' Arrest and Betrayal</i>	Mark 14:43-50	Julio Manceras
ANTHEM	<i>Purge Me, O Lord</i>	<i>Thomas Tallis</i>
<i>Purge me, O Lord, from all my sin, and save thou me by faith from ill, that I may rest and dwell with thee, upon thy holy blessed hill. And that done, grant that with true heart I may without hypocrisy affirm the truth, detract no one but do all things with equity.</i>		
LESSON: <i>Jesus Before the Council</i>	Mark 14:53-65	Lenore Champion

HYMN NO. 220 (verse 2)	<i>Go to Dark Gethsemane</i>	<i>Redhead 76</i>
LESSON: <i>Peter Denies Jesus</i>	Mark 14:66-72	Susan Dunlap
HYMN NO. 218 (verses 1, 2)	<i>Ah, Holy Jesus</i>	<i>Herzliebster Jesu</i>
LESSONS:		
<i>Jesus Before Pilate</i>	Mark 15:1-5, 15	Mindy Douglas
<i>The Soldiers Mock Jesus</i>	Mark 15:16-20	Esther Hethcox
<i>The Crucifixion of Jesus</i>	Mark 15:21-32	John Weicher
<i>The Death of Jesus</i>	Mark 15:33-39	Susan Dunlap
HYMN NO. 220 (verse 3)	<i>Go to Dark Gethsemane</i>	<i>Redhead 76</i>
LESSON: <i>The Burial of Jesus</i>	Mark 15:40-47	Mindy Douglas
SILENCE		
SOLO	<i>Crucifixion</i> (from “ <i>Hermit Songs</i> ”) Lesley Curtis, soprano	Samuel Barber
<i>At the cry of the first bird</i> <i>They began to crucify Thee, O Swan!</i> <i>Never shall lament cease because of that.</i> <i>It was like the parting of day from night.</i> <i>Ah, sore was the suffering borne</i> <i>By the body of Mary’s Son,</i> <i>But sorer still to Him was the grief</i> <i>Which for His sake</i> <i>Came upon His Mother.</i>		
*CLOSING PRAYER		Esther Hethcox
Leader: And here we are, saying “if only,” murmuring “Surely not,” counting the cost for once of our carelessness, and our lovelessness, and our sin. Trying so vainly to gain all, we’ve bartered you away in the transaction. We have lost the one who found us. People: With the Peters and Marys of all time, we wait, for only you can tell whether we are worth rising for. Amen.		
*HYMN NO. 221	<i>O Sacred Head, Now Wounded</i>	<i>Passion Chorale</i>
*CHARGE AND BENEDICTION		Mindy Douglas

Durham’s 50th Annual CROP Hunger Walk is later today.

Walkers will step off at 2:30 p.m. from Duke Chapel. FPC’s team will meet in front of Duke Chapel at 2:00 p.m. Sponsors, please get your donations to your walker today or later this week. Thanks for your support.



First Presbyterian Church welcomes all who worship with us. Let us know you have joined us for worship by scanning the QR code to the left. For online giving, scan the QR code to the right.

**Sign in****Donate online**

We honor and celebrate the human diversity and unity that God gives us in Jesus Christ. First Presbyterian welcomes individuals of every age, race, nationality, gender identity, ability, sexual orientation, and economic circumstance to participate fully in the life of the church. So that you may know who is sitting nearby, please sign the *Friendship Pad*, pass it along the pew, and **then return it to the starting point**, noting the names of those sitting near you.

Today’s *flowers* are given by **Gordon Campbell**, to the glory of God and in memory of **Dr. Walker H. Campbell**, Gordon’s uncle, and in memory of **Emily Steinhoff James**, member of our congregation who was killed last week.

Thanks to our handbell ringers today: **Kate Busa, Gordon Campbell, Brent Curtis, Floalice Reaves, Phyllis Supple, Tess Tessier, and Tim Turkington.**

The **Lenten Banner** was completed in 1990 and dedicated in 1991. It depicts traditional Lenten symbols. The banner was made possible by funds donated in memory of **Bess Bryant** and by the stitching of many devoted members of this congregation.

The **Pulpit Paraments**: In 2012 First Presbyterian Church commissioned Laurie Wohl to design and create paraments to be hung from the pulpit and lectern during Lent and Advent. Wohl is an internationally known fiber artist who exhibited her work at the church in spring of 2012. Her liturgical projects emphasize the “threads that bind” and the unity of the Old and New Testaments.

We are grateful that the bequest of **Anne ‘St. Clair’ Williams** made it possible to enhance our sanctuary with these beautiful works of art.

Hearing Assistance Receivers are available from the ushers. Before you leave the sanctuary, please turn off the receiver and place it in the specially marked receptacle by the door or return it to the audio/video console at the rear of the sanctuary. Receivers are sanitized after each use.

Childcare: A staffed nursery and children’s playroom are available on the second floor of the education building during worship. **Activity bags** are available in the foyer for children. Please return bags to the foyer at the end of worship.

Restroom locations: to the left and right as you exit the rear of the sanctuary; on the second floor of the education building; and on the first and second floors of the church house. There is an infant changing table in the restroom area located to the left as you exit the rear of the sanctuary.

Liturgy sources: The *Prayer of Confession* is written by Constance M. Cherry, © 2018. Used by permission. Other sources are *Book of Common Worship* (2018), *Stages on the Way*, and *Glory to God (The Presbyterian Hymnal)*. Music is reprinted under Onelicense.net A.713926.

The **bulletin cover** is created by FPC youth, **Mason Armstrong**, for Palm Sunday.

Last Call: Easter Lilies will grace our sanctuary again this year on Easter Sunday. If you would like to honor or remember someone in the bulletin on next Sunday, today is the last day to do so. Fill out a donor card (available in the foyer) and return it to the Church office with your donation. You can also return the card via the offering plate and donate by scanning the QR code.

Holocaust Exhibit: FPC is hosting the “*Some Were Neighbors*” exhibit from the U.S. Holocaust Memorial Museum through March 27 in Watts-Hill Hall. The exhibit is open Monday - Friday between 1:00-5:00 p.m., and on Sundays between 9:00 a.m.-1:00 p.m. when Watts-Hill Hall is not in use.

These Days daily devotional books for April, May, June 2024 have arrived. Copies are free and can be picked up from the tables in the foyer and narthex, while supplies last.

Childcare is now available at 9:45 a.m. on Sunday mornings.

If you know of/or are a family with children younger than preschool age who need care during the faith formation hour, we are now providing childcare during that time frame! Inquire at the nursery room, second floor of the education building.

~ Concerns ~

Heartfelt sympathies are extended to **Chris James** and son **Miles** on the death of Chris’ wife / Miles’ mother and FPC member, **Emily Steinhoff James**. Emily died March 17th when shot by her sister’s former partner in a custody dispute. If you want to support Chris and Miles with meals, use this meal train link: <https://takethemameal.com/meals.php?t=OVJA9543>.

We also extend sympathies to the family of **Jim Seitzer**, FPC member who died March 20th at the age of 99. A Service of Witness to the Resurrection to be held at a date/time to be announced.



Harvey Estes has returned to his apartment (home with Jean) at Croasdaile Village.

Michele Miller-Cox, First Presbyterian’s Day School director, is recovering from back surgery.

Jasper Gunn, child of Wilson Gunn, is recovering from surgery.

Tony Chavez	Paul Cornsweet	Susan Cyr	Kerry Holbrook	Lee House
Jenni James	Jancy Johnstone	Mal King	Mitzi Leshner-Thomas	Franzi Rokoske
Alfred Tisdale				

Concerns continue on to the next page.

Care Communities

Croasdaile Pavilion: *Dub Gulley*

Durham Ridge: *Phillip Herndon*

Hillcrest Convalescent: *Julian Boswell, Maxie Honeycutt, Carol Wills, Jim Wolfe*

Family and Friends of the Congregation

Jennie Bodkin, sister of Mindy Douglas

Paul Dunlap, brother of Susan Dunlap

Andrew Holbrook, nephew of Kerry Holbrook

John Keller, son of Tom & Margaret Keller

Alan Petersburg, brother-in-law of Jenni James

Joe Robinson, former member of FPC

Jim Vacca, father of Jamie Chambliss

Denisha Williams, daughter of Sybil King

Emily Wilson, wife of Mike Wilson and daughter-in-law of Jean and Chuck Wilson

Kim Cummings, father of Drew Cummings

Troy Evans, nephew of Vernon & Beth Neece

Ford Holbrook, brother Kerry Holbrook

Gabe Lamazares, assoc. rector, St. Philip's EC

Doug Rimmer, brother of Steve Rimmer

Calvin Rogers, friend of Steve Rimmer

John C. Weicher, father of John Weicher



~ Maundy Thursday - March 28 ~

Evening Worship at 7:00 p.m. in the FPC Sanctuary

A worship service with communion to commemorate Jesus' last supper. This service will include stripping of the chancel.

~ Good Friday - March 29 ~

Stations of the Cross at 12 Noon around Downtown Durham

A spiritual pilgrimage of the Holy Week texts in Durham's downtown context, beginning at St. Philip's Episcopal Church and ending in FPC's sanctuary.

Service of Tenebrae at 7:00 p.m. in the FPC Sanctuary

An ancient service that makes use of gradually diminishing light through the extinguishing of candles. This increasing darkness symbolizes the approaching darkness of Jesus' death and of hopelessness in the world without God.

~ Easter Sunday - March 31 ~

10:00 a.m. Fellowship Hour with Refreshments (Watts-Hill Hall)

11:00 a.m. Worship with Communion in the FPC sanctuary (Mindy Douglas, preaching)

The *One Great Hour of Sharing Offering* (see insert in today's bulletin) will be received to provide relief to the hungry, poor, oppressed, and those affected by natural disasters. A specially-marked envelope will be provided in the bulletin for this offering on Easter Sunday.



THE HUNGER FOR CHANGE OFFERING

First Presbyterian Church of Durham has a long history of involvement in hunger-related mission, most notably Pennies for Hunger (now Hunger for Change) and the Durham CROP Walk. In addition, we coordinate volunteers for the Community Café at Urban Ministries of Durham, collect and bag food for the Iglesia Food Pantry, and the Food Bank of Central and Eastern NC. We also encourage giving to the One Great Hour of Sharing Offering on Easter Sunday which funds mission activities related to disaster assistance and hunger programs locally and around the world.

The funds received from our Hunger for Change Offering go to the New Hope Presbytery for the Presbyterian Hunger Relief Program and are divided as follows:

- 50% - International Hunger Relief Programs
- 40% - Local Hunger Programs
- 10% - Administration.

These funds are dispersed through local grants to hunger relief programs based on a grant application process. Urban Ministries of Durham, Presbyterian Urban Ministries and Iglesia Emanuel have been frequent recipients.

The fourth Sunday of each month is designated to receive the Hunger for Change Offering. Please consider supporting this hunger relief effort with a generous offering each month.

Thank you for your offering today!

All Glory, Laud, and Honor 196

Refrain

All glo - ry, laud, and hon - or to thee, Re-deem-er, King,

to whom the lips of chil - dren made sweet ho-san-nas ring!

1 Thou art the King of Is - ra - el, thou Da - vid's roy - al Son,
2 The peo - ple of the He - brews with palms be - fore thee went;
3 To thee, be - fore thy pas - sion, they sang their hymns of praise;
4 Thou didst ac - cept their prais - es; ac - cept the prayers we bring,

who in the Lord's name com - est, the King and bless - ed One.
our praise and prayers and an - thems be - fore thee we pre - sent.
to thee, now high ex - alt - ed, our mel - o - dy we raise.
who in all good de - light - est, thou good and gra-cious King!

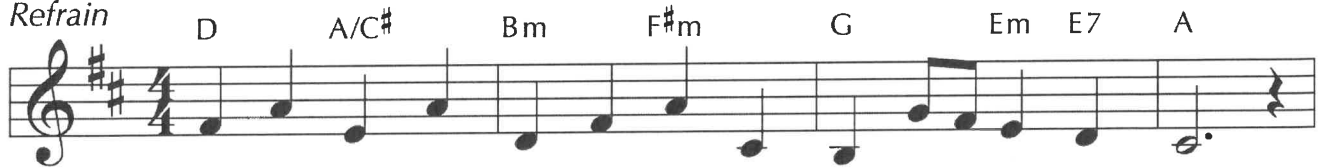
to Refrain

To My Precious Lord

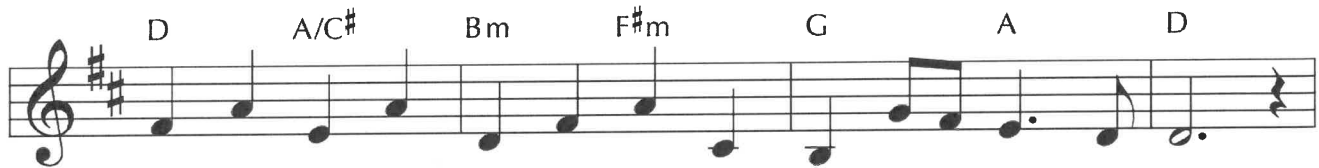
704

내게 있는 향유 옥합

Refrain

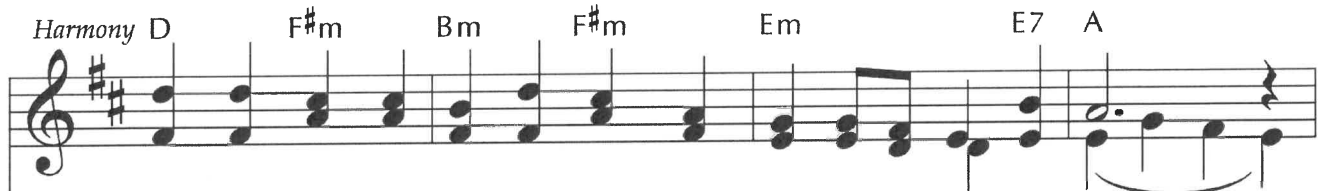


To my pre-cious Lord I bring my flask of fra-grant oil;
내 게 있 는 향 유 옥 합 주 께 가 저 와

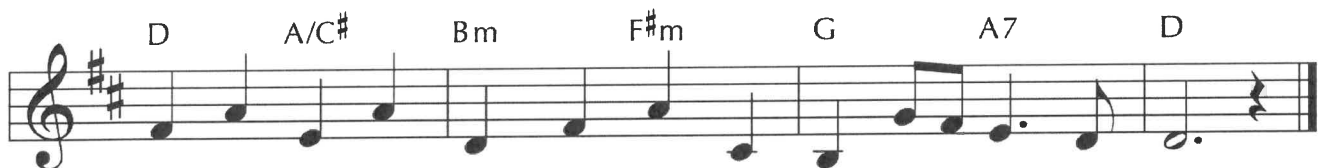
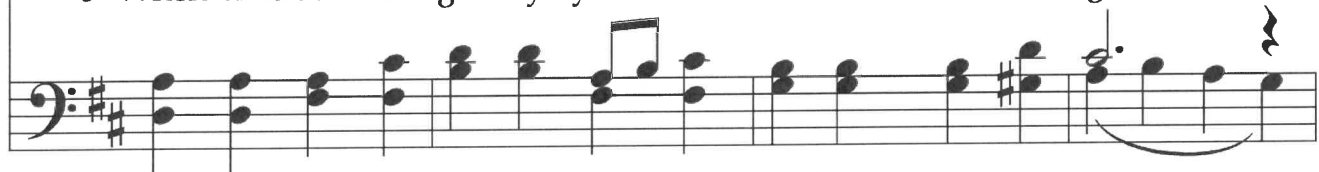


kneel-ing down, I kiss his feet, a - noint them with the oil.
그 발 위 에 입 맞 추 고 깨 뜨 립 니 다

Harmony



1 Je - sus, who for my sake walked the road to Cal - va - ry,
2 Je - sus, who for my sake had his feet nailed to the cross,
3 When in clouds of glo - ry you come back to earth a - gain,



with each step has marked the im - print of his love for me.
with his blood has washed and healed me, paid the heav - y cost.
Je - sus, with your love, em-brace and claim me as your friend.

When We Are Tested

783

Capo 2: (Dm)

(Am)

(Dm)

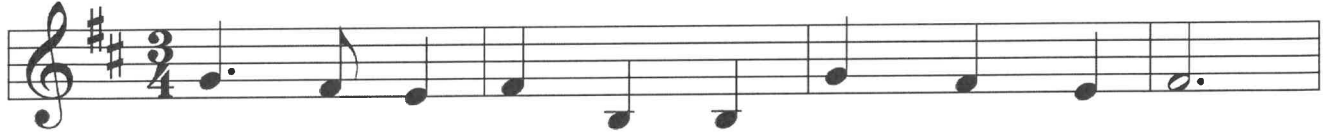
(Am)

Em

Bm

Em

Bm



1 When we are test - ed and wres - tle a - lone,
2 When in the des - ert we cry for re - lief,
3 When we are tempt - ed to bar - ter our souls,
4 When we have strug - gled and searched through the night,

(Em)

(B7)

(Em)

(Dsus) (D)

F#m

C#7

F#m

Esus E



fam - ished for bread when the world of - fers stone,
plead - ing for paths marked by cer - tain be - lief,
trad - ing the truth for the power to con - trol,
sort - ing and sift - ing the wrong from the right,

(G)

(D)

(Em7)

(F)

A

E

F#m7

G



nour - ish us, God, by your word and your way,
lift us to love you be - yond sign and test,
teach us to wor - ship and praise on - ly you,
Sav - ior, sur - round us with cir - cles of care,

(Am6)

(C)

(Dm)

(Am) (E)

Bm6

D

Em

Bm F#



food that sus - tains us by night and by day.
trust - ing your pres - ence, our on - ly true rest.
seek - ing your will in the work that we do.
an - gels of heal - ing, of hope, and of prayer.

This Is the Night

Capo 1: (Em)

(D)

(Em)

(D)

Fm

E \flat

Fm

E \flat 

1 This is the night, dear friends, the night for weep - ing,
 2 This night the trai - tor, wolf with - in the sheep - fold,
 3 This night Christ in - sti - tutes his ho - ly sup - per,
 4 This night the Lord by slaves shall be ar - rest - ed,
 5 O make us shar - ers, Sav - ior, of your Pas - sion,

(Em)

(C)

(G)

(Am)

(C)

(Bsus) (B7)

Fm

D \flat A \flat B \flat mD \flat

Csus C7



when powers of dark - ness o - ver - come the day,
 be - trays him - self in - to his vic - tim's will,
 blest food and drink for heart and soul and mind;
 he who de - stroys our slav - er - y to sin;
 that we may share your glo - ry that shall be;

(G)

(Dsus)

(D)

(Am)

(Em) (Bm7)

A \flat E \flat susE \flat B \flat m

Fm

Cm7



the night the faith - ful mourn the weight of e - vil
 the Lamb of God for sac - ri - fice pre - par - ing:
 this night in - jus - tice joins its hand to trea - son's,
 ac - cused of crime, to crim - i - nals be giv - en,
 let us pass through these three dark nights of sor - row

(C)

(Am7)

(Em)

(Am7)

(Em)

(Bm7)

(Em)

D \flat B \flat m7

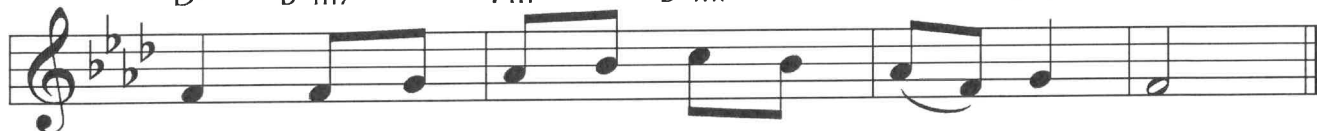
Fm

B \flat m7

Fm

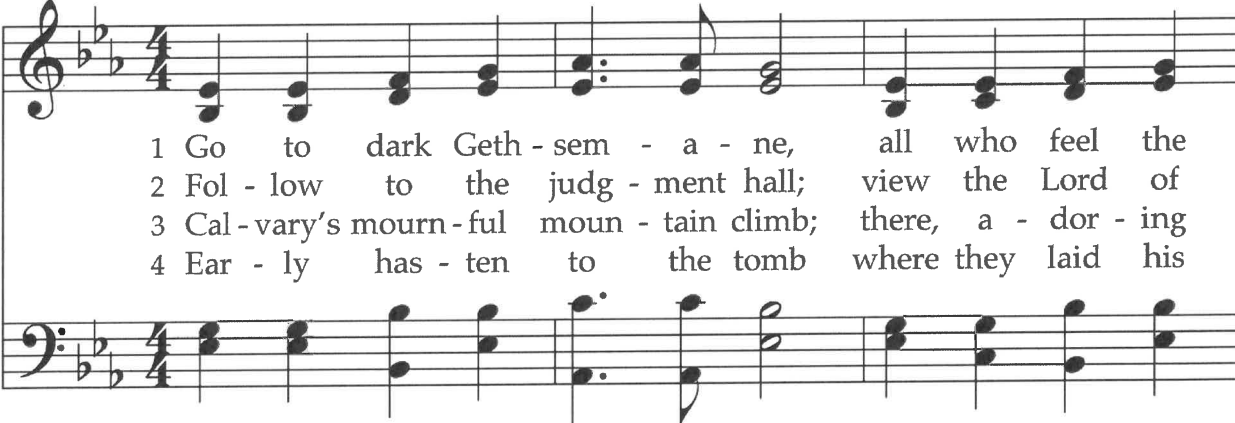
Cm7

Fm

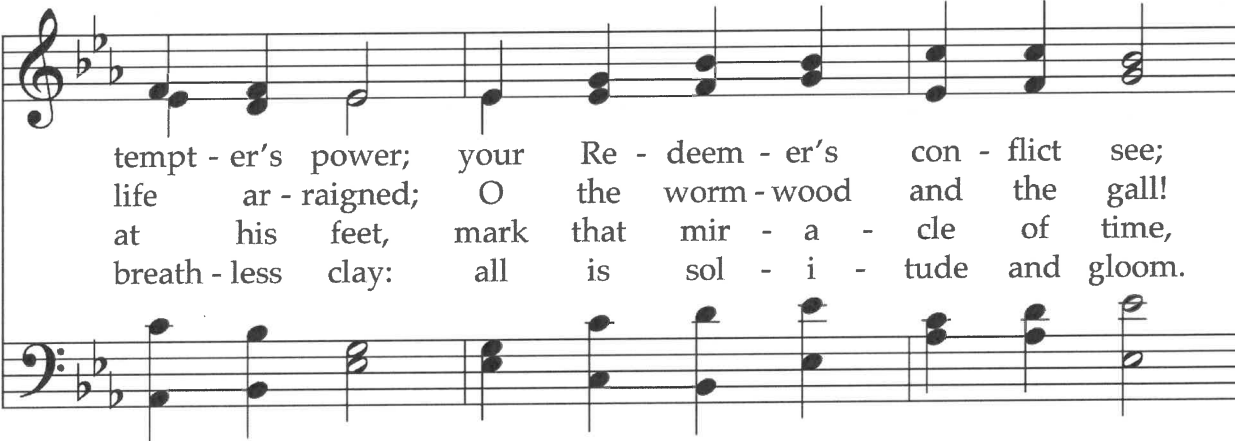


where - by our sins the Son of Man be - tray.
 sin brings a - bout the cure for sin's own ill.
 and buys the ran - som - price of hu - man - kind.
 that judg - ment on the righ - teous Judge be - gin.
 to Eas - ter's laugh - ter and its lib - er - ty.

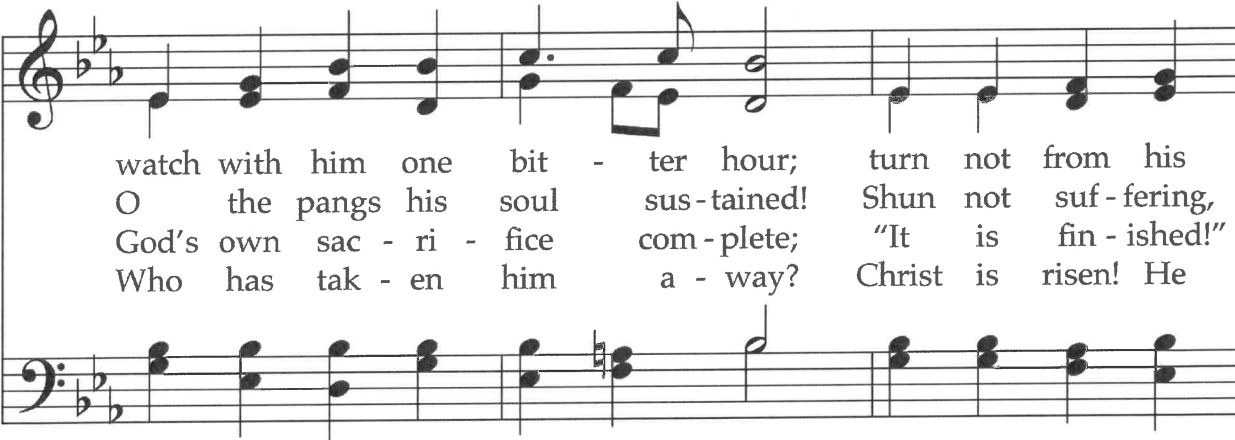
Go to Dark Gethsemane



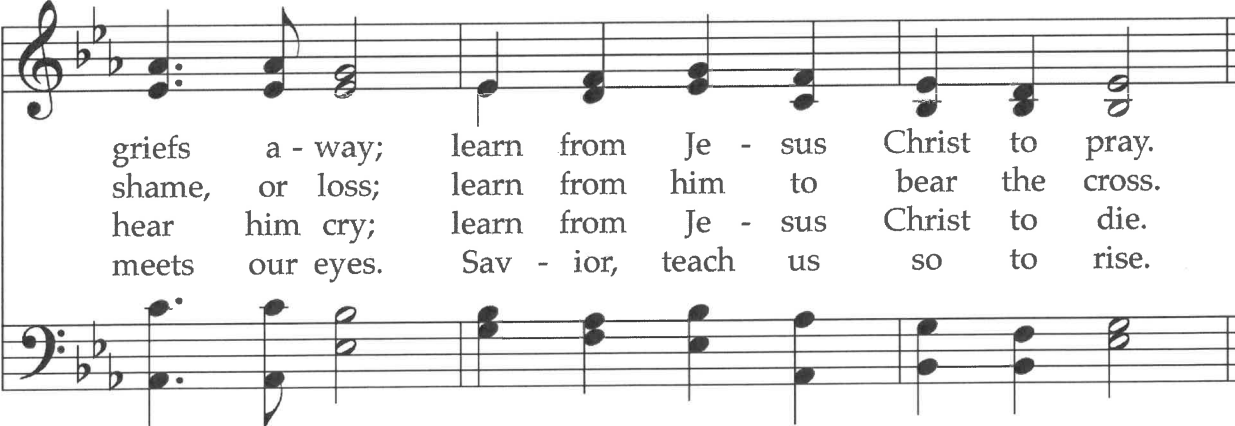
1 Go to dark Geth - sem - a - ne, all who feel the
 2 Fol - low to the judg - ment hall; view the Lord of
 3 Cal - vary's mourn - ful moun - tain climb; there, a - dor - ing
 4 Ear - ly has - ten to the tomb where they laid his



tempt - er's power; your Re - deem - er's con - flict see;
 life ar - raigned; O the worm - wood and the gall!
 at his feet, mark that mir - a - cle of time,
 breath - less clay: all is sol - i - tude and gloom.

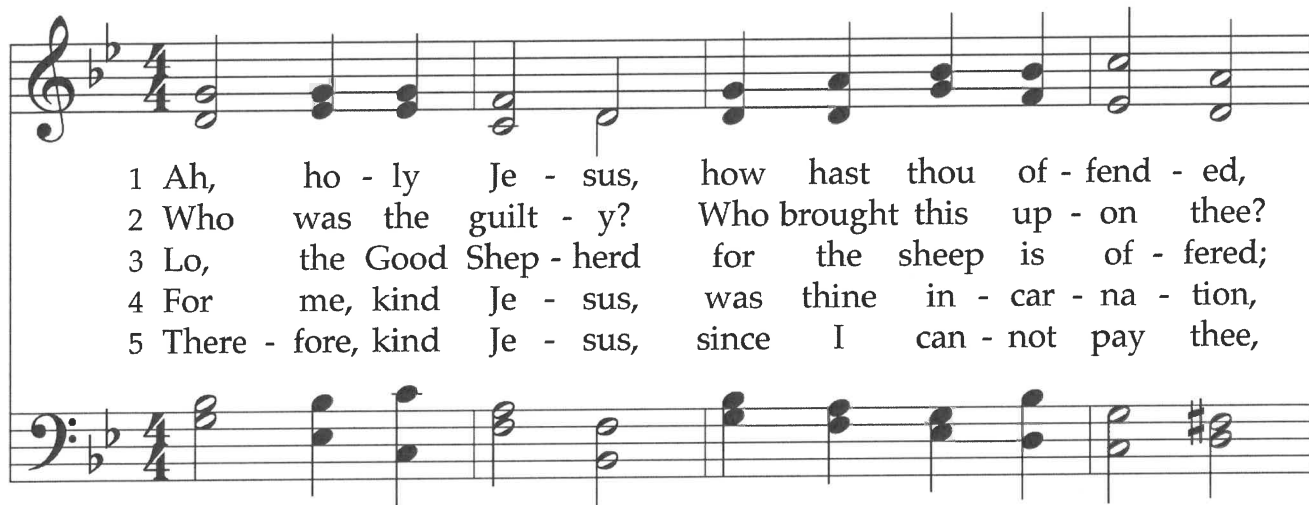


watch with him one bit - ter hour; turn not from his
 O the pangs his soul sus - tained! Shun not suf - fering,
 God's own sac - ri - fice com - plete; "It is fin - ished!"
 Who has tak - en him a - way? Christ is risen! He

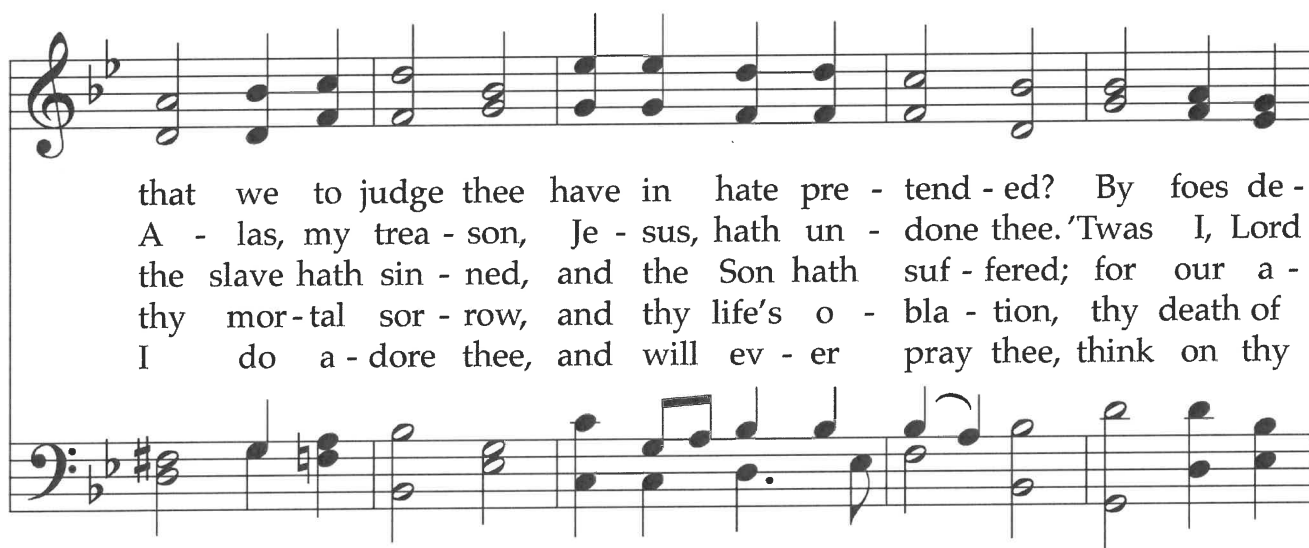


griefs a - way; learn from Je - sus Christ to pray.
 shame, or loss; learn from him to bear the cross.
 hear him cry; learn from Je - sus Christ to die.
 meets our eyes. Sav - ior, teach us so to rise.

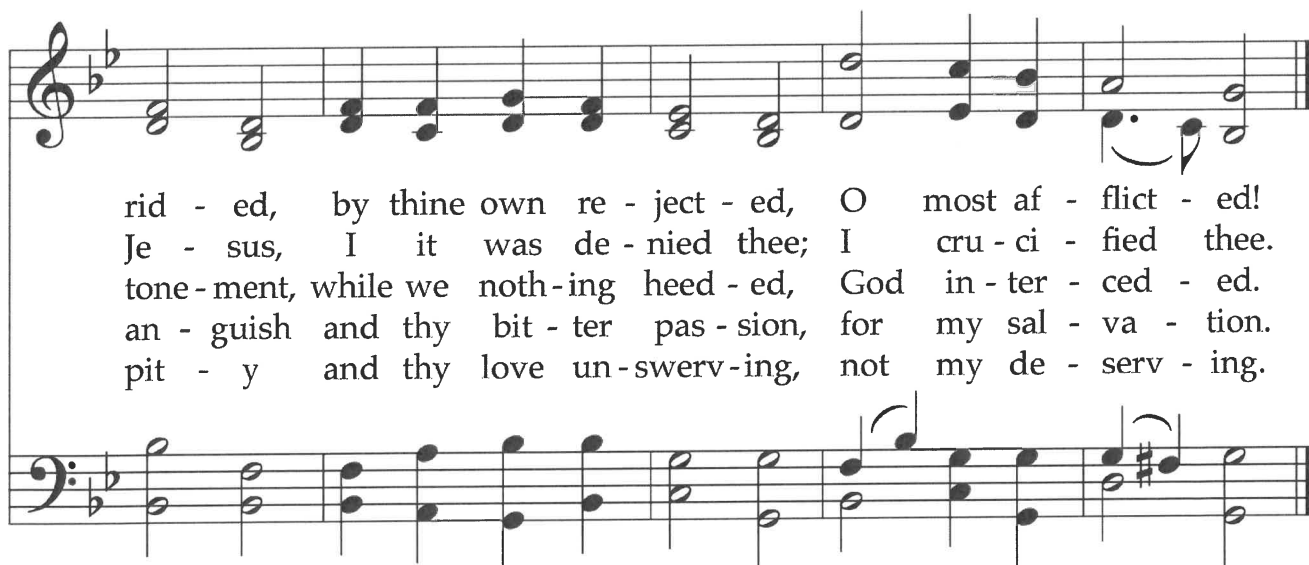
Ah, Holy Jesus



1 Ah, ho - ly Je - sus, how hast thou of - fend - ed,
 2 Who was the guilt - y? Who brought this up - on thee?
 3 Lo, the Good Shep - herd for the sheep is of - fered;
 4 For me, kind Je - sus, was thine in - car - na - tion,
 5 There - fore, kind Je - sus, since I can - not pay thee,



that we to judge thee have in hate pre - tend - ed? By foes de -
 A - las, my trea - son, Je - sus, hath un - done thee. 'Twas I, Lord
 the slave hath sin - ned, and the Son hath suf - fered; for our a -
 thy mor - tal sor - row, and thy life's o - bla - tion, thy death of
 I do a - dore thee, and will ev - er pray thee, think on thy

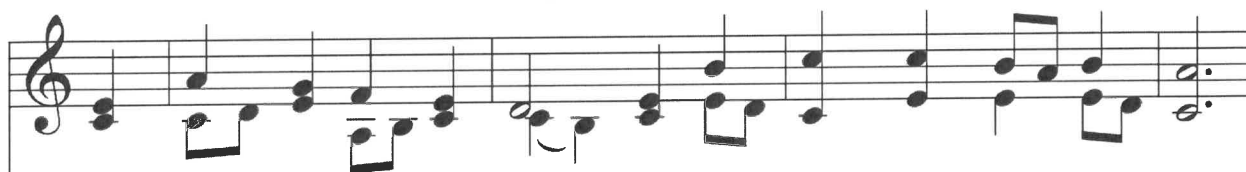


rid - ed, by thine own re - ject - ed, O most af - flict - ed!
 Je - sus, I it was de - nied thee; I cru - ci - fied thee.
 tone - ment, while we noth - ing heed - ed, God in - ter - ced - ed.
 an - guish and thy bit - ter pas - sion, for my sal - va - tion.
 pit - y and thy love un - swerv - ing, not my de - serv - ing.

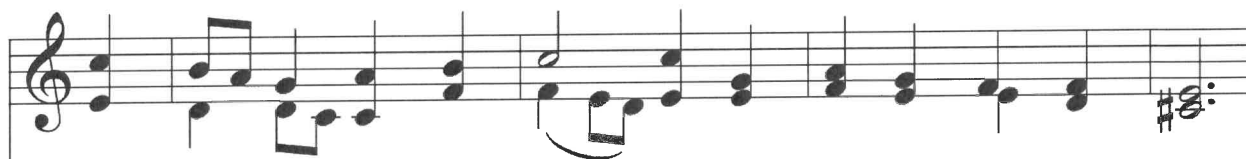
O Sacred Head, Now Wounded 221



1 O sa - cred head, now wound-ed, with grief and shame weighed down;
 2 What thou, my Lord, hast suf - fered was all for sin - ners' gain:
 3 What lan-guage shall I bor - row to thank thee, dear-est friend,



now scorn-ful - ly sur - round - ed with thorns, thine on - ly crown;
 mine, mine was the trans - gres - sion, but thine the dead-ly pain.
 for this thy dy - ing sor - row, thy pit - y with-out end?



O sa - cred head, what glo - ry, what bliss till now was thine!
 Lo, here I fall, my Sav - ior! 'Tis I de - serve thy place;
 O make me thine for - ev - er; and should I faint-ing be,



Yet, though de - spised and gor - y, I joy to call thee mine.
 look on me with thy fa - vor, and grant to me thy grace.
 Lord, let me nev - er, nev - er out - live my love to thee.



SCHEDULE FOR HOLY WEEK

Later Today

2:30 PM Durham's CROP Hunger Walk
(meet at 2:00 PM in front of Duke Chapel)

The MnMs Fellowship will not meet.

Monday, March 25

9:00 AM-12 Noon Walk-in Ministry Interviews

1:00-5:00 PM "Some Were Neighbors" Holocaust exhibit open for viewing (Watts-Hill Hall)

1:30 PM Worship Planning

5:00 PM Handbell Choir

6:00 PM Diaconate

7:00 PM Session

Tuesday, March 26

1:00-5:00 PM "Some Were Neighbors" Holocaust exhibit open for viewing (Watts-Hill Hall)

Wednesday, March 27

1:00 PM All Staff

1:00-5:00 PM "Some Were Neighbors" Holocaust exhibit open for viewing (Watts-Hill Hall)

7:00 PM Chancel Choir

Thursday, March 28



9:00 AM-12 Noon Walk-in Ministry Interviews

7:00 PM Worship with Communion and Stripping of the Chancel (sanctuary)

Friday, March 29



12 Noon Stations of the Cross Pilgrimage (begins at St. Philip's EC and ends in FPC sanctuary)

7:00 PM Tenebrae Service (sanctuary)

Saturday, March 30

Sunday, March 31



10:00 AM Fellowship Hour with Refreshments (Watts-Hill Hall)

No Adult faith formation classes.

No faith formation classes for children and youth.

11:00 AM Worship with Communion

The MnMs Fellowship will not meet.

For more information about First Presbyterian Church, email the church office:
info@firstpres-durham.org or visit our website: <https://firstpres-durham.org>.

CHURCH STAFF

Tom Bloom, Business Administrator
Lenore Champion, Children's Ministry Director
Vernon Cooper, Sexton
Mindy Douglas, Pastor/Head of Staff
Susan Dunlap, Parish Associate
Omar Guess, Sunday Morning Sexton
Joseph Harvard, Pastor Emeritus



Esther Hethcox, Associate Pastor
Sybil King, Administrative Assistant
Mitzi Leshner-Thomas, Associate Pastor (Medical Leave)
Valerie McMillian, Parish Administrator
Kathy Parkins, Minister of Music
John Weicher, Associate Pastor

305 EAST MAIN STREET DURHAM, NORTH CAROLINA 27701 919-682-5511 ORGANIZED 1871