

# Colaborativa La Milpa

*Mission:* Activate, build capacity, and support community-based organizations to ensure their impact and sustainability.

*Vision:* Healthy, united, and flourishing communities that honor origins, identities, and power.

**Colaborativa La Milpa** is a collective of grassroots organizations, based in the Emma community of Buncombe County, NC, that has come together to share resources in ways that will allow everyone to have greater impact and sustainability.

Over the past 20 years, primarily Latinx immigrant leaders in the Emma neighborhood have been organizing around mutual aid, community defense, and the uplift of our cultures. From these efforts a number of grassroots organizations emerged, including Nuestro Centro (now Raíces), CIMA, PODER Emma, Retoño Hñähñú, and Consulta Tu Compa.

After years of deep collaboration, in 2018 these organizations officially came together to implement a vision for greater cooperation and sustainability. Colaborativa La Milpa emerged as a collective response for building capacity around grant writing, administration, communications, nonprofit compliance, and coordinated strategic approaches.

Colaborativa La Milpa is creating a model for sharing infrastructure so more energy can go directly to our programs, and for coordinating efforts to avoid duplicating work. We also come together to break patterns of isolation that exist on individual and organizational levels. We practice building community, being in true solidarity, and being in collaboration rather than competition. We believe that working collectively expands our impact.

We affirm that each of our organizations is stronger when all of our organizations are thriving.

*Members of Colaborativa La Milpa:*

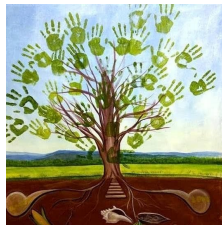
**Compañeros Inmigrantes de las Montañas en Acción (CIMA)** connects, strengthens, and organizes communities to take action for immigrants' rights in Western North Carolina. CIMA maintains a hotline, provides educational workshops, and coordinates rapid response organizing. Founded in 2002. [cimawnc.org](http://cimawnc.org)

**Raíces** leads cultural organizing that supports the process of inclusion and recognition of Latinx immigrant families in the Erwin School District. Their afterschool and summer camp use arts and culture to build confidence and pride, with parents and community members actively shaping and leading programming. Founded in 2007 as Nuestro Centro, the organization changed its name to Raíces in 2020. New website coming soon.

**PODER Emma Community Ownership** works to create a cooperative economy and prevent displacement of legacy residents in the Emma community. Our work is centered around the belief that communities have the wisdom and experience needed to create powerful collective solutions to address the structural barriers that we face, and that cooperative development is an important part of creating community power and equity. Founded in 2016. [poderemma.org](http://poderemma.org)

**Ra 'roho ra Hñähñu: Indigenous Language Revitalization Project** works to strengthen the connection to the indigenous Hñähñú culture and language so that it lives on in future generations. This program engages the many Emma residents who have roots in the Hñähñú community in Hidalgo, Mexico. Founded in 2018. Featured on episode 6 of Se Ve Se Escucha: [seveeseescucha.com/episodes](http://seveeseescucha.com/episodes)

**Consulta Tu Compa** provides bilingual resource and referral services for Latinx immigrant individuals and families who cannot access critical resources due to barriers including language and immigration status. A resource specialist provides assistance with issues such as school registration, health services, legal challenges, bureaucratic processes, and domestic violence. Founded in 2007, expanded in 2020 to respond to the Covid-19 crisis. [facebook.com/consultatucompa](https://facebook.com/consultatucompa)



Raíces

