

EXCELLENCE IN CONCRETE 2016 AWARDS



The Excellence in Concrete Awards are presented each year by the Concrete Promotional Group (CPG) to recognize outstanding work in concrete construction.

The 2016 Awards on November 10, 2016, at the College Basketball Experience in Sprint Center in Kansas City, MO, celebrated 20 winning projects and over 160 companies involved in those projects! Congratulations winners!

CPG Mission Statement:
The Concrete Promotional Group is a trade association to support the local construction community in the use of quality concrete construction means and methods. It provides education, reference material and sales/marketing support to the professional community.



The Judges Award Johnson County Gateway

Kansas Dept. of Transportation
Gateway Interchange Constructors
Fordyce Concrete Co., Inc.
HDR
HNTB

This \$288 million project is the first design-build project awarded by the Kansas Department of Transportation. It reconfigures the I-435/K-10/I-35 corridor, including 27 bridges, two diverging diamond interchanges, and over 600,000 sq. yds. of base and pavement. An estimated 320,000 vehicles will be passing through by 2040.



**Low Rise
Project Vortex
Olathe, KS**

Holder Construction Company
Lithko Contracting, LLC
Penny's Concrete Inc.
Corgan
L.A. Fuess Partners, Inc.



**Site Cast Tilt-Up
KCI Logistics Park Bldg #4
Kansas City, MO**

Trammel Crow Co.
Concrete Strategies
Quicksilver Readymix LLC
Kadean Construction Co.
Smith/Roberts Associates, Inc.



**Recreational Facility
West Platte Stadium
Weston, MO**

West Platte School District
Leavcon II
Geiger Ready-Mix Co., Inc.
J.E. Dunn Construction Co.
HTK Architects, PA.
Bob D. Campbell & Co.



**Monument
Reat Underwood Memorial
Overland Park, KS**

Blue Valley Middle School
Complete Pools
Century Concrete Co.
JR Concrete Construction



**Paving/DOT
Metropolitan Avenue
Leavenworth, KS**

Kansas Dept. of Transportation
Miles Excavating, Inc.
Forterra
Geiger Ready-Mix Co., Inc.
Lochner
The Fort Miller Co., Inc.



**Parking Garage
Garmin
Olathe, KS**

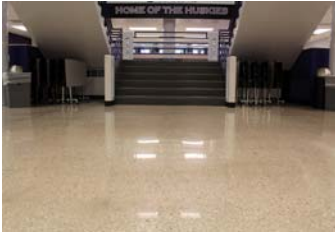
Garmin
John Rohrer Contracting Co.
Fordyce Concrete Co., Inc.
McCown Gordon Construction
Gould Evans
Bob D. Campbell & Co.



**Decorative Commercial
Edgewater at City Center
Lenexa, KS**

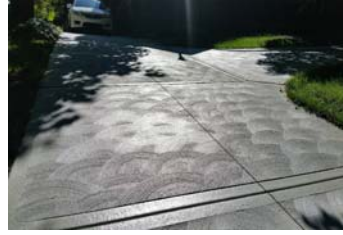
Block Real Estate Services
Bedrock Concrete
Geiger Ready-Mix Co., Inc.
Titan Construction
NSPJ Architects
Bob D. Campbell & Co.

CPG EXCELLENCE IN CONCRETE AWARDS 2016



Polished Concrete
Blue Valley Northwest
High School
Lenexa, KS

Blue Valley Northwest High School
 ACS Concrete Construction
 Kes Construction



Residential Flatwork
Sedlock Residence
Leavenworth, KS

Sedlock Family
 Kersten Concrete Construction
 Geiger Ready-Mix Co., Inc.



High Rise
Cerner Innovation Campus
Phase I & II
Kansas City, MO

Cerner Corporation
 J.E. Dunn Construction Co.
 Talon Concrete & Aggregates LLC
 Gould Evans
 Thornton Tomasetti



Wastewater
Liberty Wastewater
Treatment Plant
Liberty, MO

City of Liberty, MO
 Goodwin Brothers Construction Co.
 Geiger Ready-Mix Co., Inc.



Parking Lot
Fenton Nissan
Kansas City, KS

Brad Fenton
 George J. Shaw Construction
 Fordyce Concrete Co., Inc.
 WRL General Contractors
 BWA Architects
 Olsson Associates



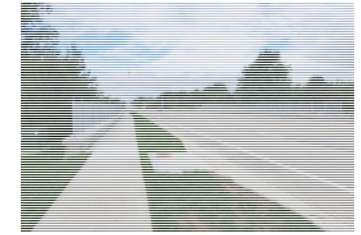
Decorative Residential
Jacobs Driveway
Overland Park, KS

Jacobs Family
 Towner Inc.
 Geiger Ready-Mix Co., Inc.



Commercial Flatwork
ScriptPro
Mission, KS

ScriptPro
 J.E. Dunn Construction Co.
 Talon Concrete & Aggregates
 Icon Architecture
 Norton & Schmidt



Municipal Paving
143rd St., Nall to Windsor
Leawood, KS

City of Leawood, KS
 Miles Excavating
 Geiger Ready-Mix Co., Inc.
 Burns & McDonnell



Countertops/Furniture
Line Creek Community Center
Kansas City, MO

Line Creek Community Center
 Concrete Designs
 Will's Concrete Concepts
 MTS Contracting



Commercial Floors
FedEx Ground
Olathe, KS

JDC Olathe
 Lithko Contracting, LLC
 Geiger Ready-Mixed Co., Inc.
 Pepper Construction
 JRA Architecture



Outdoor Living Area
Venzon Outdoor Living Space
Overland Park, KS

Venzon Family
 ACS Concrete Construction
 Quicksilver Readymix LLC



Pervious Concrete
Rob Sight Ford
Kansas City, MO

Rob Sight Ford
 Bedrock Concrete
 Geiger Ready-Mix Co., Inc.
 CFS Engineers

