

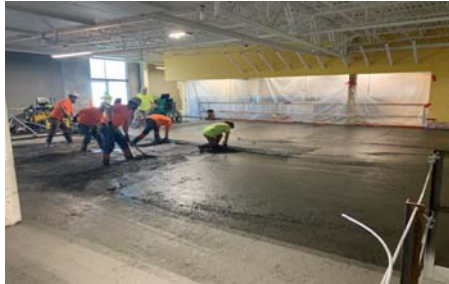
The Concrete Promotional Group

# EXCELLENCE IN CONCRETE 2022 AWARDS



**Residential Flatwork**  
**Miles Residence**  
**Basehor, KS**

Steve Miles  
Miles Excavating Inc.  
Geiger Ready-Mix Co., Inc.



**Commercial Floor**  
**Garmin Building 5, Mezzanine Expansion**  
**Olathe, KS**

Garmin International  
McCownGordon Construction  
George J. Shaw Construction Co.  
Multistudio  
Braun Intertec  
Fordyce Concrete Co.



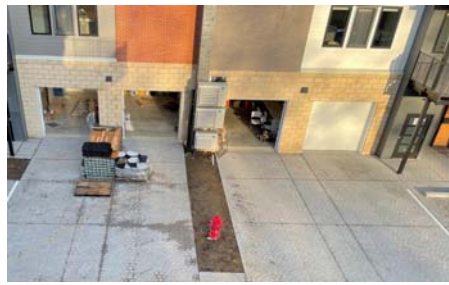
**Polished Concrete**  
**McBee's Coffee N Carwash**  
**Liberty, MO**

McBee Construction  
Bakken Construction  
Geiger Ready-Mix Co., Inc.



**Concrete Home**  
**Fellows Residence**  
**Olathe, KS**

Fellows Family  
Shane Roach Concrete  
Fox Blocks  
Kansas Building Products  
Century Concrete



**Commercial Decorative**  
**Blume**  
**Shawnee, KS**

Cardinal Crest KC  
Fleshman Construction Inc.  
Clockwork  
Bob D. Campbell & Co.  
Geiger Ready-Mix Co., Inc.



**Paving/DOT**  
**MoDOT Bridge over Chipman Road**  
**Lee's Summit, MO**

Missouri Dept. of Transportation  
Pyramid Contractors Inc.  
George Butler & Associates  
Talon Concrete



**Commercial Development**  
**Liberty Parkway & Wither Road**  
**Liberty, MO**

NorthPoint Development  
Concrete Strategies  
Purdum Construction  
Clayco Construction  
Contegra Construction Co, LLC  
Geiger Ready-Mix Co., Inc.



**Multi Family**  
**The PEAK at Sonoma**  
**Lenexa, KS**

Sonoma Peak RJB, LLC  
Stellar Concrete, LLC  
Oddo Development  
BSE Structural Engineers  
Klover Architects Inc.  
Penny's Concrete Inc.



**Parking Lot**  
**USPS KC Distribution Center**  
**Kansas City, MO**

United States Postal Service  
Concrete Strategies  
J.E. Novack Construction Co.  
Geiger Ready-Mix Co., Inc.

# CPG EXCELLENCE IN CONCRETE AWARDS 2022



## **Municipal Infrastructure Argentine Pump Station Kansas City, KS**

Unified Government WYCO & KCK  
Kissick Construction  
Michels  
Cole Associates Inc.  
Fordyce Concrete Co.



## **Commercial Flatwork Raptor Recycle & Transfer Station Grandview, MO**

Raptor Recycle & Transfer, LLC  
Harbinger Concrete  
EAB Construction  
Geiger Ready-Mix Co., Inc.



## **Site Cast Tilt-Up Standard Beverage Lawrence, KS**

Standard Beverage  
Fenix Construction Company  
ARCO National Construction  
GMA Architects, Inc.  
Penny's Concrete Inc.



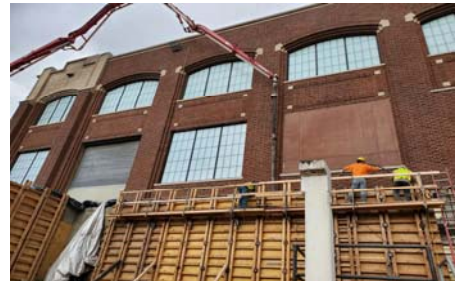
## **Municipal Paving I-35 & 119th Street Improvements Olathe, KS**

City of Olathe, KS  
Miles Excavating Inc.  
HNTB  
Geiger Ready-Mix Co., Inc.



## **Low Rise DeSoto High School Performing Arts Addition DeSoto, KS**

DeSoto USD #232  
Lithko Contracting, LLC  
Manning Construction  
HTK Architects  
Structural Engineering Associates  
Penny's Concrete Inc.



## **Concrete Renovation East Bottoms Pump Station Phase 3 Kansas City, MO**

Kansas City, MO Water Services  
Garney Construction  
Burns & McDonnell  
Wellner Architects, Inc.  
Geiger Ready-Mix Co., Inc.



The Excellence in Concrete Awards are presented each year by the Concrete Promotional Group (CPG), to recognize outstanding work in concrete construction.

The 2022 Awards, presented November 9, 2022 at the Fiorella's Event Center in Overland Park, KS, include awards in 16 different categories.

CPG is a non-profit trade association, representing the concrete industry in the Greater Kansas City area, promoting quality concrete construction and best management practices.

Please join CPG on social media platforms:



## **High Rise 1400KC Kansas City, MO**

Burns & McDonnell  
Epic Concrete Construction  
Talon Concrete

## **Concrete Promotional Group, Inc.**

15700 College Blvd., Suite 103, Lenexa, KS 66219  
913-341-5800, [www.concretepromotion.com](http://www.concretepromotion.com)