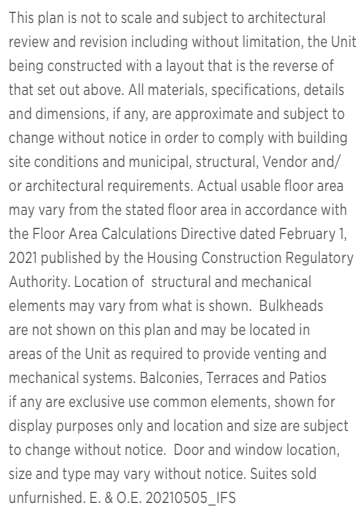
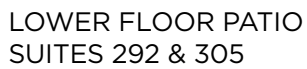
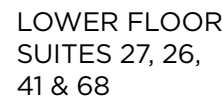
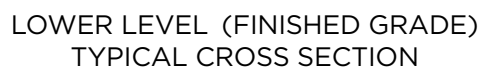


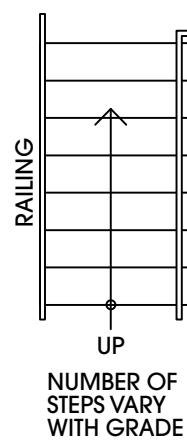


1A

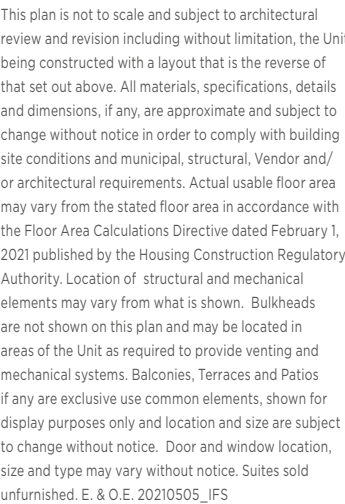
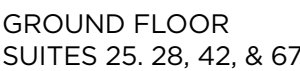




1B

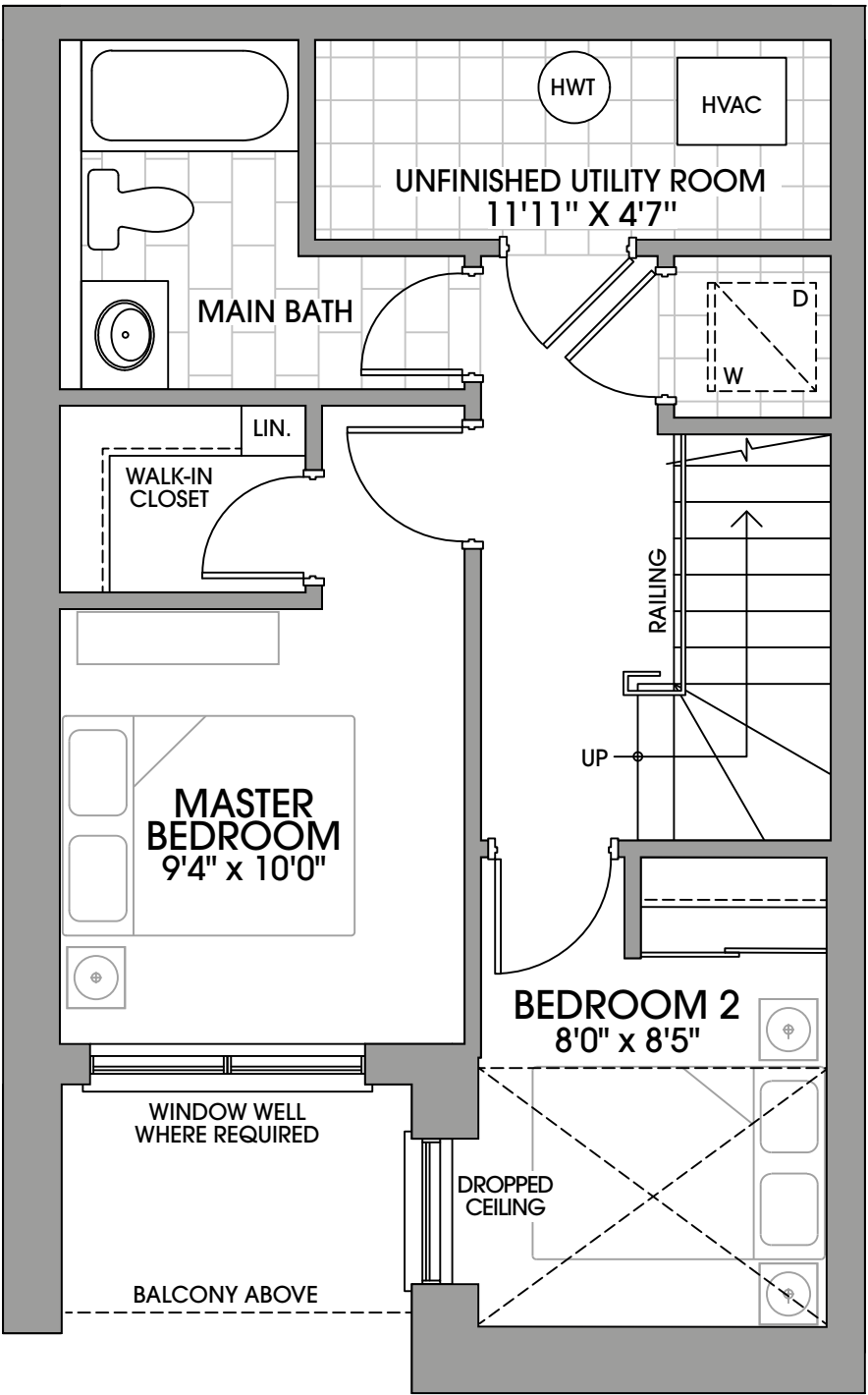
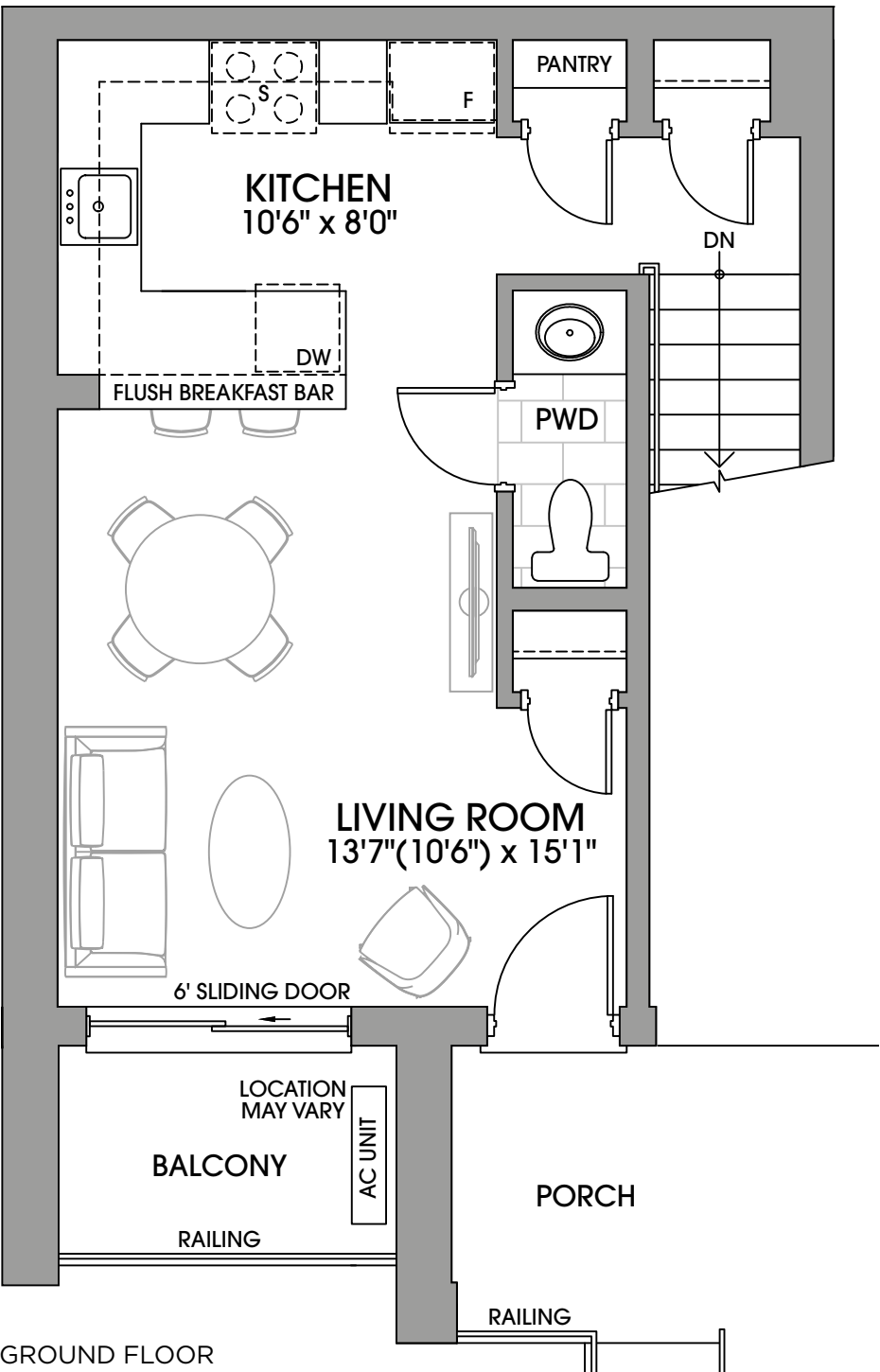


GROUND LEVEL (SECOND STOREY) TYPICAL CROSS SECTION

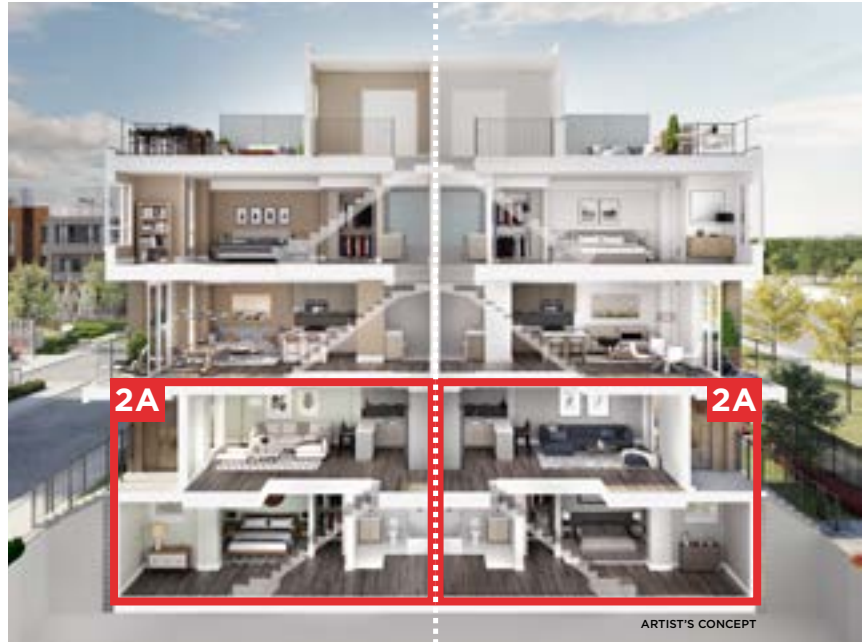




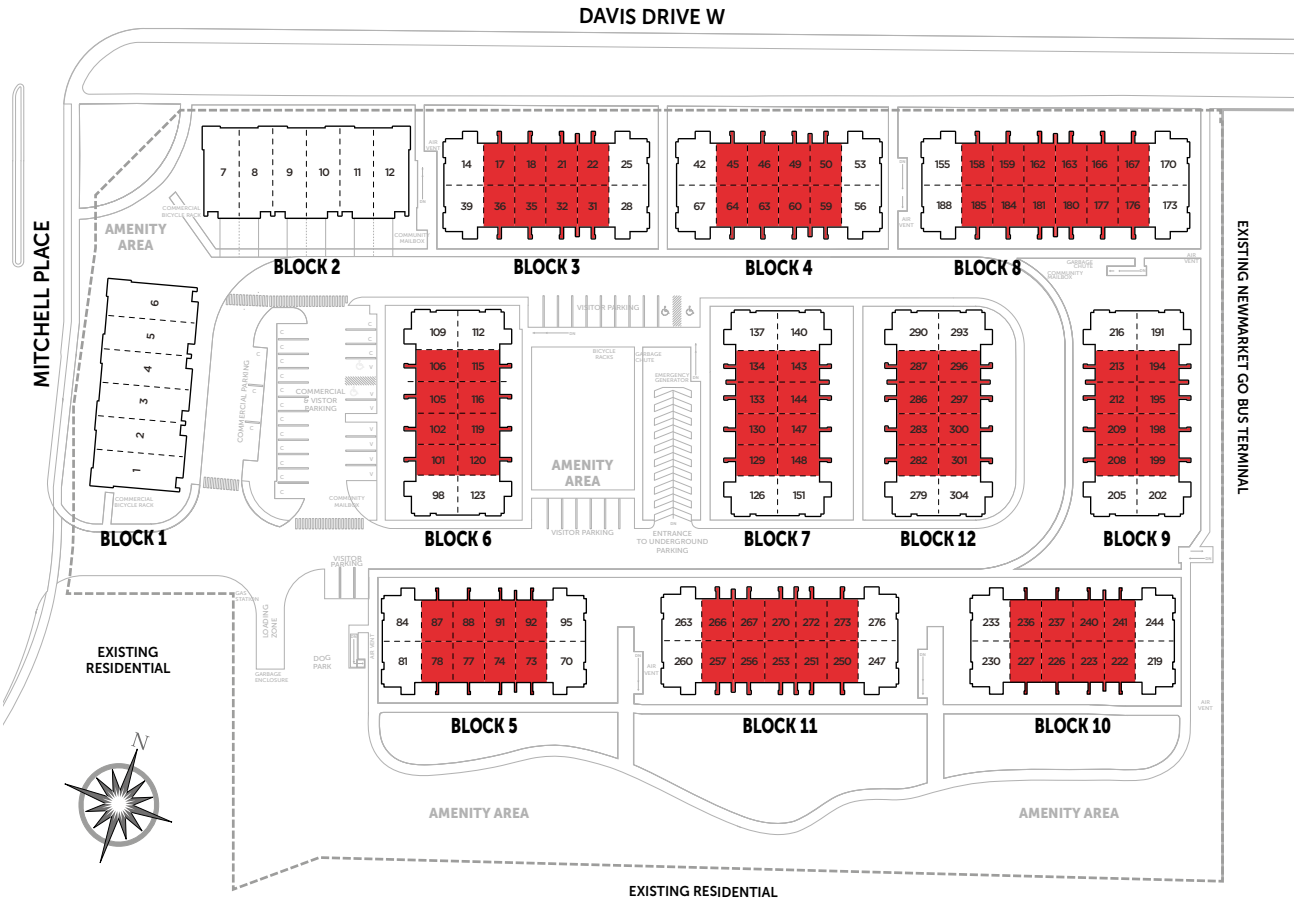
2A



NOTE:
SUITES 251 & 272
BEDROOM 2
7'6" x 8'5"



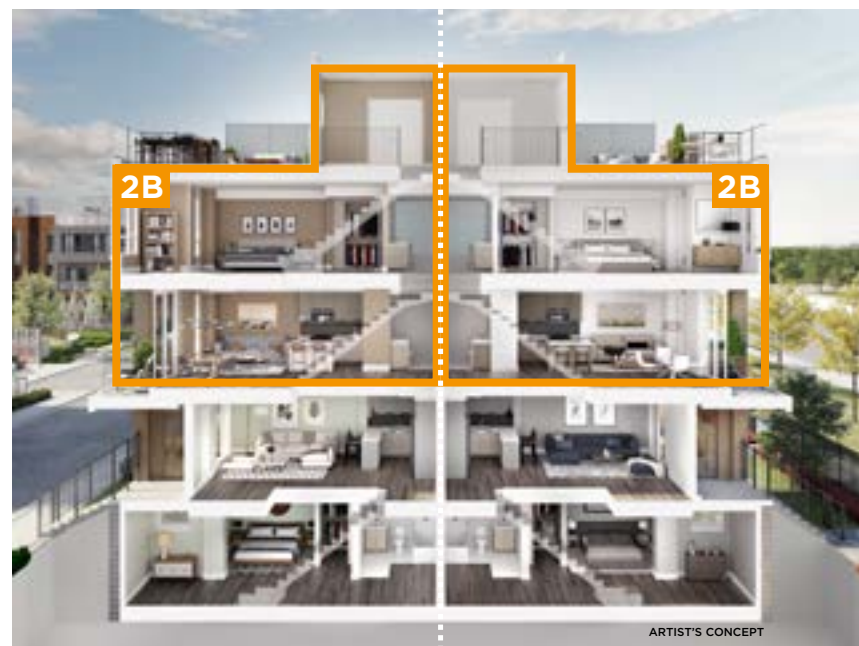
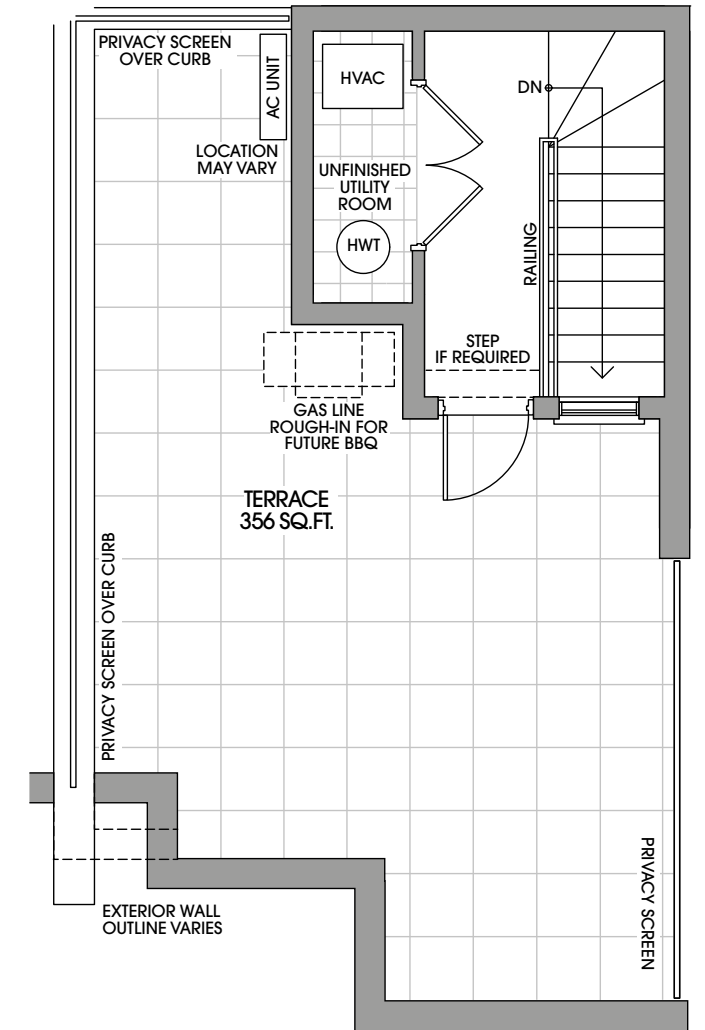
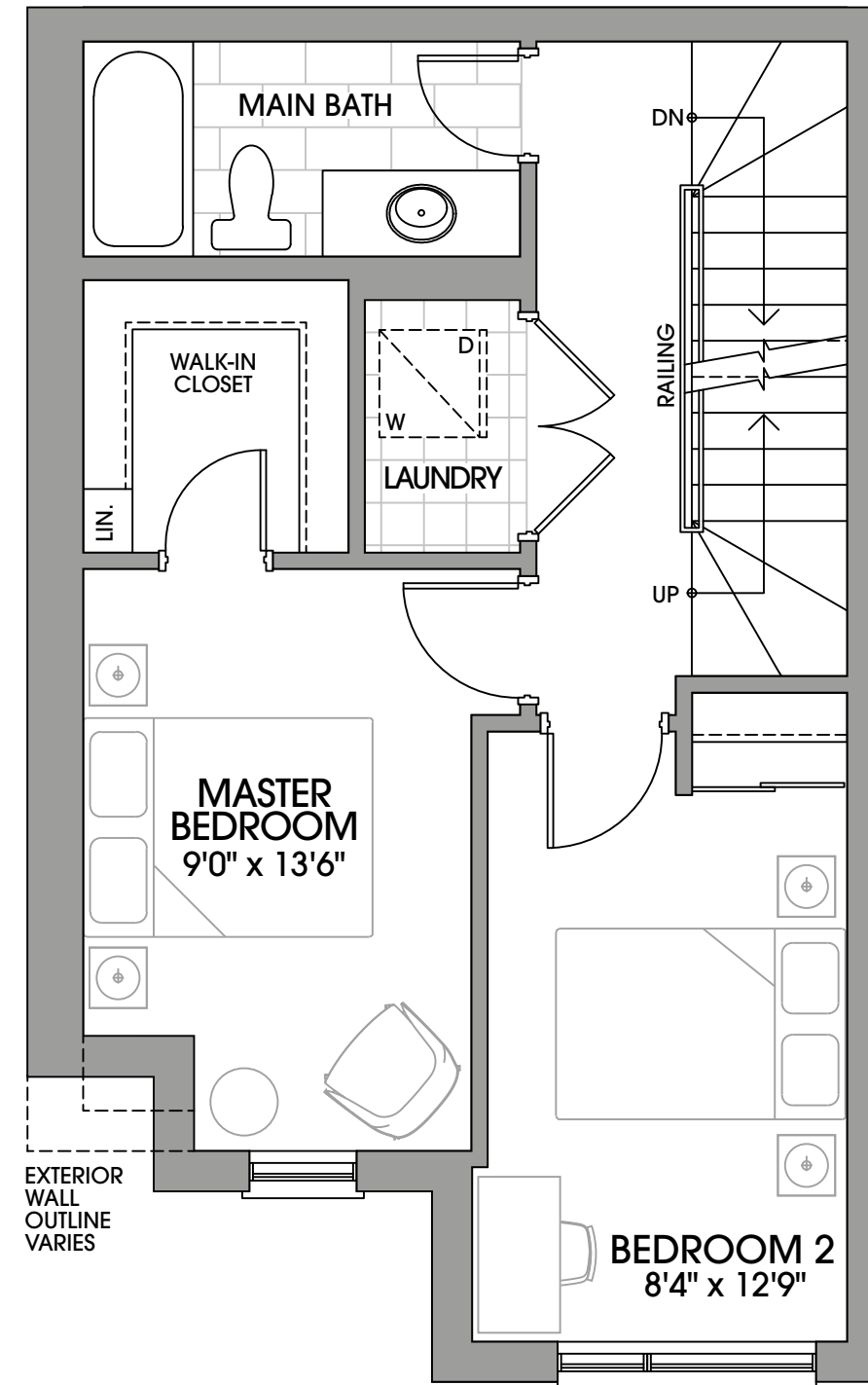
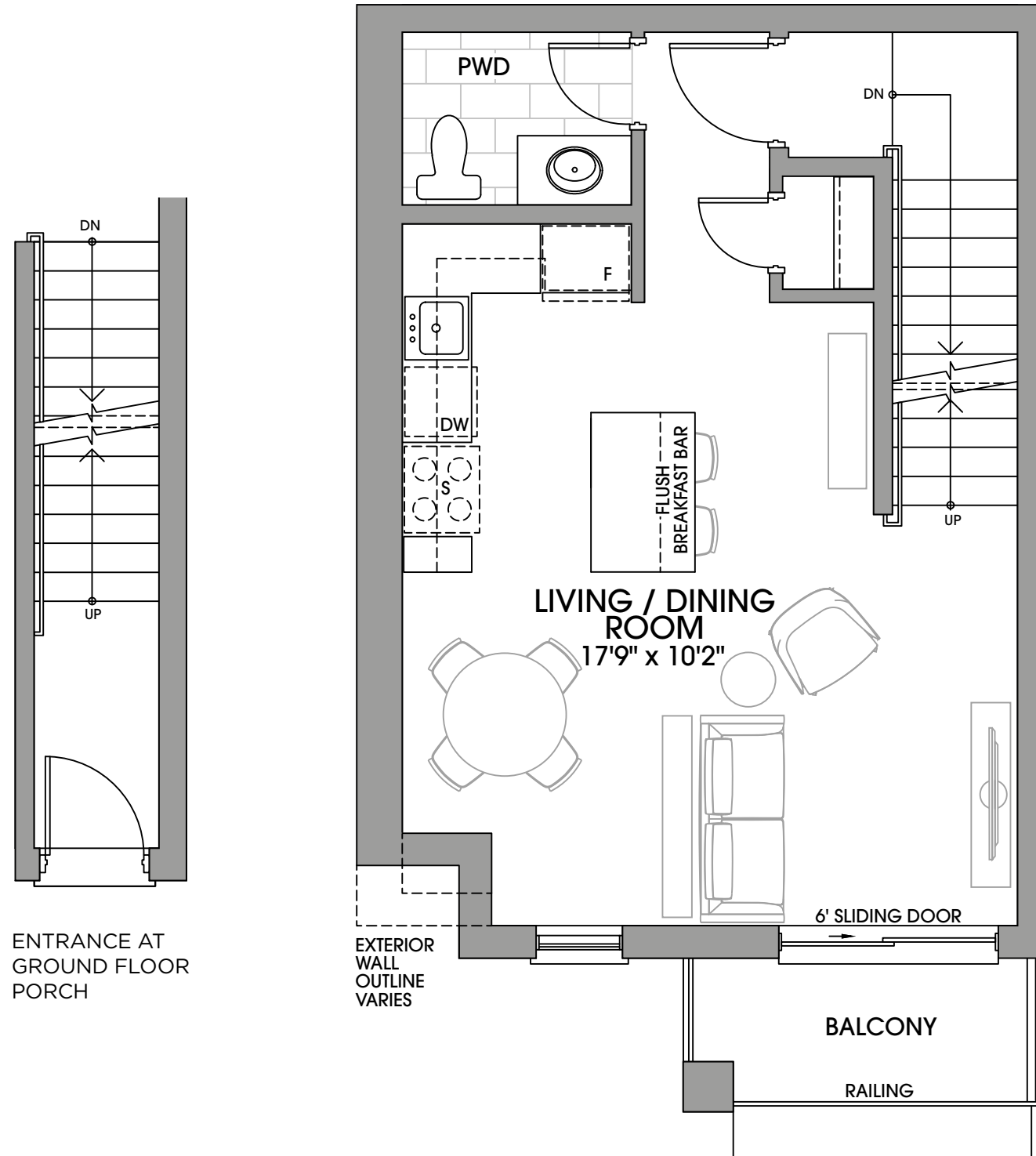
GROUND LEVEL (SECOND STOREY)
TYPICAL CROSS SECTION



This plan is not to scale and subject to architectural review and revision including without limitation, the Unit being constructed with a layout that is the reverse of that set out above. All materials, specifications, details, and dimensions, if any, are approximate and subject to change without notice in order to comply with building site conditions and municipal, structural, Vendor and/or architectural requirements. Actual usable floor area may vary from the stated floor area in accordance with the Floor Area Calculations Directive dated February 1, 2021 published by the Housing Construction Regulatory Authority. Location of structural and mechanical elements may vary from what is shown. Bulkheads are not shown on this plan and may be located in areas of the Unit as required to provide venting and mechanical systems. Balconies, Terraces and Patios if any are exclusive use common elements, shown for display purposes only and location and size are subject to change without notice. Door and window location, size and type may vary without notice. Suites sold unfurnished. E & O.E. 20210505_IF5

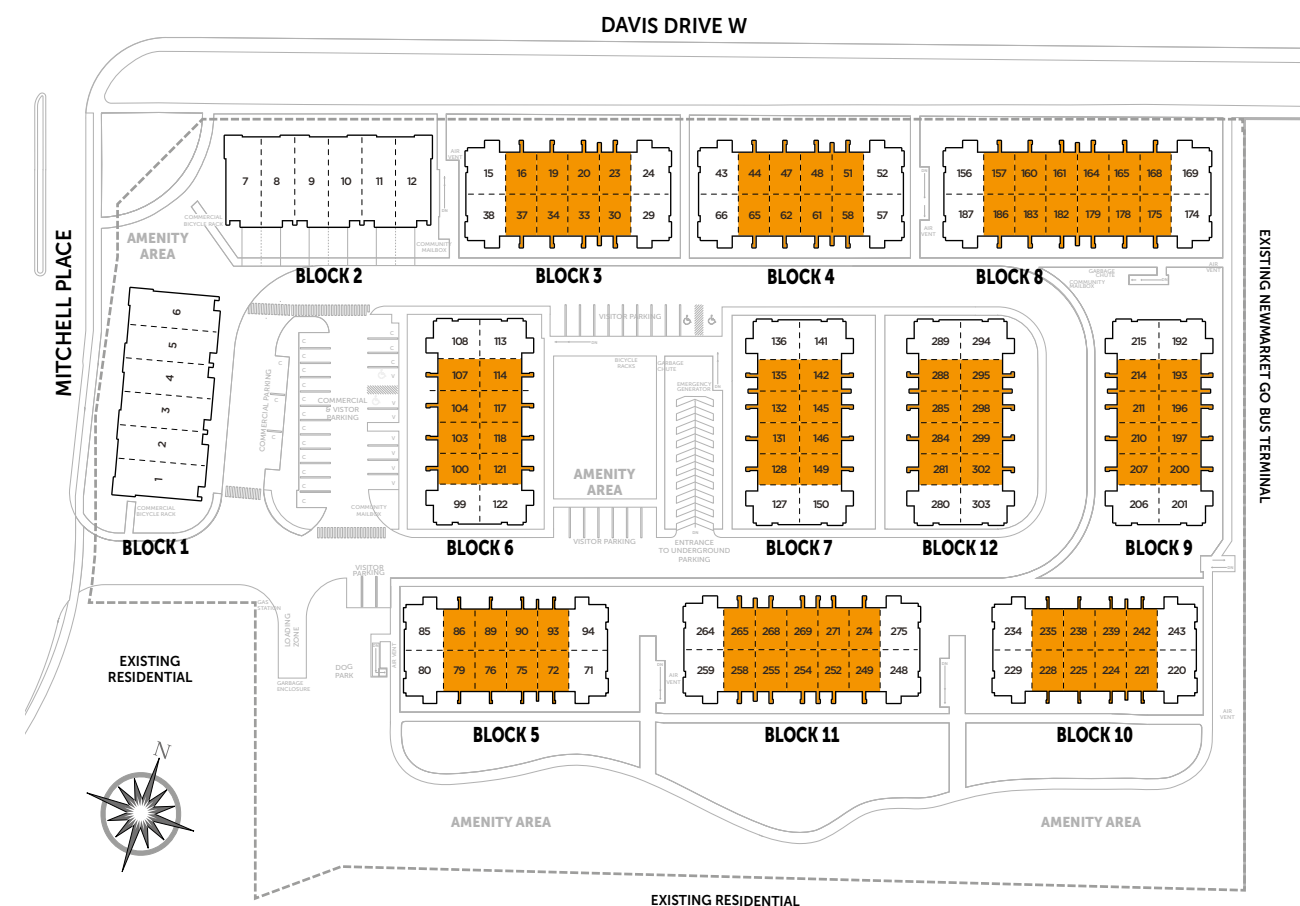
2 BEDROOM SUITE 1,235 SQ. FT.

2B



TERRACE
THIRD
SECOND
GROUND
LOWER

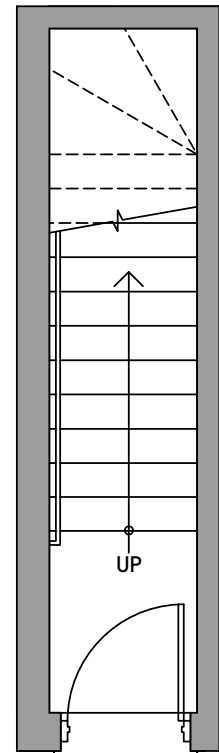
SECOND FLOOR / THIRD FLOOR (THIRD/FOURTH STOREY)
TYPICAL CROSS SECTION



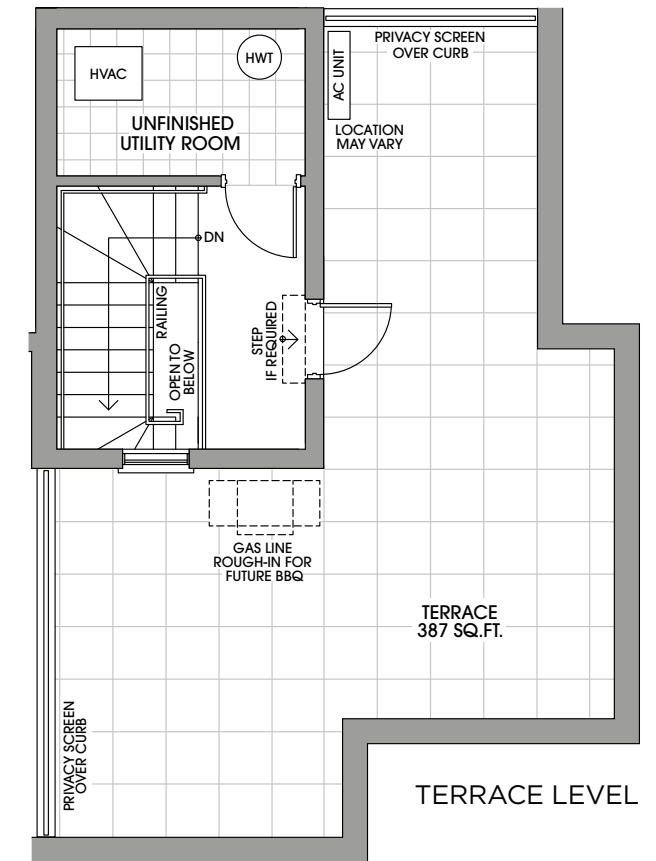
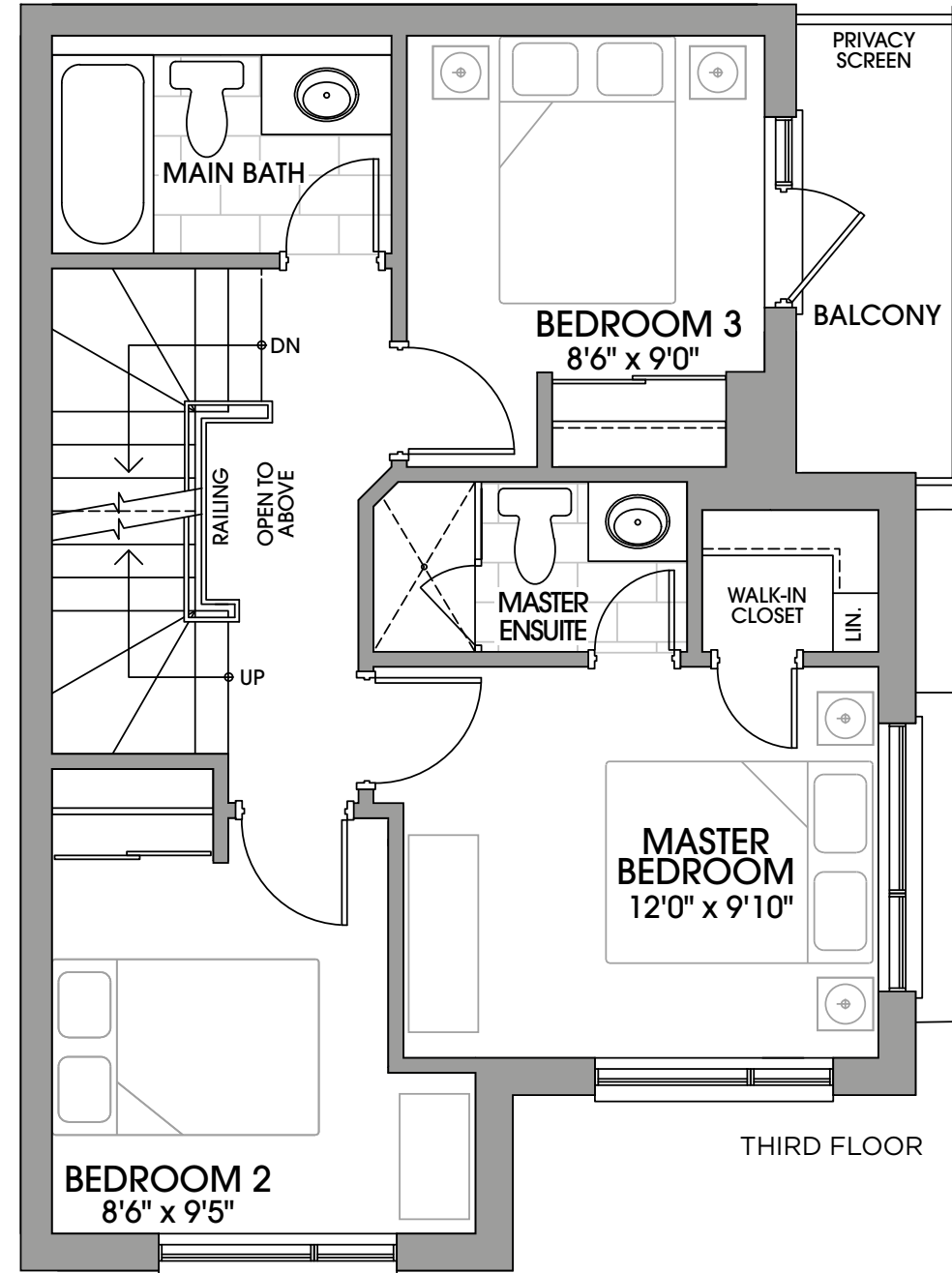
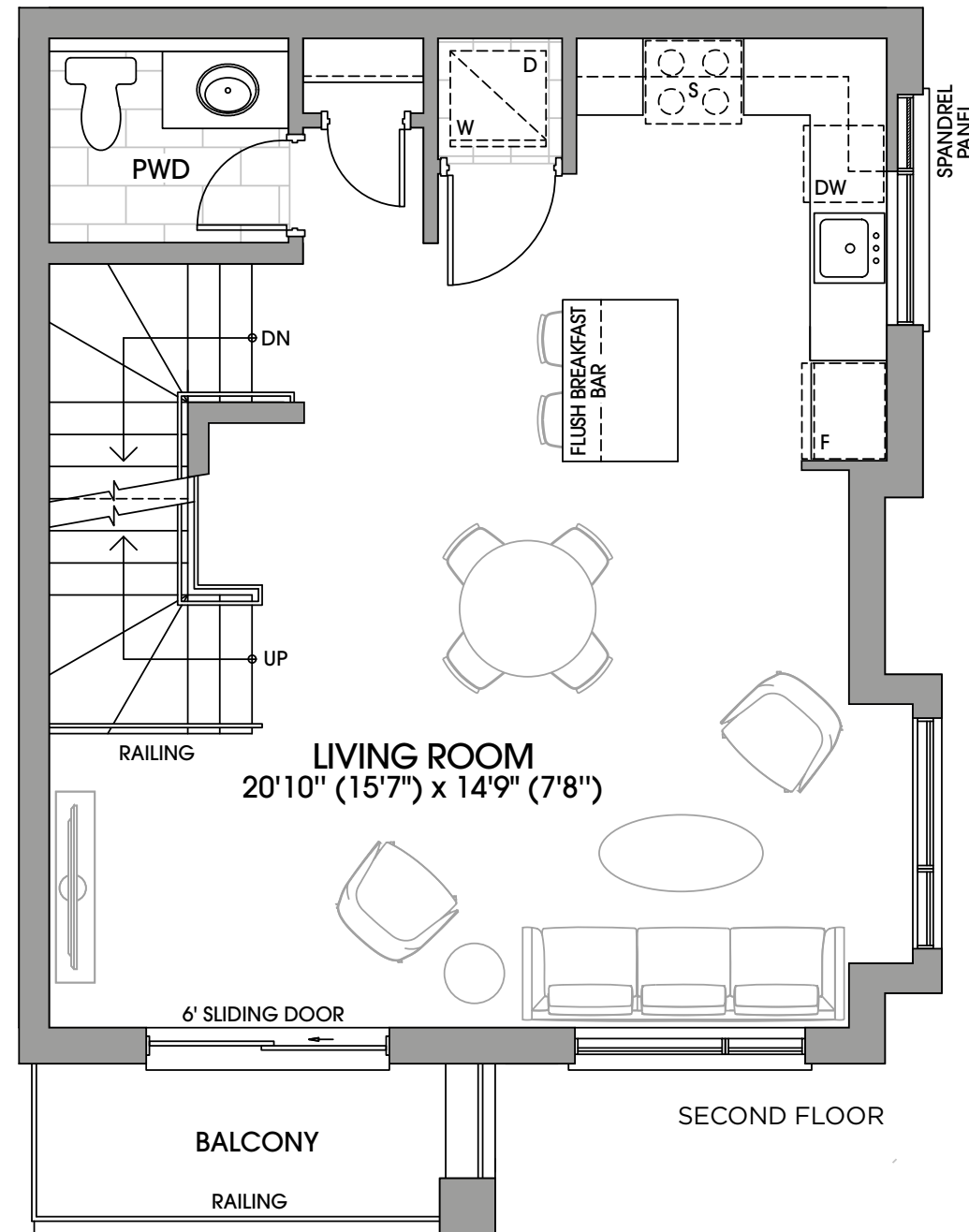
This plan is not to scale and subject to architectural review and revision including without limitation, the Unit being constructed with a layout that is the reverse of that set out above. All materials, specifications, details and dimensions, if any, are approximate and subject to change without notice in order to comply with building site conditions and municipal, structural, Vendor and/or architectural requirements. Actual usable floor area may vary from the stated floor area in accordance with the Floor Area Calculations Directive dated February 1, 2021 published by the Housing Construction Regulatory Authority. Location of structural and mechanical elements may vary from what is shown. Bulkheads are not shown on this plan and may be located in areas of the Unit as required to provide venting and mechanical systems. Balconies, Terraces and Patios if any are exclusive use common elements, shown for display purposes only and location and size are subject to change without notice. Door and window location, size and type may vary without notice. Suites sold unfurnished. E. & O.E. 20210505_IFS

3 BEDROOM SUITE 1,485 SQ. FT.

3A



ENTRANCE AT
GROUND FLOOR
PORCH



TERRACE
THIRD
SECOND
GROUND
LOWER

SECOND FLOOR / THIRD FLOOR (THIRD/FOURTH STOREY)
TYPICAL CROSS SECTION



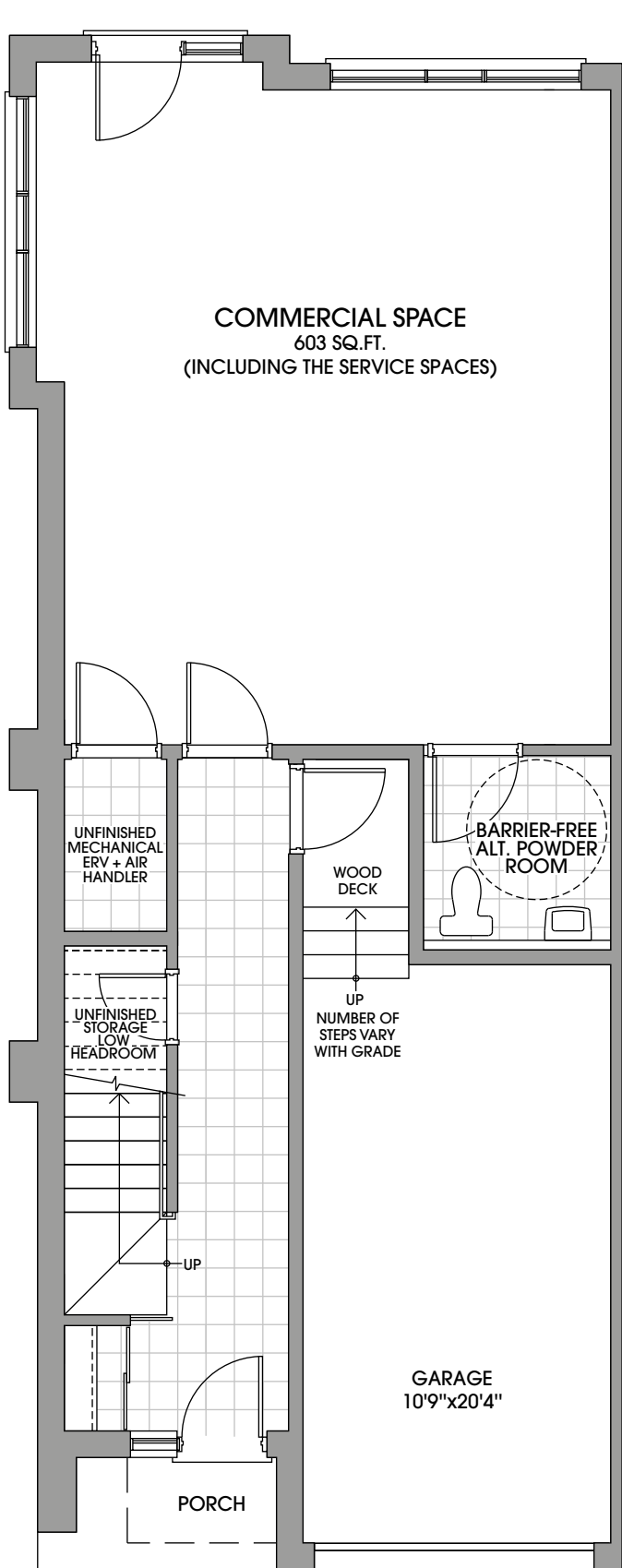
This plan is not to scale and subject to architectural review and revision including without limitation, the Unit being constructed with a layout that is the reverse of that set out above. All materials, specifications, details and dimensions, if any, are approximate and subject to change without notice in order to comply with building site conditions and municipal, structural, Vendor and/or architectural requirements. Actual usable floor area may vary from the stated floor area in accordance with the Floor Area Calculations Directive dated February 1, 2021 published by the Housing Construction Regulatory Authority. Location of structural and mechanical elements may vary from what is shown. Bulkheads are not shown on this plan and may be located in areas of the Unit as required to provide venting and mechanical systems. Balconies, Terraces and Patios if any are exclusive use common elements, shown for display purposes only and location and size are subject to change without notice. Door and window location, size and type may vary without notice. Suites sold unfurnished. E. & O.E. 20210505_IF5



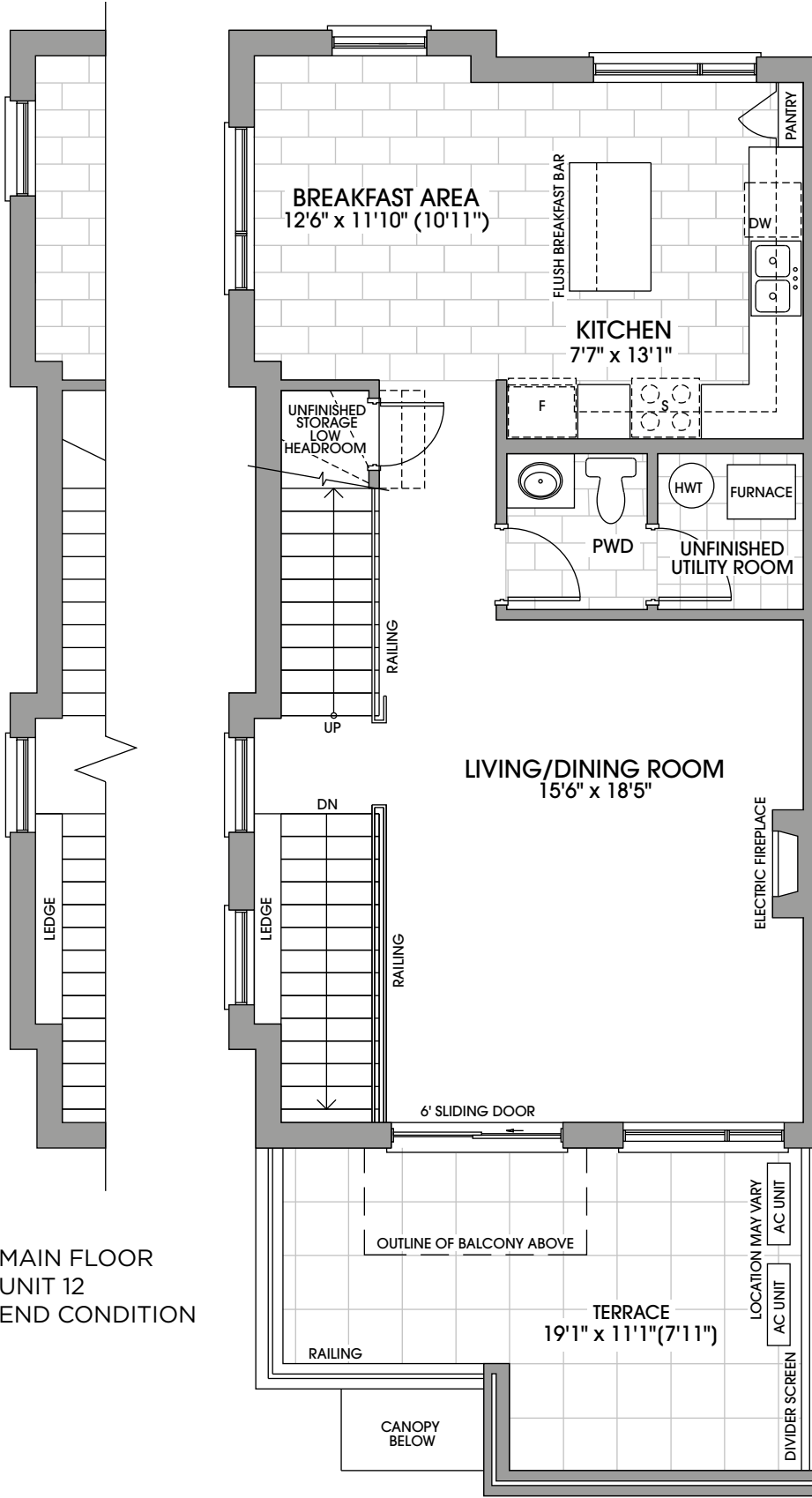
3 BEDROOM CORNER
2,571 SQ. FT.

RESIDENTIAL	1,914 SQ FT
COMMERCIAL	603 SQ FT
TOTAL	2,571 SQ FT

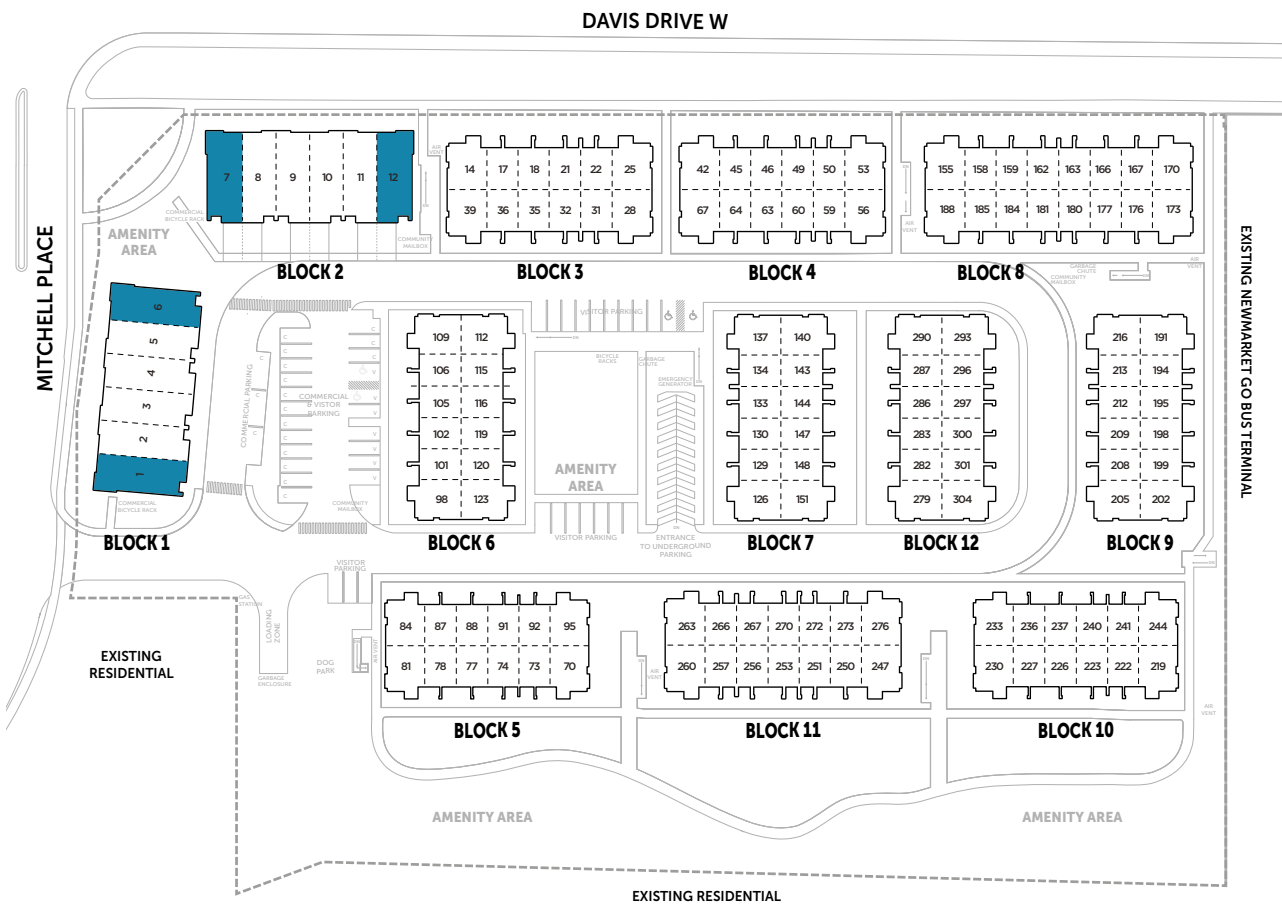
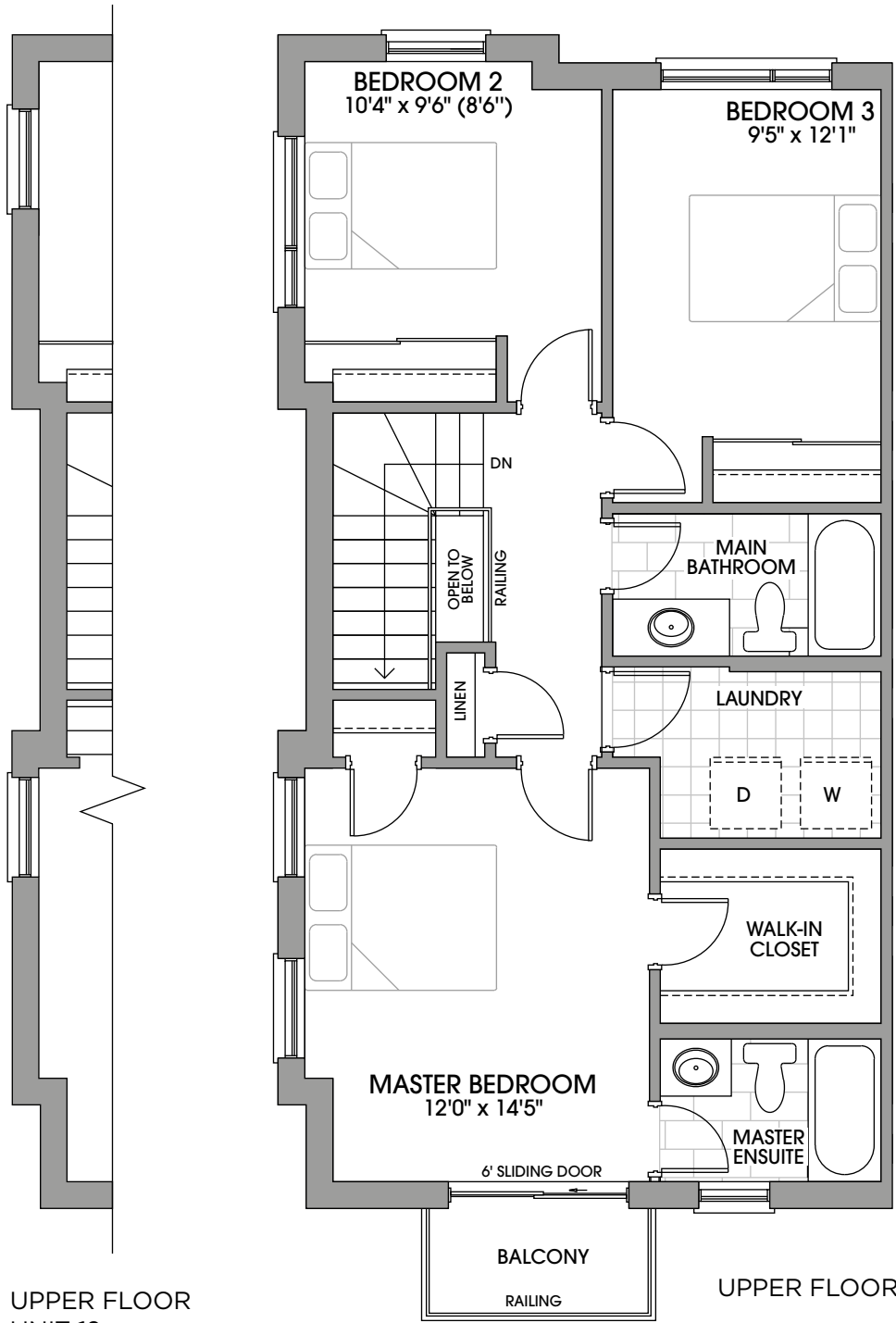
Live/
Work



GROUND FLOOR



MAIN FLOOR



This plan is not to scale and subject to architectural review and revision including without limitation, the Unit being constructed with a layout that is the reverse of that set out above. All materials, specifications, details and dimensions, if any, are approximate and subject to change without notice in order to comply with building site conditions and municipal, structural, Vendor and/or architectural requirements. Actual usable floor area may vary from the stated floor area in accordance with the Floor Area Calculations Directive dated February 1, 2021 published by the Housing Construction Regulatory Authority. Location of structural and mechanical elements may vary from what is shown. Bulkheads are not shown on this plan as required to provide venting and mechanical systems. Balconies, Terraces and Patios if any are exclusive use common elements, shown for display purposes only and location and size are subject to change without notice. Door and window location, size and type may vary without notice. Suites sold unfurnished. E. & O.E. 20210505_IF5



LIVE/WORK FRONT ELEVATION



LIVE/WORK REAR ELEVATION