

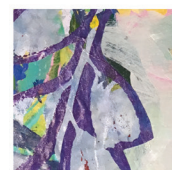
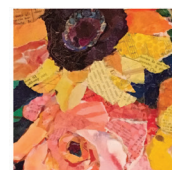
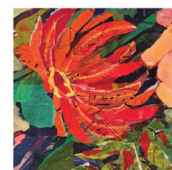
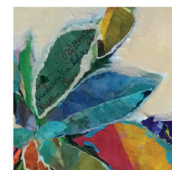
fabulous FLORALS!

SUPPLY LIST

[CLICK](#) for Amazon.com links

REQUIRED supplies:

- **RICE PAPER**, Hoshō or Shuji Gami Kozo Paper Roll or sketch pad. Washi or Unyuri white papers with and without fibers/texture purchase at your local art supply or craft store in the Chinese brush painting section.
- **VARIETY OF FOUND PAPERS**, sheet music, maps, hand written notes, old book pages, dry waxed deli paper, old maps – variety of thickness and textures. *You can do this totally with found papers.*
- **DECORATIVE PAPERS**, papers you purchase at your local art supply store (not scrapbook paper) with fiber, embossing, metallic patterning, iridescent patterning. Please purchase in white or natural if possible, this allows for the most color options when painting.
- **NO MAGAZINES or shiny coated printed papers**
- **GEL PRESS MONPRINTING PRINTING PLATE** 8x10 size with **HARD RUBBER BRAYER**
- **GOLDEN FLUID ACRYLIC PAINTS & WHITE GESSO** for under-painting on panel AND hand-painting papers -- colors of your choice, keeping in mind the subject matter and your ability to mix color. Small container of white gesso for making some colors lighter and opaque.
- **CANVAS PANELS economy surface** for support. This is mat board covered with pre-primed canvas, NOT stretched canvas, **1-2 8x8's** for small studies and one large format such as **20x24 or 16x20** for final project
- **PAINT BRUSHES** (variety of sizes) for under-painting and applying glue. OR use what you have on hand. I prefer **#8 Princeton Catalyst** filbert shaped short handle brush for the glue application.
- **LIQUITEX GLOSS GEL MEDIUM**, this is the collage glue. Please purchase GLOSS not matte.
- **WATER CONTAINER & DOLLAR STORE VINYL TABLE CLOTH/SHOWER CURTAIN** for table cover and/or to dry papers on.
- **PAPER TOWELS** for cleanup and brushes, **COATED PAPER PLATES OR PALETTE PAPER** for paint mixing palette.
- **PENCIL AND ERASER, CONTÉ OR VINE CHARCOAL** for drawing your bouquet onto your prepared surface
- **SKETCHBOOK OR LOOSE SHEETS** for drawing your thumbnail compositional sketches



paper
paintings



fabulous FLORALS!

SUPPLY LIST

OPTIONAL supplies:

- **WOOD PANELS** I work on cradled wood painting panels. This would be a more expensive option than canvas panel and does require a coat of gesso primer/sealer, but cradled panels do not require framing!
- **GALLON PLASTIC ZIP BAGS**
For organizing papers by color to take home
- **MIXED MEDIA TOOLS**
Stencils, string, yarn, scraping tools, Q-tips, makeup sponges, etc. For use on the Gel Plate. Anything fun that you may have in your studio that you'd like to experiment with.

CLASSROOM shared supplies:

- **FOR THE DURATION OF CLASS** Elizabeth will bring a variety of shared stencils, string, masking tools, stamping material, texture plates, crayons, wax candles, etc.

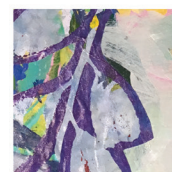
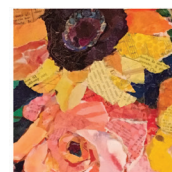
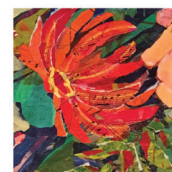
FOR PURCHASE:

- **AT THE WORKSHOP** Elizabeth will have a variety of 1oz. Golden Fluid Acrylic Paints, Stencil Girl Stencils, Rubber Moon art stamps, books, aprons, note cards, small originals, etc. Cash, credit, check accepted.

GET READY
To Have Some Fun!

Workshop Description:

We will be drawing florals from a still life setup and modifying it to create a compelling, FUN composition. We'll cover how to paint your life drawing with a full range of fun, bright colors and shading. You will then learn how to hand-paint your own collage papers through a series of gel plate mono printing techniques in the color palette from your under-painting. Once you have created your paper palette you'll follow along and learn how to rip and glue and apply your papers in a painterly manner over the top of your underpainting. I'll cover how to tear with and without white edges, how to keep your pieces perfectly flat without cockling, and how to vary your paper brush marks in size and shape.



paper
paintings

