



City Administrator Memorandum

To: Mayor, Board of Aldermen
Cc: Management
From: Jeana Woods, City Administrator
Date: 10/12/2017
Re: Sales Tax Report – October 2017

The following are the local sales tax receipts received this week by the City from the State of Missouri for the month we indicate as October.

- General Fund (1%) \$478,144.27
- Capital Improvement Tax (CIT) (0.5%) \$234,823.36
- Transportation Sales Tax (0.5%) \$234,823.35

The City receives 2% in local sales tax; 1% General Fund, 0.5% Capital Improvement Tax (CIT), 0.5% Transportation Tax. The local sales tax collected in both the TIF areas are included in the above breakdowns then transferred to each appropriate TIF fund.

The City's local sales tax is received in the second month after purchases are made by consumers. For example, purchases made in January by consumers are reported and to be paid to the State by the businesses in February and received by the City in March.

The October receipts listed above represent the local sales tax collected and paid by the businesses from consumer purchases made in August. Some timing issues can arise due to varied payment deadlines by the State and/or actual payment activity by the businesses which can delay payments to the City.

Per the General Fund Sales Tax Report, enclosed, year-to-date 2017 receipts are **\$96,279 (2.4%) MORE** than 2016 receipts and **\$1,576 (0.0%) MORE** than projected in the FY2017 budget. CIT and Transportation sales tax activity proportionately mirror the general fund sales tax activity as both the CIT and Transportation sales tax received is half that of the general sales tax, excluding a few nuances in sales tax application.

Feel free to contact me if you have further questions.

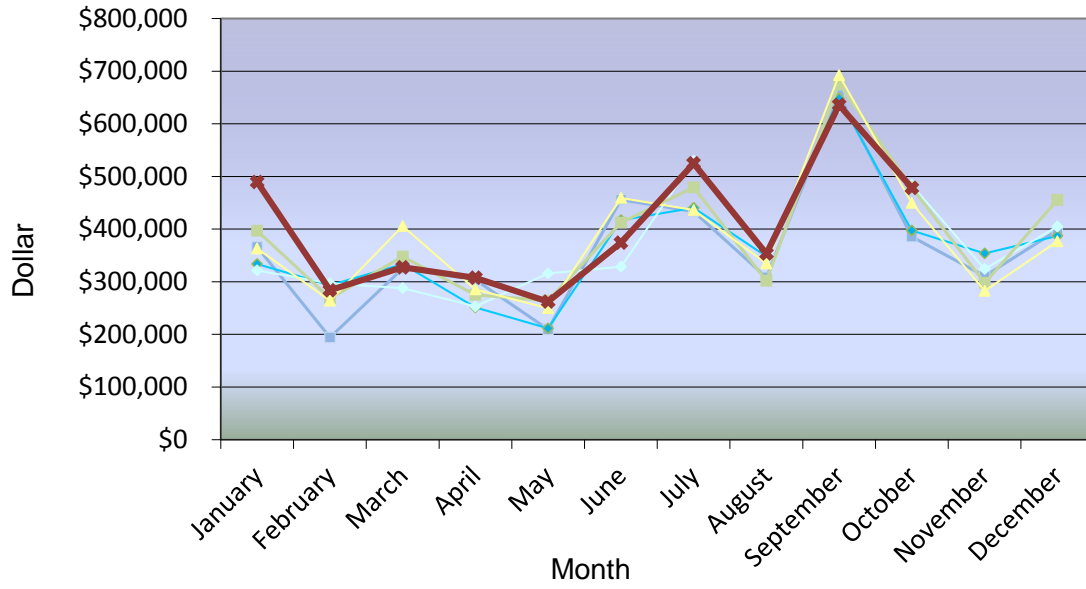
CITY OF OSAGE BEACH
General Fund Sales Tax Report

	Actuals						2017 vs. 2016		Projections		
	2012	2013	2014	2015	2016	2017	\$ Over/(Under)	% Over/(Under)	2017	\$ Over/(Under)	% Over/(Under)
January	\$365,847	\$333,440	\$321,330	\$396,732	\$363,206	\$489,362	\$126,156	34.7%	\$379,228	\$110,133	29.0%
February	\$194,341	\$293,228	\$297,010	\$268,691	\$263,937	\$283,830	\$19,893	7.5%	\$280,543	\$3,287	1.2%
March	\$325,282	\$333,430	\$287,756	\$347,538	\$405,757	\$327,570	(\$78,186)	-19.3%	\$362,021	(\$34,450)	-9.5%
April	\$303,887	\$251,301	\$253,243	\$275,189	\$285,540	\$307,623	\$22,083	7.7%	\$291,608	\$16,015	5.5%
May	\$209,575	\$211,476	\$315,721	\$264,095	\$249,636	\$262,171	\$12,535	5.0%	\$266,336	(\$4,165)	-1.6%
June	\$456,056	\$417,213	\$328,527	\$412,549	\$459,179	\$374,285	(\$84,894)	-18.5%	\$441,626	(\$67,341)	-15.2%
July	\$433,262	\$440,610	\$530,046	\$479,361	\$436,319	\$524,762	\$88,442	20.3%	\$494,036	\$30,726	6.2%
August	\$308,516	\$348,008	\$344,965	\$301,780	\$334,627	\$353,381	\$18,754	5.6%	\$348,845	\$4,537	1.3%
September	\$654,383	\$647,657	\$631,363	\$676,179	\$692,355	\$635,702	(\$56,653)	-8.2%	\$703,257	(\$67,555)	-9.6%
October	\$385,731	\$397,257	\$483,716	\$479,507	\$449,996	\$478,144	\$28,148	6.3%	\$467,755	\$10,389	2.2%
November	\$310,730	\$353,946	\$324,228	\$297,607	\$282,471				\$334,167		
December	\$397,810	\$386,976	\$404,930	\$455,414	\$376,522				\$430,578		
Total	\$4,345,420	\$4,414,542	\$4,522,836	\$4,654,641	\$4,599,545	\$4,036,830	\$96,279	2.1%	\$4,800,000	\$1,576	0.0%
Budget	\$4,275,000	\$4,500,000	\$4,455,000	\$4,600,000	\$4,700,000	\$4,800,000			\$4,800,000		
YTD October	\$3,636,880	\$3,673,620	\$3,793,677	\$3,901,619	\$3,940,552	\$4,036,830	\$96,279	2.4%	\$4,035,255	\$1,576	0.0%

Note to reader: The actual amounts above represent the general fund local sales tax received (1%) by the City from the State of Missouri during the month indicated. Local sales tax is received by the City in the second month after purchases are made by consumers. For example, purchases made in January by consumers are reported and to be paid to the State by the businesses in February and received by the City in March. Some timing issues can arise due to varied payment deadlines by the State and/or actual payment activity by the businesses which can delay payments to the City. Projection amounts are figured by averaging the percentage collected for the month indicated over a five (5) year period.

Jeana L Woods, CPA, City Administrator
573.302.2000 x290

General Fund Sales Tax



■ 2012
 ■ 2013
 ■ 2014
 ■ 2015
 ■ 2016
 ■ 2017

General Fund Sales Tax Comparison of Year-to-Date OCTOBER 2017

