

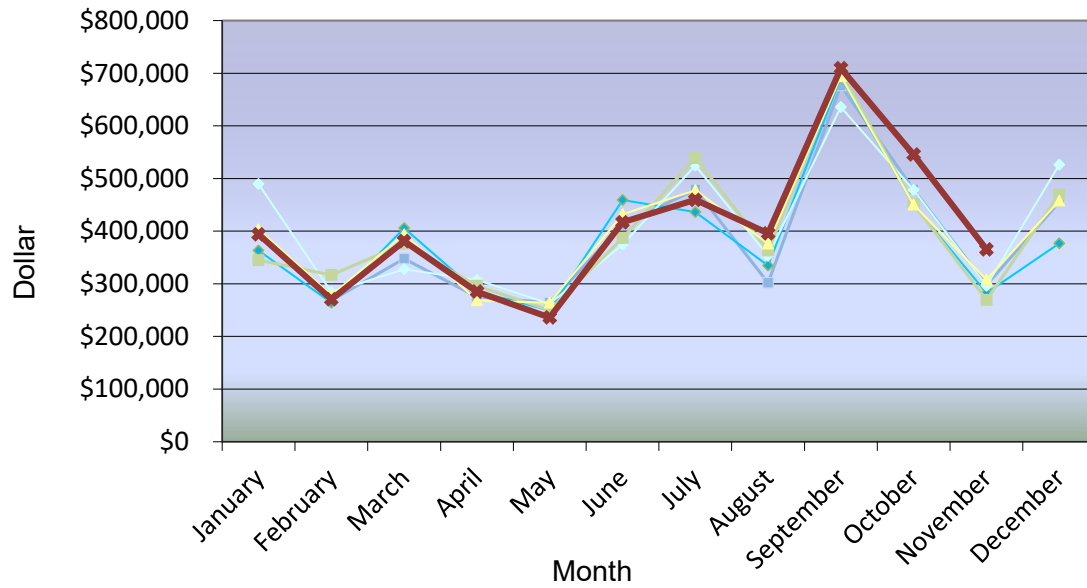
CITY OF OSAGE BEACH
General Fund Sales Tax Report

	Actuals						2020 vs. 2019		FY2020 Operations Budget Projections			COVID-19 Impact Projections @ 93%		
	2015	2016	2017	2018	2019	2020	\$ Over/(Under)	Over/(Under)	2020	Over/(Under)	Over/(Under)	2020	Over/(Under)	Over/(Under)
January	\$396,732	\$363,206	\$489,362	\$344,917	\$403,523	\$393,895	(\$9,628)	-2.4%	\$413,324	(\$19,428)	-4.7%	\$413,324	(\$19,428)	-4.7%
February	\$268,691	\$263,937	\$283,830	\$316,894	\$278,275	\$270,621	(\$7,655)	-2.8%	\$292,060	(\$21,439)	-7.3%	\$292,060	(\$21,439)	-7.3%
March	\$347,538	\$405,757	\$327,570	\$376,130	\$394,018	\$381,043	(\$12,975)	-3.3%	\$382,967	(\$1,923)	-0.5%	\$382,967	(\$1,923)	-0.5%
April	\$275,189	\$285,540	\$307,623	\$296,086	\$268,358	\$285,071	\$16,713	6.2%	\$296,439	(\$11,368)	-3.8%	\$296,439	(\$11,368)	-3.8%
May	\$264,095	\$249,636	\$262,171	\$249,843	\$263,843	\$235,926	(\$27,917)	-10.6%	\$266,810	(\$30,884)	-11.6%	\$240,129	(\$4,203)	-1.8%
June	\$412,549	\$459,179	\$374,285	\$387,014	\$432,188	\$416,778	(\$15,411)	-3.6%	\$427,284	(\$10,507)	-2.5%	\$384,556	\$32,222	8.4%
July	\$479,361	\$436,319	\$524,762	\$538,630	\$478,072	\$459,514	(\$18,558)	-3.9%	\$508,372	(\$48,859)	-9.6%	\$462,619	(\$3,105)	-0.7%
August	\$301,780	\$334,627	\$353,381	\$363,356	\$376,437	\$395,920	\$19,483	5.2%	\$357,843	\$38,077	10.6%	\$325,637	\$70,283	21.6%
September	\$676,179	\$692,355	\$635,702	\$702,341	\$694,003	\$709,425	\$15,422	2.2%	\$703,565	\$5,860	0.8%	\$633,209	\$76,216	12.0%
October	\$479,507	\$449,996	\$478,144	\$451,640	\$450,024	\$545,476	\$95,451	21.2%	\$477,787	\$67,689	14.2%	\$430,008	\$115,468	26.9%
November	\$297,607	\$282,471	\$295,986	\$269,392	\$307,769	\$365,415	\$57,647	18.7%	\$300,666	\$64,750	21.5%	\$270,599	\$94,816	35.0%
December	\$455,414	\$376,522	\$526,266	\$469,651	\$457,761			0.0%	\$472,884		0.0%	\$425,454		0.0%
Total	\$4,654,641	\$4,599,545	\$4,859,082	\$4,765,894	\$4,804,272	\$4,459,084	\$112,573	2.3%	\$4,900,000	\$31,968	0.7%	\$4,557,000	\$327,538	7.2%
Budget	\$4,455,000	\$4,600,000	\$4,700,000	\$4,800,000	\$4,900,000	\$4,900,000			\$4,900,000			\$4,900,000		
YTD November	\$4,199,226	\$4,223,023	\$4,332,816	\$4,296,243	\$4,346,511	\$4,459,084	\$112,573	2.6%	\$4,427,116	\$31,968	0.7%	\$4,131,546	\$327,538	7.9%

Note to reader: The actual amounts above represent the general fund local sales tax received (1%) by the City from the State of Missouri during the month indicated. Local sales tax is received by the City in the second month after purchases are made by consumers. For example, purchases made in January by consumers are reported and to be paid to the State by the businesses in February and received by the City in March. Some timing issues can arise due to varied payment deadlines by the State and/or actual payment activity by the businesses which can delay payments to the City. Projection amounts are figured by averaging the percentage collected for the month indicated over a five (5) year period.

Jeana L Woods, CPA, ICMA-CM
City Administrator
573.302.2000 x1010

General Fund Sales Tax



■ 2015
 ◆ 2016
 ◆ 2017
 ■ 2018
 ▲ 2019
 ◆ 2020

General Fund Sales Tax Comparison of Year-to-Date November 2020

