

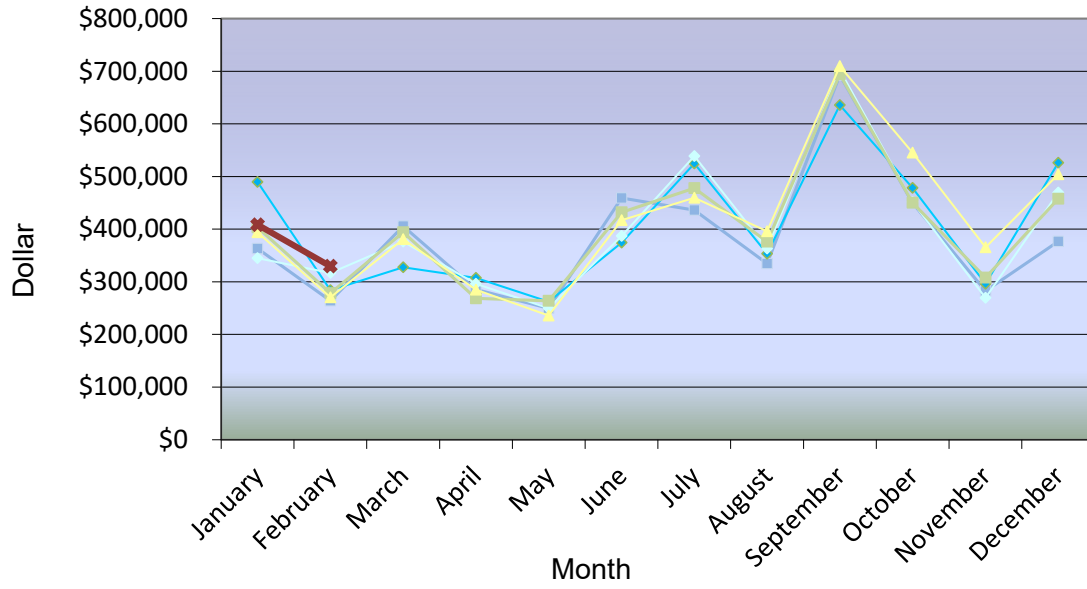
CITY OF OSAGE BEACH
General Fund Sales Tax Report

	Actuals						2021 vs. 2020		FY2021 Operating Budget Projections		
	2016	2017	2018	2019	2020	2021	\$ Over/(Under)	Over/(Under)	2021	Over/(Under)	Over/(Under)
January	\$363,206	\$489,362	\$344,917	\$403,523	\$393,895	\$408,385	\$14,490	3.7%	\$411,588	(\$3,203)	-0.8%
February	\$263,937	\$283,830	\$316,894	\$278,275	\$270,621	\$329,501	\$58,880	21.8%	\$291,645	\$37,856	13.0%
March	\$405,757	\$327,570	\$376,130	\$394,018	\$381,043				\$388,814		
April	\$285,540	\$307,623	\$296,086	\$268,358	\$285,071				\$297,653		
May	\$249,636	\$262,171	\$249,843	\$263,843	\$235,926				\$260,256		
June	\$459,179	\$374,285	\$387,014	\$432,188	\$416,778				\$426,967		
July	\$436,319	\$524,762	\$538,630	\$478,072	\$459,514				\$502,863		
August	\$334,627	\$353,381	\$363,356	\$376,437	\$395,920				\$376,270		
September	\$692,355	\$635,702	\$702,341	\$694,003	\$709,425				\$708,467		
October	\$449,996	\$478,144	\$451,640	\$450,024	\$545,476				\$490,068		
November	\$282,471	\$295,986	\$269,392	\$307,769	\$365,415				\$313,819		
December	\$376,522	\$526,266	\$469,651	\$457,761	\$503,993				\$481,590		
Total	\$4,599,545	\$4,859,082	\$4,765,894	\$4,804,272	\$4,963,077	\$737,886	\$73,370	1.5%	\$4,950,000	\$34,653	0.7%
Budget	\$4,600,000	\$4,700,000	\$4,800,000	\$4,900,000	\$4,900,000	\$4,950,000			\$4,950,000		
YTD February	\$627,143	\$773,192	\$661,811	\$681,799	\$664,516	\$737,886	\$73,370	11.0%	\$703,233	\$34,653	4.9%

Note to reader: The actual amounts above represent the general fund local sales tax received (1%) by the City from the State of Missouri during the month indicated. Local sales tax is received by the City in the second month after purchases are made by consumers. For example, purchases made in January by consumers are reported and to be paid to the State by the businesses in February and received by the City in March. Some timing issues can arise due to varied payment deadlines by the State and/or actual payment activity by the businesses which can delay payments to the City. Projection amounts are figured by averaging the percentage collected for the month indicated over a five (5) year period.

Jeana L Woods, CPA, ICMA-CM
 City Administrator
 573.302.2000 x1010

General Fund Sales Tax



■ 2016
 ◆ 2017
 ◆ 2018
 ■ 2019
 ▲ 2020
 ◆ 2021

General Fund Sales Tax Comparison of Year-to-Date February 2021

