

STATE EMERGENCY OPERATIONS CENTER

Situation Report (SitRep)

2020 Novel CoV/Wildland Fires/Civil Unrest | September 15, 2020

Incident Information		
Incident Number: 20-0265 2020 Novel CoV / 2020 Fires / Civil Unrest	SitRep Version: Update	SitRep #144
Incident Type: Pandemic/ Wildfire / Civil Unrest	SitRep Period: 09/15/20 0800 to 09/15/20 1600	
SEOC Activation Level: Level 1 – Full	Disaster Manager: Adam Wasserman	
Activated Emergency Centers: See pages 3 and 8	Activated Emergency Support Functions (ESF): 1, 2, 4, 5, 6, 7, 8, 11, 13, 14, 15, and 20	
SEOC Supervisor: Rob Sabarese	Date/Time SEOC Supervisor Approved: 09/15/20 1600	
General Situation		
<p>The Washington State Emergency Operations Center (SEOC) continues to respond to the global outbreak of COVID-19.</p> <p>Fully activated since January 22, 2020, the SEOC has been coordinating the acquisition and delivery of personal protective equipment (PPE), the use of non-pharmaceutical interventions (NPIs), intelligence and advanced planning, and logistical support to stakeholders.</p> <p>This situation report includes SEOC and state agency activities related to the continued COVID-19 response (and the Governor’s Safe Start reopening plan) and current wildland fires response.</p> <p>The SEOC is monitoring Mission #20-2375 Civil Unrest Response.</p>		
Today’s Highlights		
<ul style="list-style-type: none">On 9/14/20 Governor Inslee extended two proclamations related to truck driver hours. COVID-19 Truck Driver Hours (20-22.6) extends the COVID-related commercial truck driver hour waiver, to align with the federal waiver extension to December 31. Wildfires Truck Driver Hours – Fire Retardant Powder and Utility Restoration (20-73.1) adds an hours of service waiver for commercial truck drivers who are providing transportation services necessary to restore electrical, telecommunication and utility services interrupted by the wildfires. The expiration date of September 30 remains the same, unless extended by subsequent proclamation.		
Current Risks (Intelligence Section and Advanced Planning Team)		
<ul style="list-style-type: none">Confusion about masks protecting against wildfire smoke – public believing they need N95 for COVID and smoke protection.Effects of the election and political beliefs are impacting compliance of mask wearing by the public with an increase of social shaming as election season nears.Fire evacuations are causing an increase in the number of people congregating and the impacts of the sudden surge in fires will be felt across the case counts in coming weeks.Misinformation about the positive impacts of mask wearing, and misinformation about negative health effects of mask wearing could be exacerbated further with the scientific debate on infectious transmission of COVID 19.A possible seasonal influenza epidemic in the fall will lead to additional challenges including disruption of the health and social care systems and a large resurgence of Influenza-like Illness (ILI) and Covid-like		

STATE EMERGENCY OPERATIONS CENTER

Illness (CLI) with local or regional epidemics. A generalized increase in respiratory infections over the winter could also rapidly overwhelm test and trace capacity.

- Following the suspension of routine clinical care and general fear from the public around healthcare systems during the pandemic, there will likely be an increase in the number of poorly-managed chronic conditions or undiagnosed diseases combined with a surge in post-COVID-19 morbidity resulting in overall and long term health consequences.
- There are other “capacities” that should continue to be increased in the response, in addition to healthcare capacity. Without increasing these, the interconnected response/recovery network and the community cannot move into the “New Normal”. These capacities include: Healthcare System, Statewide Broadband, Affordable Housing, Business Solvency, Online Education, Distributed Work, Food Security, and Social Services.

Incident Snapshots

Wildfire Snapshot

Information as of **9/15/20 at 09:00**

Fire Name (Start Date)	# Acres (+/-)	H&S in Threat	Evac Level/# Evac'd	FMAG (F)	Fire Behavior/Fuels
Location (County)	% Contained	Lost H/S	Shelters/#Sheltered	State Mobe (S)	Notes
APPLE ACRES (9/7/20)	5,753 (0)	None	None	9/7/20 (F)	Minimal / Grass, brush, timber
3 mi NE of Chelan (Chelan)	97% (0%)	None	None	9/7-12/20 (S)	Road, area closures
BABB ROAD (9/7/20)	15,266 (0)	40	3 / 250	9/7/20 (F)	Minimal / Grass, brush
5 mi NW of Rosalia (Whitman)	90% (0%)	121 / 102	None	9/7-14/20 (S)	Last report unless activity occurs
BIG HOLLOW (9/8/20)	20,805 (0)	42	1, 2, 3 / Unknown	---	Moderate / Timber, slash
9 mi N of Stabler (Skamania)	10% (0%)	Unknown	Unknown	Req 9/9/20	Road, area, trail closures
COLD CREEK (9/14/20)	60	Unknown	None	---	Active / Timber
29 MI w OF Naches (Yakima)	0%	Unknown	None	---	Road closures
COLD SPRINGS (9/6/20)	188,852 (0)	185	2, 3 / 300	9/7/20 (F)	Moderate / Grass, brush
3 mi S of Omak (Okanogan)	60% (+10%)	34 / 11	1 / 50	9/7-13/20 (S)	Road, area, trail closures
CUSTOMS ROAD (9/7/20)	2,208 (0)	180	3 / Unknown	---	Minimal / Grass, brush, timber
1 mi W of Curlew (Ferry)	60% (20%)	2 / 9	Unknown	---	
EVANS CANYON (8/31/20)	75,817 (0)	6	Unknown	9/1/20 (F)	Minimal / Grass, brush
8 mi NW of Naches (Yakima/Kittitas)	95% (+5%)	6 / 6	Unknown	9/1/20 (S)	
INCHELIUM COMPLEX (9/7/20)	18,940 (+212)	486	2 / Unknown	---	Moderate / Brush, timber
1 mi N of Inchelium (Ferry)	53% (+5%)	3 / 10	Unknown	---	
MANNING ROAD (9/7/20)	2,685 (0)	20	3 / Unknown	---	Minimal / Grass, brush, timber
5 mi NE Colfax (Whitman)	90% (0%)	3 / 1	Unknown	---	Last report unless activity occurs
PEARL HILL (9/6/20)	223,730 (0)	1,085	1, 2 / 0	9/7/20 (F)	Minimal / Grass, brush
9 mi E of Bridgeport (Douglas)	90% (+3%)	17 / 38	Yes / Unknown	9/7/20 (S)	Road, area closures
WHITNEY (9/7/20)	125,123 (+1,230)	350	2, 3 / 0	---	Minimal/Grass,brush,timber,crops
6 mi NW of Davenport (Lincoln)	65% (0%)	10 / 40	Yes / 0	9/7/20 (S)	Road closures
FISH (9/8/20)	141 (0)	None	None	---	Minimal / Timber
E of Enumclaw near Hwy 410 (King)	30% (0%)	None	None	---	Area closures, debris on Hwy 410
SUMNER GRADE (9/7/20)	494 (0)	10	1, 2 / 200	9/9/20 (F)	Minimal / Brush, timber
In Bonney Lake (Pierce)	85% (+20%)	2 / 6	2 / 0	9/7/20 (S)	Area restrictions

Dropped from report: Wawawai Canyon Fire in Whitman County.

Information Sources: NW Interagency Coordination Center Morning Brief, DNR Morning Brief, WSP State Fire Marshal Daily Update

H&S = Homes and Structures

Evacuation Levels | 1 = Ready (be aware) | 2 = Set (start packing) | 3 = Go! (get out now!)

FMAG = Federal Management Assistance Grant (federal assistance)

State Mobe = WA State Fire Mobilization (WSP Fire Marshal's Office)

STATE EMERGENCY OPERATIONS CENTER

DOH COVID-19 Data Dashboard

Source: <https://www.doh.wa.gov/Emergencies/NovelCoronavirusOutbreak2020COVID19/DataDashboard>

Data as of 9/13/20 11:59 PM

County & Safe Start Status	ECC/EOC	New Cases							Cumulative Totals			
		10-Sep	11-Sep	12-Sep	13-Sep	14-Sep	15-Sep	16-Sep	Week	Cases	Tests	Deaths
Adams	P	2	4	11	17	---	---	---	34	763	3,737	9
Asotin	M	1	1	1	0	---	---	---	3	63	2,333	2
Benton	F	13	19	13	9	---	---	---	54	4,338	30,394	126
Chelan	P	3	3	18	13	---	---	---	37	1,809	16,545	13
Clallam	F	2	0	0	1	---	---	---	3	216	6,198	1
Clark	F	34	17	10	7	---	---	---	68	2,437	57,438	60
Columbia	P	0	0	0	0	---	---	---	0	14	493	1
Cowlitz	P	1	4	0	2	---	---	---	7	577	16,251	6
Douglas	P	0	0	1	2	---	---	---	3	1,170	7,789	9
Ferry	P	0	0	0	0	---	---	---	0	29	751	0
Franklin	F	11	17	11	18	---	---	---	57	4,131	18,781	59
Garfield	M	0	1	1	0	---	---	---	2	10	190	0
Grant	P	24	19	27	53	---	---	---	123	2,663	18,432	18
Grays Harbor	F	5	22	6	8	---	---	---	41	363	7,631	6
Island	F	2	2	0	0	---	---	---	4	278	8,916	11
Jefferson	P	0	1	0	0	---	---	---	1	71	2,569	0
King	F	123	134	83	48	---	---	---	388	20,912	529,171	747
Kitsap	F	12	16	4	1	---	---	---	33	1,104	35,063	11
Kittitas	F	22	8	0	0	---	---	---	30	489	4,985	22
Klickitat	P	4	0	0	0	---	---	---	4	187	4,168	3
Lewis	P	10	3	2	4	---	---	---	19	433	10,229	4
Lincoln	M	2	2	0	0	---	---	---	4	38	883	1
Mason	P	2	4	1	0	---	---	---	7	354	9,481	3
Okanogan	P	1	0	0	3	---	---	---	4	1,008	11,029	9
Pacific	P	2	0	1	0	---	---	---	3	77	2,332	3
Pend Oreille	P	0	0	0	0	---	---	---	0	56	1,598	0
Pierce	F	41	34	45	31	---	---	---	151	7,338	126,213	188
San Juan	F	0	0	0	0	---	---	---	0	29	3,638	0
Skagit	P	6	1	2	1	---	---	---	10	1,063	34,497	22
Skamania	M	0	0	0	0	---	---	---	0	60	1,969	1
Snohomish	P	45	17	28	20	---	---	---	110	6,547	123,314	207
Spokane	P	71	53	41	49	---	---	---	214	5,874	78,124	147
Stevens	F	0	2	1	0	---	---	---	3	133	4,192	2
Thurston	P	9	7	2	1	---	---	---	19	996	39,001	15
Wahkiakum	P	0	0	0	0	---	---	---	0	6	514	0
Walla Walla	P	7	5	3	0	---	---	---	15	824	15,196	5
Whatcom	P	12	16	7	4	---	---	---	39	1,204	54,971	40
Whitman	M	73	46	7	0	---	---	---	126	1,015	3,625	0
Yakima	F	14	13	19	11	---	---	---	57	11,171	63,613	251
Unassigned		3	1	4	12	---	---	---	20	288	297,713	4
Totals		557	472	349	315	0	0	0	1,693	80,138	1,653,967	2,006

County ECC/EOC Activation Levels: M=Monitoring

P=Partial F=Full

Safe Start Phases:

Phase 1 Mod 1 Phase 2 Phase 3 Phase 4

Currently Hospitalized: 247

Currently Ventilated: 26

Note: Data may change from previous days as cases are confirmed, assigned, or removed with further investigation.

STATE EMERGENCY OPERATIONS CENTER

SEOC Objectives

Strategic Objectives in Priority Order

- 24. Support wildfire response and recovery.
 - 1. Ensure the safety of our healthcare and other critical infrastructure workforce.
- 25. Develop strategies for long- term recovery in jurisdictions impacted by wildfire.
- 2b. Continue to implement and maintain a public health and healthcare system response that slows the infection rate of COVID-19 and prevents the healthcare system from becoming overwhelmed with special considerations for the most vulnerable populations (over 65, living in congregate settings, underlying chronic health conditions, pregnant, experiencing homelessness, etc.).
- 23a. Maintain situational awareness and capability to respond to multiple incidents.
- 11a. Support the implementation of the Safe Start phased approach to re-opening Washington State.
- 13. Address Human Service needs, including: childcare, sheltering, mental health, and hunger relief with an emphasis on protecting vulnerable populations.
- 3a. Maintain the community lifeline support (e.g., food, health, communications, etc.).
- 4. Ensure the development, maintenance, and use of data collection and analysis systems across the response that inform decision making processes and allow for evaluation of intervention efforts.
- 5. Plan for economic, physical and behavioral health, social and healthcare system recovery.

Operational Objectives

(Operational objectives should be completed within the operational period of SEOC IAP #37)

- 22b. Support communities impacted by wildfires, including addressing gaps in mass care, communication capability, and long-term recovery planning. (SO #1, 3a, 5, 13, 23a, 25 and 24)
- 26. Prepare to provide support for evacuations from fires in Oregon.
- 6b. Provide personnel, planning capability, equipment and supplies in support of contract tracking, testing, isolation and quarantine efforts; and address medical support needs. (SO #2b)
- 15e. Continue working towards long-term food bank staffing options alongside interagency partners. (SO #5 and 13)
- 14c. Monitor cloth mask distribution statewide to include at-risk communities, children and various economic sectors. (SO #2b, 11a,13 and 5)
- 21. Develop and maintain state operation staging areas to meet the PPE needs of the incident. (SO #2b)
- 8a. Mitigate impacts to food supply, supply chain, and health and safety of agricultural and food processing workers. (SO #3, 4, 13, and 24)
- 10e. Continue developing processes to collect, analyze, and visualize key data elements to support decision making and situational awareness. (SO #4)

STATE EMERGENCY OPERATIONS CENTER

State Resources

WA State Agency COVID-19 Cost Estimates (as of 9/14/20)	Cost
State Agencies (expenditures year-to-date)	\$722,594,682
PPE ordered, not yet received	\$221,002,602
Total Estimated Expenditures Reported	\$993,597,284

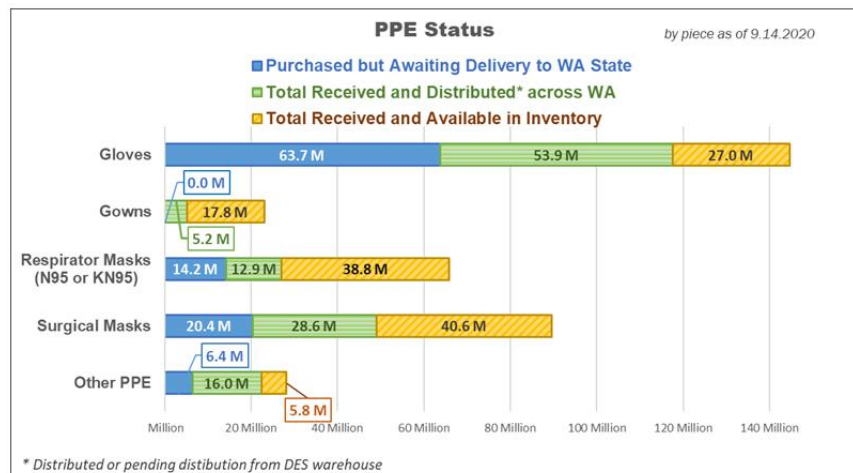
Status of Resource Requests (as of 9/15/20)

The cumulative status of resource requests in Resource Tracker (WebEOC) are as follows:

Incident	Total # of Requests	Unassigned	Assigned	Accepted	In Transit	On Scene	Completed
2020 Wildfires	29 (+5)	0	5	10	1	9	4
COVID-19	5,248 (+13)	0	82	60	0	111	4,536

Please note, there are several requests whose status not currently summarized in the WebEOC dashboard, which is the source for the above roll-up. They are included in the total count, but not the status breakdown.

Personal Protective Equipment (PPE) Status and Distribution (as of 9/14/20)



COVID-19 Information

COVID-19 Risk Assessment Dashboard (as of 9/13/20)

Source: [Washington State Coronavirus Response](#)

Washington State Key Metrics	Value	Change	Goal	Meeting Goal
Rate per 100K of newly diagnosed cases over two weeks	81.3	-2.5	<25	No
Average daily COVID-19 testing rate per 100K over a week	168.2	-5.3	--	--
Percent of positive tests over a week	3.3%	0.0%	<2%	No
Percent of licensed beds occupied by patients	57.1%	-3.5%	<80%	Yes
Percent of licensed beds occupied by COVID-19 patients	2.5%	-0.1%	<10%	Yes
Effective Reproductive Number (R_t) (as of 8/28/20)	Western WA: 0.9 (0.0)		Eastern WA: 1.2 (+0.3)	

STATE EMERGENCY OPERATIONS CENTER

Institute for Health Metrics and Evaluation (IHME) Projections (as of 9/11/20)

Source: <https://covid19.healthdata.org/united-states-of-america/washington>

Hospital Resource Use Projections	9/15/20	9/16/20	9/17/20	9/18/20
All Beds Available 4,907; Needed (approx.)	219.68	220.43	221.23	222.08
ICU Beds Available 341; Needed (approx.)	61.13	61.36	61.59	61.83
Invasive Ventilators Needed (approx.)	54.67	54.88	55.09	55.31
Daily Death Current Projections	9/15/20	9/16/20	9/17/20	9/18/20
Current Projection (approx.)	5.89	5.91	5.94	5.97
Projected Total Deaths by January 1, 2021 (+/- last projection)	Current Projection	Mandates Easing	Universal Masking	
	4,258.37	4,546.08	2,531.61	

RESPONSE/RECOVERY ACTIVITIES

Operations Section

ESF 1 Transportation (Operating remotely)

- Section of SR410 milepost 11.5 to 13 reopened today. One section (milepost 30 to 40) remains closed.
- US 12 is closed in both directions. Eastbound traffic is stopped fourteen miles west of the summit near milepost 138 at the junction of US 12 and SR 123. Westbound traffic is stopped at milepost 183 near Oak Creek, two miles west of the junction of US 12 and SR 410.
- WSDOT crews are assisting Washington State Patrol, Fire, and others with closures, pilot vehicles and traffic control in the hard hit areas.

ESF 2 Communication, Information and Warning Systems

- Deploying three satellite data terminals to City of Malden Red Cross Staging area. Equipment anticipated to be completely set up Wednesday. One Satellite Data Terminal currently supporting Buckley fire camp operations. Working ATT service restoration requests for Douglas County (Dyer Hill). Coordinating Verizon equipment/deployable to the City of Greenwater. Working Communications resource request for Colville tribe. Colville is requesting ATT, Verizon and LMR assistance.
- Continue to support state, tribal, and local partners with COVID-19 related technology communications requests. Work with tribal and local partners to augment communications systems in underserved areas. Recover equipment on loan to various partners. Phase one install of microwave transport to the Hoh reservation has been completed. Phase two is currently underway to run permanent fiber to the tribal administration area. Temporary satellite service has been put in place while phase two is underway. Participated in calls with Lummi and Hoh to check in on progress.

ESF 4 Firefighting (Operating remotely)

- See Wildfire Snapshot on page 2.

ESF 6 Mass Care, Emergency Assistance, Temporary Housing and Human Services

- Hosted daily ESF 6 coordination call for wildfire update.
- Red Cross shelter update:
 - Four (4) non-congregate shelters (Chelan, Spokane, King (2)) - total population: 227.

STATE EMERGENCY OPERATIONS CENTER

- Closely monitoring the trigger point of evacuation levels in Oregon with anticipating evacuees to enter Washington; no update, no mass evacuation expected.
- Continuing support with the SEOC tribal liaison, ESF 11, and Colville Tribes to fill resource request for livestock support.
- Three pending resource requests for generators, air purifiers, and a mobile laundry facility.
- Began discussion about emergency medication refills for displaced persons from wildfires.

ESF 8 Public Health, Medical and Mortuary Services (Operating remotely)

- Continuing to monitor Resource Tracker closely and ensure missions are being completed.
- Continue to work with Chelan/Douglas Health District to restore sustainable operations.
- Monitoring wildfires statewide and standing by for resource requests.
- DOH has established a separate Incident Command for wildfires.
- Med Surge/Isolation & Quarantine remains in Chelan/Douglas inspecting their isolation and quarantine capabilities.

ESF 11 Agriculture and Natural Resources (Operating remotely)

- WSDA continues to assist EMD in gathering agricultural disaster declaration and food assistance data in developing a possible individual assistance declaration.
- WSDA continues to report out on hunger relief and agricultural/livestock impacts during the Unified Command Group briefings. Rapid Response & Emergency Management Program is able to support the Director's Office on attending briefings, as needed.
- WSDA Animal Services Division and Rapid Response & Emergency Management hosted a meeting with ASPCA, SEOC ESF-6 (mass care) and the Colville Tribe to gather more detailed information pertaining to a resource request the Tribe placed through SEOC for livestock support supplies, fencing, feed, veterinary services, and carcass removal expertise.
- WSDA is coordinating with the WA State Veterinary Medicine Association (WSVMA) on the shared awareness of veterinary assistance and financial assistance need for Tribal organizations.
- WSDA continues to share capabilities that can be utilized by industry stakeholders if needed, including brand inspection work for indemnity activities and composting expertise for carcass management in conjunction with the local health jurisdiction and Dept. of Ecology.

ESF 13 Public Safety Security (Operating remotely)

- ESF13 continues to coordinate with local and state law enforcement officials to support ongoing wildfire response and recovery efforts throughout the state.

ESF 14 Long-Term Community Recovery

- Finishing Individual Assistance and Public Assistance Category B disaster declarations for Whitman County following the September wind and fire event.
- Participated in Joint Field Office (JFO) call with FEMA.
- Collecting disaster impact information such as injuries, deaths, homes & buildings damaged/destroyed, fed/state resources expended, etc.
 - Please send this type of information to recovery@mil.wa.gov.
 - Any immediate threats to infrastructure and property are being collected by Public Assistance to support potential FMAG requests.
- Continue supporting local and state recovery planning efforts.

ESF 15 External Affairs – Joint Information Center

- ESF 15 continues to monitor media and social media; we are sharing key messages from partners and local jurisdictions.

STATE EMERGENCY OPERATIONS CENTER

- Contacts for the JIC are 253-512-7491 and JICdirector@mil.wa.gov. Media inquiries can be routed to DOH-PIO@doh.wa.gov.

ESF 20 Defense Support to Civil Authorities

- Continue to support SEOC with public health and wildfire missions.

Tribes and Nations Status

Tribe/Nation	Proc/Dec Issued	EOC/ECC Status	Tribe/Nation	Proc/Dec Issued	EOC/ECC Status
Conf. Tribes of Chehalis Res.	3/13/20	Monitor	Quinault Indian Nation	3/18/20	Monitor
Conf. Tribes of Colville Res.	3/16/20	Full	Samish Indian Nation	3/12/20	Monitor
Cowlitz Indian Tribe	3/16/20	Monitor	Sauk-Suiattle Indian Tribe	3/20/20	Monitor
Hoh Indian Tribe	3/5/20	Monitor	Shoalwater Bay Indian Tribe	3/18/20	Monitor
Kalispel Tribe of Indians	3/18/20	Partial	Skokomish Indian Tribe	3/13/20	Monitor
Lower Elwha Klallam Tribe	3/13/20	Monitor	Snoqualmie Tribe	3/1/20	Monitor
Lummi Nation	3/3/20	Monitor	Spokane Tribe of Indians	3/16/20	Monitor
Makah Tribe	3/13/20	Partial	Squaxin Island Tribe	3/20/20	Full
Muckleshoot Indian Tribe	3/18/20	Monitor	Stillaguamish Tribe of Indians	3/5/20	Partial
Nisqually Tribe	3/17/20	Monitor	Suquamish Tribe	3/9/20	Full
Port Gamble S'Klallam Tribe	3/9/20	Monitor	Swinhomish Tribe	3/9/20	Partial
Puyallup Tribes	3/18/20	Partial	Tulalip Tribes	3/10/20	Monitor

State Agency COVID-19 Webpages

Agriculture (WSDA) Link Attorney General (ATG) Link Children, Youth & Families (DCYF) Link Commerce (COM) Link Conservation Commission (SCC) Link Corrections (DOC) Link Ecology (ECY) Link Employment Security (ESD) Link Financial Institutions (DFI) Link Financial Management (OFM) Link Fish and Wildlife (WDFW) Link Gambling Commission (WSCG) Link Governor Inslee Link Health (DOH) Link Health Care Authority (HCA) Link Insurance Commissioner (OIC) Link	Labor and Industry (LNI) Link Licensing (DOL) Link Liquor & Cannabis Board (LCB) Link Natural Resources (DNR) Link Parks & Recreation (PARKS) Link Revenue (DOR) Link Social & Health Services (DSHS) Link Superintendent of Public Instruction Link State Patrol (WSP) Link Transportation (WSDOT) Link Treasurer (OST) Link University of Washington (UW) Link Utility & Transportation (UTC) Link Veterans Affairs (DVA) Link Washington State University (WSU) Link WA State Coronavirus Response Link
---	---

Government Actions Undertaken (Note: Older information condensed for brevity)

FEMA Presidential and Federal

- [Presidential Proclamation Declaring a National Emergency](#) – 3/13/20
- [FEMA Major Disaster Declaration for Washington State](#) – 3/22/20
- [COVID-19 Public Health Emergency](#) (HHS) – extended on 7/25/20

STATE EMERGENCY OPERATIONS CENTER

- [REAL ID Act](#) deadline extended to 10/1/2021
- [Operation Warp Speed](#) (HHS National Vaccine Strategy)
- [Halt in evictions to prevent further spread of COVID-19](#) – 9/04/20

State of Washington Actions Undertaken

Travel and Border Status

- [Washington State Ferries](#) – Several routes are operating on reduced schedules dependent on Washington State Ferries' COVID Response Service Plan. [Link to details](#)
- [Amtrak Cascades](#) – Service continues between Seattle and Eugene; still no service north of Seattle.
- [Seattle-Tacoma International Airport](#) – Regular updates for the traveling public.
- US—Canada Border – Border closure extended to 9/21/20 for nonessential travel ([Forbes](#)). Requirements for travel: [Canadians and permanent residents](#) | [Non-Canadians](#)
- Port of Bellingham is offering short-term [emergency transportation](#) service from Point Roberts.

Governor's Office

- [Statewide emergency proclamation](#) Wildfire - 8/19/20 - until September 30 at 11:59 PM
- [Wildfires - Temporary Assistance to Families](#) – 9/10/20
- [Food Production Workers Paid Leave Proclamation](#) – 8/14/20
- [Washington State Governor's State of Emergency Proclamation](#) – 2/29/20

To view all new, amended or extended proclamations relating to COVID-19, visit [Governor's Proclamations](#)

"Safe Start" Expansion Proclamation 20-25.4 – 5/31/20

- 9/4/20 – Updated guidance for [Real Estate](#) and [Modified Phase 1 Guidance Summary](#)
- 9/9/20 – FAQ for Water Recreation Facilities [Link to details](#)
- Previous business safe start guidance can be located [here](#).

County Safe Start Phase Approval Dates

County	Mod 1	Ph 2	Ph 3	Ph 4	County	Mod 1	Ph 2	Ph 3	Ph 4
Adams	-----	5/22			Lewis	-----	5/22	6/19	
Asotin	-----	5/18	6/10		Lincoln	-----	5/08	6/05	
Benton	7/04				Mason	-----	5/23	6/19	
Chelan	6/10				Okanogan	-----	6/05		
Clallam	-----	5/28			Pacific	-----	5/23	6/16	
Clark	-----	6/6			Pend Oreille	-----	5/08	6/05	
Columbia	-----	5/08	6/5		Pierce	-----	6/05		
Cowlitz	-----	5/23			San Juan	-----	5/23		
Douglas	6/10				Skagit	-----	6/05		
Ferry	-----	5/8	6/5		Skamania	-----	5/11	6/11	
Franklin	7/04				Snohomish	-----	6/05		
Garfield	-----	5/08	6/6		Spokane	-----	5/22		
Grant	-----	5/23			Stevens	-----	5/11	6/5	
Grays Harbor	-----	5/22	6/17		Thurston	-----	5/27	6/24	
Island	-----	5/23	6/19		Wahkiakum	-----	5/11	6/05	
Jefferson	-----	5/23			Walla Walla	-----	5/27		
King	-----	6/19			Whatcom	-----	6/05		
Kitsap	-----	5/28			Whitman	-----	5/15	6/06	
Kittitas	-----	5/27	6/23		Yakima	7/4			
Klickitat	-----	6/01							

STATE EMERGENCY OPERATIONS CENTER

School Reopening Information

- DOH's [K-12 Schools – Fall 2020-2021 Guidance](#), [Decision Framework](#) and [District Early Learning Planning Guide](#)
- OSPI's [Reopening Washington Schools 2020 District Planning Guide](#) and [School Nutrition Programs](#)
- Higher Education Institutions' [Campus Reopening Guide](#)
- Washington Education Association [Public School District Reopening Plans Fall 2020](#)

Weather Information

National Weather Service (NWS) Alerts for 9/14/20 as of 14:03 PDT

Dense Smoke and Fog Advisories – Effective 9/15/20 to 9/16/20 – Greater Vancouver Area; Lower Columbia and I-5 Corridor in Cowlitz County; South Washington Cascade Foothills; Central Columbia River Gorge; and Western Columbia River Gorge.

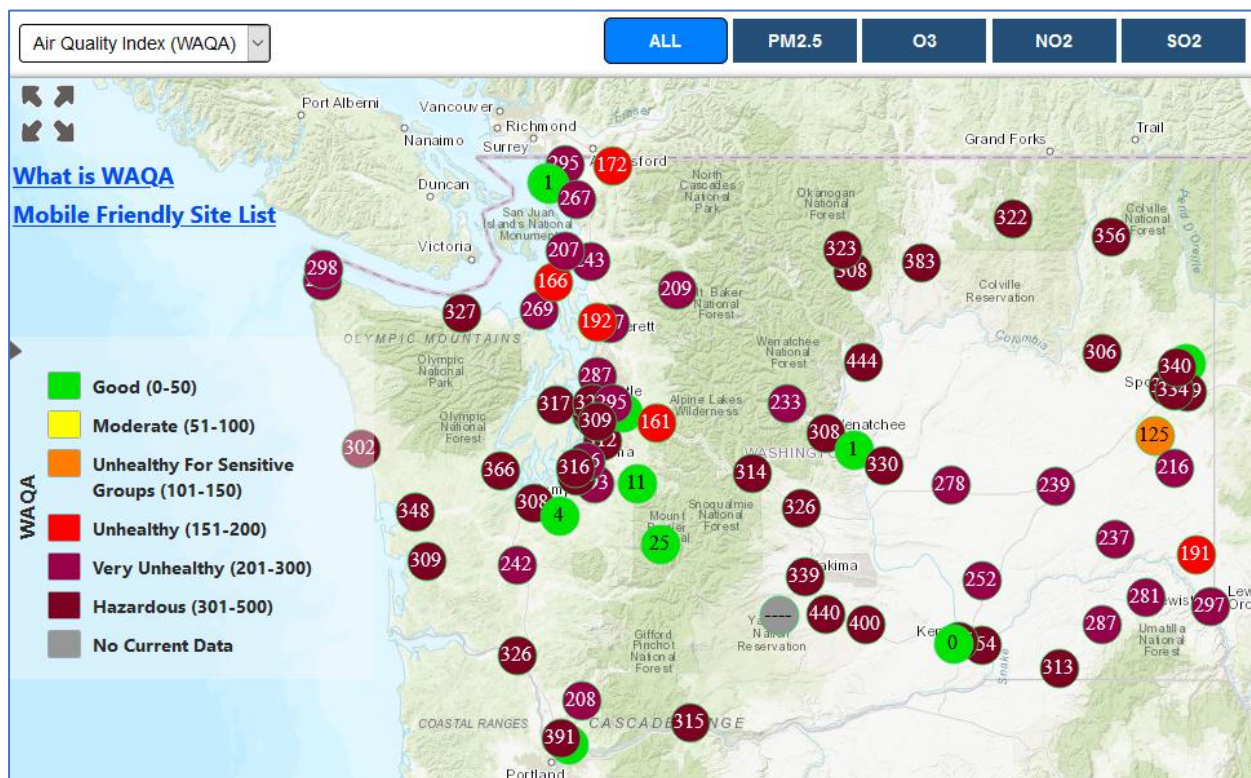
Air Quality Alert – Effective 9/14/20 to 9/18/20 – Benton; Columbia; Franklin; Kittitas; Klickitat, Walla Walla; and Yakima.

Air Quality Alert – Effective 9/14/20 to 9/17/20 – Adams; Asotin; Chelan; Clallam; Clark; Cowlitz; Douglas; Ferry; Garfield; Grant; Grays Harbor; Island; Jefferson; King; Kitsap; Lewis; Lincoln; Mason; Okanogan; Pacific; Pend Oreille; Pierce; San Juan; Skagit; Snohomish; Skamania; Spokane; Stevens; Thurston; Wahkiakum; Whatcom; and Whitman.

For additional details – NW Alerts for State of WA website: <https://alerts.weather.gov/cap/wa.php?x=1>

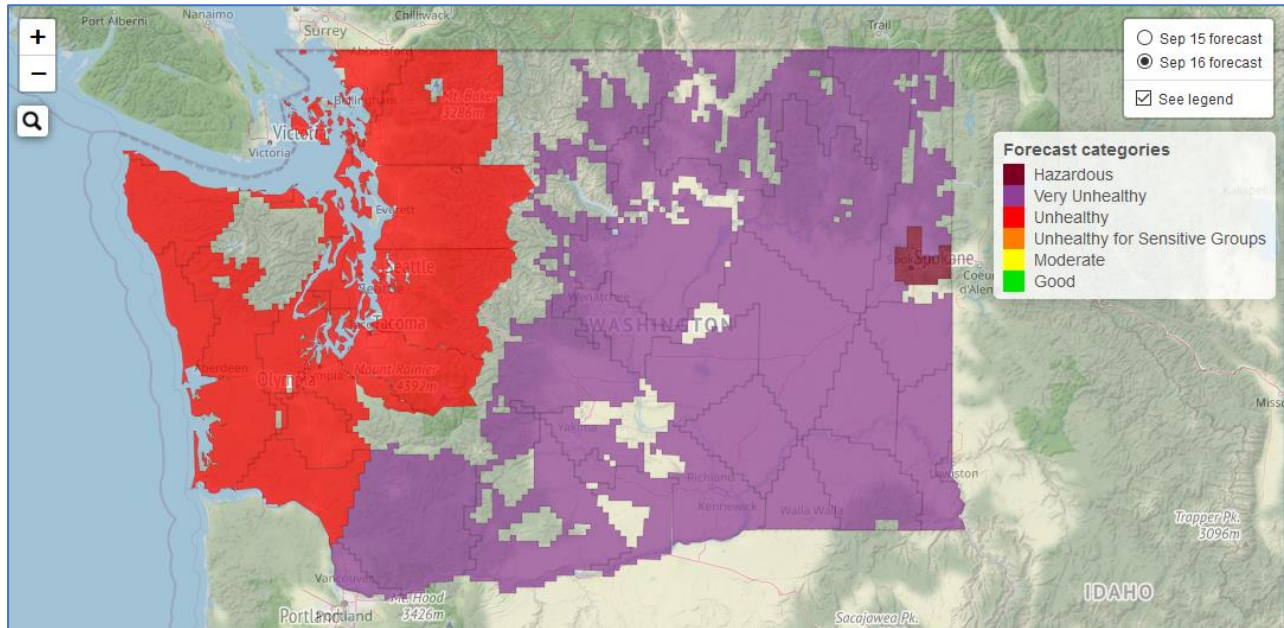
Dept. of Ecology Air Monitoring Network – Air Quality Program (as of 9/15/20 12:43)

<https://enviwa.ecology.wa.gov/home/map>



STATE EMERGENCY OPERATIONS CENTER

Smoke Forecast for 9/16/20



NWCC Briefing for 9/15/20 as of 07:35 PDT

Northwest Fire Weather Summary

The west side of the region could see some light residual showers today from last night's weak front. Relative humidity and overnight recoveries will continue to improve through the week. An upper level low will circulate offshore today and tomorrow continuing breezy southwesterly flow and could send impulses into the region triggering an occasional shower. As the low moves over the region Thursday and Friday, it will bring more widespread showers, possibly with some embedded thunderstorms, though smoke should inhibit storm development.

Northwest Fire Potential Summary

Potential for new significant fires remains elevated particularly for south central Oregon due to anticipated breezy southwesterly winds and dry conditions this afternoon. As the upper level trough passes through Thursday into Friday, significant fire potential will get another boost due to gusty winds and lightning potential. Significant fire potential will relax in the zonal flow behind the trough.

Source – NW Interagency Coordination Center (NWCC): <https://gacc.nifc.gov/nwcc/predict/intelligence.aspx>

SitRep Writer: Lisa Johnson

SEOC Supervisor: Rob Sabarese