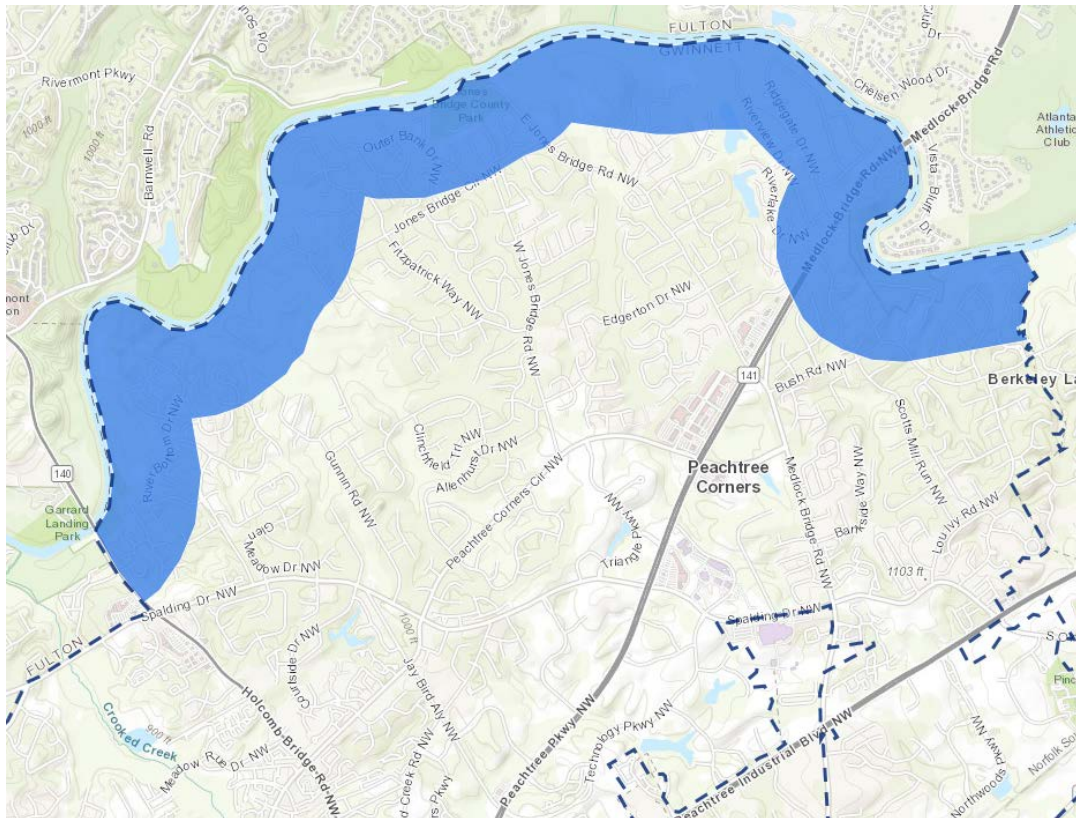


## Chattahoochee River Corridor

The Chattahoochee River is the largest river in metro Atlanta and one of the region's most valuable resources, serving as the primary source of drinking water for millions of Georgia residents. The Metropolitan River Protection Act (MRPA) was adopted by the Georgia General Assembly in 1973 to protect this valuable resource and thereby created a 2,000-foot wide buffer along the Chattahoochee River known as the Chattahoochee River Corridor.



All land disturbing activity such as, but not limited to, clearing, removal of trees and shrubs, dredging, grading, excavating, filling or addition of impervious surfaces (pools, decks, retaining walls, fence, pavers/pathways, etc.), have restrictions and require the City's approval and a permit prior to construction.

## Tree Removal

Homeowners are required to obtain a tree removal permit in order to remove a tree that is located on a property in the Chattahoochee River Corridor, Conservation Area, Zoning Buffer/Stream Buffer, or if the tree is a specimen tree. For more details on Tree Removal Permits and the application process, please visit our tree removal page: <https://www.peachtreecornersga.gov/residents/resident-guide/tree-removal-information>.

Additional information on the River Corridor can be found on the City's webpage: <https://www.peachtreecornersga.gov/government/public-works/land-development/river-corridor>.