



**BuildingPoint**  
Ohio Valley

**The Experts in Design-Build-Operate Solutions**  
**WWW.BUILDINGPOINTOHIOVALLEY.COM**

**You're Invited To Our Fall 2021**

# Training & Tech Days!



**Cost: \$395.00 (\$349.00 for x2 or More!)**

Payment via Cash, Check or Credit Card  
Online, In-Person or Over the Phone.

**LUNCH PROVIDED!**

## Training Agenda (Half-Day: 8am-12pm)

- ▶ Introduction & Overview
- ▶ Construction Point Layout (2D & 3D Views)
  - Robotic Total Station & Field Tablet
  - Trimble Field Link Software
  - Augmented Reality (XR10)
- ▶ Follow-Up Inspections Workflow
  - 3D Laser Scanner (X7)
- ▶ Elevations & Floor Flatness
  - 3D Laser Scanner (X7)
- ▶ Lunch (PROVIDED!)

This will be a hands-on class, focusing on both 2D & 3D models & workflows using a variety of construction positioning solutions.

**Pittsburgh, PA #1: (10/26/21)**

**Pittsburgh, PA #2: (11/2/21)**

**Monroe, OH: (11/9/21)**

**Akron, OH: (10/28/21)**

**Columbus, OH: (11/4/21)**

**REGISTER TODAY!!!**

**Register Online!**

[www.buildingpointohiovalley.com/trainingandtech2021](http://www.buildingpointohiovalley.com/trainingandtech2021)

**For More Information or To Register, Please Contact**

**BuildingPoint Ohio Valley**

**724-266-1600 x138 | [smz@bpohiovalley.com](mailto:smz@bpohiovalley.com)**



*Authorized Distribution Partner*



# BuildingPoint

Ohio Valley

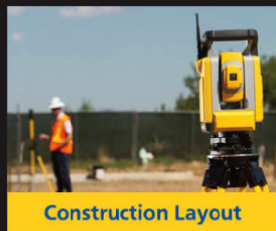
The Experts in Design-Build-Operate Solutions  
[WWW.BUILDINGPOINTOHIOVALLEY.COM](http://WWW.BUILDINGPOINTOHIOVALLEY.COM)

## GENERAL CONTRACTOR

Keeping architects, engineers, subcontractors, and construction business owners on the same page is VITAL.

Trust Building Point Ohio Valley

[WWW.BUILDINGPOINTOHIOVALLEY.COM](http://WWW.BUILDINGPOINTOHIOVALLEY.COM)



Construction Layout



BIM/VDC



3D Scanning



Service Repair



Rentals



Training & Support



Precision Laser & Instrument, Inc.  
is Now Your Local BuildingPoint

We are dedicated to continually improving productivity for the construction industry through advanced and intuitive technologies.

Our portfolio of solutions streamlines communication and collaboration, helping realize greater efficiency and profitability.

### Pittsburgh Office

1120 Ohioview Avenue | Ambridge, PA 15003 | Ph: 724-266-1600 | Fax: 724-266-8161

### Columbus Office

372 Morrison Road, Ste. D | Columbus, OH 43213 | Ph: 614-759-1000 | Fax: 614-759-7059

### Satellite Locations

**Cleveland/Akron, OH**  
2567 S. Arlington Rd. #5  
Akron, OH 44319  
Ph: 330-633-4900  
Fax: 330-633-4999

**Cincinnati, OH**  
820-B Lebanon Street  
Monroe, OH 45050  
Ph: 513-539-0022  
Fax: 513-539-0033

**Toledo, OH**  
3637 Briarfield Blvd.  
Maumee, OH 43537  
Ph: 419-243-7271  
Fax: 419-243-6418

**Charleston, WV**  
504 Old Goff Mtn. Rd.  
Cross Lanes, WV 25313  
Ph: 304-776-1831  
Fax: 304-776-6790

**Bridgeport, WV**  
98 Thompson Rd.  
Bridgeport, WV 26330  
Ph: 304-933-3036  
Fax: 304-933-3584