

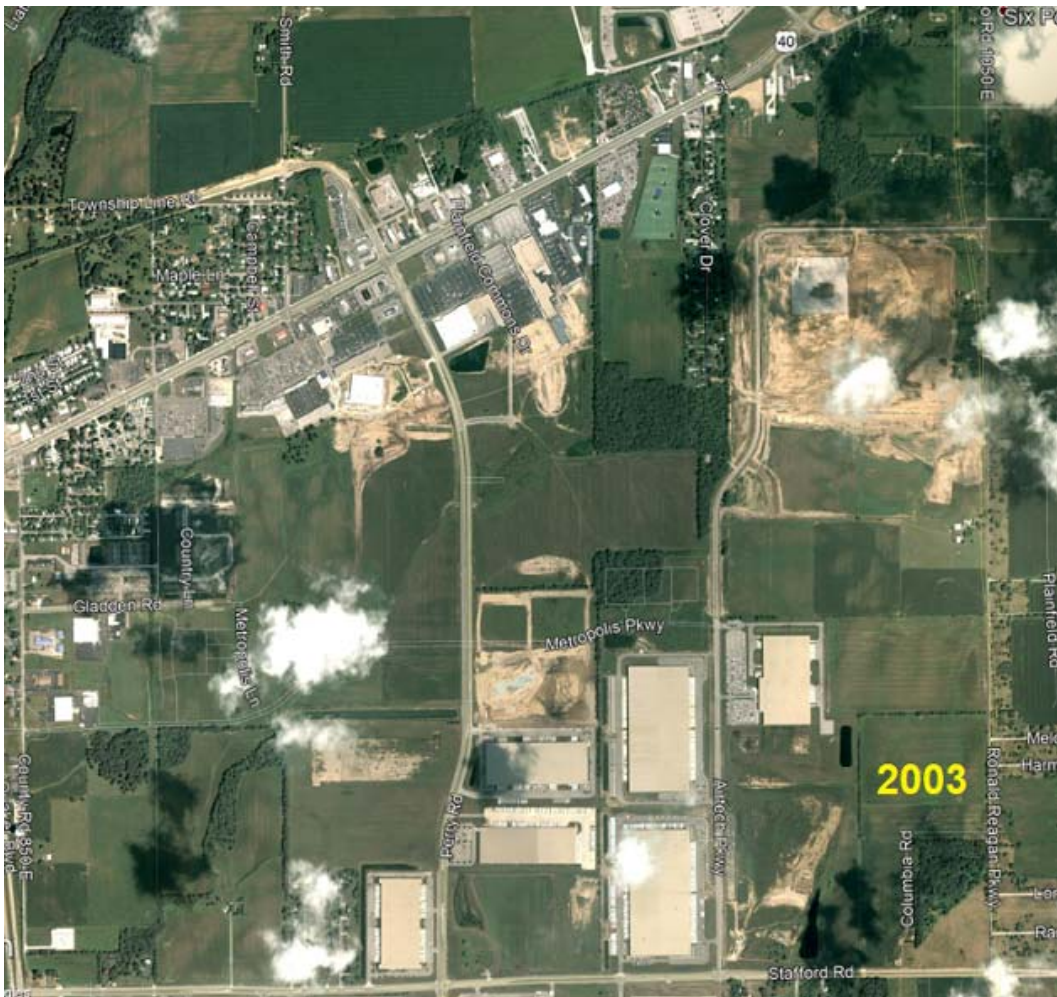
25 Years of Changes!

Keeping with the theme of Banning Engineering’s celebration of 25 years, I thought it would be interesting to look at east Plainfield and see how it has developed over a 25-year time frame. Though my tenure with Banning is 6 months short of the 25-year mark, I can say that I have seen pretty much all of it. Let’s take the area bound by US 40 (Main Street), SR 267 (now Quaker Blvd), CR 450 South (Stafford Road) and CR 1050 East (aka Six Points Road and eventually Ronald Reagan Parkway). Pictured is an image from March **1992**; not much going on. Who remembers the original Walmart location? A Town must have one of those and it was pretty much the first development in the area.



Fast forward to March of **1998**, a few more retail developments have popped up along Main Street and a residential development Gladden Farms. Also note a short stretch of Perry Road and the improvement of its intersection with Stafford Road. Wait! Is that a big box warehouse I see? Something tells me there are going to be many more of those to appear.

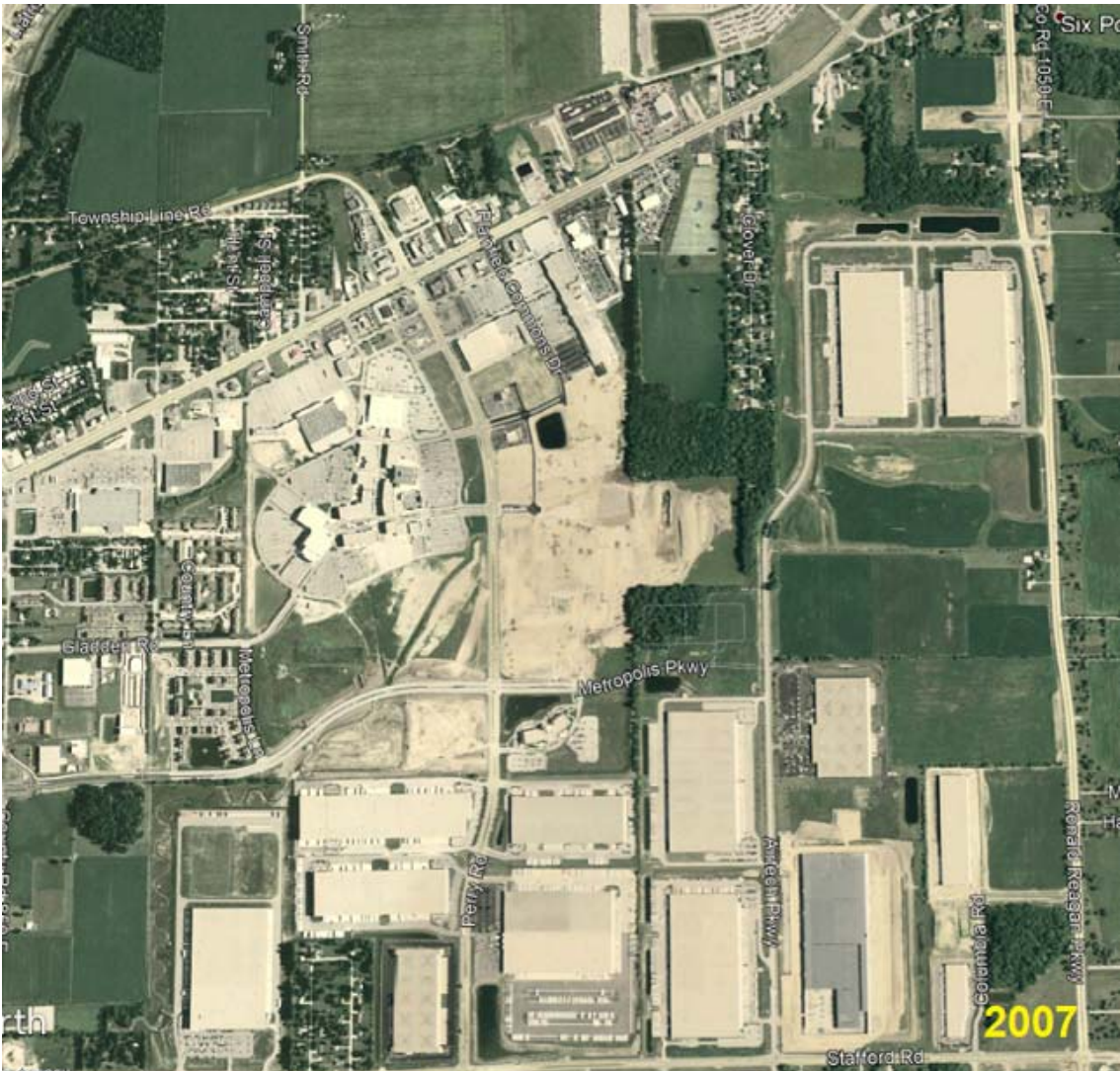
Let’s take a big jump to August of **2003**. The Main Street corridor is really starting to fill up with retail and notice the mall (formerly Metropolis now The Shoppes at Perry Crossing) is under construction. Remember those big boxes I was talking about? You can see a big portion under construction and the beginning of Airtech Industrial Park. Stafford Road is fully improved, and Perry Road has been extended to Main Street.





A lot happening in September of **2005**. The mall has come together nicely. Remember Galyans? Their headquarters appeared along Perry Road. Airtech is taking off, what is going on with the big boxes? And where in the world is Ronald Reagan Parkway?

Halleluiah! It's now August of 2007 and the first leg of Ronald Reagan Parkway has arrived! The long dream of Hendricks County and Town planners has come to fruition, the north/south corridor has finally started. Also, in **2007**, Plainfield Commons continues to grow. A portion of Metropolis Parkway (now Stout Heritage Parkway) has been constructed. And, you guessed it, big boxes.



Whoa! Who put on the brakes? Let's all just fast forward to August **2012** and not bring up the years in between. Things are starting to pick up, notice some apartments are underway at Metropolis and Airtech and southwest of the mall. There also appears to be a project on the east side of Ronald Reagan Parkway! Now we are talking!

October of **2016**, things are taking shape along the Ronald Reagan Parkway corridor with industrial developments, Metropolis Parkway is now connected to Ronald Reagan Parkway.



Well, let's cut to the chase, here we are now. Though Google maps doesn't have a 2019 image, we will have to settle with October of **2018**. I hope you have found my trip down Plainfield memory lane over the last 25 years interesting and eye opening to see how it has arrived to where it is today. I will tell you I personally have worked on several of these developments over the years here at Banning and if I had to put a number of how many projects, we as a company collectively worked on in this area, I would say most likely close to 50. Let's see what happens in the next 25 years!